

Group B. 1, College of the Pacific; 2, St. Olaf; 3, Heidelberg; 4, Eureka; 5, Bethany; 6, Linfield.

Group C. 1, Monmouth; 2, Johnson City; 3, St. Vincent; 4, Fort Hays; 5, Colorado State; 6, St. Thomas; 7, Akron.

Group D. 1, Concordia; 2, Dakota Wesleyan; 3, ISNU; 4, Puget Sound; 5, Bowling Green; 6, College of Idaho; 7, River Falls.

Group E. 1, Yankton; 2, Iowa Wesleyan; 3, Wheaton; 4, Jamestown; 5, Kent; 6, Park; 7, Georgetown.

Group F. 1, South Dakota State; 2, Nebraska Wesleyan; 3, North Central; 4, Centre; 5, Central, Iowa; 6, Missouri Valley; 7, East Texas.

Group G. 1, Hastings; 2, North Texas; 3, Sioux Falls; 4, Louisiana College; 5, Macomb; 6, Transylvania.

Group H. 1, Baylor; 2, Coe; 3, Augustana, Ill.; 4, Aberdeen; 5, Kansas Wesleyan; 6, S. W. Louisiana; 7, North Carolina State.

Group I. 1, Wake Forest; 2, Pittsburg; 3, Augustana, S. D.; 4, Colby; 5, Ouachita and DeKalb (tied); 7, San Marcos.

### SEMI-FINAL ROUND

Group A. 1, Wayne Stewart, Nebraska Wesleyan; 2, Wyman Wumkes, Augustana, S. D.; 3, Arnold Kramer, Maryville; 4, Lester Kaminsky, Baylor; 5, James Tomb, Eureka; 6, Harris Christiansen, Concordia.

Group B. 1, John Fanucchi, College of the Pacific; 2, William Rockam, Redlands; 3, Russell Van Dyke, Hastings; 4, Jack Robbins, North Texas; 5, Don Schrader, Yankton; 6, John Shinn, Heidelberg.

Group C. 1, Eugene Worrell, Wake Forest; 2, Maynard Iverson, St. Olaf; 3, Forest Hainline, Augustana, Ill.; 4, Edmund Linn, Iowa Wesleyan; 5, Edward Greenough, Sioux Falls; 6, Earl Hunt, Johnson City.

### FINALS

1. Eugene Worrell, Wake Forest, "Liberty that Enslaves."
2. Wayne Stewart, Nebraska Wesleyan, "Confucius Say."
3. John Fanucchi, College of the Pacific, "Blue-prints for Paradise."
4. Forest Hainline, Augustana, Illinois, "Corrupt and Contented."
5. Maynard Iverson, St. Olaf, "Strictly Confidential."
6. William Rockam, Redlands, "There Were No Stars."

Those who reached the semi-finals but not the finals received a rating of "Excellent"; those who reached the Finals a rating of "Superior".

# Men's Oratory

## JUDGES' RANKINGS

Rank	College	Preliminaries										Total	Average
1.	Wake Forest .....	1	2	2	3	1	1	2	1	5		18	6
2.	Nebraska Wesleyan .....	3	2	3	1	1	2	1	1	5		19	6.3
3.	College of Pacific .....	1	1	1	3	3	1	2	2	2		16	5.3
4.	Augustana, Illinois .....	1	2	2	1	2	6	2	3	6		25	8.3
5.	St. Olaf .....	4	2	1	5	5	3	1	1	4		26	8.6
6.	Redlands .....	2	2	5	4	2	1	2	1	4		23	7.6
7.	Augustana, South Dak. ....	1	1	1	1	6	3	1	5	4		23	7.6
8.	Hastings .....	7	1	1	5	2	3	2	1	3		25	8.3
9.	Baylor .....	4	1	1	1	2	2	1	1	1		14	4.6
10.	Yankton .....	1	3	2	2	3	4	2	4	1		22	7.3
11.	North Texas .....	2	3	3	6	4	2	5	2	2		29	9.6
12.	Maryville, Tenn. ....	7	3	2	4	1	3	4	2	2		28	9.3
13.	Eureka .....	4	4	3	1	2	2	5	4	1		26	8.6
14.	Concordia .....	2	5	1	1	5	3	1	1	6		25	8.3
15.	Iowa Wesleyan .....	5	2	3	2	3	3	6	2	2		28	9.3
16.	Sioux Falls .....	5	3	3	4	3	1	1	3	5		30	10
17.	Heidelberg .....	4	4	4	3	1	2	3	3	3		27	9
18.	Johnson City .....	2	1	5	5	1	2	3	2	1		22	7.3
19.	Akron .....	1	1	2	2	4	4	6	5	6		31	
19.	DeKalb .....	6	2	3	2	1	3	4	7	3		31	
19.	Monmouth .....	4	6	2	6	3	5	1	1	3		31	
22.	Aberdeen .....	2	1	3	3	5	6	4	6	2		32	
22.	Coe .....	2	3	4	6	4	5	3	2	3		32	
22.	Kansas Wesleyan .....	1	1	5	2	5	4	6	4	4		32	
22.	Kent State .....	3	1	6	2	2	5	4	3	6		32	
22.	South Dakota State .....	5	5	5	4	6	1	3	2	1		32	
22.	Wheaton .....	1	3	6	3	4	3	3	5	4		32	
28.	Jamestown .....	5	4	6	1	1	4	1	6	5		33	
29.	Baldwin-Wallace .....	5	5	4	3	3	6	1	6	1		34	
29.	Colorado State .....	3	7	4	2	2	1	7	6	2		34	
29.	Michigan State .....	2	3	6	3	6	2	5	4	3		34	
29.	Pittsburg, Kansas .....	3	7	6	1	5	4	5	2	1		34	
33.	Illinois Wesleyan .....	2	3	2	7	2	7	3	3	6		35	
33.	Park .....	4	3	1	5	6	1	5	7	3		35	
35.	Dakota Wesleyan .....	7	5	7	7	1	1	3	2	4		37	
35.	Fort Hays .....	3	4	2	4	5	6	4	4	5		37	
37.	Bethany .....	6	4	7	2	4	1	4	5	5		38	
37.	Colby .....	3	4	6	4	3	6	7	3	2		38	
37.	St. Vincent .....	1	7	5	6	5	2	5	3	4		38	



	Semi-Finals	Total	Average	Finals	Totals
1. Wake Forest .....	3 1 1 1 1	13	1.4	1 3 1 4 1 2 1	20.4
2. Nebraska Wesleyan .....	1 3 3 1 1	15.3	1.8	2 5 2 5 2 4 3	31.1
3. College of Pacific .....	3 4 4 1 2	19.3	2.8	4 1 3 2 4 5 5	32.1
4. Augustana, Illinois .....	2 5 3 2 3	23.3	3	5 2 5 3 6 1 2	35.3
5. St. Olaf .....	1 2 2 3 2	18.6	2	3 4 4 6 3 3 6	39.6
6. Redlands .....	2 2 2 4 5	22.6	3	6 6 6 1 5 6 4	44.6
7. Augustana, South Dak. ....	5 1 5 3 2	23.6			
8. Hastings .....	5 5 3 2 1	24.3			
9. Baylor .....	6 5 4 2 3	24.6			
10. Yankton .....	4 3 5 3 4	26.3			
11. North Texas .....	6 1 1 6 3	26.6			
12. Maryville, Tenn. ....	3 2 1 6 6	27.3			
13. Eureka .....	2 6 2 5 5	28.6			
14. Concordia .....	4 4 6 4 4	30.3			
15. Iowa Wesleyan .....	5 4 4 5 4	31.3			
16. Sioux Falls .....	4 3 5 4 6	32			
17. Heidelberg .....	1 6 6 5 6	33			
18. Johnson City .....	6 6 6 6 5	36.3			

#### EXPLANATION OF THE METHOD OF RANKING ORATORS

The eighteen orators with the lowest totals from the three preliminary rounds went into the semifinals. In order to prevent the records of the preliminaries, where there were nine judges in the three contests and where the competition was less severe, from counting too heavily, the decisions were reduced to averages.

The rankings of the Wake Forest orator are used to explain the method employed. In the three preliminary rounds his rankings were 1 2 2, 3 1 1, 2 1 5. These are reduced to averages by adding each set and dividing by 3. The results are  $1\frac{2}{3}$ ,  $1\frac{2}{3}$ ,  $2\frac{2}{3}$ , which add up to 6, his total for the preliminaries.

The semifinals are given more weight. The rankings of the five judges, 3 1 1 1 1, are added to the 6 carried forward from the preliminaries, making a total of 13. The six orators with the lowest totals advance to the finals. After that the sum of the Wake Forest orator's ranks in the semifinals, 7, was divided by 5, giving  $1\frac{2}{5}$ , his average for the semifinals. This was then added to the 6 brought forward from the preliminaries, making  $7\frac{2}{5}$ .

This sum is added to the rankings given him by the seven judges in the finals, 1 3 1 4 1 2 1, making  $20\frac{2}{5}$ , his final total.

## MEN'S ORATORY

(Continued)

Rank	College	Preliminaries									Total
40.	Missouri Valley .....	5	5	1	5	1	6	5	5	6	39
41.	Georgetown .....	3	4	4	6	4	4	7	1	7	40
41.	Illinois State Normal U. ....	7	6	5	4	6	3	2	5	2	40
41.	Louisiana College .....	4	6	4	7	4	6	3	5	1	40
41.	Puget Sound .....	2	5	5	4	7	5	4	7	1	40
45.	Bowling Green .....	6	6	6	3	4	2	7	4	3	41
45.	Centre .....	5	4	4	5	6	6	2	6	3	41
47.	Macomb .....	4	6	6	1	7	4	4	4	6	42
47.	Ouachita .....	6	7	1	6	3	5	3	4	7	42
49.	River Falls .....	4	6	3	7	3	5	6	3	7	43
50.	Linfield .....	3	5	3	4	7	4	6	6	6	44
51.	North Carolina State .....	7	2	4	5	4	5	7	7	5	46
52.	Central, Iowa .....	5	2	5	7	6	7	4	4	7	47
53.	North Central .....	3	7	6	7	7	7	6	3	2	48
54.	San Marcos .....	7	6	5	2	7	4	6	6	6	49
54.	Southwest Louisiana .....	5	6	4	6	5	6	5	5	7	49
56.	Oklahoma Baptist .....	6	3	3	6	7	7	6	5	7	50
56.	St. Thomas .....	6	6	7	5	5	5	2	7	7	50
56.	College of Idaho .....	6	7	7	3	6	5	5	6	5	50
59.	East Texas .....	6	5	7	6	2	7	7	7	4	51
60.	Transylvania .....	7	4	7	7	7	7	6	6	4	55
61.	Baker .....	6	7	7	5	6	7	7	7	5	57



# Women's Oratory



## ROUND I

The numbers indicate the order in which the speakers placed, not that in which they spoke.

Group A. 1, Louise Blackwell, Mary Hardin-Baylor; 2, Nan Coon, Sioux Falls; 3, Carolyn Sandine, Rollins; 4, Betty Lamb, Eureka; 5, Lucille Ellis, Pittsburg; 6, Opal Wigner, Pittsburg; 7, Janet Miller, Iowa Wesleyan.

Group B. 1, Barbara Roberts, Baylor; 2, Thelma Walsh, Bradley; 3, Helen Ruby Arnold, Simpson; 4, Dorothy Schrader, Park; 5, Dathel Janes, Oklahoma Baptist; 6, Lucille Gross, Aberdeen; 7, Muriel Mallison, S. W. Louisiana.

Group C. 1, Mary Agnes Pehl, San Marcos; 2, Adele Weymouth, Coe; 3, Audrey Adams, William Jewell; 4, Avis Bekke, Augustana, South Dakota; 5, Phyllis Stevens, Monmouth; 6, Barbara Healy, Puget Sound; 7, Ella Holt, Edmond.

Group D. 1, Barbara Daily, Macalester; 2, Audra Claypool, Cape Girardeau; 3, Alda Gregory, Lenoir Rhyne; 4, Helen Powell, North Texas; 5, Betty South, Illinois State Normal U.; 6, Marjorie Moore, William Penn.

Group E. 1, Barbara Hudson, St. Olaf; 2, Lynne Anderson, Nebraska Wesleyan; 3, Ardo Walker, Maryville; 4, Betty Jane Warren, Washburn; 5, Flora Peterson, Wheaton; 6, Louise Burns, Ouachita; 7, Lucille Roberts, Luther.

Group F. 1, Janice Shuler, Hastings; 2, Barbara Lacquement, Bethany; 3, Elma Swanson, Yankton; 4, Nancy Rankin, Redlands; 5, Marjorie Christy, Gustavus Adolphus; 6, Mary Renaud, Central Iowa; 7, Elizabeth Parker, Farmville.

Group G. 1, Joanna Algodelis, Akron; 2, Jacqueline Wilken, Colorado State; 3, Frances Anderson, Linfield; 4, Mavis Peterson, S. D. State; 5, Marguerite Hansen, Concordia; 6, Wanda Mae Scott, Fort Hays.

## ROUND II

(Names of orators are found under Round I.)

Group A. 1, Washburn; 2, South Dakota State; 3, Cape Girardeau; 4, Iowa Wesleyan; 5, Gustavus Adolphus; 6, Edmond and S. W. Louisiana (tied).

Group B. 1, Simpson; 2, Nebraska Wesleyan; 3, Bethany; 4, Puget Sound; 5, Eureka; 6, Concordia.

Group C. 1, Sioux Falls; 2, Hastings; 3, Bradley; 4, Lenoir Rhyne; 5, Coe; 6, Fort Hays; 7, Ouachita.

(Continued on page 134)

# Women's Oratory

## JUDGES' RANKINGS

Rank	College	Preliminaries									Averages			
1.	Nebraska Wesleyan .....	2	2	1	2	3	1	3	7	1	23	2	2	3.6
2.	Linfield .....	4	4	2	1	2	1	4	6	3	27	3.3	1.3	4.3
3.	Sioux Falls .....	1	2	5	1	1	1	2	1	1	15	2.6	1	1.3
4.	St. Olaf .....	1	1	4	4	1	1	2	1	2	17	2	2	1.6
5.	Akron .....	2	2	1	1	2	1	5	3	4	21	1.6	1.3	4
6.	Hastings .....	1	3	5	2	3	4	4	6	2	30	3	3	4
7.	Simpson .....	2	5	3	1	1	2	2	1	1	18	3.3	1.3	1.3
8.	Colorado State .....	1	1	6	4	2	3	1	5	3	26	2.6	3	3
9.	San Marcos, Texas .....	1	3	1	2	1	2	1	5	4	20	1.6	1.6	3.3
10.	Washburn .....	4	5	2	1	1	3	6	3	5	30	3.6	1.6	4.6
11.	William Jewell .....	5	1	4	2	3	2	1	2	5	25	3.3	2.3	2.6
12.	Oklahoma Baptist .....	3	6	6	3	2	3	1	4	1	29	5	2.6	2
13.	Mary Hardin Baylor .....	2	3	1	3	5	5	3	3	1	26	2	4.3	2.3
14.	Illinois State Normal U. ....	4	4	5	1	5	1	4	2	1	27	4.3	2.3	3
15.	Redlands .....	3	4	4	4	4	4	1	1	6	31	3.6	4	2.6
16.	Cape Girardeau, Mo. ....	1	2	3	5	6	1	3	2	2	25	2	4	2.3
17.	Bradley Polytechnic .....	5	2	2	3	5	3	2	3	4	29	3	3.6	3
18.	Coe .....	4	2	3	5	4	2	1	4	5	30	3	3.6	3.3
19.	Macalester .....	3	6	2	4	2	5	1	6	3	32			
19.	Baylor .....	1	1	5	5	1	5	6	6	2	32			
19.	Lenoir Rhyne .....	3	6	2	4	2	5	1	6	3	32			
22.	Pittsburg, Kansas .....	4	5	4	2	3	6	5	2	2	33			
22.	Yankton .....	7	2	2	5	5	6	2	2	2	33			
24.	South Dakota State .....	7	3	3	2	4	2	3	4	6	34			
25.	Rollins .....	7	1	3	1	4	4	5	7	4	36			
26.	Bethany .....	2	1	7	5	2	3	6	5	6	37			
26.	Monmouth .....	3	4	6	5	6	2	3	2	6	37			
26.	Wheaton .....	5	3	5	6	4	6	2	1	5	37			
29.	William Penn .....	6	5	6	7	1	3	3	3	4	38			
30.	Augustana, South Dakota.....	2	5	5	3	6	4	7	2	5	39			
31.	Central, Iowa .....	6	6	1	5	5	5	5	3	4	40			
32.	Gustavus Adolphus .....	4	5	3	3	5	6	4	5	6	41			
32.	Maryville, Tenn. ....	2	4	3	6	7	7	4	5	3	41			
32.	Park .....	4	3	4	3	7	4	6	4	6	41			
35.	Puget Sound .....	6	7	2	3	4	5	6	6	3	42			
36.	Eureka .....	5	6	2	4	6	4	4	7	5	43			
37.	Aberdeen .....	7	7	1	2	3	6	6	6	6	44			
37.	North Texas .....	5	3	4	6	7	7	6	4	2	44			



Rank	College	Semi-Finals	Total	Average	Finals	Final Total
1.	Nebraska Wesleyan .....	2 3 1 4 2	19.6	2.4	1 3 3 5 2 2 1	25.0
2.	Linfield .....	3 2 2 2 3	20.9	2.4	2 2 4 1 3 1 3	27.3
3.	Sioux Falls .....	1 1 5 1 1	13.9	1.8	4 4 2 2 5 5 5	33.7
4.	St. Olaf .....	5 1 6 4 1	22.6	3.4	5 3 1 4 1 6 6	35.0
5.	Akron .....	1 5 1 1 3	17.9	2.2	3 5 6 6 4 3 2	38.1
6.	Hastings .....	4 2 3 1 1	21.0	2.2	6 6 5 3 6 4 4	46.2
7.	Simpson .....	2 3 6 4 2	22.9			
8.	Colorado State .....	1 4 2 3 5	23.6			
9.	San Marcos, Texas .....	3 1 5 5 4	24.5			
10.	Washburn .....	2 2 4 2 6	25.8			
11.	William Jewell .....	3 6 3 3 5	28.2			
12.	Oklahoma Baptist .....	6 4 2 5 2	28.6			
13.	Mary Hardin-Baylor .....	5 5 7 2 3	30.6			
14.	Illinois State Normal U. ....	4 3 5 6 4	30.9			
15.	Redlands .....	5 5 3 6 4	33.2			
16.	Cape Girardeau, Mo. ....	4 6 4 5 6	33.3			
17.	Bradley Polytechnic .....	6 4 6 3 5	33.6			
18.	Coe .....	6 6 4 6 6	37.9			



LYNNE ANDERSON  
Nebraska Wesleyan  
First in Oratory

Miss Anderson is a speech major who plans to teach next year. She has been coaching a squad of twelve high school debaters. She has won six major titles and holds the degree of special distinction in debate and oratory. She represented Nebraska in the Interstate Oratorical contest April 25.

## WOMEN'S ORATORY

(Continued from page 131)

	Preliminaries										Total
39. Concordia .....	6	3	4	6	5	6	5	5	5	5	45
40. Illinois Wesleyan .....	6	7	7	7	6	5	2	3	3		46
40. Ouachita .....	6	7	6	7	6	7	5	1	1		46
42. Iowa Wesleyan .....	6	4	7	6	3	4	5	5	7		47
43. Edmond, Oklahoma .....	7	6	7	4	7	5	4	1	7		48
43. Farmville, Virginia .....	5	7	6	6	4	2	7	4	7		48
43. Kent State .....	3	7	6	7	6	7	3	6	3		48
46. Southwest Louisiana .....	6	4	7	7	2	7	7	7	7		54
47. Fort Hays, Kansas .....	5	5	5	6	7	6	7	7	7		55
48. Luther .....	7	6	7	7	7	7	7	7	4		59

## WOMEN'S ORATORY

(Continued)



NAN COON

Sioux Falls,  
South Dakota Epsilon

Third in Oratory

Group D. 1, Akron; 2, Aberdeen; 3, William Penn; 4, Redlands; 5, Mary Hardin-Baylor; 6, Monmouth; 7, Maryville, Tennessee.

Group E. 1, Illinois State Normal U.; 2, Colorado State; 3, Baylor and Pittsburg (tied); 5, Farmville; 6, Augustana, S. D.; 7, Luther.

Group F. 1, Linfield; 2, San Marcos; 3, Macalester; 4, Park; 5, Iowa Central; 6, Wheaton; 7, Kent State.

Group G. 1, St. Olaf; 2, William Jewell; 3, Oklahoma Baptist; 4, Rollins; 5, Yankton; 6, Illinois Wesleyan; 7, North Texas.

## ROUND III

(Names of the orators will be found under Round One.)

Group A. 1, Redlands; 2, Bradley; 3, Nebraska Wesleyan; 4, North Texas; 5, Linfield; 6, Augustana, South Dakota; 7, Iowa Wesleyan.

Group B. 1, Simpson; 2, Colorado State; 3, Monmouth; 4, Hastings; 5, Washburn; 6, Rollins; 7, Macalester.

Group C. 1, St. Olaf; 2, Illinois State Normal U.; 3, Coe; 4, Kent State; 5, Akron; 6, Bethany; 7, S. W. Louisiana.



Group D. 1, Oklahoma Baptist; 2, Wheaton; 3, Pittsburg; 4, William Penn; 5, Gustavus Adolphus; 6, Puget Sound; 7, Fort Hays.

Group E. 1, Yankton; 2, Mary Hardin-Baylor; 3, Lenoir Rhyne; 4, Edmond; 5, Concordia; 6, Park; 7, Luther.

Group F. 1, Sioux Falls; 2, William Jewell; 3, Iowa Central; 4, Maryville, Tennessee; 5, South Dakota State; 6, Baylor.

Group G. 1, Ouachita; 2, Cape Girardeau; 3, Illinois Wesleyan; 4, San Marcos; 5, Eureka; 6, Farmville; 7, Aberdeen.

### SEMI-FINALS

Group A. 1, Nan Coon, Sioux Falls; 2, Frances Anderson, Linfield; 3, Lynne Anderson, Nebraska Wesleyan; 4, Nancy Rankin, Redlands; 5, Thelma Walsh, Bradley; 6, Audra Claypool, Cape Girardeau.

Group B. 1, Joanna Alogdelis, Akron; 2, Betty Jane Warren, Washburn; 3, Barbara Hudson, St. Olaf; 4, Dathel Janes, Oklahoma Baptist; 5, Audrey Adams, William Jewell; 6, Betty South, Illinois State Normal U.

Group C. 1, Janice Shuler, Hastings; 2, Jacqueline Wilken, Colorado State; 3, Louise Blackwell, Mary Hardin-Baylor; 4, Helen Arnold, Simpson; 5, Mary Agnes Pehl, San Marcos; 6, Adele Weymouth, Coe.

### FINALS

1. Lynne Anderson, Nebraska Wesleyan, "Misses Anonymous."
2. Frances Anderson, Linfield College, "I Discover America."
3. Nan Coon, Sioux Falls College, "Let Us Deal Wisely With Them."
4. Barbara Hudson, St. Olaf College, "Scrofula."
5. Joanna Alogdelis, University of Akron, "The American College Student."
6. Janice Shuler, Hastings College, "Fridtjof, Nansen, 1930."

Speakers who made the semi-finals only were awarded a rating of "Excellent"; those who made the finals, "Superior".

# *Men's Extempore Speaking*



## ROUND I

The numbers indicate the order in which the speakers placed, not that in which they spoke.

Group A. 1, Arthur Langland, Dakota Wesleyan; 2, Hiram Goad, East Texas; 3, Richard Johansen, Macalester; 4, Edmund Linn, Iowa Wesleyan; 5, Jack Oliver, Park; 6, Victor Peck, Emporia Teachers; 7, Albert Lockhart, Akron; 8, Phillip Giangrosso, Illinois Wesleyan.

Group B. 1, Gordon Carpenter, North Texas; 2, Albert Boucher, Bowling Green; 3, Harold Ditmanson, St. Olaf; 4, Harold Birch, Central, Iowa; 5, Kenneth Canfield, Yonkton; 6, John Sneed, Missouri Valley; 7, Robert Pugh, Eureka; 8, James Bean, Southwest Louisiana Institute.

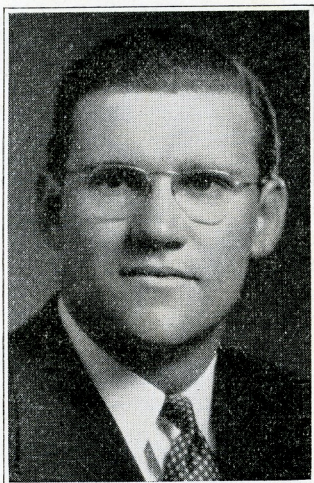
Group C. 1, Lester Kaminsky, Baylor; 2, Jefferson Croft, Nebraska Wesleyan; 3, Richard Schiefelbusch, Pittsburgh; 4, Bernard Erling, Gustavus Adolphus; 5, Irwin Johnson, South Dakota State; 6, Charles Campbell, Monmouth; 7, George Caswell, Upper Iowa; 8, Vernon Beal, Kent State.

Group D. 1, Frank Bauder, Coe; 2, Russell Greenfield, Sioux Falls; 3, W. R. Rucker, San Marcos; 4, John Keltner, Illinois State Normal U.; 5, Omar Moore, Doane; 6, Russell Holloway, Oklahoma A. & M.; 7, Ed Beauchamp, Baker; 8, Patrick Henry, Hamline.

Group E. 1, Ben Rogge, Hastings; 2, Phil Banks, Aberdeen; 3, James Wood, Sterling; 4, Herbert Zachery, Oklahoma Baptist; 5, Guy E. Oliver, Jr., North Central; 6, Bruce Ratchford, North Carolina State; 7, J. F. Scroggin, Mississippi State; 8, Robert Roseberry, Western Union.

Group F. 1, Paul Swinford, Ada; 2, Carl Burness, Redlands; 3, Eugene Morrison, Kearney; 4, Emmet Eklund, Bethany; 5, Lee Jarrell, Louisiana College; 6, Carl Bailey, Concordia; 7, Kenneth Raschke, Augustana, South Dakota; 8, Don Hoke, Wheaton.

Group G. 1, Clifford Proctor, Maryville, Tennessee; 2, Sam Gilman,



CLARK G. BURNES  
Redlands, California Alpha  
First in extemp and debate

Senior. Four years' experience. Honors in debate, oratory, extemp, and dramatics. Plans to do graduate work in speech next year. "Worked four years with the intention of winning the national tournament."



Augustana, Illinois; 3, Robert Giertsen, Ripon; 4, Gene Carlile, Fort Hays; 5, C. Truesdell, Caltec; 6, John Martin, Edmond; 7, Steve Grubb, Chadron.

Group H. 1, William Biddick, College of the Pacific; 2, John Wiley, DeKalb; 3, Ward Martin, Tusculum; 4, Marvin Silverman, Heidelberg; 5, Martin Lucente, River Falls; 6, Preston Pew, Grove City.

Group I. 1, Charles Anderson, Jamestown; 2, Walter Slowinsky, St. Vincent; 3, Winton Mizell, Ouachita; 4, Bob Goldberg, Wake Forest; 5, Robert Hall, Colorado State; 6, Henry Hartley, Johnson City; 7, Robert Bratcher, Georgetown.

Group J. 1, Charles Sparks, Michigan State; 2, John Adams, Linfield; 3, Vance Graham, John B. Stetson; 4, Dugald Hudson, Presbyterian; 5, Leon Toby, Colby; 6, Lawrence Henderson, Puget Sound; 7, Vance Daniel, Lenoir Rhyne.

## ROUND II

(Names of speakers will be found under Round I.)

Group A. 1, Ada; 2, San Marcos; 3, Chadron; 4, River Falls; 5, Illinois Wesleyan; 6, Colby; 7, Georgetown; 8, Aberdeen.

Group B. 1, North Carolina State; 2, Eureka; 3, Augustana, South Dakota; 4, Iowa Wesleyan; 5, Linfield; 6, Mississippi State; 7, Jamestown; 8, Edmond.

Group C. 1, Louisiana College; 2, Monmouth; 3, Wake Forest; 4, Central Iowa; 5, Maryville, Tennessee; 6, College of Puget Sound; 7, Emporia Teachers; 8, Grove City.

Group D. 1, Illinois State Normal U.; 2, Macalester; 3, Lenoir Rhyne; 4, St. Vincent; 5, Upper Iowa; 6, Tusculum; 7, Southwestern Louisiana.

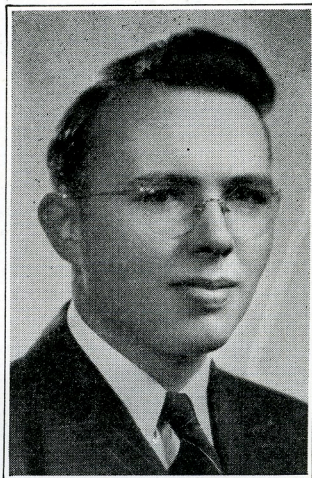
Group E. 1, St. Olaf; 2, Park; 3, Pittsburg; 4, Johnson City; 5, Coe; 6, Presbyterian; 7, North Central.

Group F. 1, Michigan State; 2, Akron; 3, Wheaton; 4, Gustavus Adolphus; 5, Missouri Valley; 6, Baker; 7, Western Union.

Group G. 1, Augustana, Illinois; 2, Nebraska Wesleyan; 3, Sterling; 4, Redlands; 5, Bowling Green; 6, Hamline; 7, Dakota Wesleyan.

Group H. 1, DeKalb; 2, Caltec; 3, Yankton; 4, East Texas; 5, Bethany; 6, Doane; 7, Kent State.

Group I. 1, College of the Pacific; 2, South Dakota State; 3, Ouachita;



RICHARD JOHANSEN  
Macalester, Minnesota Alpha  
Second in Extemp

A North Dakota farm boy who is graduating this spring with an economics major and a minor in speech. Received a rating of excellent in debate at the 1938 convention. Special distinction in debate and extemp.

4, Fort Hays; 5, Oklahoma A. & M.; 6, Hastings; 7, North Texas; 8, Concordia.

Group J. 1, Baylor; 2, Sioux Falls; 3, Oklahoma Baptist; 4, John B. Stetson; 5, Heidelberg; 6, Colorado State; 7, Ripon; 8, Kearney.

### ROUND III

Group A. 1, Hamline; 2, Central, Iowa; 3, Hastings; 4, Ada; 5, Pittsburg; 6, Maryville, Tennessee; 7, Illinois Wesleyan.

Group B. 1, Eureka; 2, Baker; 3, Tusculum; 4, Edmond; 5, Kearney.

Group C. 1, Concordia; 2, Monmouth; 3, Johnson City; 4, Coe; 5, Chadron; 6, Sterling; 7, Grove City.

Group D. 1, Ripon; 2, Illinois State Normal U.; 3, Bethany; 4, North Carolina State; 5, Michigan State; 6, St. Vincent; 7, East Texas; 8, Western Union.

Group E. 1, Redlands; 2, Wake Forest; 3, Dakota Wesleyan; 4, River Falls; 5, North Central; 6, Fort Hays; 7, North Texas; 8, Presbyterian.

Group F. 1, Jamestown; 2, Baylor; 3, Caltec; 4, Heidelberg; 5, Wheaton; 6, Yankton; 7, Lenoir Rhyne; 8, Akron.

Group G. 1, Augustana, Illinois; 2, Bowling Green; 3, San Marcos; 4, South Dakota State; 5, College of the Pacific; 6, Puget Sound; 7, Park; 8, Georgetown.

Group H. 1, Macalester; 2, Linfield; 3, Sioux Falls; 4, DeKalb; 5, Kent State; 6, Colorado State; 7, Missouri Valley; 8, Mississippi State.

Group I. 1, St. Olaf; 2, Nebraska Wesleyan; 3, Oklahoma A. & M.; 4, Louisiana College; 5, Emporia Teachers; 6, Aberdeen; 7, Ouachita; 8, Colby.

Group J. 1, Augustana, South Dakota; 2, Iowa Wesleyan; 3, Gustavus Adolphus; 4, John B. Stetson; 5, Oklahoma Baptist; 6, Doane; 7, Southwestern Louisiana.

### SEMI-FINAL ROUND

Group A. 1, Carl Burness, Redlands; 2, Charles Anderson, Jamestown; 3, John Wiley, DeKalb; 4, Lester Kaminsky, Baylor; 5, Bob Goldberg, Wake Forest; 6, Jefferson Croft, Nebraska Wesleyan; 7, John Adams, Linfield.

Group B. 1, Richard Johansen, Macalester; 2, Harold Ditmanson, Se. Olaf; 3, Harold Birch, Central, Iowa; 4, Russell Greenfield, Sioux Falls; 5, Edmund Linn, Iowa Wesleyan; 6, W. R. Rucker, San Marcos; 7, Charles Sparks, Michigan State.

Group C. 1, Paul Swinford, Ada; 2, Sam Gilman, Augustana, Illinois; 3, William Biddick, College of the Pacific; 4, John Keltner, Illinois State Normal U.; 5, Frank Bauder, Coe; 6, Charles Hall, Louisiana College; 7, Ben Rogge, Hastings.

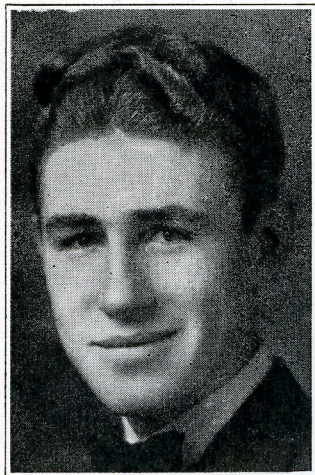


## FINALS

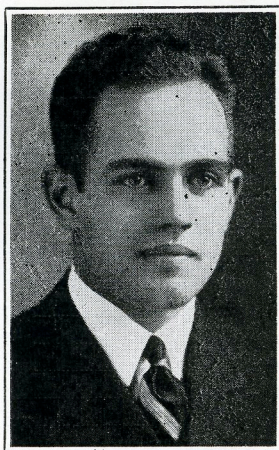
1. Carl Burness, University of Redlands, "Radio and Democracy."
2. Richard Johansen, Macalester College, "Does Starvation in the Midst of Plenty Threaten Democracy?"
3. Lester Kaminsky, Baylor University, "Does the Far East Situation Threaten Democracy?"
4. Sam Gilman, Augustana, Illinois, "F. B. I.—Gestapo or Guardian?"
5. Paul Swinford, East Central State Teachers, Ada, Oklahoma, "Does Political Corruption Threaten Democracy?"
6. Harold Ditmanson, St. Olaf College, "Censorship as a Threat to Democracy."

Those who made the semi-finals only were awarded a rating of "Excellent", while those who made the finals received "Superior".

---



RICHARD SCHIEFELBUSCH  
Pittsburg Teachers, Kansas  
Theta  
Tied for Third in debate



EUGENE DAWSON  
Pittsburg Teachers, Kansas  
Theta

Dawson and Schiefelbusch were the only team to come through the eight preliminary rounds of the men's tournament undefeated.

# Men's Extempore Speaking

## JUDGES' RANKINGS

Rank	College	Preliminaries										Total	Average
1.	Redlands .....	1	1	5	6	1	3½	1	1	2		21½	7.2
2.	Macalester .....	2	5	3	2	2	3	3	1	1		22	7.3
3.	Baylor .....	1	2	1	2	2	1	3	1	2		15	5
4.	Augustana, Illinois .....	3	2	2½	1	2	1½	4	2	2		20	6.7
5.	East Central, Ada .....	2	2	1	3	1	2	6	2	5		24	8
6.	St. Olaf .....	3	2	4	1	1	5	1	1	1		19	6.3
7.	College of the Pacific .....	3	2	1	4	1	1	3	7	1		23	7.7
7.	DeKalb .....	2	5	2	1	1	2	5	3	2		23	7.7
9.	Jamestown .....	4	2	1	8	8	4	1	3	1		32	10.7
10.	Sioux Falls .....	2	4	3	3	1	2	2	4	3		24	8
11.	Illionis State Normal U. ....	5	2	3½	4	1	2	2	5	1		25½	8.5
12.	Central, Iowa .....	4	4	3	2	3	6	2	4	3		31	10.7
13.	Nebraska Wesleyan .....	2	1	5	2	4	3	3	2	2		24	8
14.	Coe .....	1	1	1	6	2	7	5	4	2		29	9.7
15.	San Marcos, Texas .....	3	3	3	5	3	1	1	4	5		28	9.3
16.	Iowa Wesleyan .....	5	4	4	6	1	6	1	2	3		32	10.7
17.	Michigan State .....	3	2	1	2	1	1½	4	6	3		23½	7.8
18.	Louisiana .....	5	6	2	1	2	5	4	4	3		32	10.7
19.	Hastings .....	4	2	1	6	2	5	3	3	6		32	10.7
20.	Wake Forest .....	2	3	6	5	1	3	3	2	1		26	8.7
21.	Linfield .....	1	3	4	3	3	8	1	2	4		29	9.7
22.	Eureka .....	6	6	7	1	6	2	1	3	1		33	
22.	Maryville, Tenn. ....	1	3	2	4	6	2	5	6	4		33	
22.	Monmouth .....	5	7	4	3	5	1	1	2	5		33	
22.	Ripon .....	2	4	3	5	7	8	1	1	2		33	
22.	South Dakota State .....	7	5	3	3	3	2	5	1	4		33	
27.	Augustana, South Dakota ....	7	7	7	4	2	3	2	1	1		34	
27.	Bowling Green .....	1	3	5	5	5	5	2	5	3		34	
27.	Johnson City .....	6	4	3	4	3	4	3	1	6		34	
27.	Pittsburg .....	4	6	2	2	4	3	7	5	1		34	
27.	River Falls .....	5	3	3	2	4	4	2	3	8		34	
27.	Sterling .....	7	1	3	3	3	3	4	6	4		34	
33.	John B. Stetson .....	2	6	2	4	5	5	3	3	6		36	
33.	North Carolina State .....	6	8	2	2	4	1	5	4	4		36	
33.	Oklahoma Baptist .....	2	4	7	1	6	3	5	4	4		36	
33.	St. Vincent .....	7	1	2	3	5	1	7	2	8		36	
37.	Dakota Wesleyan .....	1	2	2	7	6	6½	4	5	3		36½	
38.	Tusculum .....	1	4	5	6	6	5	5	1	4		37	
39.	East Texas .....	4	1	1	6	4	3	6	7	6		38	
39.	Yankton .....	7	5	1	4	5	1	2	6	7		38	



Rank	College	Semi-Finals	Total	Average	Finals	Total	Final Total
1.	Redlands .....	1 4 1 1 2	16.2	3.18	1 2 3 1 3 1 1	12	15.18
2.	Macalester .....	3 1 2 1 2	16.3	4.24	5 3 1 4 1 5 3	22	26.24
3.	Baylor .....	4 5 4 5 1	24.	5.46	6 6 2 2 4 3 2	25	30.46
4.	Augustana, Illinois .....	3 1 1 4 4	19.7	4.82	2 4 5 6 2 2 5	26	30.82
5.	East Central, Ada .....	1 3 2 2 1	17.	4.46	4 1 6 5 5 4 4	29	33.46
6.	St. Olaf .....	2 5 1 2 1	17.3	4.31	3 5 4 3 6 6 6	33	37.31
7.	College of the Pacific.....	2 4 7 3 2	25.7				
7.	DeKalb .....	2 2 3 7 4	25.7				
9.	Jamestown .....	6 1 2 4 3	26.7				
10.	Sioux Falls .....	4 3 7 3 3	28.				
11.	Illinois State Normal U.	7 5 4 1 3	28.5				
12.	Central, Iowa .....	1 2 6 4 6	29.7				
13.	Nebraska Wesleyan .....	5 3 6 2 6	30.				
14.	Coe .....	5 2 3 7 6	32.7				
15.	San Marcos, Texas .....	7 6 4 5 4	35.3				
16.	Iowa Wesleyan .....	5 4 3 6 7	35.7				
17.	Michigan State .....	6 7 5 7 5	37.8				
18.	Louisiana .....	4 7 6 6 5	38.7				
19.	Hastings .....	6 6 5 5 7	39.7				
20.	Wake Forest .....	3 6 5 3 5	40.7				
21.	Linfield .....	7 7 7 6 7	43.5				

For an explanation of the method of figuring ranks, see page 129.

# THE FORENSIC OF

## MEN'S EXTEMPORE SPEAKING

(Continued)

	Preliminaries										Total
41. Caltec .....	4	7	5½	2	2	4	5	5	4		38½
42. Bethany .....	3	4	6	5	3	7	3	3	5		39
42. Chadron .....	7	5	6	1	2	6	6	3	3		39
42. Heidelberg .....	4	1	6	7	3	4	6	2	6		39
45. Gustavus Adolphus .....	3	3	6	6	3	4½	4	5	2		39½
46. Fort Hays .....	5	1	3	2	4	7	6	8	4		40
47. Oklahoma A. & M. ....	6	7	6½	5	5	3	2	3	4		41½
48. Lenoir Rhyne .....	7	7	5	1	3	4	7	4	5		43
49. North Texas .....	2	1	2	8	6	6	8	6	5		44
49. Onachita .....	1	6	4	1	7	4	8	5	8		44
49. Park .....	6	6	5	3	5	1	6	6	6		44
52. Concordia .....	6	5	3	7	8	8	2	5	1		45
52. Kearney, Nebraska .....	4	3	4	8	8	7	3	5	3		45
54. Doan .....	4	5	4½	3	7	5	6	6	5		45½
55. Aberdeen .....	1	6	4	8	8	8	5	7	7		46
55. Hamline .....	7	8	7½	4	7	5½	4	1	2		46
55. Presbyterian .....	6	1	3	7	7	2	7	7	6		46
58. Baker .....	8	6	7	7	4	5½	2	2	5		46½
59. Colorado State .....	3	5	5	6	4	6	7	5	6		47
59. North Central .....	5	3	6	5	6	6	5	4	7		47
59. Wheaton .....	8	8	8	1	5	3	4	7	3		47
62. Edmond .....	6	6	6	7	7	7	4	4	2		49
63. Colby .....	4	4	7	6	6	3	6	8	6		50
63. Puget Sound .....	5	5	6	6	7	4	7	3	7		50
65. Akron .....	3	8	7	4	2	3	8	8	8		51
65. Illinois Wesleyan .....	7	7	8	4	5	5	1	7	7		51
67. Missouri Valley .....	5	7	6	3	6	4½	8	7	5		51½
68. Mississippi State .....	3	5	8	5	5	5	6	8	7		52
69. Emporia Teachers .....	8	3	6	7	4	7	7	6	5		53
70. Kent State .....	8	8	7	7	6	6	4	6	8		60
71. Grove City .....	6	6	4	8	8	8	7	7	7		61
71. Western Union .....	8	7	5	5	7	6	8	8	7		61
73. Southwest Louisiana .....	8	8	8	5	7	7	7	7	7		64



# Women's Extempore Speaking



The numbers indicate the order in which the speakers placed, not that in which they spoke.

Group A. 1, Barbara Dailey, Macalester; 2, Ida Nellie Daily, Ouachita; 3, Mary Jane Groh, Emporia; 4, Mary Louise Renaud, Central, Iowa; 5, Helen Noteboom, Dakota Wesleyan; 6, Georgia Peterman, Eureka; 7, Louise Byrnes, East Texas; 8, Ida May Stevens, Michigan State.

Group B. 1, June Halligan, University of Detroit; 2, Elmerine Sherman, Simpson; 3, Julia Mangan, Mary Hardin-Baylor; 4, Lucille Ellis, Pittsburg; 5, Jane Kottke, Hamline; 6, Phillis Stevens, Monmouth; 7, Elum Swanson, Yankton.

Group C. 1, Barbara Lacquemont, Bethany; 2, Lois Mallon, Baylor; 3, Lorraine Rawlings, Coe; 4, Lois Halliday, Illinois State Normal U.; 5, Marjorie Moore, William Penn; 6, Jeanette Unruh, South Dakota State; 7, Helen Jamison, Colorado State.

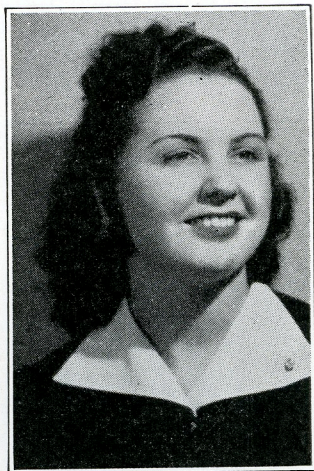
Group D. 1, Dathel Jones, Oklahoma Baptist; 2, Jean Park, Sioux Falls and Kathleen Jones, San Marcos; 4, Ruth Roberts, Luther; 5, Marjorie Hendricks, Gustavus Adolphus; 6, Virginia Lowell, Wheaton; 7, Elizabeth Collings, Grove City.

Group 1. 1, Virginia Crawford, Nebraska Wesleyan; 2, Carol Zank, Concordia; 3, Alda Gregory, Lenoir Rhyne; 4, Faye Cooper, North Texas; 5, Bruce Johnson, Ada; 6, Barbara Healy, Puget Sound; 7, Marjorie Wood, DeKalb; 8, Faithe Mantel, Aberdeen.

Group F. 1, Dorothy Schrader, Park; 2, Harriet Miller, Maryville, Tennessee; 3, Marjorie Marsh, Hastings; 4, Evelyn Driver, Augustana, South Dakota; 5, Juanita Chauncey, Akron; 6, Jean Genovese, Illinois Wesleyan.

Group G. 1, Helen Welch, Central, Missouri; 2, Addah Ludden, Kearney; 3, Harriet Elhoff, Madison; 4, Catherine Behnke, Heidelberg; 5, Cloy Lawrimore, Winthrop; 6, Christine Griffin, Alabama; 7, Virginia Martin, Tusculum.

Group H. 1, Frances Anderson, Linfield; 2, Marjorie Chindahl, Rol-



LOIS MALLON  
Baylor, Texas Iota  
First in Extemp

Miss Mallon is a scholastic phenomenon. She is not only a double winner in forensics. She is also graduating from college this spring at the tender age of eighteen, the age of the average freshman.

lins; 3, Elizabeth Hayes, Carroll; 4, Elma Rogers, Chadron; 5, Louise Snyder, Warrensburg; 6, Alice O'Sickey, Kent State.

## ROUND II

(The names of the speakers are given under Round I.)

Group A. 1, San Marcos; 2, Michigan State; 3, Concordia; 4, Coe; 5, Carroll; 6, Madison, S. D.

Group B. 1, Rollins; 2, North Texas; 3, Luther; 4, University of Detroit; 5, Winthrop; 6, Akron; 7, Colorado State; 8, Emporia Teachers.

Group C. 1, Park; 2, Pittsburg; 3, Nebraska Wesleyan; 4, Dakota Wesleyan; 5, Heidelberg; 6, William Penn.

Group D. 1, Lenoir Rhyne; 2, Bethany and Hastings; 4, Yankton; 5, Central, Missouri; 6, Kent State; 7, Eureka and Grove City.

Group E. 1, Macalester; 2, Monmouth; 3, Oklahoma Baptist; 4, Kearney; 5, South Dakota State; 6, Puget Sound.

Group F. 1, Illinois State Normal U.; 2, Hamline; 3, Sioux Falls; 4, Ada; 5, Chadron; 6, Illinois Wesleyan; 7, East Texas.

Group G. 1, Maryville, Tennessee; 2, Mary Hardin-Baylor; 3, Alabama; 4, Aberdeen; 5, Wheaton; 6, Central, Iowa.

Group H. 1, Linfield; 2, Baylor; 3, DeKalb; 4, Simpson; 5, Gustavus Adolphus; 6, Augustana, South Dakota; 7, Ouachita; 8, Tusculum.



FRANCES ANDERSON

Linfield, Oregon Alpha

Second in debate and extempore

During her four years she has garnered most of the speech honors along the Pacific which are open to women. Born in China. Spent one summer in Germany.

## ROUND III

Group A. 1, Park; 2, Kearney; 3, Michigan State; 4, Concordia; 5, Pittsburg; 6, Wheaton; 7, South Dakota State.

Group B. 1, Central, Missouri; 2, University of Detroit; 3, Ouachita; 4, Bethany; 5, Sioux Falls and Chadron; 7, DeKalb; 8, Akron.

Group C. 1, Oklahoma Baptist; 2, Aberdeen; 3, Illinois Wesleyan; 4, Central, Iowa; 5, William Penn; 6, Heidelberg.

Group D. 1, Ada; 2, Simpson; 3, Augustana, South Dakota; 4, Colorado State; 5, Winthrop; 6, East Texas; 7, Grove City; 8, Kent State.

Group E. 1, Macalester; 2, Coe; 3, Maryville, Tennessee; 4, Mary Hardin-Baylor; 5, Puget Sound; 6, Madison.

Group F. 1, Eureka; 2, Baylor; 3, Rollins; 4, Hamline; 5, Lenoir Rhyne; 6, Luther; 7, Tusculum.



Group G. 1, Nebraska Wesleyan; 2, San Marcos; 3, Dakota Wesleyan; 4, Alabama; 5, Monmouth; 6, Carroll.

Group H. 1, Hastings; 2, Linfield; 3, Illinois State Normal U.; 4, Yankton; 5, North Texas; 6, Emporia Teachers; 7, Gustavus Adolphus.

### SEMI-FINAL ROUND

Group A. 1, Addah Ludden, Kearney; 2, Alda Gregory, Lenoir Rhyne; 3, June Halligan, University of Detroit; 4, Dorothy Schrader, Park; 5, Kathleen Jones, San Marcos; 6, Harriet Miller, Maryville, Tennessee.

Group B. 1, Virginia Crawford, Nebraska Wesleyan; 2, Marjorie Marsh, Hastings; 3, Lois Mallon, Baylor; 4, Barbara Dailey, Macalester; 5, Lorraine Rawlings, Coe; 6, Jane Kottke, Hamline.

Group C. 1, Jean Park, Sioux Falls; 2, Frances Anderson, Linfield; 3, Dathel Janes, Oklahoma Baptist; 4, Helen Welch, Central, Missouri; 5, Marjorie Chindahl, Rollins; 6, Julia Mangan, Mary Hardin-Baylor.

### FINALS

(The figures at the left show the order in which the speakers placed in the whole contest; those in parentheses at the right the order in which they placed in the final contest alone.)

1. Lois Mallon (1), Baylor University, "Will the Extension of the Forum Movement Counteract Threats to Democracy?"
2. Frances Anderson (4), Linfield, "What is to You the Weakest Aspect of a Democracy?"
3. Marjorie Marsh (3), Hastings, "Starvation in the Midst of Plenty—a Threat to Democracy."
4. Jean Park (2), Sioux Falls College, "FBI—Gestapo—Guardian."
5. Virginia Crawford (5), Nebraska Wesleyan, "Is American Youth Ripe for Hitler?"
6. Addah Ludden (6), Kearney State Teachers, Nebraska, "Is Political Sectionalism a Threat to Democracy?"

Those who made the semi-finals were rated "Excellent". Those who made the Finals, "Superior".

# Women's Extempore Speaking

## JUDGES' RANKINGS

Rank	College	Preliminaries										Total	Average
1.	Baylor .....	1	4	2	1	4	1	1	3	2		19	6.33
2.	Linfield .....	1	4	1	2	1	2	3	1	2		17	5.66
3.	Hastings .....	3	3	2	4	1	3	1	2	1		20	6.66
4.	Sioux Falls .....	1	4	2	4	3	2	6	4	4		30	10
5.	Nebraska Wesleyan .....	2	1	5	6	2	3	1	1	3		24	8
6.	Kearney State Teachers .....	1	4	2	6	3	1	5	1	1		24	8
7.	Macalester .....	1	1	2	1	2	3	4	1	1		16	5.33
8.	Lenoir Rhyne .....	4	2	4	2	2	1	5	6	3		29	9.66
9.	Park .....	1	1	3	2	1	1	3	2	2		16	5.33
10.	Oklahoma Baptist .....	3	1	1	2	4	4	2	1	1		19	6.33
11.	Detroit .....	3	2	2	4	4	4	2	3	2		27	9
12.	Maryville, Tennessee .....	2	5	1	1	2	1½	1	2	4		19½	6.5
13.	San Marcos, Texas .....	2	2	3	2	1	2	2	2	2		18	6
14.	Rollins .....	3	1	2	2	3	2	3	2	5		23	7.66
15.	Coe .....	2	2	3	6	3	4	2	3	2		27	9
16.	Central, Missouri .....	3	2	1	6	6	4	3	1	1		27	9.
17.	Mary Hardin-Baylor .....	1	3	5	3	1	2	3	6	3		27	9.
18.	Hamline .....	4	1	7	2	4	1	2	4	4		29	9.66
19.	Illinois State Normal U. ....	4	3	5	1	1	4	2	7	3		30	10
20.	Concordia .....	3	5	1	1	6	3	2	4	6		31	
21.	Bethany .....	3	1	1	3	3	2	7	5	3		32	
21.	Ada, Oklahoma .....	8	4	2	3	2	6	1	2	4		32	
21.	Pittsburg, Kansas .....	5	4	3	1	3	2	6	3	5		32	
21.	Simpson .....	2	5	1	5	3	5	5	5	1		32	
25.	North Texas .....	1	3	7	1	6	1	5	4	5		33	
25.	Ouachita .....	2	2	1	8	8	3	1	2	6		33	
27.	Michigan State .....	7	8	7	1	2	1	1	6	4		37	
27.	Alabama .....	4	7	6	2	4	3	4	3	4		37	
29.	Monmouth .....	7	6	4	1	3	4	5	6	3		39	
29.	Dakota Wesleyan .....	6	6	5	3	5	4	5	4	1		39	
31.	Aberdeen .....	7	7	8	4	3	3½	1	3	3		39½	
32.	Augustana, South Dakota.....	4	4	4	6	7	4	2	1	8		40	
33.	Carroll .....	2	2	6	4	4	6	6	6	5		41	
33.	Heidelberg .....	5	3	4	5	4	5	5	6	4		41	
33.	Luther .....	6	3	4	7	1	3	6	5	6		41	
33.	Winthrop .....	2	6	5	3	2	8	4	4	7		41	
37.	Central, Iowa .....	4	3	4	6	6	6	4	4	5		42	
37.	Madison .....	6	1	3	5	5	5	6	5	6		42	
39.	Illinois Wesleyan .....	5	6	5	5	7	5	6	2	2		43	



Rank		Semi-Finals	Total	Total	Average in S. F.	Finals	Total	Final Total
1.	Baylor .....	1 3 3 5 1	13	19.33	2.6	1 1 1 1 4 1 1	10	18.93
2.	Linfield .....	2 3 1 1 1.75	8.75	14.41	1.75	5 3 4 4 1 6 2	25	32.41
3.	Hastings .....	2 2 2 4 3	13	19.66	2.62	2 4 2 2 6 5 3	24	33.26
4.	Sioux Falls .....	1 1 2 3 1.75	8.75	18.75	1.75	4 2 3 3 3 3 4	22	33.75
5.	Neb. Wesleyan .....	3 1 1 3 2	10	18	2.	3 5 6 5 5 2 6	32	42.
6.	Kearney Teach. ....	2 1 2 2 1	8	16	1.6	6 6 5 6 2 4 5	34	43.6
7.	Macalester .....	4 4 5 1 4	18	23.33				
8.	Lenoir Rhyne .....	4 2 1 3 4	14	23.66				
9.	Park .....	5 5 3 1 5	19	24.33				
10.	Okla. Baptist .....	4 6 3 2 3.75	18.75	25.08				
11.	Detroit .....	1 3 4 6 3	17	26				
12.	Maryville, Tenn. ..	6 4 6 5 2	23	29.5				
13.	San Marcos .....	3 6 5 4 6	24	30				
14.	Rollins .....	6 2 6 4 4.5	22.5	30.16				
15.	Coe .....	5 6 4 2 5	22	31				
16.	Central, Mo. ....	5 4 4 5 4.5	22.5	31.5				
17.	Hardin-Baylor ....	3 5 5 6 4.75	23.75	32.75				
18.	Hamline .....	6 5 6 6 6	29	38.66				
19.	Ill. St. Nor. U. ....	6 6 6 6 6	30	40				

For an explanation of the method of figuring ranks, see page 129.

After her double win at the National Convention, Lois Mallon of Baylor, Texas Iota, went to the tournament of the Southern Association of Teachers of Speech at Chattanooga, Tennessee, April 2-4, for another double victory, extempore and after-dinner speaking. Lester Kaminsky and Calvin Mansell, the Baylor team which tied for third at Knoxville, won the men's tournament at Chattanooga. Durant Teachers, Oklahoma Theta, won second in the women's tournament. Denton Teachers, Texas Eta, was second in the junior college tournament. Lester Kaminsky was second in extempore. Thelma Thompson of Durant and Nelma Williams of Denton tied for second in women's extempore. Betty Jane Timlin of Denton won the women's oratorical contest. Professor Glenn Capp, newly elected member of the National Council, was made director of the speech tournament for the fourth time.