

# NECROLOGY REPORT

Presented by R. David Ray at the 37th Annual National Convention and Tournament at Monmouth College, West Long Branch, New Jersey, March 1991

■ As we pause to pay respect to those of our PKD family no longer with us since last we met, our feelings are expressed in the poem entitled, "Memory" by Ellen Howarth:

*"Where is the heart that doth not keep,  
Within its inmost core,  
Some fond remembrance hidden deep,  
Of days that are no more?"*

**PROFESSOR GEORGE V. BOHMAN** passed away during the winter of 1989. He served as Province Governor of the Sioux in 1934, National Vice-President of Pi Kappa Delta from 1936-38, coached at Dakota Wesleyan, taught at Dartmouth and chaired the Department for many years at Wayne State University in Detroit. George was a fellow graduate colleague of Larry Norton at the University of Wisconsin. George Bohman authored several scholarly works on Colonial Public Address in America. He is survived by his wife Gladys and two sons.

**PROFESSOR JOHN BURT**, former Forensic Director and Communications Educator at Illinois Wesleyan continued to serve Pi Kappa Delta even after his "health" caused his early retirement. He was a major contributor and leader in our Constitutional Revision during the 70's and early 80's. He served as Parliamentarian at the 1979 St. Louis Convention and was an Associate Editor of the Forensic. He attended National Conventions at his own expense to continue his association with Pi Kappa Delta. He was the recipient of the Beard's Award at LaCrosse, Wisconsin recognizing his devotion and dedication to the ideals of our organization. In every way possible he represented "the art of persuasion, beautiful and just."

*Tribute Offered to remember **ED LEONARD** of Seton Hall - By Richard Knight*

The Province of the Colonies deeply regrets the loss of a friend and brother, **ED LEONARD**, who passed away in September of 1989. Many of us remember Ed from the PKD national tournament at St. Louis, where Ed was awarded a Superior award in Dramatic Interpretation and an Excellent award in Impromptu Speaking.

Ed amassed over 150 awards in his 3 years on the Seton Hall team. Ed will always be remembered for his great success in forensics, but more importantly, he will be remembered as a truly selfless person who was very modest about the feats he accomplished. He emulated the true spirit of friendliness, and taught many of us the true meaning of Pi Kappa Delta through his actions. We will miss Ed very much, but we hope that he will remain in your hearts as he always will in ours.



# MISSOURI PSI, OKLAHOMA TAU, AND ARKANSAS THETA RECOGNIZED WITH PI KAPPA DELTA PRESIDENT'S OUTSTANDING CHAPTER AWARD

By President Terry W. Cole

■ Honoring any Pi Kappa Delta chapter is a difficult task since there are so many deserving of honor. The chapters nominated for the 1989-1991 Outstanding Chapter Award are no exception. Excellence abounds in Pi Kappa Delta. In awarding the Outstanding Chapter Award, I single out three chapters who not only manifest the spirit of Pi Kappa Delta, but offer themselves as models of a chapter's commitment to diversity, community service, and campus service. It is my pleasure to recognize these chapters and commend them to Order.

The Missouri Psi Chapter at University of Missouri - St. Louis, demonstrated how diverse a chapter can be in pursuit of "The Art of Persuasion, Beautiful and Just." Under the sponsorship of Scott Jensen and C. Thomas Preston, Jr. and led by Chapter President Kathleen Willis, the Missouri Psi Chapter compiled a truly outstanding record of activity and service. Integrating its chapter into the life of its institution, Missouri Psi provided financial support for scholarships for needy students to UMSL's high school forensics workshop, sponsored the Oxford Union for a visitation debate on the campus, and presented public performances to both public schools and civic audiences. Not content with this service, the chapter adopted a needy family and supported its commitment with a recycling project and provided volunteer coaches for area high school programs. While serving its campus and community, Missouri Psi actively (and successfully) competed in debate, individual events, and parliamentary debate competition. Finally, since 1989, this active chapter has hosted nine major tournaments on its campus including the Novice Nationals Individual Events Tournament and the 1989 Pi Kappa Delta Biennial Tournament. Truly deserving of this honor, this chapter exemplifies the true strength of Pi Kappa Delta.

If Pi Kappa Delta has strength, it also has heart. No chapter has so successfully demonstrated the heart of Pi Kappa Delta as well as exemplifying the applied value of "The Art of Persuasion, Beautiful and Just," than the Oklahoma Tau Chapter at Bartlesville Wesleyan College. Sponsored by Julia Bodenhamer and led by Chapter President Jim Shelley, the Oklahoma Tau Chapter exemplifies the best of service excellence. Hardly a month of the academic year goes by without the chapter engaging in some form of service to its community - public performances, high school and junior high school festivals, a telethon for Habitat for Humanity. Interwoven with community service is campus



service such as hosting forensics tournaments, assisting the Campus Ministries council, and producing a monthly cable TV show "Discovering Wesleyan College." Perhaps its most outstanding achievement and contribution is its continuing sponsorship of a Puppet Theatre on Child Abuse. Initially begun to assist the county health department, Oklahoma Tau assumed total sponsorship of this valuable outreach program when county funding was lost. In 1989-90 alone, over thirty performances were presented to area elementary schools. Its impact is evidenced by a sad event; when three 4th grade girls were sexually abused, the rural county school requested that the chapter perform its sexual abuse script. This script is now requested by other area schools on an annual basis. Pi Kappa Delta in the service of others is the ultimate application of all that we are about. In demonstrating the absolute potential of this objective, Oklahoma Tau deserves our highest honor.

How many Pi Kappa Delta chapters can demonstrate that they are a totally integrated presence on their respective campuses? The Arkansas Theta Chapter at the University of Arkansas at Monticello can educate all of us as a model of campus presence. Under the sponsorship of Past National President R. David Ray and led by Chapter President Tracy King, the Arkansas Theta Chapter has established itself as a total presence on its campus. Chapter initiations include a series of student union speeches by initiates. The Chapter hosts and displays its talents in a campus wide talent show. Members of the Arkansas Theta Chapter hone their competitive excellence in the public forum of the campus by presenting practice performances in the student union. These are but a few of the regular ways in which this outstanding chapter integrates itself into the life of the University of Arkansas at Monticello. With such outgoing and enthusiastic members, it is little wonder that this chapter has also established itself by its excellence in forensics competition. If "The Art of Persuasion, Beautiful and Just" is to have any real meaning, it must be publically demonstrated. By showing its entire campus the true meaning of our motto, the Arkansas Theta Chapter deserves an Outstanding Chapter Award.

Missouri Psi, Oklahoma Tau, and Arkansas Theta are but three of the one hundred and twenty-two active chapters in Pi Kappa Delta. By their designation as Outstanding Chapters, they not only exemplify the best that is meant by "The Art of Persuasion, Beautiful and Just," they also serve as outstanding role models for all Pi Kappa Delta chapters. I congratulate these outstanding chapters and thank them for their significant contributions to Pi Kappa Delta.

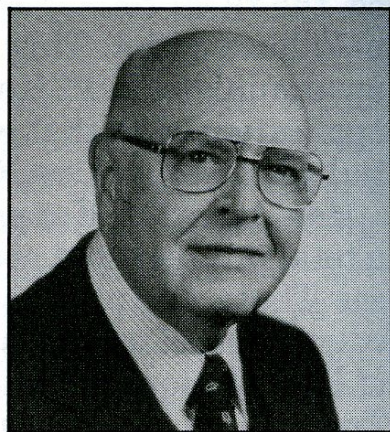


# PI KAPPA DELTA HALL OF FAME

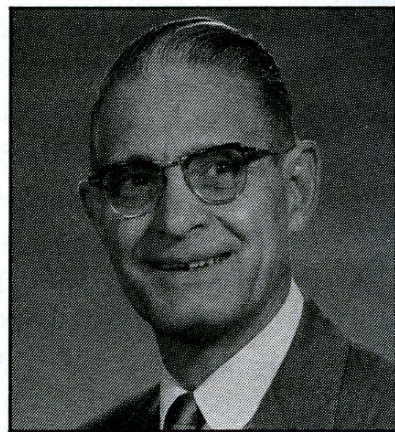
Members Inducted at the 37th Convention and Tournament  
West Long Branch, New Jersey, March 1991

By R. David Ray

■ **ROY MURPHY** -- The Chapter of Pi Kappa Delta at Southwestern Louisiana University was a model chapter under the direction of Murphy. He was host to the Provincial Convention and Tournament on several occasions. He served with distinction on the National Council from 1953-1967, and was National President 1963-65. His period as President was marked by improvements in Pi Kappa Delta too detailed to list. A Colleague noted, "he was efficient, popular, and reliable -- reflecting the true spirit of Pi Kappa Delta."



**SYLVESTER TOUSSIAINT** -- Served national PKD for 15 years (1930-53) in the following capacities: Governor 1930-32; Third Vice-President 1930-32; Second Vice-President 1932-34; First Vice-President 1934-36; President 1936-38; Past President 1938-40; and Secretary/Treasurer 1948-53. He was an active member of PKD committees and contributed much to **The Forensic**. Toussiant delivered the keynote address at the 50th Anniversary convention in Carbondale, Illinois in 1963. The speech entitled "This is Our Heritage" was used as valuable reference to the history of PKD.



## Dr. Terry Cole Recognized for Outstanding Teaching

By Jane Nicholson, Appalachian State University

Appalachian State University alumni and professors, and Watauga County news media were recognized for outstanding service to the university at the alumni association's annual awards banquet May 3.

Receiving an Outstanding Teaching Award was Dr. Terry Cole. Cole, chairman of the College of Fine and Applied Arts' Department of Communication, came to Appalachian in 1971 by way of California. He earn-



ed bachelor's and master's degrees from Fresno State College and a doctorate from the University of Oregon in 1974.

Cole was director of forensics at Appalachian from 1973 to 1988. He was named communications department chair in 1990. Cole has been active in campus and community activities. He is a member of the Faculty Senate, a past member of the Faculty Grievance Mediation Committee and has served as an orientation advisor and forensics coach. Cole is a member of the Southern Speech Communication Association, and a member and national president of Pi Kappa Delta National Forensics Fraternity.

His community activities include membership in the Boone Lions Club and work with the Boy Scouts of America (BSA). He is currently the district commissioner of the Watauga District BSA.

Cole is married to Marny Cole, a programmer analyst in Appalachian's computer and management systems department. They have two sons: John, a junior civil engineer major at UNC-Charlotte; and Jamie, a freshman art education major at Western Carolina University.

## COACHES' CORNER

By Dr. Graham S. Kash  
Tennessee Technical University

■ Fellow forensicators, have you made or heard comments of discouragement at the end of a tournament? "He was illogical." "She was discourteous." "They were incoherent." To avoid that talked-down feeling, we may need to discard our idealism and have a *realistic speech tournament*. I present these recommendations in the form of a glossary. To clarify any difficulties in meaning, consult such related works as Ambrose Bierce's *The Devil's Dictionary* and Jonathan Swift's *A Modest Proposal*.

*after dinner speaking*: An attemptedly humorous talk which may impede digestion.

*communicative analysis*: See *rhetorical criticism*.

*constructive speech*: 1. [obsolescent] A speaker's "construction" of a logical argument. 2. [vogueish] An eight-minute destructive discourse divided as follows: a. Four minutes of charging that the other side does not know how to debate CEDA; b. Two minutes of boasting that one's own side does know how; c. Two minutes of attention to the supposed topic. (In the first affirmative constructive, a. may be omitted and b. expanded to six minutes.

*cross examination*: In debate, a three minute exercise of mutual interruptions and shoutdowns, with the code expression "Thank you, that's enough!" meaning "Shut up--I'm afraid you're about to say something which might help your own case!"

*debate*: 1. [archaic] A reasoned examination of the sides of a controversial question, with the proceedings conducted in such a way that most people can understand them. 2. [current forensic] A contest of esoteric



jargon, such as "Flip that dis-ad and cross-apply it to the third V.O. in 2 N.C."

*debater*: 1. [infrequent] A speaker who calmly learns the principles of argumentation through research, reflection, practice, coaches, judges, colleagues, opponents, and observers. 2. [widespread] An oratorical seer who promptly prophesies the impending doom of the opposition and the inevitable triumph of one's own side.

*duo dramatic interpretation*: A contest in which two partners attempt to outscreech each other.

*extemporaneous speaking*: After thirty minutes of preparation, a seven-minute speech on epidemics, earthquakes, elections, or other current catastrophes.

*impromptu*: An unprepared speech on an unfamiliar quotation.

*informative*: A persuasive speech which presents information on only one side of a question.

*machine gun*: In debate, the inclusion of the maximum number of words within the time limits. --See also *shotgun*.

*persuasion*: An event in which the speaker states a personal opinion, quotes supposed authorities who support it, and ignores contrary views.

*poetry interpretation*: A verse piece which is intended as either dismal or hilarious, but sometimes the judge has trouble telling which is which.

*prose interpretation*: An oral presentation of an obscure narrative which is mutilated in cutting, tediously explained, and comprehensible only to the author (and perhaps to the interpreter).

*rebuttal*: 1. The previous eight-minute constructive speech spoken twice as fast to fit into four or five minutes. 2. [often combined with 1.] A period of calisthenics for the judge, whom the speakers urge to "put all those points together and pull 'em across that line to our side!" 3. [occasional] A summary of the most pertinent points of contention, with the introduction of additional evidence.

*rhetorical criticism*: A form of persuasion in which the speaker impersonates a rhetorician. -- See also *persuasion*.

*shotgun*: In debate, the inclusion of the maximum number of sub-sub points within the time limits. --See also *machine gun*.

*solo dramatic interpretation*: A play-reading event in which the presenter makes several characters sound like the same one, who really is not any of them.

*speech coach*: A travel agent and van driver whose forensic advice is occasionally heeded --Usually the same as *speech judge* (q.v.)

*speech judge*: A biased arbitrator who is always to blame for a loss by a team or an individual. --Usually the same as *speech coach* (q.v.)

*time keeper*: [obsolete] a helper who formerly freed the judge to look at the speaker and write on the ballot.

Yes, lay aside your frustrations and standards. Join me in promoting a *realistic speech tournament*. I'll see you on the circuit.



# 1991 NATIONAL TOURNAMENT CHAMPIONS



**ORAL HISTORY** Superior: Ottawa University.  
Excellent: Cameron University, Southwest Baptist, North Dakota State



**EXTEMP** Superior standing L-R: Stacy Fewings, Moorhead State; Andrea Friednauer, St. Cloud; Brad Hoeschen, St. Cloud; Richard Knight, Seton Hall; Frank Kapusinski, Seton Hall. Seated L-R: Dana Perino, Southern Colorado; Michael Fuller, Pacific Lutheran; Richard Delancey, West Chester.  
Excellent: Brian Pauls, Bethel (KS); David Jones, William Jewell; Mindy Fenske, Moorhead State; John Dies, Sam Houston; John Burke, Northern State; Lisa Wade, William Jewell; Claude Taylor, West Chester; James Stillman, Cameron; Kathleen Dugan, Linfield; Kelly McDonald, Pacific Lutheran; Leslie Larson, South Dakota State; Rebecca Tally, Youngstown State; Amy Liunstra, Pacific Lutheran; Shawna Dunn, Boise State; Deborah Smith, William Jewell; Marc Johnson, Puget Sound.





**INFORMATIVE Superior** standing L-R: Brooks Aylor, Arkansas State; Carmen Pauls, Bethel (KS); Jaime Whitethorn, Concordia; Dan Higgins, Heidelberg. Seated L-R: Al Mueller, Wilkes; Mary Coakley, Seton Hall; Leah White, Concordia. Excellent: Tanya Tennyson, Harding; Denelle Christoffers, Concordia; Mary Hoffman, Winona; Shannon Smith, Cameron; Whitney Sugarman, Seton Hall; Ed Skaggs, Southwest Baptist; Joy Hinkel, West Chester; Danielle Liautaud, Seton Hall; Amy Vaughn, Wilkes; Teresa Herman, Wilkes; Kristen Senander, Puget Sound; Tara Fletcher, Bethel (MN); Tricia Bartell, Moorhead (MN); Amy Sielander, Wisconsin-Eau Claire; Wendy Johnson, Pacific Lutheran.



**DUO Superior** standing L-R: Jones/Foy, Georgetown; Pennington/Coy, Morehead State (KY); Sangl/Schrank, South Dakota State; Fuller/Newkirk, Southwest Baptist. Seated L-R: Rebollo/Harton, West Texas State; Russell/Norton, Southwest Texas.

Excellent: Carter/Close, Northwest Nazarene; Johnson/Trickle, Concordia; Shillcutt/Stroup, Central Arkansas; Scott/St. Clair, Abilene Christian; Fry/Stacks, Arkansas Tech; Harder/Schultz, Winona State; Butler/Lucas, West Florida; Gomez/Plum, Moorhead State (MN); Clay/Craft, Morehead State (KY); Bailey/Franklin, Youngstown State; Conrad/Tinsley, Ottawa.





**PROSE Superior** seated L-R: Keith Koupal, South Dakota State; Becky Haverly, Southwest State University; Byron Norton, Southwest Texas; Andy Mangum, West Texas; Ed Skaggs, Southwest Baptist; Tammy Thomas, Arkansas State; Misty Saul, Marshall; Al Franklin, Youngstown State; Todd Fuller, Southwest Baptist. Seated center: Todd Scott, Abilene Christian; Rachel Craft, Morehead State (KY); Larry Coy, Morehead State (KY); Ava Coffee, Arkansas State; Kelly Russell, Southwest Texas. Seated front: Rob Sangl, South Dakota State; Penni Pier, Moorhead State (MN); Viva Hagen-Pond, University of Mary; Kim Sarchione, Heidelberg. Excellent: Gretchen Wetherill, Youngstown State; Danielle Liautaud, Seton Hall; Randy Forster, Wisconsin-Stout; Joey Stacks, Arkansas Tech; David Bailey, Youngstown State; Barbara Roseman, Georgetown; De Ann Newkirk, Southwest Baptist; Tracy Knutson, Central Missouri; Sheri Patterson, Arkansas Tech; Michelle Rebolla, West Texas; Chance Pennington, Morehead State (KY); Mary Coakley, Seton Hall; Vincent Ordina, Midland Lutheran; Janet Farmer, Southern Colorado; Hal Stroupe, Central Arkansas; Whitney Sugarman, Seton Hall; Cary Shillcutt, Central Arkansas; Natlon Bennett, Arkansas State; Melissa John, Concordia; Eric Abraham, St. Olaf; Eric Gomez, Moorhead State (MN); Theresa Venette, North Dakota State; Nancy Hendren, Northwest Missouri; Wendy Patzlaff, South Dakota State; Becky Pfeiffer, Northern State; Rob Epp, Bethel (KS); Melinda Boll, North Dakota State; Dawn Carusi, West Chester; Cathy Jones, Georgetown; Ann Tandy, Wisconsin-Eau Claire; Dorthy Weaver, Transylvania; Kellie McIvor, Heidelberg; Joy Hinkel, West Chester; Tracey Ashley, Heidelberg; Tammy Close, Northwest Nazarene; Al Mueller, Wilkes.





**ARGUMENT ANALYSIS Superior** L-R: Renee Wilson, Northern State; Sandra Herren, Southwest Baptist; Anne Davie, Seton Hall.  
**Excellent:** Andy Mangum, West Texas; Becky McKay, Bethel (KS); Sean Behymer, Southwest Baptist; Vickie Choitz, Fort Hayes; Teri Buster, Southwest Baptist; Becky Haverly, Southwestern State University.



**PERSUASION Superior** standing L-R: Anne Davie, Seton Hall; Erin Lucas, West Florida; April Erdmann, Morehead State (KY); Chance Pennington, Morehead State (KY); Kristen Pavelec, Puget Sound; Norene Walton, Western Washington; Andy Mangum, West Texas State; Sandra Herren, Southwest Baptist; Todd Fuller, Southwest Baptist. Seated L-R: Jaime Whitethorn, Concordia; Leah White, Concordia; Mindy Feske, Moorhead State (MN).  
**Excellent:** Rich Knight, Seton Hall; Ronald Wronko, Monmouth; Mindy Clark, Morehead State (KY); Denelle Christoffers, Concordia; Andrea Friedenauer, St. Cloud; Brad Hoeschen, St. Cloud; Misty Saul, Marshall; Wendy Johnson, Pacific Lutheran; Frank Kapusinski, Seton Hall; Denalie Silha, North Dakota State; Whitney Sugarman, Seton Hall; Amy Sielander, Wisconsin-Eau Claire; Dee Ann Newkirk, Southwest Baptist; Craig Lair, Harding; Kelly Melvin, Marshall; Jack Vines, Southwest Baptist; Lori Rhone, South Dakota State; Tammy Gream, University of Mary; Barbara Mitchell, Southwest Baptist; Caren Heffner, West Chester; Leslie Goff, Georgetown; Teri Buster, Southwest Baptist; Paul Suskie, Central Arkansas; Cindy Tinsley, Ottawa.





**IMPROMPTU** Superior standing L-R: Paula Phillips, Cameron; Mindy Fenske, Moorhead State (MN); Leah White, Concordia; Michael Fuller, Pacific Lutheran; Kim Goetz, Pacific Lutheran; Paul Hood, Missouri State; Richard Knight, Seton Hall; Frank Kapusinski, Seton Hall; Sandra Herren, Southwest Baptist; Teri Buster, Southwest Baptist. Seated center: Brian Pauls, Bethel (KS); Larry Coy, Morehead State (KY); John Dies, Sam Houston. Seated front: Mary Hoffman, Winona State; Stacey Dixon, Morehead State (KY); Brenda Betzold, Moorhead State (MN); Brad Hoeschen, St. Cloud. Not shown: Lisa Wade, William Jewell.

Excellent: Wendy Johnson, Pacific Lutheran; Rebecca Tally, Youngstown State; Al Mueller, Wilkes; Melissa Taylor, Transylvania; Amy Darnell, Morehead State (KY); Sean Behymer, Southwest Baptist; Dana Perino, Southern Colorado; Alissa Williams, Arkansas State; Anne Davie, Seton Hall; Eric Abraham, St. Olaf; Leslie Larson, South Dakota State; Ronald Wronko, Monmouth; Michelle Rebolla, West Texas; Tim Conrad, Ottawa; Neil Strine, Bloomsburg; Amy Sielander, Wisconsin-Eau Claire; Frank Guiseffi, Central Missouri; Mike Corcoran, York; Danny Langford, Tennessee Tech; Sarah Simpson, Fort Hays; Guste Elfving, Old Dominion; Kellie Elkins, Central Arkansas; D.L. Richardson, Montevallo; David Crain, Southwest Baptist; Erin Lucas, West Florida; Derek Sweetman, Fort Hays; Jeff Dixon, Concordia; Jack Vines, Southwest Baptist; Craig Adams, Texas A & I; Brad Culp, Georgetown; Stacey Fewings, Moorhead State (MN); Pearl Rea, Henderson; Jane Ingvaldstad, St. Olaf; Matt Butler, West Florida; Jonathan Weems, Henderson State.





**COMMUNICATION ANALYSIS Superior** standing L-R: Denalie Silha, North Dakota State; Anne Davie, Seton Hall; Abraham Eric, St. Olaf. Seated L-R: Leah White, Concordia; Caren Hepner, West Chester. Insert: Sandra Herrin, Southwest Baptist.

**Excellent:** Tara Fletcher, Bethel (MN); Jane Ingvaldstad, St. Olaf; Mindy Clark, Morehead State (KY); Rachel Craft, Morehead State (KY); Andy Magnum, West Texas; Erin Lucas, West Florida; Lynette Sharp, Abilene Christian; Renee Wilson, Northern State; Kellie McIvor, Heidelberg; Teri Buster, Southwest Baptist; Joe Perrone, West Chester.



**ADS Superior** standing L-R: Kellie McIvor, Heidelberg; Bruce Brinkman, Winona; Todd Fuller, Southwest Baptist. Seated L-R: April Erdmann, Morehead State (KY); Larry Coy, Morehead State (KY); Anne Davie, Seton Hall.

**Excellent:** Jaime Whitethorn, Concordia; Randy Forster, Wisconsin-Stout; Travis Yoakum, Southwest Baptist; Andy Mangum, West Texas; Karen Miller, Arkansas Tech; Leah White, Concordia; Bret Leiker, Fort Hays; Brenda Betzold, Moorhead State (MN); Sean Behymer, Southwest Baptist; Laurie Holm, Concordia; Jim Evans, Missouri Southern; Paula Phillips, Cameron.



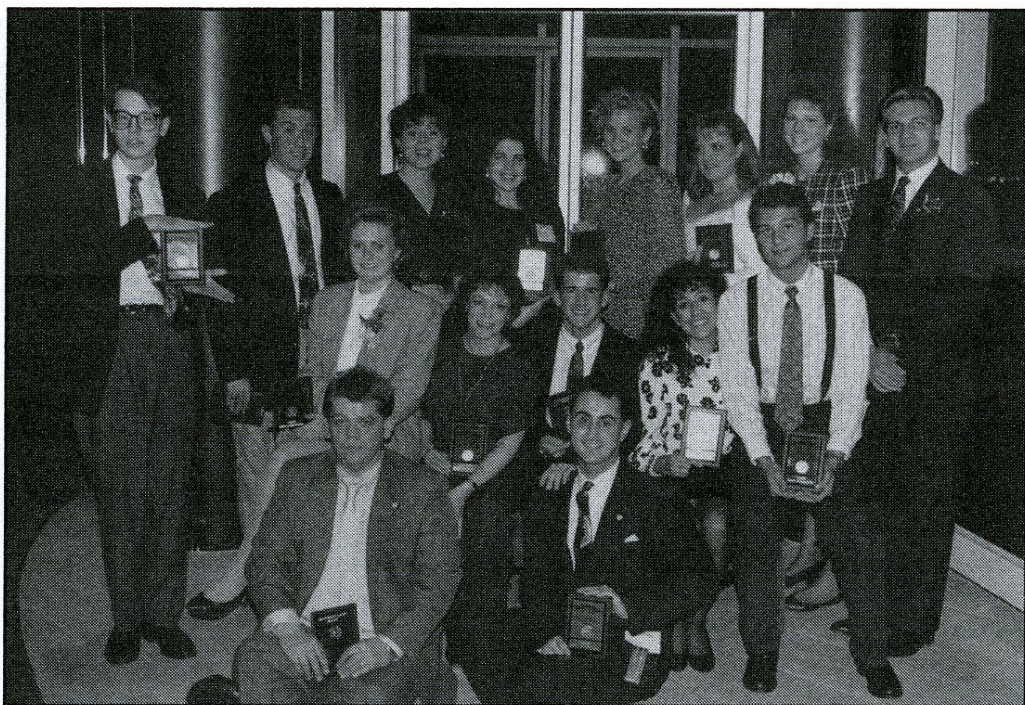


**DRAMATIC INTERP.** Superior standing L-R: Wendy Patzlaff, South Dakota State; Cathy Jones, Georgetown; David Bailey, Youngstown State; Ed Skaggs, Southwest Baptist; Norene Walton, Western Washington; Tammy Jerns, Western Washington; Carrie Daubenspeck, Cameron. Seated L-R: Rob Sangl, South Dakota State; Tracey Ashley, Heidelberg; Tammy Thomas, Arkansas State; Lauri Grills, Southwest Louisiana; Scott Johnstone, Southwest Louisiana.  
Excellent: Mary Coackley, Seton Hall; Brad Hoeschen, St. Cloud; Whitney Sugarman, Seton Hall; Gretchen Wetherill, Youngstown State; Kim Schultz, Winona State; Kelly Russell, Southwest Texas; Chance Pennington, Morehead State (KY); Dawn Boudreaux, Southwest Louisiana; Penni Pier, Moorhead State (MN); Stacey Plum, Moorhead State (MN); Dee Ann Newkirk, Southwest Baptist; Lisa Grills, Southwest Louisiana; Lori Rhone, South Dakota State; Rene Alvarez, Texas A & I; Theresa Jordan, Old Dominion; Tammy Close, Northwest Nazarene; Stacy Schrank, South Dakota State; Viva Hagen-Pond, University of Mary; Michelle Rebolla, West Texas; Rich Knight, Seton Hall; D.J. Nicosia, Monmouth; Melissa John, Concordia.



**ALUMNI PERSUASION** Superior: Susan Waters-Burnett, Bloomsburg. Excellent: Steve McDow, Appalachian State.  
**ALUMNI ORAL INTERPRETATION** Superior: Robert Novelli, Bloomsburg. Excellent: Steven Gwilt, Tennessee Tech.





**POETRY Superior** standing L-R: David Bailey, Youngstown State; Todd Scott, Abilene Christian; Melissa Jahn, Concordia; Whitney Sugarman, Seton Hall; Sheri Patterson, Arkansas Tech; Kim Schultz, Winona State; Melinda Boll, North Dakota State; Rusty Hart, West Texas. Seated center: Mindy Fenske, Moorhead State (MN); Viva Hagen-Pond, University of Mary; Larry Coy, Morehead State (KY); Theresa Jordan, Old Dominion; Byron Norton, Abilene Christian. Seated front: Al Franklin, Youngstown State; Chance Pennington, Morehead State (KY).

**Excellent:** Jaci Greenlee, Sam Houston; Ava Coffee, Arkansas State; Joey Stacks, Arkansas Tech; Lori Moreno, Texas A & I; Traci Trucker, Georgetown; Dee Ann Newkirk, Southwest Baptist; Misty Saul, Marshall; Scott Johnstone, Southwest Louisiana; Todd Fuller, Southwest Baptist; Cathy Jones, Georgetown; Rich Knight, Seton Hall; Dan Higgins, Heidelberg; Stacey Dixon, Morehead State (KY); Tammy Thomas, Arkansas State; Tim Barr, Midland Lutheran; Michelle Bradley, North Dakota State; Catherine Taormina, Monmouth; Steve Yates, Harding; Becky Pfeiffer, Northern State; Norene Walton, Western Washington; Shayna Bloom, Wisconsin-Eau Claire; Gabriella Fry, Arkansas Tech; Kelly Russell, Southwest Texas; Randy Forster, Wisconsin-Oshkosh; Brenda Betzold, Morehead State (KY); Katy Tessman, Moorhead State (MN); Jennifer Lundstrom, Moorhead State (MN); D.L. Richardson, Montevallo; Cassie Helfer, Central Missouri; Tammy Williams, Northwest Missouri; Michelle Rebolla, West Texas; Paula Harder, Winona State.



**NDT Superior** standing L-R: Jeffery Dixon, Laurinda Holm, Concordia.  
**Excellent:** Mansfield.





**L/D Debate Superior** standing L-R: David Crain, Southwest Baptist; Amy Luinstra, Pacific Lutheran; Anne Davie, Seton Hall; Stacey Fewings, Moorhead (MN) State. Excellent: Craig McReary, PLU; Mindy Fenske, Moorhead (MN) State; Ronald Wronko, Monmouth; Kevin Dawson, Arkansas State.



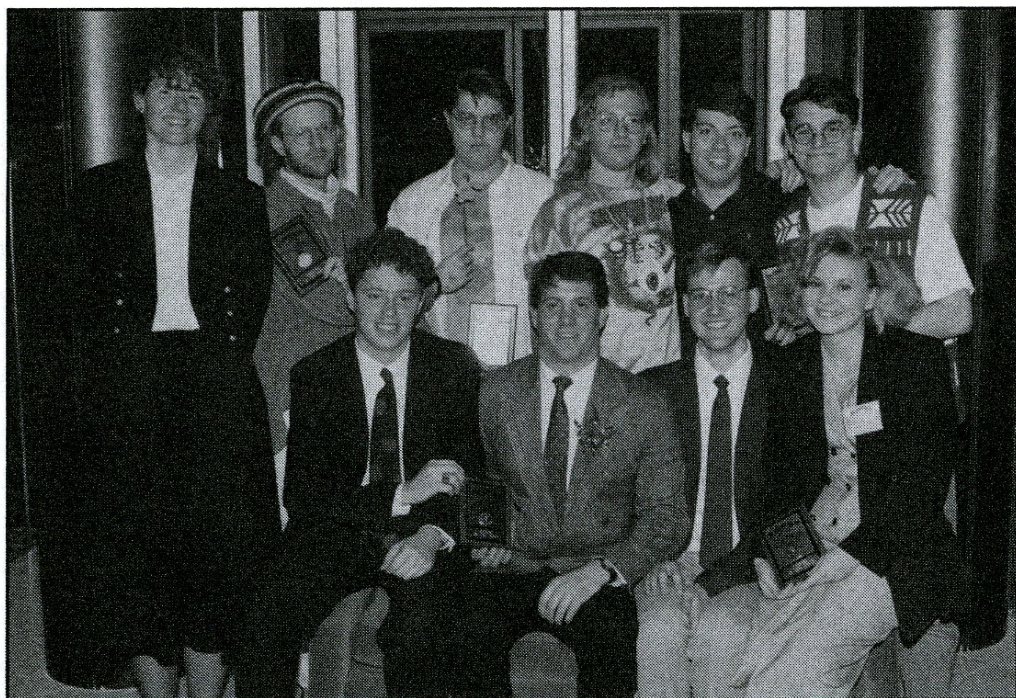
**NOVICE CEDA Superior** standing L-R: Frank Irizarry, Marist College; Pamela Clinton, Marist College; Todd Huhn, Wisconsin-LaCrosse; Tara Mantel, Wisconsin-LaCrosse. Seated L-R: Tony Cook and Thomas Jacobs/Ferris, Paul Eichenberg and Heather Ford/Ferris. Excellent: Arkansas State, Central Missouri, Pacific Lutheran, Sam Houston.





**CEDA Superior Jr.** standing L-R: Deborah Smith/Charley Turner, William Jewell; Terry Howerton/Eric Dichary, Missouri State; Greg Maxim/Mary Ellen Rozecki, Marist. Seated L-R: Annette Vest/Lisa Wade, William Jewell.

Excellent: Bethel, KS; William Jewell, Towson, Southwest Baptist.



**OPEN CEDA Superior** standing L-R: Robin Dziubek/Russel Barber, Carson Brackney/Chad Leonard, Southwestern; Tim Johnson/John Bruning, Gustavus Adolphus. Seated L-R: Thomas Kavan/Anthony Capozzolo, Marist College; Eric Jensen/Shelley Temple, William Jewell.

Excellent: Puget Sound, Towson State, S.W. Missouri, North Dakota State, Wisconsin-LaCrosse.

#### 1991 PKD NATIONALS SCHOOL SWEEPSTAKES

Superior: Southwest Baptist College, Concordia College, West Chester University, Moorhead State University (MN), North Dakota State, Morehead State University (KY), South Dakota State; Cameron University.

Excellent: Central Missouri, Youngstown State, Arkansas State, Georgetown, Southwest Louisiana, Heidelberg, Winona State, Texas A & I, Wilkes, Pacific Lutheran, William Jewell, Wisconsin-Eau Claire, West Texas, Bethel, KS, Fort Hayes State, Central Arkansas, Arkansas Tech., St. Cloud State.



# THE FORENSIC of PI KAPPA DELTA

## LIBRARY RECOMMENDATION FORM

(Copy and forward to your librarian)

Name \_\_\_\_\_

Department \_\_\_\_\_

Institution \_\_\_\_\_

Address \_\_\_\_\_

City \_\_\_\_\_ State \_\_\_\_\_ Zip \_\_\_\_\_

☐ Please enter a subscription to **The Forensic** at the subscriber rate of \$12.50 per year. Unless otherwise specified, your subscription will begin with the current issue.

One Year  
☐ \$12.50

Two Years  
☐ \$25.00

Three Years  
☐ \$30.00

*On subscriptions outside the U.S., add \$9 per year for foreign postage.*

Prices effective through December 31, 1992.  
Make check payable to **The Forensic of Pi Kappa Delta**.

Order from your subscription agent or directly from:

Harold Widvey, Pi Kappa Delta  
Department of Speech Communication  
South Dakota State University  
Brookings, South Dakota 57007-1197

Other Pi Kappa Delta publications available through Secretary-Treasurer Widvey's office include:

\_\_\_\_\_ copies of **The Forensic Index - 1915-1990**. edited by Clarence Steadman @\$5.

\_\_\_\_\_ copies of **The Proceedings of the 1989 PKD Developmental Conference**. ed. by Dr. Robert S. Littlefield @ \$6.

\_\_\_\_\_ copies of **The History of Pi Kappa Delta**. compiled by Dr. Larry Norton @ \$25.