

# THE FORENSIC

OF PI KAPPA DELTA

SERIES 13

JANUARY, 1928

NUMBER 3

## CONTESTS OF THE SEVENTH NATIONAL CONVENTION

National contests for both men and women in three different lines of forensics will be featured at the Seventh National Convention of  $\Pi K \Delta$ , Berea, Westerville, and Tiffin, Ohio, April 2-6.

### Debate.

Teams of two, each speaker limited to ten and five minutes, debating both sides of the question, with the privilege of changing the personnel of the team. An institution may enter two teams. Two defeats eliminate. After the first round, the sides will be determined by the committee in charge to require teams to debate an equal number of times on each side of the question.

### Oratory.

Original orations of not more than 1,500 words. The three ranking highest from each preliminary advance to the next.

### Extemporaneous Speaking.

General topic:

Men, The Influence of the Press.

Women, The American Home.

One hour before the contest each speaker shall draw a sub-topic on which he must speak not less than eight nor more than ten minutes. The three highest from each preliminary advance.

### Important Notice to Contestants.

Each contestant must file his entrance with and pay an entrance fee of one dollar to the National Secretary by March 15. Each orator must file a type-written copy of his oration with the National Secretary by March 15. All contestants must be **bona fide** undergraduate students of the institution they represent. They must be members of the chapter of  $\Pi K \Delta$  in their college or university, or must have applied for membership.

(For complete rules governing the different contests see page 115.)

### Railroad Rates

Convention rates of a fare and a half for-the-round trip are being secured. Each delegate must present a certificate showing the purchase of a railroad ticket or pay a registration fee of one dollar.



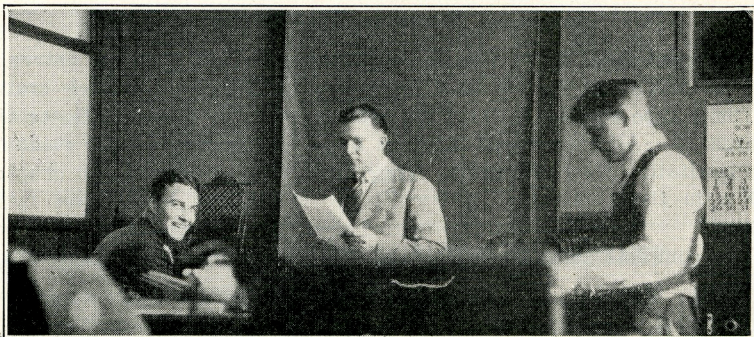
## LIVE TOPICS FOR EXTEMPORE CONTESTS

A new plan of selecting topics for the National Extempore Speaking Contest was tried out this year. Each chapter was asked to send in its suggestions. The subjects thus received were tabulated and presented to a special committee whose vote was to determine the final selection. This committee consisted of the members of the National Council and the governors of the various provinces, nineteen in all.

The first call resulted in two splendid lists of topics, 35 for the men and 25 for the women. The members of the committee ranked all of these subjects on both of these lists. Totaling these rankings gives the following results:

<i>Total of Ranks</i>	<i>Subjects</i>	<i>Place</i>
<i>Men</i>		
85	The influence of the press.....	1st
108	Intercollegiate athletics .....	2nd
113	World peace .....	3rd
117	Farm relief .....	4th
124	Prohibition .....	5th
<i>Women</i>		
42	The American home .....	1st
51	Women in politics .....	2nd
87	The press and society.....	3rd
90	Higher education and women .....	4th
101	Women in industry .....	5th

The topics for the National Extempore Speaking Contests are "The Influence of the press," for men; and "The American home," for women.



Members of  $\Pi K \Delta$  taking charge of Baldwin-Wallace's printing room in getting out letters to  $\Pi K \Delta$  chapters



# RULES FOR ALL CONVENTION CONTESTS

## Oratory

These rules shall govern both the Men's Oratorical Contest and the Women's Oratorical Contest.

1. **CONTESTANTS.** Each Pi Kappa Delta Chapter may enter an orator in each contest, who shall be an active member of the chapter he or she represents.

2. **ENTRANCE FEE.** Each chapter shall pay an entrance fee of one dollar for each orator entered.

3. **ORATIONS.** Orations shall not exceed 1500 words in length, and shall not contain more than 150 words of quotation. All quotations shall be indicated by the proper marks. Each contestant shall send a typewritten copy of his oration to the National Secretary together with the entrance fee of one dollar, not later than March 15, 1928. The National Secretary shall examine each oration to determine its eligibility under this rule.

4. **PRELIMINARY CONTESTS.** Preliminary contests shall be held simultaneously, the number of such contests being determined by the number of contestants entered, it being provided that not more than nine speakers shall appear on one program. The National Council shall determine the arrangement of schools in the preliminary contests.

5. **FINAL CONTESTS.** The number of speakers appearing in the final contests shall be determined by the National Council in accordance with the number of preliminary contests held.

6. **TIME OF CONTESTS.** The time for holding each contest shall be determined by the National Council and shall be announced in the printed program of the convention.

7. **JUDGES.** Each contest shall be decided by three or more disinterested judges to be chosen by the National Council.

8. **METHOD OF JUDGING.** Judges shall mark on general excellency, including thought, composition and delivery, giving each orator a grade between the per cents of 75 and 100. No judge shall give any two orators the same grade.

Members of the National Council shall tabulate the ballots and determine the results. The markings of each judge shall be ranked 1, 2, 3, etc. Any orator ranked first by a majority of the judges shall be awarded first place. If no orator is thus ranked first, all the rankings of each orator shall be totaled and the orator having the lowest sum of ranks shall be awarded first and the orator having the next lowest sum of ranks shall be awarded second and the orator having the next lowest sum or ranks shall be awarded third place. In case of a tie, the rankings shall be made again by omitting the contestants not concerned in the tie, and the tie thus broken.

As a part of the final extempore speaking contest, each speaker, as the contest proceeds, shall prepare a question to ask of each opponent speaker on the topic discussed by that opponent speaker. In turn, each speaker shall answer a question on his or her topic asked by some opponent. Each speaker shall ask and answer but one question. A member of the National



Council shall, before the time of the contest, determine the order of asking questions and giving answers. This order is to be kept secret from the contestants. Each speaker shall be limited to three minutes in which to answer the question.

9. **PRIZES.** The winner of first place in each final contest shall be awarded a gold medal; the winner of second place shall be awarded a silver medal, and the winner of the third place shall be awarded a bronze medal. The college represented by the winner of first place shall be awarded a silver trophy cup.

All arrangements for the contests not covered by the above rules shall be in the hands of the National Council.

## Extemporaneous Speaking

These rules shall govern both the Men's Extempore Speaking Contest and the Women's Extempore Speaking Contest.

1. **CONTESTANTS.** Each ΠΚΔ Chapter may enter a contestant in each contest, who shall be an active member of the chapter he or she represents.

2. **ENTRANCE FEE.** Each chapter shall pay an entrance fee of one dollar for each contestant entered. Notice of intention to enter the contests, together with the fees, shall be sent to the National Secretary not later than March 15, 1928.

3. **SUBJECTS.** At least two months before the convention the National Council shall announce a general subject for each contest.

4. **SUB-TOPICS.** A disinterested party chosen by the National Council shall divide each general subject into ten sub-topics. These sub-topics shall be kept sealed until the time for the contests. One hour before the beginning of each contest the contestants shall by lot select sub-topics. Each speaker shall confine his discussion to the sub-topic chosen.

5. **PRELIMINARY CONTESTS.** Preliminary contests shall be held simultaneously, the number of such contests being determined by the number of contestants entered, it being provided that not more than eight speakers shall appear on one program. The National Council shall determine the arrangement of schools in the preliminary contests. No contestant shall be permitted to hear the other speakers in any preliminary contest.

6. **FINAL CONTESTS.** The number of speakers in the final contests shall be determined by the National Council in accordance with the number of preliminary contests held. No contestant shall be permitted to speak in the final contest upon the same sub-topic upon which he spoke in the preliminary contest.

7. **TIME OF CONTESTS.** The time for holding each contest shall be determined by the National Council and shall be announced in the printed program of the Convention.

8. **LENGTH OF SPEECHES.** Speeches shall not be less than eight minutes nor more than ten minutes in length. Each speaker shall be given a warning by the time-keeper at the expiration of eight minutes.

9. **NOTES AND QUOTED MATTER.** No speaker shall be permitted



to take upon the platform more than one hundred words of notes. No speaker shall use more than two hundred words of quoted matter. Quotations may be either read or memorized.

11. JUDGES. Each contest shall be decided by three or more disinterested judges chosen by the National Council and in accordance with the rules for judging prescribed for the National Oratorical Contests.

12. PRIZES. Prizes similar to the ones given in the National Oratorical Contests shall be awarded to the winners of the first three places in each Extempore Speaking Contest.

All arrangements for the contests not covered by the above rules shall be in the hands of the National Council.

## Debate

These rules shall govern both the Men's Debating Tournament and the Women's Debating Tournament.

1. CONTESTANTS. Each  $\Pi K \Delta$  chapter may enter one or two teams in each contest. The members of these teams shall be active members of the chapter they represent.

2. ENTRANCE FEE. Each chapter shall pay an entrance fee of one dollar for each team entered. Notice of intention to enter the contest, together with the fees, shall be sent to the National Secretary not later than March 15, 1928.

3. QUESTION. The official  $\Pi K \Delta$  question shall be used in all of the debates.

4. SPEECHES. Each debater shall have two speeches, one of ten minutes and one of five. The affirmative shall speak first in the first speeches, and the negative first in the second speeches.

5. ELIMINATION. The debates shall be conducted upon the elimination plan. A team must be defeated twice to be eliminated. The arrangement of the debates in all the contests shall be in charge of the National Council.

6. SIDES. Each team must debate on both sides of the question. After the first series the National Council shall attempt, as far as possible, to schedule each team in each succeeding debate for the side of the question opposite to the one it last debated.

7. PERSONNEL. The personnel of a team may be changed during the tournament, but such changes must be announced before a team is assigned its side in the next debate.

8. JUDGES. Each debate shall be decided by a competent judge or judges selected by the National Council.

9. SCOUTING. The tournament will be open. Debaters are not prohibited from attending other debates during the tournament.

10. PRIZES. Prizes similar to the ones given in the National Oratorical Contests shall be awarded to the members of the winning teams of the first three places in each debating tournament.

All arrangements for the tournaments not governed by the above rules shall be in the hands of the National Council.





# SOME OF THE DELEGATES TO NATIONAL CONVENTION

BONNIE JONES, Extempore  
*William Jewell*

SURVILLA STEVENS, Extempore  
 President, *South Dakota Epsilon*

ALDEN RUSSELL, Debater  
*William Jewell*      Sioux Falls

ARTHUR WHITE, Debater  
*University of California at Los Angeles*

Albert Howard  
 ALBERT HOWARD, Extempore



# MORE DELEGATES REPORTED EVERY DAY

To date seventy-two chapters have reported their intentions of sending 329 delegates, an average of better than 4.5 delegates per chapter. We still expect every chapter to be represented. Send in your report at once so that plans can be made.

<i>Chapter</i>	<i>No. of Delegates</i>
<b>California</b>	
Redlands, California Alpha .....	8
University of California at Los Angeles, California Epsilon	5
<b>Colorado</b>	
Colorado Agricultural College, Colorado Alpha.....	4
Colorado Teachers, Colorado Beta.....	3
Western State, Colorado Gamma .....	4
<b>Idaho</b>	
College of Idaho Alpha .....	1
<b>Illinois</b>	
Eureka, Illinois Beta .....	2
Bradley, Illinois Delta .....	3
Monmouth, Illinois Zeta .....	3
Normal University, Illinois Eta.....	10
McKendree, Illinois Theta .....	4
North Central, Illinois Iota .....	12
<b>Iowa</b>	
Iowa Wesleyan, Iowa Alpha.....	2
Central, Iowa Beta .....	4
Des Moines, Iowa Gamma .....	3
Morningside, Iowa Delta .....	7
Coe, Iowa Theta .....	4
Western Union, Iowa Iota .....	5
Buena Vista, Iowa Kappa .....	4
Dubuque, Iowa Lambda .....	5
<b>Kansas</b>	
Ottawa, Kansas Alpha .....	3
Southwestern, Kansas Delta .....	8
Emporia Teachers, Kansas Iota .....	6
Kansas Wesleyan, Kansas Eta .....	3
Pittsburgh Teachers, Kansas Theta .....	10
College of Emporia, Kansas Iota.....	6
Sterling, Kansas Lambda .....	10
Bethany, Kansas Mu .....	5
<b>Kentucky</b>	
Centre, Kentucky Beta .....	1
Wesleyan, Kentucky Gamma .....	1
Transylvania, Kentucky Delta .....	1
<b>Louisiana</b>	
Louisiana, Louisiana Alpha .....	5
Centenary, Louisiana Beta .....	1
<b>Michigan</b>	
Hope, Michigan Gamma .....	12
Michigan State, Michigan Delta .....	10



<b>Minnesota</b>	
St. Olaf, Minnesota Beta .....	1
Gustavus Adolphus, Minnesota Gamma .....	5
Hamline, Minnesota Delta .....	3
St. Thomas, Minnesota Epsilon .....	5
<b>Missouri</b>	
Westminster, Missouri Alpha .....	3
William Jewell, Missouri Delta .....	7
Missouri Wesleyan, Missouri Epsilon .....	4
Central State Teachers, Missouri Eta .....	1
<b>Montana</b>	
Montana State, Montana Beta .....	3
<b>Nebraska</b>	
Doane .....	1
Hastings, Nebraska Delta .....	4
Grand Island, Nebraska Epsilon .....	2
<b>North Carolina</b>	
North Carolina State, North Carolina Alpha.....	3
<b>Ohio</b>	
Baldwin-Wallace, Ohio Alpha .....	10
Heidelberg, Ohio Beta .....	10
Hiram, Ohio Gamma .....	1
Otterbein, Ohio Epsilon .....	10
Marietta, Ohio Zeta .....	3
<b>Oklahoma</b>	
Oklahoma Baptists, Oklahoma Gamma .....	2
Oklahoma City, Oklahoma Epsilon .....	5
<b>Oregon</b>	
Linfield, Oregon Alpha .....	2
<b>Pennsylvania</b>	
Grove City, Pennsylvania Alpha .....	3
<b>South Carolina</b>	
Wofford, South Carolina Alpha .....	11
Newberry, South Carolina Gamma .....	1
<b>South Dakota</b>	
South Dakota Wesleyan, South Dakota Alpha.....	5
Yankton, South Dakota Gamma .....	4
South Dakota State, South Dakota Delta.....	4
Sioux Falls, South Dakota Epsilon .....	5
Northern Teachers, South Dakota Zeta.....	5
Augustana, South Dakota Eta .....	3
<b>Tennessee</b>	
Maryville, Tennessee Alpha .....	4
Tusculum, Tennessee Beta .....	2
<b>Texas</b>	
Howard Payne, Texas Delta .....	3
Baylor, Texas Epsilon .....	4
Texas Christian, Texas Zeta .....	2
North Texas Teachers, Texas Eta .....	3
<b>Wisconsin</b>	
Ripon, Wisconsin Alpha .....	5
Carroll, Wisconsin Beta .....	3
<b>Total</b> .....	329



## ATTRACTIVE SIDE TRIPS FOR DELEGATES



ELEGATES who attend the Seventh National Convention of PKA will have opportunity to combine some interesting side trips with attendance on the convention.

Otterbein, where part of the men will assemble, is located at Westerville, fifteen miles north of Columbus. It is also near Marion, where the tomb of President Harding has recently been completed.

Berea, the home of Baldwin-Wallace, is just ten miles out of Cleveland, which has some fine art institutions and theatres for the benefit of those who can visit them. Cleveland is the fifth city of the country in size. It has manufacturing and commercial establishments which will be of interest to many of the delegates.

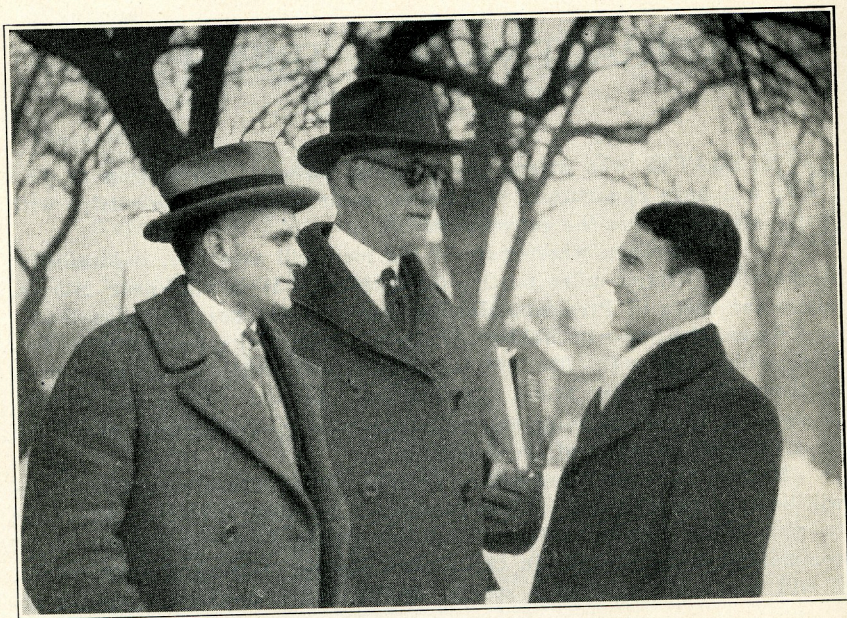
Most of the convention will be in Tiffin. The attractions of the town will be open to delegates. Those interested in college dramatics will want to visit Tiffin Scenic Studios. This firm is the largest manufacturer of commercial stage scenery in the United States. During the convention it will have on exhibition a special display of its products. Special ar-



TIFFIN PREPARES FOR THE CONVENTION

President Miller of Heidelberg, Professor Hopkins, debate coach, Mayor Dretzler, and Secretary Biggs of the Chamber of Commerce in the mayor's offices





## BEREA GETS ON THE JOB

The mayor of Berea, President A. B. Storms of Baldwin-Wallace, and A. Wesley Roehm, president of Ohio Alpha and student member of the National Council, planning for the Convention

rangements are being concluded for a trip through the plant by the delegates, at which time they may watch the actual construction and painting of theatre equipment.

Tiffin is also the home of The United States Glass company which produces 25,000 pieces daily of the nationally known Tiffin Ware. The National Machinery Company manufactures specialized machinery. The Standard Sanitary Manufacturing Company is one of the nation's outstanding potteries engaged in manufacturing sanitary equipment. The National Home of the Junior Order of United American Mechanics is an institution which will attract the attention of those who visit Tiffin. It is one of the largest and finest orphanages in the nation, providing a home for twelve hundred children.

From Tiffin many points of interest may be reached. Greensprings, twelve miles out, are noted for their sulphur springs, natural scenery, and sanitariums. Toledo, fifty miles away, holds many attractions. Automobile fans will probably want to arrange a visit to Detroit, four hours by train. Pittsburgh and Washington are within easy reach by direct train connections, but it will, of course, require more time and money to visit them.



# HERE IS YOUR FARE TO THE CONVENTION

**I**N THE table below is printed the railroad fare for each chapter to the convention. If 250 present certificates showing they have purchased tickets for this convention, the railroads will grant a special convention rate of fare and a half, which will make the fare home just half what is shown here. We had over 250 at the last convention and feel very sure that we shall have enough at this to obtain the special fare. In fact, we are asking the chapters to figure on it.

While it has been necessary to divide the convention between Berea, Westerville, and Tiffin for the preliminary contests, it has not been possible to have these points designated in the convention rates. All tickets for the special rates must be to Tiffin and to secure the reduced fare returning, the delegate must purchase his ticket over the same route he came. While these conditions may not prove most convenient, they are the only ones under which the Interstate Commerce Commission allows the railroads to grant these reduced fares. Those who have to go to Westerville or Berea should purchase their tickets to Tiffin and buy transportation to these other points from Tiffin. All chapters are requested to cooperate in securing this reduced fare. Even if a chapter cannot profit itself by the lower rate,



PLANNING FOR THE DELEGATES

John Cowley and Arthur Knippenkra of Ohio Beta with the B. & O. Agent at Tiffin



it can help the other chapters get it and this will mean a savings of hundreds of dollars to them.

It is interesting to note that only eleven chapters have a one-way rate of over \$50. The average rate for all is \$29.69. The reduced fare will save as much as \$45.65 for each delegate from Washington Alpha. The average for all chapters will be \$14.84. If we save this amount for the minimum of 250 delegates only, the total saving will be \$3,710. Let us all help.

<i>Fare from</i>	<i>To Tiffin, Ohio</i>
<b>Arkansas</b>	
Alpha and Beta—Henderson Brown and Ouchita Colleges, Arkadelphia .....	\$31.02
<b>California</b>	
Alpha—University of Redlands, Redlands.....	84.66
Beta and Epsilon—Occidental College and University of California, Southern Branch, Los Angeles.....	86.35
Gamma—California Institute of Technology, Pasadena.....	86.35
Delta—College of the Pacific, Stockton.....	86.35
<b>Colorado</b>	
Alpha—Colorado Agricultural College, Fort Collins.....	46.74
Beta—Colorado Teachers' College, Greeley.....	45.78
Gamma—Western State College, Gunnison.....	54.09
<b>Connecticut</b>	
Alpha—Connecticut Agricultural College, Storrs.....	25.74
<b>Idaho</b>	
Alpha—College of Idaho, Caldwell .....	74.39
<b>Illinois</b>	
Alpha and Eta—Illinois Wesleyan University, Bloomington, and Illinois State Normal University, Normal.....	12.41
Beta—Eureka College, Eureka .....	13.73
Gamma—Carthage College, Carthage .....	17.71
Delta—Bradely Polytechnic Institute, Peoria.....	13.31
Zeta—Monmouth College, Monmouth .....	15.62
Theta—M'Kendree College, Lebanon .....	16.24
Iota—Northwestern, Naperville .....	10.16
Kappa—Lombard, Galesburg .....	15.01
<b>Indiana</b>	
Alpha—Franklin College, Franklin .....	8.20
<b>Iowa</b>	
Alpha—Iowa Wesleyan University, Mt. Pleasant.....	17.53
Beta—Central College, Pella .....	20.54
Gamma and Mu—Des Moines and Drake Universities, Des Moines .....	22.04
Delta—Morningside College, Sioux City .....	27.49
Epsilon—Simpson College, Indianola .....	22.40
Zeta—Parsons College, Fairfield .....	18.56
Eta—Upper Iowa University, Fayette.....	19.26
Theta—Coe College, Cedar Rapids .....	17.33
Iota—Western Union College, Le Mars.....	27.14
Kappa—Buena Vista College, Storm Lake.....	24.55
Lambda—Dubuque University, Dubuque .....	15.68
<b>Kansas</b>	
Alpha—Ottawa University, Ottawa .....	27.34
Beta—Washburn College, Topeka .....	27.63
Gamma—Kansas State Agricultural College, Manhattan....	29.49

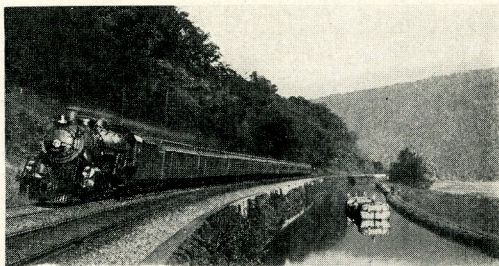


Delta—Southwestern College, Winfield .....	34.10
Epsilon—Fairmount College, Wichita .....	32.91
Zeta and Iota—Kansas State Teachers College and College of Emporia, Emporia .....	29.30
Eta—Kansas Wesleyan University, Salina .....	31.92
Theta—Kansas State Teachers' College, Pittsburg.....	29.89
Kappa—Baker University, Baldwin City .....	23.83
Lambda—Sterling College, Sterling .....	33.79
Mu—Bethany College, Lindsborg .....	32.68
Nu—Kansas State Teachers' College, Hayes.....	35.64
<b>Kentucky</b>	
Alpha—Georgetown College, Georgetown .....	9.05
Beta—Center College, Danville .....	10.72
Gamma—Kentucky Wesleyan College, Winchester .....	10.04
Delta—Transylvania, Lexington .....	9.47
<b>Louisiana</b>	
Alpha—Louisiana College, Pineville .....	38.19
Beta—Centenary College, Shreveport .....	36.07
<b>Maine</b>	
Alpha—Colby College, Waterville .....	23.29
<b>Michigan</b>	
Alpha—Kalamazoo College, Kalamazoo .....	6.51
Beta—Olivet College, Olivet .....	7.68
Gamma—Hope College, Holland .....	8.39
Delta—Michigan Agricultural College, East Lansing.....	5.40
Epsilon—Michigan State Normal College, Ypsilanti.....	4.58
Zeta—College of the City of Detroit, Detroit .....	3.57
<b>Minnesota</b>	
Alpha, Beta, Delta, and Epsilon—Macalester, St. Olaf, Ham- line, and St. Thomas Colleges, St. Paul and Northfield..	23.42
Gamma—Gustavus Adolphus College, St. Peter .....	24.47
<b>Missouri</b>	
Alpha—Westminster College, Fulton .....	21.33
Beta—Park College, Parkville .....	26.72
Gamma—Central College, Fayette .....	22.47
Delta—William Jewell College, Liberty .....	26.92
Epsilon—Missouri Wesleyan College, Cameron .....	26.72
Zeta—Culver-Stockton College, Canton .....	21.87
<b>Montana</b>	
Alpha—Montana Wesleyan College, Helena .....	62.73
Beta—Montana State College, Bozeman .....	60.38
<b>Nebraska</b>	
Alpha—Nebraska Wesleyan University, University Place....	28.88
Beta—Cotner College, Bethany (Lincoln).....	29.06
Gamma—Doane College, Crete .....	29.78
Delta—Hastings College, Hastings .....	32.53
Epsilon—Grand Island College, Grand Island.....	32.28
Zeta—Kearney State Normal, Kearney .....	33.79
<b>North Carolina</b>	
Alpha—State College, Raleigh .....	28.48
Beta—Wake Forest College, Wake Forest .....	28.48
<b>North Dakota</b>	
Alpha—Jamestown College, Jamestown .....	35.45
<b>Ohio</b>	
Alpha—Baldwin-Wallace College, Berea .....	3.63
Gamma—Hiram College, Hiram .....	5.78
Delta—University of Akron, Akron .....	3.58



Epsilon—Otterbein College, Westerville .....	3.61
Zeta—Marietta College, Marietta .....	7.31
<b>Oklahoma</b>	
Alpha—Oklahoma Agricultural and Mechanic Arts College, Stillwater .....	34.46
Beta—University of Tulsa, Tulsa .....	31.53
Gamma—Oklahoma Baptist University, Shawnee .....	35.77
Delta—Northwest State Teachers' College, Alva.....	36.66
Epsilon—Oklahoma City College, Oklahoma City.....	35.77
Zeta—Oklahoma College for Women, Chickasha .....	37.00
<b>Oregon</b>	
Alpha—Linfield College, McMinnville .....	87.84
<b>Pennsylvania</b>	
Alpha—Grove City College, Grove City.....	7.47
<b>South Carolina</b>	
Alpha—Wofford College, Spartanburg .....	24.24
Beta—Presbyterian College of South Carolina, Clinton.....	25.99
Gamma—Newberry College, Newberry .....	26.80
<b>South Dakota</b>	
Alpha—Dakota Wesleyan College, Mitchell .....	30.57
Beta—Huron College, Huron .....	32.34
Gamma—Yankton College, Yankton .....	28.97
Delta—South Dakota State College, Brookings.....	29.75
Epsilon—Sioux Falls College, Sioux Falls .....	28.30
Zeta—Northern State Teachers' College, Aberdeen.....	33.10
Eta—Augustana College, Sioux Falls .....	28.30
<b>Tennessee</b>	
Alpha—Maryville College, Maryville .....	17.65
Beta—Tusculum College, Greenville .....	21.85
<b>Texas</b>	
Alpha—Southwestern University, Georgetown .....	45.97
Beta—Trinity University, Waxachie .....	41.39
Gamma—East Texas State Normal College, Commerce.....	38.30
Delta—Howard-Payne College, Brownwood .....	45.81
Epsilon—Baylor College for Women, Belton .....	44.87
Zeta—Texas Christian University, Fort Worth.....	40.71
Eta—North Texas State Normal College, Denton.....	42.01
<b>Washington</b>	
Alpha—College of Puget Sound, Tacoma .....	91.31
<b>Wisconsin</b>	
Alpha—Ripon College, Ripon .....	15.21
Beta—Carroll College, Waukesha .....	12.68

*Courtesy Union Pacific System*



The Capitol Limited of the Baltimore and Ohio from Chicago to Washington passes thru Tiffin



# KANSAS MU BUYS A FORD THRU VAUDEVILLE

**B**ETHANY NITE was innovated in 1926 with a program of eight vaudeville acts. This year the program was considerably enlarged so that it was necessary to divide the program and present two nights instead of one. Both were very successful and pleasing to the audience. Bethany Nite is a competitive affair. The program is made up of various acts limited to twenty-five minutes in length. These acts, familiarly called "stunts," are original skits or sketches presented by the various organizations upon the campus.

In announcing Bethany Nite, the date, usually about one month later than the initial announcement, and the conditions of the contest are set forth. All organizations and groups interested are invited to participate in the program. A prize of ten dollars is offered for the winning act and one of five dollars for the act winning second place. It is likely that these prizes will be increased in the future in order to promote a greater interest in the affair. The winning stunts are selected by a ballot vote of the audience.

In order to stimulate the entrants to greater efforts it is required that the program be presented before the Bethany Nite committee, which acts in the capacity of examiner and censor, one week before the date of public presentation. This committee decides whether or not the various acts are worthy of presentation. Any found to be below standard are barred from participation. This has the effect of stimulating the cast to greater efforts toward perfection and eliminates the danger of having a "washout" upon the program that would detract from the satisfaction of the audience. It also eliminates the last minute rush of preparation and allows one week for the directors to polish up their act for final presentation.

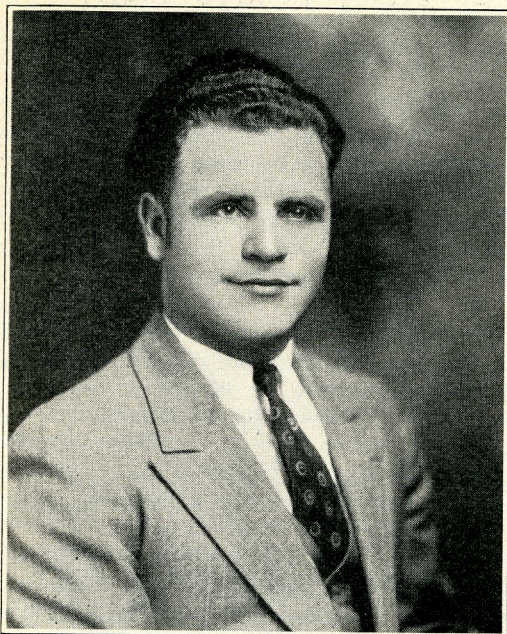
In arranging the program places are drawn for by lot, which drawing is final unless two decidedly similar acts draw places



MARIE FRENCH

Who will represent Bethany at the Convention





CECIL LAMB, President  
Kansas Mu, Bethany College

department receives 25 per cent, and from the individual enterprises of Pi Kappa Delta. In addition to Bethany Nite, the Kansas Mu Chapter promotes a refreshment stand during the annual Messiah Festival week, the receipts from which approximate \$150. So for this year this chapter has paid off a \$200 debt left over from the forensic program of last year and has purchased a Ford Sedan which will be used to carry the delegates to the national convention at Tiffin. The car will be used in the regular forensic program, thus greatly reducing the usual transportation costs and enlarging the convention fund.

That is the story of our Bethany Nite which has proved very successful with us and which I think would prove just as successful if tried by other chapters.

immediately together. In that case the order of appearance is changed so as to secure the greatest possible effect of variety and to do away with the succession of similar acts that would tend to tire the audience.

Bethany Nite has proved immensely popular both with the student body and towns people. The net receipts from the two programs totaled \$300 despite the fact that the attendance was cut almost in half by unfavorable weather that practically nullified the non-student attendance.

The forensic budget is financed by the collection of student activity fees of which the forensic

---

Donald Sham, who holds the Pi Kappa Delta coaching certificate, has returned to the University of Redlands for graduate work in Education preparatory for qualifying for high school work in California. He will assist Professor E. R. Nichols and will have charge of the Freshman and Sophomore squads in their debates with the Junior colleges and in the Freshman league of the Southern California colleges.