

# THE FORENSIC

PEITHO KALE DIKAIA

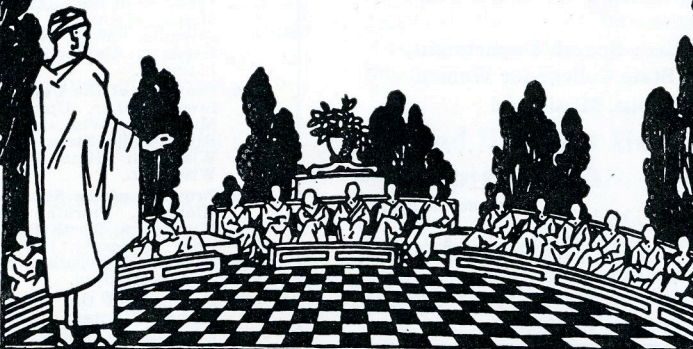
M A Y 1 9 5 5

Series 40

Number 4

## IN THIS ISSUE

Proceedings of the Nineteenth National Convention of Pi Kappa Delta.....	99
A Letter from Our President.....	104
A Message from Your New President.....	105
Convention Activities .....	103
Convention Registration .....	108
Superior Sweepstakes Award.....	114
Men's Debate, Extemporaneous Speaking and Oratory .....	116
Women's Debate, Extemporaneous Speaking and Oratory .....	124
Discussion .....	130
Student Discussion .....	133
Ridin' the Provinces.....	134





# DIRECTORY

OF

## PI KAPPA DELTA

**National President**—John Randolph, Westminster College, Fulton, Missouri.

**National Vice-President**—Theodore F. Nelson, St. Olaf College, Northfield, Minnesota.

**National Secretary-Treasurer**—D. J. Nabors, East Central College, Ada, Oklahoma.

**National Council Members**—Ethel Kaump, McKendree College, Lebanon, Illinois; Roy D. Murphy, Southwestern Louisiana Institute, Lafayette, Louisiana; Larry E. Norton, Bradley University, Peoria, Illinois.

**Immediate Past-President**—Roy D. Mahaffey, Linfield College, McMinnville, Oregon.

**Editor of THE FORENSIC**—Harvey Cromwell, Mississippi State College for Women, Columbus, Mississippi.

**Associate Editor of THE FORENSIC**—Emil R. Pfister, Central Michigan College of Education, Mount Pleasant, Michigan.

## THE PROVINCES AND GOVERNORS

### 1. Province of the Plains

Kansas, Nebraska, Colorado. Charles Masten, Kansas State Teachers College, Emporia, Kansas.

### 2. Province of Missouri

Missouri, Iowa-Central, Simpson, Coe, Drake, William Penn, Cunera Van Emerik, Central College, Pella, Iowa.

### 3. Province of Illinois

Illinois, Wisconsin — Ripon, Carroll, Whitewater State, Ralph A. Micken, Illinois State Normal University, Normal, Illinois.

### 4. Province of the Pacific

Arizona, California. Eugene R. Moulton, University of Redlands, Redlands, California.

### 5. Province of the Sioux

Iowa—Morningside, Westmar, North Dakota, South Dakota, Clara Chilson, Augustana College, Sioux Falls, South Dakota.

### 6. Province of the Lower Mississippi

Arkansas, Louisiana, Oklahoma, Texas, Cedric Crink, Southwestern State College, Weatherford, Oklahoma.

### 7. Province of the Lakes

Maine, Michigan, Indiana, Ohio, Pennsylvania, West Virginia. Wofford G. Gardner, University of Maine, Orono, Maine.

### 8. Province of the Upper Mississippi

Iowa—Luther, Upper Iowa, Dubuque—Minnesota, Wisconsin—Eau Claire State, River Falls State. Marion E. Hawkins, Wisconsin State College, River Falls, Wisconsin.

### 9. Province of the Southeast

Alabama, Florida, Georgia, Kentucky, Mississippi, North Carolina, South Carolina, Tennessee. Harvey Cromwell, Mississippi State College for Women, Columbus, Mississippi.

### 10. Province of the Northwest

Idaho, Montana, Oregon, Washington. Paul Rosser, Seattle Pacific College, Seattle, Washington.

# FORENSIC

OF PI KAPPA DELTA

**Editorial Office: Speech Department,  
Mississippi State College for Women  
Columbus, Mississippi**

HARVEY CROMWELL ..... *Editor*

EMIL R. PFISTER ..... *Associate Editor*

D. J. NABORS ..... *Business Manager*

Published four times a year in October, January, March, and May at 136 4th Ave. N., Nashville, Tenn. Editorial office at Mississippi State College for Women, Columbus, Miss. Entered as second class matter, October, 1952. at the post office at Nashville, Tennessee, under act of August 24, 1912.



All members of Pi Kappa Delta should be interested in the minutes of the business sessions held at the national convention. While the national officers are the official administrators, it is the action of the delegates at the national convention who elect the administrators and establish the policies that govern Pi Kappa Delta. You should read carefully the changes made in proceedings and the proposals for a new order of Curricular Speech which were presented and discussed. If you have opinions regarding this proposed order, send them to your national officers or prepare a statement for inclusion in the FORENSIC. Don't fail to read this important section.

# *Proceedings of Nineteenth National Convention of Pi Kappa Delta*

---

**The University of Redlands, Redlands, California**

**April 4-8, 1955**

## **Minutes of the First Business Meeting**

**T**HE FIRST BUSINESS meeting was called to order by President Randolph at 8:35 A.M. April 4, 1955. On roll call of chapters delegates from 112 chapters were reported present, with an attendance of 524. (Late registrations and visitors increased the total attendance to 554 with 116 chapters represented). An address of welcome was given by President George H. Armacost of Redlands University. E. R. Nichols, founder of Pi Kappa Delta, was introduced and addressed the convention. Nichols proposed that Fred Fagg, who attended the first national convention of Pi Kappa Delta, and is now President of the University of Southern California be invited to attend the convention banquet as guest. (This request was complied with and President Fagg extended his regrets because of previous commitments.)

Announcements were made by the following:

Roy D. Mahaffey—Convention Chairman  
L. E. Norton—Contest Chairman  
Harvey Cromwell—Publicity Chairman  
Roy D. Murphy—Chairman, Charter and Standards Committee  
Sherod J. Collins—Chairman, Nominations Committee

Ethel Kaump—Chairman, Committee of Constitutional Revision

Edward L. Betz—Chairman, Committee on Convention Invitations

Sue Ellis—Chairman, Social Activities

Charters were presented to seven new and one reactivated chapters as follows:

Chico State College, Chico, California; Upland College, Upland, California; Los Angeles State College, Los Angeles, California; Whitman College, Walla Walla, Washington; Southern State College, Magnolia, Arkansas; Southeastern State College, Hammond, Louisiana; Black Hills State Teachers College, Spearfish, South Dakota; and McKendree College, Lebanon, Illinois.

President Randolph explained that the first nine rows would be reserved for voting delegates at the other business meetings with standards provided for state delegations. Adjournment.

## **Second Business Meeting, Tuesday, April 5, 1955, 10:30 A.M.**

Ballots were distributed on roll call for the election of president and vice-president. Chairman Collins presented the four eligible candidates, Theodore F. Nelson, St. Olaf College; L. E. Norton, Bradley University; Roy D. Murphy, Southwest Louisiana Institute; and Ethel Kaump, McKendree College.



The report of the Secretary-treasurer was given. D. J. Nabors, national secretary-treasurer, reported that 1140 new members had been added to Pi Kappa Delta since his term began August 1, 1953, that with 400 new members for the current year to date, memberships are running ahead of 1953-54. He announced that the increase in membership fees from five to seven dollars has made it possible to pay all current expenses without drawing on the reserves. Major items of expense for the preceding year were: publication of the FORENSIC—\$2,347.34; printing—\$636.23; secretarial help and supplies—\$1,698.49; moving the office of secretary from Greeley, Colorado to Ada, Oklahoma—\$237.58; \$200.00 was contributed to the Westfall Memorial Scholarship Fund, and \$2,223.37 spent for keys. A reserve of \$3,000.00 is invested in Colorado State College Bonds, and \$1,000.00 in U.S. Government bonds that matured in 1955 has been held in reserve in the checking account until after the national convention and will be reinvested if not needed to defray a part of the convention expense.

The secretary reported that key orders are now being shipped directly from the Balfour Company in order to save time on the delivery of keys. A price list on all keys has been made available to simplify key orders. As a public relations move, a personal letter was written to each president of all Pi Kappa Delta chapters with a report on the status of the chapter. Over 100 replies were received. 3000 calendar cards were distributed through the local chapters, speech conventions and tournaments. Fewer than ten per cent of the chapters took advantage of the one free membership allowed each year. Southwestern State College, Oklahoma, has set an example for others to follow by making the new governor of Oklahoma, Raymond S. Gary, an honorary member. Attention was called to vol. I of the Grand Catalogue of Pi Kappa Delta which contains the names of the first ten thousand members which was available for inspection at the registration desk. Complete membership records were sent to all chapters making requests for such a list. In closing the secretary said:

"Pi Kappa Delta is a federation that operates on three levels, the local, the provincial, and the national. At all three levels we need a sound program that we can be proud of, that we can justify on the basis of recent trends in the philosophy of education and the teaching of speech. Having developed such a program we should not put our candle

under a bushel, but in its rightful place to continue to light the way for others in speech education."

Motion to accept report of secretary-treasurer carried.

The name of Emmett T. Long, George Pepperdine College was submitted as editor of the FORENSIC. Motion to elect. Carried.

Collins reporting for the nomination committee announced the election of Theodore F. Nelson, St. Olaf as president, and L. E. Norton, Bradley University, as vice-president.

Ethel Kaump reporting for the committee on constitutional revision moved that the Article V, Division C, section 2; be amended by inserting the words "these students not to be contestants at the Convention," after the words "one man and one woman" in line 6. An amendment was proposed by Ford that the words, "in not more than one event" be added. After lengthy discussion the proposed amendment was referred back to the committee for further consideration.

It was recommended that the constitution be revised in Article V, Division C, Section 2, by inserting the words, "The editor shall be an ex-officio, non-voting member of the National Council who shall be present at all Council meetings. Motion carried with one dissenting vote.

It was moved to revise the constitution. Article V, Division C, Section 5, subsection b; by striking subsection b and inserting: (b) Public relations and Research. The President shall appoint a permanent Public Relations and Research Committee made up of three members, one to be designated as chairman. Each member to be rotated on a two year basis. The duty of this committee shall be to advance the interests of Pi Kappa Delta by furnishing information about the society and its goals and purposes to newspapers, educational groups, and the general public, to encourage and evaluate projects and to gather and compile data in the field of speech," and to strike "research committee" from (c) page 22. Motion carried.

It was proposed to amend the constitution Article III Section 1; by inserting the words "carrying a minimum of twelve semester hours of regular college subjects with at least a B-grade point average in all subjects," after the words "in good standing" in line 4. An amendment was offered that the "upper quartile" be substituted for "B-grade point average," lost for want of a second. After discussion, motion was made to table the proposed



amendment until the next business meeting. Passed. Adjournment.

## **Minutes of the Third Business Meeting, April 8, 1955, 2:30 P.M.**

On the roll call ballots were distributed for the election of three members of the National Council. Chairman Collins explained the procedure to be followed in the election, and presented the names of the following candidates submitted by the nominations committee; Harvey Cromwell, Mississippi State College for Women, Charles T. Battin, College of Puget Sound, Ethel Kaump, McKendree College, Jess Gern, Western State College, Colorado, and Roy D. Murphy, Southwest Louisiana Institute. Motion to accept the report of the committee was made and passed. The name of Dr. Eugene Moulton, Redlands University, was added on the call for nominations from the floor.

The report from the Committee on Convention Invitations was presented by Chairman Edward S. Betz. He stated that invitations for the 1957 Convention had been received from South Dakota State College, Brookings, South Dakota, and Oklahoma A&M College, Stillwater, Oklahoma. Governor Cedric L. Crink, Province of the Lower Mississippi, announced that the Province had endorsed the invitation of Oklahoma A&M and pledged financial support if the invitation were accepted. No action was taken and the matter of selection of the next convention site was left in the hands of the National Council.

The report of the Charter and Standards Committee was given by Roy D. Murphy, Chairman. The committee recommended that the charters of the following chapters be revoked: Arkansas State College, Jonesboro; William Penn, Iowa; Kansas Wesleyan University; West Virginia Wesleyan; Seton Hill, Pennsylvania; Sam Houston State Teachers, Texas; and John B. Stetson, Florida.

The committee recommended that the following be placed on probation for a period of two years: Ouachita College, Arkansas; DePaul University, Illinois; Franklin College, Indiana; Westmar College, Iowa; Kentucky Wesleyan; Millsaps College, Mississippi; Tulsa University, Oklahoma; University of South Carolina; Carson-Newman, Tennessee; Southwestern State Teachers, Texas; Stephen F. Austin, Texas; Texas A&I; Baker University, Kansas; Drake University, Iowa; Carroll College, Wisconsin.

The committee recommended that the following be continued on probation for two years: University of Georgia, Athens.

The committee recommended that the following be removed from probationary status: U.C.L.A., Trinity University, University of Dubuque, Whitworth University.

Motion to adopt the report of the committee was made, passed.

The report of the Resolutions Committee was presented by Chairman, Cedric L. Crink:

## **Report of the Resolutions Committee**

And now may it be resolved that:

The Nineteenth Biennial National Convention of Pi Kappa Delta, assembled at Redlands University, Redlands, California, takes this opportunity to express its appreciation to all organizations and individuals who have contributed to the success of the convention and the pleasure of its delegates.

Pi Kappa Delta expresses its thanks to President, George Armacost, the administrative officers, faculty, and students of Redlands University for providing the exceptionally fine facilities placed at our disposal.

The local chapter exemplified typical Pi Kappa Delta spirit in performing the many detailed tasks of planning and carrying out the responsibility of the convention.

And now our particular appreciation goes to our host, Dr. Eugene R. Moulton. The friendly hospitality and efficient operation of the tournament may be attributed in large measure to his pleasing and efficient manner of adjudication.

To the chapters of the Province of the Pacific and the Province of the Northwest the National Convention of Pi Kappa Delta wishes to express its thanks for their cooperation and financial assistance.

The convention particularly thanks Radio Station KCAL and the Public Relations Department of Redlands University who have so ably provided publicity for our activities. Also thanks to the Redlands newspaper, *The Redlands Facts*, and to the *Los Angeles Examiner* for their assistance.

On behalf of the well traveled delegations from across the plains who have received "inducements" we express deep appreciation for housing provided for this group. The entire convention is grateful to those friends of



the college and faculty who so generously opened their homes for those individuals who could not be placed in the resident halls.

Our thanks and appreciation are given to those members of the faculty of Redlands University and other friends of Pi Kappa Delta who so generously gave of their time and their energy to the judging of some of our contests.

Our thanks to the University of Redlands which provided effective liaison with local firms within the city. To Sliger's Music Company for the television set in the convention headquarters, to the Real Gold Company for the orange juice, and to the Pacific Mutual Life Insurance Company for the notebooks, our thanks.

To the American Broadcasting Company, and the Columbia Broadcasting System, and Western Trail Stages our special thanks go for the splendid tours made possible to the convention. Also our special thanks to those University of Redlands students who so graciously answered the many questions and provided for these tours.

Our deep appreciation is extended to all our national officers and convention committees who have done their duty well. No man can do more.

WHEREAS, the catering service in the Commons here at Redlands has far exceed our most cherished hopes and expectations; and

WHEREAS, the dining service has been courteous and efficient; and

WHEREAS, the menus have been varied, balanced, and abundant:

*Be it resolved;* that a very special vote of grateful thanks be extended to Miss Margaret MacKenzie, Manager of the University Commons for her service through this past week.

WHEREAS, the planned operation of a convention the magnitude of Pi Kappa Delta would result in confusion and disorder were it not for the adequate performances of many duties; and

WHEREAS, we are indebted to those students of Redlands University who generously relinquished their rooms for our comfort and to those students who assumed the task of attending to the multitude of specific and anonymous tasks, we extend our thanks.

WHEREAS, the members of the maintenance staff and others associated with Redland University did forego their Easter vacation and extended their regular duties in order to serve this convention, therefore

*Be it Resolved,* That this convention acknowledge such benefits and favors and ex-

Four years ago at the Stillwater Convention, we accepted the obligation of serving as your editors with some trepidation. At that time we pledged our full efforts toward the fulfillment of your vote of confidence for a FORENSIC that would be representative of Pi Kappa Delta.

Our term in office expires with this issue. We have tried to meet our pledge. Where we may have failed, we ask your understanding. Where we may have succeeded, we thank you for your assistance in supplying material and extending encouraging letters and comments. We sincerely hope we were able to make the FORENSIC a more vibrant voice of Pi Kappa Delta for "persuasion, beautiful and just" in our democratic way of life.

Mr. Emmett T. Long, Pepperdine College, Los Angeles, California, is your new editor. All future correspondence regarding the FORENSIC should be addressed to him.

HARVEY CROMWELL, Editor

EMIL R. PFISTER, Associate Editor

licitly cite those individuals as our particular benefactors, and

*Be it further Resolved,* That the National Secretary be instructed to communicate appropriate letters of our thanks.

Respectfully submitted,  
CEDRIC L. CRINK, *Southwestern State College, Chairman*

FRED FRANCIS, *University of Redlands*  
PAUL ROSSER, *Seattle Pacific College*  
C. L. NYSTROM, *Wheaton College*

Motion was made that the report of the committee be approved. Passed.

The report of the Committee on Convention Evaluation was presented by Chairman Ira G. Morrison as follows:



## Report of the Committee on Convention Evaluation

The Committee on Convention Evaluation deems it proper to report to this convention assembled, on only those subject matters of organizational policies that may be beneficial in planning the 1957 convention.

The Committee has made extensive inquiries among student and faculty delegates and has received many and varied suggestions. Those suggestions of a purely local or temporary nature will be reported at a later date to the National Council for use in its deliberations.

The Committee wishes to make the following observations:

1. That uniform numerical ratings on judges' ballots be designed to eliminate the possibility of confusion in the tabulation of individual ratings in all contests;
2. That the time limit in oratory contests be recinded and the word limit be restored;
3. That the members of the Judging Committee be required to assemble for active duty several days prior to the opening of the Convention;
4. That it shall be a stipulated duty of the Committee on Convention Arrangements and Program to provide specific, designated rooms and time of meetings for all Convention Committees on the first and last day of the Convention;
5. That plans be laid to secure at least two nationally known authorities to address the Convention on speech subjects pertinent to our contest endeavors;
6. That one general session, preferably preceeding the first Business Session, be devoted to various aspects of Parliamentary Law;
7. And lastly that the Council do something about the contest in Public Discussion.

It is the observation of this committee that more unfavorable remarks have been made on the contest of Public Discussion than on all other matters of Convention interest combined. For that reason the Committee recommends that the National Council be instructed to do either one of two things:

1. Appoint a special sub-committee to poll the membership on the subject of Public Discussion as a contest event, to make a thorough survey and study of Public Discussion as a contest event, to report their findings to the National Council in time to make competent plans for the next National Convention;

2. Or that the National Council strike Public Discussion from the program of contest events.

I. G. MORRISON, *Chairman, Phillips University*

RALPH A. MICKEN, *Illinois State Normal University*

GLENN CAPP, *Baylor University*  
ADA PICAIZEN, *San Diego State*

Motion to accept the report was passed.

Sherod Collins announced the election of the following to the National Council: Charles T. Battin, Harvey Cromwell, Roy D. Murphy.

Ethel Kaump presented the report of the Committee on Constitutional Revision. An amendment was proposed to remove the inconsistency between the terms, "the constitution may be amended by  $\frac{2}{3}$  of the delegates present," and, "each chapter shall have one vote in the affairs of the Provincial Organization and the National Organization." It was moved that the term "Vote" be substituted for the term "delegates" in the constitution. Motion carried.

It was proposed that the term "supplemented with public speaking proficiency demonstrated in audience situations" be added as a requirement for the new order of curricular speech under consideration. It was moved that the assembly organize itself into a Committee of the Whole for consideration of the basic principles involved in the issue of the new order. The motion passed, and Forrest H. Rose, parliamentarian was appointed to preside as the Chairman of the Committee of the Whole. President-Elect, Theodore F. Nelson, explained the thinking of the National Council in recommending that the order of curricular speech be adopted. It was proposed that debate should be retained as a separate order with four orders being established namely; debate, intercollegiate speech, curricular speech and instruction. An amendment was offered that consideration of the revision of the orders be carried over until the next National Convention. Motion lost. Motion was made that the Committee of the Whole rise and report. Carried. Motion that the report of the Committee be adopted was made. A substitute motion was proposed by Keiser, Lenoir Rhyne, that further study of the revision of the orders be made by a committee composed of the National Council and three others to be appointed by the President. Motion to amend was offered that the following be added, "three members of the committee to be students who will be in school in 1957." Amendment carried. Vote on the substitute motion carried. Motion to adjourn.

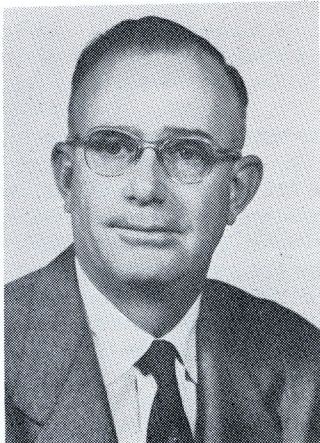




**JOHN RANDOLPH**  
Immediate Past President  
Westminster College

# A FINAL LETTER FROM OUR PRESIDENT

**D. J. NABORS**  
Secretary-Treasurer  
Oklahoma East Central State  
College



This is the last page I shall be writing as your president; so it is time to cast accounts as well as to look to the future. Freshest in my mind is our national convention at Redlands, from which I arrived home exactly one week ago. All in all, it was a fine convention. Sure, there were snags and difficulties, debates and hassels; but we tackled our problems with a good spirit. Most of the immediate problems were overcome on the scene; and from our discussions on matters of long-range policy will come ultimately, I am convinced, a stronger Pi Kappa Delta. The give and take of true democratic procedure was exemplified perfectly at our business sessions.

Everyone who attended contributed to the success of the convention, naturally; but it seems to me that three groups of people deserve special credit. We owe a big vote of thanks, first, to our hosts at the University of Redlands. Dr. Gene Moulton, the administration, and the students of the Redlands forensic squad worked hard to set things up in advance and equally hard to iron out the difficulties which inevitably arise when a convention as large as ours gets under way. Second, I would like to pay a tribute to those largely unsung heroes of behind-the-lines activity, the convention and contest committees. The real work at Redlands was carried on by them; they took all the complaints, and got very little of the credit. Members of many of the committees carried a full judging load in addition to their other work. Finally, credit should go to the national officers of Pi Kappa Delta. Editors Cromwell and Pfister plugged nobly for the convention in the FORENSIC. The members of the Council worked for two years on plans for the event. Nor should I forget the student representatives on the Council, who worked on committees and assisted the Council materially in gauging public opinion on various issues.

At one time during a business session some rather harsh things were said about the Council. I hope they were said in the heat of debate, only. Your Council is no self-perpetuating hierarchy. At any convention the delegates may replace fifty percent of its permanent members, and thus institute completely new policies. Our Constitution provides for the continual infusion of new blood into the directing body of your fraternity. Its members serve without pay other than the defraying of necessary expenses; their sole aim is a better Pi Kappa Delta.

Now for a brief look at the future. May I solicit for your new president, Theodore Nelson, the same cooperation which it has been my good fortune to receive from everyone in the fraternity. The Council which you have elected for the next biennium is an unusually strong one; give it your full support. And send Editor Emmett Long articles and full accounts of your chapter activities; after all, it's your FORENSIC as much as his.



I welcome the invitation of the editor of the **FORENSIC** to make this statement of policy and to present a brief autobiographical sketch of my life. I am grateful for the honor of serving as your National President and for this expression of confidence on the part of the many forensic directors and students who have known me as a fellow-traveler in the tournament circuits of the country. My purpose will be to improve the forensic activities of our fraternity. As directors of competitive speech training, let us reevaluate constantly the philosophy and practices of our program. We must keep our eyes on the kind of products our disciplines produce. When our speakers become performers rather than communicators, seekers of decisions rather than of truth, egotistical and contentious rather than altruistic and cooperative, and self-assertive rather than socially sensitive, we had better analyze our approach to the training of our students. Such results stem not from the inherent nature of our activities, but from misplaced emphases.

My hope also is that we may secure the careful consideration of our chapters of the proposal to give recognition to those students on our campuses who become effective speakers via other avenues than that of intercollegiate contests. Our fellowship need not be only with debaters and orators. Our real kinship is with all who recognize the importance of "persuasion, beautiful and just." We need not be strangers to those who travel a different road to the same destination.

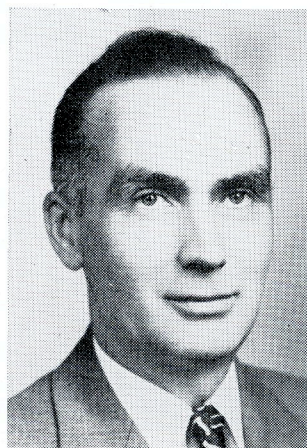
My autobiography begins with the black, loam soil of southern Minnesota, where I spent my early boyhood. During undergraduate days, my membership in Pi Kappa Delta resulted from representing Gustavus Adolphus College, Minnesota Gamma, St. Peter, Minnesota, in the state oratorical contest. My teaching career began as a high school instructor of chemistry and physics. Summer session graduate study at the University of Minnesota led to a masters degree in education and English. During these early years I directed forensic activities in the public high schools at Mendota and Pekin, Illinois. My speakers and debaters participated regularly in the high school league's contests and in the tournaments sponsored by the National Forensic League. After summer sessions and a year's residence at Iowa City, I received a doctor of philosophy degree in speech from the State University of Iowa. My first college teaching assignment was at Allegheny College in Meadville, Pennsylvania, where forensics occupied much of my extra-curricular time. In the fall of 1946 I moved to St. Olaf College in Northfield, Minnesota, as chairman of the department of speech and director of forensics. It was my good fortune to marry the girl I met and wooed during undergraduate days. We have two sons, one of whom participated in the debate, oratory, and discussion events at the Redlands Convention.



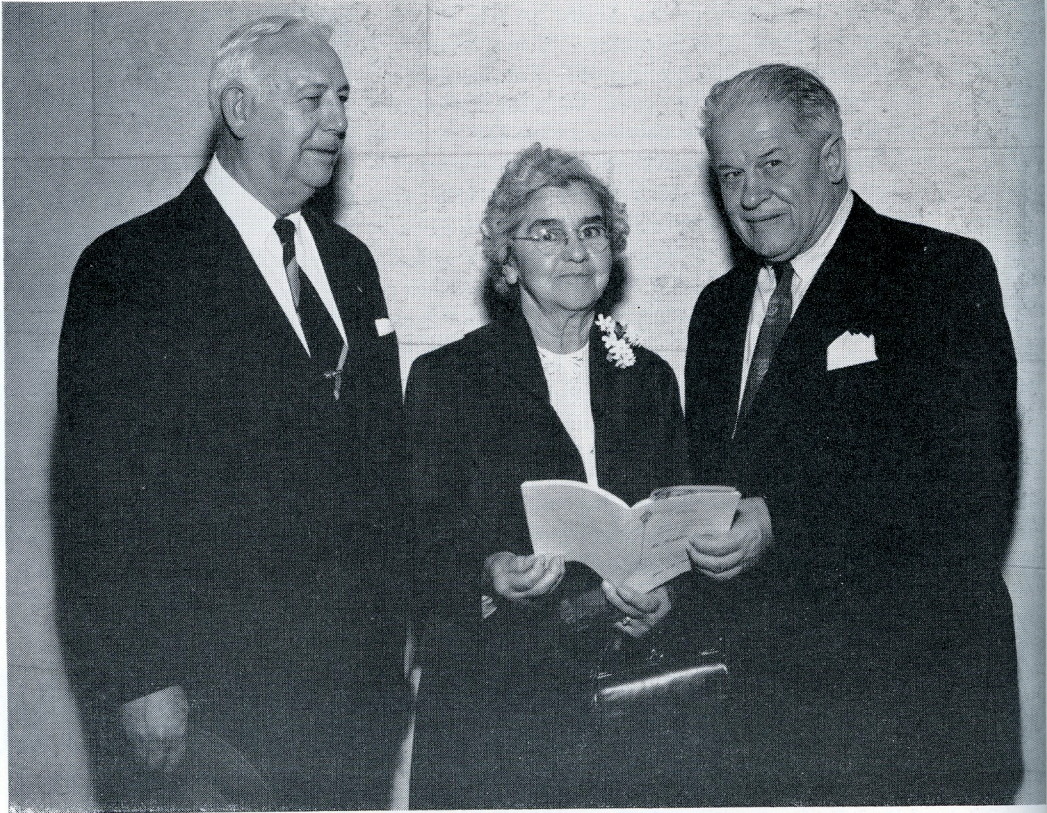
**THEODORE F. NELSON**  
President  
St. Olaf College

## A MESSAGE FROM YOUR NEW PRESIDENT

**LARRY E. NORTON**  
Vice-President  
Bradley University







Did we really help begin this? Left to right, Dr. E. R. Nichols, 1st National President of Pi Kappa Delta, Mrs. E. R. Nichols, and Dr. Charles T. Battin holder of Pi Kappa Delta certificates No. 2.

**EMMETT LONG**  
Editor of The Forensic  
Pepperdine College



Every two years brings new people to the Directory of Pi Kappa Delta. The delegates at the Redlands Convention elected two new members for the National Council and a new editor of the FORENSIC. New council members are Charles T. Battin of the College of Puget Sound and Harvey Cromwell of Mississippi State College for Women. Dr. Battin, holder of PKD certificate No. 2, one of the founders of PKD, and charter member of the first chapter of Pi Kappa Delta, established at Ottawa University in 1912. Dr. Cromwell is a charter member of the Oklahoma East Central Chapter established in 1930, present Governor of the Province of the Southeast, and retiring editor of the FORENSIC. Emmett T. Long of Pepperdine College is the new editor of the FORENSIC. He is a graduate of Pepperdine College, past Governor of the Province of the Pacific, and served as chairman of Judging at the Redlands Convention.





**ROY D. MURPHY**  
Council Member  
Southeastern Louisiana Institute



**HARVEY CROMWELL**  
Council Member  
Mississippi State College for  
Women



**CHARLES T. BATTIN**  
Council Member  
College of Puget Sound

# Convention Activities

The 19th Biennial National Convention gets underway as National President John Randolph asks National Secretary-Treasurer D. J. Nabors to call the roll of chapters.





## ARIZONA

### Arizona State College, Beta

William H. Stites, Coach  
Marvin Strait  
Sandy Gadiant  
Ruth Ammon  
Klonda Bowers

## ARKANSAS

### Southern State, Epsilon

O. F. Prosper, Coach

## CALIFORNIA

### University of Redlands, Alpha

Eugene R. Moulton, Coach  
Duncan Sprague  
Fred Francis  
Scott Dye  
George Armstrong  
Sue Ellis  
Carol Knight  
Jackie Banning  
Ron Tabor  
Greg Harman  
Dick Riggins  
Ed Miller  
Charles Lee

### California Tech., Gamma

Dr. Lester L. McCrery, Coach  
Reuben Moulton  
Mike Blucher  
Don Meyers  
John Young  
Ray Orback  
William B. Lindley  
Gene Cordes  
Andy Perga

### College of the Pacific, Delta

Edward S. Betz, Coach  
John Varner  
Bud Sullivan  
Mel Nickerson  
Jane Curry  
Susan Van der Laan

### University of California, Epsilon

Wesley Lewis, Coach  
James Murray, Coach  
Paul Rosenthal  
Howard Miller  
Joe Silverman  
Lillian Tomick  
Catherine Gage

### Pepperdine College, Zeta

Emmett T. Long, Coach  
Jerry Boime  
Mel Pic'l  
Bill Cline  
Pat Pafford

# Convention Registration

Lois Gould  
Sara Bingham  
Alice Baker  
Maple Jackson  
Martha Smith

### San Diego State, Eta

John Ackley, Coach  
Ada Picaizen  
M. Anthony McPeak  
Harry Steinmetz  
Mary Ward

### Pasadena College, Theta

Nancy Shingler  
Bob Foster  
Nancy Hamilton

### Chico State College, Iota

Janis Bostwick

### Upland California, Kappa

Robert J. Carlson, Coach  
John Raser  
Paul Boyer  
Paul Hass  
Gladys Weaver  
Shirley Book

### Los Angeles State College, Lambda

Malcolm Sillars, Coach  
Ross Gearhart  
Phillip Kelly  
Harry McKown  
Pauline Eckhart  
Fred Scott

## COLORADO

### Colorado A&M, Alpha

Roy C. Nelson, Coach  
Neil Thomas  
Warren Seamons  
Shirley Smyth  
Lela Clerkin  
Ronald Meyer

### Colorado State College of Ed., Beta

Roy L. DeBoer, Coach  
Bob Frykholm  
Phil Tompkins  
Ralph Webb  
Lee Stunkel

### Western State, Gamma

Jess W. Gern, Coach  
Jim Richards  
Bill Elliott  
Jim Parkinson  
Tina Ragatz

## IDAHO

### College of Idaho, Alpha

Geo. Knight-Smith

### Idaho State College, Gamma

Carl L. Isaacson, Coach  
Charles Bilyeu  
Felix Neals  
Larry Elison  
Dree Knack  
Gladys Wilson

## ILLINOIS

### Illinois Wesleyan, Alpha

Marie J. Robinson, Coach  
Richard Brush  
James Hall  
Richard Hull  
Darrell Lacock

### Bradley University, Delta

L. E. Norton, Coach  
Roger Nebergall  
Robert Carr  
George Smerk  
Gary Best

### Monmouth, Zeta

Robert Kully, Coach  
Sally Smith  
Aleece Reifinger

### Illinois State Normal U., Eta

R. A. Micken, Coach  
Roger Hufford  
Neal Clausson  
Ed Carpenter  
Peg Davenport  
Pat Hufford  
Faye Felchner  
Stan Rives

### McKendree College, Theta

Dr. Ethel Kaump, Coach  
Douglas Johnson  
Russell Henss  
Tom Gensler  
Judy Wier  
Lucille Pritchard

### North Central, Iota

Glenn Reddick, Coach  
James Thomas  
Wilmert Wolf Jr.  
Lyndon Sawvell

### Wheaton College, Mu

C. L. Nystrom, Coach  
Robert Scheidt  
Paul Riemann  
Dean Miller



**Western Illinois State, Nu**  
Harold F. Schory, Coach

**Augustana College, Xi**  
Martin J. Holcomb, Coach  
John Erickson  
Stuart Lefstein  
Nancy Olson  
Janice Swanson

**Northern Illinois State, Pi**  
Paul Crawford, Coach  
James Wilkins  
James Skipper  
Barbara Ackerman  
Doris Olson

**Principia College, Rho**  
Clayton D. Ford, Coach  
Richard Pl Ruby  
Edwin V. Petz  
Leon Coit

**Eastern Illinois State, Sigma**  
Dr. Earnest G. Bormann,  
Coach  
John Jones

Robert Newton  
Leo Ruley  
Pem Berta Martin

**Millikin University, Tau**  
Jack E. Robb

**Southern Illinois University,  
Upsilon**

Stanley Rives  
Sue Alice Martin  
Dorothy Beck

**Greenville College, Chi**

W. Brock Brentlinger, Coach  
Ron Werner  
Gary Cronkhite

## IOWA

**Central College, Beta**

Cunera Van Emmerik, Coach  
Len De Baer  
Walter Henrickson  
Carolyn Coleman  
Mary Buwalda

**Simpson College, Epsilon**

Don Barnhart, Coach  
John Clary  
Larry Banks  
Adrianne Ames  
Roberta Lamb  
Gwen Groomes

**Buena Vista College, Kappa**

Mrs. Gladys Kuehl, Coach  
Bill Fahan  
John Cross  
Jay Sheop  
Vicki Morton  
Carol Hammer

**University of Dubuque, Lambda**

Richard Nav Iten  
Richard Stricker

**Luther College, Xi**

Kenneth L. Berger, Coach  
Nels Lillejord  
Keith Knudson  
Doris Johnston  
Leona Lee



Province Governor's Luncheon. Left to right, Miss Marion E. Hawkins, Province of the Upper Mississippi; Theodore F. Nelson, National Vice-President; Cedric Crink, Province of the Lower Mississippi; John Randolph, National President; Paul Rosser, Province of the Northwest; Charles Masten, Province of the Plains; Eugene R. Moulton, Province of the Pacific;

Miss Clara Chilson, Province of the Sioux; Emil R. Pfister, Associate Editor of the FORENSIC; Ralph A. Micken, Province of Illinois; Miss Cunera Van Emmerik, Province of Missouri; Harvey Cromwell, Province of the Southeast, Editor of the FORENSIC; Mrs. D. J. Nabors; D. J. Nabors, National Secretary-Treasurer.





Beards (past-national presidents) attending the convention. Seated, left to right, Glenn R. Capp, Baylor University; W. H. Veatch, State College of Washington; Sherod Collins, Northeast Missouri State Teachers. Standing, Edward S. Betz, College of the Pacific; Roy D. Mahaffey, Linfield College; John Randolph, Westminster College; Forrest H. Rose, Southeast Missouri State College. Not included in the picture but present at the convention, E. R. Nichols, Redlands University, Martin J. Holcomb, Augustana College, Illinois.

## KANSAS

### Ottawa University, Alpha

Martha Larson, Coach  
John Dodgen  
Vernon Barnes  
Jack Bremer  
John Ross

### Washburn University, Beta

Charles J. Logas, Coach  
Clif Kruse  
D. J. Stoops  
Virginia Monroe  
Judy Greer

### Southwestern College, Delta

Edna C. Sorber, Coach  
Eugene Lowry  
Charles Fulcher  
Jo Ann Robieson  
Joyce Chappell

### Kansas State, Zeta

Howard Holladay, Coach  
Jim Trent  
Gary Poorman

### Kansas State College, Theta

Harold Polston, Coach  
Robertson Strawn  
Kenneth Mosier  
Guy Sutherland  
Sally Allyn  
Colleen Recob

### Sterling, Lambda

Clayton C. Campell, Coach  
Jack Coates  
David Garlick  
Mary Ann Evans  
Betty Orr

### Ft. Hayes State, Nu

Geneva Herndon, Coach  
Marylou Saylor  
Mary Thompson

### Bethel College, Xi

Wm. T. Wilkoff, Coach  
Horton Fleming  
Dale Mueller  
Marian Kaufman  
Kay Ewert  
Carol Gering

## McPherson College, Omicron

Max McAuley, Coach  
Donald Ullom  
Donald Faules  
Irene Shull  
Mary Wise

## KENTUCKY

### Centre College, Beta

W. T. Hill, Coach  
Dick Parks  
Fred Drougla  
Joe Purdom  
Carole Cargal  
Virginia Ragland

## LOUISIANA

### Centenary College, Beta

Joseph Gifford, Coach  
Norman Miller  
George Nash Jr.

### Southwestern La. Institute, Gamma

Roy D. Murphy, Coach  
Karl Cavanaugh  
Nathan Stansbury  
Elizabeth Roberts  
Beatrice Yazbeck

### Louisiana Polytechnic Institute, Delta

Paul J. Pennington, Coach  
Jack Bennett  
Morris Sneed

### Northwestern Louisiana, Epsilon

Donald L. Graham, Coach  
Weldon Walker  
Phil Wilcox  
Richard Smith

### Southeastern La., Zeta

Howard Nichols  
Hammond

## MICHIGAN

### Michigan State College, Delta

Fred Alexander, Coach  
Richard Kralick  
William Martin  
June Turner  
Lynn Bergman  
Beverly Dean

### University of Detroit

Henry C. Schneidewind

### Central Michigan, Theta

Emil R. Pfister, Coach  
Cy Pombier  
Bill Franch  
Marlo Davison  
Laura Pizzala