

# Proceedings of the Seventeenth National Convention of Pi Kappa Delta

Oklahoma A and M College,  
Stillwater, Oklahoma

March 25-29, 1951

## FIRST BUSINESS SESSION

The first business session of the convention was called to order by President Sherod J. Collins on March 25, following the opening Convocation of the Convention.

One hundred ten chapters answered the first roll call.

President Collins requested that anyone interested in the Editorship of the *Forensic* see him within the next day or two.

Announcements were made by the following committee chairmen:

Theodore Nelson, Judges  
Marilyn Short, Oklahoma Night  
R. D. Mahaffey, Charter Committee  
E. O. Wood, Publicity  
D. J. Nabors, Convention  
John Randolph, Contests

President Collins introduced Immediate Past president, Edward S. Betz, Councilman Paul Koester, Theodor LeVander, Chairman of the Committee on Constitutional Revision, and Martin J. Holcomb, Chairman of the Committee on Nominations.

President Collins presented the chairman of the Committee on Local Arrangements, Harry H. Anderson, who outlined some of the important matters affecting the conduct of the convention.

President Collins announced that because of illness Past-president Forrest H. Rose would be unable to attend the convention and that a telegram of greeting had been sent to him from Pi Kappa Delta.

The meeting adjourned at 10:07 p.m.

## SECOND BUSINESS SESSION

The second business session was called to order in the College Auditorium by President Sherod J. Collins at 10:15 a.m., Tuesday, March 27.

Since the minutes of the Sixteenth Convention were printed in the *Forensic* for May 1949, they were not read to the Seventeenth Convention.

The President called attention to the Province Meetings scheduled for 4:00 p.m. Tuesday.

The President announced the appointment of Clayton D. Ford, The Principia, as Convention Parliamentarian.

The Committee on Nominations distributed ballots for the election of President and Vice-president. Ballots were deposited on roll call which

showed 127 chapters present and voting.

Roy D. Mahaffey, Chairman of the Charter Committee, presented the first report of that committee as follows:

1. The Charter Committee, with the approval of the National Council and a majority of the chapters in the Province of Illinois, recommends that a charter be granted to Greenville College, Greenville, Illinois.

It was moved that the report be accepted and the Charter granted. Carried.

Miss Cunera van Emmerik, Chairman of the Committee on Invitations reported on the progress of the committee especially with reference to the invitation from Columbus, Ohio. She requested that other cities or colleges see the committee at once if interested in entertaining the convention in 1953. After considerable discussion it was moved that the secretary poll all chapters in October 1951 to get a reaction to the possibility of holding a convention on the west coast. Carried.

President Collins called for the report of the secretary - treasurer.

REPORT OF SECRETARY - TREASURER TO THE SEVENTEENTH NATIONAL PI KAPPA DELTA CONVENTION, STILLWATER, OKLA.

MARCH 27, 1951

Although they are not a part of the regular report I would like to begin with the statistics of the present convention attendance. There are a total of 640 delegates and visitors registered. These delegates represent 135 chapters in 32 states, the largest chapter representation at any of the seventeen national conventions. At Peoria in 1949 there were 644 delegates and visitors representing 130 chapters in 30 states.

Now to a statement about your treasury. The fiscal year will end June 30 and the annual report will be found in the October *Forensic* but at this time I want to give you a general statement about our financial condition. We still have three thousand dollars in Colorado State College dormitory revenue bonds which pay 4% interest and will mature in 1956. We own five United States Defense Bonds, Series F with



a face value of \$2500.00, maturing in 1954. These bonds have been carried in the annual report at a value of \$1850.00, the amount paid for them. We hope that it will not be necessary to cash them before they mature. The current cash operating balance has not been as encouraging these past two years but it is nothing to be too worried about. In July 1948 our bank balance was approximately \$4400, in 1949 \$3300, and in 1950, \$2200, a decrease of about \$11000 each year. The first drop was the result of a convention deficit in 1949, which for several reasons was an expensive meeting. The second drop resulted from a decrease of 230 in members initiated this past year over the two previous years. Last Tuesday evening the total for this year was 508. To maintain the normal expenditures of the society we need to initiate approximately a thousand members each year.

At the present time we have 183 chapters on our list. Seven have been added since the 1949 convention: Phillips University at Enid, Oklahoma; Marshall College, Huntington, West Virginia; Northeastern State College, Tahlequah, Oklahoma; Eau Claire State Teachers College, Eau Claire, Wisconsin; St. Mary's College, Winona, Minnesota; Appalachian State Teachers College, Boone, North Carolina; and Southwestern State College, Weatherford, Oklahoma. This adds three chapters to the Province of the Lower Mississippi and two to the Upper Mississippi. It is likely that four or five colleges will lose their charters at this convention and that several more will go on the suspension list. The secretary's office, the charter committee, and the province governors have all been using their efforts to prevent the loss of charters and to activate weak charters. We are convinced that the biggest single factor vitality is a faculty director of forensics who is interested in Pi Kappa Delta and an active forensic program.

To repeat a comment made many times in the report of the secretary, the most important problem in relations with chapters is to get and maintain an accurate mailing list. Usually by May or June we have it; then the process starts over again. If your college did not receive Forensics, ballots on debate questions, ballots on new chapters, communications from national officers, housing information and entry blanks for this convention, etc. if probably is because we did not have the name of a responsible faculty sponsor on your campus. If any of you sponsors change positions by next October I would appreciate knowing that fact and if possible, the name of your successor.

Your secretary is making two recommendations to the Committee on Constitutional Revision. First, I would urge a change in wording in a constitutional amendment voted at Peoria requiring the secretary to notify any chapter of probation status should it fail to have five members each year. The former rule required this standing in any two year period. I have two reasons for this recommendation. In the first place it makes a policeman of your secretary who is constantly in the position of exacting penalties. I don't believe the national office of Pi Kappa Delta should be primarily punitive. In the second place, and more important, I have observed that many chapters initiate in two year cycles, having membership requirements above the national minimums. I believe that they should be granted this privilege and autonomy.

The second recommendation is to raise the charter fee from ten dollars to twenty-five dollars. The present fee is ridiculously low. It does not even pay for the actual physical charter. The cost of the parchment and the engrossing of the names averages from twelve to fifteen dollars. In addition there is considerable correspondence, the polling of chapters, and in some cases an actual campus visitation. It would seem that a college interested in obtaining a charter of Pi Kappa Delta would not find a fee of twenty-five dollars a barrier.

Perhaps the following observation should more correctly appear in a president's report or through some other channels but I believe that it is important enough to receive consideration and so I comment on it here. I believe that Pi Kappa Delta should give serious thought to its future. We are living in days of transition. Changes in philosophy in speech education, in campus attitude toward student activities, in the physical conditions imposed on us by the defense program should cause us to think seriously about our organizational structure, our membership requirements, and our convention plans and programs. Some chapter correspondence during the past year has indicated concern with these matters. I am anxious that Pi Kappa Delta remain the live, vital society that it is and to do so we must be progressive and alert to change, not reactionary and content and complacent. I have no definite recommendations to make but it might well be worth a free discussion on the convention floor, in the lounges of the Student Union, and in the pages of the *Forensic* during the next two years.

Finally, I offer you our assistance



with chapter matters while you are here at the convention. We have at the registration desk supplies of application forms, key orders blanks, rituals, and constitutions. We will be glad to figure key prices for you and to mail orders directly from here. If we can answer any of your questions we'll be glad to do so. I am especially anxious to meet all new sponsors.

Respectfully submitted,  
S. R. Toussaint  
Secretary - Treasurer

It was moved that the report be accepted. Carried.

It was moved that the President appoint a committee of seven students and faculty members to report at the Thursday business meeting on the desirability of selecting a second debate proposition to be announced in January for use at official province and national conventions. Carried. President Collins announced that he would post the names of the committee members on the bulletin board.

It was moved that trophies be awarded to the top 10% of teams in each division (men's and women's) as Sweepstakes awards. It was moved to amend the motion to substitute "top four chapters" for "top 10% of teams" in the original motion.

It was moved that the meeting adjourn. Carried. Before adjourning the meeting the President called for the report of the Committee on Nominations, giving the result of the balloting as follows: President, Roy D. Mahaffey; Vice-president, John Randolph. The meeting adjourned at 12:01 p.m.

### THIRD BUSINESS SESSION

The meeting was called to order at 1:33 p.m., Thursday, March 29.

Announcements were made by Harry H. Anderson and John Green of the Local Committee.

President Collins appointed the following members of a Committee on Evaluation to study Pi Kappa Delta practices and convention procedures and to report for the good of the order at the next biennial convention.

Edward S. Betz, Chairman, College of the Pacific, California.

H. L. Ahrendts, Nebraska State Teachers College, Kearney.

Herbert L. Curry, Central Michigan College of Education, Mt. Pleasant.

Robert Capel, Stephen F. Austin State Teachers College, Texas.

J. Glenn Ross, Eastern Illinois State College, Charleston.

Roy DeBoer, Colorado State College of Education, Greeley.

President Collins appointed the fol-

lowing members of a Committee on Revision of the Ritual:

John Randolph, Chairman, Westminster College.

Lester McCrery, California Institute of Technology.

Robert Forsythe, College of St. Catherine.

M. Harold Mikle, Bowling Green State University.

The Committee on Nominations presented the following nominations for National Councilmen:

D. J. Nabors, East Central State College, Oklahoma.

Theodore F. Nelson, St. Olaf.

Lawrence E. Norton, Bradley.

Herman Pinkerton, Tennessee Polytechnic Institute.

E. O. Wood, Baylor.

It was moved to accept the report. Carried. The chair called for nominations from the floor. There were no nominations. It was moved to close nominations and proceed to ballot. Carried.

Ballots were deposited on roll call which showed 131 chapters present and voting.

Lawrence E. Norton, Chairman, presenter an oral report for the Committee on Discussion. He pointed out that the students participating had entered enthusiastically into the program and that the result of the general assembly showed a rather even division of sentiment on items suggested as important in furthering the Welfare State.

It was moved to accept the report. Carried.

Cunera van Emmerik presented the report of the Committee on Invitations.

The committee on Convention Invitations has received invitations and tentative invitations from five schools or areas.

1. Columbus, Ohio, from the Deshler-Wallick Hotel and the Convention Bureau.
2. The Milwaukee Association of Commerce.
3. Colorado A and M College at Fort Collins, Colorado.
4. The Pi Kappa Delta Schools of the Los Angeles Area.
5. Washington State College at Pullman, Washington.
6. Oklahoma A and M College, Stillwater.

The committee set up the following definite requirements for entertaining the convention.

1. The possibility of a four-day convention.
2. Assistance in registration of the delegates.
3. 100 contest rooms.
4. 12 conference or committee rooms.



5. A hall seating between 600 to 800 for the business meetings.
6. The same hall or another, seating the same group for the convention dinner and one large enough for the formal dance.
7. Housing accommodations for the entire group with price per person. These accommodations should offer a combination of capacity rooms for from 4 to 8 or 10, and private rooms or semi-private rooms for 1, 2, 3 or 4 persons.
8. Accommodations for the group for 11 meals with a "packet" price for those meals.
9. Adequate transportation facilities in and out of the city.
10. Adequate parking space for those who come by car.
11. Tentative approval by the province within whose bounds the tournament will be held.
12. In case of campus accommodations, an invitation from the president of the school.
13. All of these items to be submitted in writing.

The Invitation Committee has the formal invitation and statement concerning most of the requirements, in writing or by word of mouth from Mr. Frank and Mr. Pfeiffer regarding the Columbus, Ohio, proposal.

For Washington State College the committee has most of the details in writing, and a formal invitation from Mr. Veatch.

For Colorado A and M and for the Los Angeles area these details and official invitation are to be submitted to the National Secretary of Pi Kappa Delta.

For Milwaukee there is only a brief statement of interest.

For Oklahoma A and M College the invitation to return was oral. We are all acquainted with the facilities.

In each case the committee is asking that a full statement concerning the invitation be sent to the National Secretary as soon as possible but not later than June 1st.

Further than this the committee wishes to make definite recommendations to the National Council.

1. That the National Secretary shall make the preferential poll starting October 15. That all locations which can meet the needs for the national tournament according to information at hand at that time shall be listed.
2. That on November 15 the National Secretary shall report to all those issuing invitations whether their invitations are still on the list of those being considered.
3. That, in order that the Council may have a wider variety of types

of settings for the convention, the National Secretary shall investigate the possibility of holding a national convention at large camps such as the Northern Baptist Camp Grounds at Green Lake, Wisconsin.

4. That the Council shall attempt to rotate the places of meeting among the following approximate areas: the West, the North Midwest, the South Midwest, and the East. The Council shall determine the bounds of each of these areas. Such a rotation would mean two meetings in the general Mid-West area to one meeting each of the general East and West areas.

Respectfully submitted,

Cunera van Emmerik

Theodore O. H. Karl

It was moved to accept the report. Carried.

M. G. Christopherson, Chairman, presented the report of the Committee on Resolutions.

#### REPORT OF THE RESOLUTIONS COMMITTEE

Pi Kappa Delta, National Forensic Honor Society has convened in its Seventeenth National Convention, at Stillwater Oklahoma, on the Campus of Oklahoma A. & M. College.

The society, through this Resolutions committee, desires to express a deep and continuing appreciation to the courtesy and thoughtful hospitality given to us as visitors on the A. & M. campus by the students, the faculty, the administration, and the special committees of the host institution.

The thanks of the society are extended to the Host Province and its chapters, to the host chapter, Oklahoma Alpha, its faculty member and Province Governor, Harry H. Anderson for the efficient organizational work of the tournament and convention. Further thanks are extended to the Board of Trustees of A. & M. College and to its president, Dr. Harry G. Bennett who has more than made good on his welcoming statement that "Every effort is being put forth to make your visit both pleasant and worthwhile."

The Society thanks those who made the Easter services beautiful and impressive.

The Society extends thanks to its officers for the efficient performance of their duties: President Sherod Collins, Vice President Roy D. Mahaffey, Secretary-treasurer (and official bearer-of-the-brunt S. R. Toussaint; Council Members D. J. Nabors, John Randolph, and E. O. Wood; the Immediate Past President Ed. Betz; the Editor of the *Forensic*, Wilbur E. Moore and Roy D. Murphy, Associate Editor.

The Society thanks all the committees which worked so well together:



the various committees of the contests, the committees which gave us the rooms to sleep in, eat in, argue in, and plan in, the committee that gave us the barbecue and the formal dance, the committee that brought many of us to town from way out in the wide open spaces, the committees that counted ballots, and the committee that made the judges go to work.

The Society especially thanks chairman E. O. Wood and his "Little Helpers" for *The KEY* and the horrible menu announced for the banquet, and the special bulletin of their resignation.

The Society furthermore thanks the action of The Council in authorizing Secretary S. R. Toussaint, upon the recommendation of The Resolutions Committee, to send a telegram to the North Central Association now meeting in Chicago in protest against the action of the contest committee which is even now trying to discontinue interscholastic speech contests in its area.

The Resolutions Committee recommends at this time that our Secretary, S. R. Toussaint be requested to send to our government at Washington a statement that the facilities of Pi Kappa Delta are available for use in this continuing time of emergency.

And finally, let us give credit to the feeling of cooperation among the men and women of Pi Kappa Delta which brings together six hundred forty persons in open competition and open convention as a concrete example that men's minds can meet in friendly controversy even in a world filled with ambiguity and tension.

Respectfully submitted,  
M. G. Christopherson  
So. Carolina Zeta, Chairman

It was moved to accept the report.  
Carried.

#### REPORT OF THE CHARTER COMMITTEE

Roy D. Mahaffey, Chairman, presented the report of the Charter Committee.

Committee moves that Charters at the following colleges be suspended for a period of two years: Spring Hill, Alabama; Parsons, Iowa; North Carolina State; Trinity, Texas; East Texas; West Virginia Wesleyan; State Teachers College, Johnson City, Tennessee. That the National Council contact the authorities at the University of Cal. L.A. to determine the future status there with action to be taken after hearing their reply. That Missouri Valley College be continued on a limited suspension until they have completed arrangements made with the charter committee.

That the following colleges have their

charters revoked: Ariz. State, Flagstaff; Henderson State, Arkansas; Univ. of Conn.; Colby, Maine; Park, Missouri; Jamestown, North Dakota; Southwestern Texas; Oshkosh, Wisconsin.

That the following schools be granted charters: Northwestern State, Natchitoches, Louisiana; Western Washington College of Education, Bellingham, Washington.

Respectfully submitted,  
R. D. Mahaffey, Chairman  
Herman Pinkerton  
Clara Mawhinney

It was moved to accept the report.  
Carried.

#### REPORT OF THE CONSTITUTIONAL REVISION COMMITTEE

Theodor LeVander, Chairman, presented the report of the Committee on Constitutional Revision.

#### PROPOSED AMENDMENTS ON CHARTER FEES

On page 10, Article V, Division A, Section 6, Line 14: We move that the word "ten" be stricken and words "twenty-five" be inserted. It was moved that this section of the report be approved.  
Carried.

#### ON MODIFICATION OF DEGREE REQUIREMENTS

1. Degree of Fraternity - no change.
2. Degree of Proficiency
  - (a) Order of Oratory - no change
  - (b) Order of Debate - 2 amendments
    - A. On page 7, Line 17, Article 4, Division C, Section 2: We move that the word "eight" be stricken and the word "ten" be inserted.
    - B. Also, in Line 18, the same section: We move that the word "fifteen" be stricken and the word "sixteen" be inserted.

It was moved that this section of the report be approved. Carried.

3. Degree of Honor
  - (a) Order of Oratory - On page 7, Article 4, Division C, Section 3, Line 4: We move that the words "participated for two college years and have" be inserted between the words "have" and "won" on line 4, making the sentence read: "The candidate shall have participated for two college years and have won first place in a recognized intercollegiate contest with six or more recognized institutions participating, or second place in a recognized contest with nine or more institutions participating; or shall have represented his college in four recognized intercol-



legiate contests in oratory or extemporaneous speaking, using three different orations or speeches on three different subjects; or shall have participated for three years in individual original speaking, using six different subjects; or shall have received a rating of excellent in the contests sponsored by the National Convention."

(b) Order of Debate - 2 amendments

A. On page 7, Article 4, Division C, Section 3, Line 21: We move that the word "twelve" be stricken and the word "fifteen" be inserted.

B. Also, on the same page, line 23: We move that the word "twenty" be stricken and the words "twenty-four" be inserted.

It was moved that this section of the report be approved. Carried.

4. Degree of Special Distinction

(a) Order of Oratory - On page 8, Line 5, Article 4, Division C. Section 4: We move that the words, "for at least three college years and" be inserted between the words "participated" and "in", making the sentence read: "The candidate shall have participated for at least three college years and in at least four intercollegiate speech contests, entered by not less than six recognized institutions, and shall have won first or second place in at least three such contests using three different orations or speeches on three different subjects."

(b) Order of Debate - Also, in that same section under Order of Debate: We move that the word "eighteen" be stricken and the word "twenty" be inserted.

It was moved that this section of the report be approved. Carried.

Respectfully submitted,

T. G. Morrison

Charles T. Battin

Theodor LeVander, Chairman

The secretary presented the applications of John Mix and Thomas Cameron of San Jose State College, California, for membership in the general chapter in accordance with Article V, Division C, Section 6, of the Constitution. It was moved that the applications be received and the memberships approved. Carried.

The secretary presented for the National Council the nomination of Harvey Cromwell, Mississippi State College for Women, as Editor of the *Forensic*. It was moved that the convention ratify the nomination. Carried.

Roger Nebergall, Chairman, presented the report of the Committee ap-

pointed to study the possible adoption of a second debate proposition.

Report of the Committee to Study the Possible Adoption of A Spring Pi Kappa Delta Question.

Whereas, it is evident that many chapters would find it impossible to give adequate preparation to more than one question, and

Whereas, every chapter has the opportunity to seek debates on other questions by special agreement with opponents and by participation in tournaments of other associations.

Your committee recommends:

(1) That Pi Kappa Delta retain the present practice of cooperating in the selection of one national question.

(2) That each province shall have the authority for its own provincial convention to make such revision of the national question it may desire, or to substitute another question.

(3) That the National Council shall by December 31 of each year consider the advisability of seeking through its delegates to the National Collegiate Debate Question Committee such revision of the question as may appear desirable.

Committee

Roger Nebergall - Bradley University - Chairman

James Cox - Baldwin-Wallace

Mary Lou Falvey - St. Catherine

H. M. Burrows - Grove City

Cedric Crink - Weatherford, Okla.

Mary Neely - George Pepperdine

Ruth Ann Story - Texas A and I

It was moved to accept the report. Carried.

It was moved to revise the constitution by referendum by adding to Article V, Division A, Section 13 (page 12) the sentence, "This section shall not apply to any chapter more than 2,000 miles from two consecutive conventions." Motion lost.

It was moved that the secretary be instructed to purchase four trophies for the top four chapters in the men's division and for the top four chapters in the women's division as sweepstakes awards. Motion lost.

It was moved that the Committee on oratory should examine the orations and send those selected to the Member of Congress of the Congressional District involved for reading into the Congressional Record. Carried

The Committee on Nominations reported that D. J. Nabors, Theodore F. Nelson, and Lawrence E. Norton had been elected to the National Council.

The meeting adjourned at 3:55 p.m.



# Pi Kappa Delta

## Convention Registration

### ALABAMA

#### Alabama College

Leonard M. Davis, Coach  
Patricia Alexander  
Dorothy Davis  
Betty Teague  
Helen Stilwell

### ARIZONA

#### Arizona State (Tempe)

Dean F. McCsloy, Coach  
Joseph Greenwalt  
James Cleckner  
Wayne Legg

### ARKANSAS

#### Quachita College

David O. Moore, Coach  
Orvel Hooker  
Lucien Coleman

### CALIFORNIA

#### University of Redlands

E. R. Nichols, Coach  
James Wilson  
Holt Spicer  
Fowler Shaw  
Margaret Schoen  
Robert Evans

#### California Institute of Tech.

Lester McCrery, Coach  
Ulrich Merten  
Stan Croner

#### College of the Pacific

Edward S. Betz, Coach  
Kurtis Mayer  
Margaret Pulich  
Margaret Riggs

#### George Pepperdine College

Emmett T. Long, Coach  
Lyndell Cheeves  
John Crooker  
Don Ruston  
Mary Neely  
Dorothy Machenheimer

#### San Diego State College

John W. Ackley, Coach  
Clifford Wallace  
Dick Roddis  
Jerry Christenson

### COLORADO

#### Colorado A and M

Roy C. Nelson, Coach  
Charles Grandy  
Larry Knill  
Katherine French  
Joan Wagner  
Geraldine Walp  
Patrick Joseph McHugh

#### Colorado State

Ray L. DeBoer, Coach  
Jim Pitzer  
Vic Walter  
William McClaren  
Myrna Bailey  
Bonnie Ackers  
Rowland Elder

### Western State College

Jess W. Gern, Coach  
John Leehey  
Anne Flick  
Virginia Tessman  
Joanne Jennings  
Wayne Turner

### FLORIDA

#### University of Miami

Donald Sprague, Coach  
Ray Adkins  
Carl Cohen

### GEORGIA

#### University of Georgia (Atlanta Division)

H. E. Smith, Coach  
Merlin Holland

### IDAHO

#### College of Idaho

Erwin H. Schwiebert, Coach  
Bob Smith  
Bruce Fallert  
Dennis Mullins  
Ann McMillan  
Patsy Houston

#### Northern Idaho College of Education

R. C. Ruechelle, Coach  
Charles Gifford  
Harry Bradley

#### Idaho State College

Carl Isaacson, Coach  
John Judd  
Edward Willmore  
Keith Gill  
Beverly Crowley  
Julia Ward

### ILLINOIS

#### Illinois Wesleyan

Lola Jacobs, Coach  
Bill Akerly  
John Dale  
Joseph Shive

#### Carthage College

Gerald W. Kroeger, Coach  
Otis Hammel  
Everett Roberson  
Ted Rickabaugh  
Stuart Swihart

#### Bradley University

Larry Norton, Coach  
Roger Nebergall, Coach  
William Boege  
Warren Reynolds  
Joe Smith  
Richard Velde  
Joan Severns  
Beverly Eisele  
Bill Sanders

### Monmouth College

George P. Scharf, Coach  
Kenneth Miller  
Jack Kelly  
Lois Baehr  
Betty Phillips

### Illinois State Normal University

Ralph A. Micken, Coach  
F. L. D. Holmes, Coach  
Marvin Kleinau  
Don McConkey  
Stanley Rives  
Norma Little  
Margaret Frye  
Marjorie Johnson  
Sam Wahfeldt

### Wheaton College

C. L. Nystrom, Coach  
Glenn Heck  
Richard Robinson  
William Webber  
Barbara Kott  
Lee Kinney  
Gilbert Bowen

### Western Illinois State Col.

Harold F. Schory, Coach  
Dewey Hughes  
Herman Koester  
Jerry Howard  
Barbara Ahlberg  
Helen Bloome

### Augustana College

Don Tornquist, Coach  
Ted LeVander, Coach  
Martin J. Holcomb, Coach  
Arnold Lack  
David Loring  
John Raschke  
Clarence Meyer  
Barbara Conover  
Donna McMullen  
Janis Schrage

### De Paul University

George Holland  
William Belmont

### Northern Illinois State Col.

Paul Crawford, Coach  
John Whitt  
Charles McNames  
Gladys Anderson  
Therese Worland  
Elinor Ham

### Illinois College

L. P. Dudley, Coach  
John Marsh  
Wayne Hannah  
Richard Mills  
Donald Polzin



**The Principia**

Clayton D. Ford, Coach  
 Samuel S. Staley  
 Robert Merritt  
 Robert Curlender  
 Nancy Young  
 Patsy Herget

**Eastern Illinois State**

J. Glenn Ross, Coach  
 Paul Koester  
 Richard Riggins  
 Norma Metter  
 Louise Biedenbach

**James Millikin University**

L. C. McNabb, Coach  
 Marshall Susler  
 Roy Newman  
 Eleanor Bieler  
 Doris Lessman

**Southern Illinois University**

Albert J. Croft, Coach  
 Thomas O. Sloan  
 Carroll F. Boyles  
 Jo Ann Eblen  
 Carolyn Reed  
 Doris Schwin

**INDIANA****Franklin College**

Gareth Matthews

**IOWA****Iowa Central College**

Cunera Van Emmerik,  
 Coach  
 Don Brukkink  
 Eugene Heideman  
 Alvin Poppen  
 Ronald Zoutendam  
 Peggy Leu

**Morningside College**

Ayres McGrew, Coach  
 Georgia Dandos  
 Eleanor Mohr

**Simpson College**

Elva M. Bramhall, Coach  
 Scott Krane  
 Roger White  
 Georgia Mae Boyd  
 Emily Ann Jordan

**Upper Iowa University**

James C. Brown, Coach  
 Earl Mason  
 Craig Whitnev  
 Emma Jean Slaughter

**Westmar College**

Francis Boelter, Coach  
 Donald Frogge  
 J. Sackman  
 Manford Erdahl  
 James Nelson

**Drake University**

Ray Berrier, Coach  
 Charles Qualley  
 Thomas Flynn  
 Warren Gasink  
 Jim Mannasmith

**Luther College**

Kenneth L. Berger, Coach  
 Morgan Kjer  
 Bill Jensen  
 Jean Schultz  
 Joan Gallagher  
 Helen Peterson

**KANSAS****Ottawa University**

Dale Purcell, Coach  
 Mary DeFries  
 Joan Baker

**Washburn University**

G. S. Fulbright, Coach  
 Wesley Otto  
 Robert Sellen  
 Leland Spurgeon  
 Justice Foote

**Southwestern**

Alice Gordon Wilson

**Kansas State Teachers****College (Emporia)**

Charles Masten, Coach  
 Bob Kaiser

**Kansas State Teachers****College (Pittsburg)**

Mary M. Roberts, Coach  
 Glen Hastings  
 Bill England  
 Veralee Taylor  
 Dorothy Ann Cresap

**Baker University**

Herbert C. Brockman,  
 Coach  
 Phil Bosserman  
 George Anderson  
 Ralph Larson, Coach

**Bethany College**

Ross Larson  
 Robert Karan

**Kansas State (Fort Hays)**

J. R. Start, Coach  
 Bill Pike  
 Eldon Laidig  
 Alyce Barstow  
 Joan Wilkerson

**McPherson College**

Maurice A. Hess, Coach  
 Roy McAuley, Coach  
 Rechtel, Gene A.  
 Wayne Zeigler  
 Miriam Akers  
 Joan Pinther Keim  
 Elsa Kurtz

**Bethel College**

W. T. Wilkoff, Coach  
 Elmer Neufeld  
 Pete Ediger  
 Gladys Pearl Schmidt  
 Mary Mover

**KENTUCKY****Georgetown College**

Hollis Summers, Coach  
 William Cawley  
 Leroy Albright  
 Lucille Hempel  
 Ruth Payton

**Centre College**

W. T. Hill, Coach  
 Robert Jones  
 Ollie Chester  
 George Bennett  
 Don Miller  
 Carl Steely  
 Mayo Smith

**Kentucky Wesleyan**

Lena Mae Scott, Coach  
 Jacke C. Harris  
 Marion A. Douglas Jr.  
 Riley D. Shirley Jr.  
 W. Glenn Sowards

**LOUISIANA****Louisiana College**

Jack Carter, Coach  
 Allen E. Stephens  
 Frank Pounders  
 Dorothy McDaniel  
 Nan McFarland

**Centenary**

Joseph Gifford  
 Robert Regan  
 Quinton Raines

**Southwestern Louisiana****Institute**

Roy D. Murphy, Coach  
 Dan Harper  
 Felix Frederick  
 Billie Trahan  
 Janet Delhomme  
 Glenora Jory  
 Grace Kieffer

**Louisiana Tech**

Wilma Baugh, Coach  
 Woodrow Hearn  
 Wayne Durham  
 Anne Connaughton  
 Peggy Robison

**MICHIGAN****Kalamazoo College**

Ethel A. Klump, Coach  
 William Zuhl  
 Richard Means  
 Richard Timmer  
 Kenneth Venderbush  
 William Ives  
 Gwendolyn Schwarz

**Hope College**

William Schrier, Coach  
 Gail Van Zyl  
 Roy Lumsden  
 Guy Vander Jagt  
 Mary Olert  
 Gerdine DeGraff

**Michigan State**

Frederick Alexander,  
 Coach  
 Irving Nelson  
 Bruce Borey  
 Stanley Taylor  
**University of Detroit**  
 Henry C. Schneidewind,  
 Coach  
 Thomas L. Clanon



**Central Michigan**

Wilbur E. Moore, Coach  
 Herbert L. Curry, Coach  
 Emil R. Pfister, Coach  
 Grant Little  
 Richard Cronk  
 Gene Courter  
 William Pietscher  
 Patricia Hild  
 Joanne Olmstead  
 Betty Taylor  
 Patricia Thwaites

**MINNESOTA****Macalester**

Mrs. Harold Krieger,  
 Coach  
 Janice Schneider  
 Marilyn Walchuk

**St. Olaf College**

Theodore F. Nelson,  
 Coach  
 Kenneth Wilkens, Coach  
 David Hardy  
 Arthur Olson  
 Morris Ormseth  
 Ruth Michelsen  
 Anita Erickson  
 Audre Rasmussen  
 Grace Kylling

**Gustavus Adolphus**

C. E. Sjostrand, Coach  
 Vernon Bergstrom  
 William Robertz  
 Maynard Jacobson

**Hamline University**

Bruce Reuther  
 James Seeden

**St. Thomas College**

Robert J. Hogenson,  
 Coach  
 Thomas Kennelly  
 James Rooney

**St. Catherine College**

Robert A. Forsythe,  
 Coach  
 Mary Lou Falvey  
 Mary Lou May  
 Rosemary Manion  
 Lael Dudley

**St. Mary's College**

Brother J. Leonard, Coach  
 Andrew Park  
 Eugene McEnery  
 Don Bachner

**MISSISSIPPI****Millsaps College**

Tulane Posey

**Miss. State College for Women**

Harvey Cromwell, Coach  
 Judy Garretson  
 Valerie Threlkeld  
 Melba Wilcox

**Mississippi Southern**

Marevelle McMillan,  
 Coach  
 Katherine Blair  
 Dalton Burch  
 Mike Martinson

**MISSOURI****Westminster**

John Randolph, Coach  
 Dan Craig  
 Jack Ryan  
 Roger Schrader  
 Darrell Wilson

**Missouri Central**

Harold C. Svanoe, Coach  
 Donald Hutson  
 Robert Van Horn  
 Gilbert Weiss

**William Jewell**

Wylla Decker, Coach  
 Judith Borchers  
 Anita McPike  
 Norma Ruthe Rosendale  
 Jim Hunter  
 Joe Taylor  
 Dick McCoy  
 George Dooley

**Northeast Missouri**

Sherod J. Collins, Coach  
 Paul Andereck  
 Burleigh Arnold  
 Fred Hanes  
 Walter Rylee

**Southeast Missouri**

Fred Goodwin  
 Kenneth Moll

**Missouri Valley**

Gratton Kemp, Coach

**Tarkio**

Claudio Salas

**Drury**

Coach  
 Mrs. Mary Cleve Payne,  
 Hal Smith  
 Gary Adamson  
 Nancy Holland  
 Diane Parker

**Rockhurst**

Glenn C. Combs, Coach  
 Harry S. Jones  
 John T. Kehoe

**St. Louis University**

Al Fisher

**MONTANA****Montant State**

Gerald Dull

**NEBRASKA****Nebraska Wesleyan**

Walter H. Murrish, Coach  
 Milton Krogh  
 Dean Lanning  
 Bob Whited  
 Ann Baumgartner  
 Joanne Parker

**Doane**

Norman J. Hansen, Coach  
 Bob Barnes  
 Donald Tarr  
 Dawson Jelinek  
 Donna Seppala  
 Joan Underwood  
 Tom Johnson

**Hastings**

Frank T. Alusow, Coach  
 William Laux  
 Robert Oberg  
 Lorna Wilson  
 Marilyn Wright

**Nebraska State Teachers (Kearney)**

H. L. Ahrendts, Coach  
 William Allen  
 Jack Roberts  
 Rose Christensen  
 Jeannette Harrison

**Midland**

Sara A. Hawkinson,  
 Coach  
 Phil Hefner  
 Del Weber  
 Donna Hamilton  
 Shirley Wood

**Nebraska State Teachers (Wayne)**

Lenore P. Ramsey, Coach  
 James McCarthy, Coach  
 Loy Elser  
 Dick Halama  
 Ron Reed  
 Joan Hooker  
 Carolyn Olson  
 Dona Johnson Sala

**NORTH CAROLINA****Wake Forest**

Franklin R. Shirley,  
 Coach  
 Wiley Mitchell  
 Virgil Moorefield  
 Lucius Pullen  
 Cecyle Arnold  
 Elva Lawrence

**Appalachian**

D. J. Whitener, Coach  
 Elmo Mortz

**Baldwin-Wallace**

M. Scheffel Pierce, Coach  
 James Cox  
 Kent Ozmun

**Hiram**

Maurice Klein  
 John Mendiola

**University of Akron**

Ray H. Sandefur, Coach  
 William Boles  
 Wallace Zimmerman  
 Joan Davidson  
 Marilyn King

**Marietta**

Ruth A. Wilcox, Coach  
 John Ahart  
 Charles Rawlings  
 Alice Press

**Bowling Green State University**

M. Harold Mikle, Coach  
 Jerry Helwig  
 Fred Gerlach  
 Ron Polhill  
 Adelle. Kihlken  
 Pat Sikes  
 Pat Swineford



**Kent State University**

R. L. Kent, Coach  
Al Pontius  
Tom McManus  
Geraldine Carroll  
Bette Cosetti

**OKLAHOMA****University of Tulsa**

B. K. Melekian, Coach  
Bradley Jesson  
Banks McDowell

**Oklahoma Baptist**

Lee B. Spencer, Coach  
George Smith  
James Lane

**Oklahoma A and M**

Harry H. Anderson, Coach  
Barbara Brown, Coach  
Dudley Andrews  
Dick Burgess  
Kenneth Dunn  
Ronald Jones

**Oklahoma City University**

J. D. Hoover, Coach  
Bob Turner  
Charles Moss  
Bill Nighswonger

**East Central State**

Barbara H. Wetherill, Coach  
Jeannette McDonald  
Yvonne Ray  
June Woodley  
Betty Woodley

**Southeastern State (Durant)**

Paul Pennington, Coach  
T. A. Houston, Coach  
John Dominguez  
Charles Wheeler

**Central State (Edmond)**

Joe C. Jackson, Coach  
John Rogers  
C. H. Spearman  
Joyce Kennedy  
Lanora Owens

**Phillips University**

James M. Ladd, Coach  
Ira G. Morrison, Coach  
Charles Bayer  
Sam Bogart  
Lex Davis  
Lee Barry  
Paula Bowman  
Shirley Kifer  
Norma Jean Stacey  
Betty Stainer

**Northeastern State****(Tahlequah)**

James Robinson, Coach  
Bill Hall  
James Khourie  
Fred White  
Joan Bass  
Helen Ann Biswell  
Virginia Burleson

**Southwestern State****(Weatherford)**

Cedric L. Crink, Coach

Troy Caswell

John Combs

**OREGON****Linfield College**

R. D. Mahaffey, Coach  
Kenneth Bates  
Paul Little  
Mary Jean Wilson

**PENNSYLVANIA****Grove City**

H. M. Burrows, Coach  
John Britton  
Gerald Anderson  
Donald Powers  
William Tennant  
C. Vincent Wilson

**Seton Hill**

Louise Doherty  
Cathryn Cunningham

**SOUTH CAROLINA****University of South****Carolina**

M. G. Christopherson, Coach  
Furman McEachern  
Sanford Zahler

**SOUTH DAKOTA****Northern State (Aberdeen)**

P. J. Harkness, Coach  
William Castle  
Dennis Maloney  
Bruce Mannes

**South Dakota State**

Bill Turner, Coach  
Richard Chapman  
Harvey Martens  
Jerome Miles  
Earl Stucke  
Melvin Wedmore

Mavis Himrich

Patricia Wilkins  
Geore Platt

**Sioux Falls**

Leslie E. Davis, Coach  
Lyman Anderson  
Wayne Hoogestraat

**Augustana (South Dakota)**

Hugo A. Carlson, Coach  
Douglas Lindgren  
John Peters  
Robert Wagner  
Dona Carlson  
Ruth Weinberg

**TENNESSEE****Maryville**

Arda Walker, Coach  
Louis Evans  
Edward Witherspoon  
Betty Corbett  
Carolyn Miller

**Carson Newman**

J. A. Chapman, Coach  
David Denton  
Kenneth Tunnel  
Virginia Whitehead  
Sarah Wilson

**Tennessee Tech**

Herman Pinkerton, Coach  
James Bradshaw  
David Bridges  
Mary Chastain  
Sue Wallace

**TEXAS****Howard Payne**

Theta P. Hargrove, Coach  
R. C. Hammock  
Effie Fairweather  
Virginia Mahan

**Mary Hardin-Baylor**

F. E. Short, Coach  
Carol Blankenship  
Ernestine Holder

**North Texas State**

T. B. Hyder, Coach  
Mike Earney  
Thomas Hughes  
Peggy Huse  
Mary Scott

**Texas Christian University**

E. L. Pross, Coach  
Jim Cunningham  
William Powell  
Larry Sullivan

**Hardin-Simmons University**

John Caylor, Jr., Coach  
Bill Hill  
Jack Tidwell  
Jack Yates

**Baylor University**

Glenn R. Capp, Coach  
Calvin Cannon  
Ted Clevenger  
Wallace Finkrock  
Charlotte Dorrill  
Shirley Frank

**Southwest Texas  
(San Marcos)**

Karen Corley  
Dolores Stark

**Stephen F. Austin State**

Robert Capel, Coach  
W. L. Bane  
Steinman Stephens

**Texas A and I**

Harry H. Ullom, Coach  
Lloyd Riddle  
J. Edd Walton  
Anna Ruth Story  
Lola Bonner

**WASHINGTON****College of Puget Sound**

Charles T. Battin, Coach  
Larry Grotz  
Barry Garland  
Jackie Hodgson  
Arlene Olsbach  
Marilyn Strandswold

**Washington State College**

W. H. Veatch, Coach

**Pacific Lutheran College**

Theodore O. H. Karl, Coach  
Jon Ericson  
Bill Rieke  
Mary Larson



**WEST VIRGINIA****Marshall**

Don Roeder

**WISCONSIN****Ripon**

Paul Pretzel

**Carroll**

Eugene R. Moulton, Coach

Annette Avers

Sharon Grabow

Nancy Peterson

**River Falls Teachers College Eau Claire State Teachers**

Marion E. Hawkins, Coach

Ernie Gay

Jack Hanson

Jim Von Tatenhove

Dick Vilstrup

Heather Dopkins

Grace Walsh, Coach

Ron Allen

Cletus Howard

Roma Kranzfelder

Joan Reidy

Flaviennne Hanson

Ed Nix

**Whitewater State Teachers**

J. T. von Trebre, Coach

---

**Members of the National Council**

Sherod J. Collins

Roy D. Mahaffey

Edward S. Betz

D. J. Nabors

E. O. Wood

John Randolph

Marilyn Short

Paul W. Koester

S. R. Toussaint

**Guests and Visitors**

Mrs. Edward S. Betz, Stockman, California

Clair Burgener, San Diego, California

Alfred Westfall, Fort Collins, Colorado

Mrs. S. R. Toussaint, Greeley Colorado

Julia Toussaint, Greeley, Colorado

Mrs. Carl Isaacson, Pocatello, Idaho

Mrs. C. L. Nystrom, Wheaton, Illinois

Mrs. Dale Purcell, Ottawa, Kansas

George R. R. Pflaum, Emporia, Kansas

Mrs. H. C. Brockman, Baldwin, Kansas

Mrs. J. R. Start, Fort Hayes, Kansas

Mrs. William Pike, Fort Hayes, Kansas

Mrs. W. T. Wilkoff, Newton, Kansas

Mrs. Milton Mason, St. Paul, Minnesota

Mrs. Theodore T. Nelson, Northfield, Minnesota

Mrs. Sherod J. Collins, Kirksville, Missouri

Mrs. Robert Oberg, Hastings, Nebraska

Mrs. H. L. Ahrendts, Kearney, Nebraska

V. C. Howell, Boone, North Carolina

Willard Friederich, Marietta, Ohio

Mrs. D. J. Nabors, Ada, Oklahoma

Mrs. C. T. Powers, Groce City, Pennsylvania

Murvin Perry, Brookings, South Dakota

Mrs. J. A. Chapman, Jefferson City, Tennessee

George T. Tade, Greenville, Illinois

Mrs. Harry H. Anderson, Stillwater, Oklahoma

Mr. and Mrs. John Green, Stillwater, Oklahoma

Mrs. J. D. Hoover, Oklahoma City, Oklahoma



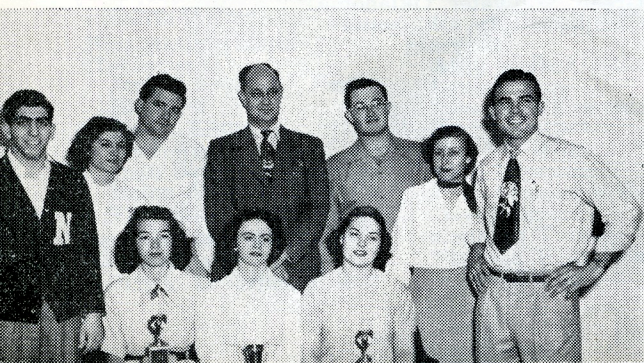
# Sweepstakes Awards

## WOMEN

Bowling Green  
Central Oklahoma  
Eastern Illinois  
Luther  
Macalaster  
N.E. Oklahoma  
Redlands  
St. Olaf

## MEN

Augustana, Ill.  
Baylor  
Bowling Green  
Central Oklahoma  
Eastern Illinois  
Emporia  
N.E. Oklahoma  
Redlands  
San Diego  
St. Olaf  
St. Thomas



Coach James Robinson  
and his squad that won  
both sweepstakes.