

THE FORENSIC

SERIES 2

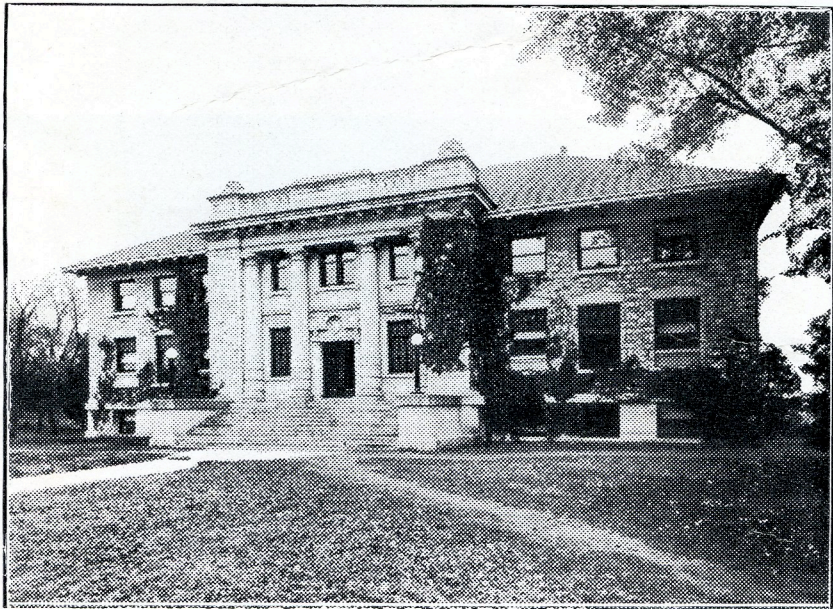
NUMBER 1



OF

PI KAPPA DELTA

FEBRUARY, 1916



LIBRARY AT WASHBURN COLLEGE, TOPEKA, KANSAS
WHERE THE DELEGATES WILL ASSEMBLE FOR THE PI KAPPA DELTA
NATIONAL CONVENTION

THE FORENSIC

Series 2

FEBRUARY, 1916

Number 1

THE NATIONAL CONVENTION

The first National Convention of Pi Kappa Delta will be held March 31-April 1, at Washburn College, Topeka, Kansas. The sessions of the convention will be held in the Y. M. C. A. room of the Washburn College Carnegie Library, a picture of which we print in this issue.

The members of the Washburn chapter are to be the hosts of the convention and will give the delegates and visiting members of the organization a banquet on the second evening of the convention.

President Roy Gwin of the Kansas State Chapter has issued a call for a meeting of the state chapter at the time and place of meeting of the National Convention and the meetings of the state organization will be held when the National Convention is not in session. This meeting will add to the numbers in attendance, so the outlook at the time of writing is quite favorable to a conclave of large size in proportion to the membership of Pi Kappa Delta. The gathering will undoubtedly be one momentous in the history of our organization.

Local Arrangements

President A. G. Beattie of the Washburn chapter writes that he has arranged to secure lodging for the delegates and visitors to the convention in private homes near the college. He mentions the fact that these accommodations will be "modern" and will cost each member only fifty cents a night. Meals at twenty-five cents each have been arranged at one of the college

boarding houses within half a block of the Campus. Hotel accommodations at Topeka run from \$2.00 a day up. The college is about fifteen minutes' ride from the center of the city, however, and for this reason as well as for the saving to the visitors, the Washburn Pi Kappas have arranged for private home accommodations.

The local arrangements for the National Convention will be in charge of Roy E. Painter, 1305 West street, Topeka, and A. G. Beattie, 602 West Sixth street, Topeka. Mr. Painter is Secretary of the Kansas State Chapter and Assistant Secretary-Treasurer of the National Chapter, and is largely responsible for the choice of Topeka as the convention place. Each chapter should notify one of these two men of the number of delegates and members it will have in attendance. State and national chapter members expecting to attend should do likewise, in order that necessary arrangements for entertainment may be made.

Business of the Convention

A large number of matters important to the future of Pi Kappa Delta must be taken up and settled at this first convention. Several constitutional amendments will be offered, among them: (1) a proposition to divide the National office of Secretary-Treasurer into two offices, (2) a provision for admitting members at large in the National chapter, (3) a clause to reduce the national dues to the subscription price of *The Forensic*, (4) an amendment to limit inactive mem-

bership and grant voting privileges to graduate members, (5) the creation of a board of Vice Presidents.

Several important discussions will be held on such matters as: (1) the admission of members of other honorary forensic societies into Pi Kappa Delta, (2) change in key design, (3) amalgamation with other forensic societies, (4) uniform local chapter and officer installation, and initiation ceremonies, (5) uniform State and National obligation forms, etc.

Pi Kappa Delta colors, flower, yell, songs, stationery, etc., will be provided for. Methods of procedure will be explained in all matters of internal organization and the endeavor made to get uniform and concerted action in all matters.

Finances of the organization will be given consideration. Reports on the condition of the treasury and the financial condition of The Forensic will be made.

The expansion policy of the organization will be determined upon, and applications for charters will be considered.

Each delegate will be expected to report on the condition of his chapter, its method of doing things, its special meetings and affairs and its forensic record. This part of the convention will be turned into an experience meeting and the needs of individual chapters will be discussed.

The president will make an address dealing with the state of the organization as a whole, needed things in internal organization, our policy of expansion, our prospects, ambitions and ideals. As he is the editor of The Forensic the needs of that publication will be carefully set forth.

At the close of the convention the officers for the next two years will be chosen and permanent committees will be appointed.

The feature of the convention will be the banquet given by the Washburn Chapter. This will be a real Pi Kappa Delta occasion as there will be a toast list about a mile long to say nothing of

the "big feed." If there is one thing Forensic Honormen should be able to do it is to talk at the after dinner hour. This part of the convention should be a rare treat. The second evening of the convention has been listed on the program as the theater night, but this arrangement is subject to change. The program is as follows:

Program of National Convention

Friday, March 31—

10 A. M. Call to order by Temporary Chairman A. G. Beattie, President Washburn Chapter.

Music.

Address of Welcome by Roy E. Painter.

Response in behalf of the delegates, J. H. Krenmyre.

Introduction of National Chapter President by Temporary Chairman.

President's Address on the state of the order.

Appointment of convention committees. Adjournment.

2:00 P. M. Meeting of the Kansas State Chapter, President Gwin presiding.

3:00 P. M. Meeting of National Convention.

Music.

Reports from chapters by delegates.

Business session.

Adjournment.

Saturday, April 1—

9:00 A. M. Call to order.

Music.

Unfinished business.

Reports of convention committees.

New business.

Election of officers. Adjournment.

2:00 P. M. Call to order.

Completion of business.

Installation of new officers. Adjournment.

7:00 P. M. Banquet given by the Washburn Chapter.

After dinner speeches. (Each chapter represented should have a speaker ready.)

8:00 P. M. Theater party.

THE FORENSIC OF PI KAPPA DELTA

OFFICIAL PUBLICATION OF THE PI KAPPA DELTA FORENSIC HONOR SOCIETY

Issued Four Times a Year

January-February, March-April, May-June, October-November-December

EGBERT RAY NICHOLS, Editor

MANAGING BOARD: JOHN A. SHIELDS, E. A. VAUGHAN, J. H. KRENMYRE

Members National Council, Pi Kappa Delta

Subscription Price \$1.00 a year

Subscription free to Active Members who have paid dues of \$1.50 a year

Entered as second-class matter January 26, 1916, at the postoffice at Redlands, California, under the act of August 24, 1912

Office of Publication: 814 Campus Ave., Redlands, California

Address all copy and communications to E. R. Nichols, Editor, Pi Kappa Delta Forensic Redlands, California

Series 2

JANUARY-FEBRUARY, 1916

Number 1

EDITORIAL COMMENT.

The first National Convention of Pi Kappa Delta is a momentous undertaking for an organization so young, but it is a meeting fraught with great possibilities. Every member should do his best to get there or help send some one else. Pi Kappa Delta is beginning to mean a great deal to many of us, and this convention will make it mean more and more to all of us, for it will start the organization on a career of success and achievement which will no doubt excell the rather remarkable achievement and growth of the last two years. Pi Kappa Delta has come to stay and it means to be an organization that will be felt in the forensic field, the college world, and in the world of future usefulness into which college students ascend.

Meetings of college men from various parts of the country are highly interesting gatherings. In fact, they are wonderful gatherings. American college fraternities have demonstrated this during the last two generations. Among the high lights of a college course are those trips which students take to join other students in the work of some fraternal, educational, ath-

letic, forensic, or religious organization. Every college student should number such an experience within the circle of his college life, an experience "that is part of it." This may be your opportunity.

Each chapter should be planning an initiation evening for some time this spring when oratoricals and debates for the year are over. The new members should be promptly reported to the Secretary and to the Editor of the Forensic upon the proper forms. Remember that cuts of chapters and chapter letters are wanted for the June issue. Be considering this as your college annuals go to press. We can use the same cuts.

Does your chapter have a good, clean financial report to place before the National Convention? Are the dues all paid up? Wouldn't it be fine to score one hundred per cent before the convention with a delegate present able to report the chapter paid up and thoroughly alive in every respect.

There are several chapters in Pi Kappa Delta that are going to attain this. Is yours one?

*AROUND THE CIRCLE.***ATTENTION CHAPTERS!**

Send a delegate to the National Convention. Send several members in addition if you can. Those chapters which can not easily overcome the distance that separates them from Topeka should select a delegate from their own alumni if one is located near, or from the membership of the national chapter. If these alternatives are not possible they should send letters of report and greeting and telegrams to be read at the convention. At least show some sign of life!

The Charter Committee have recommended to the National Council the granting of the Kansas Wesleyan petition for a chapter of Pi Kappa Delta.

Members of the Washburn Chapter are in receipt of communications from Roger W. Wallace, an official of Tau Kappa Alpha, proposing amalgamation of Pi Kappa Delta and Tau Kappa Alpha. Whether or not this proposal refers to the entire organization of Pi Kappa Delta or just to the Washburn chapter is not known at the time this goes to press. The matter will be fully discussed at the National Convention.

K. S. A. C. broke even in its dual debate with the Kansas State Normals on the Open Door Policy in the Orient. There is a rumor that Kansas Normal is getting ready to petition Pi Kappa Delta. The K. S. A. C. debate will probably be printed in the next volume of "Intercollegiate Debates."

The two men who will make the trip East to represent the University of Redlands in its debate with Southwestern College and the University of New Mexico are A. D. Jacobsen, '17, and Fred Fagg, '19. Jacobsen is a member of the Degree of Proficiency and if he wins on this trip will attain the Degree of Honor. Fagg will not become a member of Pi Kappa Delta until after the trip as these are his first intercollegiate debates.

Howard White and Thomas Williams of Southwestern, both members of the Southwestern chapter of Pi Kappa Delta meet the team from the University of Redlands. The question to be discussed is "Government ownership of interstate railroads." They do not expect to see Redlands win as Southwestern's colors are not often lowered in debate. White and Williams are veteran debaters.

Roy E. Painter of Washburn has taken active charge of the Secretary-Treasurership of the National organization, and will receive dues and send out certificates for new members. Keys may also be obtained through him. John A. Shields, the General Secretary, is giving up his Pi Kappa Delta work on account of the stress of other duties. Mr. Shields is leaving the headquarters of the Prohibition party in Chicago and is taking a new position in Washington, D. C.

Arthur L. Crookham of the Charter Committee, who is on the staff of the Evening Telegram, Portland, Oregon, sent in his dollar for The Forensic the other day. He says the Redlands bunch are rash to take on the Southwestern debaters. The Redlands men are willing to take a licking if they have to in order to get to the convention.

The Forensic is in receipt of encouraging letters from Clarence Kopp, Ripon '14, who is teaching in the high school at Vale, Oregon; and Miss Jessie Nye, Washburn '15, who is working on a newspaper at Newton, Kansas. Miss Nye says she will be at the National convention.

J. H. Krenmyre, the National Historian, is planning to be at the National convention, and E. A. Vaughan, the National Vice President, expects to come up from Alabama about that time. John A. Shields, General Secretary, will probably not be able to come. He will be represented, however, by the Assistant Secretary, Roy E. Painter.

PRESIDENT'S REPORT ON FORENSIC AND PUBLICATIONS

Liabilities

Feb. 1915	Five hundred copies of Forensic (49 pp)	\$ 85.75
Feb. 1915	1100 blanks (charter and individual applications)	3.75
Feb. 1915.	200 wrapper	.50
Feb. 1915.	Cut for cover design	1.00
Mar. 1915.	Card catalog forms	8.00
Feb.-March 1915	Postage on Forensic(third class)	6.40
April-May-June 1915	Postage (return of cuts, letters, etc.)	2.16

Total Liabilities \$107.56

Receipts

March 1915	From J. A. Shields, General Secretary-Treasurer	\$ 37.92
March 1915	" Edward R. Roehm, jewelry ad	5.00
March 1915	" Hinds, Noble & Eldridge ad.	5.00
March 1915	" W. E. Lockwood, Redlands chapter dues	6.50
April 1915	" A. J. Martin (subscription)	1.00
May 1915	" J. A. Shields	23.59
June 1915	" W. E. Lockwood	13.25
Aug. 1915	" W. E. Lockwood	2.25
Oct. 1915	" Roy E. Gwin (subscription)	1.00
Dec. 1915	" J. A. Shields	10.50

Total Receipts \$106.01

Disbursements

March 17, 1915	To Citrograph Publishing Co.	\$ 37.92
April 7, 1915	To Citrograph Publishing Co.	15.00
May 27, 1915	To Citrograph Publishing Co.	20.00
July 12, 1915	To Citrograph Publishing Co.	13.25
Aug. 13, 1915	To Citrograph Publishing Co.	2.25
Dec. 10, 1915	To Citrograph Publishing Co.	10.58

Total to Citrograph \$ 99.00

Feb.-March 1915	To Postage on Forensic	\$ 6.40
April-May-June 1915	To Postage	2.16

Total Disbursements \$107.56

Total Receipts \$106.01

Advanced by Editor 1.55 \$107.56

Second Forensic Liabilities

Dec. 1915	Three hundred copies of Forensic	\$ 47.00
Dec. 1915	Mailing envelopes	.50

Total Liability \$ 47.50

Receipts

Jan. 1916	From J. A. Shields	\$ 20.00
Feb. 1916	Roy E. Painter	10.00
Feb. 1916	From A. L. Crookham (subscription)	1.00

Total Receipts \$ 31.00

Disbursements

Jan. 1916	To Redlands Review Co.	\$ 15.00
Feb. 1916	To Redlands Review Co.	13.00

Total to Review Co. \$ 28.00

Feb. 1916	Deposit for second class postage Redlands postoffice...	1.40
March, 1, 1916	Balance on hand	\$ 1.60

Total \$ 31.00

March 1, 1916 Amount due Review Co. on second Forensic 19.50

NOTE—There is enough in the National Treasury to settle for the second Forensic, but not for the present number and issues to come. Of the dues for the coming year only a part of those of the Washburn chapter have come in.

Directory of Pi Kappa Delta

National President—Egbert Ray Nichols, University of Redlands, California.
National Vice President and Chairman of Charter Committee—E. A. Vaughan, Auburn, Alabama.

National Secretary-Treasurer—John A. Shields, 106 North Waiola Avenue, La Grange, Illinois.

Assistant National Secretary-Treasurer—Roy E. Painter, 1305 West St., Topeka, Kansas.

National Historian—J. H. Krenmyre, Tiffin, Iowa.

Member, Charter Committee—P. C. Somerville, Illinois Wesleyan, Bloomington, Illinois.

Member, Charter Committee—Arthur L. Crookham, 401 Baker Apartments, Twenty-first and Irving Streets, Portland, Oregon.

President Kansas State Chapter—Roy E. Gwin, Morrowville, Kansas.

LOCAL CHAPTERS:

California—

University of Redlands—President, Merlin Brown; Secretary, A. D. Jacobsen, Reavis Hall, Redlands, California.

Colorado—

Colorado Agricultural College—Ralph C. Smith, Secretary, Fort Collins, Colorado.

Illinois—

Eureka College—President, Rayborn L. Zerby, Eureka College, Eureka, Illinois; Coach, H. O. Pritchard, Eureka College, Eureka, Illinois.

Illinois Wesleyan—President, Roy A. Ramseyer; Secretary-Treasurer, Howard D. Rhea, Bloomington, Illinois.

Iowa—

Central University—President, J. D. Dodson, Central University, Pella, Iowa.

Highland Park College—President, William Christianson; Secretary, Gerhard Hansen, Des Moines, Iowa.

Iowa Wesleyan—

Kansas—

Kansas State Agricultural College—President, Price H. Wheeler, K. S. A. C., Manhattan, Kansas; Secretary, W. F. Taylor, K. S. A. C., Manhattan, Kansas

Ottawa University—President, Roy Taylor; Secretary Sam Schreiner, Ottawa, Kansas.

Southwestern University—President, Thomas A. Williams; Secretary, Howard White, Winfield, Kansas.

Washburn College—President, A. G. Beattie, 602 West Sixth Street, Topeka, Kansas; Flora O. Harrington, Secretary-Treasurer.

Nebraska—

Nebraska Wesleyan—President, Simeon E. Cozad, University Place, Nebraska.

South Dakota—

South Dakota Wesleyan—President, G. F. Hatch; Coach, E. H. Wilds, Mitchell, South Dakota.

Wisconsin—

Ripon College—Delmar D. Wensink, Secretary, West Hall, Ripon, Wisconsin.