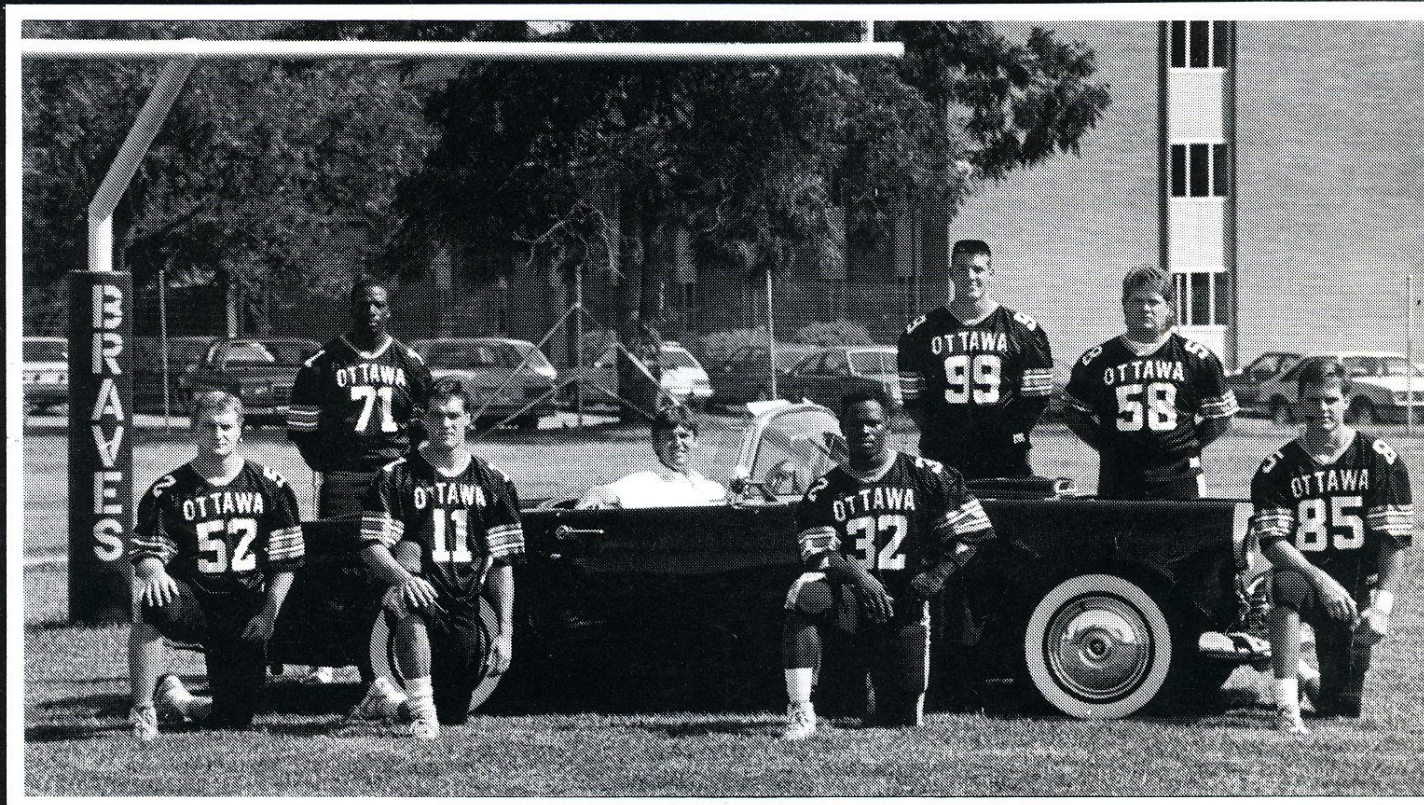


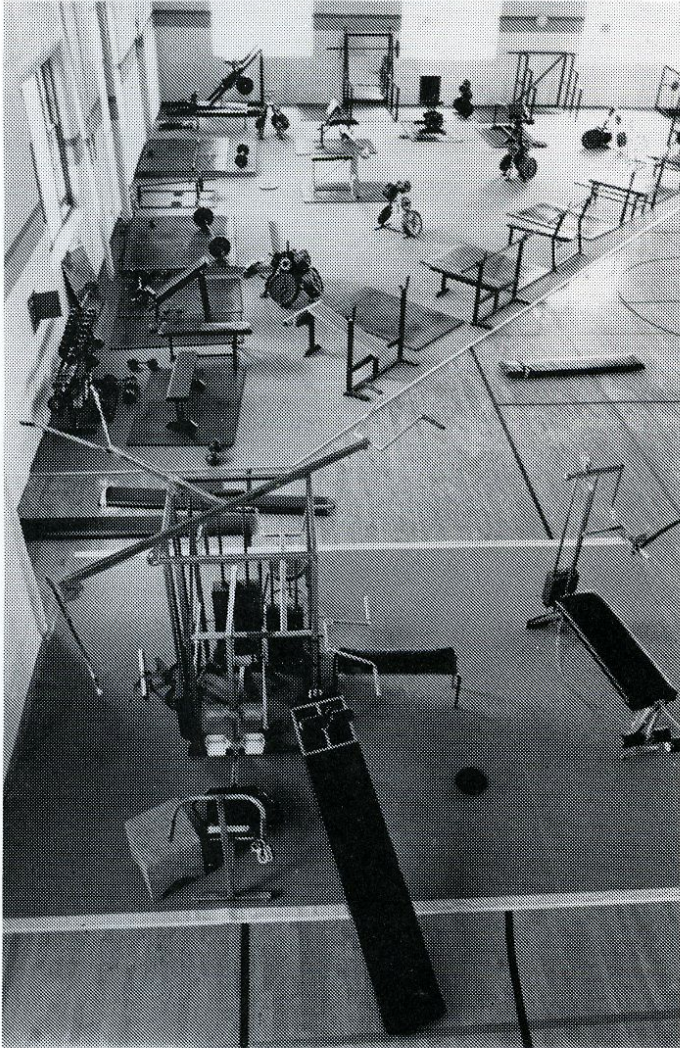
1990 OTTAWA UNIVERSITY BRAVES



moving in the right direction



Wellness Center



WELLNESS CENTER

Work is nearly complete on Phase One of the new Wellness Center which is located on the second floor of the Commons. This first phase of a five-year project, which includes some renovation of the Mabee Center, includes a carpeted area for weightlifting, and new weightlifting and exercise equipment, such as rowing machines, a stair stepper, a Nordic Track cross country skiing machine, an upper cycle, and a variety of exer-cycles. Aerobic dance sessions will also be offered five days a week.

Dr. Corkie Hedlund, Director of the Wellness Center stated, "The Center represents a building, a philosophy, and an attitude for the development of the whole person."

**SUPPORT
OTTAWA UNIVERSITY
ATHLETICS
BY ATTENDING
ATHLETIC EVENTS**



OTTAWA AMOCO FOOD SHOP

Gas, Snacks & More

Located At I-35 And 59 Hwy.



**FIRESTONE
STORES**

102 S. Main Street
Ottawa, Ks. 66067

913-242-2468

BRAVE FACTS
OTTAWA UNIVERSITY

ADDRESS: Tenth and Cedar Streets,
Ottawa, Kansas 66067
ENROLLMENT: 500
MASCOT: Braves
COLORS: Black and Yellow
STADIUM: Cook Field (Capacity 2400)
ATHLETIC DIRECTOR: Don Boulware
FACULTY REP.: Richard Andrews
TEAM TRAINER: Mark Ortiz
TIMERS: Elmer Roth/Richard Andrews
PA ANNOUNCERS: Marty Smith/Gary
Bateman

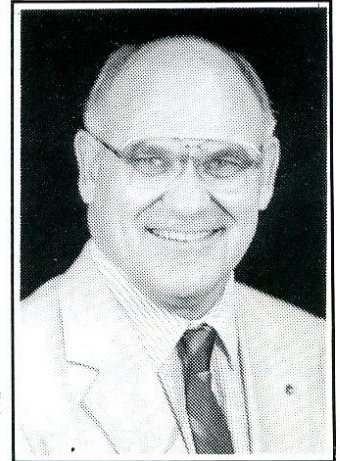
FALL SPORTS MAGAZINE - The Sports information staff would like to extend a very special "thank you" to Gene Ramsey and his staff at Ramsey Printing for their help and assistance in the preparation of this magazine.

OTTAWA UNIVERSITY Fall Sports Magazine

A Publication of the Ottawa University Sports Information Office

Dear Fans:

Ottawa University has a long history of integrating a strong and varied intercollegiate athletic program with a liberal arts academic program. Students further their total campus educational experience by participating in sports activities, either as team members or spectators. It is therefore in this sense of a complete campus life that we also welcome our many friends to join us in our athletic events. We encourage you to visit our programs and activities, participate in as many as you possibly can, and become a part of the O.U. experience. Your presence, whether you are from nearby or afar, is vital to our students' educational experience. We thank you for joining us. Enjoy the game, and return whenever possible!



Dr. Wilbur D. Wheaton
President
Ottawa University

Mission Statement

The purpose of Ottawa University is to provide the highest possible quality education for the development of individual students in the context of its Christian heritage, its liberal arts emphasis, and its educational community of concern and scholarship. The University desires to contribute to the vitality and to the strengthening of local congregations of the Christian community. The University wishes to affect society by educating its students in its Christian environment and by offering educational and cultural opportunities to the broader community.

Founded in 1865 as a mission of the Church, the University continues its commitment to the work of Jesus Christ and to the accomplishment of its task through relatedness to the American Baptist Church, U.S.A. The University serves a student population reflecting the social, economic, and educational diversity of the Mid-west region and such broader clientele as can benefit by its particular emphases. Ottawa University actively seeks for enrollment and graduation, students who can benefit from its climate of learning.

The University strives to participate in the development of the total person so that students may claim their lives' full potential. Ottawa University centers on students and seeks to assist them in the mastery of skills of learning and self-awareness, so that they may be better able to prepare for their careers and to plan for productive lives.

KCAC Opponents 1990

Bethany College

Location: Lindsborg
 Nickname: "Swedes"



Bethel College

Location: North Newton
 Nickname: "Threshers"



Friends University

Location: Wichita
 Nickname: "Falcons"



Kansas Wesleyan

Location: Salina
 Nickname: "Coyotes"



McPherson College

Location: McPherson
 Nickname: "Bulldogs"



St. Mary of the Plains

Location: Dodge City
 Nickname: "Cavaliers" - men
 "Saints" - women



Southwestern College

Location: Winfield
 Nickname: "Moundbuilders"



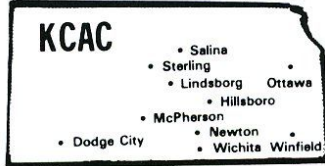
Sterling College

Location: Sterling
 Nickname: "Warriors"



Tabor College

Location: Hillsboro
 Nickname: "Blue Jays"



WOLKEN OIL CO.

—OPEN 24 HOURS—



Gas • Diesel • Snacks • Hot & Cold Sandwiches
 Federal Express • UPS • Photocopies & FAX Services

South of McDonald's, Ottawa 242-8331



SUPERCLEAN UNLEADED GASOLINES

The Clean-Up and Keep Clean Gasolines



1428 S. MAIN - OTTAWA, KS

Double Coupons Everyday!
 (Details In Store)

Store Hours: 7:00 a.m. - 11:00 p.m.

- Postage Stamps • Video Movie Rental
- Money Orders • In-Store Bakery
- Fresh Deli Salads • Senior Citizen Discount
- Full Service Supermarket

Budges Sports Center

Ottawa's Team Sports Headquarters
ALL TYPES OF SPORTSWEAR!

Russell Sweats
 T-Shirts

We Do Lettering!

Nike, L.A. Gear, Converse
 Trophies & Plaques

242-2559

208 S. Main, Ottawa

Media Coverage

MEDIA COVERAGE

Ottawa University sports fans can follow the Braves' action in several ways. You can read daily stories and features as Scott Hollister reports all the action in **The Ottawa Herald**, or for a weekly summary, look to Ottawa's weekly paper - **The Ottawa Times**. The Braves also will be covered by student reports in OU's student newspaper, **The Campus**. Upon completion, the University's own student radio station, **KTJO 88.9-FM**, will carry live play-by-play of all home and away football and basketball games. Reports on OU sports events also are carried on **KOFO-Radio, 1220-AM...OU RADIO**.

Coverage of OU sporting events has increased statewide to include such major newspapers as the **Kansas City Star**, **Topeka Capital-Journal**, **Lawrence Journal-World**, **Wichita Eagle-Beacon**, **Hutchinson News**, and the **Salina Journal**.

SPORTS INFORMATION

The Ottawa University Sports Information Office is a student organization headquartered in Room 107B of the Administration Building. An extension of the Public Relations Office, the Sports Information Staff is responsible for reporting results from OU athletic events to the media and to conference and district headquarters. They also take statistics at various athletic events, issue news releases and feature stories about University athletes and athletic performances to hometown newspapers and radio stations and prepare the programs for OU sporting events.

Sports Information is part of the greater University Relations Office and is under the direct supervision of Marty Smith, director of public relations.

Mike Smith, a junior from Carbondale, Ks., is sports information director, and Jason Fast, a sophomore from Brighton, Colo., is his assistant.



Mike Smith
Sports Information
Director



Jason Fast
Assistant SID



Spence Koehn

UNION BOOKSTORE



MOWBRAY UNION

9:00 a.m. - 4:00 p.m. Monday thru Friday Cathy Peek, manager



OTTAWA, KANSAS

South Bank
1314 S. Main



242-1011

SCORE BIG
with an account at
The Kansas State Bank.
Two locations
to serve you!

Main Bank
236 N. Main



242-3600



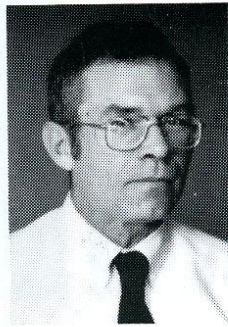
"We're the Hometown People That You Know"

Each Depositor Insured To \$100,000 By FDIC

Athletic Office



DON BOULWARE
ATHLETIC
DIRECTOR



RICHARD ANDREWS
FACULTY
REPRESENTATIVE

ATHLETIC OFFICE

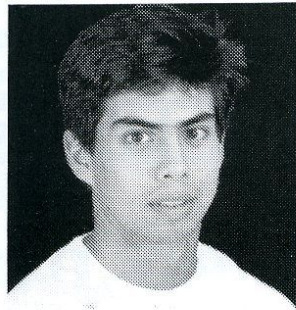
Don Boulware begins his first year as Athletic Director at Ottawa University after first joining the staff as offensive coordinator for football and the head track coach last season.

Boulware graduated from Northeast Missouri State University with a bachelor's degree in physical education.

Richard Andrews, an OU instructor in accounting, is in his fourth year serving as faculty representative. His responsibilities include monitoring the academic achievement of athletes and making certain they meet school, conference and league eligibility requirements.



Kelli Beets
Secretary



Mark Ortiz
Trainer

MORRISON'S CUSTOM MANAGEMENT

Mowbray Union

*Proudly Serving and
Supporting Ottawa University
Since 1983*

Clarence Felzien
Food Service Director



Morrison's Custom Management

CORPORATE HEADQUARTERS

4721 Morrison Drive • P.O. Box 160266 • Mobile, AL 36625 • 205/344-3000

KINGSTON OFFICE

844 Market Street • Kingston, PA 18704 • 717/288-6548

CUSTOM ENVIRONMENTAL SERVICES

844 Market Street • Kingston, PA 18704 • 717/288-7657

Screen & Holler
CUSTOM SCREEN PRINTING

BARB HUMM
415 SOUTH MAIN
OTTAWA, KANSAS
(913) 242-3663

"Remodeled"

ROYAL MANOR MOTEL

- COLOR TV • POOL • HBO
- MEETING ROOM
- DIRECT DIAL PHONES
- FREE LOCAL CALLS
- COMPLIMENTARY COFFEE
- MAJOR CREDIT CARDS • TELECHECK

1641 S. Main

242-4842

ECONO LODGE OF OTTAWA

"SPEND A NIGHT NOT A FORTUNE"

- COLOR TV • HBO
- MEETING ROOM
- TOUCH-TONE PHONES
- FREE LOCAL CALLS
- COMPLIMENTARY COFFEE
- NON-SMOKING ROOMS
- AAA RATED

2331 S. Cedar

1-800-446-9000

242-3400

The NAIA Football Championship

The National Association of Intercollegiate Athletics (NAIA) is a completely autonomous association, currently administering programs of intercollegiate athletics at over 500 fully-accredited colleges and universities of moderate enrollment. The fundamental tenet of the NAIA is that intercollegiate athletics is an integral part of the total educational program of the institution. This belief is strongly reflected in the governing documents, activities and organizational structure of the Association.

HISTORY AND PURPOSE

Established in 1940 as the National Association of Intercollegiate Basketball (NAIB), the NAIA emanated from a "National Small College Basketball Tournament" inaugurated in 1937 in Kansas City, Missouri. The conversion of the NAIB to the NAIA came in 1952 when the organization expanded beyond basketball and added national championship events in golf, outdoor track and field and tennis. Football, cross country, baseball and swimming were added to the championship event calendar in 1956, and wrestling (1958), soccer (1959), bowling (1962-78), gymnastics (1964), indoor track and field (1966), ice hockey (1968) and volleyball (1969-1980) were later additions.

Of major significance to the NAIA, was the establishment of the women's division within the Association on August 1, 1980. The NAIA decision to offer competitive opportunities and championships in women's athletics was passed by the membership following two years of study and proposals by an ad hoc committee on the implementation of a women's division into the NAIA structure. Currently, the Association conducts ten championship event programs for women in the sports of basketball, cross country, gymnastics, indoor track and field, outdoor track and field, softball (fast pitch), soccer, swimming, tennis and volleyball.

The initial purpose of the NAIA — to provide national championship athletic opportunities to institutions below the so-called "major" level — has indeed been well served. The Association clearly outlines its own responsibilities and those of its members: a sound athletics program, administered and controlled by those responsible for the administration of the institution. This means direct supervision in caliber of competition, financing of the program and taking steps to assure that financial assistance is made available only through the institution and under the same general policies as aid to all students. In short, the basic premise is that the athletics program is a basic component of the overall educational process and not an entity part.

ADMINISTRATION

The governing body of the NAIA is the National Executive Committee, composed of 10 persons elected by the membership. The Executive Committee is responsible for establishing the policies and determining the overall direction of the Association. The Executive Committee hires the Executive Director, who conducts the business and day-to-day operation of the National Office headquartered in Kansas City, Missouri.

The District is the basic unit of the NAIA. The Association is organized into 31 geographical districts spread over the 50 states and a part of Canada. Each District is governed by a District Executive Committee, the chief officer of which is the District Chair. The District Executive Committee establishes a program of championship events in various sports and individual/team champions of those district events are qualified to compete in NAIA Area and National Championship competition.

Eligibility rules within the NAIA govern all play in all sports recognized by the Association, not just post-season play. All eligibility guidelines must be adhered to by all members, including those holding dual affiliation with other associations. Certification of eligibility of all NAIA student/athletes is accomplished through a network of individuals which includes the faculty athletic representative of each institution, the District Eligibility Chair and the National Eligibility Committee.

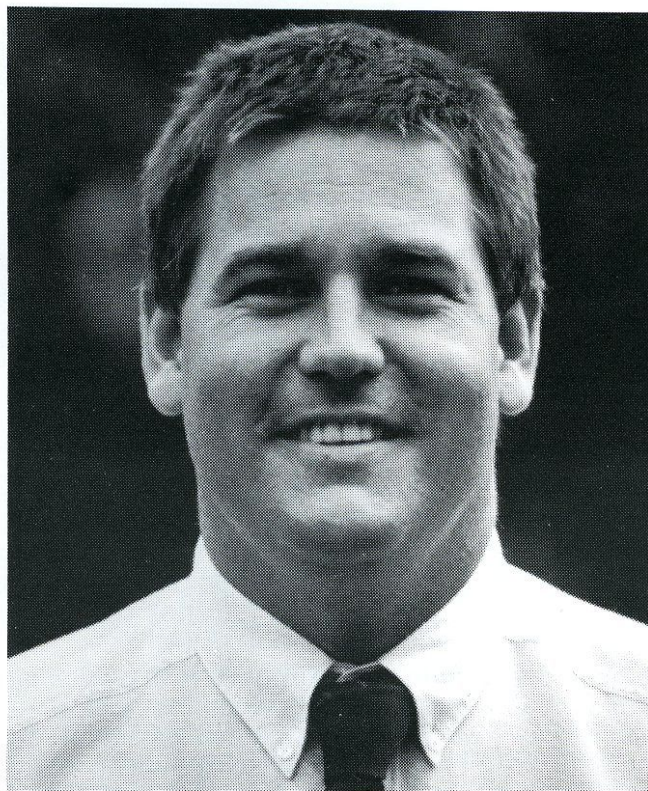
MEMBERSHIP

Any four-year college or university and upper level two-year institution in the United States and Canada which awards the bachelor's degree or equivalent, may hold active NAIA membership. Active member institutions must be fully accredited by an appropriate accrediting agency or commission.

OBLIGATION OR MEMBERSHIP

Member institutions must conduct their intercollegiate athletic programs with the standards of the regulatory Associations in which they hold membership, and the NAIA. They must pay their annual membership dues and be in support of the policies of the NAIA. Where institutional rules and standards are stricter than those of the regulatory group or the NAIA, those rules and standards of the institution are recognized and supported by the NAIA.

Football Coaching Staff



HEAD COACH DAVE DALLAS

COACH DAVE DALLAS

Coach Dave Dallas begins his second year as head football coach at Ottawa University. Last season he compiled a conference record of 3-6 and 3-7 overall. Coach Dallas came to the University in 1989. Previously, he was defensive coordinator at Graceland College in Lamoni, Iowa, where he also served as recruiting coordinator.

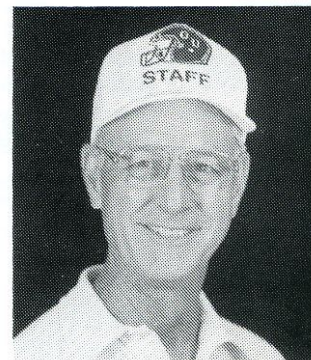
SEASON OUTLOOK

We're real excited about improving the mark of 3-7 from last season. With the coaching staff's first full recruiting year under our belts, we have added some good student/athletes to go along with an outstanding group of returners. The staff will have to deal with 45 new faces in the program this fall added to the 32 returners from last year.

When developing a football program, you can't get it done in one year, you have to build for the future of the program as well as for this season. OU recruiters roped fourteen transfers from other college and junior college programs. We are excited about the new kids who are coming in but just as excited about the foundation that was built by the 32 returners. They have worked hard in the weight room and conditioned in the off season.

We return eight starters on offense and eight starters on defense. Whether or not some of the new kids will or will not be able to come in and beat out those starters, remains to be seen. The one thing for sure is we will be a better football team and a better football program in the '90s.

**Jim Grogan
Assistant Coach**



JIM GROGAN

Coach Grogan graduated from OU in 1953 and is in his 17th year of coaching. Jim has coached receivers and tight ends, and is now back coaching the defensive secondary which he guided for seven years previously. He also is a coach at Ottawa High School. While at OU, Coach Grogan was a four year letterman.

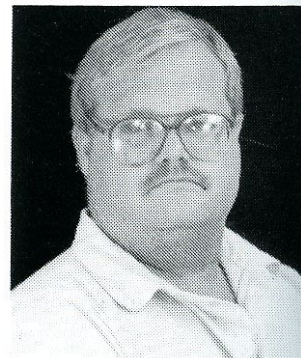


**Don Boulware
Assistant Coach**

DON BOULWARE

Coach Boulware is in his second year as offensive coordinator for the Braves. Don previously coached track and football at Saint Genevieve, Mo. Coach Boulware earned his bachelor's degree in physical education from Northeast Missouri State University.

**William Wille
Assistant Coach**

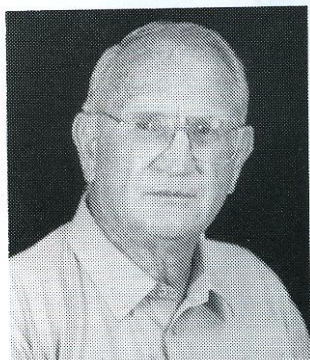


WILLIAM WILLE

Coach Wille will be in his second year as coach of the offensive line. Wille was a graduate assistant at Southern Arkansas University. Wille has a master's degree in guidance and counseling and is also the resident director of Brown Hall.

Football Coaching Staff

Don Kornhaus
Assistant Coach



DON KORNHAUS

Coach Kornhaus is in his second year with the Ottawa football program as coach of the defensive linemen. Before joining the program, Kornhaus coached the Ottawa High School football team for three decades.

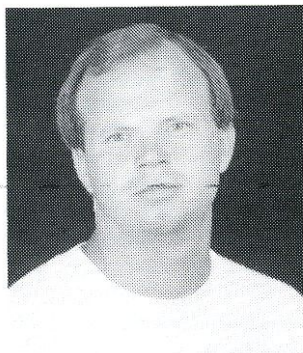
Paul Howe
Assistant Coach



PAUL HOWE

Coach Howe is a graduate from Benedictine College and will assume the role as linebacker coach. Paul's experience came in Sweden where he was a player/coach for the Upsala 86er's. He is currently the Administrator of the Ottawa Retirement Village.

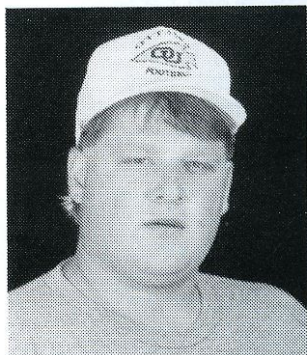
Merle Chesbro
Assistant Coach



MERLE CHESBRO

Coach Chesbro is in his first year as the defensive back coach. Merle previously coached the linebackers at the University of Kansas as graduate assistant for two years. Merle is currently seeking his teaching degree here at OU.

George Christiansen
Assistant Coach



GEORGE CHRISTIANSEN

Coach Christiansen is a 1990 graduate of Ottawa University and is the defensive line coach. George graduated with an education degree. He will be a great asset to the defensive line with being named second team all-conference during his senior campaign.

Sutton's Jewelry

*"We'll Never
Drop the
Ball on
Customer
Service"*



207 S. Main
(913) 242-3723

Sutton's Jewelry

**PRICE
CHOPPER**

The Low Price Leader!

So. 59 Hwy.

OTTAWA

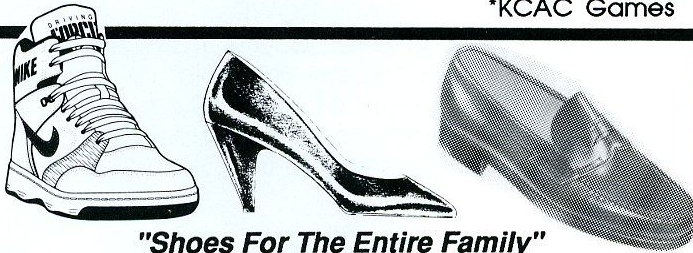
242-6490

Braves Football Roster 1990

1990 FOOTBALL SCHEDULE			
DATE	OPPONENT	PLACE	TIME
*Sept. 8	Sterling College	A	7:00
Sept. 15	Baker University	OHS	7:30
*Sept. 22	Bethany College	A	7:00
*Sept. 29	Friends University (Family Day)	H	1:30
*Oct. 6	Southwestern College	A	1:30
*Oct. 13	Tabor College	A	2:00
*Oct. 20	Kansas Wesleyan (Homecoming)	H	2:00
*Oct. 27	St. Mary of the Plains	H	1:30
*Nov. 3	McPherson College	A	1:30
*Nov. 10	Bethel College	H	1:30

*KCAC Games

NO.	NAME	POS.	WT.	YR.	HOMETOWN
3	Jay McClain	K	210	FR	Festus, Mo.
5	Joe Morris	TB	205	SR	Pahokee, Fla.
6	Ken Franklin	TB	165	FR	Denver, Colo.
7	Todd Hand	QB	190	FR	Colo. Sprgs., Colo.
8	Darell Allen	DB	185	SO	Houston, Tex.
9/25	Billy Proctor	WR	185	FR	Claremore, Okla.
10	Jess Pittman	WR/K	150	FR	Blue Springs, Mo.
11	Mark Berner	WR/P	185	SR	Wamego, Ks.
12	Barry Bronk	QB	185	SO	Arvada, Colo.
13	Derick Burks	DB	150	FR	Peculiar, Mo.
16	Shawn Eggemeyer	DB/P	175	FR	Festus, Mo.
17	Trey Zepeda	SS	215	SO	Inez, Tex.
19	Bobby Thompson	QB	195	SO	Herculaneum, Mo.
20	Greg Alexander	FB	225	JR	Riviera, Ariz.
21	Harold Milton	DB	175	JR	Atlanta, Ga.
22	Matt Jirgens	SS	205	SO	Toronto, Ks.
23	Troy Lewis	DB	170	SO	Quenemo, Ks.
24	Brian McBride	DB	195	SO	Rolla, Mo.
28	John Brooks	DB	150	FR	Aurora, Colo.
30	Jerrold Fredricks	DB	175	FR	Ottawa, Ks.
31	Jerod Swartz	DB/P	175	FR	Granby, Mo.
32	Mario Washington	TB	190	SR	Olathe, Ks.
33	David Boyer	DB	175	SO	Herculaneum, Mo.
34	Scott Neldholt	SS	185	FR	DeSoto, Ks.
35	Shawn Gann	LB	195	JR	El Dorado, Ks.
39	Shane Anthony	FB	235	SO	Bulverde, Tex.
41	Shon Logue	TB	190	FR	Colona, Ill.
42	Matt Cline	DL	210	FR	Olathe, Ks.
43	Chris McClure	DB	210	SR	Lyons, Ks.
44	Klint Ketcher	LB	235	SO	Arlington, Tex.
45	Rich Labahn	DB	185	FR	Woodstock, Ill.
48	Steve Warfield	DB	185	FR	Brookport, Ill.
50	Matt Thompson	LB	225	SO	Arlington, Tex.
51	Russ Caraway	SS	205	SR	Paola, Ks.
52	John "Dodge" Werner	DL	205	SR	Kansas City, Ks.
53	Robert Matherly	DL	245	SR	Crossville, Tenn.
54	Derek Bissit	OL	220	SO	Holton, Ks.
55	Craig Hercher	LB	215	SO	Hillsboro, Mo.
56	Larry Minnifield	LB	225	JR	Scottsdale, Ariz.
57	Mike Kerbs	DB	210	SO	Arlington, Tex.
58	Mark Weaver	OL	245	SR	Baxter Springs, Ks.
59	Billy Reese	DB	200	FR	Herculaneum, Mo.
60	Tim Rinne	OL	225	FR	Union, Mo.
65	Joe Essman	OL	205	FR	Grantville, Ks.
66	John "Mango" Ricciardi	OL	245	JR	Queens Village, N.Y.
70	Justin Crownover	DL	250	SO	Dumas, Tex.
71	Wisdom "Wiz" Battle	DL	260	SR	Mulberry, Fla.
72	Milt Ruble	OL	275	SO	Herculaneum, Mo.
74	Frank Tisby	OL	250	FR	Aurora, Colo.
75	Shane Koranda	OL	210	FR	Gem, Ks.
76	Chris Robinson	OL	285	FR	Springfield, Mo.
77	Brendan May	OL	245	SO	Williamsburg, Ks.
78	Schonn Sudduth	DL	240	FR	Kansas City, Mo.
79	Lorin McCraley	OL	245	SO	Scottsdale, Ariz.
80	Matt Weidl	TE	230	JR	Mesa, Ariz.
81	Marc Thuro	WR	145	FR	Wellsville, Ks.
82	Rex Moore	TE/K	185	FR	Springfield, Mo.
83	Kurt Layton	TE	185	SO	Wellsville, Ks.
84	Jonathon Hilton	TE	200	FR	DeSoto, Ks.
85	Jim Anderson	WR/TE	195	SR	Agenda, Ks.
99	Scott Harris	DL	250	JR	Gardner, Ks.



"Shoes For The Entire Family"
Your Men's & Ladies' SAS Headquarters

Brown's

SHOE FIT COMPANY



218 S. Main

Downtown Ottawa, KS

(913) 242-6111



Franklin
SAVINGS ASSOCIATION

Founded 1889

Ottawa Branch, 700 S. Main
242-2804

HOURS:
LOBBY-

Monday Through Thursday
9:00 a.m.-4:00 p.m.

Friday 9:00 a.m.-5:30 p.m.

DRIVE-UP WINDOW

Monday Through Friday

7:30 a.m.-6:00 p.m.

SATURDAY HOURS:

Drive-Up - 8:00 a.m.-12 Noon

Lobby - 9:00 a.m.-12 Noon



1989 Braves' Standouts

ALL-CONFERENCE SELECTIONS

FIRST TEAM DEFENSE

NO.	NAME	POS.	YR.
7	Clifford Boatwright	DB	GRAD

SECOND TEAM DEFENSE

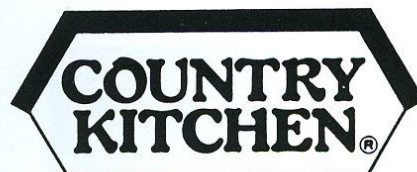
NO.	NAME	POS.	YR.
75	George Christiansen	DL	GRAD
53	Robert Matherly	DL	SR

HONORABLE MENTION

NO.	NAME	POS.	YR.
2	Fred King	WR	SR
15	Brad Basel	QB	GRAD
85	Jim Anderson	TE	SR
11	Mark Berner	WR	SR

THE COUNTRY'S CALLING YOU.

*Breakfast Served
24 Hours*

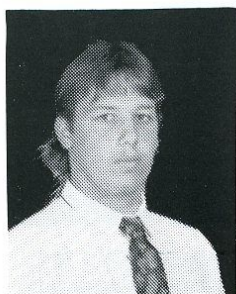


THE COUNTRY'S CALLING YOU.

2227 Princeton Road, Ottawa-242-7757



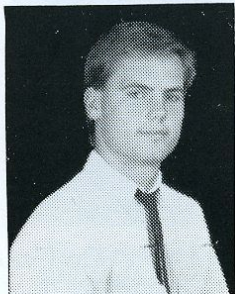
Meet The Braves



Greg Alexander #20
JUNIOR FB
Riviera, Ariz.
Psychology



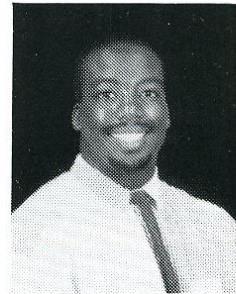
Darrell Allen #8
SOPHOMORE DB
Houston, Tex.
Accounting



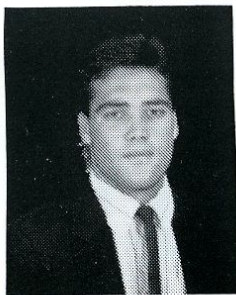
Jim Anderson #85
SENIOR WR/TE
Agenda, Ks.
Biology



Shane Anthony #39
SOPHOMORE FB
Bulverde, Tex.
Undecided



Wisdom "Wiz" Battle #71
SENIOR DL
Mulberry, Fla.
P.E./Recreation



Mark Berner #11
SENIOR WR/P
Wamego, Ks.
Communications



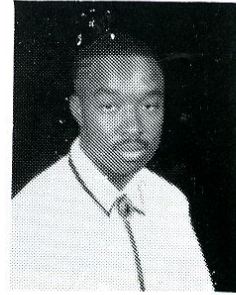
Derek Bissit #54
SOPHOMORE OL
Holton, Ks.
History



David Boyer #33
SOPHOMORE DB
Herculaneum, Mo.
Accounting

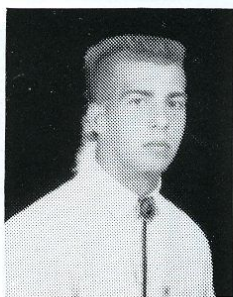


Barry Bronk #12
SOPHOMORE QB
Arvada, Colo.
Computer Science

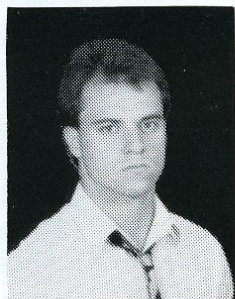


John Brooks #28
FRESHMAN DB
Aurora, Colo.
Pre-Engineering

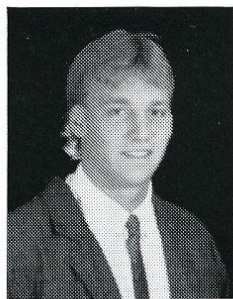
Meet The Braves



Derick Burks #13
FRESHMAN DB
Peculiar, Mo.
Computer Science



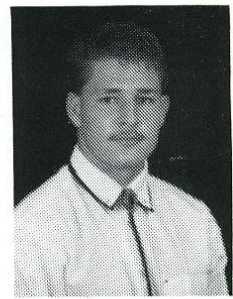
Russ Caraway #51
SENIOR SS
Paola, Ks.
Business



Matt Cline #42
FRESHMAN DL
Olathe, Ks.
Sociology



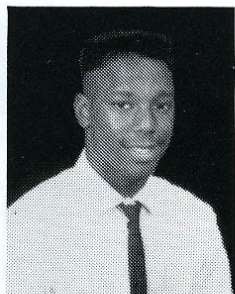
Justin Crownover #70
SOPHOMORE DL
Dumas, Tex.
Business



Shawn Eggemeyer #
FRESHMAN DB/P
Festus, Mo.
Undecided



Joe Essman #65
FRESHMAN OL
Grantville, Ks.
Sports Medicine



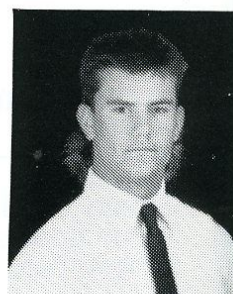
Ken Franklin #6
FRESHMAN TB
Denver, Colo.
Computer Programing



Jerrod Fredricks #30
FRESHMAN DB
Ottawa, Ks.
Business



Shawn Gann #35
JUNIOR LB
El Dorado, Ks.
Business



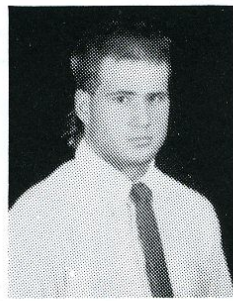
Todd Hand #7
FRESHMAN QB
Colo. Sprgs., Colo.
Pre-Engineering



Scott Harris #99
JUNIOR DL
Gardner, Ks.
Business Admin.



Craig Hercher #55
SOPHOMORE LB
Hillsboro, Mo.
Vet Science



Jonathon Hilton #84
FRESHMAN TE
DeSoto, Ks.
Undecided



Matt Jirgens #22
SOPHOMORE SS
Toronto, Ks.
Hlstory Ed



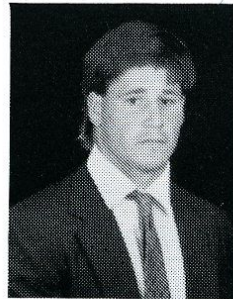
Mike Kerbs #57
SOPHOMORE DB
Arlington, Tex.
Business Admin.



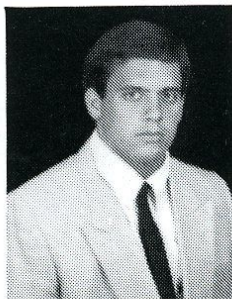
Klint Ketcher #44
SOPHOMORE LB
Arlington, Tex.
Physical Ed



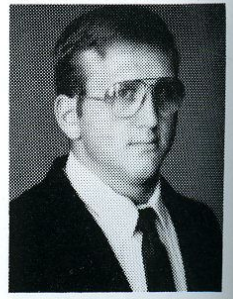
Shane Koranda #75
FRESHMAN OL
Gem, Ks.
Math



Rich Labahn #45
FRESHMAN DB
Woodstock, Ill.
Human Services



Kurt Layton #83
SOPHOMORE TE
Wellsville, Ks.
Human Services

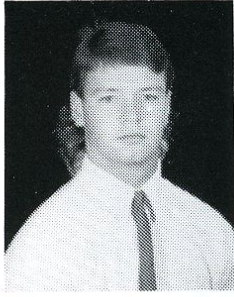


Robert Matherly #53
SENIOR DL
Crossville, Tenn.
Business

Meet The Braves



Brendan May #77
SOPHOMORE OL
Williamsburg, Ks.
Biology



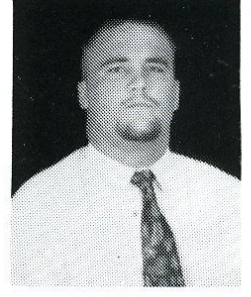
Brian McBride #24
SOPHOMORE DB
Rolla, Mo.
Human Services



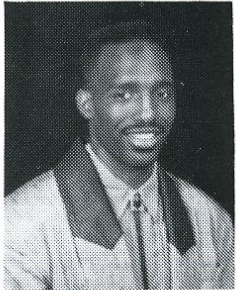
Jay McClain #3
FRESHMAN K
Festus, Mo.
Undecided



Chris McClure #43
SENIOR DB
Lyons, Ks.
Accounting



Lorin McCraley #79
SOPHOMORE OL
Scottsdale, Ariz.
Theater/Education



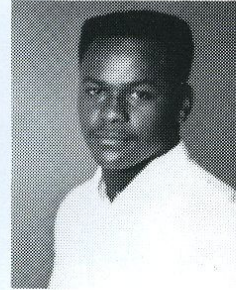
Harold Milton #21
JUNIOR DB
Atlanta, Ga.
Business Admin.



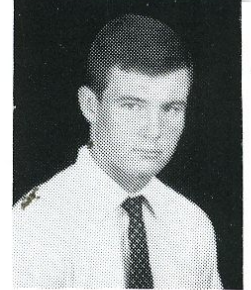
Larry Minnifield #56
JUNIOR LB
Scottsdale, Ariz.
Psychology



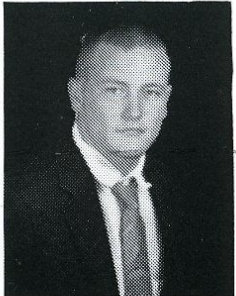
Rex Moore #82
FRESHMAN TE/K
Springfield, Mo.
Physical Ed



Joe Morris #5
SENIOR TB
Pahokee, Fla.
Physical Ed



Scott Neldholt #34
FRESHMAN SS
DeSoto, Ks.
Undecided



Jess Pittman #10
FRESHMAN WR/K
Blue Sprgs., Mo.
Undecided



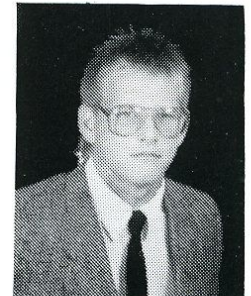
Billy Proctor #9/25
FRESHMAN WR
Claremore, Okla.
Business Admin.



Billy Reese #59
FRESHMAN DB
Herculaneum, Mo.
Undecided



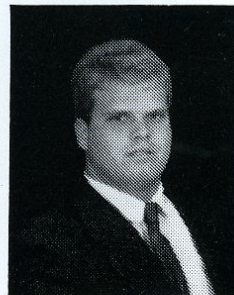
John "Mongo" Ricciardi #66
JUNIOR OL
Queens Village, N.Y.
Communications



Tim Rinne #60
FRESHMAN OL
Union, Mo.
Undecided

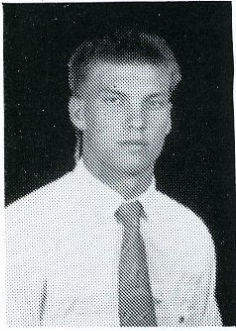


Milt Ruble #72
SOPHOMORE OL
Herculaneum, Mo.
Human Services



Schonn Sudduth #78
FRESHMAN DL
Kansas City, Mo.
Communications

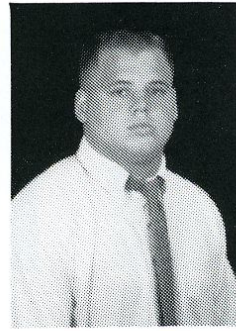
Meet The Braves



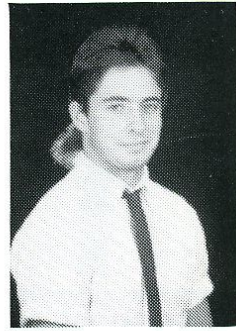
Jerod Swartz #31
FRESHMAN DB/P
Granby, Mo.
Undecided



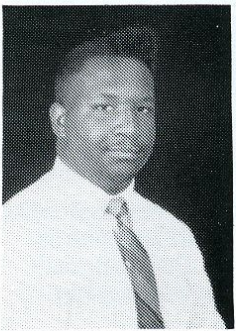
Bobby Thompson #19
SOPHOMORE QB
Herculaneum, Mo.
Biology



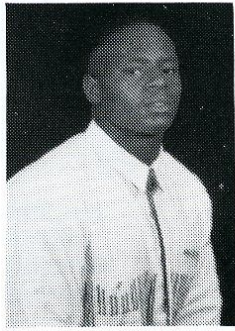
Matt Thompson #50
SOPHOMORE LB
Arlington, Tex.
Physical Ed



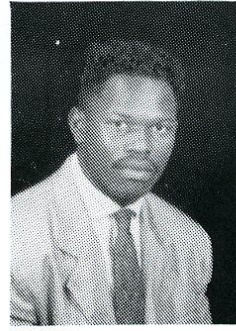
Marc Thuro #81
FRESHMAN WR
Wellsville, Ks.
Pre-Engineering



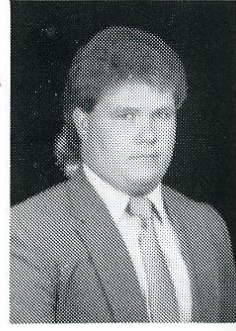
Frank Tisby #74
FRESHMAN OL
Aurora, Colo.
Physical Therapy



Steve Warfield #48
FRESHMAN DB
Brookport, Ill.
Undecided



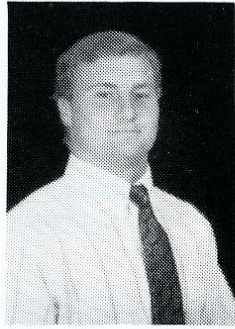
Marlo Washington #32
SENIOR TB
Olathe, Ks.
Accounting



Mark Weaver #58
SENIOR OL
Baxter Springs, Ks.
Music/P.E.



Matt Weidl #80
JUNIOR TE
Mesa, Ariz.
Human Services



John "Dodge" Werner #52
SENIOR DL
Kansas City, Ks.
Accounting



Trey Zepeda #17
SOPHOMORE SS
Inez, Tex.
Communication

NOT PICTURED

Troy Lewis #23
SOPHOMORE DB
Quenemo, Ks.
Undecided

Shon Logue #41
FRESHMAN TB
Moline, Ill.
Undecided

Chris Robinson #76
FRESHMAN OL
Springfield, Mo.
Undecided

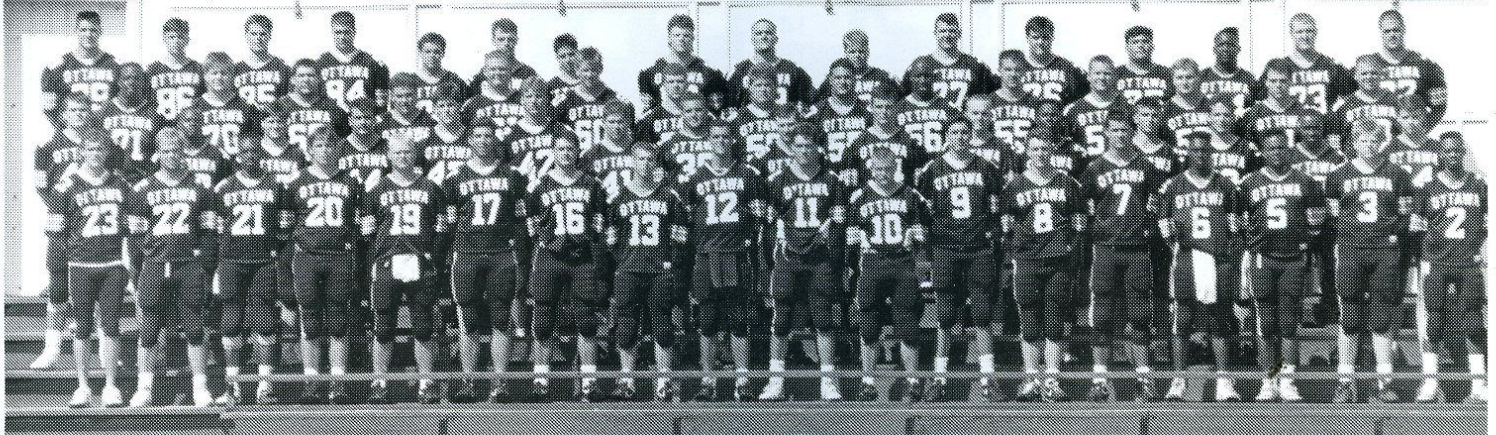
Head Coach: Dave Dallas
Offensive Coordinator: Don Boulware
Offensive Line Coach: William Wille
Receiver Coach & Special Teams Coordinator: Jim Grogan
Linebacker Coach: Paul Howe
Defensive Line Coach: Don Kornhaus
Defensive Back Coach: Merle Chesbro
Defensive Line Coach: George Christiansen

Head Trainer: Mark Ortiz
Student Trainer: Susie Watkins
Equipment Manager: Sean Buckeridge

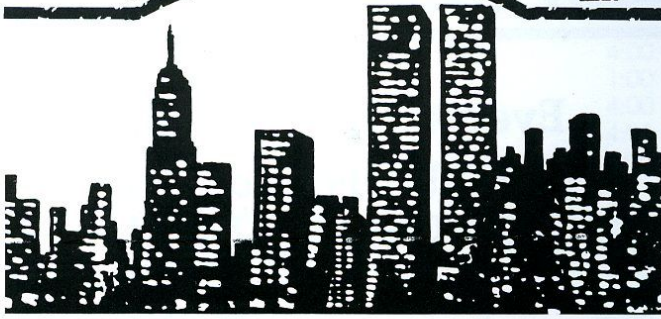
Team Captains: Jim Anderson & John "Dodge" Werner

1990 Football Braves

Home of the *Braves*



NEW YORK DELI



AND BARBQUE

125 E. 2nd, Ottawa

242-DELI

- *Barbecue Dinners*
- *Steaks*
- *Italian Specialties*
- *Deli Food*
- *Frozen Yogurt*

OPEN EVENINGS
DINE IN—CARRY OUT

TRAV COMM

435 S. MAIN, OTTAWA

*Call Us Today
&
Start Making Your
Travel Plans!*

(913) 242-7020

Monday Thru Friday 8-6
Saturday 9-1

1989 Statistics

TEAM STATISTICS 1989

OPPONENT		OTTAWA
Bethany College	61 (A)	22
Friends University	14 (A)	28
McPherson College	7 (H)	12
St. Mary of the Plains	7 (A)	0
Baker University	37 (H)	7
Tabor College	25 (A)	16
Southwestern College	28 (H)	14
Sterling College	17 (A)	16
Bethel College	21 (H)	27
Kansas Wesleyan	29 (H)	21
OVERALL RECORD 1989: 3-7		
KCAC RECORD 1989: 3-6		

TEAM STATISTICS 1989

CATEGORY	OU	OPP
Points Scored	163	246
First Downs	154	193
Rushes/Net Yards	381/1178	517/2354
Passing Yards	1664	1496
Passes Completed	131	100
Passes Attempted/Had Int.	293/11	231/11
Total Plays/Yards	664/2843	639/3850
Punts/Average	77/32.1	63/35.7
Fumbles/Lost	25/20	25/15
Penalties/Yards	76/618	106/974

OFFENSIVE STATISTICS

RUSHING	ATT	NET	TD	AVG.
Paul Evans	102	329	1	3.2
Cebon Robinson	86	304	1	3.5
Bryon George	77	279	2	3.6

PASSING	COMP.	ATT.	PER.	INT.	YDS.	TD
Brad Basel	76	168	45.2	7	951	2
Barry Bronk	53	118	44.9	3	685	5
Bobby Thompson	2	7	28.5	1	28	1

RECEIVING	NO.	YDS.	TD	AVG
Jim Anderson	31	378	1	12.2
Mark Berner	31	427	2	13.8
Fred King	19	330	4	17.3

"When you need to make
a good impression...."

CALL
**RAMSEY
PRINTING
CO.**

602 N. Main, Ottawa, KS 66067
913-242-3244

**OTTAWA
COUNTRY MART**

Everything You Need
Can Be Found Here
At Country Mart!

 MONEY ORDERS

 TOP QUALITY

 POSTAGE STAMPS

 VIDEO

 LOW PRICES

 BAKERY

 FULL SERVICE

 DELI

STORE HOURS:
Mon. - Sat. 8 a.m. - 9 p.m.
Sunday 9 a.m. - 8 p.m.
Phone 242-4646

Hwy. 59 South, next to Wal-Mart

1990 Soccer Braves



DATE	1990 SOCCER SCHEDULE OPPONENT	PLACE	TIME
Aug. 31	Northeastern Missouri (JV)	A	6:00
Sept. 8	Graceland College	A	2:00
Sept. 12	William Jewell College	H	4:00
*Sept. 15	Bethel College	A	1:00
*Sept. 18	Tabor College	H	4:00
*Sept. 22	Sterling College	H	1:00
Sept. 24	Baker University	H	4:00
Sept. 26	Bartlesville Wesleyan	H	4:00
*Sept. 29	St. Mary of the Plains (Family Day)	H	4:00
Oct. 2	Univ. of Missouri KC	H	4:00
*Oct. 4	Friends University	A	7:00
*Oct. 6	Bethel College	H	1:00
*Oct. 12	Tabor College	A	4:00
*Oct. 13	Sterling College	A	1:00
Oct. 16	Kansas Newman College	A	3:30
*Oct. 20	Friends University (Homecoming)	H	12:00
Oct. 25	Benedictine College	H	3:30
*Oct. 27	St. Mary of the Plains	A	12:00

*KCAC Games

Lamb-Roberts Funeral Home

PEOPLE YOU CAN RELY ON...
TODAY AND TOMORROW

325 S. Hickory Ottawa, Kansas
242-3550

*Ronn and Paula Heise
Bob and Elaine Roberts*

ALLEGRE PHARMACY



304 S. MAIN 242-3092

RUSSELL STOVER CANDIES, FINE SELECTION
OF COSMETICS AND FRAGRANCES
CRUTCH AND WHEELCHAIR RENTAL
FREE DELIVERY, SENIOR CITIZEN DISCOUNT

Bill Allegre, Owner

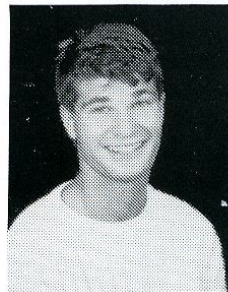
1990 Lady Braves



1990 VOLLEYBALL SCHEDULE

DATE	OPPONENT	PLACE	TIME
Sept. 5	Haskell Indian J.C.	A	4:30
Sept. 7	Baker Tournament	A	TBA
Sept. 8	Baker Tournament	A	TBA
Sept. 11	St. Mary of the Plains	H	6:00
Sept. 13	Pittsburg State	A	6:00
Sept. 14	Avila Tournament	A	TBA
Sept. 15	Avila Tournament	A	TBA
Sept. 18	Park/Mo. Valley	A	7:00
Sept. 20	Mid America/Rockhurst	A	6:00
Sept. 24	Baker/Pittsburg State	H	6:00
*Sept. 26	Sterling/McPherson/Friends	A	6:00
*Sept. 28	St. Mary of the Plains/ Tabor (Parents Night)	H	6:00
*Oct. 2	Kansas Wesleyan/Bethel	A	6:00
*Oct. 4	Bethany/Southwestern	H	6:00
*Oct. 6	Benedictine/Tabor	A	1:00
Oct. 9	Mid America	H	6:00
*Oct. 12	St. Mary's/Tabor	A	6:00
*Oct. 16	McPherson/Sterling/Friends	A	6:00
*Oct. 18	Bethel/Kansas Wesleyan	A	6:00
*Oct. 23	Southwestern/Bethany	A	6:00
Oct. 25	Benedictine/Avila	H	6:00
Nov. 23	District 10		

*KCAC



Scott Powell
Manager

CREASON-TAWNEY

Chevrolet - Geo - Oldsmobile

Pontiac - Buick - Cadillac

"OTTAWA'S GM CENTER"

Hwys. K-68 & I-35 • Ottawa, KS 66067

Phone (913) 242-5050 • K.C. Phone 432-1363

Meet The Cheerleaders

1990-91 OU CHEERLEADING SQUAD



Ida Walker
FRESHMAN
Pallsade, Colo.
Elementary Education

Michele Duffey
SENIOR
Wellsville, Ks.
Business

Kathy Anspaugh
JUNIOR
Lyndon, Ks.
Elementary Education

Traci Rohrbough
FRESHMAN
Scott City, Ks.
Human Services

NOT PICTURED
Tiffany Finney
JUNIOR
Kansas City, Mo.
Elementary Education

Christine Thuro
JUNIOR
Wellsville, Ks.
Education

Leticia Weber
FRESHMAN
Parsons, Ks.
Undecided

Toni Manna
SOPHOMORE
Pomona, Ks.
Business

MIKE'S

SPORTING GOODS

Mike Rogers
Garnett, KS 448-6500

Agler & Gaeddert
C H A R T E R E D

Certified Public Accountants

"THE TEAM THAT WORKS FOR YOU"

234½ S. Main - P.O. Box B
Ottawa, Ks. 66067
913-242-3170

Peoples

National Bank & Trust

MEMBER FDIC

- **Checking**
- **Safe Deposit Boxes**
- **Auto Loans**
- **Savings**
- **Personal Loans**
- **Cashiers Check**
- **24 Hour Teller**



5th & Main

15th & Main

913-242-2900

Ottawa, Kansas