

Texas Welcomes You to the 1971 National

The Panhandle's largest city is Amarillo (pop. 175,844), from a Spanish word meaning "yellow." It has one of the world's largest livestock auctions and one of the very few city zoos left with free admission. About 30 miles southeast of the city is Texas' largest state park, Palo Duro Canyon. There the banal tableland is suddenly split and tumbles 1,000 feet in a riot of color. On the canyon floor are campsites and an amphi-theatre for summer productions. At Lubbock is the Texas Tech University campus, largest in the world.

cultural list. Austin
hen F. Austin. The
itol is the country's
University of Texas
t estimates. Austin
ts No. 1 Longhorn

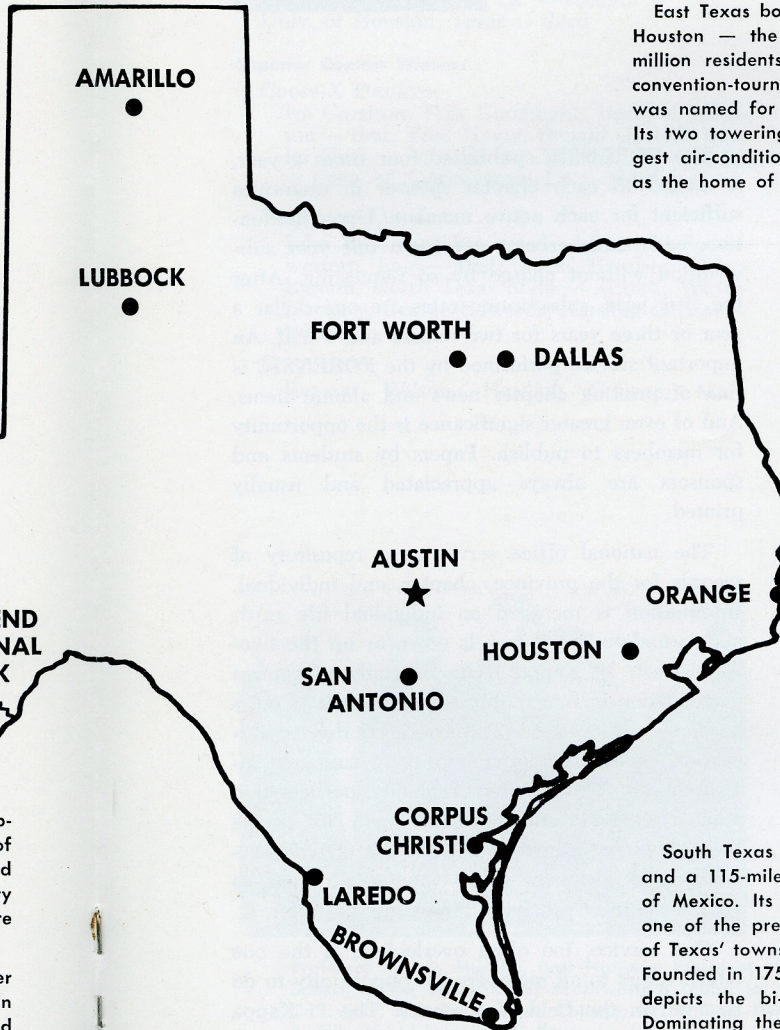
led by Will Rogers
here (others were
Alamo, the San
and the Institute of

EL PASO

BIG BEND
NATIONAL
PARK

fun city, El Paso, with a pop-
with its sister Juarez, largest of
s a pleasant dry climate and
ng and bullfights. Temporary
than telling where you were

along the Rio Grande River
with desert views, mountain
ved roads, lectured tours and
can see mule deer, javelina,
sheep in their natural habitat.



East Texas boasts the state's two huge metropolitan areas. One is Houston — the sixth largest city in the nation with almost two million residents. (The city's university will host the 1971 national convention-tournament.) Founded in 1836 by two brothers, Houston was named for General Sam Houston of Texas independence fame. Its two towering notes of today are the Astrodome — world's biggest air-conditioned room stretching for 9.5 acres — and its status as the home of the moon-landing astronauts.

The other metropolitan area is Dallas-Fort Worth, where more than two million people live. Along with freeways, symphonies and million dollar companies, the area has Six Flags Over Texas. Lying midway between the two cities, the famous amusement park lets you enjoy 75 rides and displays for a single fee. Six Flags Over Texas tells the state's history under Spain, France, Mexico, the Republic of Texas, the Confederacy and now the United States of America.

South Texas features plentiful citrus available even to the natives and a 115-mile uncrowded beach — Padre Island — along the Gulf of Mexico. Its big city is Corpus Christi with 286,104 persons and one of the prettiest shorelines in the world. One of the best-known of Texas' towns is Laredo, the nation's major entry point into Mexico. Founded in 1755 and ranking among the state's oldest cities, Laredo depicts the bi-cultural and bi-lingual atmosphere of south Texas. Dominating the area in many ways is the King Ranch, an 823,000 acre spread. It has produced the famous Santa Gertrudis breed of cattle and two Kentucky Derby winning thoroughbreds. Its wealth has been declared uncountable.

The Secretary's Message

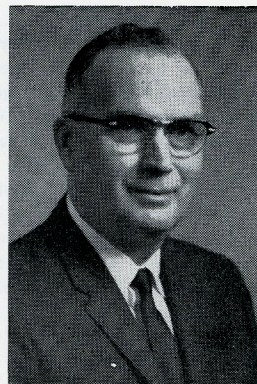
Before you receive the next issue of the *Forensic*, late in October, the annual Fall letter to chapter sponsors will be mailed. This letter includes the form for listing all active members, the officers, sponsored tournaments, etc. Also included on this form is a place to request supplies which will be needed by the chapter throughout the year. An additional sheet lists those materials which are available from the national office. All supplies which are essential for carrying on routine operation of the local chapter are furnished without cost.

This is a lead-in to the subject of *service*. Although Pi Kappa Delta is not officially listed as a service organization, it is my belief that service must be an integral function of any worthwhile organized group. Also, I believe service is a two-way street. First, I would like to review some of the services which the national office is obligated to perform for local chapters and for individual members.

As previously mentioned, essential items are furnished without cost to members except through payment of the membership fee. These include membership forms A and B, information brochures, history of Pi Kappa Delta, key order form, initiation rituals, pledge materials, constitutions and copies of the *Forensic* for each active member. In addition, place cards for the annual banquet, calendar cards, mats for the key for printing stationery are also free. Chapters are requested to order enough of the above for *one* year. The excess becomes outdated or lost.

Items supplied at cost are membership certificates, decals, initiation key and triangle, and the key which comes in three sizes and thirty different jewel combinations depending upon the earned degree and order. There was insufficient demand for the framed certificates as advertised in the October mailing so they will not be available. The standard certificates, suitable for framing, which we have supplied at cost (25¢) for several years may still be ordered. For Province Conventions, the national office will order medals and certificates and furnish at cost.

Larry Norton



The *FORENSIC*, published four times a year, is mailed to each chapter sponsor in quantities sufficient for each active member. Upon graduation, each member may receive a one year subscription without charge by so requesting. After the first year, subscription rates are one dollar a year or three years for two dollars and a half. An important service performed by the *FORENSIC* is that of printing chapter news and alumni items. And of even greater significance is the opportunity for members to publish. Papers by students and sponsors are always appreciated and usually printed.

The national office serves as a repository of records for the province, chapter, and individual. Information is recorded on individual file cards and is updated as it travels down or up the two-way street. Pi Kappa Delta officially recognizes participation in five speech events as well as one's academic achievement. The events are debate, discussion, oratory, extempore speaking, and oral interpretation. Three years of quality participation and an academic ranking in the upper 35% of the class earns the award of highest distinction. Recognizing a members achievement from year to year is the most satisfying service we can offer.

One service, too often overlooked, is the one which offers to all members the opportunity to do research in the field of forensics. The Pi Kappa Delta Committee on Public Relations and Research encourages you to assist with studies in the speech activity areas. The Committee is always willing to assist any member who has the time and desire to add to our limited number of studies in the field of forensics. An organization can best serve you, if you serve it.

Reporting In

Bi-Province of the Lower Mississippi and the Southeast

The Bi-Province has just concluded a most successful Convention-Tournament held at the University of Southwestern Louisiana in Lafayette, March 27 and 28.

Sweepstakes Winners

Harding College, Arkansas — first
Univ. of Southwestern La. — second
Univ. of Houston, Texas — third

Superior Contest Winners

CROSS-X DEBATE:

Ira Garrison, Tom Goodnight, Univ. of Houston — first; Fred Hayes, Ronald Garrett, Baylor Univ. — second; Don Hooton, Joe Oelkers — Univ. of Southwestern La. — third.

STANDARD DEBATE:

John Ray, Paul Broussard — Univ. of Southwestern La. — first; Susie Hendrix, Diana Bynum, North Texas State — second; Wayne Dockery, George Edwards, Harding College — third.

DISCUSSION:

Reagon Wilson, Harding College; Mary

Hughes, Univ. of Houston; Richard Darnell, East New Mexico Univ.

ORATORY:

Nancy Marcantel, Univ. of Southwestern La. — first; Frank Follis, Stephen F. Austin Univ. — second; Ed Roy, Univ. of Southwestern La. — third.

ORAL INTERP:

Pat Garner, Harding College; Chuck Abbott, Northeast La. State College; Connie Cockrell, McMurray College; Karen Hall, Texas A & I.

EXTEMP:

Ira Garrison, Univ. of Houston; John Ray, Univ. of Southwestern La.; Joe Oelkers, Univ. of Southwestern La.; Stan Pfeiffer, Stephen F. Austin Univ.

The Province of the Lower Mississippi elected the following officers to serve for the 1970-'72 biennium: Governor E. R. Minchew, Louisiana Polytechnic Institute; Lt. Gov. Barbara Norman, Central State College, Oklahoma; Sec.-Treas. Mary Alice Baker, Lamar State College of Technology, Texas.



Professor Roy D. Murphy, Past National President of Pi Kappa Delta and Head of the Department of Speech at the University of Southwestern Louisiana, the host school; Dr. E. R. Minchew, Mississippi, Dr. C. L. Farr, East Texas State College; Dr. William DeMougeot, North Texas State University; Dr. Carroll B. Ellis, David Lipscomb College.



Contest Winners: (Front Row) Joe Oelkers, University of Southwestern La., Second place sweepstakes; Susie Hendrix, North Texas State Univ., Second place standard debate; Patty Edwards, Harding College, First place over-all sweepstakes; Nancy Marcantel, University of Southwestern La., First place in oratory; John Ray, University of Southwestern La., First place in standard debate; Reagon Wilson, Harding College, First place in discussion; (Back Row) Tom Goodnight, University of Houston, First place in cross-examination debate; Diana Bynum, North Texas State Univ., Second place in standard debate; Ira Garrison, University of Houston, First place in extemporaneous speaking; Pat Garner, Harding College, First place interpretation.

Province of the Northeast

Clarion State College was first among 17 schools in sweepstakes competition in the Province of the Northeast Tournament and Convention, held at Southern Connecticut State College on April 9-11, 1970. Towson State College was second and Central Connecticut State College was third. 85 contestants and coaches were in attendance; Past Governor William Teufel of Grove City College was a special guest.

Clarion also took first and second-place honors in varsity debate, while Southern Connecticut State College was third. Betty Hufford and Karla Jantsch, from two separate Clarion teams, were first and second varsity speakers, while Bob Francesconi of Southern Connecticut was third.

Towson State College was the only undefeated team in novice debate, while Bridgewater State College was second with 5-1. Third place went to the University of Maine, the highest 4-2 team. Al Clasing of Towson was top novice speaker, followed by Mark Ayotte of Maine and Brenda Knelly of Bloomsburg.

Jane Elmes of Bloomsburg was first in discussion, followed by Pat Moon of Towson, Karl Kramer of Bloomsburg, Karla Jantsch of Clarion, and Jay Hadley of Muhlenberg.

Contest Winners

EXTEMPORANEOUS SPEAKING

Ron DeAbreu, Towson; Karl Kramer, Bloomsburg; Frank Lemire, Cent. Conn.

ORATORY

Ed Verlander, Cent. Conn.; Karl Kramer, Bloomsburg; Mary Galvin, South. Conn.

ORAL INTERPRETATION

Pat Moon, Towson; Karen Mather, Bridgewater; Mary Galvin, Southern Conn.

AFTER DINNER

Nancy Perlman, Southern Conn.; Richard Thompson, Lock Haven; Irene Brzostek, Central Conn.

Special congratulations to Irene Brzostek of Central Connecticut, Karl Kramer of Bloomsburg, and to Mary Galvin and Nancy Perlman of Southern Connecticut for being finalists in two events.

California State College, East Stroudsburg State College, Mansfield State College, Norwich University, Thiel College, and West Chester State College were also in competition.

Governor Seth C. Hawkins was host for the convention, and worked in the control room along with Mrs. Phyllis Bosley of Towson and Mr. Charles Bromberg of Lock Haven.

Prof. Robert Cowles of California State College becomes governor for the coming biennium. Serving with him will be Mrs. Phyllis Bosley of Towson as lieutenant governor and Mrs. Carolyn Keefe of West Chester as secretary-treasurer.

Province of the Northwest

Stagecoach Inn, West Yellowstone, Montana

APRIL 8-11, 1970

NEWLY ELECTED OFFICERS (installed at Saturday luncheon April 11:

Governor — Larry K. Hannah, Eastern Montana State College, Billings, Montana

Lt.-Governor — Craig Singletary, Linfield College, McMinnville, Oregon

Secretary-Treasurer — Larry Kraft, Eastern Washington State College

Student Lt.-Governor — Sam Torvend, Pacific Lutheran Univ., Tacoma, Washington

SPECIAL AWARD to Prof. R. D. "Hap" Mahaffey, Past National President and Past Province Governor. Award was in form of plaque and certificates signed by the students in attendance — in appreciation for Dr. Mahaffey's dedicated service to Pi Kappa Delta and in recognition of his retirement from Linfield College.

THREE BUSINESS MEETINGS HELD plus Friday banquet and Saturday awards luncheon. Friday banquet highlighted by comments from Prof. Ted Karl, Pacific Lutheran Univ., Immediate Past Nat'l President.

EIGHTEEN OF TWENTY THREE Chapters in attendance plus Oregon College of Education (applying for membership) and Pacific University

(guest school). 141 students and faculty sponsors attended.

Superior Contest Winners

SENIOR ORATORY

1st Place — Cathy Collins, Pacific Lutheran University (12A2)

2nd Place — John Meyers, College of Great Falls (6A2)

JUNIOR ORATORY

1st Place — Bill Bailey, Linfield College (7B1)

2nd Place — Kathleen Doyle, Carroll College (4B1)

SENIOR EXTEMP.

1st Place — Mary Courtney, Linfield College (7A1)

2nd Place — David Lee, Whitworth College (11A1)

JUNIOR EXTEMP.

1st Place — Patty Hastings, Linfield College (7B4)

2nd Place — Mike Lunde, Southern Oregon College (9A2)

SENIOR INTERP.

1st. Place — Bob Withycombe, Oregon College of Education (16A3)

2nd Place — Cathy Collins, Pacific Lutheran Univ. (12A2)

JUNIOR INTERP.

1st. Place — Brent Jones, Oregon College of Education (16B3)

2nd Place — 7B1 Bill Bailey, Linfield College

Debate Results

SENIOR DEBATE FIRST PLACE

Mike Wallmark and Mike Fitzgerald, Lewis & Clark College (8A1) 6-0 record

SENIOR DEBATE SECOND PLACE

Bert Terrant and Bob Breen, Montana State Univ. (3A1) 5-1 record

SENIOR DEBATE THIRD PLACE

Tom Schmalz and Jan Hanson, Montana State Univ. (3A3) 5-1 record

JUNIOR DEBATE FIRST PLACE

Wayne Holt and Kathy Clark, Whitman College, (14B5) 6-0 record

JUNIOR DEBATE SECOND PLACE

John Albert and Eric Knutson, Lewis and Clark College (8B1) 5-1 record

JUNIOR DEBATE THIRD PLACE

Cathy Stanford and Steve Wetzel, Idaho State University (1B1) 5-1 record

Bi-Province of the Upper Mississippi and the Illinois

Wisconsin State University—Lacrosse was host to the Bi-Province held April 2-4. Jack Starr of WSU—LaCrosse and the Host Province of the Upper Mississippi presented the Sweepstakes awards.

Sweepstakes Winners

Bradley University, Illinois
Macalaster College, Minnesota
Illinois Wesleyan University, Illinois

Contest Winners

DEBATE:

Bradley University — first
Macalaster College — second
Southern Illinois Univ. Carbondale — third

EXTEMP:

Roger Straesaw, Macalaster College — first
Eric Arnold, Bradley University — second
Joe Kendhammer, WSU—LaCrosse — third

ORATORY:

Lemoyne Baquet, Ripon College — first
Pat Cox, Illinois Wesleyan Univ. — second
Cyndy Sasko, Southern Illinois Univ., Carbondale — third

DISCUSSION:

Joe Kendhammer, WSU—LaCrosse — first
Eric Arnold, Bradley University — second
Carl Dixon, Illinois Wesleyan Univ. — third

RHETORICAL CRITICISM:

Eric Arnold, Bradley University — first
Suzanne Johnson, Macalaster College—second
Lemoyne Baquet, Ripon College — third

The most outstanding piece of business transacted was to plan for an experimental type of meeting for 1972. The specific type of experimentation has not yet been decided.

Election of new officers resulted in:

Upper Mississippi

Governor, Grace Walsh, WSU—Eau Claire;
Vice Pres. (Governor elect) James Pitzner, St. Johns University, Minnesota; Sec.-Treas., Hazel Scott, Moorhead State College, Minnesota

Illinois

Governor, Edna Sorber, WSU—Whitewater;
Vice Pres. (Governor elect) Marvin Kleinau, Southern Illinois University, Carbondale; Sec.-Treas., George Armstrong, Bradley University



New officers (Upper Mississippi Province) — Sec.-Treas., Hazel Scott; Vice Pres., James Pitzner; Governor, Grace Walsh. New officers (Illinois Province) — Governor, Edna Sorber; Vice Pres., Marvin Kleinau, Sec.-Treas., George Armstrong.

Eric Arnold, Bradley University, receives the Sweepstakes award from Jack Starr, WSU—LaCrosse.

Bi-Province of the Sioux and the Missouri

March 25-27, Black Hills State College, South Dakota

Sweepstakes - Superior

Augustana College
Black Hills State College

Discussion - Superior

Jill Jeffries, Black Hills State College
Jim Darby, Westmar College
Barry Muxen, Dakota Wesleyan University

Extemporaneous speaking - Superior

Connie Istratescu, Black Hills State College
Marian Wold, Sioux Falls College

Oratory - Superior

David Larson, Augustana College
Twila Tschetter, Northern State College

Oral Interpretation - Superior

Dennis Hansen, Augustana College
Sharon Shockley, Evangel College

After Dinner Speaking - Superior

Judy Beasley, Evangel College
James Olson, Westmar College

New Province officers elected and installed officially by Fred Goodwin at the Joint Provincial banquet on March 26:

Province of the Sioux

Governor — Fred Phelps, Morningsdale College;
Lt. Governor — Jerry Wisnor, Augustana College;
Sec. Treasurer — James Zeman, Northern State College

Province of the Missouri

Governor — Harold Sampson, Central Missouri State College; Lt. Governor — Tom Willett, William Jewell College; Sec.-Treasurer — Tom Harte, Southeast Missouri State College

Province of the Pacific



(Picture at left) Upper Division Sweepstakes — Ann Wallace, Fresno; Joe Stone, Univ. of Texas, El Paso;
(Center picture) Upper Division Debate — Jerry Howeter, Sacramento; John Hollenbeck, Sacramento;
Dave Ledbetter, Redlands; Greg Amundson, Redlands. Not shown: Gold and Hart, San Fernando Valley
SC. (Picture at right) Senior Interp — Ben Soloman, San Diego; Cheryl Ashton, San Diego; Susan Macy,
Fresno; Jerry Lannin, Cal Western.

The Province of the Pacific held its meeting at the University of Nevada, Las Vegas, March 23-25. Representatives of seventeen chapters were present. Participating were: University of Arizona, University of Redlands, University of the Pacific, Pepperdine College, San Diego State College, Pasadena College, Humboldt State College, Fresno State College, San Fernando Valley State College, Cal Poly — Pomona, Cal Western University, Cal State Hayward, Sacramento State College, Stanislaus State College, University of Nevada — Las Vegas, New Mexico State University, and University of Texas — El Paso.

Sweepstakes Winners

Fresno State College, California
University of Texas — El Paso

Superior Contest Winners

DEBATE

(Lower): Howard and Demer, San Fernando Valley; Fuentes and Gorman, University of Texas — El Paso

(Upper): Ledbetter and Amundson, Univ. of Redlands; Gold and Hart, San Fernando Valley; Howeter and Hollenbeck, Sacramento State

EXTEMP

(Lower): Bill Murray, Cal Poly — Pomona; Barbara Anderson, Cal Western Univ.; JoAnn Iaconis, Cal Western Univ.

(Upper): Doug Layton, Cal Western Univ.; Mark Hart, San Fernando Valley; Greg Amundson, Univ. of Redlands; David Ledbetter, Univ. of Redlands; Bob Malone, Univ. of Texas — El Paso

PERSUASION

(Lower): Bud Starr, Univ. of the Pacific; Diane Hopson, Humboldt State; Bill Springer, Cal Poly — Pomona; Kaplan, Univ of California, Berkley

(Upper) Crystal Stone, Univ. of Texas — El Paso; Laura Gold, San Fernando Valley; Zimmerman, Univ. of California, Berkley

INTERPRETATION

(Lower): Diane Hopson, Humboldt State; Robin Perring, Univ. of Nevada — Las Vegas; Marilyn Deiner, San Fernando Valley

(Upper): Ben Soloman, San Diego State; Cheryl Aston, San Diego State; Jerry Lannin, Cal Western Univ.; Sue Macy, Fresno State College.

The Convention was highlighted on the final day by a buffet luncheon at the Thunderbird Hotel in the Virginia City Room. Prof. Larry Kokkeler, Univ. of Nevada — Las Vegas, announced the new officers: Governor David Natharius, Fresno State College, Lt. Gov. Penny Bryne, University of Texas — El Paso, Sec.-Treas. Mike Dues, Sacramento State College.

Province of the Plains



PROVINCE OF THE PLAINS INDIVIDUAL EVENTS CHAMPIONS (left to right) Interpretative: Don Lawrence, Southwestern; Randy Hendershot, Washburn. Oratory: Dave Riggs, Adams State (Colo.); Joy Carpenter, Bethel, (Kansas). Extemp: Steve Schoenmaker, Southern Colorado State College; Steve Neill, Kansas State College, Pittsburg.

Twenty of twenty-seven chapters attended the Provincial meet hosted by Kearney State College, Kansas, March 26-28.

Sweepstakes Winners

Southwestern College, Kansas — first
University of Northern Colorado (formerly Colorado State College) — second
Kansas State Teachers College — third

Superior Contest Winners

SENIOR DEBATE:

Jim Payne, Don Lawrence, Southwestern State College, Kansas; Mike North, Jim Akins, Kansas State Teachers College; Cindy Ward, Steve Neill, Kansas State College, Pittsburg

JUNIOR DEBATE:

Bill Davis, Pat Sorrels, Washburn Univ., Kansas; Sara Graver, Steve Hailey, Southwestern State College

ORATORY:

Dave Riggs, Adams State College, Colorado; Joy Carpenter, Bethel College, Kansas

EXTEMPORE:

Steve Schoenmaker, Southern Colorado State College; Steve Neill, Kansas State College, Pittsburg; Dave White, Univ. of Northern Colorado

INTERPRETATION:

Don Lawrence, Southwestern College, Kansas;



PROVINCE OF THE PLAINS OFFICERS 1970-72 (left to right) Mary Hagen, Colorado State University, female student representative; Chuck Fulcher, Washburn, Secretary-treasurer; Robert Kunkel, Governor, Kearney State; Don Swanson, Lt. Gov., Southern Colorado State; Dave White, Colorado State College, male student representative.

Randy Hendershot, Washburn Univ., Kansas; Wilma Van Kirk, Adams State College, Colorado.

Presenting the new Province officers: Governor Robert R. Kunkel, Kearney State College, Kansas; Lt. Gov. Don Swanson, Southern Colorado State College; Sec.-Treas., Chuck Fulcher, Washburn University; Student Representatives — Mary Hagen, University of Northern Colorado; and

Dave White, Colorado State University.

Other highlights of the tournament-convention included a Province Party (students and faculty) which was well attended and much enjoyed; the Province voted to continue it. Two business meetings were held. National President H. Francis Short was a featured speaker. Tentative plans are to hold the 1972 Provincial in Colorado.



PROVINCE OF THE PLAINS JUNIOR DEBATE WINNERS
First place: Bill Davis and Pat Sorrels, Washburn University of Topeka; Second place: Sara Graver and Steve Hailey of Southwestern College, Winfield, Kansas.



PROVINCE OF THE PLAINS SENIOR DEBATE WINNERS
First place: Jim Payne and Don Lawrence, Southwestern College, Winfield, Kansas; Second Place: Mike North and Jim Akins, Kansas State Teachers College.

Province of the Lakes



New officers of the Lakes: Dan Millar, Lt. Gov.; Roselyn Freedman, Sec.-Treas.; Wayne Wall, Governor.

Fifteen schools from the four-state area of Ohio, Indiana, West Virginia, and Michigan gathered on the host campus of the University of Akron March 25-28 for the 1970 Provincial meeting.

Superior Contest Winners

DEBATE:

Bowling Green (A) — Dan De Stephan, Ralph Carbonen; Central Michigan — John McQuillan, Dennis Ross

ORATORY:

Greg Dalton, Kent State

DISCUSSION:

Art Tealstron, Bowling Green

EXTEMP:

Neil Godbey, Mt. Union; Ted Jones, Otterbein

AFTER-DINNER:

Doug Redding, Otterbein

ORAL INTERP:

Susan Barry, Marietta

Sweepstakes Winners

Otterbein College — Superior
Bowling Green S.U — Excellent
Hope College — Excellent
Marietta College — Excellent

Newly elected officers are: Governor, Wayne Wall, Marietta College; Lt. Gov., Dan Millar, Central Michigan University; Sec.-Treas. Roselyn Freedman, Morris Harvey College. Out-going Governor Harold Mikle, Hope College, received the traditional Governor's Ring in appreciation for his leadership; presentation was made by the new Governor, Wayne Wall. National Editor Gil Rau received a Distinguished Service Award plaque; presentation was made by Past National President Raymond Yeager. Governor Seth Hawkins, Province of the Northeast, was present throughout the meet serving as a neutral guest judge. Host John Mendiola, University of Akron, surprised all with two issues of a Provincial newsletter called THE FORENCYCLICAL. Speaker at the banquet was Congressman Donald E. Lukens from Ohio.



Superior winners from the Lakes: (front row) Doug Redding, Susan Barry; (back row) Ted Jones, Greg Dalton, Dan DeStephan, Ralph Carbonen.



Sweepstakes Winners — Otterbein College: (front row) Charlie Jackson, Karen Beiner, Marcia Knisley, Bonnie O'Leary (coach); (back row) Ted Jones, Dr. James Grissinger (coach), Mark Filipow, Bob Fortner, Doug Redding.



Harold Mikle receives the Governor's ring from Wayne Wall.

New Members of Pi Kappa Delta

CENTRAL MICHIGAN UNIVERSITY

43461 Robert Lippie

OKLAHOMA BAPTIST UNIVERSITY

43462 Andy C. Overmon
43463 David J. Simmons

WILLIAM JEWELL COLLEGE

43464 Tom Dison
43465 Marianne A. Millen
43466 Julia Moore
43467 Georgia Sue Pearson
43468 Terry W. Siron

CENTRAL MICHIGAN UNIVERSITY

43469 Cheryl A. Cardelli

AUGUSTANA COLLEGE—S. D.

43470 Diane Baird
43471 Cheryl Johnson
43472 Darron Knutson
43473 Douglas Kraft
43474 David Geo. Larson
43475 David Nelson

MIDDLE TENN. STATE UNIVERSITY

43476 M. G. Scarlett
43477 Clay Tucker

WEST CHESTER STATE COLLEGE

43478 Carolyn Berglund Keefe
43479 Paul Maloch
43480 Rosemary A. Rooney
43481 Dorian L. Strayer

NORWICH UNIVERSITY

43482 Roy Einar Gronquist

PASADENA COLLEGE

43483 Donald Byrd Oliver

CENTRAL MICHIGAN UNIVERSITY

43484 Robert Van Camp

WEST CHESTER STATE COLLEGE

43485 Helene McElroy

SOUTHEAST MISSOURI STATE COLLEGE

43486 Gary R. Emmons

HOUSTON BAPTIST COLLEGE

43487 Brenda Culverhouse
43488 Michele Duvall
43489 William K. Grasty, Jr.
43490 Terry Lee Winborn

UNIVERSITY OF HOUSTON

43491 Mary Ann Hughes

ELMHURST COLLEGE

43492 Floyd Jeter
43493 Donald L. Juday

43494 John Meiners
43495 Samuel E. Palermo
43496 Ann Elizabeth Smurlo
43497 Christ Troupis

EVANGEL COLLEGE

43498 John Beydler
43499 Elaine Ruth Cleeton
43500 Kenneth W. Lee
43501 Franklin E. Spinden

MARSHALL UNIVERSITY

43502 Alison Alexander
43503 David L. Buchanan
43504 David J. Dorworth
43505 Frank L. Hubbard
43506 John R. Snider

WASHBURN UNIVERSITY

43507 Brad Boyd
43508 William Davis
43509 Randy Hendershot
43510 Patricia L. Sorrels

WINONA STATE COLLEGE

43511 Dennis Aase
43512 Patricia Tolmie Frisby
43513 Ruth Greden
43514 David Hoel
43515 Candace Kay Kobler
43516 Gene Larrabee
43517 Mark Nolan
43518 Roger Runningen
43519 Lee Turner
43520 Mary Twite

WHITMAN COLLEGE

43521 Don Alperstein
43522 Greg Leonhard

SEATTLE PACIFIC COLLEGE

43523 Kathleen Elliott
43524 Paul Harvey, Jr.
43525 David L. Moe
43526 Cheryl Hall

NORTHWESTERN COLLEGE

43527 Glenn Henderson
43528 David Loveall

THIEL COLLEGE

43529 Richard William Errett
43530 Barry Wayne Heasley
43531 Clifford Wallie Myers
43532 Dana H. Teufel

MARSHALL UNIVERSITY

43533 Connie Gail Clark
43534 Steven R. Hayes
43535 Janne R. Malcolm

STERLING COLLEGE

43536 Gordon Kling, Jr.
43537 Jerene Newby
43538 Steven Spore

OKLAHOMA BAPTIST UNIVERSITY

43539 Verne L. McCabe

WHITMAN COLLEGE

43540 Kathy Clark
43541 Ron Johnston

STEPHEN F. AUSTIN STATE UNIVERSITY

43542 Lillie Beth Bell
43543 Roger Gary Dudley
43544 Frank Follis
43545 Michael Lewis Finley
43546 Gary R. Garrison
43547 Caroline Linda Schearer
43548 Donald Gregory Storch
43549 Nancy Jean Wilson

COLORADO STATE UNIVERSITY

43550 Gregory Stephen Caldwell
43551 Darryl Lee Harvey
43552 April Lynn Haulman
43553 Dale Mayer
43554 Robert Lee Trierweiler
43555 Gary L. Wilken
43556 Kent Wright

UNIV. OF CALIFORNIA — LOS ANGELES

43557 Mark Bisnow
43558 Julie Bornstein
43559 Donald Thomas Hornstein
43560 Harry Reeves Howell III
43561 Barrett McInerney
43562 Roy L. Shults
43563 Alec B. Wisner

KANSAS STATE TEACHERS COLLEGE

43564 James Akins
43565 Karen Entriken
43566 Zandra Kopp
43567 Marcia Kruse
43568 Michael McHugh
43569 Michael North
43570 James Wilson

SIMPSON COLLEGE

43571 Pam Farnham
43572 John Henning
43573 Janet Richardson

MORRIS HARVEY COLLEGE

43574 Pamela Buzzard

EASTERN MONTANA COLLEGE

43575 Lynda Mae Baumgardner
43576 Carol Boslaugh
43577 Sandra Kay Dvergsdal
43578 Janeth LeAnn Kennedy
43579 Myrna Fay Rapstad
43580 Dan Roadhouse
43581 Janet L. Strickland

LOCK HAVEN STATE COLLEGE

43582 M. Chip Devenger
43583 Marcus Konick

KANSAS STATE COLLEGE

43584 Bill Edens
 43585 Randy Gregg
 43586 Pat Kennedy
 43587 Sharon Miller
 43588 Bob Pauley

STANISLAUS STATE COLLEGE

43589 John Harrel Cearley
 43590 Tony Kocolas
 43591 Jeffrey Mutnick
 43592 Kenneth D. Redick
 43593 Elizabeth Chris Sauer
 43594 Nancy Marie Smith

WHITMAN COLLEGE

43595 Jim Abbott
 43596 Anne Paxton

LOUISIANA POLYTECHNIC INSTITUTE

43597 Kathleen Alta Garfield
 43598 Keith Dunn Jones
 43599 Clifford Noel Jordan
 43600 Paula B. Pennington
 43601 David Charles Roach

SIOUX FALLS COLLEGE

43602 Janet Pedde
 43603 Robert Ritter

PHILLIPS UNIVERSITY

43604 Robert Patrick Shawn

WISCONSIN STATE UNIV. — SUPERIOR

43605 Donald Beetcher
 43606 Andrew Bitsko
 43607 Catherine Boortz
 43608 Alyce Hackett
 43609 Maureen Healy
 43610 Robert Jansen
 43611 Susan Olejnczak
 43612 Douglas Peters
 43613 Donald Saltzburg
 43614 Kathleen Sweeney

MORNINGSIDE COLLEGE

43615 Mike Ellwanger
 43616 Mike Neu
 43617 Kathy Parker
 43618 Verlin Reiter
 43619 Fred Stecker
 43620 George Stowe

PASADENA COLLEGE

43621 Janice Olin

UPPER IOWA COLLEGE

43622 Mary A. Hoehl
 43623 Frank Charles Johnson
 43624 Jane Slifer

BETHEL COLLEGE — KANSAS

43625 Curtis Wayne Gaylord
 43626 David Arthur Hauray
 43627 Robert Mayer
 43628 Janet Penner

BOISE STATE COLLEGE

43629 Robert A. Barraclough
 43630 Robert E. Buttane
 43631 Rick Hunt

CENTRAL MISSOURI STATE COLLEGE

43632 Gail Elaine Akerson
 43633 Michael James Bowler
 43634 Mark S. Bryant
 43635 Sheryl Beth Etling
 43636 Judith Ann Jacob
 43637 Marcella Reed
 43638 Richard L. Rice

HARDING COLLEGE

43639 Roger T. Castle
 43640 Thomas Raymond Estes, Jr.
 43641 Alice Landrum
 43642 Reagon W. Wilson, Jr.

PACIFIC LUTHERAN UNIVERSITY

43643 Monika Patricia Merritt
 43644 Carl Schwinck
 43645 Gloria Kathleen Stahl
 43646 Samuel E. Torvend
 43647 Karen Wendt

GREENVILLE COLLEGE

43648 Cary Holman
 43649 Pamela Houston
 43650 Kenneth Kaufmann
 43651 David Lee

DOANE COLLEGE

43652 Vicki Burch
 43653 Otis John King, III
 43654 John Wissler
 43655 Bonnie Jean Robertson

SOUTH DAKOTA SCHOOL OF MINES & TECH.

43656 Dennis J. Burfeindt
 43657 Robert L. Fox
 43658 Gordon L. Guenther
 43659 James K. Lockhart
 43660 Ronald H. Oney
 43661 Daniel A. Wickard

MILLSAPS COLLEGE

43662 Michael Ainsworth
 43663 Rebecca Barnes
 43664 Joel W. Howell, III
 43665 Stephen H. Leech
 43666 George Edward Pickle, Jr.

43667 Carolyn Ann Shaw
 43668 Robert C. Williamson

CENTRAL STATE COLLEGE

43669 Shelly Allen
 43670 Bobbie Kay Berry
 43671 Michael Forrest Cowan
 43672 Bill Eakin
 43673 Carl Russell Graves
 43674 Robert Allan Griffith
 43675 Terry J. Ham
 43676 Ben Lapkin
 43677 Dale Lee Woody

HOWARD PAYNE COLLEGE

43678 Otis Archie Jr.
 43679 Rebekah A. Dannelley
 43680 Don Honcock
 43681 Roland Johnson
 43682 Patsy Ann Kirklen
 43683 James Michael Levens
 43684 Harry Steven Mercer

43685 Bobby Ray Newman
 43686 Bertie Elizabeth Perry
 43687 Michael Karl Sirois

McNEESE STATE COLLEGE

43688 Diane DeVall
 43689 Stephen E. Dever
 43690 Evelyn M. Oubre
 43691 David J. Kay
 43692 Arthur Wannage
 43693 Debbie LeBlanc
 43694 Oliver Schruppf
 43695 Joel Woodard

UNIVERSITY OF THE PACIFIC

43696 Edward G. Cates
 43697 Larry A. Hill
 43698 Linda Patricia Horner
 43699 Hugh A. Linstrom
 43700 Cecil M. Starr

MOORHEAD STATE COLLEGE

43701 Brian Lee Berberich
 43702 Steve Hillestad
 43703 Curtis D. Johnson
 43704 Joseph Merkens Jr.

UNIV. OF CALIFORNIA — BERKELEY

43705 Henry H. Chase
 43706 Paul Easton
 43707 Frances Margaret Helfrich
 43708 Howard Kaplan
 43709 William Allen Levine
 43710 Raymond Joseph Minella
 43711 James W. Scott
 43712 Stephan F. P. Zimmermann

CARSON-NEWMAN COLLEGE

43713 Steven J. Blad
 43714 Ronald Brennan
 43715 Joseph G. Coker
 43716 William L. Davis
 43717 Eldon Eugene Mathis
 43718 Larry R. Myers
 43719 James C. Stubblefield

ARIZONA STATE UNIVERSITY

43720 Martin Lawrence Diaz
 43721 Susan Frey
 43722 Thomas Allen Jaudon Gookin

NEW MEXICO STATE UNIVERSITY

43723 Carol Jo Haas
 43724 Talea Matsler
 43725 Michael Roe

ADAMS STATE COLLEGE

43726 Michael Hart
 43727 William Alonzo Tafoya

EVANGEL COLLEGE

43728 Sharon Shockley
 43729 Michael Edward Thomas

**SOUTHERN COLORADO
STATE COLLEGE**

43730 James Croshal
43731 James E. Jones

**HUMBOLDT STATE
COLLEGE**

43732 Phyllis Anderson
43733 Rebecca Diane Hopson

**WESTERN STATE
COLLEGE**

43734 Robert Blackburn
43735 Patricia Kathleen Kelley
43736 Trista P. Rivers

PEPPERDINE COLLEGE

43737 Ralph E. Baker
43738 Michael G. Hunt

**TENN. TECHNOLOGICAL
UNIVERSITY**

43739 John Wayne Bailey
43740 Bennie R. Stover

**SOUTHWEST BAPTIST
COLLEGE**

43741 Cheryl L. Cannady
43742 Suzanne V. Tallman

UNIVERSITY OF HOUSTON

43743 Ira Garrison, Jr.
43744 David Stedman
43745 James Stockton

ROCKHURST COLLEGE

43746 Michael Theno

DRAKE UNIVERSITY

43747 Karen Leven

UNIVERSITY OF ARIZONA

43748 Francesca Cirrincione

**SOUTHWEST BAPTIST
COLLEGE**

43749 John D. Hackworth

**NORTHEAST MISSOURI
STATE COLLEGE**

43750 Rose Helen Smith

McPHERSON COLLEGE

43751 Stewart Mark Hoover

**SOUTHERN ILLINOIS
UNIV. — CARBONDALE**

43752 Rick DeMarsh

MISSISSIPPI COLLEGE

43753 Jerry Allan McBride

**EASTERN NEW MEXICO
UNIVERSITY**

43754 Roger M. Addison
43755 Tomma J. Greathouse
43756 Adrienne Joyce Hagan
43757 Colette N. Hagan
43758 Hal Loewen Howell
43759 Edward Calhoun
Mabrito
43760 Mark Stanely

**WISCONSIN STATE UNIV. —
WHITEWATER**

43761 Diane Faye Babel
43762 Lori Gauer

43763 Eileen M. Meffert

43764 John Moser

43765 Stuart O. Olds

43766 Timothy G. Reilly

43767 Kenneth Sajdak

43768 Joan M. Schoofs

43769 Donna Streim

**WISCONSIN STATE UNIV. —
EAU CLAIRE**

43770 Patricia Ann Boland

43771 Alicianna Carter

43772 Michael C. Chatt

43773 Jeff Ketm

43774 Constance J. Mullen

43775 Joanne Pilgrim

**UNIV. OF SOUTHWESTERN
LOUISIANA**

43776 Douglas Capuder

43777 Ronald J. Foreman

43778 Lorraine Goodey

43779 Carolyn McGee

43780 Jules Patout, Jr.

43781 Gail Prather

43782 Cynthia Randazzo

**NORTHERN STATE
COLLEGE**

43783 Paula Kay Craig

43784 Judy Dianne Hoffman

43785 Linda Johnson

43786 Lynn MacNeill

43787 Alan Severson

43788 Twila Kae Tschetter

43789 Roland L. Walter

**EAST CENTRAL STATE
COLLEGE**

43790 Beverly Ann Alberry

43791 Betsy Ballard

43792 Brenda Duffield

43793 Dee Ann Evans

43794 Anna Mummert

43795 Willie D. Osborne, Jr.

43796 Stanley P. Wagner

**BLACK HILLS STATE
COLLEGE**

43797 Sherry Hicks

43798 Jill Jeffries

43799 Jan Knispel

43800 Barry Schneider

43801 David Zuercher

**WISCONSIN STATE UNIV. —
RIVER FALLS**

43802 Karen Handorf

43803 Ellen Rose Mason

43804 Darlene Poppe

43805 Frank Scheide

43806 Roy Joseph Schieffer

KEARNEY STATE COLLEGE

43807 Mariann Galyen

43808 Gary Lee Johansen

43809 Michael Thomas McNiff

43810 Alfred Moreau

43811 Madeline Valavanis

CONCORDIA COLLEGE

43812 Delbert Carver

43813 Paul Raymond Nelson

43814 Kenneth Olson

43815 Stanley Tofteland

MACALESTER COLLEGE

43816 Barry Brummet

43817 Douglas Drake

43818 Carol Grant

43819 Randi Pose

43820 Roger Stresow

43821 Brent Williams

CLARION STATE COLLEGE

43822 Alan Mark Hantz

43823 Robert H. Leeper

43824 David A. Schell

43825 Carle Joan Thomas

**CHADRON STATE
COLLEGE**

43826 Sheralee Adsit

43827 Samuel Lee Couch

43828 William Thomas

Crenshaw

43829 Darrell Eugene Jensen

OTTERBEIN COLLEGE

43830 Mark Filipow

43831 Charles Jackson

43832 Marcia Knisley

43833 Linda Lyons

**SOUTHWESTERN
COLLEGE**

43834 Wendell John Barker

43835 Steven Patrick Hailey

43836 Patricia Houtz

MARIETTA COLLEGE

43837 Susan Barry

43838 Jonathan Michael Craig

43839 John Shannon

**SOUTHERN OREGON
COLLEGE**

43840 Michael Allan Lunde

43841 Jackie Otremba

**OUACHITA BAPTIST
UNIVERSITY**

43842 Linda Cross

43843 Jane Thomas

**CENTRAL MICHIGAN
UNIVERSITY**

43844 Peggy Fleming

43845 Rick Fox

43846 Elaine LeTarte

**SOUTHERN ILLINOIS
UNIV. — EDWARDSVILLE**

43847 Charles A. Mecum

UNIVERSITY OF HOUSTON

43848 Walter Ulrich

MORRIS HARVEY COLLEGE

43849 Carole R. Davis

UNIVERSITY OF AKRON

43850 Bruce M. Winchell

**WISCONSIN STATE UNIV. —
LA CROSSE**

43851 Jody Corbett

43852 Norman Fjelstad

43853 Elaine F. Gehring

43854 Elizabeth Harrison

43855 Kristin Ann Kandler

43856 Susan Korn

43857 Wayne P. Krumel
43858 Steven J. Larsen
43859 Lee Ann Milisch
43860 Timothy Ian Mornard
43861 Tony J. Tanke

LUTHER COLLEGE
43862 Marty Kohlmeyer

EAST STROUDSBURG
STATE COLLEGE
43863 Gabriele J. Binkenstein
43864 Ron Collier
43865 Margaretann Gasink
43866 Nancy Kauffman
43867 Barry Smock

ROCKY MOUNTAIN
COLLEGE
43868 Dean Braughton
43869 Robert L. Cropsey

43870 Arnold Houston
43871 Joanne Peterson
43872 Ronald J. Scariano
43873 Kathy Stahl
43874 Jeanne Marie Wood

LINFIELD COLLEGE
43875 William Bailey
43876 Leone Fraser
43877 Patricia Hastings
43878 Heather Louise Knight

SOUTHERN COLORADO
STATE COLLEGE
43879 Kevin Frith
43880 Larry Graham
43881 Mary Joan Ragulsky
43882 Anita Zupancic
UNIVERSITY OF
PUGET SOUND
43883 Jeanie Naught
43884 Stan Taylor
CLARION STATE COLLEGE
43885 Teresa A. Halula
WESTERN STATE
COLLEGE
43886 Jean Marie Tripler

FORMULA FOR ACTIVE CHAPTERS

1. Commit your school to make that big trip next year.
2. Plan a budget for this trip.
3. Plan fund raising for more money.
4. Make that trip!

PLAN AHEAD!

1 9 7 1

NATIONAL PI KAPPA DELTA CONVENTION and TOURNAMENT

UNIVERSITY OF HOUSTON

Houston, Texas

(Dates to be Announced)