

THE FORENSIC

OF PI KAPPA DELTA

GEORGE McCARTY, Editor

G. W. FINLEY, Business Manager

Issued four times a year, in October, January, March and May. Subscription price per year, \$1.00. Subscription free to all active members. Entered as second-class matter, October, 1928, at the post office at Fort Collins, Colorado, under Act of August 24, 1912.

Office of Publication: Colorado Printing Company, Fort Collins, Colo. Address all copy to George McCarty, Editor Pi Kappa Delta Forensic, care of Institute of Character Research, University of Iowa, Iowa City, Iowa.

SERIES 17

MAY, 1932

NO. 5

TABLE OF CONTENTS

Ninth Biennial Convention Banquet.....	Insert
Youth To The Statesmen.....	230
JAMES FREDERICK GREEN	
National Honors in the Tulsa Tournament.....	231
Complete Tabulated Tournament Results.....	239
Our National President.....	259
Something About The Convention.....	260
The Tulsa Civitan Club.....	268
Telling The Home Folks.....	269
As Others See Us.....	271
Forensic Champions and Campus Support.....	272
Dr. Westfall Editor?.....	274
Good Diction and How To Obtain It.....	275
MARGARET PRENDERGAST McLEAN	
Excerpts From Gov. Woodring's Speech.....	283
Registration at Ninth Biennial.....	286
Minutes of Business Sessions.....	292
Hickman, Hickman, Hickman and Hickman.....	304
JOHN PARLETTE	
Sixteen Years Ago in The Forensic.....	307

YOUTH TO THE STATESMEN

at

World Disarmament Conference

James Frederick Green, Yale, 1932, Representative of the National Student Disarmament Council (U. S. A.) in an address to the World Disarmament Conference, Geneva, February 2, 1932.

“**A**FTER CONTEMPLATING the events preceding the catastrophe of 1914 we remain unconvinced as to the wisdom of our predecessors. . . . We respect the noble war dead, but we question the judgment of those responsible for their death.

“Organized slaughter, we realize, does not settle a dispute; it merely silences an argument. . . .

“The other speakers have much at stake; we have even more, for we are literally fighting for our lives. I stand before you as an attorney for the defense, pleading for a reprieve. It is my generation which will be called upon to surrender all we consider worthwhile in life in order to become targets for machine-gun bullets and victims for the latest poisonous gas. It is the young men and women of my age who will be commanded to commit suicide. It is my generation which will be requested to destroy the best of human culture, perhaps civilization itself, for causes which future historians will discover to be erroneous, if not utterly stupid or actually vicious. We have thus lost interest in being prepared for cannon fodder.

“In a sense, I am presenting an ultimatum, rather than a petition. For behind your deliberations stand staring down at us the specter of Death. We desire to live and to live at peace. We desire to construct a world society providing freedom, equal opportunity, and a sense of security. We desire to make possible for every human being full development of personality in terms of the highest human and spiritual values we know.”

National Honors in the Tulsa Tournament

WOMEN'S DEBATE

Miss Beaghler is a freshman. She and her colleague, Miss Staley, are each only 17 years old. Miss Beaghler debated one year in high school before entering Hastings College. She was a member of the team which won the women's debate championship in the Southwestern College invitation debate tournament last December. At Tulsa Miss Beaghler also participated in extemporaneous speaking.

First place honors in Women's Debate were won by Mary Margaret Beaghler and Helen Staley of Hastings College. Their achievement is particularly remarkable in view of their comparative inexperience



MARY M. BEAGHLER

in forensics.

Helen Staley is a sophomore, although this is the first year in which she has participated in forensics. She is particularly talented in music and is a leader in campus activities. She won second place in the Nebraska women's extemporaneous speaking contest. She was also a member of the team which won the Southwestern College invitation debate tournament. This tournament and two dual debates were the only intercollegiate debates in which she and Miss Beaghler ever participated before the National Pi Kappa Delta Tournament.

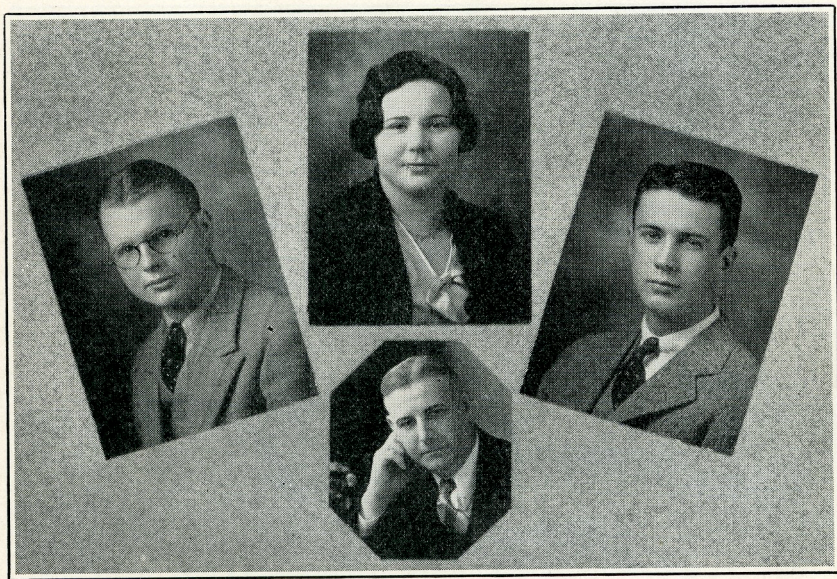


HELEN STALEY



WINNERS IN THE NATIONAL PI KAPPA DELTA TOURNAMENT HELD IN TULSA, OKLAHOMA, 1932
 Reading left to right. Top row: Prof. George R. R. Pflaum, Millard Berquist, Arthur Kincaid, Mason Frost, Marvin Dean, Leonard Power.
 Second row: Ruth Leslie, Wanda Hayden, Helen Staley, Margaret Beaghler, Blossom Mills, Alice Hickman, Anita Brown
 Bottom row: Harwood Stump, Oliver Witterman, William D. Snow, Leonard R. Linsenmayer.
 Photo by The Howards, 109 Tulsa Bldg, Tulsa, Oklahoma.

UNIVERSITY OF REDLANDS WINS MEN'S DEBATE



MASON FROST

BLOSSOM MILLS
PROF. E. R. NICHOLS

MARVIN DEAN

The University of Redlands has had a delegation at every Pi Kappa Delta convention. The persons having made the trip now number thirty.

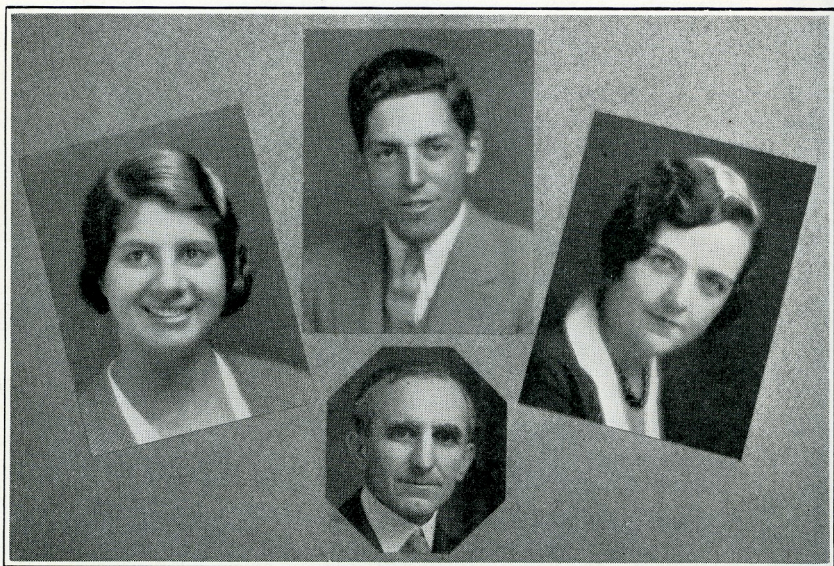
This year's men's team, winners at Tulsa, composed of Mason Frost and Marvin Dean, is a senior aggregation. They have debated together for two debate seasons. This year they have had forty debates on "Control of Industry," including those at Tulsa. Three were non-decision, five were lost and the rest won.

MASON FROST

Mason Frost, whose home is Rialto, California, was graduated from the San Bernardino high school where he was prominent in debate. He entered Redlands with the class of '32. He debated in his freshman year, but did not re-enter debate until his junior year. He is a Congregational minister and expects to attend theological seminary after graduation from Redlands. Mr. Frost takes an interest in students' activities. He was manager of the senior play; is manager of the annual Zanjafiesta,

(Continued on page 235)

THE WINNING AGGREGATION FROM U. C. L. A.



WANDA HAYDEN

HARWOOD STUMP

RUTH LESLIE

PROF. CHARLES MARSH

WANDA HAYDEN

First place in women's oratory was won by Wanda Hayden, U. C. L. A. Former forensic honors coming to Miss Hayden include: First in Oratorical contest on the Constitution in high school; three years a member of U. C. L. A. women's debate team; won first in Southern California women's extempore contest in November, 1931; member of the debate team winning second place in Tulsa tournament.

Ruth Leslie and Wanda Hayden,* representing U. C. L. A., won second honors in women's debate, losing in the final contest to the championship team of Hastings.

HARWOOD STUMP

Harwood Stump, senior law of the University of California at Los Angeles, won second honors in men's oratory. Mr. Stump has a long list of forensic honors to his credit, of which the following are outstanding: As a student in the Long Beach Polytechnic high school—three years on the debate squad; reach-

*For the statement of Miss Hayden's forensic record, see Women's Oratory.

ed Western State finals of the National Oratorical contest on the Constitution; senior class orator and valedictorian; winner of second place in national finals of National Oratorical contest on Outlaw War Treaties. While in Long Beach Junior College member of California state championship debate team for 1929; winner Southern California extempore contest for junior colleges.

RUTH LESLIE

Ruth Leslie is a senior. She has debated during her four years at U. C. L. A. As a sophomore she won second place in the Southern California oratorical contest; as a junior first in Southern California extempore speaking; first in women's extempore of the province convention last year. Miss Leslie is president of the Southern California Women's Debate League.

Prof. Charles Marsh, former National President of Pi Kappa Delta, Department of Speech, University of California at Los Angeles.



UNIVERSITY OF REDLANDS WINS MEN'S DEBATE

(Continued from page 233)

a musical play; is treasurer of the senior class, and made an unsuccessful race for the A. S. U. R. presidency in February.

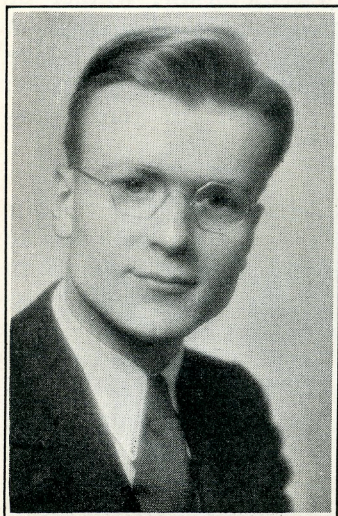
BLOSSOM MILLS

Miss Blossom Mills, who won the women's extempore contest, lives in Santa Monica. She is a graduate of the Redondo high school, where she had considerable debate experience. At Redlands Miss Mills has debated for four years, won the women's extempore in the Southern California League and in the province contest in her freshman year. She is a member of Theta Alpha Phi, the dramatic club, and has been prominent in various activities at Redlands.

MARVIN DEAN

Marvin Dean, of Pasadena high school, is the son of a Baptist minister. His brother was a debater at Redlands in 1927, and Marvin expects to join his brother at Duke University next year to study law. He debated in the Pasadena high school and for four years at Redlands. He was a member of the team which won the California Province championship last year. Mr. Dean was president of the A. S. U. R. (Associated Students of University of Redlands) last semester; has been very active in dramatics; was a member of the class basketball team in his freshman year, and is on the varsity track team at present.

MEN'S EXTEMPORE SPEAKING



WM. D. SNOW

Wm. D. Snow, 18-year-old senior of the University of Toledo won first place honors in men's extempore speaking.

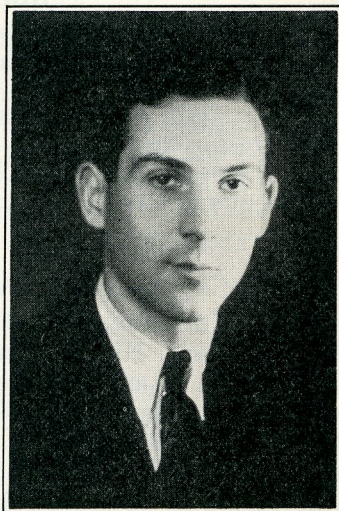
For the past two years Mr. Snow has been a member of the University of Toledo debate team, serving this year as captain. He has participated in nearly two score intercollegiate debates, not having lost more than six. Two years ago he represented his institution in the Ohio state peace oratorical contest. At present he is president of the University Debating association; representative on the Student Council; chairman of the University Honor Court; chairman of the University radio commission,



LEONARD LINSENMAYER

The following facts taken from Mr. Linsenmayer's forensic record will suggest something of the scope of his activity, as well as the speaker's stick-to-it-ive-ness.

1. Pi Kappa Delta Convention at Wichita, men's oratory, twenty-sixth place. 2. Ohio division of National Oratorical Contest on the Constitution, 1929, fifth place. 3. Ohio Peace Oratorical Contest, Northern division, 1930, third place. 4. Province of the Lakes, Pi Kappa Delta, 1931, men's debate, first place. 5. Province of the Lakes, 1931, extempore, second place. 6. Pi Kappa Delta Convention at Tulsa, 1932, men's debate, eliminated in sixth round. 7. Pi Kappa Delta Convention at Tulsa, 1932, men's extempore, second place. 8. General debating record: Participated in 75 intercollegiate debates in four years. Of the decision debates over two-thirds won. 9. President of Ohio Eta chapter Pi Kappa Delta. 10. Special Distinction in both oratory and debate.



LEONARD LINSENMAYER

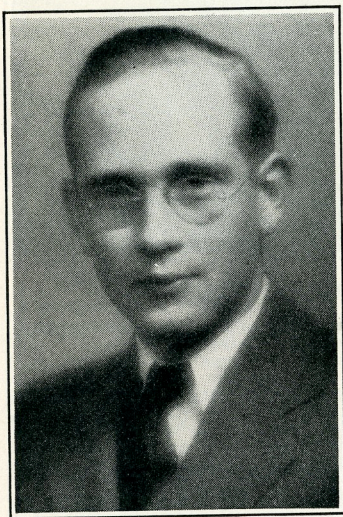
MEN'S DEBATE

Millard J. Berquist and Arthur Roy Kincaid battling for William Jewell College pushed through to second national honors in Men's Debate, losing to the Redlands contenders in the final men's clash of the tournament.

Millard J. Berquist is the first student of William Jewell college to have won in one year the degree of Special Distinction in Pi Kappa Delta, the present year's forensic season being his first in intercollegiate debating. Throughout his college career he has been a good student, having been the recipient of the junior scholarship and an active member of such fraternities as Pi Gamma Mu, social sciences; Beta Beta Beta, biology; and the International Relations Club. He will be graduated this spring and will pursue further study for his profession, the ministry.

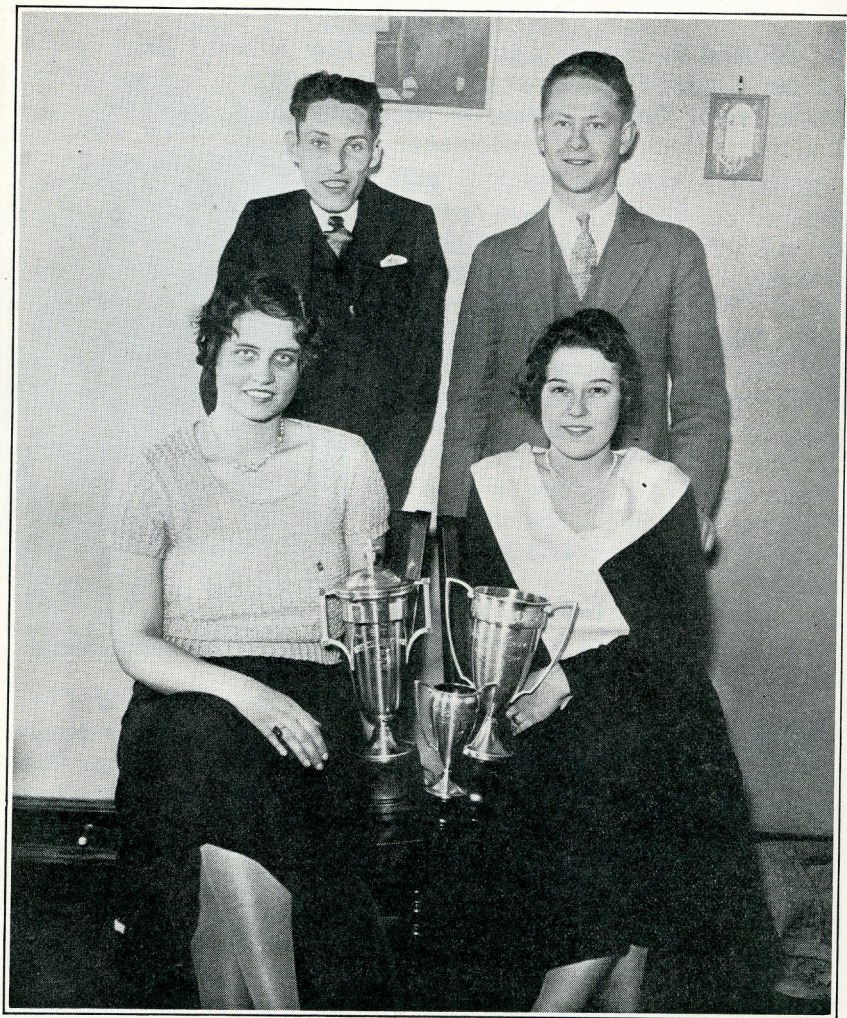


MILLARD J. BERQUIST



ARTHUR ROY KINCAID

The final contest in men's debate at Tulsa climaxed for Arthur Roy Kincaid four years of intercollegiate debating for William Jewell. During his competition Kincaid has participated in approximately 50 debates. In 1931 he was a member of the team that won first place in the Missouri Provincial tournament. Last fall he was on the team that met Oxford University of England. His name has appeared regularly on the college honor roll. He is a member of Pi Gamma Mu, International Relations Club, has served on the staff of The Student, is a member of the tennis team, and was this year captain of the debate squad. After graduation this spring he will take up the study of law.



UNIVERSITY OF WICHITA HONOR GROUP

Reading from left to right:

Standing: George Squibb—Student representative to the National Council, Oliver Witterman—First place winner in oratory at Tulsa.

Sitting: Anita Brown—Second place in Oratory. Raezella Klepper—third place in Extempore Speaking at Tulsa.

The three cups (in the picture) won by the University of Wichita this year (reading from left to right) are: First, cup won by Raezella Klepper and her two team mates Natalie Ring and Inez Crowder in Women's debate, representing the championship of the five-state meet held at Durant, Oklahoma, March 12 and 13, 1932. States were Oklahoma, Kansas, Texas, Arkansas, and Louisiana.

Cup No. 2. Cup won by Anita Brown for second place in Women's Oratory in national meet at Tulsa.

Cup No. 3. Cup won by Oliver Witterman for first honors in Men's Oratory at Tulsa.

MEN'S DEBATE TOURNAMENT

ROUND ONE

Colby College -----L	S. W. College -----W	Okla. Baptist Univ. --L
Univ. Calif. L. A. --W	College of Pacific --L	Sioux Falls Col. ---W
Maryville T. -----W	Colorado Aggies ---L	Kearney Teachers --L
Okla. City Univ. ----L	Ill. S. N. Univ. ---W	Redlands Univ. ----W
Univ. Tulsa -----L	Culver-Stockton ----L	Parsons College ---W
Augustana College _W	Trinity Univ. -----W	Ouachita College --L
Millsaps College ---W	Edmond Teachers _W	Ottawa Univ. -----L
Univ. Dubuque ----L	Aberdeen Teachers _L	Univ. Akron -----W
Sterling College ---W	Cotner College ----W	N. Car. State -----W
Toledo Univ. -----L	Ripon College -----L	Hardin College ----L
Emporia Teachers --L	Drake Univ. -----L	Missouri Central ---W
Kalamazoo College _W	Kansas Wesleyan _W	Eureka -----L
Colorado Teachers --L	Bethany College ---W	Weatherford Teach. W
Wheaton College --W	Maryville College --L	Yankton College --L
Park College -----W	Wake Forest -----L	Baldwin-Wallace ---L
Bye	Intermountain Union W	College St. Thomas W
Durant Teachers --W	Cape Girardeau ----L	Western Union ----W
S. D. Wesleyan ----L	Baylor Univ. -----W	College Ozarks ----L
Louisiana Institute _L	Ada Teachers -----W	Baker Univ. -----W
Iowa Central -----W	S. D. State -----L	River Falls T. C. ---L
Simpson College --L	Hastings College --L	College Idaho ----W
Hays Teachers ----W	Bowling Green ----W	Bye
Univ. Wichita -----W	Coe College -----L	Henderson -----L
Calif. Tech. -----L	Gustavus Adolphus W	Missouri Valley ---W
Western State T. --L	College Emporia ---W	Alva Teachers -----W
North Central (Ill) W	Centre College ----L	Grove City College _L
William Jewell Col. W	Heidelberg Univ. --W	Rollins College ---W
Sam Houston Col. --L	McKendree College _L	Col. Puget Sound --L
Bye	Westminster Col. --W	Kent College -----L
Madison Teachers _W	Texas Christian ----L	Arkansas College --W
Montana State ----L	Nebraska Wesleyan W	Pittsburg Teachers W
Michigan State ----W	N. Texas Teachers _L	Jamestown College _L
Morningside College W	Kirksville -----W	Penn College -----W
Washburn Univ. ---L	Bye	Carroll College ----L

ROUND TWO

Okla. City Univ. ---W	Sterling College ----L	Bye
Colby College -----L	Millsaps College ---W	Colorado Teachers _W
Augustana College _W	Kalamazoo College _W	S. D. Wesleyan ----L
Maryville Teachers _L	Toledo W. -----L	Park College -----W
Univ. Dubuque ----W	Wheaton College --W	Iowa Central -----W
Univ. Tulsa -----L	Emporia Teachers --L	Durant Teachers ---L

Washburn Univ.L	Maryville College --W	Harding College ----L
Montana State -----W	Drake Univ. -----L	Ottawa Univ. -----W
North Texas -----W	Intermountain Union L	Eureka -----L
Penn College -----L	Bethany College ---W	N. Car. State -----W
College of Pacific --W	Baylor Univ. -----L	Yankton College ----L
Morningside College L	Wake Forest -----W	Missouri Central --W
Ill. S. N. Univ.L	S. D. State -----W	College St. Thomas W
S. W. College -----W	Cape Girardeau ----L	Weatherford Teach. L
Trinity Univ. -----W	Bowling Green ----W	College Ozarks ----L
Colorado Aggies ----L	Ada Teachers -----L	Baldwin-Wallace ---W
Aberdeen Teachers .L	Gustavus Adolphus .W	River Falls T. C. --W
Culver-Stockton ----W	Hastings College ---L	Western Union ----L
Ripon College -----W	Centre College ----W	Bye
Edmond Teachers ---L	Coe College -----L	Baker Univ. -----W
Kansas Wesleyan --W	McKendree College .L	Missouri Valley ----W
Cotner College ----L	College Emporia ---W	College Idaho ----L
Hays Teachers ----W	Texas Christian U. .W	Grove City Col.L
Louisiana Institute .L	Heidelberg Univ. ---L	Kirksville Teach. --W
Calif. Tech. -----W	Sioux Falls Col. ---L	Col. Puget Sound --W
Simpson College ----L	Westminster Col. --W	Alva Teachers ----L
North Central (Ill.) L	Bye	Arkansas College --W
Univ. Wichita -----W	Henderson Teach. --W	Rollins College ----L
Sam Houston Col. .L	Redlands Univ. -----W	Jamestown College .L
Western State T. --W	Okl. Baptist Univ. .L	Kent, Ohio -----W
Madison Teachers --W	Ouachita College ---L	Univ. Calif. L. A. .L
William Jewell Col. L	Kearney Teachers .W	Nebraska Wesleyan W
Michigan State Col. W	Univ. Akron -----W	Carroll College ----W
Bye	Parsons College ----L	Pittsburg Teachers .L

ROUND THREE

Nebraska Wesleyan W	Univ. of Tulsa ----W	Baldwin-Wallace ---L
Rollins College ----L	Sterling College ----L	Missouri Valley ---W
Kirksville Teachers .L	Bethany College --W	Heidelberg College .L
Carroll College ----W	S. D. State -----L	Univ. of Redlands --W
Coe College -----L	Millsaps College ---W	No. Carolina State .L
Texas Christian U. W	Kalamazoo College .L	Col. of St. Thomas .W
Durant Teachers ---L	Parson College ----W	Henderson State ---L
Calif. Tech. Inst. --W	Eureka College ----L	Jamestown College .W
Baker Univ. -----L	College of Idaho ---L	S. W. La. Inst. ----W
Col. of Puget Sound W	Arkansas College --W	No. Central Col. ---L
Weatherford Teach. L	Ada Teachers -----W	Colorado Teachers .L
River Falls T. C. --W	Centre College ----L	Iowa Central -----W
Alva Teachers ----L	Univ. of Toledo ----L	Montana State -----W
Denton Teachers --W	Wheaton College --W	Ill. State N. U. ----L
Univ. of Wichita ---L	Missouri Central ---W	Penn College -----W
Madison Teachers .W	Ozark College -----L	College of Pacific .L
Edmond Teachers --W	Kearney Teachers .W	Cape Girardeau T. .L
Maryville College .L	Harding College ----L	Gustavus Adolphus W
Emporia Teachers ---L	Colby College -----L	William Jewell! Col. W
S. D. Wesleyan ----W	Augustana -----W	Washburn College --L

Morningside College W	Park College -----W	Pittsburg Teachers W
Trinity Univ. -----L	Fort Hays Teach. ---L	Okla. City Univ. ---L
Simpson College ---W	Westminster -----W	Hastings College ---W
Sam Houston Teach. L	Ouachita College ---L	McKendree College .L
Western State -----L	Western Union ----W	Okla Baptist -----W
Michigan State ----W	Grove City -----L	Akron -----L
Kent State -----L	Culver-Stockton ----W	Southwestern -----L
U. C. L. A. -----W	Kansas Wesleyan --L	Aberdeen Teachers W
Ottawa Univ. -----W	Drake Univ. -----L	Denton -----L
Yankton College ---L	Baylor Univ. -----W	Bowling Green ----W
Colorado Aggies ---W	College of Emporia .L	
Ripon College -----L	Sioux Falls College W	
Maryville Teachers W	Cotner College -----W	
Univ. of Dubuque --L	Intermountain Union L	

ROUND FOUR

River Falls T. C. --L	S. D. Wesleyan ----W	Madison Teachers --L
Missouri Central ---W	Univ. of Toledo ----L	Simpson College ---W
Univ. of Dubuque --L	Okla. City Univ. ----L	Sterling College ----L
Colby College -----L	Kent State -----W	Maryville Teachers W
Augustana College .W	Bowling Green -----L	Baylor Univ. -----L
Pittsburg Teachers .L	Bethany College ---W	Cotner College -----W
North Central -----L	Missouri Valley ----W	Kansas Wesleyan .W
Durant Teachers ---W	Weatherford Teach. .L	Colorado Aggies ----L
Sam Houston Teach. L	Gustavus Adolphus .L	Texas Christian ----L
S. W. La. Inst. ----W	Wake Forest -----W	Hastings College --W
Ouachita College ---L	Col. of St. Thomas W	Aberdeen Teachers .W
Heidelberg Univ. --W	Ottawa Univ. -----L	Morningside College L
Col. of Puget Sound W	Iowa Central -----W	S. D. State -----W
Western Union ----L	Emporia Teachers --L	Drake Univ. -----L
Intermountain Union W	Centre College -----L	McKendree College .L
Edmond Teachers --L	Cape Girardeau T. .W	Ada Teachers -----W
Akron Univ. -----W	Maryville College --L	Ripon College -----L
Westminster -----L	Culver-Stockton ----W	Southwestern -----W
Jamestown College W	Washburn College --L	Michigan State ----L
College of Idaho ----L	Western State ----W	Univ. of Wichita --W
Arkansas College --W	Calif. Inst. Tech. --W	College of Ozarks --L
Baker Univ. -----L	Park College -----L	No. Carolina State .W
Univ. of Redlands .W	Kalamazoo College .L	I. S. N. U. -----W
College of Emporia .L	Univ. of Tulsa ----W	Penn College -----L
U. C. L. A. -----W	College of Pacific --L	Harding College ----L
Rollins College ----L	William Jewell ----W	Okla. Baptist -----W
Grove City -----L	Trinity Univ. -----W	Eureka College ---W
Baldwin-Wallace ---W	Montana State ----L	Kearney Teachers --L
Sioux Falls College W	Hays Teachers ----W	Nebraska Wesleyan W
Coe College -----L	Colorado Teachers --L	Alva Teachers -----L
Denton Teachers --W	Carroll College ----L	Wheaton College --L
Kirksville Teachers .L	Henderson Teach. --W	Millsaps College ---W
Yankton College ---W		
Parsons College ----L		

ROUND FIVE

Rollins College ----W	Henderson Teach. --W	Baldwin-Wallace ---W
Okla. City Univ. ----L	Denton Teachers ---L	Col. of Puget Sound L
William Jewell ----W	Baker Univ. -----L	Western Union ----L
I. S. N. U. -----L	Jamestown College W	Arkansas College --W
Simpson College ----L	Wake Forest -----W	Weatherford Teach. W
Michigan State ----W	Centre College -----L	Grove City -----L
Ada Teachers -----L	Durant Teachers ---L	Ottawa Univ. -----W
Texas Christian U. W	Sam Houston T. ---W	Col. of Ozarks -----L
Penn College -----W	Univ. of Tulsa -----L	Culver-Stockton ---W
Trinity Univ. -----L	Wheaton College ---W	Intermountain Union L
Coe College -----L	Kirksville Teach. ---L	Edmond Teachers --L
Univ. of Redlands --W	Nebraska Wesleyan W	Baylor Univ. -----W
Univ. of Wichita --W	Central Missouri ---L	College of Idaho ----L
Washburn College --L	Missouri Valley ---W	Carroll College ---W
College of Emporia _W	Westminster Col. --L	Colorado Teachers _L
Quachita College ---L	Harding College ---W	Calif. Inst. Tech. --W
Park College -----L	S. W. La. Inst. -----L	Millsaps College ---W
North Central -----W	Madison Teachers _W	S. D. Wesleyan -----L
Bethany College ----L	Colby College -----W	Heidelberg Univ. ---L
Gustavus Adolphus W	Sterling College ----L	Akron Univ. -----W
Southwestern -----W	Hastings College ---L	Kearney Teachers --L
Kansas Wesleyan ---L	Sioux Falls College W	Yankton College ---W
Cotner College ----L	Colorado Aggies ---W	Parsons College ----L
S. D. State -----W	Maryville College ---L	Col. of St. Thomas _W
Drake Univ. -----L	Cape Girardeau ---L	Pittsburg Teachers W
Bowling Green -----W	McKendree College W	Univ. of Dubuque ---L
N. C. State -----W	Montana State -----W	Okla Baptist -----W
River Falls Teach. _L	Aberdeen Teachers _L	Eureka -----L
Maryville Teachers W	Morningside College _L	Kent State -----L
Kalamazoo College --L	Ripon College -----W	Augustana -----W
Univ. of Toledo ----L	Alva Teachers -----L	Western State -----L
Iowa Central -----W	U. C. L. A. -----W	College of Pacific --W
Emporia Teachers ---L		
Hays Teachers ----W		

ROUND SIX

U. C. L. A. -----W	Madison Teachers --W	Wheaton College --W
N. C. State -----L	Maryville Teachers _L	Univ. of Wichita ----L
Univ. of Akron ----L	Iowa Central -----L	Calif. Tech. -----L
Nebraska Wesleyan W	Univ. of Redlands --W	Southwestern -----W
Sioux Falls -----L	Bowling Green ----L	Gustavus Adolphus _L
Millsaps College ---W	Missouri Central ---W	Culver-Stockton ---W
Augustana College --L	Hays Teachers -----L	Michigan State ----L
Arkansas College ---W	William Jewell ----W	Bethany College ---W
Missouri Valley ---W		
Col. of St. Thomas _L		

ROUND SEVEN

North Central -----W	Culver-Stockton ----L	Col. of St. Thomas W
U. C. L. A. -----L	Madison Teachers _W	Bethany College ----L
William Jewell ----W	Nebraska Wesleyan L	Southwestern -----W
Augustana College _L	Wheaton College --W	Iowa Central -----L
Millsaps College ---W	Arkansas College --L	
Missouri Valley ----L	Univ. of Redlands _W	

ROUND EIGHT

Wheaton -----W	Madison Teachers -----L
Arkansas College -----L	Southwestern -----W
Missouri Central -----W	University of Redlands ---W
College of St. Thomas ----L	Millsaps College -----L
Missouri Valley -----L	
Nebraska Wesleyan -----W	

ROUND NINE

Millsaps College -----L	Nebraska Wesleyan -----L
William Jewell -----W	Missouri Central -----W
Southwestern -----W	University of Redlands ----
Wheaton -----L	Bye

SEMI-FINALS

William Jewell -----W	Missouri Central -----L
Southwestern -----L	Univ. of Redlands -----W

FINALS

University of RedlandsW	William JewellL
------------------------------	-----------------------

 ✕

 WATCH US GROW

Last Key No. 8198—Eleanor Johnson, Illinois State Normal University.

Last Membership card No. 10968—Jane R. Ingram, Illinois State Normal University.

WOMEN'S DEBATE TOURNAMENT

ROUND ONE

Madison Teachers ..L	I. S. N. U.W	Missouri CentralL
Southwestern Col. _W	Okla. BaptistL	Edmund Teachers ..W
Michigan StateW	Ripon CollegeW	Sioux FallsL
Iowa CentralL	Kansas Wesleyan ..L	College of Emporia _W
Macalester College _W	Yankton College ...W	Western StateL
Okla. A and M.L	Colorado AggiesL	Durant Teachers ..W
Nebraska Wesleyan L	U. C. L. A.W	AugustanaW
Park CollegeW	Harding CollegeL	Penn CollegeL
Redlands Univ.W	AshevilleW	MonmouthW
Emporia Teachers ..L	Okla. Col. for Wom. L	SterlingL
Wheaton CollegeL	College of Ozarks _W	Baylor CollegeL
Wichita Univ.W	Pittsburg Teachers _L	Alva TeachersW
Morningside College W	Simmons Univ.L	Hastings College ..W
Tulsa Univ.L	Simpson College ...W	McKendree College _L
Jamestown College _L	Colorado Teachers _L	Aberdeen Teachers W
St. OlafW	Ada TeachersW	Okla. City Univ.L
Bowling GreenL	MaryvilleW	Intermountain Union W
Bethany College ...W	Hays TeachersL	Kalamazoo College _L
Dakota Wesleyan ...L	East Texas Teach. _W	
Missouri Central ..W	Culver-StocktonL	

ROUND TWO

Southwestern Col. _W	Bye	Edmund Teachers _W
Intermountain Union L	Dakota Wesleyan ..W	East Texas Teach. _L
Iowa CentralL	Kansas Wesleyan _W	College of Emporia _W
Madison Teachers _W	I. S. N. U.L	North CentralL
Okla. A. & M.W	Colorado Aggies ...W	Durant Teachers ...L
Michigan StateL	Ripon CollegeL	Sioux FallsW
Park CollegeL	Harding College ...W	Bye
Macalester College _W	Yankton College ...L	Western StateW
Emporia Teachers _L	Okla. Col. for Wom. L	SterlingW
Nebraska Wesleyan W	U. C. L. A.W	AugustanaL
Wichita Univ.L	Pittsburg Teachers _L	Alva TeachersW
Redlands Univ.W	AshevilleW	MonmouthL
Tulsa Univ.L	Simpson College ...L	McKendree College _L
Wheaton College ..W	College of Ozarks _W	Baylor CollegeW
St. OlafL	Ada TeachersW	Okla. City Univ.L
Morningside College W	Bye	Hastings College ...W
Bethany College ...W	Hays TeachersL	Kalamazoo College _L
Jamestown College _L	Colorado Teachers W	Aberdeen Teachers W
Missouri Central ...W	Culver-StocktonL	
Bowling GreenL	MaryvilleW	