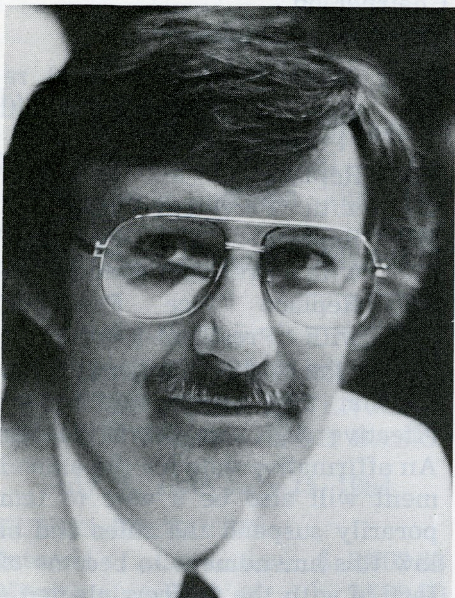


THE EDITOR'S REPORT

ANTHONY B. SCHROEDER, Editor of *The Forensic*



20 March, 1985
Editor's Report

Two concerns faced this editor two years ago when he assumed the role of editor, 1. the lateness of the Summer edition, and 2. a lack of articles.

With the advice and approval of the National Council, the Journal is now reviewed/refereed.

I am still having problems with chapters submitting news and notes about their activities, projects and accomplishments.

The Spring 1985 edition is mailed and if you did not receive it before you left for the National Convention/Tournament it will be there when you get to campus.

I am currently preparing review copy materials on manuscripts submitted that would be used in the

Fall edition. (Summer edition is devoted to the convention/tournament.)

The transfer of the second class permit is completed. The cost of the previous editions using the third class permit was generally around \$100.00. I mailed this edition for \$32.70.

I have been preparing a budget record on each edition published. This should give us a better idea of how much to budget for the Journal in the future.

I want to thank the individuals who have done the hard work of actually reviewing the materials; the editorial board: Michael Bar-tanen, Don Swanson, Dencil Taylor, Margaret Greynolds, Terry Cole, and Leanne Wolff.

Respectfully Submitted,
Anthony Schroeder



Larry Norton, retiring PKD Historian

PI KAPPA DELTA

PROVINCE COORDINATOR'S REPORT

For 1983-85 Academic Years

R. DAVID RAY, Province Coordinator



The following has been completed through the office of the Province Coordinator:

1. Province Coordinator Newsletters prepared and sent to Governors, Province Officers and members of the National Council bimonthly during the academic year

Contents:

- a. Announcements of upcoming events
- b. Results of meetings
- c. Ideas for the Province and local chapters
- d. Encouraged participation in the FORENSIC (articles, news, etc.)
- e. Encouraged participation of PKD schools to support Province and National Convention and Tournament

- f. Encouraged communication flow among all levels of the PKD structure
- g. Other information of note
2. Personal correspondence and telephone calls with Governor's Province Officers, and Chapter Sponsors
3. Questionnaires sent to Governors in an effort to elicit information for the FORENSIC and other matters of note
4. Promoted the exchange of ideas among Province Governors
5. Established early contact of Governors coming into office 1984
6. Distributed to Province Officers public relations items (Arkansas—buttons, stickers; Fayetteville—stickers, pamphlets) to promote the 1985 National Convention and Tournament
7. Informed the National Council of important information and activities within the Provinces.

Note: I wish to thank the Department of Communication Arts at the University of Arkansas at Monticello for its support of my PKD responsibilities as Province Coordinator. The department absorbed the cost of postage, duplication, telephone calls, secretarial assistance, and travel related to PKD.

Respectfully submitted,

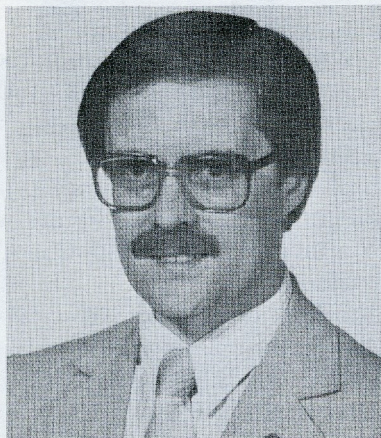
R D Ray

R. David Ray

CHARTER AND STANDARDS COMMITTEE REPORT

TERRY W. COLE, Chairperson

BRAD KENNY, DON BROWNEE, BOB DERRYBERRY



Current status of Pi Kappa Delta: 233 schools (-11 disaffiliations + 5 new charters + 2 alumni charters=229 schools or chapters)

I. NEW CHAPTERS

- a. Since the Estes Park Convention, five new chapters have chartered and two alumni chapters have chartered. California State Stanislaus has re-affiliated.
- b. The active charter file includes eight schools who are in various stages of charter preparation (one must wait a year to disaffiliate with DSR). (See list)
- c. Twenty schools have indicated an interest in PKD and have not processed charters at any stage to date. (Note list)
- d. Eleven schools have requested disaffiliation with Pi Kappa Delta—all but one have lost their forensics programs.

(MOTION) I MOVE THAT THE CONVENTION APPROVE THE

DISAFFILIATION OF THE FOLLOWING SCHOOLS: DOANE COLLEGE, CENTRAL METHODIST COLLEGE, GREENVILLE COLLEGE, NORTHERN ARIZONA, TEXAS CHRISTIAN UNIVERSITY, LAMAR UNIVERSITY, WRIGHT STATE UNIVERSITY, MARSHALL UNIVERSITY, UNIVERSITY OF MONTANA, FROSTBURG STATE, AND McPHERSON COLLEGE.

(The motion was approved by the convention.)

II. PROVINCE SURVEY

The Charter & Standards Committee is undertaking a survey of chapter and province status at the direction of the National Council. Survey forms were distributed at the convention to all chapters attending. The purpose of the survey is to consider the level of chapter activity and satisfaction with regard to its current province in order to gain the raw data to enable the National Council to undertake an examination of the provincial growth of the organization. With the growth of our organization, such an examination is warranted.

III. PRESENTATION OF NEW CHARTERS

PRAIRIE VIEW A & M UNIVERSITY (Texas Alpha Theta) Lower Mississippi 19 charter members
BARTLESVILLE WESLEYAN (Oklahoma Tau) Lower Mississippi 9 charter members

UNIVERSITY OF MISSOURI ST.
LOUIS (Missouri Psi) Missouri
6 charter members

UNION UNIVERSITY (Tennessee
XI) Southeast 7 charter mem-
bers

ARKANSAS TECHNOLOGICAL
UNIVERSITY (Arkansas Kappa)
Lower Mississippi 6 charter
members

MULENBURG COLLEGE ALUM-
NI CHAPTER (Alumni Chapter
#14) Colonies

HERMAN PINKERTON ALUMNI
CHAPTER OF TENNESSE
TECHNOLOGICAL UNIVERS-
ITY (Alumni Chapter #15)
Southeast

THE FOLLOWING SCHOOLS
ARE CURRENTLY IN VARIOUS
STAGES OF CHARTERING

University of Texas—San An-
tonio

Berea College (Kentucky)

Trinity University (Texas)

Southern University(Louisiana)

Winthrop College (South Caro-
lina)

Louisiana State University (cur-
rently DSR)

Morehead College (Kentucky)

Northern Kentucky University

THE FOLLOWING SCHOOLS
HAVE INQUIRED ABOUT MEM-
BERSHIP IN PI KAPPA DELTA

Duquesne University(Pennsyl-
vania)

California State University—Los
Angeles

University of West Florida

San Francisco State University

The University of California at
Berkley

Gallaudet College (Washington,

DC)

San Jose State University

Clark College (Georgia)

Syracuse University (New York)

Beloit University (Wisconsin)

Marquette University (Wiscon-
sin)

Fitchburg State College (Mass.)

Angelo State University (Texas)

University of North Dakota

St. Cloud State University (Min-
nesota)

Dickenson College(Pennsyl-
vania)

Southern Illinois Univ (reacti-
vate)

United States Military Academy
—West Point

Georgia College

Drexel University (Pennsylvan-
ia)

Southern Methodist University
(Texas)

Respectfully submitted,

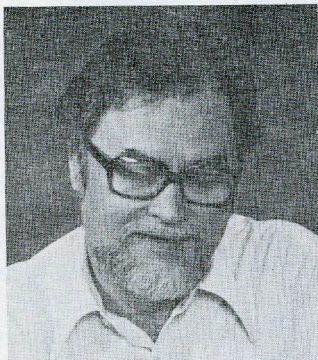
Terry W. Cole



SITE SELECTION COMMITTEE REPORT

JACK STARR, Chairperson

LARRY RICHARDSON, FRAN HASSENCAHL



This Site Selection Committee was appointed by the National President after the 1983 summer meeting of the National Council. It was charged with the task of submitting a recommendation for the 1987 National Convention and was given the following instructions and guidelines:

- I) The recommendation was to be ready for presentation at the 1984 summer meeting of the National Council.
- II) The search was to give first priority to finding a chapter that was willing and able to house the tournament aspects of the Convention on its campus during its spring break.
- III) The search should focus on a geographic area that could be roughly described as the north central portion of the nation.

Accordingly, a letter was drafted to chapter sponsors encourag-

ing them to submit a bid to host in 1987, and to seek the support of their Province for such a bid. This letter was sent in early 1984, to chapters in the Provinces of the Illinois, the Upper Mississippi the Lakes and the Colonies. The letter indicated the type of information regarding facilities which the chapters would need to submit with their bids; it also established a deadline of June 1, 1984 for the submission of such bids.

Two chapters submitted bids to the Chair of the committee for consideration. These came from UW-La Crosse and UW-Oshkosh; after evaluation of the information provided, it was the decision of the committee to recommend UW-La Crosse as its first choice as the 1987 site. This was submitted to the National Council at its meeting in mid-June, 1984. The committee provided the National Council with the information materials submitted by both La Crosse and Oshkosh. After deliberation, the National Council voted to accept the recommendation of the committee.

Therefore, Madam President, I move that this convention endorse the decision of the National Council and designate the University of Wisconsin-La Crosse as the host school for our next convention on March 18-21, 1987.

Respectfully submitted,
Jack Starr

1985 SCA CONVENTION PROGRAM REPORT

TERRY W. COLE, PKD Program Coordinator for the SCA Convention

PI KAPPA DELTA PROGRAMS SUBMITTED TO SCA:

The following programs have submitted to SCA under primary sponsorship of Pi Kappa Delta. (The cooperative participation of each of the other forensics organizations affiliated with SCA was sought in the total forensics program submissions. Thus, our programs carry the co-sponsorship of one or more other organizations and Pi Kappa Delta will co-sponsor programs of the other organizations. This joint sponsorship should strengthen the chances of our programs being accepted.)

"Watching the Forensic Coach at Work: Toward the Development of Coaching Theory"

Primary Planner—Carolyn Keefe
Co-Sponsor—NFA

The program utilizes actual coaching sessions on video tape recording the coaching activities of Todd Lewis (Biola University), Larry Schnoor (Mankato State University), and Carolyn Keefe, (West Chester State University). Following the demonstration each coach will explain his/her approach to coaching the poetry event.

* * *

"Applying Ethical Standards in Tournament Management"

Primary Planner—Robert Littlefield

Co-Sponsors—NFA, AFA

1. "The use of the Undergraduate student in Tournament Manage-

ment." Robert Littlefield ND-SU

2. "The Use and Abuse of the Hired Judge Pool"

Michael Nicolai, UW-Stout

3. "Selective Judging at Forensics Tournaments" Joyce Carey, UW-Eau Claire

4. "The Open and Closed Tabulation Room"

Gary Horn, Southwestern College

5. "Competing in Your Own Tournament: the Pros and Cons"

C. T. Hanson, NDSU

John Burtis, Concordia College (Respondent)

* * *

"The Transfer Student in Forensic Competition"

Primary Planner—James Pratt
Co-Sponsor—Phi Rho Pi

"The Current Regulations Governing the Participation of the Transfer Student in Forensics"

James Pratt (UW River Falls)

"Should Eligibility Rules be Established for Transfer Students?"

Pro: Suzanne Larson, Humboldt State U

Con: Tim Sellnow, Wayne State Univ.

* * *

"A Practical and Creative Examination of Tournament Financing"

Primary Planner—David Ray
Co-Sponsor—Phi Rho Pi

1. "Creative Methods for Reducing Tournament Costs"

David Ray, U AR-Monticello

2. "A Survey of Debate Fees, Funding, and Services at Forensic Tournaments"

Brenda Logue, Towson State

3. "A Survey of Individual Events Fees, Funding and Services at Forensic Tournaments"

Cindy Larson—Casselton, ND-SU

4. "Zero Based Budgeting vs. Profit in Tournament Management"

Rex Gaskill, Normandale Community College

Respondent and Chair: Clark D. Olson, Arizona State Univ.

Co-sponsored programs:

Critical Assessment of Presidential and Vice-Presidential Debates (with the Forensics Division)

Process of Change from One IE Perspective to Another (with the Forensics Division)

Practical Approaches to Coaching Novices (with NFA)

A Theory and Practice Program (with NFA)

Town-Hall Debate on the Issue of Joint Sponsorship of NFA-CEDA Resolutions (with AFA)

Theoretical Approaches to Value Debate (with CEDA)

Respectfully submitted,
Terry W. Cole



Tradition



Voting



Voting



Speaking Out

CONVENTION EVALUATION COMMITTEE REPORT

JOEL HEFLING, Chairperson
DAVID PROCTOR, MICHELLE DAMRON



Joel Hefling

Attached is the Convention Evaluation Committee report for the Pi Kappa Delta National Tournament and Convention held in Fayetteville, Arkansas, March 20-23, 1985. The items are arranged with comments about the convention first (items 1 and 2), then comments about the tournament (items 3-13), followed by comments about the convention/tournament as a whole (items 14-20), ending with specific requests to be considered by the Council (items 21 and 22).

The items on this report are not arranged in any preferential order, or in the order in which they were received. An attempt has been made to make the comments concise, combining several of a similar nature. Hopefully, editorializing has been kept to a minimum.

Overall, there seems to have been a strongly positive response to the convention and tournament. It apparently was a successful and rewarding experience for every-

one. From my perspective as a coach, Province governor, and staff member, it was one of the smoothest, most efficient, and rewarding PKD nationals that I have attended. Congratulations to all involved for a job well done!

Respectfully submitted,
Joel Hefling

Convention Evaluation
Pi Kappa Delta National
Tournament and Convention
Fayetteville, Arkansas
March 23-23, 1985

1) Cynthia Johnson is to be commended for her rendition of the national anthem, and Georgia Bowman's tastefully presented necrology report was noteworthy. However, the convention business meetings seemed to need a somewhat tighter time schedule. Despite the fact that many important matters are handled at the open-meeting, it did seem a bit lengthy from the point of view of both students and coaches. Perhaps a more obvious use of parliamentary procedure would be helpful, along with the possibility of publishing reports, instead of having them presented orally. A request was made to not have Province meetings on the first night. Those meetings could be held on Thursday and Friday nights, and perhaps be more profitable, since the students would have some idea of the business to come before the convention. Would it be possible to arrange the

schedule to have meetings *before* 9:00 or 9:30 at night? Tired bodies and tired minds didn't seem to produce many results at that hour after a long day.

2) There was whole-hearted approval of the concept of educational programs. However, it would be helpful to have those programs scheduled at a time when more people could attend. Even though the oral interp program was very well attended, it would be beneficial to keep the scheduling as clear as possible, in order to increase the availability of those programs. Presently, students or coaches who are involved in both debate and individual events find that it is not possible for them to attend the programs. Would it be possible to schedule them at a time when no rounds are being held? It would also seem to be advisable *not* to recommend sightseeing during the time those programs are held.

3) Judging requirements seemed to cause numerous problems. While some requests were for the number of judging slots to be reduced, there was some consensus that the requirements need to be more stringently enforced. Either judges *must* be provided or a higher judging fee should be assessed, with a possible limit set on the number of entries a school can enter without judges.

There was some objection from judges having to cross over from debate to individual events and from individual events to debate. If the judges want to judge in both

areas, they should be paid for judging in the area where they do not have any entries, and should indicate their willingness to judge in other areas before being assigned by the tournament staff.

There seems to be some inequity in the judging ratio. Coaches with only individual events entries can judge a maximum of 9 rounds, while coaches with individual events and debate both can judge 9 rounds of individual events and at least 6 rounds of debate.

It has been suggested that the Council should consider the possibility of *not* having two judges for each round of individual events, which would reduce the burden of providing hired judges on the host school and province.

4) Interest has been expressed that there might be a desire, on the part of students, to have some elimination rounds in individual events. Given the number of entries in most events, this would seem to necessitate the use of semi-final rounds *at least*. The tournament director has indicated that utilizing the final round concept would probably mean that debate and individual events would have to run simultaneously in order to maintain the three-day schedule. This would mean that students could not participate in both debate and individual events. Since that has long been the tradition of this national level tournament, such a move would then place this tournament on the same level with most other tournaments we attended throughout the year. See the

attached student survey results for the students' reactions to such a move. Those results indicate that the students prefer no elimination rounds.

Sentiment has also been expressed from the students' point of view that there are those who perform well in the pressure situation of a "final" round. However, the students can and will acknowledge the value of the consistency factor in three rounds *without* finals. The factor of uniqueness is prevalent, and that seems to be important to students and coaches alike.

5) The judging criteria on the ballots seems to be somewhat unclear. For many of the judges these criteria seemed to be unfamiliar, despite the fact that those criteria were published in the same issue of the *Forensic* as the tournament schedule. The criteria were followed in that issue with the rationale for their use which seemed to be a good idea.

6) Objections were raised to allowing students to double enter in individual events, which is a change from previous Pi Kappa Delta National Tournaments. That change is not viewed by everyone as positive, since it effectively reduces the number of audience members left in a round. Others, however, especially the students, like the possibility of double entering. Many students and coaches are accustomed to the practice anyway, and some of the students felt they performed better under that kind of pressure situation. It was felt to be especially beneficial

to double enter when teams have traveled the long distance involved to come to this tournament/convention. Somehow it seems prudent to "get your money's worth" with multiple entries.

A concession was suggested. If double entries are to be permitted, it would be extremely beneficial to the schedule and nervous systems to *not* cause the most havoc with the schedule.

There was also a suggestion that the interpretative events should be in separate groups, as should the prepared speech events. Having Prose, Impromptu, and Duo in the same group created some awkwardness. In order to help reduce the problems associated with double entries, following the AFA grouping of events might be helpful.

AFA:

1. Extemp, Persuasive, Duo
2. Prose, Impromptu, Informative
3. Poetry, Drama, ADS, CA

PKD:

1. Extemp, Persuasive, Duo
2. Prose, Impromptu, Duo
3. Poetry, Informative, ADS, CA

7) Pleasure has been expressed in the presence of Discussion at this tournament, and the participants liked having the rounds scheduled back-to-back. It would be helpful to clarify the parameters of that event, especially as to the role of the group leader, whether facilitator or contributor; and to clarify the ballots used for evaluating the discussions.

8) The time for individual events rounds needs to be extended to 1½ hours, especially with the double