

Reporting In

Province of Missouri and the Sioux

MARCH 28, 29, 30, 1968

Held at Sheraton Elms Hotel, Excelsior Springs, Missouri

Twenty-seven chapters in attendance

Special Feature: A mass initiation for new PKD members by Fred Goodwin, Member national Council; D. J. deLaubenfels, Governor, Province of Missouri; and Arthur Prosper, Governor, Province of Sioux. They were assisted by Georgia Bowman, immediate past president of PKD. SEVENTY-FOUR students were initiated. Believed to be the largest initiation ceremony ever conducted in PKD.

SUPERIORS — PI KAPPA DELTA PI PROVINCE

<i>Women's Discussions:</i>	Northern — Donna Brown, Dakota Wesleyan — Anna Teachout
<i>Men's Discussion:</i>	South Dakota State — Tom Klinkel
<i>Women's Debate:</i>	Augustana, South Dakota State
<i>Men's Debate:</i>	South Dakota School of Mines, William Jewell, Central State Missouri, University Missouri-Kansas City
<i>Cross Exam Debate (mixed):</i>	South Dakota School of Mines, Missouri Valley, Northeast Missouri State
<i>Men's Sweepstakes:</i>	South Dakota State, Westmar, William Jewell
<i>Women's Sweepstakes:</i>	Augustana, William Jewell
<i>Men's Oratory:</i>	Dakota Wesleyan — Rich Whitney, Drake — Herb Cawthorne, William Jewell — Art Campbell
<i>Women's Oratory:</i>	General Beadle — Mary Ellen Wagoner, Westmar — Suzanne Hartmann
<i>Men's Extemp:</i>	Black Hills — Craig Christensen, Northern State — David Hilgeman
<i>Women's Extemp:</i>	Wm. Jewell — Catherine Winfrey
<i>Men's Interp:</i>	Drake — Herb Cawthorne, Simpson — Ron Nichols
<i>Women's Interp:</i>	Augustana — Joyce Estwick, Northern State — Joanne Glasow
<i>After Dinner Speaking:</i>	Augustana — Linda Heidemann, Augustana — Dee Libra, Evangel — Carolyn Rudy

NEWS FROM THE NORTHWEST PROVINCE OF PI KAPPA DELTA

Reporter: Larry K. Hannah

At the April meeting of the Northwest Province of Pi Kappa Delta held at the Shore Lodge in McCall, Idaho, a province constitution was ratified by the province members. Unique to this constitution was the creation of the office of Student Lieutenant Governor of the Province. After a considerable amount of heated campaigning, the membership elected Allan Loudon of Montana State University as its charter Lieutenant (student) Governor. Allan, a native of Kalispell, Montana, is now beginning his junior year at Montana State University, Bozeman, majoring in government and history with the eventual intent of attending law school. He has been a member of the Montana Beta chapter of Pi Kappa Delta for two years. In addition to his work in Pi Kappa Delta, he is a member of the MSU Student Senate holding the office of Commissioner of Forensics and recently was campus chairman for the "Choice of '68" national college primaries.

Allan's initial statement includes the following comment, "As a student officer it is my hope that I can be a link between

the coaches and the participants; I hope that I will be approachable at all times in hearing the students' problems and perhaps will be able to get some results."

Allan has set the goal for himself of contacting all Northwest Province chapters to secure their suggestions and comments for improving the 1970 Province convention. The best wishes of the Province go with him in establishing worthwhile precedents as the charter Student Lieutenant Governor. Allan's forensics coach is former *Forensic* editor, Professor L. A. Lawrence.

Announcing

CONVENTION FEES

TEMPE, ARIZONA

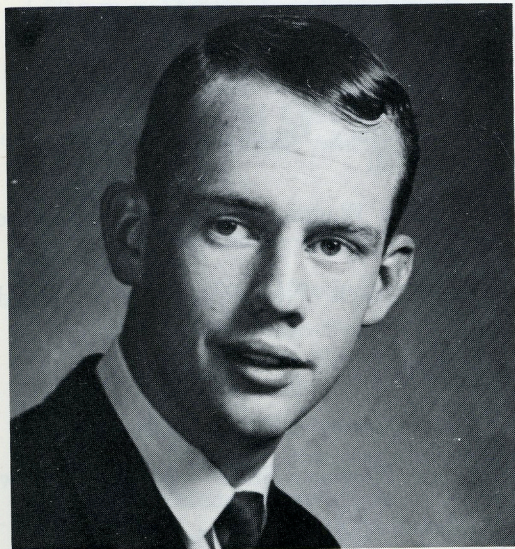
Package Price

- \$ 8.34 Registration fee
- 11.60 Meals, Monday evening through Friday evening, including the banquet.
- 17.06 Lodging for 5 nights, four in a room, Monday through Friday at the Ramada.
- 1.00 To be applied toward special bus transportation to and from the Ramada. (To campus in the morning and to Ramada in the evening).

\$38.00

Note: If less than four persons are assigned to a room, cost of lodging will be proportionately higher.

The registration fee is paid by one coach and all students representing each chapter. All delegates pay other fees.



Allan Loudon, Student Lt. Governor
of the Northwest Province

Province of the Plains

Nineteen colleges and universities competed in the Pi Kappa Delta, Province of the Plains Tournament and Convention held at Fort Hays Kansas State College, March 29 and 30. Dan Miller, Director of Forensics at Fort Hays, was elected Governor of the Province for 1968-69.

Other new officers for the Province include Bob Kunkel of Kearney (Neb.) State College, Lieutenant Governor; and Don Swanson of Southern Colorado State College, Secretary-Treasurer.

Winning the Sweepstakes Trophy in Men's Division was Southwestern College of Winfield, Kansas. Top point getter in Women's Division and winner of the Sweepstakes trophy was Southern Colorado State College, Pueblo, Colorado.

Additional awards of Superior in Sweepstakes went to: Men's Division, Adams State College, Alamosa, Colorado, and Southern Colorado State College, Pueblo, Colorado. Women's Division, Kansas State College at Pittsburg, and Western State College, Gunnison, Colorado.

A total of seventeen Superior awards were given in debate, discussion, and individual events. In debate, two men's teams ranked Superior: Southwestern College and Fort Hays Kansas State College. The Superior women's team award went to Western State College, Colorado.

National Vice President of Pi Kappa Delta Francis Short, Kansas State College, presents Women's Sweepstakes Trophy to Southern Colorado State College.



In discussion, Miss Osborn of Midland Lutheran College, Fremont, Nebraska, Gutjahr of Adams State College, and Ferro of Colorado State College won Superior ratings.

Schlee of Kansas State College and Barber of Fort Hays Kansas State College were the two Superior women extempers. In men's extemp, Superior awards went to Farmer from Kansas State College and O'Neil from Western State College at Gunnison, Colorado.

In women's oral interpretation, Superior ratings were won by Pastory from Southern Colorado State College and De Mai of Western State College (Colo.). Taking the Superior honors in men's interp were Campbell of Southern Colorado State College and Klassen of Bethel College, Bethel, Kansas.

The Superior award in women's oratory went to Salerno of Southern Colorado State College and in men's division, the same rating was won by Schmidt of Midland Lutheran College and Unruh of Bethel College.

An executive committee was appointed by newly elected Governor Miller to complete the revisions of the Province Constitution, and planning is already underway to assure strong participation by the Province of the Plains in next year's National Convention and Tournament.

The Men's Sweepstake Trophy goes to Debate Coach Don Ewholm of Southwestern College at Winfield, Kansas, as presented by National Vice-President H. Francis Short.





SUPERIORS — SWEEPSTAKES

1st row (l to r) Catherine Winfrey, Wm. Jewell, Luanne Wood, Wm. Jewell, Joyce Estwick, Augustana, Claudia Svarstad, Augustana, Dee Libra, Augustana, Linda Hidemann, Augustana, Joyce Estwick, Nancy Wheeldon, Augustana.

2nd row (l to r) Mike Reardon, Wm. Jewell, Spencer Miller, Wm. Jewell, Art Campbell, Wm. Jewell, Craig Miller, Westmar, Ted Sauter, Westmar, John Hause, Westmar, Don Sinclair, SDSU, Dale Morse, Westmar.

3rd row (l to r) Larry Hamlin, SDSU, Bryan Cornelius, SDSU, Ron Aho, SDSU, Jim Darby, Westmar, Tom Klinckel, SDSU.

OFFICERS ELECTED — PROVINCE OF MISSOURI

(l to r) John Johnson, Drake, Secretary-Treasurer, Jerry Winsor, Northwest Mo. State, Governor, Harold P. Sampson, Central Mo. State, Lt. Governor.

OFFICERS ELECTED — PROVINCE OF SIOUX

(l to r) K. Don Tibbetts, Augustana, Lt. Governor, Arthur Prosper, Black Hills State, Governor, Matt Campbell, Dakota Wesleyan, Secretary-Treasurer.



Province of the Lower Mississippi

REPORTER: C. L. FARR

Award winners in Pi Kappa Delta Province Meet, 1968:

Superior Medal Winners:

EVENT

<i>Discussion:</i>	Lolly Buxton — Southwestern Louisiana Pat Bissonnet — Centenary
<i>Oratory:</i>	Dennis Paul — S.F. Austin Sam Biscoe — North Texas State Diana Ferrell — Baylor
<i>Extemp:</i>	George Edwards — Harding Mike Miller — Houston
<i>Oral Interp:</i>	Dennis Paul — S.F. Austin Ray Rogers — Northwestern Louisiana Nancy Martin — Northwestern Louisiana (2 medals per school)
<i>Debate:</i>	Houston
<i>Cross Exam:</i>	Stephen F. Austin
<i>Women's:</i>	Texas Christian
<i>Men's:</i>	

SWEEPSTAKES

<i>Men's</i>	S. F. Austin
<i>Women's:</i>	Baylor
	S. F. Austin
<i>Overall Winner:</i>	S. F. Austin

Province of the Pacific, Yosemite National Park

MARCH 21-23, 1968

AWARD RESULTS

(Superior and Excellent Ratings Only)

SWEEPSTAKES HONORS

Excellent Ratings

SAN DIEGO STATE COLLEGE
ARIZONA STATE UNIVERSITY
SAN FERNANDO VALLEY STATE

Superior Ratings

UNIVERSITY OF THE PACIFIC
FRESNO STATE COLLEGE

Interpretation — Upper

Excellent Ratings

MIKE FAGER
University of the Pacific
BARBARA O'CONNER
San Fernando Valley State
JENNIFER WALDRON
Fresno State College

Superior Ratings

RON CAPP
Fresno State College

Interpretation — Lower

Excellent Ratings

TEMPY CORNELIUS
San Diego State College
ALMA ALCALA
University of the Pacific

Superior Rating

ANN WALLACE
Fresno State College

Persuasive Speaking — Upper

Excellent Ratings

MICHAEL SMILOWITZ
Cal State, L.A.
JIM JOHNSON
Cal State, Hayward
JENNIFER WALDRON
Fresno State College

Superior Ratings

DONNA SCHIPPER
San Diego State College
JEAN BILLINGS
Pepperdine College

Persuasive Speaking — Lower

Excellent Ratings

ALMA ALCALA
University of the Pacific
LAURA GOLD
San Fernando Valley State
LES McNAMARRA
Nevada Southern University
ANITA JAMES
Fresno State College
ANN WALLACE
Fresno State College

Superior Ratings

JEFF KING
Fresno State College

Extemp — Upper

Excellent Ratings

GARY KRAUSS
Calif. Western University
BRUCE MEYERSON
Arizona State University

Superior Ratings

BRIAN WHITE
Fresno State College

Extemp — Lower

Excellent Ratings

JIM HITE
Arizona State University
HUGH LINSTROM
University of the Pacific
ROGER MILLS
Cal State, Hayward
RUSSELL HARVEY
Nevada Southern University

Superior Ratings

EVERETT HARRY
University of San Diego
RAY BECKER
San Fernando Valley State

Debate — Upper Division

Excellent Ratings

BRUCE MEYERSON
JEAN MILTON
Arizona State University
TED MATHEWS
BOB CURRAN
Loyola University
RAY BECKER
DON SHAPIRO
San Fernando Valley State
RON CAPPS
BRIAN WHITE
Fresno State College

Superior Ratings

DENNIS WARREN
STEVE BRYDON
University of the Pacific

Debate — Lower Division

Excellent Ratings

MARY TUMA
ALMA ALCALA
University of the Pacific
RUSSEL HARVEY
LARRY TRUNKEY
Nevada Southern University

Superior Ratings

JIM HITE
LARRY SEARER
Arizona State University
HUGH LINSTROM
BOB GREENSTREET
University of the Pacific

CHAPTER REPORTS

Fees paid and keys ordered August 1, 1967 to July 31, 1968

<u>SCHOOL</u>	<u>Fees and Certificates</u>	<u>Keys</u>	<u>Total</u>	<u>Refunds</u>
ALABAMA				
Alabama College				
ARIZONA				
Northern Arizona University	\$ 32.00		\$ 32.00	\$10.00
Arizona State University		\$ 26.05	26.05	
University of Arizona	60.00		60.00	
ARKANSAS				
Henderson State Teachers	10.00		10.00	
Ouachita College	10.00		10.00	
Harding College	60.00		60.00	
State College of Arkansas				
CALIFORNIA				
University of Redlands				
California Institute of Technology	40.00		40.00	
University of the Pacific				
University of California-Los Angeles				
Pepperdine College	40.00	15.93	55.93	
San Diego State College	110.00		110.00	
Pasadena College				
Chico State College				
Los Angeles State College				
Humboldt State College	40.00		40.00	
Fresno State College	70.00	22.05	92.05	
Loyola University	10.00		10.00	
San Fernando Valley State College	90.00		90.00	
California State College-Fullerton				
California State Polytechnic College	50.00		50.00	
California Western University	83.00		83.00	
California State College-Hayward	90.00		90.00	
University of California-Berkeley	50.00		50.00	
Sacramento State College	125.00		125.00	
Stanislaus State College	85.00		85.00	
COLORADO				
Colorado State University	80.00	7.55	87.55	
Colorado State College		11.10	11.10	
Western State College				
Adams State College	40.00	40.00	80.00	
Southern Colorado State College	93.00	62.10	155.10	
CONNECTICUT				
Southern Connecticut State College	2.00		2.00	
FLORIDA				
Stetson University	20.00		20.00	

IDAHO

College of Idaho			
Idaho State University	70.00		70.00
Northwest Nazarene College	50.00		50.00

ILLINOIS

Illinois Wesleyan University	175.00	109.41	284.41	
Eureka College	50.00		50.00	
Bradley University	140.00	45.50	185.50	
Monmouth College	30.00		30.00	
Illinois State University		17.55	17.55	
McKendree College				
North Central College		21.94	21.94	1.44
Wheaton College	138.75		138.75	
Western Illinois University	10.00		10.00	
Augustana College				
Northern Illinois University	151.00	5.25	156.25	
The Principia	60.00	51.30	111.30	
Eastern Illinois University	140.00		140.00	
Millikin University	62.50	41.85	104.35	
Southern Illinois University-Carbondale ...	40.00	12.75	52.75	
Illinois College				
Greenville College	30.00		30.00	
University of Illinois at Chicago				
Olivet Nazarene College				
Elmhurst College	20.00		20.00	
MacMurray College				
Southern Illinois University-Edwardsville .	50.00		50.00	

INDIANA

Franklin College	60.00		60.00	
------------------------	-------	--	-------	--

IOWA

Central College	10.00	10.16	20.16	
Morningside College		7.25	7.25	
Simpson College	63.00	8.00	71.00	
Upper Iowa University	61.00		61.00	
Coe College	50.00		50.00	
Westmar College	30.00		30.00	
Buena Vista College	30.00		30.00	
University of Dubuque	11.25		11.25	
Drake University	50.00		50.00	
William Penn College	125.00	8.70	133.70	
Luther College	60.00	47.55	107.55	
Wartburg College	53.00		53.00	
Northwestern College	75.25		75.25	

KANSAS

Ottawa University				
Washburn University				
Southwestern College	20.00		20.00	
Kansas State Teachers College-Emporia ...				
Kansas Wesleyan University				
Kansas State College-Pittsburg	70.00		70.00	
College of Emporia	50.00	13.25	63.25	

Baker University			
Sterling College			
Bethany College	10.00		10.00
Fort Hays State College	30.00		30.00
Bethel College	60.50	6.35	66.85
McPherson College	80.00		80.00
Tabor College			
KENTUCKY			
Georgetown College	20.00		20.00
Centre College		6.14	6.14
LOUISIANA			
Louisiana College			
Centenary College			
University of Southwestern Louisiana	130.00	7.93	137.93
Louisiana Polytechnic Institute	21.75		21.75
Northwestern State College	30.00		30.00
Southeastern Louisiana State			
McNeese State College	50.00		50.00
MAINE			
University of Maine	30.00		30.00
MARYLAND			
Towson State College	40.00		40.00
MICHIGAN			
Kalamazoo College			
Hope College	80.00	23.90	103.90
University of Detroit	70.00		70.00
Central Michigan University	100.00	22.85	122.85
Ferris State College	40.00		40.00
Northern Michigan University			
Detroit Institute of Technology			
MINNESOTA			
Macalester College			
St. Olaf College	60.00		60.00
Gustavus Adolphus College			
Hamline University			
College of St. Thomas			
Concordia College	30.00		30.00
St. Mary's College			
University of Minnesota-Duluth50		.50
Moorhead State College	103.00	28.58	131.58
Saint John's University			
MISSISSIPPI			
Millsaps College			
Mississippi State University	30.00		30.00
Mississippi State College For Women	80.00	42.00	122.00
University of Southern Mississippi	35.25	23.55	58.80
Mississippi College	70.00	36.75	106.75
Delta State College50		.50

MISSOURI

Westminster College			
Central Methodist College	60.00		60.00
William Jewell College	50.00	38.80	88.80
Culver-Stockton College			
Central Missouri State College	93.75		93.75
Northeast Missouri State College	50.00		50.00
Southeast Missouri State College	50.00	10.50	60.50
Northwest Missouri State College	75.00	30.85	105.85
Missouri Valley College	50.00	28.25	78.25
Drury College	30.00		30.00
Rockhurst College			
University of Missouri-Kansas City	80.00		80.00
Evangel College	52.50		52.50

MONTANA

Rocky Mountain College	30.00		30.00
Montana State University	30.00		30.00
Eastern Montana College	50.00		50.00
Carroll College	40.00	53.00	93.00
College of Great Falls	95.00		95.00

NEBRASKA

Nebraska Wesleyan University	83.75	9.50	93.25
Doane College			
Hastings College	30.00		30.00
Kearney State College	60.00	18.90	78.90
Chadron State College	10.00		10.00
University of Omaha	20.00		20.00
Wayne State College	40.00	32.35	72.35
Midland Lutheran College	40.00		40.00

NEW MEXICO

New Mexico State University			
Eastern New Mexico University			

NEW YORK

Ithaca College	60.00		60.00
State University College-Geneseo	40.00	26.25	66.25
State University of New York-Buffalo			
State Univ. of New York-Brockport	105.00		105.00

NORTH CAROLINA

Lenoir Rhyne College			
Appalachian State Teachers College			

NORTH DAKOTA

North Dakota State College-Minot	70.00		70.00
Dickinson State College			
North Dakota State University-Fargo	40.00		40.00

OHIO

Baldwin-Wallace College			
Heidelberg College			
University of Akron	40.00		40.00
Otterbein College	20.00		20.00
Marietta College	240.00	5.50	245.50

Bowling Green State University	50.00	32.65	82.65	
Kent State University	150.00		150.00	
Findlay College				
University of Dayton				
Mount Union College	20.00		20.00	
Youngstown University				
Ohio Northern University	160.00		160.00	
OKLAHOMA				
Oklahoma State University	40.00		40.00	
Oklahoma Baptist University				
Oklahoma City University				
East Central State College	40.00		40.00	
Southeastern State College	1.00	17.80	18.80	
Central State College				
Phillips University	40.00		40.00	
Southwestern State College	40.00		40.00	
Panhandle State College	20.00		20.00	
Bethany Nazarene College				
OREGON				
Linfield College	60.00		60.00	
Lewis and Clark College	50.00	15.80	65.80	1.00
Portland State College	175.75		175.75	
University of Portland				
PENNSYLVANIA				
Grove City College	30.00		30.00	
Bloomsburg State College	20.00	16.00	36.00	
Geneva College				
California State College		12.50	12.50	
Clarion State College				
East Stroudsburg State College				
SOUTH DAKOTA				
Dakota Wesleyan University	97.50		97.50	
Huron College	100.00	16.70	116.70	
Yankton College				
South Dakota State University	100.00		100.00	
Sioux Falls College	122.50		122.50	
Northern State College	42.50	71.27	113.77	
Augustana College	90.00		90.00	
General Beadle State College				
Black Hills State College	72.50		72.50	
Southern State College	20.00	37.00	57.00	
South Dakota School of Mines	50.00		50.00	
TENNESSEE				
Maryville College	50.00	13.80	63.80	
East Tennessee State University				
Tennessee Technical University	7.25		7.25	
Carson-Newman College				
Middle Tennessee State University	40.00		40.00	
David Lipscomb College	188.75	29.25	218.00	
Tennessee Wesleyan College				

TEXAS

East Texas State University	41.00	33.25	74.25
Howard Payne College	40.00		40.00
Mary Hardin-Baylor College	6.00		6.00
Texas Christian University	20.00		20.00
North Texas State University	70.00		70.00
Hardin-Simmons University	2.75		2.75
Baylor University	10.75		10.75
Stephen F. Austin College	50.00		50.00
University of Houston			
Texas A & I College	20.00		20.00
Abilene Christian College			
Midwestern University	40.00		40.00
University of Texas at El Paso			
West Texas State University	31.25	50.75	82.00
Texas A & M University			
Texas Lutheran College	50.00		50.00
McMurry College	31.00	6.00	37.00

VERMONT

Norwich University			
--------------------------	--	--	--

VIRGINIA

Old Dominion College	16.00		16.00
----------------------------	-------	--	-------

WASHINGTON

University of Puget Sound	10.00		10.00
Seattle Pacific College			
Whitworth College	40.00		40.00
Pacific Lutheran University	63.75	64.05	127.80
Western Washington State College	66.00		66.00
St. Martin's College			
Whitman College	90.00	11.95	101.95
Eastern Washington State College	155.00		155.00

WEST VIRGINIA

Marshall University	40.00		40.00
Morris Harvey College	40.00		40.00

WISCONSIN

Ripon College	60.00	5.41	65.41
Carroll College	90.00	10.50	100.50
Wisconsin State University-Oshkosh	128.00	55.30	183.30
Wisconsin State University-River Falls	60.00		60.00
Wisconsin State University-Whitewater	123.75	8.90	132.65
Wisconsin State University-Eau Claire	218.24		218.24
Wisconsin State University-Platteville	30.00		30.00
Carthage College	70.25	12.35	82.60
Wisconsin State University-Superior			
Stout State University	80.75	36.60	117.35

GENERAL CHAPTER

		37.59	37.59
--	--	-------	-------

PROVINCES

	82.03	249.71	331.74
--	-------	--------	--------

TOTALS	\$10,016.52	\$1,882.32	\$11,898.84	\$41.69
--------------	-------------	------------	-------------	---------

**FORMULA FOR
ACTIVE CHAPTERS**

1. Commit your school to make the trip next March.
2. Put aside budget for this trip.
3. Plan fund raising for more money.
4. Make the trip!

PLAN AHEAD!

**NATIONAL PI KAPPA DELTA
CONVENTION and TOURNAMENT**

**ARIZONA STATE UNIVERSITY
TEMPE, ARIZONA**

March 31 and April 1, 2, 3 and 4

1969

