

the green room of the Light Fine Arts building.

Kalamazoo's squads include men's varsity and men's and women's novice teams.

In addition to debating within the 17-member Michigan league—made up of state universities and private colleges—Kalamazoo's speech students expect to attend out-of-state meets at Illinois University, University of Chicago, Ball State College and Purdue University.

### CENTRAL MICHIGAN UNIVERSITY

The Theta Chapter of Pi Kappa Delta at CMU is pleased to announce that during the fall semester several of its members received various campus honors. In October, Sherry Arnoldink reigned as a member of the Central Michigan University Homecoming Court. Sherry was sponsored by the Zeta Tau Alpha social sorority and the Phi Sigma Epsilon social fraternity. Local Pi Kappa Delta members selected for Who's Who Among Students in American Colleges and Universities were James Bedore, Pris Dawe, William Primm, and Dennis Sporre. Joe Sweeney, another member of our chapter, is president of the student body this year.

Currently, members are busy planning the Christmas party and the initiation of new members. Both will take place on December 16, 1964, at the home of our advisor and his wife, Dr. and Mrs. Gilbert Rau. Approximately 17 new members will be initiated at this time. Dr. Moyne Cabbage will be the guest speaker. Dr. Cabbage is a former Pi Kappa Delta member from Eastern Michigan University and is presently a member of the CMU Speech staff.

We welcomed back 25 members at a Halloween party at the home of Mr. and Mrs. William Primm. Also introduced at this time were two transfer students: Barb Lichtenfelt is a transfer from the Pi Kappa Delta chapter at Eastern Michigan University and Allen Bartlett is a transfer from the chapter at Ferris State College.

CMU'ers are busily taking part in a number of speech activities. A number

of Pi Kappa Delta members took part in the annual Bradley University Speech tournament in November. CMU tied for first place with Coe College of Cedar Rapids, Iowa. Chapter members receiving special recognition at this event were: James Bedore, superior rating in discussion and excellent rating in extempore; Phil MacKay, excellent rating in oratory and after-dinner speaking; James Bedore also tied for second place among the 115 contestants in discussion. Terry Crosby and partner won 2 debates and lost 1 at the MISL Novice Debate Tournament recently.

Initial plans are in the making for the representatives who will be attending the national Pi Kappa Delta province at Tacoma, Washington, next spring.

### PACIFIC LUTHERAN UNIVERSITY

A successful trip to Pocatello, Idaho was made November 26-28. The PLU squad took sweepstakes in junior division at Idaho State College, along with Stanford, Brigham Young University and Claremont Men's College.

LaVon Holden placed first in impromptu. Lynn Still was second in interpretative reading. The two took first place in junior women's debate. Kathy Simantel, a PLU freshman, made the finals in extemp and impromptu.

Theodore O. H. Karl, National Council member, accompanied the group, aided by Dr. Abe Bassett, assistant professor of speech.

Terry Newberg, John Shoemaker, Bob Sievertsen, Tom Patrick and Mike McKean attended the W.S.A. tournament, helping to make PLU's junior debate squad one of the largest in the school's history.

The Student Congress, held October 24, was impressive and successful. Sandy Ellingson, Congress director, excelled in her position. Aiding Sandy was LaVon Holden, assistant director.

Senator Warren G. Magnuson gave the "State of the Union Address." A serious, yet optimistic speaker, he reminded the Congress of the work that had to be done in order to preserve our



democratic way of life. The students then adjourned for their sessions.

The highlight of PLU's forensic program for 1964-65 will be hosting the Pi Kappa Delta national tournament. All provinces and chapters in the area have pledged their support. Our own chapter is restricting this year's debate activities in order to fulfill its duties.

We look forward to seeing many of you this spring. In anticipation of your attendance, we extend wishes for a pleasant trip.

### **SOUTHERN CONNECTICUT STATE COLLEGE**

Southern Connecticut State College Beta is again pleased to participate as a chapter member in Pi Kappa Delta. Robert Cowles, our Forensic Union advisor and coach of previous years, has resumed full-time work toward his doctoral degree. Our new coach, Mary Jo Clark, has participated in forensic activities at Western Michigan University and Wayne State University. Officers for this year are the following: Dick Walsh, President; George Evanson, Vice President; Alice Dunlap, Secretary-Treasurer; and Sandra Chudy, Corresponding Secretary.

As in previous years, we have provided a high school forensic workshop in which 150 students from 20 schools participated. We plan on giving another high school workshop in May, which we hope will be as successful as our first one. At the successful Amherst Tournament, Southern Conn. placed third. We are proud of Claire Newman who received the third place award among affirmative debaters. Southern Conn. debaters have also participated in the University of Vermont Tournament. With our successful varsity debaters and our promising new debaters, we are looking forward to a busy and successful 1965 season.

### **SOUTHERN ILLINOIS UNIVERSITY**

On January 22, 23, 1965, our chapter will sponsor what is rapidly becoming the major debate tournament for high schools in all of southern Illinois. As a matter of fact, we are now beginning to draw teams from suburban Chicago and

several from central Illinois as well. Operating this tournament has proved to be quite a job for our Pi Kap members, but if nothing else it has certainly made them less critical of tournaments they attend on the college level.

Just one week later on January 30, we will host over 400 high school students for a full day of individual events competition. The state of Illinois is extremely active in all of the major individual events contests and we have found this "festival" to be somewhat of a lifesaver for schools that can't afford to travel 300 miles north to the areas where these contests are abundant.

Having hosted the "Golden" Anniversary Convention of Pi Kappa Delta two years ago, we here at Southern certainly plan to be in Tacoma, Washington for No. 51, and, of course, we extend our best wishes to friends of Pacific Lutheran.

### **EASTERN MICHIGAN UNIVERSITY**

Michigan Epsilon Chapter of Pi Kappa Delta, at Eastern Michigan University is currently working with the EMU Speech Union to promote on campus speech activities. We have established a Campus Forum program which invites all students of the University to air their grievances in an old-fashioned soap box oratory format. Speeches for these periodic programs are followed by discussion of the problems presented.

An effort is also being made to promote intramural speech contests at Eastern. Recently a campus-wide extemporaneous speaking contest with cash awards was sponsored thorough the Campus Forum program.

Pi Kappa Deltans at EMU are also readying themselves for spring initiation by reviewing the constitution and history of our organization so that members are better able to assist the pledges in their preparation for initiation.

Epsilon Chapter plans to send four members and two faculty to the national convention. We will be going by train from Ann Arbor to Chicago where we will catch the Pi Kappa Delta reserved train for Washington.



# Farewell To Navy Pier



The debate program was originated at the University of Illinois at Navy Pier in Chicago by Dr. Wayne N. Thompson in 1947. With the exception of one semester while on sabbatical, he directed the program for its first fifteen years. Dr. Thompson now directs graduate work in the Department of Speech at the University of Texas.

In 1962 the direction of forensics was taken over by Ted R. Jackson.

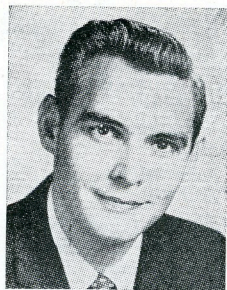
Debate, as well as education, will come to an end at the Pier when final exams are completed on January 23, 1965. On February 22 classes will begin at the completely new campus located on a 100 acre tract southwest of the loop in Chicago.

The Chicago division of the University of Illinois opened at Navy Pier in October of 1946. It has had a constant annual enrollment around 5000.

Dr. Thompson was responsible for bringing a chapter of PKD to the Pier in 1956.

More than 500 students have participated in forensics in the 17 year history of the program.

The Navy Pier Tournament has al-



TED R. JACKSON

ways been a novel experience for debaters. The campus consists of a long pier extending almost a mile into Lake Michigan. Debaters learn to walk at this tournament! The old Navy Pier tournaments will be remembered fondly by coaches and students alike.

The annual Freshman-Sophomore Debate Tournament has been one of the key features of the program. More than 50 colleges and universities have sent students to the early December tournament. Fifty-eight colleges from ten states attended the 17th and last tournament at the Pier on December 11-12.

---

## In Memoriam

**OSCAR H. INGRAM**—The Forensic regrets to announce that Dr. O. H. Ingram, head of the Department of Speech and Drama at Dakota Wesleyan University, died in St. Cloud, Minnesota, June 26, 1964. Dr. Ingram was born June 6, 1905. He received his B.A. and M.A. degrees from DePauw University and his Ph.D. from Denver University. He had served on the faculty of Kansas Wesleyan University, the University of Wisconsin, Purdue University, and had served as Director of Forensics at St. Cloud State College before his appointment at D.W.U.

---



# New Members of Pi Kappa Delta

## FRESNO STATE COLLEGE

37658 Donald Robert Gerig  
37659 Laurence Huff  
37660 Bobbie Maxwell  
37661 Irene Oliver  
37662 Carolyn Richards  
37663 Pete Squires

## THE COLLEGE OF IDAHO

37664 Peter Decker  
37665 Raymond G. Jayo

## SAINT MARY'S COLLEGE

37666 Douglas John Eichten

## CARROLL COLLEGE (WISC.)

37667 Ted Naffziger

## BALDWIN-WALLACE COLLEGE

37668 Peggy Faucett  
37669 Linda Sutliff

## WESTMINSTER COLLEGE

37670 James Clarke Kendall  
37671 Carlton T. King  
37672 George K. Parkins

## WARTBURG COLLEGE

37673 Walter D. Buenning  
37674 Judy Maxwell  
37675 Janice de Neu  
37676 Roger Prehn  
37677 Lois Reyelts  
37678 Susan Stueber

## COLLEGE OF ST. THOMAS

37679 George Joseph Annas, Jr.  
37680 Gregory Thomas Halbert  
37681 William Vincent Mainerich, Jr.  
37682 Thomas Robert Sheran

## TENNESSEE WESLEYAN COLLEGE

37683 Margaret Edds  
37684 Rachel Edds  
37685 Henry Richard Fine  
37686 James L. Gillespie  
37687 Franklin D. Grant  
37688 Judy Johnson  
37689 Ann Pratt  
37690 Curtis Sims  
37691 David L. Stapley

## ILLINOIS COLLEGE

37692 Kathleen McClay  
37693 James Reilly, Jr.

## DETROIT INSTITUTE OF TECHNOLOGY

37694 David C. Bingham  
37695 Don L. Johannes  
37696 Wayne R. Kilbourn  
37697 Donald Edwin Kilpela  
37698 John E. Lafer  
37699 L. Howard Rochte, Jr.  
37700 C. Carney Smith

## MILLIKIN UNIVERSITY

37701 William Edward Epperson  
37702 Cynthia C. Mickel

## SEATTLE PACIFIC COLLEGE

37703 Mary Lou Beall  
37704 Darrell Winston Udd

## TEXAS A & I COLLEGE

37705 Vincent C. Artale  
37706 John Raymond Furr  
37707 Barbara Nell Graham

37708 Barbara Nordmeyer  
37709 Gilbert Micheal Patterson  
37710 Lawrence W. Ryon

## ILLINOIS COLLEGE

37711 Ronald Ozier

## EAST TEXAS STATE COLLEGE

37712 Charles J. Bailey  
37713 Billy Duane Bell  
37714 Suzanne Click  
37715 John H. Cochran  
37716 Harvey R. Fails  
37717 Cleburne L. Farr  
37718 Ruth Lee Gracey  
37719 Jud Frank Hambrick  
37720 Lisbeth Arlene Morris  
37721 Ray Richey

## WISCONSIN STATE—OSHKOSH

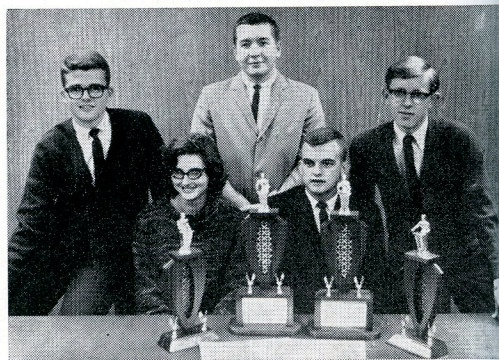
37722 Sandra Flentje  
37723 Tim Meyer  
37724 George Schriver

## MORRIS HARVEY COLLEGE

37725 Brendan T. Crowe  
37726 Mary Katherine Eller  
37727 Deborah Ann Gandee

## PANHANDLE A & M COLLEGE

37728 Paul Bonnifield  
37729 William Bonnifield  
37730 Melvin Paul Hammontree  
37731 Robert Nurdyke  
37732 Kay Pekarek  
37733 Dennis Smith



Mississippi State University director of debate, Brad Bishop (center), is flanked by his senior division debate team, host group for the first annual Mississippi State University Invitational Debate Tournament. In front are the trophies given to the first and second ranking teams in senior and junior divisions. Seated are Dot Leatherwood (left) and Kirk Shaw. Standing are Bill Alsop and Joe Turnage. Although the State debaters declared themselves ineligible to receive their own trophy, the team won first place in the senior division.



# Pi Kappa Delta Directory

The directory is as accurate as the information we have permits it to be. If the chapter line is blank, the secretary had received no reply to his request for this data by the time the material was sent to the editor.

State and College	Chapter President	Sponsor	Address
<b>ALABAMA</b>			
BETA—Alabama College	Robert Dabbs	Jeanne Graham	Montevallo
GAMMA—Spring Hill College		Bettie Hudgens	Spring Hill
<b>ARIZONA</b>			
ALPHA—Arizona State College		Harold Howard	Flagstaff
BETA—Arizona State University		William H. Stites	Tempe
GAMMA—University of Arizona		Jack H. Howe	Tucson
<b>ARKANSAS</b>			
ALPHA—Henderson State Teachers College	Marilyn Wells	Pearl Henson	Arkadelphia
BETA—Ouachita College		Jerry Reynolds	Arkadelphia
ZETA—Harding College		Evan Ulrey	Searcy
<b>CALIFORNIA</b>			
ALPHA—University of Redlands		E. R. Moulton	Redlands
GAMMA—California Institute of Technology	David H. Close	Herbert W. Booth	Pasadena
DELTA—University of the Pacific		Paul H. Winters	Stockton
EPSILON—U.C.L.A.		Clyde Williams	Los Angeles
ZETA—Pepperdine College		Vance Carruth	Los Angeles
ETA—San Diego State College	Carol Pederson	Jack Mills	San Diego
THETA—Pasadena College		James H. Jackson	Pasadena
IOTA—Chico State College	Bob Locke	Lloyd S. Jones	Chico
LAMBDA—Los Angeles State College		Robert Kully	Los Angeles
MU—Humboldt State College	Peggy Hansen	Edward D. Steele	Arcata
NU—Fresno State College	Jim Sandos	A. Kent Marler	Fresno
XI—Loyola University		George A. Schell	Los Angeles
OMICRON—San Fernando Valley State College	Jeff Sobel	Don Cameron	Northridge
PI—Orange State College		Lee E. Granell	Fullerton
RHO—California State Polytechnic College	Steve Tucker	David A. Church	Pomona
<b>COLORADO</b>			
ALPHA—Colorado State University		James A. Stitzel	Fort Collins
BETA—Colorado State College	Connie Barnett	Donald L. Holley	Greeley
GAMMA—Western State College		Ted Johnson	Gunnison
DELTA—Adams State College	Bernie Trujillo	Phillip Peives	Alamosa
EPSILON—Southern Colorado State College	Robert Garvey	Lloyd P. Dudley	Pueblo
<b>CONNECTICUT</b>			
BETA—Southern Connecticut State College	Richard Walsh	Mary Jo Clark	New Haven
<b>FLORIDA</b>			
BETA—Stetson University	Thomas Peters	Betty N. Mack	DeLand
<b>IDAHO</b>			
ALPHA—College of Idaho		Lester L. McCrery	Caldwell
GAMMA—Idaho State Univ.	Warren Derbidge	William N. Corbin	Pocatello
DELTA—Northwest Nazarene College		Earl R. Owens	Nampa
<b>ILLINOIS</b>			
ALPHA—Illinois Wesleyan Univ.	Dale Whitney	Marie J. Robinson	Bloomington
BETA—Eureka College		Alice G. Wilson	Eureka
DELTA—Bradley University	Doug Bock	George Armstrong	Peoria
ZETA—Monmouth College	William Hanford	Thomas Fernandez	Monmouth
ETA—Illinois State University		Stanley Rives	Normal
THETA—McKendree College		Annette M. Mulvany	Lebanon
IOTA—North Central College		Daniel J. O'Neill	Naperville
MU—Wheaton College	David Buffam	C. L. Nystrom	Wheaton
NU—Western Illinois Univ.	Nancy Setterberg	Raymond K. Tucker	Macomb
XI—Augustana College		Martin J. Holcomb	Rock Island
PI—Northern Illinois University		Herbert Hess	DeKalb



State and College	Chapter President	Sponsor	Address
RHO—The Principia		Clayton D. Ford	Elsah
SIGMA—Eastern Illinois University		Jon Hopkins	Charleston
TAU—Millikin University	Cynthia Mickel	Paul Wenger	Decatur
UPSILON—Southetrn Illinois University		Marvin Kleinau	Carbondale
PHI—Illinois College	James Reilly, Jr.	Raymond Ford	Jacksonville
CHI—Greenville College	George Coulter	W. Brock Brentlinger	Greenville
PSI—University of Illinois at Chicago	Carol Bachenheimer	Ted R. Jackson	Chicago
OMEGA—Olivet Nazarene College		Mac MacCombs	Kankakee
ALPHA ALPHA—Elmhurst College		John E. Gow	Elmhurst
ALPHA BETA—MacMurray College		Frank T. Alusow	Jacksonville
INDIANA			
ALPHA—Franklin College		John C. Zacharis	Franklin
IOWA			
BETA—Central College	Harold Wissink	Cunera Van Emmerik	Pella
DELTA—Morningside College		Hazel Heiman	Sioux City
EPSILON—Simpson College		R. J. deLaubenfels	Indianola
ETA—Upper Iowa University		Richard C. Clark	Fayette
THETA—Coe College		Lynn Engdahl	Cedar Rapids
IOTA—Westmar College	Neil Hindman	James Fletcher	LeMars
KAPPA—Buena Vista College	Alice Madsen	Gladys N. Kuehl	Storm Lake
LAMBDA—University of Dubuque			Dubuque
MU—Drake University		Ray Berrier	Des Moines
XI—Luther College		Harold Savnoe	Decorah
OMICRON—Wartburg College		Donald G. Douglas	Waverly
KANSAS			
ALPHA—Ottawa University	Jeff Cunningham	Michael S. Twedt	Ottawa
BETA—Washburn University		Charles Fulcher	Topeka
DELTA—Southwestern College			Winfield
ZETA—Kansas State College		Larry E. Larmer	Emporia
THETA—Kansas State College	Jack Sexton	H. Frances Short	Pittsburg
IOTA—College of Emporia	Martin Ritchie	Anthony J. Clark	Emporia
KAPPA—Baker University		Don V. Evans	Baldwin
LAMBDA—Sterling College	John Behrendt	Clayton C. Campbell	Sterling
MU—Bethany College			Lindsborg
NU—Fort Hays Kansas State Col.	Roger Moffett	James I. Costigan	Hays
XI—Bethel College		William E. Juhnke	North Newton
OMICRON—McPherson College		William D. Brooks	McPherson
PI—Tabor College		Kenneth Kornelsen	Hillsboro
KENTUCKY			
ALPHA—Georgetown College	Frank Baker	Ernest E. Hall	Georgetown
BETA—Centre College		West T. Hill	Danville
EPSILON—University of Louisville			Louisville
LOUISIANA			
ALPHA—Louisiana College		Charles A. Parker	Pineville
BETA—Centenary College	Mal Morgan	Ruth Alexander	Shreveport
GAMMA—University of Southwestern Louisiana	Theodore Haik	Roy D. Murphy	Lafayette
DELTA—Louisiana Polytechnic Institute		Paul Pennington	Ruston
EPSILON—Northwestern State College		Donald L. Graham	Natchitoches
ZETA—Southeastern Louisiana College			Hammond
ETA—McNeese State College		W. J. Casey	Lake Charles
MAINE			
BETA—University of Maine	Vernon Arey	Wofford G. Gardner	Orono
MICHIGAN			
ALPHA—Kalamazoo College		Richard S. Jackson	Kalamazoo
GAMMA—Hope College	Sue Radliff	M. Harold Mikle	Holland
EPSILON—Eastern Michigan Universtiy		Tom Murray	Ypsilanti
ETA—University of Detroit		Thomas H. Usher	Detroit
THETA—Central Michigan Univ.	James Bedore	Gilbert Rau	Mount Pleasant
IOTA—Ferris State College		Richard K. Cronk	Big Rapids
KAPPA—Northern Michigan Univ.	Richard Wendt	John Monsma	Marquette
LAMBDA—Detroit Institute of Technology		Ralph Chesebrough	Detroit



State and College	Chapter President	Sponsor	Address
<b>MINNESOTA</b>			
ALPHA—Macalester College		Roger K. Mosvick	St. Paul
BETA—St. Olaf College	Carol Brown	Theodore F. Nelson	Northfield
GAMMA—Gustavus Adolphus College		William Robertz	St. Peter
DELTA—Hamline University			St. Paul
EPSILON—College of St. Thomas	George Annas	James C. McCarthy	St. Paul
ZETA—Concordia College	Larry Bakken	Allwin D. Monson	Moorhead
THETA—St. Mary's College		Mona McMahon	Winona
IOTA—University of Minnesota		Ronald M. Brown	Duluth
<b>MISSISSIPPI</b>			
ALPHA—Millsaps College		Edward M. Collins, Jr.	Jackson
BETA—Mississippi State University	Kirk Shaw	Thomas Brad Bishop	State College
GAMMA—Mississippi State College for Women	Matha Maris	Harvey Cromwell	Columbus
DELTA—University of Southern Mississippi	David Swanson	Ben A. Chappell	Hattiesburg
EPSILON—Mississippi College		H. B. Todd	Clinton
ZETA—Delta State College			Cleveland
<b>MISSOURI</b>			
ALPHA—Westminster College	Gary Anderson	Calvin Stoney	Fulton
GAMMA—Central Methodist College		Brice J. Wilkinson	Fayette
DELTA—William Jewell College	Lloyd Harrell	Georgia Bowman	Liberty
ZETA—Culver-Stockton College		Ethel Kaump	Canton
ETA—Central Missouri State College		Charles E. Porterfield	Warrensburg
THETA—Northeast Missouri State College		Sherod J. Collins	Kirksville
IOTA—Southeast Missouri State College	Audrey Reynolds	Fred B. Goodwin	Cape Girardeau
KAPPA—Northwest Missouri State College	John Sherbo, Jr.	George A. Hinshaw	Maryville
LAMBDA—Missouri Valley College		Jerald A. Cunningham	Marshall
MU—Tarkio College			Tarkio
NU—Drury College		Robert L. Wilhoit	Springfield
XI—Rockhurst College		Larry G. Ehrlich	Kansas City
PI—University of Missouri at Kansas City		Walter H. Murrish	Kansas City
<b>MONTANA</b>			
BETA—Montana State College	Jim Goetz	L. A. Lawrence	Bozeman
GAMMA—Eastern Montana College			Billings
DELTA—Carroll College		C. W. Huber	Helena
<b>NEBRASKA</b>			
ALPHA—Nebraska Wesleyan Univ.	Don Crawford	Harold P. Sampson	Lincoln
GAMMA—Doane College	Richard Cowles	Andy Wolvin	Crete
DELTA—Hastings College	Sheryl Petersen	Clinton E. Nelson	Hastings
ZETA—Kearney State College	Leora Rider	Fred Phelps	Kearney
ETA—Chadron State College		Fran Wrage	Chadron
THETA—University of Omaha		Duane L. Aschenbrenner	Omaha
IOTA—Wayne State College		Robert G. Johnson	Wayne
KAPPA—Midland College	Marvin Jensen	Donald L. Wolfarth	Fremont
<b>NEW MEXICO</b>			
ALPHA—New Mexico State Univ.	Joseph Ferrante	Gordon R. Owen	University Park
<b>NORTH CAROLINA</b>			
DELTA—Lenoir Rhyne College		Russell Brown	Hickory
EPSILON—Appalachian State Teachers College	Brenda Wallace	Thomas L. Tedford	Boone
<b>NORTH DAKOTA</b>			
BETA—North Dakota State College		Dennis E. Winters	Minot
<b>OHIO</b>			
ALPHA—Baldwin-Wallace College	Mary Eislyer	James A. Ross	Berea
BETA—Heidelberg College		Archie M. Thomas, Jr.	Tiffin
DELTA—University of Akron		John T. Auston	Akron
EPSILON—Otterbein College	Linda Snyder	James Grissinger	Westerville
ZETA—Marietta College		M. Jack Parker	Marietta
ETA—Bowling Green State Univ.	Kevin Swick	Raymond Yeager	Bowling Green
IOTA—Kent State University		Harry Munn	Kent
KAPPA—Findlay College		Virgil G. Loman	Findlay
LAMBDA—University of Dayton		Harvey Henderson	Dayton
MU—Mount Union College	Caryl Woodring	Robert Tripp	Alliance



State and College	Chapter President	Sponsor	Address
<b>OKLAHOMA</b>			
ALPHA—Oklahoma State University		Leslie R. Kreps	Stillwater
GAMMA—Oklahoma Baptist University			Shawnee
EPSILON—Oklahoma City University		J. D. Hoover	Oklahoma City
ETA—East Central State College	Billy Ballard	D. J. Nabors	Ada
THETA—Southeastern State College		Douglas Duke	Durant
IOTA—Central State College		John Graham	Edmond
KAPPA—Phillips University		James M. Ladd	Enid
LAMBDA—Northeastern State College		Valgene Littlefield	Tahlequah
MU—Southwestern State College		James D. Sill	Weatherford
NU—Panhandle A & M College		Richard Walther	Goodwell
XI—Bethany Nazarene College		E. R. Tame	Bethany
<b>OREGON</b>			
ALPHA—Linfield College	Rick Thompson	R. D. Mahaffey	McMinnville
BETA—Lewis and Clark College		Neil Sabin	Portland
GAMMA—Portland State College	Jeanne Monahan	Ben Padrow	Portland
DELTA—University of Portland	J. Jay Lowery	Robert F. Beh	Portland
<b>PENNSYLVANIA</b>			
ALPHA—Grove City College		William Teufel	Grove City
DELTA—Bloomsburg State College	John Nattras	Melville Hopkins	Bloomsburg
EPSILON—Geneva College	Ted Blashe	David Eshelman	Beaver Falls
ZETA—California State College	W. Keith Clark	William H. Bos	California
ETA—Clarion State College	Bob Jannone	Roger Hufford	Clarion
<b>SOUTH DAKOTA</b>			
ALPHA—Dakota Wesleyan University		Oscar H. Ingram	Mitchell
BETA—Huron College	William Poppen	Edward Meyer	Huron
GAMMA—Yankton College		Joseph Mazza	Yankton
DELTA—South Dakota State University	Judy Flahaven	B. Aubrey Fisher	Brookings
EPSILON—Sioux Falls College		Walter R. Nickel	Sioux Falls
ZETA—Northern State College		Kenneth J. Erickson	Aberdeen
ETA—Augustana College		Clara Chilson Lee	Sioux Falls
IOTA—Black Hills State College		Arthur F. Prosper	Spearfish
KAPPA—Southern State College		John J. Kutilek	Springfield
LAMBDA—South Dakota School of Mines		H. H. Wells	Rapid City
<b>TENNESSEE</b>			
ALPHA—Maryville College		Arda Walker	Maryville
GAMMA—East Tennessee State University	Catherine Cain	Richard A. Hardin	Johnson City
DELTA—Tennessee Polytechnic Institute		William K. Floyd	Cookeville
EPSILON—Carson-Newman College		R. F. Conklin	Jefferson City
ZETA—Middle Tennessee State College	Robert Hutcherson	Lane Boutwell	Murfreesboro
THETA—David Lipscomb College	K. L. Fleming	Carroll B. Ellis	Nashville
IOTA—Tennessee Wesleyan College	Allen Dennis	William B. Yates	Athens
<b>TEXAS</b>			
GAMMA—East Texas State College		C. Lloyd Farr	Commerce
DELTA—Howard Payne College		Clarence T. McCord	Brownwood
EPSILON—Mary Hardin-Baylor College		Daniel McLallen	Belton
ZETA—Texas Christian University	Carol Patton	Dave Matheny	Fort Worth
ETA—North Texas State Univ.	P. L. Lawrence	William DeMougeot	Denton
THETA—Hardin-Simmons University		DeWitte T. Holland	Abilene
IOTA—Baylor University	Sandy Hendrick	Glenn R. Capp	Waco
MU—Stephen F. Austin College	Bob Ballew	Robert Capel	Nacogdoches
NU—Texas A & I College		C. L. Trainor, Jr.	Kingsville
XI—Abilene Christian College		Edward M. Brown	Abilene
PHI—Lamar State College		Arnold C. Anderson	Beaumont
CHI—Midwestern University	Paul Jones	Carroll Hickey	Wichita Falls
PSI—Texas Western College		Gene Reynolds	El Paso
OMEGA—West Texas State Univ.	Mary Lemmond	Edward E. Lewis	Canyon
<b>VERMONT</b>			
ALPHA—Norwich University	Harrison Picard	K. Wayne Wall	Northfield



State and College	Chapter President	Sponsor	Address
VIRGINIA			
BETA—Old Dominion College		Harold Eisenhuth	Norfolk
WASHINGTON			
ALPHA—Univ. of Puget Sound	Kenneth Watkin	Jack Kingsley	Tacoma
BETA—Seattle Pacific College	Mary Lou Beall	William Hansen	Seattle
DELTA—Whitworth College		Mark W. Lee	Spokane
EPSILON—Pacific Lutheran University	Linda Grill	Theodore O. H. Karl	Tacoma
ZETA—Western Washington State College	Clark Drummond	Lewis Bright	Bellingham
ETA—St. Martin's College			Olympia
THETA—Whitman College		Dean F. McSloy	Walla Walla
WEST VIRGINIA			
BETA—Marshall University	John Cross	B. W. Hope	Huntington
GAMMA—Morris Harvey College	Robert Edgar	Roselyn L. Freedman	Charleston
WISCONSIN			
ALPHA—Ripon College		Wayne Mannebach	Ripon
BETA—Carroll College		Harold C. Larson	Waukesha
GAMMA—Wisconsin State University		John Schmidt	Oshkosh
DELTA—Wisconsin State University	Tom Knutson	John A. Oostendorp	River Falls
EPSILON—Wisconsin State Univ.	John Madsen	Edna C. Sorber	Whitewater
ZETA—Wisconsin State Univ.	William Genrich	Grace Walsh	Eau Claire
ETA—Wisconsin State University	Gerald Dryer	Theodore N. Smith	Platteville
THETA—Carthage College	Patrick Persaud	Robert W. Evans	Kenosha



## Student Representatives Speak

With April only 4 months away it seems fitting that we greet each of you Pi Kappa Delta students through the pages of our own **Forensic**. As you know, we are your representatives to the National Council of Pi Kappa Delta and this gives each of you a direct voice in the affairs of our Fraternity.

We are very anxious to represent you and your opinions but we need your help and cooperation in order to be effective. So we call upon you to write to us and inform us of your feelings concerning amendment changes, Convention plans, or with any ideas you may have concerning our organization. We will in turn pass these thoughts on to the National Council and will discuss

them in the student meetings scheduled during the Convention.

It will indeed be a pleasure for us to greet you at Pacific Lutheran as our Northwest Province hosts all of you at the National Convention-Tournament. Until then we will be waiting to hear from you.

Sincerely,

Ruth Ellis  
Harstad 44  
Pacific Lutheran University  
Tacoma 44, Washington

Warren Derbidge  
177 Filmore St.  
Pocatello, Idaho



# How to Drive Your Colleagues Crazy

BETTE VOTE

Almost every debate squad has a member or two who seem to get their greatest joy out of life by making life miserable for the rest of the team. Of course, a few of the sulkier members will say that the nasty ones are just venting their hatred of the world on the forensics squad; yet, through experience, I have found that it is really quite a difficult art to be truly nasty and make life miserable for teammates.

My debate partner and I tested this theory on our squad for almost a year and a half, and our results were quite interesting as to the emotional stability of our squad. Although I am not in the least bit scientific, I feel that it is my duty to report our observations and methods of operation, in the hope that they may in some way assist **other** (female, preferably) debaters who sincerely believe that being nasty and making life miserable for people is truly one of the Finer Arts.

There are many different phases of Operation Nasty, but one of the best places to begin is in the car on the way to tournaments. After all, here is an entire squad practically under complete control. The average - sized car is just too small to hide in. About the only available hiding places are the glove compartment and the trunk, and I've found that most debaters are either too long - legged to fit in the glove compartment, or too blind to read their extemp magazines in the trunk.

There are two ways of being mean in a car; namely, employing obnoxious smells and obnoxious noises. My colleague and I have completely and thoroughly tried and tested these two methods and can sincerely and in good faith guarantee their effectiveness.

Excessive hair spray is a wonderfully obnoxious smell. Of course it is nicely ineffective on girls, but it drives the boys to gasps, coughs and wheezes. When employing this method it is al-

ways best to bring along an abundance of scarves, sweaters and mittens, at least when driving in the dead of winter, because often times the male-type members of the squad will think they can squelch the girls with quick-and-easy little "freeze - outs." With the woollens handy, girls, it won't take long for them to learn you can't be stomped on that easily.

About the next best "Smelly" available is cigarette smoke. Now this again isn't just too awfully effective if everyone in the car, including you, is a chain smoker. However, if you have thus far presented a sweet-and-innocent image, my colleague and I can guarantee that this, too, will be a helpful step in driving everyone buggy in short order time, especially if the male squad members are the protective, big - brotherly type.

The hazy smoke rolling across their eyeballs and down their throats is not that which bothers them. It is the SCANDAL of seeing YOU smoke! (Somehow they just never thought it possible) and by listening carefully, mumbled comments like "I really don't think they should . . . do you?" can be distinctly heard.

If the boys, however, are **not** the protective, big - brotherly type, they may haul out several horrible, ugly cigars. Then it is time for the girls to hold the freeze-out.

Once the car has been aired out and noses are back in proper working order, it is time to conduct a seminar on Noise. My colleague and I have found that it is usually the boys who provoke this in the first place, so we can take neither credit nor blame for introducing it in the succession of traumas during the trip.

Occasionally a squad will have a few "singers" — usually male. Now even my colleague and I can stand to hear "Drifting Along With the Tumbling Tumble Weeds" and "Down by the Old



Mill Stream" for one, entire grueling hour. But when the choral presentation extends for nine hours, or roughly between Billings, Montana and Rapid City, South Dakota, we jointly feel that it is time to take radical and immediate action.

We found, through a trial-and-error method, that the best way to discourage singing is by singing. Not nice singing, of course, just any old wild and weird shrieking will do quite nicely. Discordant tones do the job wonderfully, but anything that drowns out the thrumming weeds will suffice.

If the boys are the stubborn type, they may keep up their concert despite your jamming, in an effort to out-vibrate your vocal folds. Therefore it is sometimes best to save this battle plan until the trip **home**, where acute laryngitis the next day won't be quite so disastrous.

During the actual contest there are several miscellaneous ways of making yourself hated and still drive your colleagues crazy all at the same time. For instance, I found that keeping everyone waiting while you comb your hair is a wonderfully nasty trick. That always makes everyone very congenial, although often - times breakfast must be sacrificed for this.

Another method I have found most distinctly effective in throwing everyone into hysteria is to "forget" and

"lose" things. Inconsequential things, of course, like the first four pages of the first affirmative speech. The thing to do here is **plant** them in the boys' briefcases. That way you come out like a rose. Another thing that makes both coaches and motel owners very, very happy is to drag their motel room keys home with you. If you can pretend amnesia for a few weeks, the letters between the motel and your coach will prove to be most interesting.

One little thing that my partner and I thought would really throw our colleagues into fits of frenzy was to take the top trophy in every event we entered. The judges, however, did not quite see our point of view, so we dropped the plan. I do not recommend it as a sure - fire way of making other squad members unhappy.

As I stated at the beginning of this scientific report, all the battle plans listed herein have been tested and double - checked for absolute effectiveness. They have passed all tests and obstacles in actual practice.

Therefore, my colleague and I hereby affix our stamp of approval, guaranteeing that the hints listed herein will drive any or all squad members absolutely crazy within seven easy trips. In conclusion may I quote our motto: The art of nastiness-ruthless, and merciless.

## THE ART OF PERSUASION —BEAUTIFUL AND JUST



