

University of Southern California. Miss Walsh taught in the debate program of the Western Forensic Institute, sponsored by the University.

Mr. Jim Johnson, 1959 president of Wisconsin Zeta, is now an assistant in the department of speech at Cornell University, in Ithaca, New York. Miss Gretchen Solie is doing graduate work at the University of Wisconsin.

MEET OUR DISTINGUISHED ALUMNI

Ray A. Neumann, an honor graduate of Bradley University, class of 1938, is an alumnus of which Pi Kappa Delta can well be proud.

Currently, he is the vice-president of the First Federal Savings and Loan Institute of Peoria, an elected member of the Peoria City Council, the Director of the Peoria County chapter of the Boy Scouts of America, and the Governor and second vice-president nominee of the American Savings and Loan Institute, which enrolls over 22,000 savings and loan employees.



Mr. Neumann is the past president of several other organizations, national as well as local—the Peoria Junior Chamber of Commerce, the Peoria Advertising and Selling Club, the Bradley National Alumni Association, the Bradley Town and Gown Club, the Alumni Association of the Graduate School of Savings and Loans, and the Peoria County Young Republican Club.

His talents and hard work have been recognized many times. In 1948, Mr. Neumann was selected Peoria's Most Outstanding Young Man of the Year and in the same year was selected the outstanding Junior Chamber of Commerce member in the state of Illinois. He received the Zeta Pi Gold Key for outstanding business and civic leadership in 1956.

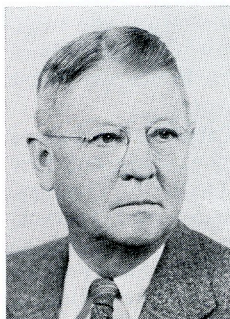
During four years of military service, he rose from private to major and spent 29 months overseas as Combat Officer of the 82nd Airborne Division. In addition, he saw 8½ months service on the general staff of General Matthew B. Ridgway. Mr. Neu-

mann holds six battle stars, one unit Presidential Citation, and decorations from the French, Holland, and Belgium governments.

As the wording of his many honors implies, Mr. Ray A. Neumann is certainly an "outstanding" alumnus of Bradley University and Pi Kappa Delta.

Huron College (South Dakota Beta) is proud of its distinguished alumnus, **Dr. Everett L. Hunt**.

Dr. Hunt is a 1913 graduate of Huron College. Immediately after graduation, he took over the speech program until 1918 when he went to the Speech Department of Cornell University. He is generally credited with establishing the fine tradition at Huron which continues with consistent strength to the present. (Last spring a team of Huron coeds took sweepstakes honors in the national PKD meet.)

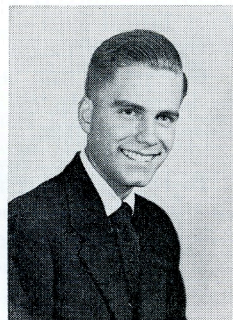


Meanwhile, Dr. Hunt has risen to national prominence in the speech field while at Cornell University and subsequently as Dean at Swarthmore College, Pa. He was honored at a dinner on December 28, 1959, during the proceedings of the national convention of the Speech Association of America in Washington, D. C.

Continuing to practice and excel in the art of persuasion, just and beautiful, is **Dr. W. David Zimmerman**, Midland College '55. He is instructor in American History and administrative assistant to Dean John N. Stauffer at Wittenberg University.

Dr. Zimmerman's forensic experience is being put to good use with his many varied duties which include serving as official host for guest lecturers, academic advising, and representing Dean Stauffer at meetings of faculty committees.

During his student days, he received state honors in debate and extempore speaking,



national PKD honors in discussion, participated on an undefeated debate team at the University of Nebraska, and served as student chairman of the Midland Debate Tournament in 1955.

David has earned scholastic eminence with an M.A. from the University of Nebraska and a Ph.D. from Cornell University in 1959.

Senator Gale McGee of Wyoming debated and "orated" for Nebraska State Teachers College at Wayne for four years, being graduated in 1936. His forensic activities in college assisted in establishing the eligibility of his school for a Pi Kappa Delta Chapter.



Later, the possessor of the Diamond Key in Order of Oratory, Debate, and Instruction, he returned to his Alma Mater to assist in the installation

of the Iota Chapter of Pi Kappa Delta.

Senator McGee received his M.A. from the University of Colorado and his Ph.D. from the University of Chicago.

He taught at Nebraska Wesleyan University, Iowa State University, Notre Dame University, and the University of Wyoming, where he served as chairman of the Institute of International Affairs.

In 1954 Senator and Mrs. McGee were at the head of a student study tour of allied unity in Western Europe. In 1956 the two of them visited Russia.

He was a popular lecturer during his academic career. At one time a *Denver Post* Editor said of him "without a doubt Wyoming's greatest public speaker."

One of his first Senate appointments was to membership on the Senate Appropriations Committee.

In things that a man would not be seen in himself, it is a point of cunning to borrow the name of the world; as to say, "The world says," or "There is a speech abroad."

—Francis Bacon

It was a common saying of Myson that men ought not to investigate things from words, but words from things, for that things are not made for the sake of words, but words for things.—*Diogenes Laertius*

Constitution of Phi Kappa Delta

(Continued from Page 20)

of Pi Kappa Delta shall obligate themselves to send a delegate to the first National Convention following the granting of their petition.

3. *Installation.* The National Secretary shall furnish each new chapter with a copy of the Installation Ceremony and full instructions concerning the rules and regulations of the society and the obligations of the Local Chapter to the National Organization. The new chapter shall pay the expenses of the officer sent to conduct the installation ceremony.

4. *Annual Initiation Ceremony.* It shall be the practice of each chapter to require all new members to take the initiatory obligation. A ritual initiation, approved by the National Organization, may be given each new member, but such initiation shall not be secret.

ARTICLE X—RULES OF ORDER

1. *Robert's Rules of Order* shall be the authority of this society in parliamentary procedure.

ARTICLE XI—AMENDMENTS

1. This Constitution may be amended at a regular National Convention by a two-thirds vote or by a three-fourths vote in the referendum initiated by the National Council and taken as provided for in Article V, Division C, Section 4 (b).

ARTICLE XII—EMERGENCY

When, by a three-fourths vote, the National Council shall determine that an emergency exists of such gravity as to make the holding of a national convention impossible or impracticable, then and in that event, the National Council may, by a two-thirds vote take any action necessitated by such emergency, notwithstanding anything contained in this constitution; provided, however, that any ten chapters may by joining in a written request to the Council, initiate a referendum of the chapters on any action taken by the Council hereunder.

When will talkers refrain from evil-speaking? When listeners refrain from evil-hearing.

—Hare

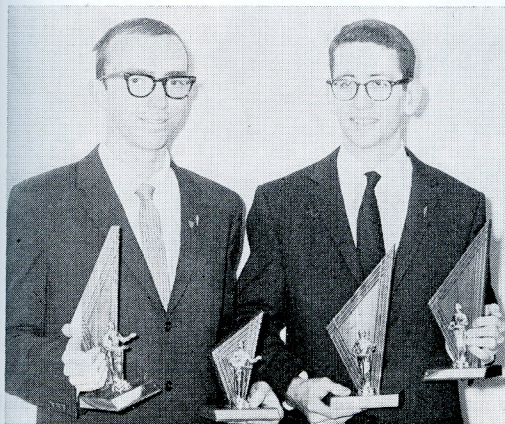
Chapter Notes

BAYLOR UNIVERSITY

Will host Texas A & M debaters and directors at a dinner discussion and public debate, which will be the first in a series of public discussions and debates . . . annual high school speech institute planned for June 13-July 1 . . . won Southwest Conference Debate League championship . . . will host invitational tourney on February 5-6 with 35 schools from 10 states expected.

BRADLEY UNIVERSITY

Forty-nine schools attended 13th annual invitational tourney on November 20-1 . . . officers are Michael Suleiman, president (from Jordan in the Near East); Roy Miller, vice-president; Sandra Schad, secretary, Lynn Spicher, treasurer; Kathe McCleave, corresponding secretary . . . have established an agenda of nine Pi Kap meetings with five committees and the preparation of a bulletin giving information about the local chapter and the national organization . . . discussing the revival of two former customs; the first is a Christmas party for high school students interested in forensics, and the second is a speakers' bureau . . . a tentative schedule of twenty tournaments, at least one every month from October to May.



California Institute of Technology debaters Dave Jefferson and Kip Thorne hold trophies, won at the Western States Association Forensic Meet, Stockton, California, November 21-23.

CALIFORNIA INSTITUTE OF TECHNOLOGY

Officers are Dave Jefferson, president and Kip Thorne, secretary. . . . Jefferson and Thorne were undefeated in the Western States Association meet at Stockton to win in senior men's debate. . . . Thorne also won second place in junior men's extemp . . . sophomore Gary Lorden and freshman Bill Cohen went undefeated at a tourney at Los Angeles City College to win superior awards in the junior division.

CENTRAL COLLEGE

Will sponsor the Turn-of-the-Semester tourney for Iowa schools . . . the joint provincial tournament of Illinois and Missouri provinces will be held at Central on April 7-8-9.

CENTRAL MISSOURI STATE COLLEGE

Officers are Nellie Bashore Dunnington, president; Wayne Brown, vice-president; Richard Thurston, secretary-treasurer . . . will have a speakers' bureau . . . serve as host for Missouri State Tournament on March 3-5 . . . will sponsor high school speech tourney.

CONCORDIA COLLEGE

Largest high school tourney in the sixteens years held with 52 four-man teams entered from 42 schools from four states . . . won unanimous judges' vote and audience shift in Great Northern Debate League competition against North Dakota Agricultural College when James Serkland and James Danielson won the affirmative of "Resolved, That Old Soldiers Should Fade Away."

UNIVERSITY OF DUBUQUE

Won five Certificates of Excellence at the Bradley University tourney . . . will sponsor the sixth annual speech festival for high schools of Iowa on March 18-19 with events in extempore speaking, debate, original oratory, oratorical declamation, radio speaking and oral interpretation.

EASTERN ILLINOIS UNIVERSITY

Officers are Gail Shadwell, president; Lois Rutan, vice-president; Bob Boyer, secretary-treasurer and Cecilia Bangiolo, historian . . . will host 23rd annual tourney on February 6 . . . discussion team won the University of Kansas Group Action tournament on October 23-24.

HOPE COLLEGE

Local chapter governed by women this year with Marianne Klaaren, president; Ann Herfst, vice-president; Ruth Van Der Meulen, secretary . . . will host the regional contest of the Michigan High School Forensic Association in April . . . oratory provided wins for Marianne Klaaren (2nd place) and Larry Izenbart (3rd place) at the Michigan Intercollegiate Speech League; and third places for Ruth Van Der Meulen and Eugene Boelte at the State Peace Association contest . . . in the

latter tourney Ron Chandler and Ann Herfst won thirds in extemp.

LINFIELD COLLEGE

Will sponsor two of the oldest invitational tourneys in the country with the twenty-eighth annual high school and the thirtieth annual college events in February and March respectively . . . members of the chapter will raise money by selling various items, judging in high school speech affairs, and promoting a tournament dance.

NORTH TEXAS STATE COLLEGE

Officers are Robert Clark, president; Ann Hodges, vice-president; and Al Conant, secretary . . . will host provincial tourney in April . . . held its second annual oratory contest wherein all campus organizations were invited to enter contestants speaking on the topic "What Changes Would Significantly Improve College Life at North
(Continued on page 30)



SLI FORENSIC WINNERS—Winning over student speakers representing thirteen colleges and universities from Louisiana, Texas and Mississippi at the Louisiana Tech College Forensic Tournament at Ruston were Southwestern Louisiana Institute students (from left to right, seated), Phyllis Miller, Abbeville; Dianne Derbonne, Lafayette; Jackie Dubois, Lafayette, and Garry DeBellevue, Crowley; (left to right, standing), John deBoisblane, Lafayette; John Melton, Lafayette, Winston Riddick, Crowley, and Charles Sonnier, Abbeville. The Southwesterners excelled in debate, oratory, extemporaneous speaking and interpretative reading to win the tournament.

Pi Kappa Delta Directory

The directory is as accurate as the information we have permits it to be. If the chapter line is blank, the secretary has received no reply to his request for this data by the time the material was sent to the editor.

<i>State and College</i>	<i>Chapter President</i>	<i>Sponsor</i>	<i>Address</i>
ALABAMA			
Alabama College		Ronald H. Denison	Montevallo
Spring Hill College			Spring Hill
ARIZONA			
Arizona State College	Gloria Valencia	William H. Stites	Tempe
ARKANSAS			
Ouachita College	Walter Rose	Thomas L. Tedford	Arkadelphia
Harding College		Evan Ulrey	Searcy
CALIFORNIA			
Redlands University	Paul Kirk	Gene Moulton	Redlands
Calif. Institute of Technology	David Jefferson	Dwight R. Thomas	Pasadena
College of the Pacific		Paul Winters	Stockton
U. C. L. A.		Wesley Lewis	Los Angeles
Pepperdine College		Fred L. Casmir	Los Angeles
San Diego State		John Ackley	San Diego
Pasadena College	Carol Drew	James H. Jackson	Pasadena
Chico State College		Lloyd S. Jones	Chico
Upland College		Ernest L. Boyer	Upland
L. A. State College	Richard Keil	Howard Holladay	Los Angeles
Humboldt State College	Gary C. Harber	Edward D. Steele	Arcata
Fresno State College			Fresno
Loyola University		Charles Masten	Los Angeles
COLORADO			
Colorado State University			Fort Collins
Colorado State College of Education	Karen Hadley	Ray L. DeBoer	Greeley
Western State College	Dale Bivens	Jess W. Gern	Gunnison
Adams State College		Bill Turner	Alamosa
FLORIDA			
Stetson University	Jacqueline Dossett	Mary Louise Gehring	DeLand
GEORGIA			
Georgia State College		Fred C. Tallant	Atlanta
IDAHO			
College of Idaho		Lester L. McCreary	Caldwell
Idaho State College	Lynn Thomas	W. N. Corbin	Pocatello
Northwestern Nazarene	Richard Benner	Mallalieu Wilson	Nampa
ILLINOIS			
Illinois Wesleyan University		Marie J. Robinson	Bloomington
Eureka College		Eugene W. Holmes	Eureka
Carthage College			Carthage
Bradley University	Mike Suleiman	Larry Norton	Peoria
Monmouth College		John Lama	Monmouth
Illinois State Normal University	Keith Loeffler	Stanley G. Rives	Normal
McKendree College		John W. McCain, Jr.	Lebanon
North Central College	John Senn	Glenn Reddick	Naperville
Wheaton College	David Clum	C. L. Nystrom	Wheaton
Augustana College		Martin J. Holcomb	Rock Island
Northern Illinois University		Herbet Hess	DeKalb
Illinois College	Bill Currie	Roy T. Baker	Jacksonville
The Principia		Clayton D. Ford	Elsah
Eastern Illinois University	Gail Shadwell	Jon Hopkins	Charleston
Millikin University	Jack Taylor	Elinor J. Gage	Decatur
Southern Illinois University	Keith Saunders	M. Jack Parker	Carbondale
Greenville College	Onva Boshears	W. Brock Brentlinger	Greenville
University of Illinois	Eileen Markham	Wayne N. Thompson	Chicago
Western Illinois University	Wallace Dralle	H. F. Schory	Macomb
INDIANA			
Franklin College	Roger Bailey	Alfred E. Rickert	Franklin
IOWA			
Central College	Paul Vander Kooi	Cunera Van Emmerick	Pella
Morningside College	Loren Andrews	Fred W. Lee	Sioux City
Simpson College		Leslie Bechter	Indianola

<i>State and College</i>	<i>Chapter President</i>	<i>Sponsor</i>	<i>Address</i>
Upper Iowa University	Sanford S. Sill	Richard C. Clark	Fayette
Coe College		George McCarty	Cedar Rapids
Westmar College		Alice Kruse	LeMars
Buena Vista College	Carol Coburn	Gladys N. Kuehl	Storm Lake
Dubuque University		Thomas H. Olbricht	Dubuque
Drake University		Ray Berrier	Des Moines
Luther College	John Bakke	Harold C. Svanoe	Decorah
KANSAS			
Ottawa University		Horton Presley	Ottawa
Washburn University		Dorothy Bishop	Topeka
Southwestern College	Alice Arnall	Jack H. Howe	Winfield
Kansas State College	Jane Shanks	Francis Short	Pittsburg
Kansas State College		Jim Trent	Emporia
Baker University	Richmond Enochs	Robert W. Sellen	Baldwin
Sterling College	Charles Kinyon	Clayton C. Campbell	Sterling
Bethany College		Anselm Johnson	Lindsborg
Fort Hays State College	Warren Norton	J. R. Start	Hays
Bethel College	Melvin Goering	Harley J. Stucky	N. Newton
McPherson College	Don Hollenbeck	Guy Hayes	McPherson
Tabor College	Paul Wiebe	Lando Hiebert	Hillsboro
College of Emporia		Glenn B. Phipps	Emporia
KENTUCKY			
Georgetown College		Don W. Zacharias	Pineville
Centre	Margaret Menger	W. T. Hill	Shreveport
Kentucky Wesleyan University		E. W. Ockerman	LaFayette
University of Louisville		Martin Stevens	Ruston
LOUISIANA			
Louisiana College			Natchitoches
Centenary College			Hammond
Southwestern Louisiana Institute	Gary DeBellevue	Roy D. Murphy	Lake Charles
Louisiana Polytechnic Institute		Wilma Baugh	Georgetown
Northwestern State College	Wanda Christian	Donald L. Graham	Danville
Southeastern Louisiana State		Norman J. Attenhofer	Owensboro
McNeese State College		W. J. Casey	Louisville
MAINE			
University of Maine	Joseph McKenna	Wofford G. Gardner	Ornon
MICHIGAN			
Kalamazoo College		Nelda K. Balch	Kalamazoo
Hope College	Marianne Klaaren	Robert L. Smith	Holland
Eastern Michigan College		Grant Wessel	Ypsilanti
University of Detroit	James R. Miller	Lawrence W. Rudick	Detroit
Central Michigan State College	Lynn Hagman	Emil R. Pfister	Mt. Pleasant
MINNESOTA			
Macalester College	Roxann Beihe	Roger Mosvidk	St. Paul
St. Olaf College		T. F. Nelson	Northfield
Gustavus Adolphus		Kyle Montague	St. Peter
Hamline University			St. Paul
College of St. Thomas		James C. McCarty	St. Paul
Concordia	Ronald Moen	John M. Burt	Moorhead
College of St. Catherine			Minneapolis
St. Mary's College		Roscoe Balch	Winona
University of Minnesota		Robert Haakenson	Duluth
MISSISSIPPI			
Millsaps	Charles Ricker	Edward M. Collins	Millsaps
Mississippi State College			State College
Mississippi State College for Women	Sue Cooper	Harvey Cromwell	Columbus
Mississippi College		H. B. Todd	Clinton
Mississippi Southern	Alan Land	Walter E. Simonson	Hattiesburg
MISSOURI			
Westminster	Thomas Baumgardner	John Randolph	Fulton
Central College	Lloyd Geiger	Janet Norberg	Fayette
William Jewell	Ron Walstrom	Georgia Bowman	Liberty
Culver-Stockton		Ethel Kaump	Canton
Central Missouri State College	Nellie Dennington	William R. Dodge	Warrensburg
Northwest Missouri State College	David Hargrave	George A. Hinshaw	Maryville
Northeast Missouri State College		Sherod J. Collins	Kirkville
Southeast State College	Jo Kay Donham	Fred B. Goodwin	Cape Girardeau
Missouri Valley College		Jerald A. Cunningham	Marshall
Tarkio College		Fred Patterson	Tarkio

<i>State and College</i>	<i>Chapter President</i>	<i>Sponsor</i>	<i>Address</i>
Drury College Rockhurst College		Robert L. Wilhoit R. J. Imbs	Springfield Kansas City
MONTANA			
Montana State College Eastern Montana State College	John Kearns Carol Brown	L. A. Lawrence R. C. Grover	Boseman Billings
NEBRASKA			
Nebraska Wesleyan University Doane College Hastings College Nebraska State College University of Omaha Nebraska State College Midland College	Sharon Hackett Faythe Johnson Linda Mann	Harold P. Sampson Virginia H. Floyd William I. Israel H. L. Ahrendts Aldrich K. Paul R. G. Johnson Donald L. Wolfarth	Lincoln Crete Hastings Kearney Omaha Wayne Fremont
NORTH CAROLINA			
Wake Forest College Lenoir Rhyne College Appalachian State Teachers	Richard L. Burleson	Franklin R. Shirley Albert Keiser Leo K. Pritchett	Winston-Salem Hickory Boone
OHIO			
Baldwin-Wallace College Heidelberg College Hiram College University of Akron Otterbein College Marietta College Bowling Green State University Findlay College Kent State University	Tony Sisti Miriam G. Shoffner Dan Salden Nancy Jeanne Myers David Reisdorf Ray Marvin L. Earnest Beresh	James A. Ross Archie M. Thomas William K. Clark Frank Alusow James Grissinger Ruth A. Wilcox Raymond Yeager O. J. Wilson James N. Holm	Berea Tiffin Hiram Akron Westerville Marietta Bowling Green Findlay Kent
OKLAHOMA			
Oklahoma State University Oklahoma Baptist University Oklahoma City University East Central State College Southeastern State College Central State College Phillips University Northeastern State College Southwestern State College Panhandle A & M College	Jim Hughey Glenn Sharp Wilma Jo George Douglas Duke	Leslie R. Kreps J. D. Hoover D. J. Nabors J. Rex Weir John Graham James Ladd Clyde G. Smallwood Bill Floyd Maurice F. Lokensgard	Stillwater Shawnee Oklahoma City Ada Durant Edmond Enid Tahlequah Weatherford Goodwell
OREGON			
Lewis and Clark College Linfield College Portland State College	George Lawson	Neil Sabin R. D. Mahaffey Ben Padrow	Portland McMinnville Portland
PENNSYLVANIA			
Grove City College	Hugh Blair	James Paton III	Grove City
SOUTH DAKOTA			
Dakota Wesleyan University Huron College Yankton College South Dakota State College Sioux Falls College Northern State Teachers College Augustana College Black Hills State Teachers College Southern State Teachers College	Larry Herker Bill McCleary Robert Anderson Karl Bareither Jerry W. Williams Carl Neumeister	Wayne E. Hoogestraat Edward Meyer Gene Knepprath Don Sikkink Randall M. Fisher Clara J. Chilson Barbara Kersten Virgina M. Edgett	Mitchell Huron Yankton Brookings Sioux Falls Aberdeen Sioux Falls Spearfish Springfield
TENNESSEE			
Maryville College East Tennessee State Tennessee Polytechnic Carson-Newman College Middle Tennessee State College David Lipscomb	Scott Pike Watson Hugh Denny Bill Nourse	Newell Witherspoon Charles M. Statham Harman Pinkerton Forrest L. Conklin Lane L. Boutwell Carroll B. Ellis	Maryville Johnson City Cookeville Jefferson City Murfreesboro Nashville
TEXAS			
Trinity University Howard Payne Texas Christian University Mary Hardin-Baylor College North Texas State	Neil Weatherhogg Frances Webb Robert Clark	McDonald Held Dave Matheny Nancy Fry William DeMougeot	San Antonio Brownwood Fort Worth Belton Denton

<i>State and College</i>	<i>Chapter President</i>	<i>Sponsor</i>	<i>Address</i>
Hardin-Simmons University	Jackie Krause McNew	Emogene Emery	Abilene
Baylor University	Judy Williams	Glenn R. Capp	Waco
Stephen F. Austin		Robert B. Capel	Nacogdoches
Texas A & I			Kingsville
Abilene Christian College	Paul Watson	Milton Copeland	Abilene
University of Houston	Emerson H. Turner	Gerard A. Wagner	Houston
St. Mary's University		Charles Myler	San Antonio
WASHINGTON			
College of Puget Sound		Charles T. Battin	Tacoma
Seattle Pacific College	Bonnie Loeffler	Paul F. Rosser	Seattle
State College of Washington		Remo Fausti	Pullman
Whitworth College	Margaret Ewell	Mark W. Lee	Spokane
Pacific Lutheran	James Traynor	Theodore Karl	Tacoma
Western Wash. College of Education	Bob Gustavson	Paul E. Herbold	Bellingham
St. Martin's College	Mike Hagan	Meinrad J. Gaul	Olympia
Whitman College	John Martin	Dean F. McSloy	Walla Walla
WEST VIRGINIA			
Marshall College	Walden Roush	B. W. Hope	Huntington
Morris Harvey		Walter H. Walker	Charleston
WISCONSIN			
Ripon College	C. Richard Johnson	Howard C. Hansen	Ripon
Carroll College		Harold C. Larson	Waukesha
State College	Rus Slicker	Edna C. Sorber	Whitewater
State College		John A. Oostendorp	River Falls
State College		William F. White	Oshkosh
State College	James Benson	Grace Walsh	Eau Claire

Chapter Notes

(Continued from page 26)

Texas?" Five faculty and administration members served as judges. The campus paper provided extensive coverage and editorials and the student government appointed committees to follow up on almost every problem cited by the various speakers. These events proved that a Pi Kappa Delta chapter can obtain publicity for itself by serving its own college community.

NORTHEAST MISSOURI STATE COLLEGE

Fifteen schools attended the twentieth annual Midwest Speech Tournament on December 4-5 with events in debate, selected poetry reading, original poetry reading and after-dinner speaking.

NORTHWEST NAZARENE COLLEGE

Emphasis being placed on public debates this year . . . more than 500 students and faculty attended a debate between Northwest Nazarene and the College of Idaho on the national question . . . next debate at the College of Idaho with additional public debates planned with other schools . . . have also been on TV with debate.

OTTERBEIN COLLEGE

Nancy Myers, president . . . hosted an annual Holiday Debate tourney December

12 with nineteen colleges from Ohio, Michigan and Indiana attending.

SOUTH DAKOTA STATE COLLEGE

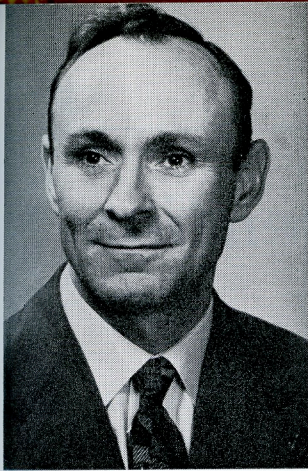
Sponsored their annual high school tourney December 11 and 12 with events in debate discussion, oratory and extemp. . . . Proceeds from the tournament are used as a speech scholarship for someone outstanding in forensics . . . first scholarship was awarded last year to Carolyn White, a transfer student from Nebraska Wesleyan.

SOUTHWESTERN LOUISIANA INSTITUTE

Have eighty students participating in First Year and Varsity Debate . . . only eight with intercollegiate experience. . . . Louisiana Speech Association held its Professional Conference and Speech Festival at SLI in December with more than one thousand participants and observers from forty colleges and high schools.

TEXAS COLLEGE OF ARTS AND INDUSTRIES

Reactivating its chapter under the direction of Mr. Keith Kennedy as debate coach and sponsor and George Haag as president . . . held a regional tourney on campus on December 11.



John Randolph

The Editor Signs Off

The printing of the Pi Kappa Delta Constitution in this issue may require some explanation, since—so far as I am aware—it has never been done before. Its publication, however, was voted last year by the National Council on two grounds: (1) it is hoped that giving this prominence to the Constitution in our magazine will lead to its being read by a larger number of members, and (2) by using the type already thus set up, a substantial saving can be achieved on the copies that we will need for the next year and a half.

The lead article in this issue is entitled "Bestness Has a Place"; obviously, it is an answer to Fred Goodwin's "This Business of Bestness," which was featured in our last issue. I make no bones about it; my sympathies are generally with Goodwin's arguments. But Richard Hildreth raises some points that are valid too. And even if I did not agree with a thing that he says, the columns of *THE FORENSIC* are always open to the other man's point of view.

It is a pleasure to report that the appeal of Associate Editor Les Lawrence for student contributions has not gone unanswered. In this issue can be found some pungent remarks by Phillips R. Biddle. Successive issues will carry other material which has come in or which has been promised. Let me add one final admonition to student scribes: keep it short. Two or three pages of typed copy can be just as effective as ten, if the ideas are put sharply and graphically. And please, no warmed-over oratory!

I wish the same thing could be said about my request for cover photos. The one on this issue is fine; it carries a word of hope to every coach who has ever wrestled with a refractory budget and a suggestion to every college graduate who is willing to acknowledge the tremendous benefits which he received from his forensic experiences. But the picture did not come from a student. Well, never mind; elsewhere in this issue will be found the announcement of a cover photo contest. Perhaps this will bring the gold out of them thar hills!

Associate Editors Frank Alusow and John Burt have received only a fairly satisfying amount of alumni and chapter news, not as much as last issue. Your chapter should be mentioned in each copy of *THE FORENSIC*; but there is no way in which we can give this kind of attention unless you help us. Appoint a responsible person as chapter reporter; such a person will not have to be prodded into replying to the reminders sent out well in advance of deadlines. Again: keep it short. But send us something.

The response to the October *FORENSIC* has been satisfying. Apparently, the innovations which we are trying please most of you. Currently, we are trying what we hope is an improvement in the management of alumni news by breaking it into two sections: one devoted to short accounts of our distinguished alumni and the other to notes of a more newsy nature. Let us know if you like the plan.

1961 National Convention Announced

OKLAHOMA STATE UNIVERSITY, STILLWATER, OKLAHOMA

SUNDAY, MARCH 26, THROUGH FRIDAY NOON, MARCH 31, 1961

Acting under the authority granted by the National Convention at Bowling Green, Ohio, in 1959, the National Council of Pi Kappa Delta has accepted the invitation of Oklahoma State University to hold the fraternity's 1961 National Convention at Stillwater, Oklahoma, March 26-31.

While details as to schedule are of necessity somewhat uncertain at this early date, some agreements which are final have been entered into, and announcement of these is made now so as to assist individual chapters with budget plans for the next college year.

It is hoped that this early announcement will make possible a 100 per cent chapter representation at the Convention. The central location of Stillwater should also assist in making possible the realization of such a goal.

Housing

Delegates to the convention may be housed in dormitories, fraternities, and sororities at a cost of \$10.00 for the five nights. Housing in the Union or in motels, hotels, etc., will be arranged for those who prefer it.

Transportation

For those who will travel by train, the most convenient station will be Perry, Oklahoma. Transportation from Perry to Stillwater will be provided at a small charge by the host school.

Meals

Meals will be served cafeteria style, and meal tickets will be good in several snack bars as well as in the main cafeteria. Total cost of all meals, including the convention banquet and a barbecue supper on Province Night will be \$14.00 for 14 meals. Sunday night meals are not included in this price.

Sunday Evening

Religious services will be held on Sunday evening, March 26.

Let's all start making plans now!