

THE FORENSIC

PEITHO KALE DIKAI

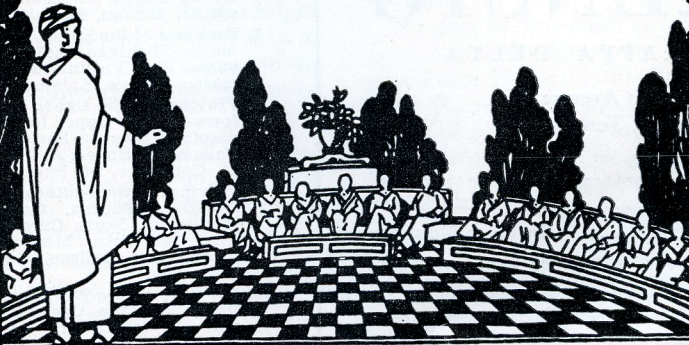
JANUARY 1953

Series 38

Number 2

IN THIS ISSUE

Michigan in the Spring	35
Convention and Contest Rules	39
The President's Message	42
From the Secretary's Desk	43
Professor Houston and Dr. Hess	44
The Charter Committee	47
Meet the Governors	49
Chapter Notes	51
Ridin' the Provinces	60



DIRECTORY

OF

PI KAPPA DELTA

National President—Roy D. Mahaffey, Linfield College, McMinnville, Oregon.

National Vice-President — John Randolph, Westminster College, Fulton, Missouri.

National Secretary-Treasurer — S. R. Tousaint, State College of Education, Greeley, Colorado.

National Council Members—D. J. Nabors, East Central College, Ada, Oklahoma; Theodore F. Nelson, St. Olaf College, Northfield, Minnesota; L. E. Norton, Bradley University, Peoria, Illinois.

Immediate Past-President—Sherod J. Collins, Northeast Missouri State Teachers College, Kirksville, Missouri.

Editor of the FORENSIC—Harvey Cromwell, Mississippi State College for Women, Columbus, Mississippi.

Associate Editor of the FORENSIC—Emil R. Pfister, Central Michigan College of Education, Mount Pleasant, Michigan.

THE PROVINCES AND GOVERNORS

1. **Province of the Plains**
Kansas, Nebraska, Colorado. Jess W. Gern, Western State College of Colorado, Gunnison, Colorado.
2. **Province of Missouri**
Missouri, Iowa-Central, Simpson, Parsons, Coe, Drake, William Penn. Harold C. Svanoe, Central College, Fayette, Missouri.
3. **Province of Illinois**
Illinois, Wisconsin-Ripon, Carroll, White-water State. Clayton Ford, The Principia, Elmhurst, Illinois.
4. **Province of the Pacific**
Arizona, California. Dean F. McSloy, Arizona State College, Tempe, Arizona.
5. **Province of the Sioux**
Iowa-Morningside, Westmar, North Carolina, South Carolina. Harold C. Larson, Huron College, Huron, South Dakota.
6. **Province of the Lower Mississippi**
Arkansas, Louisiana, Texas, Oklahoma. Wilma Baugh, Louisiana Polytechnic Institute, Ruston, Louisiana.
7. **Province of the Lakes**
Maine, Michigan, Indiana, Ohio, Pennsylvania, West Virginia. Ethel Kaump, Kalamazoo College, Kalamazoo, Michigan.
8. **Province of the Upper Mississippi**
Iowa-Luther, Upper Iowa, Dubuque-Minnesota, Wisconsin-Eau Claire State, River Falls State. Robert A. Forsythe, College of St. Catherine, St. Paul, Minnesota.
9. **Province of the Southeast**
Alabama, Florida, Georgia, Kentucky, Mississippi, North Carolina, South Carolina, Tennessee. Mrs. John H. Meizer, Georgetown College, Georgetown, Kentucky.
10. **Province of the Northwest**
Idaho, Montana, Oregon, Washington. Erwin H. Schwiebert, College of Idaho, Caldwell, Idaho.



FORENSIC

OF PI KAPPA DELTA

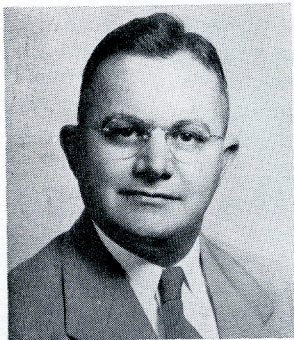
136 Fourth Avenue, N.
Nashville, Tennessee

HARVEY CROMWELLEditor

EMIL R. PFISTER.....Associate Editor

SYLVESTER TOUSSAINTBusiness Manager

Issued four times a year, in October, January, March and May. Entered as second class matter October, 1952, at the post office at Nashville, Tennessee, under act of August 24, 1912.



EMIL PFISTER, Central Michigan College of Education

Emil R. Pfister is Director of Discussion and Debate in the Speech Department of Central Michigan College of Education, Mt. Pleasant, Michigan, where he has served the past seven years. Previous experience includes high school speech teaching and ten years as a high school principal. He has an A.B. degree from Central Michigan College, and an M.A. from the University of Michigan, and has done further graduate study at Columbia University, Michigan State College, and Denver University. Professor Pfister is a past president of the Michigan Speech Association and the Michigan Intercollegiate Speech League and has served as a member of the State Forensic Council for the past four years. He holds the degree of Special Distinction in Pi Kappa Delta and is Associate Editor of the FORENSIC.

Michigan in the Spring

"SI QUERIS Peninsulam Amoenam, Circumspice" (If thou seekest a beautiful peninsula behold it here) reads the Latin inscription on the great seal of the state of Michigan. This is especially true in the spring when, after the warm sun has melted the snows, the "green gets back in the trees."

Pi Kappa Deltans all over the nation might well start now to make plans for their trip to the National Convention in Kalamazoo in April lest they unknowingly miss points of great interest.

Some of the people attending the Convention will come by train; a few will fly; but most will come by automobile. Michigan has more than five thousand miles of state maintained hard surfaced roads, engineered for safety and landscaped to blend in with the natural scenic beauty.

April is too late for winter sports and too early for bathing but, as most Michiganders

know, it is the best time for sightseeing trips on the highways. The hazards of winter driving are over and the heavy summer tourist traffic has not yet started. The arbutus is in bloom and the deer, forgetful of the hunting season last fall, come out of the woods in the evening to eat the fresh young grass by the roadside.

No part of the state is more than 85 miles from one of the four great lakes: Lake Michigan, Lake Huron, Lake Erie, or Lake Superior. These great lakes give Michigan 2,400 miles of shoreline. Florida is the only state in the Union with a longer shoreline; California with 1,500 miles of shoreline ranks third.

Michigan has fewer inland lakes than Minnesota but nearly every group who motors to Kalamazoo will have the opportunity of a scenic drive along one or more of Michigan's six thousand inland lakes.

Drivers coming to Michigan from Eastern and Southeastern states may visit Detroit,

home town of Eta Chapter at the University of Detroit. A few extra hours could very interestingly be spent by a tour through some of the greatest automobile manufacturing plants in the world. Michigan produces 85 per cent of the passenger cars made in the United States and some enterprising collegian, by means of a persuasive talk with his local auto dealer, may serve as a driver to transport a new car from Michigan back to the hometown agency.

Two other Pi Kappa Delta schools that may be on the itinerary of travelers from the east and south are: (1) Michigan State Normal College, Ypsilanti, the oldest teacher training institution west of New York; and (2) Michigan State College, East Lansing, with an enrollment of over 13,000 students, the ninth largest university in the United States. It has a beautiful four thousand acre campus often called "the most beautiful college campus in America." A visit to the campus should in-

clude the radio station, WKAR, and the new television studios.

Travelers from the West may wish to cross Lake Michigan on the Milwaukee Clipper from Milwaukee, Wisconsin, to Muskegon, Michigan, and then on to the Convention by way of Grand Rapids, the furniture capital, or via Holland, home of Gamma Chapter at Hope College. Holland, Michigan, was founded by the Dutch and it still has many of the characteristics of a Dutch town. Its Tulip Festival is one of the largest events of its kind in the United States.

Chapter members located in the northwest may wish to enter Michigan by way of the upper peninsula, the timber and ore section of Michigan. These delegates will cross the historic Straits of Mackinac and travel through Mt. Pleasant, oil industry center and home of Theta Chapter at Central Michigan College of Education.

Kalamazoo, population 57,000, with its paper manufacturing and drug industry, its celery,

Your student hosts for the National PKD Convention, Kalamazoo College.





The main campus of Kalamazoo College. Left to right, Wells Hall (Dining Hall), Stetson Chapel, Mandelle Library, R.E. Olds Science Hall.

peppermint, and fruit farms, as well as many other attractions will be a hospitable host city. Near Kalamazoo are other interesting attractions such as one of the nation's outstanding bird sanctuaries and the huge cereal plants of Post and Kellogg whose products are known around the world.

Yes, you will enjoy Michigan in the spring. So plan your trip. The six Pi Kappa Delta chapters in Michigan stand ready and eager to help you with information, accommodations, or other services. You have every right to look forward to your visit to "the beautiful peninsula."

This school year is National Convention year for all chapters and members of Pi Kappa Delta. The first national convention convened on the campus of Ottawa University (Kansas Alpha), March 31, 1916, with eleven chapters attending. In 1951, the convention was held on the campus of Oklahoma A. & M. College (Alpha) with 139 chapters attending. Forty chapters were not represented. This year, 1953, there are 180 active chapters in thirty-three states. Let's make 1953 a 100 per cent year! Let's everyone see everyone at Kalamazoo College on April 5!

KALAMAZOO COLLEGE

Home of the 1953 National Convention of Pi Kappa Delta to be held April 5th through April 9th, 1953.

The door latch is out and the welcome mat has been spread at Michigan Alpha by Dr. Ethel Kaump, Head of the Department of Speech and Governor of the Province of the Lakes, her colleagues, and students as final plans are made to welcome the largest and best National Convention of Pi Kappa Delta to the campus of Kalamazoo College, April 5-9, 1953.

Constance Wilson, Student Forensic Manager, gives an insight into the fun, frolic, and work delegates may expect next spring in her letter to all PKD's.

Twelve PKD Michigan Alpha chapter members are busy these days planning your visit to our campus next April 5. We are a small liberal arts college, but we hope we can extend as big and as general warmth and welcome to you as we have felt in the past on much larger campuses.

We like to think of our college family as a "Fellowship of Learning." May we all feel a part of this fellowship when we meet on our campus this spring. How impatient we are to have you as our guests. Of course, we realize that much

planning for such a tournament is most necessary. We can assure you that the educational aspects will be present through our various speech activities, but the "fun angle" is not forgotten.

With the help of six other chapters, "K" College can promise you a most enjoyable visit. Though we are a small college, our facilities are most adequate. We are completely taken up with the rush of various duties for our meet. It is a pleasure to tell you how proud we are to be your host. We are certain that you will long remember the friendly home like atmosphere found in our little college on the hill.

The Alpha of Michigan, as your host, bid you welcome.

Speech education is a vital part of the liberal arts program at Kalamazoo. "K" College is an active member of the Michigan Intercollegiate Speech League; includes discussion, debate, oratory, and extemporaneous speaking as distinct parts of its program; and has been represented in all areas at the last two Province of the Lakes tournaments and participated in men's debate, men's and women's oratory and extemporaneous speaking at the 1951 National PKD Convention.

Housing Accommodations

The residence halls of Kalamazoo College, faculty homes, local hotels, and local tourist courts and homes will be utilized to provide convenient accommodations for all delegates attending the 1953 convention.

The housing committee is making every effort to provide for each delegate on an individual basis to assure everyone the same courteous consideration. Each chapter should forward the registration cards to the chairman of this committee, indicating his preference for housing. The cards will be mailed early in January. We suggest the chapter registrations be inclusive, and sent at one time. Housing will be assigned by the committee upon receipt of these cards.

In order to have accurate reservations made, we are asking that reservations for accommodations in resident housing or in faculty homes be made directly to this committee. For hotel, tourist court, and tourist home accommodations, reservations should be made directly to the individual establishment. Also indicate to the Kalamazoo College housing committee, on the registration cards, where you have made them.

The following choices in housing are available:

1. Campus—Permanent Resident Halls. Limited to about 530. Rates: \$2.00 per person per night. (This includes sheets, pillow cases, 1 blanket, and towels.)
2. Faculty Homes—Arrangements have been made to house those from west of the Rocky Mountains *free* in faculty homes on or close to the campus, if desired.
3. Hotels—There are three hotels available.
 - a. Columbia Hotel, 348 E. Michigan, Kalamazoo, Michigan. Rates: Full bath, \$3.75 per person for double or twin beds; \$6.50 for double bed.
Half bath with showers convenient, \$3.50 for one person; \$5.00 for two.
(Reduced rates are probable if enough reservations are made. When you make reservations, indicate that you are a delegate for the convention and ask about reduced rates if desired.)
 - b. Harris Hotel, 333 E. Michigan, Kalamazoo, Michigan. Rates: \$8.00, doubles; \$5.00, singles.
 - c. Burdick Hotel, 124 W. Michigan, Kalamazoo, Michigan. Rates: Doubles with bath, \$5.50–\$6.50; twins with bath, \$7.50–\$8.50; Doubles without bath, \$4.75–\$5.00.
4. Tourist Court—Forty Winks Motel, R. No. 4, Kalamazoo, Michigan. Rates: \$2.50 per person. (This is a special rate for convention delegates, so state you are delegates to the Pi Kappa Delta Convention.)
5. Tourist Homes—
 - a. Hunter's Tourist Homes, 804 Academy, Kalamazoo, Michigan. Rates: \$4.50, twin beds, two people; \$6.00, double and twin bed, three people; \$7.00, two double beds, four people; \$3.75, double bed, two people; one room of each is available.
 - b. Bishop's Tourist Home, 705 W. Kalamazoo, Kalamazoo, Michigan. Rates: \$2.00, single; \$4.00, two in a room; \$6.00, three in a room.

Meal Accommodations

Meal tickets are available for all delegates. They may be purchased for \$8.00 and include all meals from Sunday night (April 5) through lunch, Thursday, April 9. Banquet tickets for Thursday evening are \$2.50 each.

***All individual registration cards must be received in Kalamazoo by
February 20, 1953.***

Convention and Contest Rules

General

1. Each student and one faculty director of forensics from each college, attending the convention must pay a registration fee of \$6.00. This covers the banquet ticket, admission to all meetings and contests and the formal dance. If a college brings additional faculty members who accept judging assignments such faculty members will be issued a banquet ticket at cost and will not be charged the registration fee. The same rule will apply to wives of faculty members. Entry fees for participation in the convention contests and in discussion shall be in addition to this registration fee.

2. Each student delegate to the Convention and each participant in the contests or in discussion shall be a bona fide undergraduate student who has not already had four years of forensic participation previous to 1952-1953 and who is carrying a minimum of twelve hours of college work with passing grades at the time of the convention. He shall be a member of Pi Kappa Delta or shall have filed a membership application with the National Secretary and sent in his initiation fee.

3. All entries in convention contests and in discussion must be sent to the National Secretary so as to show a postmark not later than March 5, 1953. Entries mailed later than that date will not be accepted. The entry fee shall be \$1.00 for each event entered and shall be sent with the entry blank.

4. There shall be separate divisions for men and women in all events except discussion. Gold medals will be awarded to winners of Superior rating in each contest; certificates to those winning Excellent rating.

5. Certificates of "Superior" will be awarded to the 10% of the chapters with the most points in men's contests and to the 10% of chapters with the most points in women's contests. Certificates of "Excellent" will be awarded to the next 20% in each division. Those in the next 30% will be rated "Good" but will receive no certificates. Points will be given in debate as follows: Superior rating—10 points; Excellent—8 points; Good—6 points; participation—2 points. In extemporaneous speaking and oratory a rating of Superior will

be given 5 points; Excellent—4 points; Good—3 points; participation—1 point.

6. All contest arrangements not covered by the rules shall be in the hands of the individual contest committees and the Director of Tournaments. Questions concerning any interpretation of contest rules should be directed to Professor John Randolph, Westminster College, Fulton, Missouri.

Judging

All competing chapters must provide at least one faculty member who is a qualified judge and who will accept his assigned service as outlined by the judging committee. Individual adjustments in that assignment will be made by the chairman of the committee. No college will be permitted to enter the convention tournament without providing a judge unless the delegation is limited to one student representative. No student member of the delegation will be permitted to serve as a substitute for a faculty judge. A college which cannot meet the requirements of this section or whose faculty representative feels that he cannot meet his judging assignments is requested not to enter the contests.

Oratory

1. Contestants. Each Pi Kappa Delta chapter may enter one orator in the men's and one in the women's contest.

2. Orations. Orations shall not exceed 10 minutes of speaking time and shall contain not more than 150 words of quotations. All orations must be certified by the coach as being the original work of the contestants. All quotations shall appear definitely as such in the manuscript. Each contestant shall present a typewritten copy of his oration to the National Secretary of Pi Kappa Delta at the Convention Registration desk on April 5, 1953. The oration delivered in the contest must conform to the manuscript submitted. The manuscript will not be returned.

3. Contests. The contests shall be held simultaneously, the number of such contests being determined by the number of contestants entered, it being provided that not more than seven speakers shall appear on one pro-

gram. Each orator shall appear in four rounds.

4. Method of Judging. Three judges shall be appointed in each contest. Each judge shall rank only the three highest ranking speakers, first, second, and third. In tabulating the results, all other speakers in each contest will be given a ranking of four. No judge shall tie two speakers for first, second, or third places. The judges may comment on the speakers at the close of the round, but should not reveal their decisions.

5. Rankings. The orators ranking in the upper 10% will be rated "Superior"; those in the next 20% will be rated "Excellent"; those in the next 30% will be rated "Good."

Extemporaneous Speaking

1. Contestants. Each Pi Kappa Delta chapter may enter one speaker in the men's and one in the women's contest.

2. Subject. The subject will be "The Expansion of Federal Power." This subject will be divided into four areas.

3. Subtopics. The Contest Committee shall arrange for the securing of sufficient and suitable subtopics for each of the four areas.

4. Drawings. One hour before the time of speaking in each contest, the contestant shall draw by lot for a subtopic. It is expected that the speech will be prepared by the student without the assistance of anyone.

5. Contests. The rules for these contests shall be the same as those for oratory.

6. Length of Speeches. Speeches shall not be more than six minutes. Each speaker shall be given a warning by the timekeeper at the expiration of five minutes.

7. The Question Period. Each speaker shall be asked one pertinent question by a judge at the close of his original speech. The speaker must answer this question impromptu; maximum time for the answer, two minutes.

8. The Method of Judging. The method of judging shall be the same as that for oratory.

9. Ranking. The method of ranking shall be the same as for oratory.

Debate

1. Each Pi Kappa Delta chapter may enter one team in the men's division and one team in the women's division. No mixed teams shall be entered.

2. Substitutions. There may be free substitution of debaters from round to round pro-

viding the names of those to be used are included in the entry lists.

3. Question. The official Pi Kappa Delta question shall be used in all debates.

4. Speeches. Each debater shall have two speeches, one of ten minutes and one of five. The affirmative shall introduce the constructive and the negative shall introduce the refutation speeches.

5. Rounds. All teams will take part in eight rounds of debate, the pairings of which are to be arranged by the contest committee and posted from round to round.

6. Sides. Each college must debate both sides of the question, alternating sides in succeeding rounds.

7. Decisions. Decisions will be rendered by single judges, who may comment on the debate but who should not announce their decisions to the debaters.

8. Rankings. All teams winning all or seven of the eight rounds shall be awarded the "Superior" rating. All teams winning six debates shall be rated "Excellent." All teams winning five debates shall be given a rating of "Good."

9. Drawing. In order to avoid a drawing in which strong teams will meet only strong teams and weaker teams meet only weaker teams, every fourth team will be seeded on the basis of performance earlier in the year. Under this plan every team (including every seeded team) will meet two seeded teams and two only during the course of the eight rounds. Ratings of various colleges shall be determined by the Debate Committee with the assistance of the Province Governors and qualified Pi Kappa Delta members in the respective areas.

Discussion

1. Subject. How can we most effectively combat the threat of communism?

2. Procedure. There will be four rounds of two hours each plus a conference committee and a final round of advocacy on the convention floor.

Round I. Problem-analysis stage. (Defining and limiting the problem. What is the problem? What are its manifestations and how serious is it?)

Round II. Problem-solution stage. (What is the cause of the problem? By what criteria would proposed solutions be measured? What possible solutions are there?)

Round III. Solution stage. (What is the best solution to the problem? What solution or solutions, in the case of a minority report, does each section wish to recommend?)

Conference. One committeeman from each section to meet jointly and to examine all solutions, eliminate duplications and report back to the various sections.

Round IV. Final consideration of solutions in the same discussion sections.

Final Round: General Assembly. Speeches of advocacy and adoption of solutions by the convention. (Only those entered in discussion are eligible to participate in the debate on the floor. Other delegates form the gallery.)

3. The chairmanship shall rotate among members; each chairman shall function for one hour.

4. Each college will be permitted to enter one man and one woman; however, there will be no separate section for men and women.

5. One member from each section shall be selected in the third round to serve on the conference committee.

6. During round four each section should decide what solutions it believes in firmly enough to present for adoption on the convention floor. Since there will be a definite limit on the amount of time given each section during the debate on the floor, each section should decide how it wishes to allot this time among its own members. Majority and minority solutions should be allowed proportionate time.

7. Participants in discussion are to be evaluated on a three point scale: excellent, good, and fair. The top 30% will receive 3 points toward the sweepstakes; the second 30% will receive 2 points and the remainder 1 point. No awards will be given in Discussion. To merit these points a student must participate in the first four rounds and answer roll call in the final round. (General Assembly)

8. A faculty observer will sit with each section. It shall be his function to check attendance, to serve as a guide in procedure, and to evaluate the participants.

9. A Speaker, a Clerk, and a Parliamentarian will be appointed from faculty representatives to act during the conference between rounds three and four and during the final speaking on the convention floor.

10. The Contest Committee for Discussion will draw up a set of standing rules for the use of participants. Copies will be available at the registration desk in Kalamazoo. The rules will cover such things as limits on debate, roll call votes, the order of resolutions on the agenda, etc.

CONVENTION PROGRAM

Kalamazoo, April 5-9, 1953

Sunday, April 5

7:00-8:00 P.M. Easter Worship Service

8:30 P.M. First Business Meeting and
Charter Presentations

Monday, April 6

8:45 A.M. Debate, Round 1

10:15-12:00 A.M. Discussion, Round 1

10:15 A.M. Drawing for Extempore,
Round 1

11:15 A.M. Extempore, Round 1

1:30 P.M. Debate, Round 2

3:00-5:00 P.M. Discussion, Round 2

3:00 P.M. Drawing for Extempore,
Round 2

4:00 P.M. Extempore, Round 2

7:00 P.M. Oratory, Round 1

8:15 P.M. Debate, Round 3

Tuesday, April 7

8:45 A.M. Oratory, Round 2

10:00-12:00 A.M. Business Meeting

12:15 P.M. Province Governor's Luncheon

2:00 P.M. Debate, Round 4

3:30 P.M. Debate, Round 5

5:00 P.M. Province Business Meetings

8:30 P.M. Informal Dance—Local Chap-
ter plans three lounge parties

Wednesday, April 8

8:45-10:45 A.M. Discussion, Round 3

8:45 A.M. Drawing for Extempore,
Round 3

9:45 A.M. Extempore, Round 3

10:00 A.M. Tour

11:00 A.M. Debate, Round 6

12:00-2:00 P.M. Conference Committee
Discussions

2:00 P.M. Tour

2:00-4:00 P.M. Discussion, Round 4

2:00 P.M. Drawing for Extempore,
Round 4

3:00 P.M. Extempore, Round 4

4:30 P.M. Oratory, Round 3

7:00 P.M. Debate, Round 7

8:30 P.M. Province Night

Thursday, April 9

8:45 A.M. Oratory, Round 4

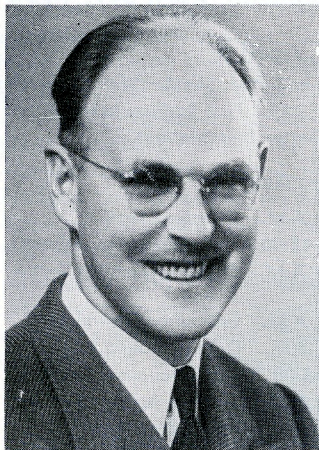
10:00-12:00 A.M. Discussion, Round 5
(General Assembly)

1:00 P.M. Debate, Round 8

2:30 P.M. Business Meeting

4:30 P.M. Tour

6:30 P.M. Convention Banquet



The President's Message

"If the honorary forensic society is worth maintaining, it contributes something to each institution holding a chapter. The society is governed by its national conventions. Each chapter should attend these conventions to share in the responsibility of directing the society, amending its constitution, electing its officers, and conducting its business." This was the admonition which I found in the *FORENSIC* of March, 1928. At that time we were getting ready to attend the Convention in Ohio. The Convention hosts were preparing to entertain almost 500 delegates from about 100 colleges. That National of 25 years ago was

the first large meeting we had. In another section of that same *FORENSIC* I found the wish expressed by one of the National officers that they might have not 90% attendance, but 100%, not for the sake of attendance but for the effect it would have upon the membership and the progress of the fraternity.

In this issue of the *FORENSIC* you will find the tentative program of events. You will read the rules to be followed in conducting the contests. You will learn something of our hosts and the things which they have planned. You will observe certain deadlines which must be met in sending in registrations and materials. Do not let these items fade into the rush of all of the other engagements of the second semester. Keep them in a prominent place so students and faculty may continue thinking of the National which will climax the season. This could be the year when we have that 100% attendance. Think what that would mean in terms of influence upon our fraternity—upon the entire forensic program in the United States—all of our chapters returning from a great Convention with the ideas and friendships gained from meeting people from all parts of the country. This could be the year of the great "Revolution."

An inspiring Easter Service is being planned to give us the lift for the start of the Convention. This will be held on Easter Sunday night and will feature an outstanding speaker as well as fine music. Following the service, the new chapters in Pi Kappa Delta will be given their charters. It is very proper, that, in this, our first meeting together, we lift our spirits to seek higher guidance and we renew the principles for which we constantly stand.

During the four days which follow you will see that every minute is planned to enable you to meet with your fellow delegates and to have a stimulating speech experience with a pleasant social experience. Our host chapter is doing everything it can to keep us contented and busy. We will have the sharp competition of the contests, the serious business of the Convention, the congeniality of living and eating together, and the multitude of opportunities to just know one another in a time that will be remembered for a lifetime.

Kalamazoo College, we are eager to be on your campus; we are grateful for all the preliminary work you are doing; we appreciate your generosity in providing for those who travel great distances; we want you to have a weather committee so that we can all arrive easily and be sun-baked while there; we are anticipating no troubles, no headaches, no complaints, just a fine Pi Kappa Delta Convention. Here We Come!!!

From the Secretary's Desk



Once again we look forward to meeting each other at a national convention, to renewing old friendships and to making new ones with students and teachers from the four corners of the country. We call special attention to the following items:

Attendance

Convention attendance. Elsewhere in this issue is a list of chapters required to be represented at Kalamazoo unless excused by President Mahaffey. Remember that attendance is determined by answering to roll call at business sessions, not by participating in contest events. The National Convention of Pi Kappa Delta is its highest authority. See that your delegation is represented and that it votes.

Convention Contests

Eligibility for convention contests is restricted to members of Pi Kappa Delta or those who have filed their applications with the national secretary and paid the fee of five dollars. There can be no exceptions.

Convention Rules

Please—oh, please—read the convention rules. Then re-read them. Do not embarrass the convention hosts, officers, or committees by asking for exceptions to the rules after you arrive at Kalamazoo.

Reservations

Entry blanks and housing reservation forms will be in your hands in plenty of time for you to put them in the mail by the deadline date, March 5. If in doubt about two speakers, enter them both and cancel the one who does not come.

Registration

The registration desk will open at one o'clock, Sunday, April 5. Register as early as possible in the afternoon to accommodate the registration clerks. We will be able to give you better service if you avoid the late rush.

New Chapters

The following chapters will receive their charters at the first business session, Sunday evening, April 5: Illinois Chi—Greenville College; Washington Eta—St. Martin's; Washington Zeta—Western Washington; Louisiana Epsilon—Northwestern State; Tennessee Zeta—Middle Tennessee State; Tennessee Eta—University of the South; California Theta—Pasadena College.