

THE FORENSIC

OF PI KAPPA DELTA

ALFRED WESTFALL, Editor
G. W. FINLEY, Business Manager

SERIES 21

MARCH, 1936

NO. 3

DEAD CHAPTERS

I have recently been thumbing through the pages of Baird's *Manual of American College Fraternities*. I have been impressed with the number of chapters which have been established by all of these fraternities and sororities, both social and honorary, and then died. In some cases the list of inactive chapters is longer than the list of actives. These dead chapters may be accounted for in various ways. In many cases they were hastily and unwisely established in institutions which could not support them or were not fundamentally interested in the field of activity they represented. In many cases, while the establishment of the chapter was probably wise at the time, conditions changed enough afterwards to make it impossible to maintain it. In other cases the local chapters discovered that the national organization had little that was worth while to offer them and relinquished their charters.

A study of our own chapter rolls is enlightening and encouraging. From the standpoint of the number of chapters, ours is the largest Greek letter society, social or honorary, in the United States. We have granted 162 charters, of which 150 are held by active chapters. More than 92% of the chapters we have established are still functioning. To the members of the society this means a number of things. Forensics are active and vital in our present day college life. Pi Kappa Delta is returning value received to its chapters and members. Not many chapters have been established unwisely, even in the days when the society was growing most rapidly.

Twelve chapters to which charters have been granted are on the inactive list. Six of these were established in institutions which have since closed their doors. They were:

Charter No. 15, Des Moines University, Iowa Gamma, inactive 1929.

Charter No. 32, Cotner, Nebraska Beta, inactive 1933.

Charter No. 54, Hedding, Illinois Epsilon, inactive, 1924.

Charter No. 56, Grand Island, Nebraska Epsilon, inactive 1931.

Charter No. 69, Missouri Wesleyan, Epsilon, inactive 1928.

Charter No. 102, Lombard, Illinois Kappa, inactive 1930.

There is slight possibility of any of these institutions being reopened and these chapters are probably crossed off our rolls forever.

Chapter 10 was hastily established in Occidental College, as California Beta. That was in the days when there was open warfare between the honorary forensic societies. When an amicable adjustment was made later, Pi Kappa Delta relinquished its claims in California for concessions made to it in Illinois. California Beta is therefore probably a "closed chapter," in more ways than one.

A charter was granted to a Michigan institution and later revoked. Perhaps we may yet some day see a chapter there.

There are only four chapters which might still be active members of the society which are listed as inactive. They are:

No. 16, Alabama Polytechnic, Alabama Alpha, inactive 1918.

No. 53, Southwestern, Texas Alpha, inactive about 1930.

No. 91, Wayne, Michigan Zeta, inactive 1934.

No. 138, Bowdoin, Maine Beta, granted in 1932 but never established.

For the strengthening of our national society, for the improving of our record, and for the benefit it would be to these four institutions, the present writer hopes that something can be done in the next few months leading to the reestablishment upon the active list of these four chapters. Provincial governor and some of the neighboring chapters could get in touch with these institutions, revive their interest, and lend them assistance. Surely it would be a fine thing for the society.

While we have only twelve dead chapters, we have a number of others which are not as robust as they might be. Perhaps we can all do something to strengthen them. We help ourselves by helping our neighbors. The best athletics are developed in those institutions with neighboring rivals offering strong competition. The same is true in forensics. We should be as much interested in holding the chapters we have as we are in establishing new ones.

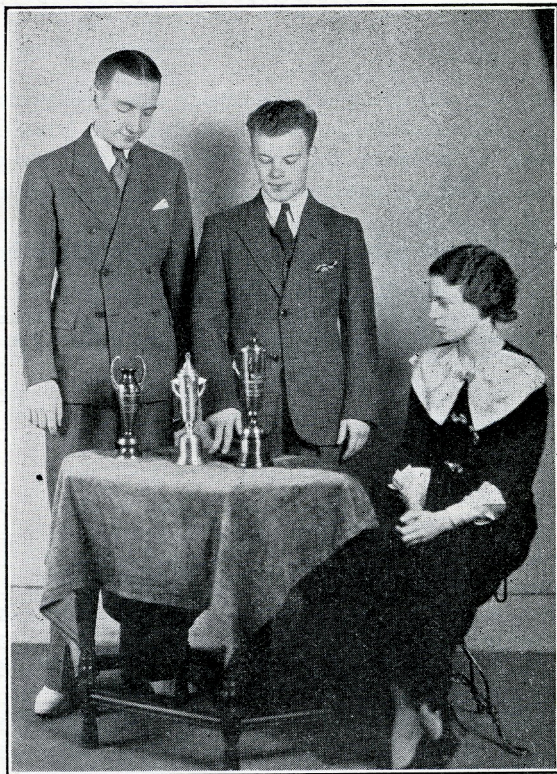
ILLINOIS WESLEYAN REPRESENTED BY STRONG TEAM

These three seniors will represent the Alpha Chapter of Illinois Wesleyan University this year at Houston. They are, reading from left to right, Eugene R. Balsley, Harold M. Livingston, and Maryfern Martin.

These three made a fine showing this past year at the Illinois-Wisconsin Provincial Convention, held at Waukesha, Wisconsin. Each of these contestants brought back a trophy. Balsley won first place in the extempore contest, Livingston won second place in the men's oratorical contest (losing by one-tenth of one percent), and Miss Martin won first place in the women's oratorical contest.

It has been rumored on the Wesleyan campus that they all have promised to do equally as well in the coming convention at Houston. All three of these people have had considerable work in the department of speech. Mr. Livingston and Mr. Balsley have both done considerable debating, but always on opposite teams. This year, for the first time, they plan to team-up together. Maybe this will be of news to their opponents.

The coach of the Illinois Wesleyan debaters this year is Norman W. Hickman, member of Pi Kappa Delta and an alumnus of Wesleyan. He has an enviable record of losing only two debates while enrolled in Wesleyan.—*The Illinois Wesleyan Triad*.



Convention Attendance

So far the National Secretary has preliminary reports from seventy-four chapters. These chapters are planning to send 401 delegates. With eighty more chapters to report, the convention attendance should surpass the record breaking representation at Lexington in 1934.

The report up to February 25 shows the following:

School	Men's			Women's			Coaches	Total
	Debate	Oratory	Extemp.	Debate	Oratory	Extemp.		
Alabama College	1	1	1	1	4
Arizona Teachers	1	..	1	1	1	5
Henderson, Ark.	1	1	1	5
Ozarks	1	1	1	1	1	1	1	6
Redlands	1	1	1	1	1	1	2	7
Calif. Inst. Tech.	1	1	1	3
Pacific	1	1	1	5
Colorado State	1	..	1	1	..	1	2	7
Greeley State	1	1	1	1	1	1	1	7
Western State	1	1	..	1	1	1	..	4
Rollins, Florida	1	1	1	1	1	1	1	7
Eureka, Illinois	1	1	1	1	3
Monmouth	1	1	1	..	1	5
I. S. N. U.	1	1	1	1	1	1	2	6
Wheaton	1	1	1	1	1	1	2	10
Macomb Teachers	1	1	..	1	..	1	1	6
DePaul	1	..	1	..	2
DeKalb	1	1	1	1	1	5
Franklin, Ind.	..	1	1	1	1	..	1	6
Central, Iowa	1	1	1	1	1	1	1	7
Simpson	1	1	1	1	1	1	1	8
Ottawa, Kansas	1	1	1	5
Emporia Teachers	1	..	1	1	1	5
Pittsburg Teachers	1	1	1	1	1	1	1	9
Bethany	1	1	1	1	1	1	1	6
Fort Hays	1	1	1	1	1	7
Centre, Kentucky	1	..	1	2
Georgetown	1	1	1	4
Wesleyan	1	1	1	4
Louisiana	1	1	1	1	1	1	1	8
Centenary	1	1	3
S.W. Louisiana Inst.	1	1	..	1	1	..	2	7

School	Men's			Women's			Coaches	Total
	Debate	Oratory	Extemp.	Debate	Oratory	Extemp.		
Colby, Maine	1	1	1	--	--	--	1	3
Battle Creek, Mich.	1	1	1	1	1	1	1	5
Macalester, Minn.	1	1	1	1	1	1	1	8
Gustavus Adolphus	1	1	1	1	1	1	1	7
Hamline	--	--	1	--	--	1	1	3
St. Thomas	1	1	1	--	--	--	1	5
Concordia	1	1	1	1	1	1	1	5
Park, Missouri	1	--	--	1	1	--	1	6
William Jewell	1	--	--	1	1	1	1	5
Culver-Stockton	1	1	--	1	--	1	1	5
Warrensburg	1	1	1	1	1	1	1	6
Kirksville	1	1	1	1	1	1	2	8
Cape Girardeau	1	1	--	--	--	--	1	3
Intermountain, Mont.	1	1	1	1	1	1	--	5
Hastings, Nebr.	1	1	1	1	1	1	1	8
Kearney	1	1	1	--	--	--	2	5
No. Carolina State	1	1	1	--	--	--	1	3
Asheville	1	--	--	--	--	--	--	2
Marietta, Ohio	1	--	--	--	--	--	1	3
Bowling Green	1	1	1	--	--	--	1	3
Kent State	1	1	1	1	1	1	2	10
Tulsa, Okla.	1	1	1	--	--	--	1	6
Alva Teachers	1	1	--	1	--	--	1	5
Edmond Teachers	1	1	1	1	1	1	1	8
Linfield, Oregon	--	--	--	1	1	1	1	5
Puerto Rico	1	--	--	--	--	--	1	3
Presbyterian, S. C.	1	--	1	--	--	--	--	2
Dakota Wesleyan	1	1	1	1	1	1	1	7
Huron	1	--	--	--	--	--	1	3
Yankton	1	1	1	1	1	1	2	10
State	1	1	1	1	1	1	1	8
Sioux Falls	1	1	1	--	1	--	1	9
Augustana	1	1	1	1	1	1	1	7
Madison	1	1	1	1	1	1	1	5
Maryville, Tenn.	1	1	1	1	1	1	2	7
Trinity, Texas	1	1	1	--	--	--	1	5
Mary Hardin-Baylor	1	1	1	1	1	--	2	6
Hardin-Simmons	1	1	1	--	--	--	1	5
Baylor	1	1	1	1	1	1	1	7
Stephen F. Austin	1	1	--	--	--	--	1	4
Farmville, Vir.	--	--	--	--	1	--	1	2
Carroll, Wis.	1	--	--	--	--	--	1	3
	68	53	51	47	40	37	78	401

With sixteen contests scheduled for five days, five St. Thomas, Minnesota Epsilon debaters, toured Wisconsin and northern Illinois. Two of the contests were before Rotary clubs. Among the Wisconsin institutions met in one or more debates were the teachers colleges at Rive Falls, Eau Claire, Stevens Point and Oshkosh, and Lawrence, Carroll, and Marquette. In Chicago the St. Thomas debaters engaged De Paul, and the University of Chicago.—*The Aquin.*

◆

The fifth annual Northwest Debate Tournament sponsored by College of St. Thomas, Minnesota Epsilon, was scheduled for March 2-4. Early reports indicated that it would be larger than ever, with more than one hundred teams from twenty-eight institutions in seven states.—*The Aquin.*

◆

Ohio women's teams are debating the following question; That the parole system as now administered is detrimental to the best interests of criminal control in the United States.—*The Kent Stater.*

◆

Emporia Teachers, Kansas Zeta, sent Coach Pflaum and four debaters on a debate trip which carried them to the University of Denver speech conference in Denver February 13-15.—*The Bulletin.*

◆

At the Culver-Stockton tournament January 30, February 1, there were 120 debates. The negative won 66 decisions to 54 for the affirmative.—*The Megaphone.*

◆

Northern State Teachers, South Dakota Zeta, sponsored a high school debate tournament January 3-February 1.—*The Exponent.*

◆

The fourth annual invitation speech tournament of Abilene Christian College, was held February 7-8.—*The Brand.*

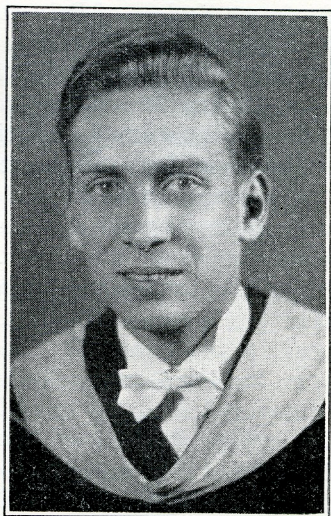
◆

Wayne Thompson, Illinois Nu, carried his string of debate victories to thirteen.—*Western Courier.*



DOUGLAS EADIE
Wheaton College

Douglas Eadie and Charles Troutman, Wheaton College, Illinois Mu, the largest chapter of Pi Kappa Delta, will debate at Houston. They will compete in the Redlands, California Alpha, tournament March 19, before coming to Houston. They recently won the invi-



CHARLES TROUTMAN
Wheaton College

tational tournament at Illinois Normal University, Illinois Eta. Both hold the degree of Special Distinction in Pi Kappa Delta. Mr. Eadie is president of the senior class, and Mr. Troutman is president of the student council.

Two Melbourne University (Australia) debaters arrived in the United States January 25 for a six months debate and lecture tour. Both are men of prominence and experience. They will debate on the questions of making the League of Nations a super power, dictatorship versus democracy, the doom of culture under our present system of living, and world decay as civilization penetrates the masses. —*Kentucky Wesleyan Undercurrent*.

At a tournament sponsored by Heidelberg, Ohio Beta, the affirmative of the Pi Kappa Delta question won 29 times and the negative 27 times.—*The Kent Stater*.

BOOK REVIEW

Directions for Speech and Style by John Hoskins, edited with an introduction and notes by Hoyt H. Hudson. (Princeton Studies in English, edited by G. H. Gerould, No. 12) Princeton: Princeton University Press, 1935: pp. [v]-xl, 122.

John Hoskins (1566-1638) has left for us a highly diverting essay in his *Directions*, now presented to us in a most scholarly edition by Professor Hudson of Princeton University. Though parts of Hoskins' work appeared in Jonson's *Timber*, though most of it was used by Blount in his *Academy of Eloquence*, and though John Smith used much of it in *The Myserie of Rhetorique Unvail'd*, this is really the first readily available printing of the *Directions*.

Professor Hudson suggests (p. vi) that Hoskins may well be taken "as a genial guide to students of style," and hence has set about, through modernized punctuation and spelling, to make the work completely readable in our day. We can only say that this aim will be completely fulfilled when readers realize how really "genial" and interesting is this advice of Hoskins, originally intended to instruct a young man in methods—the best, of course—of speaking and writing.

In the introduction to this volume (pp. ix-xl) the reader is made acquainted with the life of the author, content and sources of the *Directions*, its textual transmission through Jonson, Blount, and Smith, and its general purpose. The text itself comes next (pp. 1-51), though we regret the lack of a title-page facsimile. The text is followed by exhaustive notes. In the latter, much labor has been expended in a clarification of meanings, a recording of variants, translations from the Latin, etc. Two appendices, the latter containing Hoskins' "Fustian Answer made to a Tufftaffata Speech," and an index complete the volume.

The essay is of interest to the English student because of the numerous references in Hoskins to Sir Philip Sidney's *Arcadia*, chiefly for illustrative purposes. The essay, in spite of its age, is quite modern in tone, and we have to be grateful to the editor for a splendid task well performed.—Theodore G. Ehram, Instructor in English and Speech, Lehigh University, Bethlehem, Penna.

Congress or the Supreme Court. By E. R. Nichols. New York, Noble and Noble, 1935; \$2.00.

"By far the best collection of debate material on this year's Phi Rho Phi question that I have yet been able to secure is *Congress or the Supreme Court; Which Shall Rule America?*, compiled and edited by Egbert Ray Nichols, of the University of Redlands," writes

Mrs. Clifford Peterson in *The Persuader*. We agree. The members of Pi Kappa Delta are especially interested in the series of debate books Prof. Nichols is putting out, not only because of their high quality, but also because he is the founder of the society.

Augustana, Illinois Xi, has scheduled a combination Oregon Plan and open forum debate with Northwestern. The debate is sponsored by the Moline Y. M. C. A. The affirmative will open the debate with a ten minute speech. The speaker will then be questioned for five minutes by his opponents and afterwards for five minutes by the audience. The negative speaker then goes through the same program. Afterwards each side will have five minutes for a summary.—*Augustana Observer*.

Mary Belle Burch, William Jewell, Missouri Delta, was awarded a cup as the outstanding individual debater at the Kansas City Law School no-decision tournament, February 14-15. Lee Howard, State Teachers of Pittsburg, Kansas Theta, was voted second honors.—*The William Jewell Student*.

Harold Mackenzie, veteran senior debater, won the men's intramural debate tournament at Wheaton, Illinois Mu. There were twenty contestants. Sixteen women are working on the women's squad.—*The Wheaton Record*.

Martin Cogley and Robert Sheran, prominent as forensic leaders at St. Thomas, Minnesota Epsilon, were leaders also in the discussion program of Catholic Youth Conference in Minneapolis, October 12-13.—*The Aquin*.

East Central State Teachers, Oklahoma Eta, has scheduled its fifth annual invitation high school debate tournament for February 21-2.—*The East Central Journal*.

Texas Christian, Texas Zeta, debated the University of Hawaii February 21. The Hawaiian team is making an extensive tour of the country.—*The Skiff*.

Emporia Teachers, Kansas Zeta, advertises that it is ready to furnish speakers for all occasions from its faculty of outstanding men and women.—*The Bulletin*.

◆

At William Jewell, Missouri Delta, Pi Kappa Delta ranked second in scholarship among twenty-two campus organizations.—*The William Jewell Bulletin*.

◆

The forensic interests at Drake invited the Young Republican and Young Democrat organizations to debate the New Deal. — *Drake Times-Delphic*.

◆

Two women's teams of Wheaton, Illinois Mu, debated nine times on a trip through Wisconsin and Michigan.—*The Wheaton Record*.

◆

The Colorado Beta chapter, Colorado State College of Education, is sponsoring a Tri-State High School Debate Tournament March 6-7.

◆

Park and William Jewell won honors in a debate tournament at Maryville, Missouri Kappa, January 11.—*The Park Stylus*.

◆

Shurtleff, Illinois Lambda, took a five day trip, debating a number of up-state institutions.—*The Shurtleff Pioneer*.

◆

Augustana, Illinois Xi, sponsored a high school debate tournament. Twenty teams competed.—*Augustana Observer*.

◆

Kent State, Ohio Iota, has scheduled a debate with the University of Hawaii.—*The Kent Stater*.

◆

Drake, Iowa Mu, debated through Kansas, Missouri, and Nebraska.—*Drake Times-Delphic*.

◆

Answer to problem on EDITOR'S PERSONAL PAGE. He sold the watches for \$225 each.