

Governors



• Professor Paul F. Rosser, Chairman of the Department of Speech and Director of Forensics, Seattle Pacific College since 1948, was elected Governor of the Province of the Northwest at the National Convention held at Kalamazoo College last spring. Born at Tahlequah, Oklahoma, Governor Rosser was educated in the Seattle Public Schools. He received the B.S. degree from Seattle Pacific, 1940, and the M.A. from the University of Washington, 1950. From 1941-45, he served as a member of the U.S. Army Signal Corps Intelligence in Alaska. While at Seattle Pacific, he has assisted in the installation of PKD chapters at Seattle Pacific, Pacific Lutheran, Western College of Education, and St. Martin's. Professor Rosser holds the degree of Special Distinction in the orders of Debate and Oratory. He was the first president of Washington Beta. Each year, Seattle Pacific sponsors the Pacific Northwest Invitational Speech Tourney, one of the largest held in the Northwest.



Professor James Robinson founder of Oklahoma Lambda and chairman of the Department of Speech at Oklahoma Northeastern State College for the past seventeen years has accepted a new position at the University of Oklahoma as Specialist in General Education. Included among his duties will be directing the Oklahoma High School Speech League and the Oklahoma Junior College Forensic Association. He holds the A.B. and LL.B. degrees from the University of Oklahoma, an M.A. from Northwestern University, and additional graduate work at Oklahoma University, Northwestern, Colorado State College, and Tulsa University.

Let's Clamp Down on Forensic Shysters

JAMES ROBINSON, *The University of Oklahoma*

It has been my observation that most of the severe criticisms of "shyster" practices in high school or college debate has come from enemies of the activity. It is hoped, therefore, that some criticism from an intense friend of the activity will not be discarded with the abandon that most of the criticisms deserve.

As a graduate lawyer with eight years of high school and college debating and with a better-than-average coaching record, no one can conscientiously push these objections aside as the hydrochloric mouthings of a frustrated forensic malcontent. My high school teams at Sulphur and Bristow were consistent winners and my college teams have won forty-five trophies here in 15 years, including a superior rating in both the men's and women's divisions of the 1951 national Pi Kappa Delta tournament. I love debate. I want to fight for its continuance and expansion. I know of no other speech activity that can be of as much value in developing effective speakers. But, on the other hand, I know of no other speech activity that is abused more often by unethical coaches and unethical speakers.

It is my hope that the speech people themselves will clean house; that they will set up a code of ethics—which, incidentally, will be followed more rigidly than the legal professions follows its code of ethics; and that they simply will refuse to tolerate the unethical practices which have provided the ammunition for opponents of the activity.

What are some of these practices? Some of them are due to a distorted notion of the purpose of debate and others appear to be due to a distorted sense of values. Some, of course, are due to ignorance rather than pre-mediated intent.

What is debate? What is its purpose? Is it a game like a game of chess in which one player tries to outmaneuver the other and catch him without regard for the merits of the cause? The writer has seldom seen a year pass during which he does not judge some team or more with a "screwy" interpretation of a word or an interpretation of the question which cannot be justified in the light of the purpose to be achieved in debating. Say something about it and the "indignant" team or coach will reply, "Well, that's strategy! Strategy! Is it strategy to define terms "out of existence?" Is it strategy to prepare a definition that defeats the purpose of the question and the intention of debate as an educational experience—just for the sake of winning a decision by surprise! To surprise a person by advancing a valid argument or bringing out a valid issue is fine; the opponent should have been better prepared on the question. But to surprise him by "inventing" an absurd definition or an absurd analysis is rank "shysterism."

The primary purpose of debate as an educational activity is, it seems to me, to give students training in analysis and straight thinking; to learn how to find and present VALID evidence to the masses of people who do not have the training or time necessary for research; ethical advocacy, in other words, after having engaged in extensive research and discussion with others.

There are those who would throw out debate and replace it with discussion. The writer would join that group if it were at all practicable. But we live in a democracy. Democracy at its best is slow and cumbersome; that is the price we pay for it and we are willing to pay any price that is necessary.

But that same democracy ceases to have any value unless it can do some moving. There is no point in shackling democracy so completely that it can't move at all.

The masses of people have neither the training nor the time necessary for research and "fruitful" discussion of the many problems with which we are confronted. Yet, the masses are privileged to determine—either directly or indirectly—what those policies shall be. Hence, it is imperative that some learn how to present their research and analysis in such a way that the masses can follow and have some basis upon which to direct intelligent action.

As I see it, the purpose of high school and college debate is to teach students how to present this data and research to the masses after leaving school; and not how to confuse and befuddle the masses after leaving school. For that reason the author has included the following paragraph or warning in his rules and regulations governing his annual high school speech tournament.

It is hoped that debate teams will make an attempt to meet each other on basic issues rather than try to sidestep each other or invent some unrealistic interpretation of the problem in the hope of winning a debate by surprise. *Local judges will be advised to mark down teams relying upon trickery or unethical tactics.* We need to develop logical and ethical leaders, not shysters and quacks. We have too many of those already.

Another type of shysterism is that of selecting phraseology with two possible interpretations so that if the opponents refute one "meaning" successfully the speakers can say, "We didn't mean that at all." I know some coaches who boast of their ability to confuse and confound opponents by preparing such "strategy" for their speakers.

Still another type of shysterism is that of juggling the same set of figures. One high school coach in our state once had her students prepare an affirmative and a negative chart on opposite sides of a cardboard (on which the juggling was done). When an astute opponent saw what was happening he simply picked up the chart, turned it over and said to the judge, "I don't know exactly what's wrong with the figures. They don't sound like the ones I have been studying, but I'll turn this chart over and let our opponents explain what's wrong with the figures." To cap the climax, the offending team's coach protested their loss on the grounds of unethical conduct on the part of the victorious team. Great day in the morning!

Some of the "shysterism" is due to ignorance rather than premediated plan. Being a

lawyer I know that a man is innocent until proven guilty, in the American philosophy of jurisprudence, and that there must be an intent before one can be held guilty of a crime. Perhaps, then, one should be hesitant about calling a person a shyster who commits trickery as a result of having such little knowledge of the question that he really thinks he is telling the "truth." However, there is such a thing in law as constructive intent, i.e., acting with such a reckless disregard for the rights of others that an intent is construed by law. I have a feeling that a debater on the college level or a coach on either high school or college level should be charged with "constructive intent" to commit shysterism when speakers delude and mislead as a result of not knowing enough about the subject to know the difference. The word "education" carries with it the connotation of responsibility to society rather than opportunity to exploit. This is particularly true of the person who is a product of the public supported schools and colleges.

A person who draws a check on a bank in which he has made no deposits is guilty of the crime of "hot checking." A person who draws a check for more money than he has on deposit is notified of an overdraft and is given a reasonable period of time in which to cover the excess amount. If after a reasonable time he does not make the additional deposit, he, too, is guilty of "hot checking." It seems to me that the person who has attended school sixteen or more years at public expense has drawn a lot of checks and it is time for him to cover the overdrafts. One deposit he is obliged to make in return for his years of schooling is that of honest, ethical, forthright leadership. Proper debate training is one way in which he may acquire the skill essential for that leadership. And to my way of thinking there is no substitute for proper debate training. But improper debate training is worse than no debate training at all. The "shysters" seem to sprout like Johnston Grass with no cultivation and no encouragement. But there is an intense need for the cultivation of someone to counteract the "shyster."

Let's clean house. Let's make debate so ethical and worthwhile that neither speech teachers within the profession nor teachers and administrators outside the profession can point to practices which we cannot defend. Any activity has shortcomings that are inherent in the activity, but there is no point in allowing non-inherent shortcomings to persist and pervade the activity.



Members of California Alpha: Left to right, Fred Francis, Bill Heyler, Ron Tabor, Jim Erickson (secretary-treasurer), Dr. Eugene R. Moulton (sponsor), Rod Skager (president) Jim King (keeper of key), Monte Brice, Sue Erickson, George Armstrong.



MSCW Suffragettes: Left to right, Marion Whitley, Virginia Pace, Roxie Young, Mary Lib Barrett, Barbara Kuykendall, Liz Smith, Glenda Pevey, Tiz Hildebrand.

Chapter Notes

THE UNIVERSITY OF REDLANDS

The California Alpha chapter is very active again this year. The debate teams and speakers have a fine record so far and seem well on the way toward upholding the forensic tradition on this campus. California Alpha will be host to 400 high school speakers at the National Orange Speech Tournament, March 26-27. Of great significance to the chapter is the coming National Convention of Pi Kappa Delta on the campus of the University of Redlands in 1955. Plans are under way to make the 1955 National Convention the biggest and best in the history of PKD. The University of Redlands feels it is a rare privilege to be host to all PKD's and will try to repay the confidence placed in us by giving you an outstanding convention. We are looking forward to seeing all of you in California in 1955.

MISSISSIPPI STATE COLLEGE FOR WOMEN

Break the Chains of Prejudice and Activate the Rights of Women were the campaign slogans of the delegates of Mississippi Gamma to the Mississippi Youth Congress held in the State Capitol, December 4-5. The suffragettes, wearing 19th century dresses, were unsuccessful in electing a woman President Pro-Tem of the Senate but were awarded first place for their campaign. This is the third time in four years the MSCW delegates have received this award. The MSCW senators also received the most Superior awards for individual participation in the Congress. Barbara Kuykendall, candidate for President Pro-Tem, served as temporary chairman of the first joint session of the Congress and received Superior ratings for her bill to grant the women of Mississippi the right to serve on juries, her acceptance speech, and as a debater and parliamentarian; Virginia Pace as a debater, speaker from the floor, parliamentarian, and for her bill favoring an investigation of funeral expenses;

Marion Whitley, for her nomination speech and as a parliamentarian; Roxie McClure Young for her bill advocating a higher salary scale for public school teachers; and Elizabeth Hildebrand for her bill requiring the removal of doors from discarded ice boxes. One hundred and thirty-three students from Mississippi junior and senior colleges participated in the Senate chamber of the Congress.

Gwendolyn Posey and Marianne Shaw have participated in the Millsaps College Debate tournament and the Deep South Debate Conference tournament at Mississippi College. They placed second in the senior division at the Deep South Debate Conference; Posey also placed second in oral reading. Six students attended the Alabama Discussion tournament. Seven students have qualified for membership in PKD.

ALABAMA DISCUSSION TOURNAMENT

Six of the twenty colleges and universities attending the University of Alabama Discussion tournament, November 5-7, were members of PKD. They were Alabama College, Carson-Newman, Mississippi State, Mississippi State College for Women, Spring Hill College, and Tennessee Tech. One hundred and thirty-eight students participated in five rounds of progressive discussion on the question of free trade. PKD's receiving ratings were: Superior (upper 5 per cent), Barbara Kuykendall, Mississippi State College for Women; Excellent (next 10 per cent), Charles Marion, Spring Hill; Helen Nash, Tennessee Tech; and Gwendolyn Posey, Mississippi State College for Women. Dr. Donald H. Ectoroyd (Iowa Epsilon) of the University of Alabama was director of the conference.

COLORADO A & M

Colorado Alpha through the Speechmaker's organization is planning an active forensic season under the direction of Professors Roy



Alabama College: Phyllis Jones, President of Alabama Beta, presents trophy to the winning dormitory president for the 1953-54 Intra-mural Discussion Tournament.

Nelson, Don Nelson, and Randall Ruechelle. For the first major event, they were host to the annual convention and tournament of the Rocky Mountain Forensic League, November 6-7, in which nine schools participated. Colorado State College of Education at Greeley was admitted this year to a membership composed of Brigham Young University, the University of Utah, Utah State College, Montana State College, the University of Wyoming, Denver University, the University of Colorado, and Colorado A & M. One unique feature of the meet was a Court of Ideas in which "McCarthyism—as a menace to individual liberties" was put on trial and acquitted. Next year's meet will be held at the University of Colorado.

ALABAMA COLLEGE

Professor Donald Springen is filling the place of Leonard Davis as director of forensics. Davis is on leave to complete requirements for the Ph.D. degree at Northwestern University.

Forensic activities were begun with wide interest in the intramural discussion tournament sponsored annually by the Alabama Beta chapter of PKD. Students have participated in the University of Alabama Discussion Tournament and the Millsaps College Debate Tournament. Future plans include

attending the Magnolia Speech Tournament, the Provincial at Georgetown, the Southern Speech Association Tournament (tentative) and individual debates with other colleges and universities. Springen completed his undergraduate work at the University of California and the M.A. at Northwestern University.

HAMLIN UNIVERSITY

The Minnesota Delta chapter initiated two new members last spring: Cleone Hillesland and Vivian Harju. Officers elected for this year were Russ Prickett, president; Harju, secretary; Jerry Jackson, historian. Jim Seeton was awarded the degree of Special Distinction; Prickett, the degree of honor; Jackson, the degree of Proficiency. This is Hamline's thirtieth year in PKD. In honor of the special occasion, the local chapter sponsored an invitational high school debate tournament, October 31. Eleven schools from the Twin Cities' area entered the tournament. The Randall Oratory Contest, an annual Hamline event, found ten orators competing for the Randall Prize, December 16. The winners will enter the Minnesota State Oratorical contest in March and the PKD provincial tournament in April.

BOWLING GREEN STATE UNIVERSITY

Ohio Eta is again undertaking an active program of forensics in all its phases: debate, individual events, and discussion. The year got off to a good start with two PKD members, Roger Kasten and Bud Weckesser, winning three of four debates at the Bradley University tournament in November. Weckesser also won a Superior in folktale reading and Kasten an Excellent in original oratory. The B. G. squad also plans to participate in five tournaments during December and January at Otterbein, Wayne, Akron, Ohio Wesleyan, and Ohio State. Debates before service clubs will begin February 8. These club programs constitute an important part of the forensic program. Last year the debaters spoke before 18 such groups.

SEATTLE PACIFIC COLLEGE

The Pacific Northwest Invitational Speech Tourney sponsored by the Forensic Department and Washington Beta was held Janu-

ary 8-9. Vera Lockhart is president of the local chapter of PKD. Patrycia Booker is Student Director of the Forensic Department. Committee chairmen for the tournament were John Silva, rooms; Elaine Jenson, scheduling and statistics; Robb Riggs, awards, purchasing and awarding; Sognia Mogisos, banquet; Booker, judging roster and assignments; Lockhart, registration.

COE COLLEGE

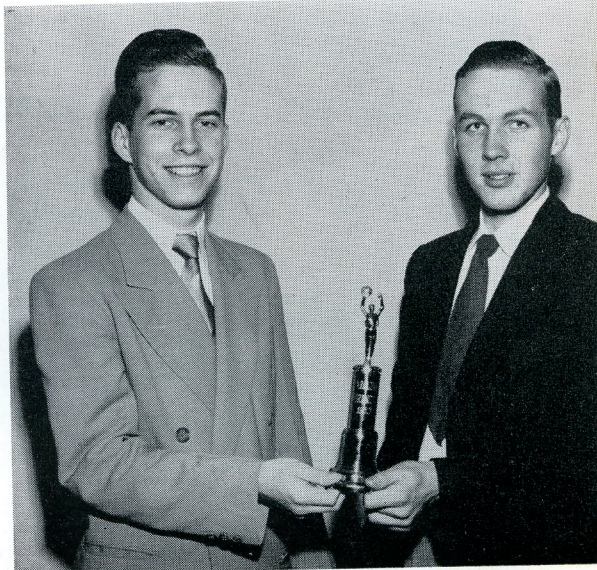
Eleven prospective debaters at Iowa Theta are planning to attend tournaments at Grinnell College, Bradley University, Iowa State, University of Illinois, and the University of Nebraska. This year's debating team consists of Bruce Platner, Monte Helme, Ann Peterson, Dean Overholser, Dave Marner, Gloria Gard, Valerie Palmer, Lee Forres, Janice Rathbun, Stuart Shaw, and Jim Tharrington. Miss Glo Rose Mitchell, formerly of Nebraska State, is director of forensics.

WISCONSIN STATE COLLEGE

Wisconsin State at Eau Claire has scheduled three forensic events on its campus for this year. On October 24, 220 high school students and 35 coaches from Wisconsin and Minnesota attended the Seventh Annual High School Discussion Clinic. On January 9, Eau Claire was host to their Tenth Debate Tournament for high schools. On February 18-20, the Eau Claire Speech Meet will be held. Events will include debate, discussion, extemporaneous speaking, oratory, after-dinner speaking, and folktale telling.

NORTHEAST MISSOURI STATE TEACHERS

Only three of the 15 colleges entered in men's and junior debate in the 14th Annual Midwest Speech Tournament, December 4-5, held on the campus of Missouri Theta, came through the competition with perfect records. Undefeated were teams from the University of Illinois at Chicago and Iowa Central in the men's division and William Jewell in the junior division. In other events, Jan Thomas of Northeast Missouri Teachers and Dick Byrne of William Jewell tied for first in poetry reading; Bette Brunsting, Iowa Central, was third. Chuck Guswelle, Westminster, placed first in original poetry. The top after-dinner



Tennessee Tech: Left to right, James N. Luton and Alex Nichols hold the trophy they won for the best affirmative team at the South Carolina Forensic.

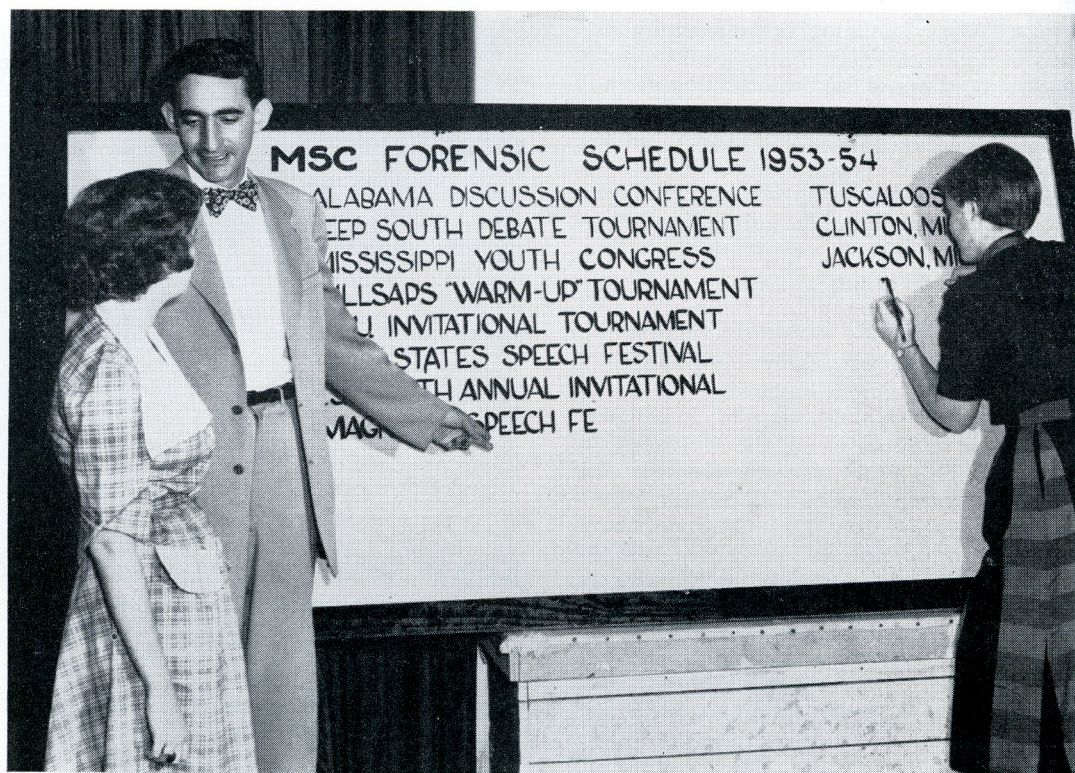
speaker was John Isalata of U.I.C. Sherod Collins, Past-President of PKD, is director of the tournament.

TENNESSEE TECH

The Tennessee Delta chapter opened its debate season by attending the South Carolina Forensic at Columbia, November 20-21. The affirmative team of Alex Nichols and James Luton won five out of six debates to be chosen the top affirmative team in the tournament. Jane Dye and Helen Nash represented Tech on the negative. Jane Dye is president of Tennessee Delta. Assisting her are Nichols and Roger Crowe. Nash is president of the Speech Activities Club, which prepares students for PKD membership. Future plans include attending the Tennessee State tournament, the South Atlantic, the Sewanee Debate tournament, PKD Provincial, the West Point Regional. Herman Pinkerton, Director of Forensics, has been appointed to serve on the Regional West Point Committee.

OKLAHOMA EAST CENTRAL COLLEGE

More than 300 students from 30 colleges and universities from seven states participated in 48 different contests during the 17th



Mississippi Southern: Laura Ann Wilber (president) paints schedule of forensic events while Frank Barber (PKD and president of MSC student body) persuades freshman Lila Caffrey that forensics is an outstanding college activity. The sign when completed will be displayed on the Southern campus.

Annual Forensic Meet held at Oklahoma Eta, December 3-5. Sweepstakes winners were: Senior Men—Superior, Southwest Missouri, University of Houston, Phillips University; Excellent, Louisiana Tech, Oklahoma Central, North Texas State. Senior Women—Superior, Southwest Missouri, Phillips University, Northwestern Louisiana; Excellent, Austin College, Southwest Kansas, Emporia (Kansas) Teachers. Junior Men—Austin College, University of Houston, North Texas State. Excellent, University of New Mexico, Southwest Missouri, Louisiana Tech. Junior Women—Superior, Southwest Missouri, Austin College, Phillips University; Excellent, Louisiana Tech, Oklahoma Central, Texas Tech.

MISSISSIPPI SOUTHERN COLLEGE

Forensic activities for Mississippi Delta this year include the First Annual Forensic Tournament, Louisiana Tech; the Deep South Debate Tournament, Mississippi College; the

Millsaps College Debate Tournament; the Gulf States Speech Festival sponsored by Mississippi Southern; the Mississippi Youth Congress, Jackson; the L.S.U. Invitational Tournament; the Florida State University Invitational; the MSCW Magnolia Speech Tournament; the Southern Speech Association Tournament, Dallas; and the PKD provincial at Georgetown College.

M.S.C. students are also debating the high school question in three workshops. They went to Baton Rouge in November to debate L.S.U. before high school students and teachers of Louisiana and in December sponsored a high school institute on the M.S.C. campus and another in Jackson. Dr. Mary L. Gehring, PKD sponsor, will go to the University of Georgia in January to assist in their second Annual High School Forensic. At present Southern is holding its annual intrasquad debate tournament. Teams participating are Laura Ann Wilber and Dale Lindsey, Frank Barber and Sarah McMullan, Forest Blount

and James Fortinberry, David Miller and Howard Stroud, Peggy Whitman and Nancy Swetman, Kenneth McFarland and Jim Sherman, Jim Dukes and Jim Buck, French Brown and Mel Jones, Lila Caffrey and Bill Simmons. The winning team will have its name engraved on a gold plaque as the M.S.C. Honor Debate Team for 1953.

Although Barber and Wilber are the only two actives in PKD at present, the large number interested in the current debate program indicates a large number of new members. Barber and Wilber were recently elected to *Who's Who Among Students at American Colleges and Universities* thus giving Mississippi Delta the peculiar distinction of having its membership elected 100 per cent to *Who's Who*.

IOWA CENTRAL COLLEGE

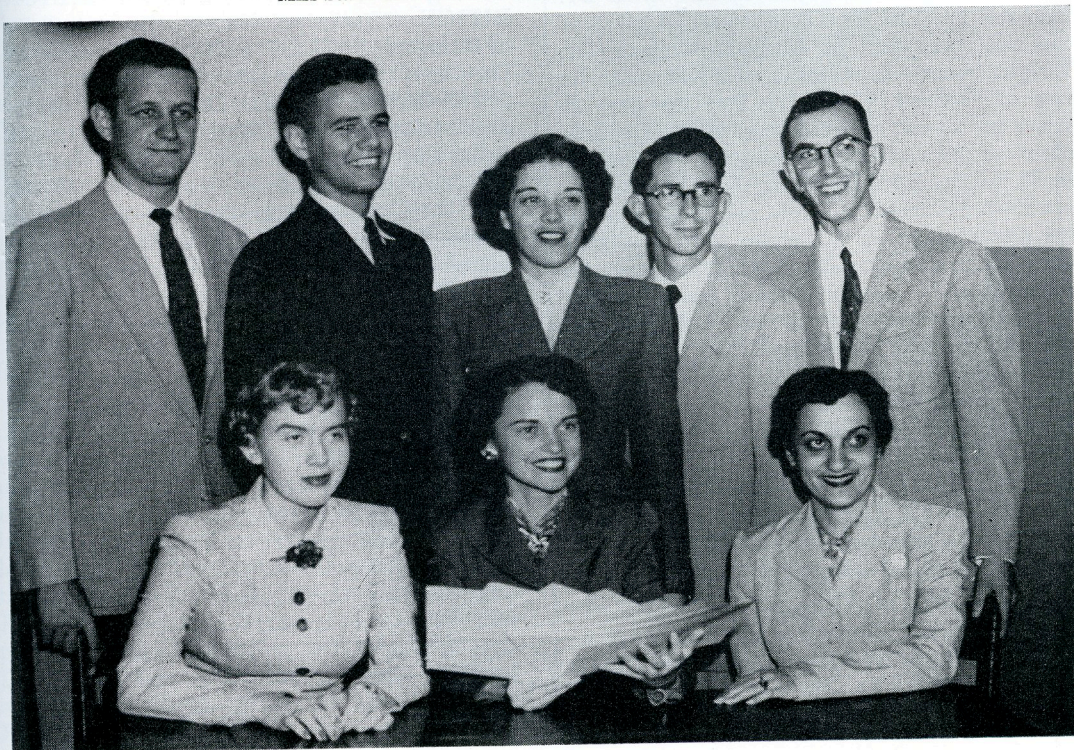
Alvin Poppen and Larry Wendell defeated teams from William Jewell, Northeast Mis-

souri Teachers, and two teams from Washington University to tie for first place in the men's division of debate at the Midwest Speech Contest held at Northeast Missouri Teachers, December 4-5. Mary Alice Buwalda and Beulah Roorda won two of four debates in the women's division. Bette Brunsting placed third in poetry reading.

WASHINGTON STATE COLLEGE

Members of Washington Gamma placed first in Women's Debate at the Inland Empire Tournament held at Pullman, November 20; first in the Inland Empire Men's Debate Tournament held at Missoula, Montana, December 4-5; and first and second in the championship and practice flights of the Men's Division and in the Women's Division of the Columbia Valley Debate Tournament held at Pullman, November 20-21. Seventeen colleges entered 90 debating teams in the Columbia Valley Tournament.

Members of the Southwestern Louisiana Institute debate squad who won top honors in the Louisiana Tech tournament, November 13-14. They won first place in two of the three divisions of debate and excelled in interpretative reading, extemporaneous speaking, and radio speaking. Members of the squad: Left to right, front row, Beth Roberts, Jeanette Stark, Beatrice Yezbeck; back row, James Dugal, Nathan Stansbury, Dorothy Fay Perry, Karl Cavanaugh, Rolland Morvant. Miss Stark holds the certificates won at the tournament.



Ridin' the Provinces

Dear PKD's:

Another Christmas has come and gone and we are facing a New Year. One, I hope, that will bring happiness and good health to all of you. Ours was a very happy Christmas, our son, who has been overseas for two years, is now at home. I appreciate the large response to my request for news and articles.

Here and There

I enjoyed having breakfast, December 4, in Jackson, with National Council Member ROY D. MURPHY and lunch at the Alabama Discussion tournament with FRANKLIN SHIRLEY, Past-Governor of the Province of the Southeast and Chairman of the Wake Forest Speech Department. Franklin is on leave working on his doctorate at Florida University. Dr. MARY L. GEHRING, one of GLENN CAPP'S former debaters, now Director of Forensics at Mississippi Southern, did a superior job of directing the Mississippi Youth Congress. Enjoyed talking with Dr. FRANK L. WRIGHT at the inauguration of the new president at Alabama College. Dr. Wright became a member of PKD while he was at Greeley (1915-23). For the past 29 years he served as Chairman of the Department of Education, Washington University, in St. Louis. ROY D. MAHAFFEY, Immediate Past-President of PKD, asked for it when he participated in a debate with speakers from Oxford University. It must be either an example of "... where angels fear to tread" or that "some who teach can." I don't know the results but knowing "Hap," I'm sure PKD lost no prestige. PKD's who are national committee members of the American Forensic Association include ANNABEL HAGOOD and GRACE WALSH, constitution revision; WOFFARD G. GARDNER, WALDO BRADEN, nominating; MARY L. GEHRING, membership; LESTER L. McCRERY, national council. GRACE WALSH, faculty sponsor of Wisconsin Zeta, is the author of the official analysis and interpretation of the high school discussion and debate questions published annually by the National University Extension Division and credited

by Dr. Bower Aly of the University of Missouri.

I Hear From the Alumni

Dr. ARTHUR W. SEEBART, professor of forensics at Polytechnic-Intermountain College, Billings, Montana, 1929-43, has been pastor of the Holbrook Congregational Church, Livingston, Montana, since November, 1943. The Polytechnic-Intermountain College conferred an honorary D.D. on Dr. Seebart at the commencement exercises of 1944. He has served, since 1947, as Executive Secretary of the Montana Council of Churches and is listed in *Who's Who in the West* and the *Directory of American Scholars*. In 1951, he was the representative of the churches cooperating denominations in Montana to the National Council of Churches of Christ in America held in Cleveland. Four of the 1953-54 Rotary Fellows are members of PKD. EUGENIA HORNE (Miami) is attending the University of London; DALTON BURCH (Mississippi Delta), the University of Glasgow; PHILLIP PHIBBS (Washington Gamma), the University of Cambridge; and JOHN WARD (Kansas Delta), the University of Edinburgh. JIM KNAPP (Nebraska Zeta) had the lead in their fall production of *The Male Animal*, November 12-13. CHONG MO PAK, Korean orator and member of South Dakota Beta, is attending graduate school at the University of Wisconsin. PAUL CASHMAN, former faculty sponsor of Minnesota Delta, is completing his doctorate at the University of Minnesota. JEROME FINN (Wisconsin Delta) is attending Law School at Marquette University after a summer of travel in Europe. From Oregon Alpha—JOECILLE FULHAM, who was an outstanding speaker and president of the Student Body, is now doing television shows in New York City. She will open some time in the spring in a Broadway show. Dr. JOHN ADAMS, who attended the Knoxville Convention, is now director of research at Temple University. SARA ANN McBRIDE has spent the last two years in Europe on the entertainment program of the U. S. Army. PAUL LITTLE, who won top honors at the Kala-

mazoo Convention, is doing a television show in the San Francisco area. **MARY ELLEN JENKS** (Wisconsin Zeta) has been named "Alice in Dairyland" by the Wisconsin Department of Agriculture. During the year, Mary Ellen will represent Wisconsin at fairs, conventions, centennials, and benefits over the U. S. She is majoring in speech and Social Studies at Eau Claire and writes that her training in speech has been of unestimable value in winning the award and performing her duties. Four members of PKD have been elected officials of Rotary International for the 1953-54 fiscal year. **ALTON B. CHAPMAN** (Texas Theta) of Floydada, Texas, Judge of the 110th Judicial District of Texas, is a member of the Constitution and By-Laws Committee. He has served as President of the District and Appellate Judges Association of Texas, Secretary of the Texas Milking Shorthorn Breeders Association, District Chairman of the Boy Scouts of America, and District Governor of Rotary. **CHARLES L. BIGLER** (Kansas Eta), District Governor, is an investment broker in Goodland, Kansas. He is a former publisher of the *Daily News* in that city, and is a Past-President of the Sixth District Editorial Association. **HARRY L. DILLION** (Oregon Alpha), District Governor and Past-President of the McMinnville Rotary Club, is President of Linfield College, Chairman of the Board of Directors of the Oregon Colleges Foundation, and President of the Independent College Association of Oregon and the Oregon Baptist Convention. **KARL C. LEEBRICK** (Ohio Iota), District Governor of Hawaii, is Liaison Officer and Historian of the Trust Territory of the Pacific Islands of the U. S. He is a former Vice-President of the University of Hawaii, Past-President of Kent State University and of the Rotary Club of Waikiki.

In Memoriam

Pi Kappa Delta regrets the news of the death of Mrs. **NAN COON NORD**. Mrs. Nord was a member of South Dakota Epsilon and participated in the Topeka National Convention in 1938. She won many speech honors before her graduation from Sioux Falls College in 1940. After graduation, she taught in the high schools of Watertown and Sioux Falls and with her father, **J. D. COON**, a past National Council Member of Pi Kappa Delta, taught in the Dale Carnegie courses at Nettleton Commercial College in Sioux Falls.

The vast amount of material you sent me has made the composition of this issue more difficult than usual. I hope I have not omitted the major portions of any article. I appreciate your very fine response and please don't forget the March issue.

YOUR EDITOR

PROVINCIAL TOURNAMENTS

Province of Missouri and Province of Illinois—Joint tournament, Southern Illinois University, Carbondale, Illinois, April 8-10. C. Horton Talley and Albert J. Croft, directors.

Province of the Pacific—College of the Pacific, Stockton, California, April 8-10. Events will include debate, oratory, extempe and impromptu speaking, and discussion. Held with the College of Pacific Invitational. Ed Betz, director.

Province of the Sioux—Yankton College, Yankton, South Dakota. Date to be announced. Events will include men and women divisions in debate, oratory, after-dinner speaking, and extempe. Awards will be given in the form of trophies in both sections of debate and medals for the first three places in other events.

Province of the Lower Mississippi—Southwestern Louisiana Institute, Lafayette, Louisiana, April 15-17. Tournament committee—H. Waldo Masson, Lucille Magnon, Albert L. Capuder, William W. Ellis. Program committee chairman, Glenn Capp. Entertainment committee—Lucille Magnon, Dorothy Fay Perry, Nathan Stansbury. Roy D. Murphy, director.

Province of the Lakes—University of Maine, Orono, Maine, March 22-24. Wofford G. Gardner, director.

Province of the Upper Mississippi—Wisconsin State College, River Falls, Wisconsin, April 13-15. Tentative committee arrangements include, Grace Walsh, women's debate; Allwin D. Monson, men's debate; Pauline Krueger, women's extempe; Theodore Nelson, men's extempe; Joseph Robbie, women's oratory; Kenneth L. Berger, men's oratory; Kenneth Wilkens, Brother J. Phillip, David W. Shepard, all-tournament; Dick Granum, Margaret Helmer, student chairmen; Marion E. Hawkins, director.

Province of the Southeast—Georgetown College, Georgetown, Kentucky, March 25-27. Events, men and women divisions in debate, oratory, and extempe speaking. Discussion and after-dinner speaking will be included if chapters desire. Write the director. Free housing for women and the first fifty men who register. Mrs. John H. Melzer, director.

PI KAPPA DELTA DIRECTORY

This directory is as accurate as the information we have permits it to be. If the chapter line is blank, the secretary had received no reply to his request for this data by the time the material was sent to the editor.

State and College	Chapter President	Sponsor and Address
ALABAMA Alabama College Spring Hill College	Phyllis Jones	Ellen-Haven Gould, Montevallo J. T. Walsh, Spring Hill
ARIZONA Arizona State College	Frederick Buekl	Dean F. McSloy, Tempe
ARKANSAS Ouachita College Arkansas State College		Arkadelphia O. F. White, Jonesboro
CALIFORNIA University of Redlands California Institute of Technology College of the Pacific University of California George Pepperdine College San Diego State College Pasadena College	Rodney Skager Sheldon Nicolayson John Antignas	Eugene R. Moulton, Redlands Lester R. McCreary, Pasadena Ed Betz, Stockton Wesley Lewis, Los Angeles Emmitt T. Long, Los Angeles John W. Ackley, San Diego James F. Jackson, Pasadena
COLORADO Colorado A. & M. Colorado State College of Education Western State College	Kenneth Iverson Harold Kauffman Mary Waldorf	Roy C. Nelson, Ft. Collins Roy L. DeBoer, Greeley Martin Hatcher, Gunnison
FLORIDA John B. Stetson University		De Land
GEORGIA University of Georgia, Athens University of Georgia, Atlanta	Frank Gaines Preston Lee Holland	David B. Strother, Athens H. E. Smith, Atlanta
IDAHO College of Idaho Idaho State College	George Knight-Smith Robert Younger	Erwin H. Schwiebert, Caldwell Wayne E. Hoogestran, Pocatello
ILLINOIS Illinois Wesleyan University Eureka College Carthage College Bradley University Monmouth College Illinois State Normal North Central College Shurtleff College Wheaton College Western State College Augustana College De Paul University Northern Illinois State Teachers Illinois College The Principia Eastern State College James Millikin University Southern Illinois University Greenville College	John F. Dale Paul Johnson William Boege Betty Rave Merton D. Lueptow Hillary Hallett Roger Kvam Robert L. Anderson Jon Knowles David Brick Richard P. Ruby Charles Tucker Charlotte Nissley	Marie J. Robinson, Bloomington I. H. Sparing, Eureka William Morgan, Carthage L. E. Norton, Peoria Monmouth Ralph A. Micken, Normal Glen Reddick, Napierville Frederic Fadner, Alton C. L. Nystrom, Wheaton Macomb Martin H. Holcomb, Rock Island Chicago Paul Crawford, DeKalb Lloyd P. Dudley, Jacksonville Clayton D. Ford, Elsau Charleston Decatur C. Horton Talley, Carbondale George T. Tade, Greenville
INDIANA Franklin College		J. D. Kocher, Franklin
IOWA Central College Morningside College Simpson College Upper Iowa University Coe College Westmar College Dubuque University Drake University William Penn College Luther College Buena Vista College	Alvin Poppen Robert E. Baxter Bruce K. Bowersox	Cunera Van Emmerick, Pella Frederic W. Hile, Sioux City Indianola Edward J. Lautner, Fayette J. T. MacKenzie, Cedar Rapids Alice Kruse, Le Mars Edward Thorne & Lewis W. Furda, Dubuque Ray Berrier, Des Moines Oskaloosa Kenneth Berger, Decorah Gladys Kuehl, Storm Lake

State and College	Chapter President	Sponsor and Address
KANSAS Ottawa University Washburn Municipal University Southwestern College Kansas State Teachers College Kansas Wesleyan University Kansas State Teachers College Baker University Sterling College Bethany College Fort Hays State College Bethel College McPherson College	Jean Kirkman Wayne Stratton Jo Ann Puffman Lowry Norman Willson Joanne Gallagher Marthabel Maughlin Francis Don McKibbin Eldon Laidig Robert Wise	Dale Purcell, Ottawa Charles J. Logas, Topeka Edna C. Sorber, Winfield Charles Masten, Emporia Salina Mary M. Roberts, Pittsburg Baldwin City Katherine Berkstresser, Sterling George A. Hinshaw, Lindsberg J. R. Start, Hays Wm. T. Wilkoff, North Newton Maurice A. Hess, McPherson
KENTUCKY Georgetown College Centre College Kentucky Wesleyan College	A. E. Lacy Richard Parks	Mrs. John H. Melzer, Georgetown Wes T. Hill, Danville Owensboro
LOUISIANA Louisiana College Centenary College Louisiana Polytechnic Institute Southwestern Louisiana Institute Northwestern State College	Stan Clark Duane Cloud Beth Dubus Vera Graham	Jack N. Carter, Pineville Joseph Gifford, Shreveport Wilma Baugh, Ruston Roy D. Murphy, Lafayette Donald L. Graham, Natchitoches
MAINE University of Maine	Constance Zoschka	Wofford G. Gardner, Orono
MICHIGAN Kalamazoo College Hope College Michigan State College Michigan State Normal College University of Detroit Central Michigan College of Education	Alice Hyers Barbara Brinks Patricia Gravelle	Ethel A. Kaump, Kalamazoo Wm. Schrier, Holland Frederick Alexander, East Lansing J. P. Kelley, Ypsilanti Henry Schneidewind, Detroit Herbert L. Curry, Mt. Pleasant
MINNESOTA Macalester College St. Olaf College Gustavus Adolphus College Hamline University College of St. Thomas Concordia College St. Mary's College St. Catherine	R. Davis Berg Bernice Heckt Russell Prickett Ronald Gandrud Nancy Adams	Mrs. Harold Krieger, St. Paul Theodore F. Nelson, Northfield Evan E. Anderson, St. Peter David W. Shepard, St. Paul St. Paul Allwin D. Monson, Moorhead Brother J. Phillip, Winona Joseph Robbie, Minneapolis
MISSISSIPPI Millsaps College Mississippi State College Mississippi State College for Women Mississippi Southern College	Mary Elizabeth Barrett Laura Ann Wilber	E. R. Wallace, Jackson Charles E. Lawrence, State College Harvey Cromwell, Columbus Mary L. Gehring, Hattiesburg
MISSOURI Westminster College Central College William Jewell College Culver-Stockton College Central Missouri State College N. E. Missouri State Teachers College Southeastern State College Missouri Valley College Tarkio College Drury College Rockhurst College St. Louis University	Steve Adamson William Beard Edward Gaul Roy Griggs Pat O'Malley Stanley Grimm Norman E. Megiff	John Randolph, Fulton Harold C. Svanoe Georgia Bowman, Liberty L. L. Leftwich, Canton Gilbert Rau, Warrensburg Sherod J. Collins, Kirksville Forrest H. Rose, Cape Girardeau C. Gratton Kemp, Marshall D. W. Lewis, Tarkio Robert L. Wilhoit, Springfield Kansas City W. P. Sandford, St. Louis
MONTANA Montana State College	Janis Pettijohn	K. D. Bryson, Bozeman
NEBRASKA Nebraska Wesleyan University Doane College Hastings College State Teachers College University of Omaha Midland College State Teachers College	Gary Lemmon Don Sherrill Sharon Erdkamp Kenneth Gilreath	A. J. Mueller, Lincoln Crete Robert Tuttle, Hastings H. L. Ahrendts, Kearney Alfred Sugarman, Omaha Sara Hawkinson, Fremont Lenore P. Ramsey, Wayne
NORTH CAROLINA Wake Forest College Lenoir Rhyne College Appalachian State Teachers College	Leroy Carwyle David C. Wright Jr.	Carol J. Oldham, Wake Forest Albert Keiser, Hickory D. J. Whitener, Boone

Chapter President	State and College	Sponsor and Address
OHIO		
Baldwin-Wallace College		D. T. Burns, Berea
Heidelberg College		Archie Thomas, Tiffin
Hiram College	John Mendiola	Warren D. Mitchell, Hiram
University of Akron	Sally Kohnz	R. H. Sandefur, Akron
Otterbein College	James W. Gibson	William Hall, Westerville
Marietta College	John Sloan	Ruth A. Wilcox, Marietta
Bowling Green State University	Bud Weckesser	Donald C. Kleckner, Bowling Green
Kent State University	Sonia Andel	James N. Holm, Kent
OKLAHOMA		
Oklahoma A. & M. College	Joan Talley	Harry H. Anderson, Stillwater
University of Tulsa		Tulsa
Oklahoma Baptist University		Shawnee
Oklahoma City University	Carolyn Wadkins	Jake Hoover, Oklahoma City
East Central State College		D. J. Nabors, Ada
Southeastern State College	Helen Tanner	Ruth Hatchett, Durant
Central State College	John Worley	Joe C. Jackson, Edmond
Phillips University		James M. Ladd, Enid
Northeastern State College		Ingram, Tahlequah
Southwestern State College	Norman Monroe	Cedric L. Crink, Weatherford
OREGON		
Linfield College	Teddy McPhee	R. D. Mahaffey, McMinnville
Lewis and Clark College	Thomas Goldsmith	Neil Sabin, Portland
PENNSYLVANIA		
Grove City College	James Gaut	H. M. Burrowes, Grove City
Seton Hill College		Greensburg
SOUTH CAROLINA		
University of South Carolina		Columbia
SOUTH DAKOTA		
Dakota Wesleyan University		George McGovern, Mitchell
Huron College		Harold C. Larson, Huron
Yankton College		R. J. De Laubenfels, Yankton
S. D. State College	William Schaphorst	A. R. Christensen, Brookings
Sioux Falls College	Richard Barcus	Paul Roten, Sioux Falls
S. T. S. Northern	Charles Peterson	William Dodge, Aberdeen
Augustana College		Hugo A. Carlson, Sioux Falls
TENNESSEE		
Maryville College	Naomi Burgos	A. F. Pieper, Maryville
East Tennessee State College	A. L. Addington	Chase S. Winfrey, Johnson City
Tennessee Polytechnic Institute	Jane Dye	Herman Pinkerton, Cookeville
Carson-Newman College	James Doyle Casteel	E. W. Sydnor, Jefferson City
Middle Tennessee State College	Dimple Moncrief	Lane L. Boutwell, Murfreesboro
TEXAS		
Trinity University		Mrs. Barbara Vance, San Antonio
Howard-Payne College	Danny Proctor	C. M. Vinson, Brownwood
Mary Hardin-Baylor College	Alice McCrary	William H. Vann, Belten
Texas Christian University	Harry Lee	E. L. Pross, Ft. Worth
North Texas State College		J. Rex Weir, Denton
Hardin-Simmons University	James Hanks	W. A. Stephenson, Abilene
Baylor University	Lester Robbins	Glenn R. Capp, Waco
Sam Houston S. T. C.		Huntsville
Southwestern Texas State College	Sally Nicklas	Elton A. Abernathy, San Marcos
Stephen F. Austin State Teachers College		Robert B. Capel, Nacogdoches
Texas A. & I.		Kingsville
Abilene Christian College	Dan Wieb	Fred Barton, Abilene
WASHINGTON		
College of Puget Sound	Curtis King	Charles T. Battin, Tacoma
Seattle Pacific	Vera Lockhart	Paul F. Rosser, Seattle
State College of Washington	Malcolm Edwards	W. H. Veatch, Pullman
Whitworth College		W. L. Martin, Spokane
Pacific Lutheran		Theodore O. H. Karl, Parkland
Western Washington College of Education		Bellingham
St. Martin's College		Olympia
WEST VIRGINIA		
West Virginia Wesleyan		Buckhannon
Marshall College	Joe Duffey	B. W. Hope, Huntington
WISCONSIN		
Ripon College	Harry Fisher	Charles A. White, Ripon
Carroll College	Annette Avers	Venton H. Scott, Waukesha
River Falls State College	Richard Granum	Marion E. Hawkins, River Falls
Whitewater State College	Carolyn Schloemer	V. T. Von Trebra, Whitewater
Eau Claire State College	Richard A. Whalen	Grace Walsh, Eau Claire

PRICE LIST

PI KAPPA DELTA KEYS

Large or Fob size, including pearls or amethysts.....	\$ 4.25
Small or Lavalier size, with pearls or amethysts.....	3.50
Miniature (key-pin), with pearls or amethysts.....	3.00

Add to the above prices the following charges for other jewels and attachments

Rubies, each.....	.75
Sapphires, each.....	.50
Turquoise, each.....	.50
Emeralds, each.....	1.00
Diamonds, each.....	
large.....	10.00
small.....	8.00
for miniature key-pin.....	3.50
White Gold (worn by Social Distinction members only)....	1.00
Pin Attachment with clasp for large or small keys.....	1.00
Guard chain for pin attachment.....	.50
Guard chain with gold initial pin (chapter Greek letter)....	1.50

Add to all prices above

Handling charge, per key.....	.50
Charge for changing jewels in old keys.....	.50
Federal and state taxes on all items except handling charge and jewel changing charge.....	22%

ALLOWANCES

Gold in yellow gold keys exchanged for white gold.....	
Large and small size keys.....	1.50
Miniature.....	1.00
Full value on rubies, sapphires, turquoises, and emeralds exchanged for new jewels or white gold key.....	

Jeweling of various degrees and orders

Degrees

Fraternity.....	ruby eye
Proficiency.....	amethyst eye
Honor.....	emerald eye
Special Distinction.....	diamond eye

Orders

Oratory.....	ruby circle
Debate.....	pearl circle
Instruction.....	emerald circle
Honorary membership.....	sapphire circle
Any two orders.....	turquoise circle
Three orders.....	diamond circle

Address all key orders to the National Secretary, D. J. Nabors,
East Central College, Ada, Oklahoma.

CHAIRMEN OF THE MAJOR COMMITTEES OF PKD

Dr. Ethel Kaump—Committee on Constitutional Revision

Dr. Roy D. Murphy—Committee on Charters and Standards

Dr. Theodore F. Nelson—Committee on Coordination of Province Activities

Dr. Larry E. Norton—Representative on the National Questions Committee

Professor Roy D. Mahaffey—Administrative Assistant to All Committees.

Members of Pi Kappa Delta are urged to correspond with these chairmen on matters of appropriate business.