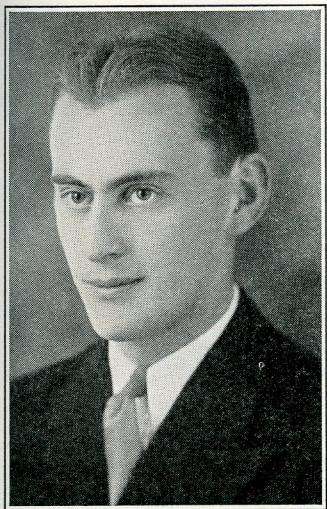


gation of the Platt Amendment; British-American Oil Rivalry in Mexico; United States Foreign Service—a Field for College Men; Who Profited by the Recent Reciprocal Pact With Canada? Shall America Defend the Rights of Small Nations; Let's Join the League of Nations; Intervention or Cooperation in Cuba; The Japanese-American War Myth; Beware of Entangling Foreign Alliances; America Watched Remilitarization of the Rhine; The Status and Effect of Our Philippine Policy; American Foreign Policy—from Wall Street or Pennsylvania Avenue; Woodrow Wilson—The Diplomatic Idealist; The United States Foreign Department as a Business Solicitor; The Smoot-Hawley Tariff and its Effect on Diplomatic Relations; Roosevelt Abandons Disarmament; Can the United States have a Fixed Foreign Policy; The United States Justifies Economic Nationalism; and six other topics given in the finals below.

The numbers indicate the order in which the contestants placed, not that in which they spoke.

### ROUND ONE



Don Larson, Augustana College, South Dakota Eta, third in extemp. Senior, twenty-one, economics major. Winner of debate in provincial, 1933; extemp, 1935; and state peace oratory in 1935. Plans to study law and business administration.

Group A. 1, Franklin, James J. Pease; 2, Presbyterian, H. M. Wilson; 3, Wake Forest, George Copple; 4, Battle Creek, Lee Mallison; 5, Greeley State, Eugene Kalney; 6, Southwestern, Robert Youle; 7, Kalamazoo, Robert Beamier.

Group B. 1, Dakota Wesleyan, Franklin Stark; 2, Illinois Wesleyan, Eugene Balsley; 3, Central (Iowa), Robert Renaud; 4, Trinity, Lloyd Stowers; 5, Washburn, William Townsend; 6, Kearney Teachers, Walter Murrish; 7, Mississippi State, R. L. Dabbs; 8, Coe, John Nicholl.

Group C. 1, Louisiana College, Jack Matthews; 2, Yankton, Ivan Anderson; 3, Simpson, Glen Harlan; 4, St. Thomas, Martin Cogley; 5, Georgetown, Lewis Bratcher; 6, Eureka, Samuel Harrod; 7, Howard Payne, Elton Greenlee.

Group D. 1, Otterbein, Gerald Riley; 2, Edmond, Don Wright; 3, Concordia, Ralph Fjelstadt; 4, Aberdeen, Joseph Robbie; 5, Emporia Teachers, Mont Hilleary; 6, Monmouth, John Moffett.



Group E. 1, Hardin-Simmons, Kelley Barnett; 2, Akron, Paul Bagwell; 3, South Dakota State, Max Meyer; 4, Macalester, Carl Bahmeier; 5, Pittsburg, Lee Howard; 6, Illinois State Normal, Lawrence Nelson; 7, Durant, Tom Knott.

Group F. 1, Baylor, Frank Rossen; 2, Sioux Falls, T. Van Ausdall; 3, William Penn, Robert Rinden; 4, Ripon, Allan Mitchie; 5, Sterling, William Pinkerton; 6, Ada, Leroy Martin.

Group G. 1, Augustana (South Dakota), Don Larson; 2, San Marcos, Wilson Nolle; 3, Alva, Howard Harpham; 4, Nebraska Wesleyan, Dean Lane; 5, Wheaton, Harold Mackenzie; 6, Bethany, Eugene Nelson; 7, Toledo, George Lynn.

Group H. 1, Cape Girardeau, Gus Margraf; 2, Stephen F. Austin, Don Langston; 3, Macomb, Wayne Thompson; 4, Madison, Andy White; 5, Westminster, William Newman; 6, Fort Hays, John Willcoxon; 7, Kentucky Wesleyan, Truman Morris.

Group I. 1, Tulsa, Jackson Hays; 2, Hastings, Max Franzen; 3, Rollins, Sterling Olmstead; 4, Augustana (Illinois), Kenneth Walker; 5, Colorado State, John McCafferty; 6, Puget Sound, John Leik; 7, Ozarks, Homer Brooks; 8, Michigan State, Elmer Perrin.

Group J. 1, Redlands, Weston McIntosh; 2, DeKalb, George Strawn; 3, Flagstaff, Reed Freeman; 4, North Carolina State, J. Gaw; 5, Parsons, Scott Jordan; 6, North Central, Wendell Slabaugh; 7, Maryville, Paul Hartman.

## ROUND TWO

Group A. 1, Wake Forest, George Copple; 2, Sioux Falls, T. Van Ausdall; 3, Fort Hays, John Willcoxon; 4, Wheaton, Harold Mackenzie; 5, Hardin-Simmons, Kelley Barnett; 6, Mississippi State, R. L. Dabbs; 7, Georgetown, Lewis Bratcher.

Group B. Augustana (South Dakota), Don Larson; 2, Edmond, Don Wright; 3, Otterbein, Gerald Riley; 4, Flagstaff, Reed Freeman; 5, Macomb, Wayne Thompson; 6, Coe, John Nicholl; 7, Ozarks, Homer Brooks.

Group C. 1, St. Thomas, Martin Cogley; 2, Akron, Paul Bagwell; 3, Maryville, Paul Hartman; 4, William Penn, Robert Renaud; 5, San Marcos, Wilson Nolle; 6, Augustana (Illinois), Kenneth Walker; 7, Madison, Andy White.

Group D. 1, Rollins, Sterling Almstead; 2, Concordia, Ralph Fjelstadt; 3, North Central, Wendell Slabaugh; 4, Stephen F. Austin, Don Langston; 5, Nebraska Wesleyan, Dean Lane; 6, Southwestern, Robert Youle; 7, Durant, Tom Knott.

Group E. 1, DeKalb, George Strawn; 2, Cape Girardeau, Gus Margraf; 3, Macalester, Carl Bahmeir; 4, Colorado State, John McCafferty; 5, Toledo, George Lynn; 6, Kalamazoo, Robert Beamier; 7, Washburn, William Townsend.

Group F. 1, Redlands, Weston McIntosh; 2, Ripon, Allan Michie; 3, Illinois Wesleyan, Eugene Balsley; 4, Franklin, James Pease; 5, Hastings, Max Franzen; 6, Heidelberg, Jack Matthews; 7, Kentucky Wesleyan, Truman Morris.

Group G. 1, Dakota Wesleyan, Franklin Stark; 2, Baylor, Frank Rossen; 3, Parsons, Scott Jordan; 4, Emporia, Mont Hilleary; 5, Eureka, Samuel Harrod; 6, Puget Sound, John Leik; 7, Ada, Leroy Martin.

Group H. 1, Pittsburg, Lee Howard; 2, Alva, Howard Harpham; 3, Yankton, Ivan Anderson; 4, Monmouth, John Moffett; 5, Battle Creek, Lee Mallison; 6, Trinity, Lloyd Stowers; 7, Westminster, William Newman.

Group I. 1, Sterling, William Pinkerton; 2, Howard Payne, Elton Greenlee; 3, Illinois State Normal, Lawrence Nelson; 4, Aberdeen, Joseph Robbie; 5, Greeley State, Eugene Kalney; 6, Michigan State, Elmer Perrin; 7, Central (Iowa), Robert Renaud.

Group J. 1, Presbyterian, H. M. Wilson; 2, Tulsa, Jackson Hays; 3, Simpson, Glenn Harlan; 4, North Carolina State, J. Gaw; 5, Bethany, Eugene Nelson; 6, South Dakota State, Max Meyer; 7, Kearney, Walter Murrish.

### ROUND THREE

Group A. 1, Baylor, Frank Rossen; 2, Wake Forest, George Cople; 3, Eureka, Samuel Harrod; 4, Edmond, Don Wright; 5, South Dakota Wesleyan, Frank Stark; 6, Emporia, Mont Hilleary; 7, Kentucky Wesleyan, Truman Morris.

Group B. 1, Yankton, Ivan Anderson; 2, Monmouth, John Moffett; 3, Pittsburg, Leo Howard; 4, Trinity, Lloyd Stowers; 5, Battle Creek, Leo Mallison; 6, Puget Sound, John Leik; 7, Coe, John Nichol.

Group C. 1, St. Thomas, Martin Cogley; 2, Sterling, William Pinkerton; 3, Aberdeen, Joseph Robbie; 4, Illinois State Normal, Lawrence Nelson; 5, Central (Iowa), Robert Renaud; 6, Howard Payne, Elton Greenlee; 7, Greeley State, Eugene Kalney.

Group D. 1, Tulsa, Jackson Hays; 2, Concordia, Ralph Fjelstad; 3, Presbyterian, H. M. Wilson; 4, South Dakota State, Max Meyer; 5, Simpson, Glenn Harlan; 6, Bethany, Eugene Nelson; 7, Kearney, Walter Murrish.



Group E. 1, Sioux Falls, T. Van Ausdall; 2, Macalester, Carl Bahmeir; 3, Wheaton, Harold MacKenzie; 4, Flagstaff, Reed Freeman; 5, Fort Hays, John Willcoxon; 6, Mississippi State, R. L. Dabbs.

Group F. 1, Augustana, (South Dakota), Don Larson; 2, William Penn, Robert Rinden; 3, San Marcos, Wilson Nolle; 4, Ripon, Allan Michie; 5, Macomb, Wayne Thompson; 6, Otterbein, Gerald Riley; 7, Ozarks, Homer Brooks.

Group G. 1, Maryville, Paul Hartman; 2, Nebraska Wesleyan, Dean Lane; 3, Madison, Andy White; 4, Akron, Paul Bagwell; 5, Stephen F. Austin, Don Langston; 6, Augustana, (Illinois), Kenneth Walker; 7, Durant, Tom Knott.

Group H. 1, Rollins, Sterling Olmstead; 2, Colorado State, John McCafferty; 3, Cape Girardeau, Gus Margraf; 4, Westminster, William Newman; 5, North Central, Wendell Slabaugh; 6, Ada, Leroy Martin; 7, Southwestern, Robert Youle.

Group I. 1, Hastings, Max Franzen; 2, Michigan State, Elmer Perrin; 3, Hardin-Simmons, Kelley Barnett; 4, DeKalb, George Strawn; 5, Redlands, Weston McIntosh; 6, Washburn, William Townsend; 7, Kalamazoo, Robert Beamier.

Group J. 1, Franklin, James Pease; 2, Illinois Wesleyan, Eugene Balsley; 3, Heidelberg, Jack Matthews; 4, North Carolina State, J. Gaw; 5, Alva, Howard Harpham; 6, Parsons, Scott Jordan; 7, Toledo, George Lynn.

#### ROUND FOUR SEMI-FINALS

Group A. 1, Hardin-Simmons, Kelley Barnett; 2, Presbyterian, H. M. Wilson; 3, Tulsa, Jackson Hays; 4, Edmond, Don Wright; 5, Hastings, Max Franzen; 6, Franklin, James Pease; 7, Yankton, Ivan Anderson.

Group B. 1, Redlands, Weston McIntosh; 2, Augustana, (South Dakota), Don Larson; 3, Illinois Wesleyan, Eugene Balsley; 4, Dakota Wesleyan, Frank Stark; 5, St. Thomas, Martin Cogley; 6, William Penn, Robert Rinden; 7, Wake Forest, George Copple.

Group C. 1, Baylor, Frank Rossen; 2, Sioux Falls, T. Van Ausdall; 3, DeKalb, George Strawn; 4, Rollins, Sterling Olmstead; 5, Concordia, Ralph Fjelstad; 6, Sterling, William Pinkerton; 7, Cape Girardeau, Gus Margraf.



## MEN'S EXTEMPORE SPEAKING

## JUDGES' RANKINGS

Rank	College	Preliminary	Totals	Semi-Finals	Finals	Totals		
1.	Redlands	1 2 1	1 1 1 4 4 4	19	2 2 2 1 1	27	2 4 1 5 1 2 1	43
2.	Baylor	1 3 3	2 3 2 1 1 2	18	1 2 1 1 4	27	1 2 5 6 3 6 2	52
3.	Augustana (South Dakota)	1 3 1	1 2 3 1 4 1	17	1 1 1 3 3	26	4 6 3 4 7 3 3	56
4.	Hardin-Simmons	1 1 1	3 1 7 1 3 7	25	4 1 1 1 2	34	3 3 2 2 5 7 4	60
5.	Tulsa	1 1 1	2 1 2 1 5 1	15	2 7 3 3 3	33	7 5 7 1 2 1 5	61
6.	Presbyterian	3 1 2	1 3 1 5 1 3	20	3 2 2 7 1	35	6 1 6 3 4 5 6	66
7.	Sioux Falls	2 5 1	1 5 2 1 3 1	21	2 3 2 2 2	32	5 7 4 7 4 6 7	72
8.	Rollins	4 3 2	2 2 1 1 1 2	18	3 5 4 4 3	37		
9.	Illinois Wesleyan	1 3 5	2 3 6 2 3 3	28	3 3 4 2 2	42		
10.	DeKalb	2 4 3	2 3 1 3 6 2	26	4 1 3 3 6	43		
11.	Franklin	1 2 1½	5 4 3 1 1 1	19½	6 6 5 4 4	44½		
12.	Edmond	1 4 3	4 3 1 5 3 3	27	1 3 4 5 5	45		
13.	Concordia	2 3 4	1 3 2 2 3 2	22	5 7 6 6 1	47		
13.	St. Thomas	7 4 1	1 1 1 1 2 2	20	6 5 5 5 6	47		
15.	South Dakota Wesleyan	3 2 2	1 1 3 4 4 5	25	7 4 3 4 7	50		
16.	Hastings	3 2 4	3 6 4 2 2 1	27	6 5 5 2 6	51		
17.	Wake Forest	2 4 3	4 3 1 3 2 1	23	5 7 6 7 4	52		
18.	Sterling	6 4 2	3 2 1 2 5 1	26	7 4 7 5 5	54		
19.	William Penn	3 1 4	5 3 5 3 1 2	27	4 6 7 6 5	55		
20.	Yankton	2 2 7	4 2 4 2 1 1	25	7 4 7 6 7	56		
21.	Cape Girardeau	1 2 2	1 1 7 4 5 4	27	6 6 5 7 7	58		
22.	Akron	2 3 2	2 4 3 5 3 5	29				
22.	Colorado State	6 4 3	7 2 2 2 2 1	29				
22.	Flagstaff	3 1 4	3 5 2 4 5 2	29				
22.	Macalester	4 6 3	3 4 3 2 1 3	29				
26.	Otterbein	4 1 1	2 4 4 4 7 5	32				
26.	Stephen F. Austin	2 3 1	4 5 4 3 4 6	32				
26.	Heidelberg	1 1 4	6 5 5 4 4 2	32				
29.	Maryville	7 6 5	7 2 2 2 1 1	33				
29.	Aberdeen	3 5 2	1 4 7 7 1 3	33				
29.	Pittsburg	5 5 4	1 5 2 7 2 2	33				
29.	Ripon	4 2 6	4 2 2 5 5 3	33				
33.	San Marcos	5 2 2	3 5 7 2 2 6	34				
33.	Wheaton	3 6 4	2 4 5 3 2 5	34				
35.	Alva	6 1 3	2 6 1 6 7 4	36				
35.	Macomb	3 1 7	5 1 6 6 3 4	36				
35.	Nebraska Wesleyan	2 4 7	5 6 3 1 5 3	36				
35.	North Carolina State	4 7 2	3 4 4 3 2 7	36				
35.	Simpson	3 3 6	5 2 3 6 4 4	36				
40.	Emporia	5 2 5	5 4 1 6 5 4	37				
40.	Illinois State Normal	6 4 5	2 7 2 4 3 4	37				
42.	Central (Iowa)	4 4 1	7 5 5 3 4 5	38				
42.	Monmouth	6 6 6	7 1 3 1 5 3	38				
42.	Trinity	6 1 3	5 3 7 4 3 6	38				
45.	Battle Creek	5 3 4	3 4 5 5 4 7	40				
46.	Fort Hays	7 6 4	5 2 3 6 4 4	41				
46.	North Central	5 5 7	3 1 5 5 7 3	41				
46.	South Dakota State	3 2 6	4 6 7 4 2 7	41				
49.	Augustana (Illinois)	2 5 5	4 6 6 6 6 2	42				



Rank	College	Preliminary	Totals
49.	Eureka .....	4 5 5	3 6 5 2 6 6 42
49.	Parsons .....	6 3 6	4 2 4 7 5 5 42
52.	Howard Payne .....	6 7 3	4 3 3 5 6 6 43
53.	Washburn .....	5 5 4	7 6 5 5 5 5 47
53.	Westminster .....	4 5 5	6 7 6 3 4 7 47
55.	Bethany .....	4 5 6	7 5 5 3 7 6 48
55.	Greeley State .....	4 6 5	6 1 6 6 7 7 48
55.	Michigan State .....	7 8 8	5 6 4 6 1 3 48
58.	Madison .....	5 4 3	6 7 4 4 2 4 49
58.	Puget Sound .....	5 6 6	6 7 6 3 6 4 49
60.	Southwestern .....	6 5 5½	6 4 6 6 6 5 49½
61.	Toledo .....	7 7 5	4 6 4 5 6 6 50
62.	Ada .....	5 6 5	7 5 7 7 3 6 51
63.	Kearney .....	2 6 7	6 7 6 7 5 6 52
64.	Mississippi State .....	8 7 6	6 7 4 5 6 6 55
65.	Kalamazoo .....	7 7 7	5 5 6 7 7 6 57
66.	Coe .....	7 8 8	6 7 5 6 7 5 59
67.	Kentucky Wesleyan .....	6 7 6	7 7 7 7 7 7 61
68.	Ozarks .....	8 7 7	7 6 7 7 6 7 62
69.	Durant .....	7 7 7	7 7 7 7 7 7 63
70.	Georgetown .....	5 6 2	7 6 6

### FINALS

1. Redlands, Weston McIntosh, "The Good Neighbor Policy of Franklin D. Roosevelt."
2. Baylor, Frank Rossen, "American Imperialism—Past and Present."
3. Augustana, (South Dakota), Don Larson, "Japanese Imperialism a Threat to America."
4. Hardin-Simmons, Kelley Barnett, "Marines or Minister in Pan America."
5. Tulsa, Jackson Hays, "Let's Join the League."
6. Presbyterian College, H. M. Wilson, "More Ships, Less Ships, No Ships."
7. Sioux Falls, T. Van Ausdall, "Economic Neutrality—Illusion or Reality."



# *Women's Extemporaneous Speaking*



The general subject for this contest was, "The American Stage." Sub-topics used were as follows:

Censorship of Plays in America; The Radio as a Medium for Drama; The American Audience as a Factor in the American Theatre; The Relation of the Movies to the American Stage; The American Stage as a Field for a Career; Suggestions for Freeing American Playwriting from Commercial Dictation; Suburban America and the Legitimate Stage; Theatrical Families on the American Stage; English Actors on the American Stage; The Effect of the Little Theatre in America; The Showboat as a Factor in American Drama; Famous Producers or Managers of the 19th Century; Actors on the American Stage; The Place of Dramatics in American Education; The Social Influence of the Movies; The Relation of the Press to the American Stage; The History, Growth and Influence of the New York Theatre Guild; Drama for Children in America; European Theatre and the American; Has the American College Contributed to the American Theatre?; The Stock Company and the American Stage; Significant American Playwrights of the 20th Century; The Influence of the Star System on the American Theatre; Are the Movies Artistically Sound? Noteworthy Present Day Actors on the American Stage; Can We Reduce the Commercial Factor in American Theatres? Are the Movies a Friend or an Enemy of the Legitimate Stage? Should the Theatre Lead or Follow the Public Taste in Plays? The Road—Its Past, Present and Future; Is Present Day Drama in America Representative of American Life? David Belasco's Contribution to the American Theatre. Outstanding College



Miss Marjory Collins, Yankton College, South Dakota Gamma, first in extempore. Competed at Lexington. Winner of the college, state, and provincial extempore contests. Student, actor, musician, and tap dancer.



and University Theatres, and Has America Made any Contribution to the Art of the Theatre?

### ROUND ONE

The numbers indicate the order in which the contestants placed, not that in which they spoke.

Group A. 1, Virginia Abbott, Illinois State Normal University; 2, Margaret Haugseth, Concordia; 3, Janet Brown, Franklin; 4, Maxine Gilmore, Southwestern; 5, Almene Perry, East Texas.

Group B. 1, Ruth Hillis, Simpson; 2, Marjorie Collins, Yankton, and Doris McGuire, Emporia Teachers, tied; 4, Della Mackenzie, Wheaton; 5, Elizabeth Moore, Mary Hardin-Baylor; 6, Betty Test, Rollins.

Group C. 7, Angela Dineen, Aberdeen; 2, Sarah Roland, Louisiana; 3, Lora Bryning, Puget Sound.

Group D. 1, Caroline Chisholm, Baylor; 2, Lillian Fisher, Hastings; 3,



Miss Elaine Pagel, Sioux Falls College, South Dakota Epsilon, second in Extempore. Junior. Speech major. Nineteen. Second in the state contest, 1936; second in provincial, 1935.



Miss Bernice Severson, Augustana College, South Dakota Eta, third in extempore. Junior. English major. Winner of state extemp, 1934. Debated at the national in 1934. Plans for the future: Personnel direction.

Brenda Batchelor, Redlands; 4, Dorothy Schlax, De Paul; 5, Grace Prewitt, William Jewell; 6, Elizabeth Wright, South Dakota State; 7, Ellen Chapin, Battle Creek.

Group E. 1, Elaine Pagel, Sioux Falls; 2, Mary Bunce Jacoby, Warrensburg; 3, Lois Jaxie Short, Oklahoma Baptist; 4, Jeane Beukema, Michigan State; 5, Gwendolyn Dimmitt, Fort Hays.



Group F. 1, Jamie Carol White, Alva; 2, Gladys Simmons, Macalester; 3, Frances Railsback, Linfield; 4, Bernice Severson, Augustana, (South Dakota); 5, Avis Page, Colorado State; 6, Virginia Stewart, Ozarks.

Group G. 1, Hannah Johnston, Nebraska Wesleyan; 2, Cornelia MacGregor, Hamline; 3, Iola Weikland, Western State; 4, Lois Arrie, Oklahoma City; 5, Aileen Hart, Madison; 6, Roberta Howie, Maryville.

## ROUND TWO

Group A. 1, Brenda Batchelor, Redlands; 2, Lois Jaxie Short, Oklahoma Baptist; 3, Ellen Chapin, Battle Creek; 4, Aileen Hart, Madison; 5, Lora Bryning, Puget Sound; 6, Maxine Gilmore, Southwestern; 7, Virginia Stewart, Ozarks.

Group B. 1, Bernice Severson, Augustana, (South Dakota); 2, Doris McGuire, Emporia; 3, Hannah Johnston, Nebraska Wesleyan; 4, Jamie Carol White, Alva; 5, Virginia Abbott, Illinois State Normal; 6, Jeanne Beukema, Michigan State.

Group C. 1, Caroline Chisholm, Baylor; 2, Della Mackenzie, Wheaton; 3, Frances Railsback, Linfield; 4, Margaret Hauseth, Concordia; 5, Laura Kneidl, Sterling; 6, Lois Arrie, Oklahoma City; 7, Lillian Fisher, Hastings.

Group D. 1, Mary Bunce Jacoby, Warrensburg; 2, Marjorie Collins, Yankton; 3, Iola Weikland, Western State; 4, Roberta Howe, Maryville.

Group E. 1, Dorothy Schlax, De Paul; 2, Almena Perry, East Texas; 3, Ruth Hillis, Simpson; 4, Angela Dineen, Aberdeen; 5, Gwendolyn Dimmitt, Fort Hays State.

Group F. 1, Janet Brown, Franklin; 2, Elizabeth Moore, Mary Hardin-Baylor; 3, Gladys Simmons, Macalester; 4, Elizabeth Wright, South Dakota State.

Group G. 1, Cornelia MacGregor, Hamline; 2, Elaine Pagel, Sioux Falls; 3, Grace Prewitt, William Jewell; 4, Avis Page, Colorado State; 5, Betty Test, Rollins; 6, Sarah Roland, Louisiana College.

## ROUND THREE

Group A. 1, Angela Dineen, Aberdeen; 2, Frances Railsback, Linfield; 3, Maxine Gilmore, Southwestern; 4, Della Mackenzie, Wheat-



on; 5, Grace Prewitt, William Jewell; 6, Lois Jaxie Short, Oklahoma Baptist.

Group B. 1, Mary Bunce Jacoby, Warrensburg; 2, Jamie Carol White, Alva; 3, Doris McGuire, Emporia; 4, Roberta Howie, Maryville; 5, Elizabeth Wright, South Dakota State.

Group C. 1, Elaine Pagel, Sioux Falls; 2, Dorothy Schlax, De Paul; 3, Laura Kneidl, Sterling; 4, Lois Arrie, Oklahoma City; 5, Jeanne Beukema, Michigan State; 6, Virginia Stewart, Ozarks.

Group D. 1, Janet Brown, Frankln; 2, Bernice Severson, Augustana, (South Dakota); 3, Caroline Chisholm, Baylor; 4, Hannah Johnston, Nebraska Wesleyan.

Group E. 1, Lillian Fisher, Hastings; 2, Lora Bryning, Puget Sound; 3, Avis Page, Colorado State; 4, Almerna Perry, East Texas; 5, Aileen Hart, Madison; 6, Gwendolyn Dimmitt, Fort Hays State; 7, Betty Test, Rollins.

Group F. 1, Marjorie Collins, Yankton; 2, Gladys Simmons, Macalester; 3, Sarah Roland, Louisiana College; 4, Elizabeth Moore, Mary Hardin-Baylor; 5, Iola Weikland, Western State.

Group G. 1, Brenda Batchelor, Redlands; 2, Cornelia MacGregor, Hamline; 3, Ellen Chapin, Battle Creek; 4, Margaret Haugseth, Concordia; 5, Ruth Hillis, Simpson.

#### ROUND FOUR SEMI-FINALS

Group A. 1, Frances Railsback, Linfield; 2, Lillian Fisher, Hastings; 3, Janet Brown, Franklin; 4, Mary Bunce Jacoby, Warrensburg; 5, Brenda Batchelor, Redlands; 6, Ruth Hillis, Simpson; 7, Angela Dineen, Aberdeen.

Group B. 1, Marjorie Collins, Yankton; 2, Lora Bryning, Puget Sound; 3, Elaine Pagel, Sioux Falls; 4, Virginia Abbott, Illinois State Normal; 5, Doris McGuire, Emporia; 6, Caroline Chisholm, Baylor; 7, Dorothy Schlax, De Paul.

Group C. 1, Gladys Simmons, Macalester; 2, Bernice Severson, Augustana, (South Dakota); 3, Cornelia MacGregor, Hamline; 4, Hannah Johnston, Nebraska Wesleyan; 5, Jamie Carol White, Alva; 6, Margaret Haugseth, Concordia; 7, Iola Weikland, Western State.

#### FINALS

The order in the finals is obtained by taking the totals of all the rankings.

1. Marjorie Collins, Yankton, "The American Stage as a Field for a Career."
2. Elaine Pagel, Sioux Falls College, "David Belasco's Contribution to the American Theatre."

## WOMEN'S EXTEMPORE SPEAKING

## JUDGES' RANKINGS

Rank	College	Preliminary					Totals	Semi-Finals					Finals					Totals							
1.	Yankton .....	2	3	2½	2	1	2	3	2	2	19½	2	1	3	1	5	31½	2	2	4	7	2	1	1	50½
2.	Sioux Falls .....	1	1	1	2	2	3	1	4	1	16	4	3	4	3	2	32	3	3	7	1	1	3	4	54
3.	Franklin .....	3	3	4	1	2	1	1	1	1	17	6	1	2	3	5	34	7	6	1	2	7	2	2	61
3.	Augustana (South Dak.)	4	2	3	1	1	2	4	2	2	21	2	4	5	1	2	35	1	1	5	5	5	4	5	61
5.	Warrensburg .....	2	2	2	1	2	1	2	2	2	14	2	5	3	5	3	32	5	7	2	3	4	5	6	64
6.	Hamline .....	1	4	2½	1	1	2	1	2	2	16½	7	5	4	2	1	35½	6	5	3	6	6	6	3	70½
7.	Macalester .....	1	4	2½	4	1	3	5	3	1	24½	4	3	1	3	3	38½	4	4	6	4	3	7	7	73½
8.	Emporia .....	1	4	2½	4	4	1	4	4	1	25½	1	2	6	2	1	37½								
9.	Linfield .....	2	3	2½	3	4	3	1	2	5	25½	5	3	1	4	1	39½								
10.	Puget Sound .....	4	1	2½	2	6	6	4	1	2	28½	1	2	6	2	1	40½								
11.	Redlands .....	2	2	5	1	2	5	2	1	1	21	7	2	7	2	4	43								
12.	Hastings .....	5	1	1	5	7	5	2	3	1	30	3	4	5	1	2	45								
13.	Nebraska Wesleyan .....	3	1	2	3	2	5	3	4	3	26	1	2	7	6	4	46								
13.	Alva .....	3	1	2	5	3	3	1	1	5	24	5	2	6	4	5	46								
15.	Baylor .....	1	3	2	2	2	1	2	3	4	20	7	7	1	6	7	48								
16.	Simpson .....	4	1	2½	2	3	1	5	5	3	26½	1	6	4	6	6	49½								
17.	Illinois State Normal .....	2	1	1	2	5	4	3	6	6	30	3	4	5	4	4	50								
18.	Concordia .....	1	2	3	7	3	2	3	3	4	28	3	7	2	5	6	51								
19.	De Paul .....	4	7	3	1	2	1½	2	2	2	24½	5	5	7	7	6	54½								
20.	Aberdeen .....	1	3	2	4	4	4	2	3	1	24	4	7	6	7	7	55								
21.	Western State .....	4	3	3½	3	3	4	4	5	1	30½	6	6	3	7	7	59½								
22.	Sterling .....	2	4	3	1	6	7	3	4	1	31														
23.	Mary Hardin-Baylor .....	3	6	4½	2	4	2	2	4	4	31½														
23.	Louisiana College .....	3	2	2½	4	5	6	1	5	3	31½														
25.	East Texas .....	5	4	5	3	1	2	3	6	3	32														
25.	Wheaton .....	6	2	4	4	1	4	6	1	4	32														
27.	Oklahoma Baptist .....	4	3	3	6	1	3	5	4	6	35														
28.	Madison .....	6	2	4	5	5	2	5	2	5	36														
29.	Southwestern .....	4	5	2	4	4	7	3	6	2	37														
30.	William Jewell .....	6	4	4	5	3	4	4	5	3	38														
30.	Colorado State .....	5	5	5	3	4	5	1	4	6	38														
32.	Oklahoma City .....	2	5	3½	6	5	6	5	3	3	38½														
33.	South Dakota State .....	3	6	7	3	3	4	6	3	4	39														
34.	Maryville .....	5	6	5½	4	4	3	5	5	3	40½														
35.	Battle Creek .....	7	5	6	3	3	4	4	4	5	41														
36.	Fort Hays .....	5	4	5	5	5	5	7	5	4	45														
36.	Michigan State .....	3	5	4	6	6	6	4	5	6	45														
38.	Rollins .....	5	5	5	6	6	1	6	7	7	48														
39.	Ozarks .....	6	6	6	7	7	1	6	6	5	50														

3. Janet Brown, Franklin, "Outstanding University and College Theatres," and Bernice Severson, Augustana, (South Dakota), "The Social Influence of the Movies," tied.
5. Mary Jacoby, Warrensburg, "Can We Reduce the Commercial Factor in the American Theatre?"
6. Cornelia MacGregor, Hamline, "The Effects of Commercialism on the American Theatre."
7. Gladys Simmons, Macalester, "Has America made any Contribution to the Art of the Theatre?"



## *Convention Business Meetings*



Minutes of the Business Sessions of the Eleventh National Biennial  
Convention of Pi Kappa Delta held at Houston, Texas,  
March 29-April 3, 1936.



**First Business Session. First Methodist Church of Houston**  
**at 8:15 A. M., Monday, March 30**

The meeting was called to order by National President George McCarty. Mr. Walter Jenkins, Educational Director for the church, led the convention in singing "America the Beautiful" and then sang several songs that were much appreciated. The invocation was given by the Rev. Mr. Goodrich. Colonel Ashburne welcomed the convention on behalf of the Houston Chamber of Commerce; and Colonel Ball, Regent of the Sam Houston State Teachers College, spoke for the host college and told something of the history of his college and the state of Texas. Governor Frank E. McAnear, of the Province of the Lower Mississippi, welcomed the convention for his province. After some general announcements by a number of the national officers the session adjourned to take up the first rounds of the debate tournaments.

**Second Buisness Session. Ball Room of the Rice Hotel.**  
**9:15 A. M., Tuesday, March 31**

The meeting was called to order by President McCarty. Roll call. After announcements by various committee chairmen, and Earl Huffor, local convention officer, the report of the National Secretary-Treasurer, G. W. Finley, was read, accepted, and placed on file.

### **REPORT OF THE NATIONAL SECRETARY-TREASURER**

To the Eleventh Biennial Convention of Pi Kappa Delta,  
Houston, Texas, March 29-April 3, 1936

The most important item in this report is, naturally, the financial statement. Therefore it shall come first, before the delegates here assembled have had time to settle down for the usual nap. I shall

give here merely a summary of receipts, expenditures, and amounts on hand. Detailed statements were published in The FORENSIC for October, 1934 and 1935. Such a statement for the current year will appear in the magazine for October, 1936. It is hoped, though not expected, that local chapter officers will check over these reports critically and report to the National Treasurer any discrepancies they may find between the published report and the records of chapter treasurer. A premium is hereby offered to any local chapter that will point out errors in the published treasurer's report.

On hand July 1, 1933 .....	\$ 5,230.87
Receipts during the year .....	8,465.60
<hr/>	
Total for 1933-34 .....	13,696.47
Expenditures during the year .....	6,788.89
<hr/>	
Amount on hand July 1, 1934 .....	6,907.58
Receipts during 1934-35 .....	6,406.80
<hr/>	
Total .....	13,314.38
Expenditures during the year .....	6,647.87
<hr/>	
Balance on hand July 1, 1935 .....	6,666.51

The above figures do not mean that we have a reserve fund of over \$6,500.00 This figure is the amount on hand July 1, at the time of year when there is the most money in the treasury. By the following March the amount is cut down to about \$3,000, since most of our receipts come in during the months from March to July. We can safely say then that we are now carrying a reserve fund of about \$3,000, a sum which should be built up to a much higher figure.

A glance over these figures and those for the years just preceding will show that for Pi Kappa Delta the bottom of the great depression, financially, came in 1932-33. During that year we ran behind nearly \$1,000, in spite of the fact that expenditures were cut to the very bone. This slump brought our July balance down to the neighborhood of \$5,000. During 1933-34 it jumped back up to about \$6,900 and at the end of our last fiscal year it stood at \$6,600, in round numbers.

You may be surprised to note that our balance is highest at the end of our national convention years. Of course during such years our expenditures are heavier than in off-convention years, but receipts are also greater and that accounts for this situation.



Two years ago we entered our national convention with 138 active chapters. Fourteen new charters were voted and two were cancelled, leaving the total at 150 active chapters. Every one of the fourteen new colleges added to our chapter roll in 1934 has turned out, so far, to be an excellent selection. All were properly installed either in the spring of 1934 or early the next fall and all have been active and wide-awake during the past two years. What these youngsters will do to the older members of our family in this convention still remains to be seen.

Two years ago in my report to the 1934 convention at Lexington, I stated that we had present representatives from 119 of our chapters. Today our records show 122 chapters represented. The total attendance at Lexington was right at 700. Our attendance here at Houston is not far from 675.

As seen from the national secretary's desk there are several things that Pi Kappa Delta needs to adopt as general policy.

1. We need to take a definite stand in favor of the extensive rather than the intensive program of forensics in all our colleges. The benefits of intercollegiate participation in forensics should be extended to as many students as possible, not concentrated upon a very few. We have in some of our chapters students who have engaged in as many as 50 different debates, while in that same college 90% of the students never get into a single one. Will anyone tell me what a student gets out of his fiftieth debate that he has not already obtained from his other 49? Such concentration is entirely unjustifiable and may well bring our whole program into disrepute.

If I am right in what I have just said, we should not "boost" our requirements for the higher degrees in our order. We already require six debates for Proficiency, twelve for Honor, and eighteen for Special Distinction. To boost these requirements even higher as we started to do in our last convention would be to encourage concentration rather than the spreading of the benefits of forensics.

2. We need to decrease the emphasis we have formerly placed upon "winning". We all agree that "participation" not "winning" is the important thing in debate. Yet we continue to laud the winner to the skies. My point is that the winner deserves his reward, but that at the same time we should be careful not to overdo the matter. In this connection I recommend definitely that we change the method of determining the rankings of our chapters in the National Convention Contest Achievement Lists. Instead of giving points to winners only, we should count two points for participation in any contest and an additional one point for a win or for placing in the upper half of that contest.

3. All our chapters should be encouraged to follow the plan adopted by our founders some twenty-three years ago and make Pi Kappa Delta a "working" rather than a "key-awarding" organization. To do this members should be taken into the group when they have met minimum requirements and then encouraged to work their way up to the higher degrees. All chapters should place more emphasis upon the attainment of these higher degrees. Keep a careful chapter roll each year in which each member has his degree recorded after his name. Elect your officers from those holding the higher degrees.

And now may I deliver my biennial sermonette from the national Secretary-Treasurer to the local chapter officers? I know you do not take it very seriously, but its delivery is a wonderful relief to me.

To all local chapter officers, including coaches and sponsors:

1. Answer promptly correspondence from national officers when such answers are called for.

2. Make every effort to get all eligible students into your organization, even if they do have financial difficulties. No chapter can hope to succeed if it has a lot of eligible students on the campus who do not belong to the order.

3. Get as many as possible of your members to purchase keys, or better still, make the key the award for successful forensic participation.

4. Make the annual initiation ceremony of Pi Kappa Delta one of the biggest events of the year on your campus. The plan of holding joint initiation ceremonies with nearby chapters is one of the best ways of making the event really significant.

5. Get your new memberships to the national headquarters as early as possible. Don't let them drag along until near or even after commencement time.

6. Get all orders for keys to the national office not later than **May 1**, if that is at all possible. Keys ordered later than that will probably not get back to you by commencement time, and delivering keys to students after college closes is both unsatisfactory and difficult.

Finally may I express my very real appreciation to the coaches and officers of the local chapters for their fine cooperation, in the main, during the past two years. It has been a real joy to work with you. May you receive the rewards of the faithful.

Respectfully submitted,

G. W. FINLEY, National Secretary-Treasurer.



The president appointed the following nominating committee: R. E. Untereiner, California Institute of Technology; J. R. Start, Fort Hays State College; T. A. Houston, Southeastern State Teachers College, Oklahoma; Willard Wilson, Nebraska Wesleyan; J. D. Coon, Sioux Falls, South Dakota. The following resolutions committee was appointed: O. P. McElmeel, College of St. Thomas; Dr. J. Thompson Baker, Southwestern College, Kansas; O. J. Drake, Michigan State; Upton Palmer, Sioux Falls College.

Adjournment.

### **Third Business Session. Ball Room of the Rice Hotel**

**9:30 A. M., April 1**

Meeting called to order by President McCarty. To expedite the work of the nominating committee, the committee on constitutional revision recommended that the new constitution provide for five vice-presidents; that the office of historian be dropped, and that of Immediate-Past-President be added, this latter officer to be a regular voting member of the Council. The recommendation was adopted.

The report of the charter committee was next taken up. S. R. Toussaint, chairman, stated that the committee had received petitions from eighteen different colleges during the interim. It recommended that charters be granted to the following:

Winthrop College, Rock Hill, South Carolina.

Luther College, Decorah, Iowa.

Arizona State Teachers College, Tempe.

Wisconsin State Teachers College, River Falls.

And that a charter be granted to Louisiana State Normal College, Natchitoches, next fall if the college is restored to full standing in the Southern Association at the November meeting. If not, the petition is to be considered rejected by this convention.

The committee's report was accepted. Other members of the charter committee were: Charles Templar, Hamline; Verton M. Queener, Maryville, Tennessee; R. D. Mahaffey, Linfield.

R. E. Untereiner reported the following officers as nominated by the committee: President, S. R. Toussaint; First Vice-President, W. V. O'Connell; Second Vice-President, W. Prewitt Ewing; Third Vice-President, Forrest H. Rose; Fourth Vice-President, George V. Bohman; Fifth Vice-President, Earl Huffor; Secretary-Treasurer, G. W. Finley; Student Representatives, Janet Brown, Franklin; and Billy Greene, Durant Teachers. Moved that the secretary cast

the unanimous ballot of the convention for these officers. Carried.  
Adjournment.

**Fourth Business Session. Ball Room Rice Hotel**

**9:30 A. M., Thursday, April 2**

Meeting called to order by President McCarty. Roll Call. The FORENSIC committee made the following report:

We, your FORENSIC committee, offer the following suggestions for the magazine:

First, that the policy of printing locals be continued;

Second, that more student pictures—not coaches—be printed and that pictures of students be sent to the editor;

Third, that each chapter report speech activities, and chapter activities for each issue;

Fourth, that the use of quotations on cover be continued;

Fifth, that each chapter place the Editor of the FORENSIC on the mailing list for the college paper; and,

Sixth, that the FORENSIC be kept an inspirational student magazine and free from the tinge of professionalism.

FRANK E. McANEAR, Chairman.

The report of the Inter-Chapter Relations Committee was submitted by George Bohman, and follows:

**REPORT OF THE INTER-CHAPTER RELATIONS COMMITTEE**

To the Eleventh Biennial National Convention of Pi Kappa Delta,  
April 2, 1936.

By action of the Council and direction of the National President, the Inter-Chapter Relations Committee is charged with the following duties:

**1. Supervision of the Provinces**

**a. Compilation of the reports of the Provincial Conventions.**

These reports were obtained upon blank forms prepared several years ago, by an earlier committee. In 1935, all but one province responded satisfactorily to the request for this full statement of the provincial convention program, and contests results. These results were arranged in suitable form for publication, and sent to the editor of the FORENSIC (May, 1935).