

THE

47-4

Forensic

ΠΕΙΘΩ ΚΑΛΗ ΔΙΚΑΙΑ

OTTAWA UNIVERSITY LIBRARY



NUMBER 98 AND GOVERNORS

MAY 1962

The FORENSIC

OF PI KAPPA DELTA

SERIES 47 MAY, 1962 No. 4

Contents

Pi Kappa Deltans Become College Presidents	3
The President's Page	6
News in Brief	7
The Province Conventions	8
The Secretary's Page	20
Chapter Notes	21
Alumni Notes	26
Pi Kappa Delta School Wins National Contest	28
New Members of Pi Kappa Delta	29

EDITOR JOHN RANDOLPH

ASSOCIATE EDITORS:

ALUMNI NEWS Frank T. Alusow

STUDENT CONTRIBUTIONS L. A. Lawrence

BUSINESS MANAGER D. J. Nabors

Published four times a year in October, January, March, and May. Office of publication: Westminster College, Fulton, Missouri. Second-class postage paid at Fulton, Missouri.

DIRECTORY OF PI KAPPA DELTA

NATIONAL PRESIDENT—Raymond Yeager, Bowling Green State University, Bowling Green, Ohio

NATIONAL VICE-PRESIDENT—Roy Murphy, Southwest Louisiana Institute, Lafayette, Louisiana

NATIONAL SECRETARY-TREASURE—D. J. Nabors, East Central State College, Ada, Oklahoma

NATIONAL COUNCIL MEMBERS—Georgia Bowman, William Jewell College, Liberty, Missouri; Theodore O. H. Karl, Pacific Lutheran College, Tacoma, Washington; Harold C. Larson, Carroll College, Waukesha, Wisconsin

IMMEDIATE PAST PRESIDENT—Harvey Cromwell, Mississippi State College for Women, Columbus, Mississippi

EDITOR OF *The Forensic*—John Randolph, Westminster College, Fulton, Missouri

ASSOCIATE EDITORS OF *The Forensic*—Frank T. Alusow, University of Akron, Akron, Ohio; L. A. Lawrence, Montana State College, Bozeman, Montana

THE PROVINCES AND GOVERNORS

1. PROVINCE OF THE PLAINS

Kansas, Nebraska, Colorado. Ted Johnson, Western State College, Gunnison, Colorado

2. PROVINCE OF THE MISSOURI

Missouri, Iowa-Central, Simpson, Coe, Drake, Calvin Stoney, Westminster College, Fulton, Missouri

3. PROVINCE OF ILLINOIS

Illinois, Wisconsin-Ripon, Carroll, Whitewater State, Harold Larson, Carroll College, Waukesha, Wisconsin

4. PROVINCE OF THE PACIFIC

Arizona, California. Jack Howe, University of Arizona, Tucson, Arizona

5. PROVINCE OF THE SIOUX

Iowa-Morningside, Westmar, Buena Vista, North Dakota, South Dakota. Howard H. Wells, South Dakota School of Mines and Technology, Rapid City, South Dakota

6. PROVINCE OF THE LOWER MISSISSIPPI

Arkansas, Louisiana, Oklahoma, Texas. Glenn Capp, Baylor University, Waco, Texas

7. PROVINCE OF THE LAKES

Maine, Michigan, Indiana, Ohio, Pennsylvania, West Virginia. James Grissinger, Otterbein College, Westerville, Ohio

8. PROVINCE OF THE UPPER MISSISSIPPI

Iowa-Luther, Upper Iowa, Dubuque, Minnesota, Wisconsin-Eau Claire State, River Falls State, Oshkosh State. Kenneth Wilkins, St. Olaf College, Northfield, Minnesota

9. PROVINCE OF THE SOUTHEAST

Alabama, Florida, Georgia, Kentucky, Mississippi, North Carolina, South Carolina, Tennessee, Arda Walker, Maryville College, Maryville, Tennessee

10. PROVINCE OF THE NORTHWEST

Idaho, Montana, Oregon, Washington. N. W. Corbin, Idaho State College, Pocatello, Idaho

Pi Kappa Deltans Become College Presidents

**AT WHITEWATER STATE COLLEGE:
WALKER D. WYMAN SUCCEEDS
ROBERT C. WILLIAMS**

The post as president at Whitewater (Wisconsin) State College is not really reserved for Pi Kappa Deltans.

It just appears that way, as Dr. Robert C. Williams, retiring from the presidency after 16 years, relinquishes the office to Dr. Walker D. Wyman, who will become the college's ninth president on July 1.

Both men were active in debate as college undergraduates, both have been debate coaches and both were instrumental in organizing college chapters of Pi Kappa Delta.

While his reputation as a historian has overshadowed his activities in speech, Dr. Wyman, now chairman of the department of social science at River Falls (Wisconsin) State College, has had a lifelong interest in forensics.

As an undergraduate at Illinois State Normal University, he was president of the local chapters of Pi Kappa Delta and of Theta Alpha Phi.

Active in both speech and dramatics, he represented the college in intercollegiate debating, extemporaneous speaking and oratory, accumulating a collection of ribbons and citations in the "Little Nineteen Conference."

During three years of this period one of his debate partners was Dr. Maurice O. Graff, now Dean of the College at La Crosse (Wisconsin) State College, and another was Dr. Harry Dean, now at Florida Southern University.

Dr. Wyman received his bachelor of education degree from Illinois State Normal in 1929 and an M.A. in history in 1931 from the State University of Iowa, where he completed his doctoral work in 1935. After a brief period as a high school social science teacher at Dwight, Ill., he joined the faculty at River Falls in 1932.

One of his first assignments there was that of debate coach, a position he held for the next 14 years.



Walker D. Wyman

In 1936 he inaugurated the River Falls chapter of Pi Kappa Delta.

The first person in the Wisconsin State College system to institute international debates, he brought an Oxford University team to River Falls in 1936, and the Oxford-River Falls debate was a tradition for a number of years.

Discussing the place of forensics at the college level, Dr. Wyman said he "believes that speech activities have much to contribute to the collegiate education of young people."

"Such experiences as those provided by dramatics and speech contribute to the poise and self-confidence of the student, sharpen bibliographical techniques and strengthen the ability to organize and express ideas."

And extending his views to include his new post at Whitewater, he added, "I would hope that Whitewater students would take advantage of the opportunities provided not only by the speech and drama departments, but also by classroom experiences and campus organizations, to develop the arts of oral communication."

"Of course, this amounts to nought unless a student also learns to read and write, and increases his sensitivity to the world in which he lives."

Obviously a product of those beliefs, Dr. Wyman is himself a prolific writer and is not only the author of several volumes on frontier history including *The Wild Horses of the West*, *California Emigrant Letters*, *Nothing But Prairie and Sky* but also the co-editor of *The Frontier in Perspective*. He has contributed some 25 articles and 200 book reviews to professional periodicals and has written for *Encyclopaedia Britannica*.

Active in national and educational organizations, Dr. Wyman is a member of the American Historical Association's Committee for the Teaching of History in the Schools, and serves on the board of the Association's Service Center for Teachers. He has been president of the Wisconsin Historical Society and a member of its Board of Curators.

In recent years he has been a visiting professor of history at the Universities of Wisconsin, Minnesota and Maine.

Several years ago Dr. Wyman was selected as one of the "three most distinguished alumni of Illinois State Normal University."

His wife, Helen, is an art teacher and illustrated *California Emigrant Letters*, one of her husband's books. The couple has two sons, Bryant, a captain with the Army medical corps stationed in Karlsruhe, Germany, and Mark, a reporter for the *Minneapolis Tribune*.

Dr. Williams, who was an honored guest at the Pi Kappa Delta Province of Illinois-Province of Missouri tournament banquet on the Whitewater campus late in April, has been interested in debate as long as he has been eligible to participate, beginning as a high school student. He was a member of the debate team for three years at Central College, Pella, Iowa, where he helped to organize the Iowa Beta Chapter of Pi Kappa Delta. As a teacher and superintendent of schools in Iowa he served as a debate coach and regularly judged high school de-

bates, and in 1948, as president of Whitewater State College, he again started to build a forensic program.

Because of Dr. Williams' belief in the educational values of a forensic program, emphasis at Whitewater has been placed on those values, rather than on winning. All students who wish to participate in debate are accepted as long as they contribute to the work of the squad, and all are given an opportunity to participate in some debates. The goal of the program is to build a number of competent debaters rather than one or two excellent teams.

Dr. Williams would doubtless agree with Dr. Wyman's summary, that "An ideal college dedicated to learning and an ideal student body dedicated to the pursuit of knowledge might find a public affairs forum the 'red meat' to make college life exciting. Here they might discuss and debate the great issues of the day. Speech activities can give a new dimension to the purposes for which colleges exist."

AT OKLAHOMA BAPTIST UNIVERSITY: JAMES R. SCALES IS NOW NINTH PRESIDENT

Dr. Scales was installed as O.B.U.'s ninth president on December 10, 1961, and says of his new task, "I found the school good and only hope to make it better."

Dr. Scales succeeded Dr. John W. Raley as president on June 1, 1961. Dr. Raley, who became president in 1934 when O.B.U.'s fortunes were at their lowest ebb, was elevated to the office of chancellor.

Not many Baptists had to ask, "What kind of a man is the new president?" Scales' long association with O.B.U., his standing as a popular professor, scholar and civic leader answered it for them.

The 42-year-old president has been associated with O.B.U. since he entered the school in 1935 as a freshman. His stay has been interrupted only by graduate work at the University of Oklahoma, University of Chicago, the University of London, and a 3-year stint as a signal officer in the Navy during World War II.

Editor's note: The above article on President Scales is reprinted from *Sooner News-Makers*, February, 1962. It should be added that Dr. Scales debated at O.B.U. and later coached there. It is expected that under his leadership, O.B.U. will again become one of Pi Kappa Delta's strongest chapters.

Scales joined the O.B.U. faculty in 1940, and returned as an associate professor from his wartime duties. He was made vice president in 1950 and continued his teaching duties as professor of history and government. In 1953 he was named executive vice president and president in 1961.

He graduated valedictorian of his Miami High School class, and magna cum laude from O.B.U. in 1939. He was elected to Phi Beta Kappa at the University of Oklahoma and was twice selected as Walgreen Scholar at the University of Chicago. His advanced studies have been in the fields of history and government, while undergraduate majors were French and English.

His professional and honorary memberships include American Historical Association of University Professors, Phi Eta Sigma scholastic fraternity, Pi Kappa Delta forensic fraternity, Kappa Delta Pi education fraternity, National Education Association, President's Committee on Education Beyond the High School (1957), Oklahoma Commission on Teacher Education and Certification (1955-61) and the American Guild of Organists.

He is a deacon in the First Baptist Church of Shawnee; a member, past president and director of the Shawnee Lions Club; member and director of the Shawnee Chamber of Commerce; past president of the Shawnee Community Concert Association; director of the Pottawatomie County Chapter of the American Red Cross; past member of the Committee on Oklahoma Constitutional revision, and a trustee of the Wesley Hospital Foundation in Oklahoma City.

Another qualification important in a university president is a sense of humor. This is possessed in abundance by Scales. His favorite jokes are on himself. He enjoys remembering the time a fellow faculty member held a mock-serious one-man-art show for him displaying his best "paint-by-number" artistic efforts.

Students are used to seeing their new president pedal serenely by on his bicycle on an outing with his two daughters or in a race with a faculty member. Faculty members are used to his penetrating, but sometimes cryptic notes analyzing any and all phases of the university.

Betty Ann Randel, '41ma, a classmate who became Mrs. James Ralph Scales in 1944, has her own credentials. She too is an O.B.U. graduate, and was one of the

few women serving as full-time college teachers in government. She has taught the same Sunday School class at the First Baptist Church in Shawnee for 15 years.

Dr. Scales's avocations are often devoted to things academic. The past year found him studying the Russian language.

Students on the Shawnee campus are aware of the new president's avid interest in scholarship. One came through the central offices waving the list of unsatisfactory grades. "Now I know what Dr. Scales meant by 'a rigorous intellectual experience,'" he commented. "This list is 14 pages long."

The search for truth and wisdom, the answering of the great questions of life are basic in Scales's concept of higher learning.

"To send your boy to college," he said, "just to confirm your own wisdom on every subject is a terrible waste of time and money and talent. The boy will change.

"It is our aim to help that boy as he pushes back the frontiers of the last generation. We intend to help by seeing that he is surrounded by understanding in those cruel years of doubt, confusion and kaleidoscopic change. We want to provide a rigorous intellectual experience, teaching him to attack ideas; to read, rather than run from books; to learn to be creative.

"We intend to help the boy strengthen and deepen his religious convictions. Not long before his death this year the psychiatrist Carl Jung said 'only in the second half of our lives do most of us come to grips with the hitherto neglected demands of our being; to engage in religious search for meaning.' Why should there be such waste? Why must we wait until youth has fled to explore the great issues of life?

"Finally, we should hope that the boy will emerge from O.B.U. with a Christian world view. Where else but in college would he attack such issues as the nature of the universe, the nature of God, the destiny of man, the best kind of society for the happiness of man, the wisest kind of economic organization for individual liberty, the ways to attain the dignity of the human personality, and the best techniques and outlets for serving mankind?"

Silence is deep as eternity; speech is shallow as time.
—Carlyle



Raymond Yeager

The President's Page

In my files is an 1821 reference on public speaking by a British minister, Dr. Adam Clarke. His strictures were intended for new Methodist ministers. You may find some of them applicable to speakers anywhere; others, to say the least, are quaint or outmoded.

Compare these early instructions on public speaking to the training and experience you have received during your career.

When in the pulpit, be always solemn; say nothing to make your congregation laugh. Remember you are speaking for eternity.

Never assume an air of importance while in the pulpit; you stand in an awful place, and God hates the proud man.

Avoid all quaint and fantastic attitudes, queer nodding, ridiculous stooping, skipping from side to side of the desk, knitting of brows, and every other theatrical or foppish air which tends to disgrace the pulpit.

Never shake or flourish your handkerchief; this is abominable; nor stuff it into your bosom; this is unseemly. Do not gaze about on your congregation before you begin your work.

Seldom quote poetry in your sermons: if you avail yourself of the sentiment of the poet, give it plain prose. To say the least of this custom, it certainly is not agreeable to the rules of congruity to interlard prose discourses with scraps of verse.

Read your text distinctly and begin to speak about the middle of your voice, not only that you may be readily heard but that you may rise and fall as occasion may require.

Never drop your voice at the end of a sentence. This is barbarous and intolerable. In a multitude of cases where the last word is not heard the whole sentence is lost.

Be sure to have the matter of your text well arranged in your mind before you come into the pulpit, that you may not be confused while speaking.

In whatever way you handle your text, take care when you have exhausted the matter of it not to go over it again. When you have done, learn to make an end. The evil is doubled when a man brings forth little and is long about it.

You must set it down as an incontrovertible truth that none of your hearers will be more affected with your discourse than yourself. A dull, dead preacher makes a dull, dead congregation.

While we may laugh at many of these "advices," some of them hold true yet today. I'm certain that your classroom instruction and your tournament experiences have helped you develop your skills as a speaker. Your membership in Pi Kappa Delta recognizes that skill. We all trust that you have learned to persuade not only beautifully but just.

To you graduating seniors, farewell and good luck! To you others, we will see you again next Fall.

News in Brief

EDITORIAL CHANGE

THE FORENSIC announces with real regret that, because of the pressure of other duties, Professor John M. Burt feels it necessary to resign as Associate Editor of this magazine. Professor Burt has been an associate editor for the past three years and deserves a "well done" for his efforts on behalf of the fraternity. For the time being, chapter notes may be sent directly to the Editor or one of the Associate Editors.

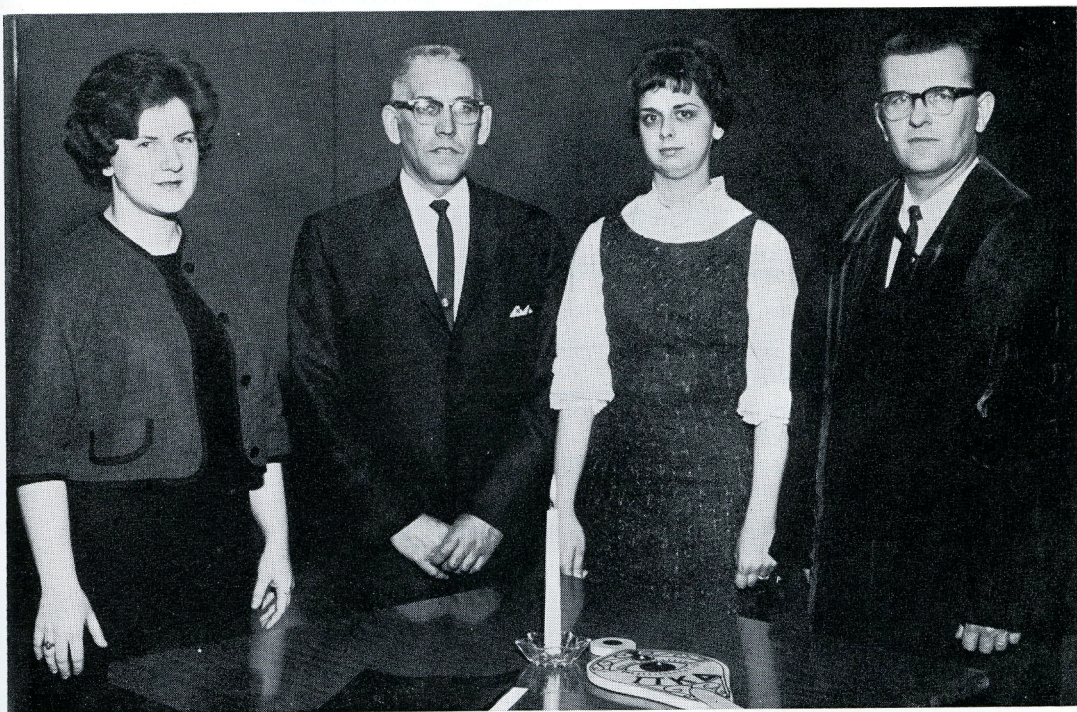
MEMBERSHIP RUSH

From Secretary-Treasurer D. J. Nabors comes the word that the Provincials have brought the usual rush of memberships. "We have reached 400—not half as many as we will probably have before the year is out. We may not reach 1,000 this year as

we usually drop some in the off year, but we should reach 900. There is more interest than usual on the part of prospective chapters for an off-convention year which indicates a strong interest in forensics around the nation."

IN MEMORIAM: EVAN A. REIFF

Also from Professor Nabors comes word of the death of Dr. Evan A. Reiff, President of Hardin Simmons University. Dr. Reiff debated at Oklahoma Baptist University, and later on he was coach of forensics at Ottawa University. Before going to Hardin Simmons, he served as president at Sioux Falls College. Dr. Reiff was a strong booster for Pi Kappa Delta and a personal friend of many of its members. His passing will be mourned by all who knew him.



NEW CHARTER PRESENTED: Olivet Nazarene College (Illinois) received its charter for the Omega Chapter of Pi Kappa Delta at the Missouri-Illinois bi-province tournament held at Wisconsin State College—Whitewater, April 16-17. The new charter was presented by Prof. Harold C. Larson, member of the National Council and Governor of the Illinois province. Shown above, left to right, are: Jo Anne Palmer, Professor Athel McCombs, Joyce K. Keylor, and Governor Harold Larson.

Pi Kappa Delta welcomes Professor "Mac" McCombs and the other members of the new chapter into the fraternity.

The Province Conventions

THE PROVINCE OF THE PLAINS

The Province of the Plains held its tournament and Convention on the campus of Kansas State College of Pittsburg, March 29, 30, and 31. Vice-Governor H. Francis Short of Kansas State College was tournament director. During a business meeting the following officers were elected:

Governor: H. Francis Short, Kansas State College of Pittsburg, Kansas.

Vice-Governor: Don Wolforth, Midland College, Fremont, Nebraska.

Secretary-Treasurer: Don Faules, Colorado State College, Greeley.

The results of contests in Men's and Women's Debate, Extemporaneous Speaking, Oratory, Discussion are as follows:

MEN'S DIVISION

<i>Event</i>	<i>Rating</i>	<i>Student</i>	<i>School</i>
<i>Discussion</i>	Superior	Fred Coldren	Ottawa University
		Harold Lawson	Kansas State Teachers College, Emporia
	Excellent	David Dolsen	Southwestern
		David Baird	Midland College
		Paul Page	Kansas State College of Pittsburg
		Doug Noffsinger	Colorado State College
<i>Oratory</i>	Good	Bate Hamilton	Washburn University
		Dick White	Nebraska Wesleyan
	Superior	Conway Gandy	Colorado State University
		Jerry Klieiver	Tabor College
<i>Extemp</i>	Excellent	Jack Routh	Nebraska State, Kearney
		Paul Harper	Kansas State College of Pittsburg
	Good	Bob Heath	Western State, Gunnison
		Winton Hinkle	Kansas State Teachers College, Emporia
<i>Debate</i>	Superior	Merwin Mitchell	Southwestern
		Harold Lawson	Kansas State Teachers College, Emporia
	Excellent	Dick Nelsen	Midland College
		Dick Rogers	Colorado State, Greeley
	Good	Jim Riley	Washburn University
		Fred Coldren	Ottawa University
	Superior	Paul Harper	Kansas State College of Pittsburg
		Lowell Sharp	Midland College
	Excellent	Bill Nelsen	Midland College
		Karen Myers	Colorado State College
	Good	Mike Gibson	Washburn University
		Dick Rogers	Washburn University
		Paul Thomas	Washburn University
		Jim Riley	Washburn University
		Ralph Murlow	Washburn University
		Bate Hamilton	Washburn University
		Winton Hinkle	Kansas State Teachers College, Emporia
		Jim Roth	Kansas State Teachers College, Emporia
		Roger Morris	Wayne State
		Tim Cohill	Wayne State
	Good	Mike Cornett	Ottawa University
		Jeff Cunningham	Ottawa University
		Jerry Kenton	Nebraska State, Kearney
		Jack Routh	Nebraska State, Kearney

<i>Event</i>	<i>Rating</i>	<i>Student</i>	<i>School</i>
		Bill Hill Jim Patterson	Southwestern
<i>Sweepstakes</i>	Superior		Kansas State Teachers College, Emporia (1st place) Kansas State College of Pittsburg (2nd place) Midland College (2nd place)
	Excellent		Ottawa University Washburn University Colorado State College Southwestern College
	Good		Colorado State University Nebraska Wesleyan University Wayne State College

WOMEN'S DIVISION

<i>Event</i>	<i>Rating</i>	<i>Student</i>	<i>School</i>
<i>Discussion</i>	Superior	Susan Pratt	Kansas State College
	Excellent	Carolyn Webber Anita Edwards	Colorado State College Kansas State Teachers College, Emporia
<i>Oratory</i>	Superior	Karen Spicer	Kansas State College of Pittsburg
	Excellent	Elaine Lamphear	Wayne State College
	Good	Karen Hastings	Washburn University
<i>Extemp</i>	Superior	Karen Myers Janet Wedel	Midland College Kansas State Teachers College, Emporia
	Excellent	Sharon Grotheer Joné Burris	Kansas State College of Pittsburg Ft. Hays State College
	Good	Judy Philleo Barbara Russell	Wayne State Southwestern College
<i>Debate</i>	Superior	Sharon Smith Janet Wedel	Kansas State Teachers College, Emporia
	Excellent	Marcia Rowe Karen Spicer	Kansas State College of Pittsburg
		Karen Dickey Gwynne Douglass	Colorado State College
		Carol Kounovsky Mariya Futchs	Midland College
	Good	Barbara Russell Carol Prather	Southwestern
		Joné Burris Jane Weinhold	Ft. Hays State College
		Pat Hamik Alice Mackey	Nebraska State, Kearney
		Elaine Lamphear Judy Philleo	Wayne State
<i>Sweepstakes</i>	Superior		Kansas State College of Pittsburg (1st place)
<i>Sweepstakes</i>	Superior		Kansas State Teachers College, Emporia
	Excellent		Colorado State College Wayne State College Midland College
	Good		Southwestern College Ft. Hays State College

THE PROVINCE OF THE MISSOURI AND THE PROVINCE OF ILLINOIS: JOINT CONVENTION

Highlighting the Missouri-Illinois bi-province tournament at Wisconsin State College—Whitewater, April 15-17, was the candlelight ceremony that initiated 65 new Pi Kappa Delta members.

Dr. Larry Norton, past national president, was in charge of the initiation. The initiating team consisted of three other past national presidents, Dr. John Randolph, Prof. Sherod Collins, and Prof. Martin Holcomb. Active members of the chapters present formed the two sides of the triangle

opposite the new initiates in an impressive ceremony.

Thirty schools were represented at the joint province Pi Kappa Delta tournament.

On Monday evening the main banquet was addressed by Pres. Robert Williams of Wisconsin State College—Whitewater—who is a charter member of the Central Iowa chapter of Pi Kappa Delta. He holds membership card No. 98.

The new officers elected for the Province of the Missouri were Calvin Stoney, Westminster College, Fulton, Missouri, Governor; and Carl Engdahl, Coe College, Cedar Rapids, Iowa, Secretary-Treasurer.

The results in the various contests are as follows:

WOMEN'S SWEEPSTAKES

Superior:

Illinois Normal University
University of Illinois, Chicago

Excellent:

Bradley University
Carroll College
Illinois Wesleyan University
Northern Illinois University
Southeast Missouri State
Southern Illinois University

Good:

Augustana College
Culver-Stockton
Wisconsin State College, Whitewater
William Jewell

MEN'S SWEEPSTAKES

Superior:

Bradley University

Carthage College
Carroll College
Ripon College

Excellent:

Illinois Normal University
Millikin University
Southeast Missouri State
University of Illinois, Chicago
William Jewell

Good:

Augustana College
Central (Iowa)
Central Methodist University
Monmouth College
Northern Illinois University
Southern Illinois University
Wheaton

WOMEN'S DEBATE

Superior:

Augustana College
Southeast Missouri State

University of Illinois, Chicago
William Jewell

Excellent:

Illinois Normal University
Southern Illinois University

Good:

Bradley University
Carroll College
Culver-Stockton
Northern Illinois University

MEN'S DEBATE

Superior:

Augustana College
Bradley University
Carroll College
Ripon College
Southeast Missouri State
University of Illinois, Chicago
William Jewell

Excellent:

Central (Iowa)

TOP SPEAKERS AT THE MISSOURI-ILLINOIS MEET: Superior winners in all contests held at the joint Convention held at Whitewater, Wisconsin, April 15-17, are shown here. Front row, left to right: John Newhard, Ripon; Howard Gordon, U.I.C.; Ron Marich, U.I.C.; A. J. Wilson, William Jewell; James Bunce, Bradley; Ron Bowen, S.E.Mo.St.; Ron Hahs, S.E.Mo.St.; Bob Doolittle, S.E.Mo.St.; Fred Bess, Carthage; Jim Dienhart, Ripon.

Second row, left to right: Maila Brewer, William Jewell; Sue Edwards, U.I.C.; Sue Wartell, U.I.C.; Linda Ehram, William Jewell; Karen Jahnke, U.I.C.; Doug Ducate, Bradley; Ray Gordon, William Jewell; Gary Maples, Carroll; Don Dahlin, Carroll; Rich Everett, North Central; Gary Gisselman, Carthage; Duffy Farrand, Ripon; Vern Cronen, Ripon; Charles Roth, Bradley; Sally Webb, S.E.Mo.St.; Colleen Roach, W.S.C., Whitewater; Susan Gibson, Monmouth; Cora Sue Pepin, Carroll; Elizabeth Maring, S.E.Mo.St.



Illinois Normal University
 Millikin University
 Northern Illinois University
 Southern Illinois University

Good:

Carthage College
 Central Missouri State
 Monmouth College
 Rockhurst
 Wheaton

MEN'S EXTEMPORANEOUS SPEAKING

Superior:

North Central College—Dick Everett
 Ripon College—Duffy Farrand
 University of Illinois, Chicago—Howard Gordon

Excellent:

Carthage College—Howard Fintzen
 Central (Iowa)—Pete Schabel
 Millikin University—Bill Heiss

Good:

Carroll College—Gary Maples
 Central Methodist University—Tom Stribling
 Illinois Normal University—Tom Miles
 Monmouth College—Joseph Millas
 Southern Illinois University—Pat Micken
 Wheaton—Robert Doty
 William Jewell—A. J. Wilson

MEN'S ORATORY

Superior:

Bradley University—Doug Ducate
 Carthage College—Fred Bess
 Southeast Missouri State—Bob Doolittle

Excellent:

Central Methodist—Tom Stribling

Illinois Normal University—Len O'Brian
 Monmouth College—Ream Lazaro
 Ripon College—Vern Cronen
Good:
 Carroll College—Dwight Bastian
 Coe College—Merle Ricklefs
 William Jewell—Raymond Gordon

WOMEN'S ORATORY

Superior:

Southeast Missouri State—Elizabeth Maring

Excellent:

Bradley University—Marian McKibben
 Illinois College—Beverly Hill
 Illinois Normal University—Carol Berthold
 Illinois Wesleyan University—Joan Treadway
 Northern Illinois University—Jo Sprague

Good:

Millikin University—Christine Yarrington
 University of Illinois, Chicago—Karen Jahnke

WOMEN'S EXTEMPORANEOUS SPEAKING

Superior:

Wisconsin State College, White-water—Colleen Roach

Excellent:

Illinois Normal University—Hope Davis
 Illinois Wesleyan University—Sarah Jo Long
 University of Illinois, Chicago—Sue Wartell

Good:

Central Methodist University—Georgia Elwell
 Southern Illinois University—Barbara Ellmore

WOMEN'S INTERPRETATION

Superior:

Carroll College—Cora Sue Pepin
 Monmouth College—Susan Gibson

Excellent:

Bradley University—Marian McKibben
 Central (Iowa)—Beatrice Werner
 Illinois Wesleyan University—Nancy Reed

Good:

Central Methodist University—Georgia Elwell
 Coe College—Franci Anderson
 Greenville College—Audrey Smith
 Illinois College—Barbara Hergenroeder
 Illinois Normal University—Virginia Smith
 University of Illinois, Chicago—Karen Jahnke

MEN'S INTERPRETATION

Superior:

Carthage College—Gary Gisselman
 Central Methodist University—Tom Stribling

Excellent:

Carroll College—Alfred Erickson
 Northern Illinois University—Taylor
 Westminster College—Brad Kent

Good:

Bradley University—Mathis
 Central Missouri State—Sam Scott
 Illinois Wesleyan University—William Tolson
 Millikin University—Billington
 Southern Illinois University—Barlow

THE PROVINCE OF THE SIOUX AND THE PROVINCE OF THE UPPER MISSISSIPPI: JOINT CONVENTION

The Bi-Province Tournament, of Upper Mississippi and Sioux, was held at the South Dakota School of Mines and Technology, Rapid City, South Dakota, on April 13 and 14. The following Universities and Colleges attended:

1. Wisconsin State College, Eau Claire
2. Concordia College, Minnesota
3. Northern State Teachers College, South Dakota
4. Univ. of Minnesota at Duluth, Minnesota
5. Upper Iowa University, Iowa
6. Morningside College, Sioux City, Iowa
7. Buena Vista College, Iowa

8. Sioux Falls College, South Dakota
9. Southern State Teachers, South Dakota
10. South Dakota School of Mines and Technology
11. Hamline College, Minnesota
12. Dakota Wesleyan, South Dakota
13. St. Thomas, Minnesota
14. Wisconsin State College, Oshkosh
15. St. Olaf, Minnesota
16. Westmar College, Iowa
17. Black Hills Teachers College, South Dakota
18. Yankton College, South Dakota
19. South Dakota State College, South Dakota
20. Wisconsin State College, River Falls
21. Nebraska State College, Chadron, Nebr.
22. Augustana, South Dakota
23. Macalester, Minnesota
24. Luther College, Iowa
25. Huron College, South Dakota