

THE FORENSIC

CONVENTION RULES

ΠΕΙΘΩ ΚΑΛΗ ΔΙΚΑΙΑ

SERIES 58

JANUARY, 1973

NO. 2

Your Hosts In Omaha



An array of trophies demonstrates the vigor and activity of the University of Nebraska-Omaha forensic squad. These students, along with Forensics Director Duane Aschenbrenner, will be on hand to help host the March Convention and Tournament.

The FORENSIC

of Pi Kappa Delta

SERIES 58

JANUARY, 1973

NO. 2

Table of Contents

UNO Welcomes You	3
Convention Program	4
Convention-Tournament Rules ..	5
Convention Costs	9
Extempore Topic	9
Convention-Contest Committees ..	10
President's Message	12
The Secretary's Page	13
Constitution Revision Proposals ..	14
First Province Produced Leaders ..	15
One Man Speaking	16
Help Us Select Leadership	17
Chapter Notes	18
Another Chapter for Ohio	28
New Members of PKD	29
Directory of PKD	29
The Editor Signs Off	35

EDITOR.....GEORGIA BOWMAN

ASSOCIATE EDITOR

[Features and Province News]. .JOHN BURT
Illinois Wesleyan University,
Bloomington, Ill. 61701

ASSOCIATE EDITOR

[Active Chapter News]. . . .PHYLLIS BOSLEY
Towson State College,
Baltimore, Md. 21204

ASSOCIATE EDITOR

[Letters to the Editor] STEVE BINGER
3104 S. Lyndale Ave.,
Sioux Falls, S.D. 57105

Published four times a year in October, January, March and May by Pi Kappa Delta. Subscription price is a part of the membership dues.

Office of publication: William Jewell College, Liberty, Mo. 64068. Second Class postage paid at Liberty, Mo. 64068.

Printed by Trojan Press, Inc.

North Kansas City, Mo. 64116

DIRECTORY OF PI KAPPA DELTA

NATIONAL PRESIDENT — Fred B. Goodwin,
Southeast Missouri State College, Cape Gir-
ardeau, Mo. 63701

NATIONAL VICE-PRESIDENT — James Gris-
singer, Otterbein College, Westerville, O.
43081

NATIONAL SECRETARY-TREASURER — Larry
Norton, Bradley University, Peoria, Ill.
61606

NATIONAL COUNCIL MEMBERS — John
Baird, California State College, Hayward,
Ca. 94542; L. A. Lawrence, Montana State
University, Bozeman, Mont. 59715; Evan
Ulrey, Harding College, Searcy, Ark. 72143

IMMEDIATE PAST PRESIDENT — H. Francis
Short, Kansas State College, Pittsburg, Kan.
66762

HISTORIAN — D. J. Nabors, East Central State
College, Ada, Okla. 74821

EDITOR OF THE FORENSIC — Georgia B.
Bowman, William Jewell College, Liberty,
Mo. 64068

STUDENT MEMBERS — Cathy Vetter, Wash-
burn University, Topeka, Kans. 66621;
Mark Tobin, University of Nebraska-
Omaha, Omaha, Neb. 68131

PROVINCE GOVERNORS

1. PROVINCE OF THE PLAINS — Duane
Aschenbrenner, University of Nebraska-
Omaha, Omaha, Neb. 68131
2. PROVINCE OF THE MISSOURI — Tom
Willett, William Jewell College, Liberty,
Mo. 64068
3. PROVINCE OF ILLINOIS — Dan Salden,
Southern Illinois University-Edwardsville,
Edwardsville, Ill. 62025
4. PROVINCE OF THE PACIFIC — Mrs.
Penny Byrne, University of Texas-El Paso,
El Paso, Tex. 79900
5. PROVINCE OF THE SIOUX — Jerry Win-
sor, Augustana College, Sioux Falls, S.D.
57105
6. PROVINCE OF THE LOWER MISSISSIPPI
— Mrs. Barbara Norman, Central State
University, Edmond, Okla. 73034
7. PROVINCE OF THE LAKES — Dan Millar,
Central Michigan University, Mt. Pleasant,
Mich. 48858
8. PROVINCE OF THE UPPER MISSISSIPPI
— Jack Starr, University of Wisconsin-
LaCrosse, LaCrosse, Wis. 54601
9. PROVINCE OF THE SOUTHEAST — Gene
Mathis, Carson-Newman College, Jef-
ferson City, Tenn. 37760
10. PROVINCE OF THE NORTHWEST — Larry
S. Richardson, Western Washington State
College, Bellingham, Wash. 98225
11. PROVINCE OF THE NORTHEAST —
Phyllis Bosley, Towson State College, Bal-
timore, Md. 21204

UNO Welcomes You

Dr. Ronald W. Roskens
UNO Chancellor

Welcome to the bi-annual national Pi Kappa Delta convention on the campus of the University of Nebraska at Omaha March 26-30.

UNO faculty, staff and students pride themselves on being good hosts. We are immensely pleased that your organization selected UNO as the site for the convention and tournament which will bring 1,500 top forensic students and coaches to our campus.

During your stay in Omaha, I hope that you will become well acquainted with UNO, a university which may be quite different from the colleges and universities where most of you are students.

Let me tell you a little about your convention site. UNO is a major comprehensive university in an urban setting. UNO is a teaching-oriented institution, with a strong commitment to community service. Last fall, 13,117 students enrolled in five undergraduate colleges and the new School of Public Affairs and Community Service, and the Graduate College.

The UNO student body, too, is unusual: About 75 per cent of the students are employed. Many attend classes only during evening hours.

No doubt you will want to tour the campus and visit facilities which we feel are unique.

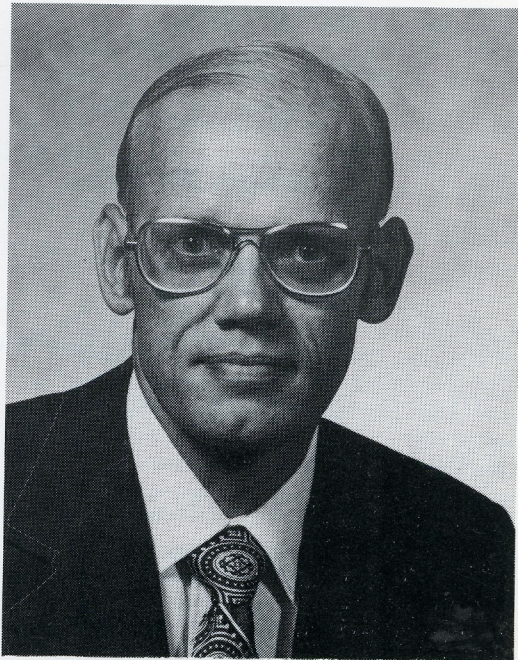
Your tour should include the School of Public Affairs and Community Service, a facility which formerly was a convent. This School, west of the Student Center at 112 S. Elmwood Road, is UNO's newest academic division offering degree programs in criminal justice, public administration and social work, and courses in gerontology and urban studies.

Directly behind the School is an old carriage house which has been converted into a Writer's Workshop. This facility offers an informal gathering place for writers, and space for seminars and individual instruction in the various phases of creative writing.

You may also want to visit Allwine Hall, the home of the UNO Biology and

Chemistry Departments. On the south side of the building is a greenhouse. On the second floor, inside, is an aquarium room with collections of fresh water fish, native Nebraska fish and salt water fish.

A campus tour also should include the UNO Fieldhouse, which last year received



Dr. Ronald W. Roskens

a \$450,000 face-lifting, and the Student Center with its new addition and student plaza area.

We at the university welcome you because, quite frankly, we welcome opportunities for service. We welcome the chance to be involved in programs such as this because we enjoy having a role in the very vital area of continued personal growth.

May your visit here be a memorable one. And may your participation in this convention represent a new link between you and UNO.

Pi Kappa Delta Convention Program

March 26-30, 1973

University of Nebraska at Omaha

Monday - March 26

8:30 a.m. - 6:00 p.m. — Registration

8:00 p.m. — Business Meeting:
Memorial Service
Charter Presentations
Convention Picture
Announcements

Tuesday - March 27

8:00 a.m. — Draw for Extempore I

9:00 a.m. — Extempore I; Oratory I

10:30 a.m. — Interpretation I
Informative Speaking I
Student Meeting

12:00 — Luncheon: Province Governors

1:00 p.m. — Debate I; Discussion I

2:30 p.m. — Debate II

4:00 p.m. — Debate III; Discussion II

7:00 p.m. — Province Meetings

8:00 p.m. — Students Meet with Council;
— Committee Meetings;
— Coaches Meeting

Wednesday - March 28

8:00 a.m. — Interpretation II
Informative Speaking II

9:15 a.m. — Debate IV

10:45 a.m. — Debate V

12:00 — Luncheon: Past Presidents
and National Council

1:00 p.m. — Debate VI

3:00 p.m. — Business Meeting: Elect
President, Vice-President,
Sec'y-Treasurer

5:00 p.m. — Draw for Extempore II
Student Meeting

7:00 p.m. — Extempore II; Oratory II

8:30 p.m. — Province Meetings

Thursday - March 29

8:00 a.m. — Debate VII
Discussion III

9:30 a.m. — Business Meeting:
Elect National Council
Convention Speaker

11:00 a.m. — Draw for Extempore III
Student Meeting

12:00 — Luncheon: Highest Distinction
and Special Distinction
Members and National Council

1:00 p.m. — Extempore III
Oratory III

2:30 p.m. — Enjoy Omaha

Friday - March 30

9:00 a.m. — Debate VIII
Discussion IV

10:30 a.m. — Interpretation III
Informative Speaking III
Student Meeting

12:00 — Luncheon: Governors with
Old and New Councils

1:00 p.m. — Championship Debate
Anniversary Oratory

2:30 p.m. — Business Meeting

7:00 p.m. — Banquet: Installation of
Officers; Results

CONVENTION AND CONTEST RULES

GENERAL

1. Each student and one faculty director of forensics from each college attending the convention must pay the \$10 registration fee. Extra judges and wives or husbands of faculty members will not be charged the registration fee.
2. Each student delegate to the convention and each participant in the tournament must be a bona fide undergraduate student who has not already had four years of forensic participation, and who is carrying a minimum of twelve hours of college work with passing grades at the time of the convention. He must be a member of Pi Kappa Delta or must have filed a membership application with the National Secretary and sent in his initiation fee.
3. All tournament entries must be sent to the National Secretary so as to show a postmark not later than March 1, 1973.
4. All questions regarding tournament events not covered by the rules will be decided by the individual contest committee and the Contest Chairman. Questions concerning interpretation of tournament rules should be directed to H. Francis Short, Kansas State College, Pittsburg, Kans., 66762.

JUDGES

1. All competing chapters must provide judges in proportion to the number of entries. The formula for determining the number of judges to be provided follows:
Let X equal the number of debate teams entered.
Let Y equal the number of entries in individual events.
Formula: $4X + Y = 12$.
Explanation: If under this formula a

chapter's total is less than 12, only ONE judge must be provided. If the total is 12 or more, TWO judges are required. All judges should expect to judge at least 10 rounds of competition. Schools whose judges fail to fulfill assignments may be charged \$2 for each round missed and may be ineligible for individual or group awards.

2. An exception to the above rule provides for those colleges whose entire delegation is limited to one student representative.
3. No student member of a delegation will be permitted to serve as a judge.

AWARDS

1. Gold medals will be awarded to winners of **Superior** ratings in each event. Certificates will be awarded to winners of **Excellent** ratings. Certificates will be awarded to the school for each student who receives a rating of **Superior** or **Excellent**.
2. Sweepstakes points will be awarded to each chapter participating according to the following formula:

In debate:	Superior rating	10 points
	Excellent	8 points
	Good	6 points
	Participation	2 points

In individual events:

Superior rating	5 points
Excellent	4 points
Good	3 points
Participation	1 point

3. Superior sweepstakes awards will be made to the 10 percent of the chapters accumulating the highest number of sweepstakes points. Excellent sweepstakes awards will be made to the 20 percent of the chapters ranking next in number of sweepstakes points.

INDIVIDUAL EVENTS

GENERAL

I. Entries:

1. Each chapter may enter two contestants in each event. The exception to this rule is that only **one** entry per chapter will be allowed in INFORMATIVE SPEECH.
2. Contestants must be present at the beginning of each round (except in extemporaneous speaking; see specific rules) and should remain until the round has been concluded. This rule precludes scheduling individual contestants in events that are held simultaneously.
3. Failure to meet either the general rules or the rules specified below for each event will result in a contestant's being ineligible for any final rating.

II. Rounds:

1. There will be three rounds of competition in each event. Each contestant must participate in three rounds to receive a final rating.
2. All sections of each event will be scheduled simultaneously according to the published convention schedule. The number of sections will be determined by the number of contestants entered in each event.

III. Judging:

1. Judging for oratory, extemporaneous speaking, informative speaking and oral interpretation will be done by two judges in each section in each round. The judges will rank only the four highest ranking speakers, indicating first, second, third, and fourth place. All others in each section will be ranked fifth. Judges will include written comments on the ballot. Judges will not reveal rankings or decisions to the contestants.
2. Specific rules for judging discussants are listed under the specific rules for DISCUSSION.

IV. Awards:

1. Superior ratings will be awarded to the top 10 percent of contestants in each event.
2. Excellent ratings will be awarded to the next 20 percent.
3. Good ratings will be awarded to the next 30 percent.

SPECIFIC

I. Oratory:

1. Orations must not exceed 1300 words in length, of which not more than 150 words may be quoted material.
2. Orations should be the original work of the contestants and should be designed to convince, inspire, and/or motivate.
3. A typed copy of the oration must be submitted at the beginning of the first round in order for the contestant to be permitted to compete. A typed cover sheet for the oration must include the name of the school, the legible signature of the student attesting to the originality of the oration, the number of words, the number of quoted words and attest that the oration has not been delivered prior to this school year. The copy submitted will not be returned and may be used for comparison with the oration as delivered. The oration delivered must conform to the manuscript.

II. Extemporaneous Speaking:

1. The general area shall be Changing American Values and the sub-divisions for each round shall be as follows: Round I - Drug Culture; Round II - The Family Unit; Round III - Moral and Religious Values. Specific topics for each round are determined by the contest committee.
2. Speeches must not exceed six minutes in length. An additional maximum two minutes will be allowed for an impromptu answer to the question asked by the judge at the close of the original speech. Time cards will be available for this event.

3. Topics for extemporaneous speeches will be posted in a designated room at five minute intervals. Speakers will choose from posted topics, reporting their choice to the committee chairman. Speakers will report to their assigned sections one hour after this posting.

III. Oral Interpretation:

1. The program of each contestant for each round must not exceed eight minutes in length, including material read from manuscript, an extemporaneous introduction, and transitions.
2. The content of each program must include at least two selections with the arrangement centered in an integrated theme. Each contestant may offer a different theme in each round, or he may use the same theme in more than one round. He must, however, present three different programs employing published literature of quality.
Round I — poetry.
Round II — prose.
Round III — dramatic literature.

IV. Informative Speech:

1. Each chapter may enter one contestant in this event.
2. Informative speeches should be essentially non-persuasive, dealing with concepts, processes, ideas, or objects.
3. Audio visual aids may be used but are not required.
4. The speech may be memorized or delivered extemporaneously. It may be delivered with or without notes but not more than 8 minutes will be allotted each speaker. Time cards will be available.
3. The speech shall be the original production of the speaker and shall not have been delivered prior to the current school year.

V. Discussion:

1. The question for discussion will be: "How can we improve the quality of forensics in American colleges and universities?"
2. Each round will last a maximum of an hour and a half.
3. The leader for Round II will be appointed by the contest committee, a leader will be elected from the group at the conclusion of Rounds II and III.
4. The pattern of discussion for each round will be as follows:

ROUND I: All discussants will meet together for the purpose of hearings, dialogue, etc.

ROUND II. Definition and delineation stage. (What is the nature, extent, and significance of the problem? What terms of the question need defining?)

ROUND III. Problem-analysis stage. (What are the probable causes of the problem? By what criteria should probable solutions be measured?)

ROUND IV. Solutions stage. (What possible solutions are there? What is the best solution for the problem?)

5. Judging for discussion differs from that of other individual events in that one of the two judges in each round will be a traveling judge. In each round each contestant will be evaluated by a regular judge and more than one "traveling judge." An average of these evaluations for each round will be computed for each section. At the end Round IV each discussant will evaluate each other member of his section. The final rating of these evaluations will be based two-thirds on the evaluations of the regular judge and one-third divided equally between the averages of the traveling judges and those of the other discussants. Regular judges will use a different scale for rating leaders from that used for rating other participants.

DEBATE — GENERAL

I. Divisions:

1. There will be three divisions, an Extempore, a Championship, and a Traditional.

II. Entries:

1. Each chapter may enter a maximum of three debate teams in this tournament, in any combination not to exceed the maximums listed for each division.
 - a) A maximum of one team in the Extempore Division.
 - b) A maximum of one team in the Championship Division.
 - c) A maximum of two teams in the Traditional Division.
2. Experience and expertise are criteria for entries only in the Championship Division. In this division each member of the team entered must have won 50 percent of his tournament debates during the 1972-73 season, with his record having a minimum of 20 debates.
3. Substitutions may be made in the Traditional Division only. No substitutions may be made in the Extempore or Championship Divisions.

III. Rounds:

1. There will be eight rounds for all teams in the Championship Division and the Traditional Division. There will be six rounds for all teams in the Extempore Debate Division. In the Championship Division two teams will participate in a final ninth round.
2. Each team entered will participate in an equal number of affirmative and negative rounds.

IV. Judging:

1. For all rounds except the elimination rounds in the Championship Division one judge will be used.

2. Judges may make comments to debaters but will not reveal decisions.

V. Awards:

1. Superior ratings will be awarded to the top 10 percent of the teams in each division.
2. Excellent ratings will be awarded to the next 20 percent.
3. Good ratings will be awarded to the next 30 percent. Win-loss records will be used as the first criterion for award determination; ties will be broken by employing team ratings.

VI. Scheduling:

1. Where the division is large enough to permit, every fourth team will be seeded on the basis of performance earlier in the year, so that every team will meet only two seeded teams during the course of all the rounds. Exceptions to this rule are noted in specific rules for the Championship Division, and will also be necessary in the Extempore Division. Seedings will be determined by the appropriate committee with the assistance of the Province Governors and qualified Pi Kappa Delta members in the respective areas.

SPECIFIC

I. Extempore Debate:

1. SUBJECT: The general area from which the specific subjects will be selected is: American Military Involvement Abroad. Specific topics will be chosen by the committee and announced the day before the rounds at which they are to be debated. In each round all teams participating will debate the same subject.
2. FORMAT: Two man teams. Traditional 10-5 format will be used.

II. Championship Debate:

- 1. SUBJECT: The national topic, Resolved: That the Federal Government should provide a program of comprehensive medical care for all United States citizens.
- 2. SCHEDULING: In this division scheduling will follow the general form outlined in VI under 'General Debate Rules' up to and including the 6th round. In the 7th round hidden quarterfinals will be held. In the 8th round hidden semi-finals will be held. In this manner each team participating will debate 8 rounds, with the finalists not announced until after 8 rounds have been completed. A final round (9th) will be held between the two winners of the semi-final round.
- 3. FORMAT: A cross-examination style of debate will be observed in this division. The debaters will decide which affirmative speakers will question the negative speakers, and

which negative speakers will question the affirmative speakers. Time limits for speeches will be:

First affirmative constructive	8 minutes
Cross exam by negative	3 minutes
First negative constructive	8 minutes
Cross exam by affirmative	3 minutes
Second affirm. constructive	8 minutes
Cross exam by negative	3 minutes
Second negative constructive	8 minutes
Cross exam by affirmative	3 minutes
First negative rebuttal	4 minutes
First affirmative rebuttal	4 minutes
Second negative rebuttal	4 minutes
Second affirmative rebuttal	4 minutes

III. Traditional Debate:

- 1. SUBJECT: The national topic, Resolved: That the Federal Government should provide a program of comprehensive medical care for all United States citizens.
- 2. FORMAT: The traditional 10-5 format will be used.

CONVENTION COSTS

REGISTRATION: \$10 for each student and coach. Wives and guests do not pay registration fee.

HOUSING:

Motels (all rates the same);

Prom Town House Motor Inn, 70th and Dodge (within easy walking distance of the campus).

New Tower Hotel Courts, 77th and Dodge (busses every 20 minutes).

Wayside Inn, 78th and Dodge (busses every 20 minutes).

3, 4, 5 persons to room @ \$5.50 per person per night.

2 persons to room 1 double bed @ \$7.00 per person per night.

2 persons to room 2 twins @ \$7.50 per person per night.

1 person to room @ \$13.00 per person per night.

New Paxton Hotel, 14th and Farnum (Downtown Omaha; you will need a car)

Single occupancy, 5 nights, \$45

Twin occupancy, 5 nights, \$30 per person.

(No triple or quadruple occupancy at the New Paxton).

Each school will make its own housing reservations directly with the motel or hotel.

FOOD:

Breakfast from 7 a.m. on a "pay-as-you-go" basis.

Meal tickets (lunch and dinner Tuesday and Wednesday, lunch only on Thursday and Friday), lunch at \$1.25, dinner, \$1.60, total, \$8.20.

Banquet, \$4.25.

EXTEMPORANEOUS SPEAKING TOPIC
is
CHANGING AMERICAN VALUES

The following areas of study will be used in each of the three rounds of speaking.

- Round I. Drug Culture
- Round II. The Family Unit
- Round III. Moral and Religious Values

CONVENTION AND CONTEST COMMITTEES

CONVENTION COMMITTEES

1. CONVENTION COMMITTEE
Convention Chairman: Evan Ulrey
Convention Officer: Duane Aschenbrenner
Harding College
University of Nebraska at Omaha
2. PROVINCE COORDINATOR
Les Lawrence
Montana State University
3. PARLIAMENTARIAN:
John Baird
California St. Col. - Hayward
4. NOMINATING COMMITTEE
Chairman: Grace Walsh
Member: Ray Yeager
Member: Hollis Todd
Member: Roger Hufford
Member: Hal Bochen
Wisconsin State - Eau Claire
Bowling Green St. Uni.
Mississippi College
Clarion State College
Fresno State College
5. RESOLUTIONS COMMITTEE
Chairman: Andrew Jones
Member: Roy Murphy
Member: Roselyn Freedman
Member: Daniel Miller (Student)
Delta State College
Southeast Louisiana St. Uni.
Morris Harvey College
University of Texas - El Paso
6. CONVENTION EVALUATION COMMITTEE
Chairman: John Cease
Member: Martha Haun
Member: Robert Brewer
Member: William Yaremchuk
Member: Frank Driscoll (student)
Wisconsin St. Uni.
- Whitewater
University of Houston
Central Missouri St. Uni.
Monmouth College
South Dakota St. Uni.
7. CONVENTION INVITATION COMMITTEE
Chairman: James Grissinger
Member: Wayne Wall
Member: Seth Hawkins
Otterbein College
Marietta College
Southern Conn. St. Col.
8. CONVENTION PUBLICITY COMMITTEE
Chairman: Georgia Bowman
Member: John Burt
Member: Phyllis Bosley
Member: Steve Binger
Member: Cathy Vetter
Member: Mark Tobin
William Jewell College
Illinois Wesleyan University
Towson State College
Augustana (S.D.) College
Washburn University
University of Nebraska at Omaha
9. CONSTITUTION REVISION COMMITTEE
Chairman: James Grissinger
Member: John Burt
Member: Bob Lyons
Otterbein College
Illinois Wesleyan College
Rocky Mountain College

10. CHARTER AND STANDARDS COMMITTEE

<i>Chairman:</i>	John Baird	California State - Hayward
<i>Member:</i>	Jack Starr	Wisconsin State U. - LaCrosse
<i>Member:</i>	Phyllis Bosley	Towson State College
<i>Member:</i>	Helen Schafer	Angelo State University
<i>Member:</i>	Ed Hollatz	Wheaton College

11. PUBLIC RELATIONS AND RESEARCH COMMITTEE

<i>Chairman:</i>	Jerry Winsor	Augustana (S.D.) College
<i>Member:</i>	Marcia Mulkey	Western Illinois University

CONTEST COMMITTEES

1. CONTEST CHAIRMAN

H. Francis Short	Kansas State College
------------------	----------------------

2. CROSS X DEBATE

<i>Chairman:</i>	Douglas Duke	Central State College
<i>Member:</i>	Michael Dues	Sacramento State College

3. TRADITIONAL DEBATE

<i>Chairman:</i>	David Matheny	College of Emporia
<i>Member:</i>	John Harrison	Rockhurst College

4. EXTEMPORE DEBATE

<i>Chairman:</i>	Gary Petersen	University of Puget Sound
<i>Member:</i>	C. W. Mangrum	Southeastern Oklahoma State University

5. EXTEMPORANEOUS SPEAKING

<i>Chairman:</i>	Eugene Mathis	Carson Newman College
<i>Member:</i>	Dan Bozik	Augustana College

6. ORATORY

<i>Chairman:</i>	Tom Willett	William Jewell College
<i>Member:</i>	Dan Millar	Central Michigan Uni.

7. DISCUSSION

<i>Chairman:</i>	Dan Salden	Southern Illinois University - Edwardsville
<i>Member:</i>	Jim Fletcher	Westmar College
<i>Member:</i>	Marvin Kleinau	Southern Illinois U. - Carbondale

8. INTERPRETATION

<i>Chairman:</i>	Larry Hannah	Eastern Montana College
<i>Member:</i>	Brenda Taylor	Towson State College

9. INFORMATIVE SPEAKING

<i>Chairman:</i>	Jerry Carstens	Wisconsin St. U. - River Falls
<i>Member:</i>	Mary Alice Baker	Lamar State University

10. ANNIVERSARY ORATORY

<i>Chairman:</i>	John Burt	Illinois Wesleyan University
------------------	-----------	------------------------------

11. JUDGING

<i>Chairman:</i>	Tom Harte	Southeast Missouri St. U.
<i>Member:</i>	Pete Hamilton	Kansas State College

The President's Message

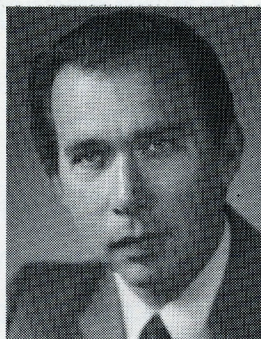
Fred Goodwin

The lexicon of philosophers, regardless of their "school," acknowledges something labeled as the "process character of reality." People and circumstances always change. They cannot remain static. So it is with Pi Kappa Delta. We have made significant changes in the 1973 National Convention and Tournament format this year, adapting to changes which are in the air. Most changes are reported elsewhere in this issue, but let me highlight those things of special import to chapter sponsors and student members.

First, for students interested in individual competitive speaking, the potential for entry has been liberalized. A new contest in expository speaking is being offered, and the schedule has been revised to provide the opportunity for student participants to enter several events. We thus accommodate growing numbers of our order who express high interest in individual events.

Second, in a move toward greater cooperation and integration of the forensic community, the NDT Committee has invited Pi Kappa Delta to supply a team to compete in its 1973 Nationals. The National Council has agreed to qualify the team which wins the Championship Cross-examination Division at Omaha. Bring your best.

Third, the days of housing delegates in dormitories on host campuses are gone. In years ahead we are likely to locate Nationals at convention centers rather than university sites, and in transition toward that change this year each chapter is responsible for arranging its own housing. The National Council, in cooperation with Prof. Duane Aschenbrenner of the University of Nebraska at Omaha staff, has negotiated with a number of hotels and motels. Their rates are listed elsewhere in this issue. Only one of the motels, the Prom Town House, is within easy walking distance of the University. The others will require that you have a car or be willing to use the regular public transportation which passes directly by the campus. Only about half the anticipated delegates can be



housed within walking distance, so we ask that you make your reservations early and in accordance with your needs.

Fourth, new contests mean new judging requirements. To insure availability of qualified judges, additional judges will be required of those schools with large contest entries. Please note this rule change with care and prepare for it.

We believe the 1973 National Convention and Tournament will be a good one. New contest opportunities are opening for students. Important policy matters affecting coaches for years to come are on business meeting agendas, including the likelihood of a proposal to have more than one "national" debate topic each year. The debate should be warm, and we need your participation.

I sincerely hope that the Omaha Convention will be the largest and one of the best in Pi Kappa Delta history. It should be.

Anniversary Special

One of the special events of the 60th anniversary convention and tournament in March will be a commemorative oratory contest open to the seven founding schools still having active PKD chapters. Those eligible are Illinois Wesleyan University, Ripon College, Ottawa University, Morningside College, College of Emporia, Kansas Wesleyan University, and Southwestern College.

Theme of the contest is the PKD motto, "The Art of Persuasion — Beautiful and Just."

The event will be held simultaneously with the final round of championship debate and will be judged by a panel of members from The Order of the Beards — past national presidents.