

# OUR COLLEGE PRESIDENTS

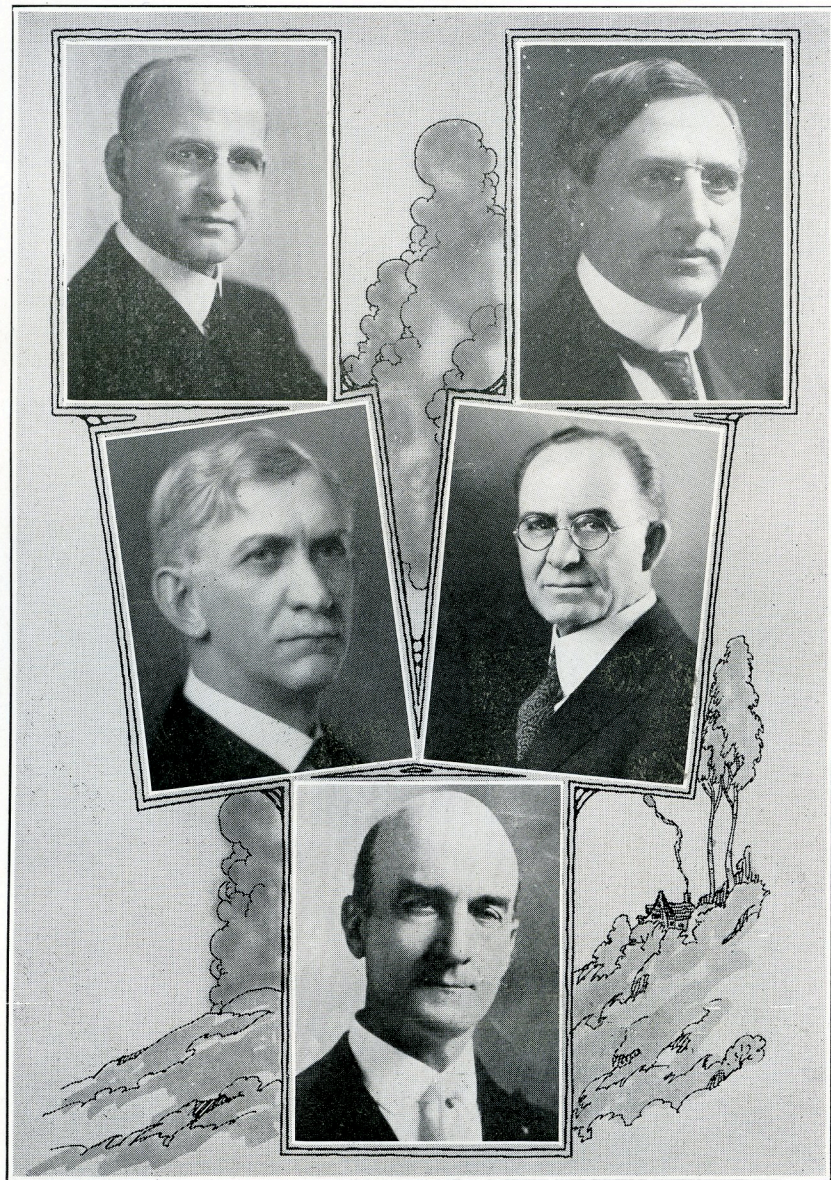
JOHN L. HILLMAN,  
Simpson,  
Iowa Epsilon

FRANK E. MOSSMAN,  
Morningside,  
Iowa Delta

G. W. FRASIER,  
Colorado Teachers,  
Colorado Beta

GEORGE S. McCUNE,  
Huron,  
South Dakota Beta





# OUR COLLEGE PRESIDENTS

LEONARD W. RILEY  
Linfield,  
Oregon Alpha

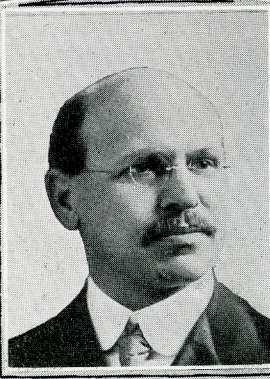
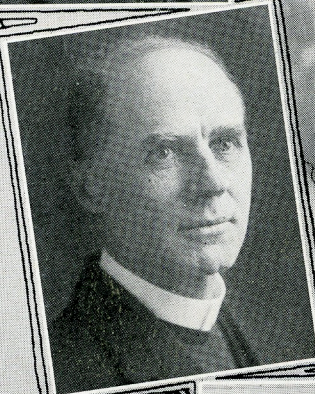
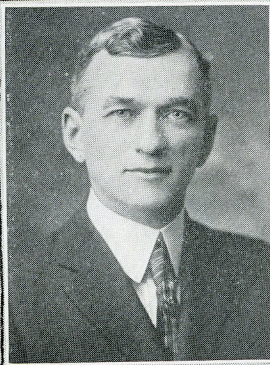
B. H. KROEZE,  
Jamestown,  
North Dakota Alpha

A. AMES MONTGOMERY,  
Centre,  
Kentucky Alpha

EDWARD H. TODD,  
Puget Sound,  
Washington Alpha

BRADFORD KNAPP,  
Oklahoma A. and M.,  
Oklahoma Alpha





# OUR COLLEGE PRESIDENTS

HOWARD W. FOGHT,  
Northern Teachers,  
South Dakota Zeta

HOWARD McDONALD,  
Parsons  
Iowa Zeta

O. J. JOHNSON,  
Gustavus Adolphus  
Minnesota Gamma

ROSS T. CAMPBELL,  
Sterling  
Kansas Lambda

E. D. KOHLSTEDT,  
Dakota Wesleyan,  
South Dakota Alpha





SEVEN STATE WINNERS IN THE OLD LINE INTERCOLLEGIATE  
ORATORICAL CONTEST

(Top) 1. Kentucky, Fagan Dixon, Georgetown, Kentucky Alpha. 2. Kansas, Joseph T. Owen, Wesleyan, Kansas Eta

(Middle) 3. Iowa, Robert Bartlett, Parsons, Iowa Zeta. 4. Nebraska, Emilio M. del Rosario, Wesleyan, Nebraska Alpha. 5. Wisconsin, Willard Reeves, Carroll, Wisconsin Beta.

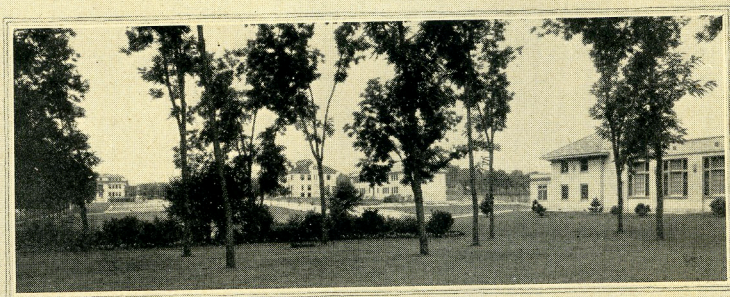
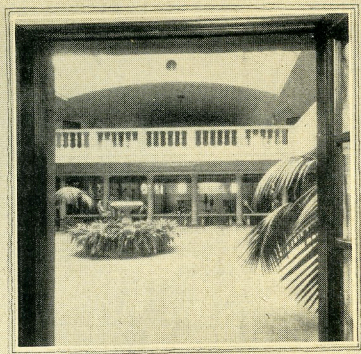
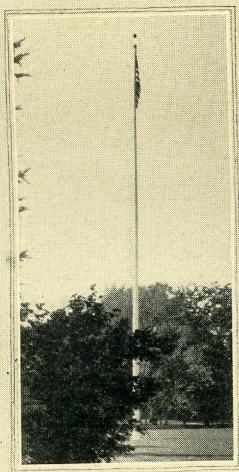
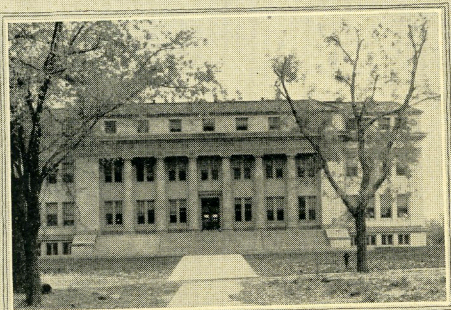
(Bottom) 6. Missouri, Kenford Nelson, Park, Missouri Beta. 7. South Dakota, Marcus Houge, Augustana, South Dakota Eta.





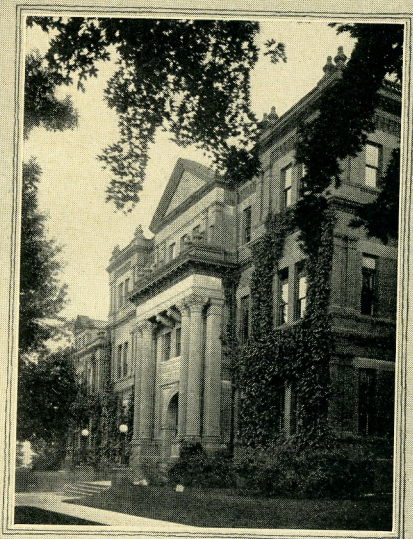
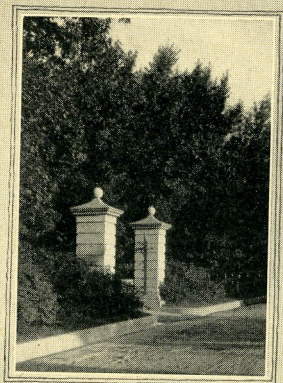
WINTER SPORTS IN ESTES PARK





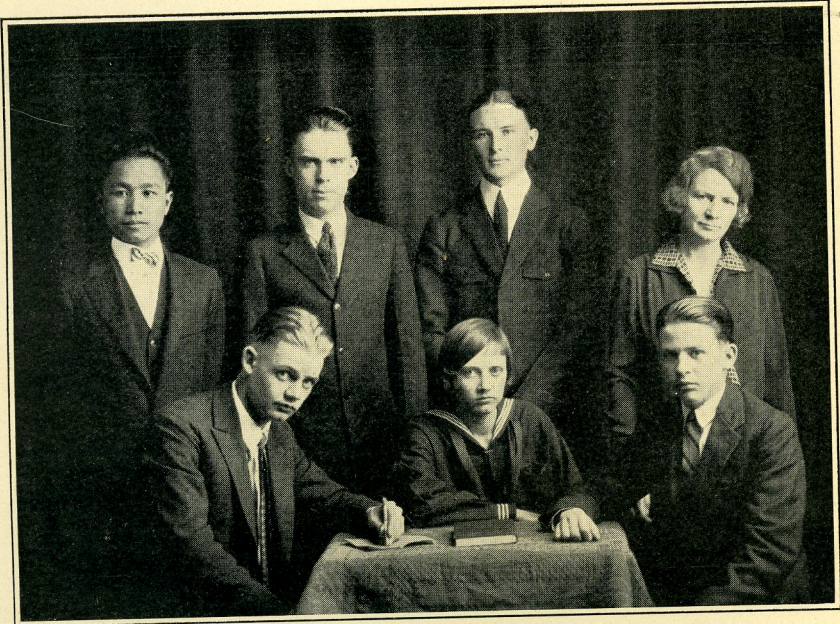
COLORADO ALPHA  
Where the Men Will Assemble  
Colorado Agricultural College, Fort Collins





COLORADO BETA  
Where the Women Will Assemble  
The Colorado Teachers College, Greeley





COLORADO GAMMA, CHAPTER 110  
Western State College, Gunnison



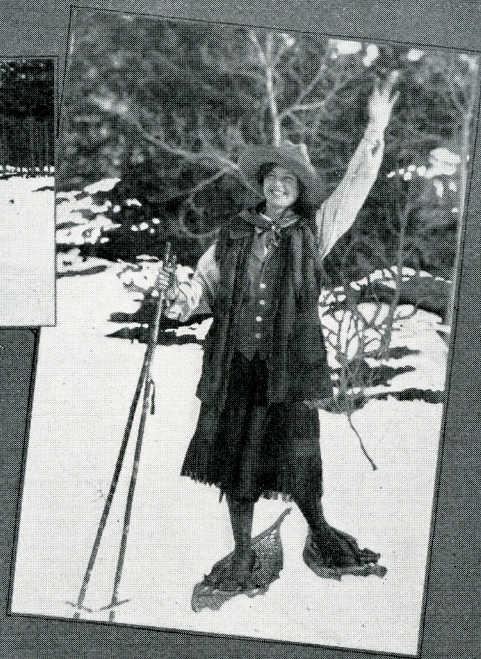
IOWA LAMBDA, CHAPTER 109  
University of Dubuque, Dubuque





Stanley B. Houck, natinal president of Delta Sigma Rho, national honcrary forensic fraternity who will be the guest of the Sixth Annual  $\Pi K \Delta$  convention and the chief speaker at the banquet April 1.





Scenes at "retreat" of the Colorado Alpha, Agricultural College, chapter in Estes Park December 5—6, 1925.  
 National President Alfred Westfall greeting debate coach Harvey M. De Weerd at Lory-hi, the college mountain headquarters.  
 ..One, of the amateur skiers in characteristic pose, Frances Jones, president of the Colorado Alpha chapter, says, "Come on in;  
 the snow is fine."