

CHAPTER DIRECTORY

KENTUCKY

Alpha—Georgetown College, Georgetown
Beta—Centre College, Danville
Gamma—Kentucky Wesleyan College,
Owensboro

LOUISIANA

Alpha—Louisiana College, Pineville
Beta—Centenary College, Shreveport
Delta—Louisiana Polytechnic Institute, Ruston
Gamma—Southwestern Louisiana, Lafayette
Epsilon—Northwestern State College,
Natchitoches
Zeta—Southeastern State College, Hammond

MAINE

Beta—University of Maine, Orono

MICHIGAN

Alpha—Kalamazoo College, Kalamazoo
Gamma—Hope College, Holland
Delta—Michigan State Normal College,
Ypsilanti
Epsilon—Michigan State University
Eta—University of Detroit, Detroit
Theta—Central Michigan College, Mount
Pleasant

MINNESOTA

Alpha—Macalester College, St. Paul
Beta—St. Olaf College, Northfield
Gamma—Gustavus Adolphus College, St. Peter
Delta—Hamline University, St. Paul
Epsilon—College of St. Thomas, St. Paul
Zeta—Concordia College, Moorhead
Eta—College of St. Catherine, St. Paul
Theta—St. Mary's College, Winona

MISSISSIPPI

Alpha—Millsaps College, Jackson
Beta—Mississippi State College, State College
Gamma—Mississippi State College for Women,
Columbus
Delta—Mississippi Southern College, Hattiesburg

MISSOURI

Alpha—Westminster College, Fulton
Gamma—Central College, Fayette
Delta—William Jewell College, Liberty
Zeta—Culver-Stockton College, Canton
Eta—Central Missouri State, Warrensburg
Theta—Northeast Missouri State Teachers Col-
lege, Kirksville
Iota—Southeastern State College, Cape
Girardeau
Lambda—Missouri Valley College, Marshall
Mu—Tarkio College, Tarkio
Nu—Drury College, Springfield
Xi—Rockhurst College, Kansas City
Omicron—St. Louis University, St. Louis

MONTANA

Beta—Montana State College, Bozeman

NEBRASKA

Alpha—Nebraska Wesleyan University, Lincoln
Gamma—Doane College, Crete
Delta—Hastings College, Hastings
Zeta—Kearney State Teachers College, Kearney
Theta—University of Omaha, Omaha
Iota—Wayne State Teachers College, Wayne
Kappa—Midland College, Fremont

NORTH CAROLINA

Beta—Wake Forest College, Winston-Salem
Delta—Lenoir Rhyne College, Hickory
Epsilon—Appalachian State Teachers College,
Boone

OHIO

Alpha—Baldwin-Wallace College, Berea
Beta—Heidelberg College, Tiffin
Gamma—Hiram College, Hiram
Delta—University of Akron, Akron
Epsilon—Otterbein College, Westerville
Zeta—Marietta College, Marietta
Eta—Bowling Green State University, Bowling
Green
Iota—Kent State University, Kent

of its kind in our nation. Each high school of this state is permitted to elect two senators and a number of representatives in proportion to its enrollment to represent that student body at the Congress. These young people serving in the capacity of senators and representatives from their individual high schools then convene on the campus of Pacific Lutheran College and in one day conduct committee meetings,



Don Douglas, Pacific Lutheran College's student director of Washington State High School Congress, presents the first place award to Thomas Ing from Highline High School in Seattle.

a session of the House of Representatives and Senate, and a joint session of Congress, passing legislation much in the same manner as does the Congress of the United States. These young people are judged on their use of parliamentary procedure, participation, and their general knowledge of the legislation which comes before each assembly. At the conclusion of the joint session of Congress scores are tabulated and trophies are given for first, second, and third place winners.

The next major event in which the Pacific Lutheran College debate squad participated was the Western Speech Association held at Pepperdine College in Los

Angeles. Of the ten contestants participating in this tournament Janet Turman and Bettelou MacDonald won first place in senior women's debate and Don Douglas and Tom Reeves won first place in senior men's debate. This was the first time in the history in WSA that the same school has won both senior men's and women's debate.

In individual events Calvin Capener won second place in junior men's oratory, and Janet Turman won second place in senior women's oratory. In over all participation Pacific Lutheran had seven of its ten contestants in the finals of individual events. The senior division was able to compile sufficient points to win the senior division award.

On January 10th and 11th the Pacific Lutheran squad traveled to the Seattle Pacific College Tournament at Seattle. Tom Reeves and Don Douglas garnered top honors in senior debate with a record of five wins and no losses. Reeves also tied for first place in extemporaneous speaking with Bettelou MacDonald, and Douglas copped first in oratory. Individually, Calvin Capener won first place in radio speaking and took runner-up spot in interpretative reading. Jackie Slater, who with her colleague Jeris Randall tied for second place in debate with Joyce Alton and Louise Kraable, took third in interpretative reading. Miss Randal placed third in after dinner speaking. Dolores Nims placed second and Jim Traynor third in women's and men's oratory, respectively.

RIPON COLLEGE

Initiation of seven new members gave the Wisconsin Alpha Chapter of Pi Kappa Delta a new burst of energy.

Plans are being made to foster speech activities on the campus, stimulate students' interest in forensics, and to better participation in intra-school competition for the remaining year, according to Ross Lathrop, newly-elected chapter president.

Other officers chosen at the initiation and meeting in February were: Joanne Tostrud, vice president; Jon Weise, secretary-treasurer, and Liga Viksne, corresponding secretary. Howard C. Hansen, chairman of the college's speech department, is the group's sponsor.

CHAPTER DIRECTORY

OKLAHOMA

Alpha—Oklahoma A & M College, Stillwater
Beta—University of Tulsa, Tulsa
Gamma—Oklahoma Baptist University, Shawnee
Epsilon—Oklahoma City University, Oklahoma City
Eta—East Central State College, Ada
Theta—Southeastern State College, Durant
Iota—Central State College, Edmond
Kappa—Phillips University, Enid
Lambda—Northeastern State College, Tahlequah
Mu—Southwestern State College, Weatherford

OREGON

Alpha—Linfield College, McMinnville
Beta—Lewis and Clark College, Portland

PENNSYLVANIA

Alpha—Grove City College, Grove City

SOUTH DAKOTA

Alpha—Dakota Wesleyan University, Mitchell
Beta—Huron College, Huron
Gamma—Yankton College, Yankton
Delta—South Dakota State College, Brookings
Epsilon—Sioux Falls College, Sioux Falls
Zeta—Northern State Teachers College, Aberdeen
Eta—Augustana College, Sioux Falls
Iota—Black Hills State Teachers College, Spearfish
Kappa—South Dakota State Teachers College, Springfield

TENNESSEE

Alpha—Maryville College, Maryville
Gamma—East Tennessee State College, Johnson City
Delta—Tennessee Polytechnic Institute, Cookeville
Epsilon—Carson-Newman College, Jefferson City
Zeta—Middle Tennessee State College, Murfreesboro
Eta—David Lipscomb College, Nashville

TEXAS

Beta—Trinity University, San Antonio
Delta—Howard-Payne College, Brownwood
Epsilon—Texas Christian University, Fort Worth
Zeta—Mary Hardin-Baylor College, Belton
Eta—North Texas State College, Denton
Theta—Hardin-Simmons University
Iota—Baylor University, Waco
Mu—Stephen F. Austin, Nacogdoches
Nu—Texas A & I, Kingsville
Xi—Abilene Christian, Abilene
Omicron—University of Houston, Houston
Pi—St. Mary's University, San Antonio

WASHINGTON

Alpha—College of Puget Sound, Tacoma
Beta—Seattle Pacific College, Seattle
Gamma—State College of Washington, Pullman
Delta—Whitworth College, Spokane
Epsilon—Pacific Lutheran, Parkland
Zeta—Western Washington College of Education, Bellingham
Eta—St. Martin's College, Olympia
Theta—Whitman College, Walla Walla

WEST VIRGINIA

Beta—Marshall College, Huntington
Gamma—Morris Harvey College, Charleston

WISCONSIN

Alpha—Ripon College, Ripon
Beta—Carroll College, Waukesha
Delta—River Falls State College, River Falls
Epsilon—Whitewater State College, Whitewater
Zeta—Eau Claire State College, Eau Claire

Seven initiates in the organization as a result of participation this year are: Msrs. John Bachus, Kenneth Kahl, Ronald Rock, Weise, Lathrop, and John Wolf, and the Misses Tostrud and Viksne. Lyman Judson, head of the Public Relations Department at Ripon College, comes to the Ripon chapter from Kalamazoo College. Mr. Judson holds a degree of special distinction.

Ripon this year has journeyed to tournaments at University of Wisconsin at Milwaukee, Oshkosh State College, University of Wisconsin, University of Illinois at Chicago, and Eau Claire State College. A superior award to the team of the Misses Tostrud and Viksne at the freshman-sophomore tournament at University of Illinois has been the highest award captured by the debaters this season.

The remaining year's itinerary includes meets at University of Wisconsin and Pi Kappa Delta Province meet. Ripon College, itself, will sponsor the fifty-year old James Contest, yearly oratorical competition.

Future activities confined to the campus will include the initiation of an honorary member, all school convocation program featuring a debate with a guest school, and acting as co-host with the college speech department to the National Forensic League state finals in individual events to be held in April.

SEATTLE PACIFIC COLLEGE

Washington Beta Chapter of Pi Kappa Delta held its annual initiation on June 1, 1957. Beth Allen, Shirley Brown, Mary Alice Caton, Geneva Ensign, Marvin Mayhle, Carol Modin, Harvey Taylor, Ewing Stringfellow, Eunice Vordahl, and Roger Wilder were initiated in the impressive candle light ceremony. Dr. Philip Ashton, Dean of Seattle Pacific College, was received as an honorary member. We were privileged to have Dr. Charles T. Battin as a speaker for the evening.

The Seattle Pacific College Chapter's new president, Mary Alice Caton, met several times during the summer with her officers, Shirley Brown and Geneva Ensign, to plan for the coming year. Pi Kappa Delta worked in close cooperation with Roger Wilder, Forensic Director, Professors Paul Rosser and Glyndon Riley,

advisors, and Alan Thompson, president of Forensic Club on our intramural forensic program. Finalists were heard during the Breakfast meetings of the Forensic Club.

The Forensic Club and Beta Chapter sponsored a booth for the All-Campus Carnival and received one of the top honors for the booth. It was later displayed for open house.

We were well represented in the first tournament of the year, held at Pacific Lutheran College. Carl Sandburg received a first place in impromptu, and a third place in extemp. Shirley Brown received a first place in impromptu. George Kupfer received a third place in impromptu and extemp. Mary Alice Caton received a second place in Impromptu. Carol Modin received a third place in oratory and tied with Shirley Brown for third place in Interpretative reading. Carl Sandburg and Mickey Lind placed second in debate.

Carol Modin, Shirley Brown, Mary Alice Caton, Beth Allen, George Kupfer, Carl Sandburg, Bruce McCartney, and Harvey Taylor represented the College at the Western Speech Association Tournament in Los Angeles. Five of our members received certificates for final rounds. Shirley Brown received one in interpretative reading and in debate. Carol Modin received hers in debate. Carl Sandburg received one in extemp and also in impromptu. George Kupfer received his in impromptu as well.

Shirley Brown and Beth Allen accompanied the chapter advisors to the convention at Santa Barbara and returned with enthusiastic reports of the meetings they attended.

Washington Beta Chapter and Forensics Club co-sponsored an enjoyable Christmas party held at the home of Paul Rosser the second week in December. The Chapter is in the midst of helping with the administration of the two tournaments held for colleges and high schools in January.

The group is busy preparing for future tournaments. Plans are underway to have a bulletin published for Alumni members of the chapter. A weekend retreat is being planned in the near future for all forensic members.

SOUTHERN ILLINOIS UNIVERSITY

A year ago debaters from Southern Illinois University established a squad record for championship trophies winning first place awards in the following debate tournaments: Northwestern University, Southwestern College at Winfield, Kansas, Millsap College at Jackson Mississippi (senior men's division), Emporia State College at Emporia Kansas, and the Illinois State Tournament (tie). In addition, the SIU team of Joe Selement and Richard Rieke qualified for the West Point National Tournament.

Using first year debaters for the most part, the SIU squad has maintained a better than 70 percent record for the current season. The longest winning streak of the season was compiled by the varsity women's team of Regina Miller and Marsha Wiehn who won 15 consecutive debates. The SIU coeds won the championship trophy in the women's division at the Millsap tournament. They were awarded the second place trophy at the Pittsburg, Kansas tournament and reached the semi-finals at Central State College in Edmond, Oklahoma. They were undefeated both at the Purdue Forensics Conference and at Millsap.

The varsity men's team of Ted Foster and Ray Canterbury has maintained a strong winning percentage with 18 victories in 23 debates. At the Northwestern University Owen Coon Tournament, Foster was the second highest ranking debater. Foster and Canterbury reached the quarter-final round in the tournament. Keith Sanders and Richard Hunsaker compiled a record of 12 victories in 13 debates while Kent Brandon and Gary Bengston has won 15 debates while losing 4. Undefeated in one tournament this season, the team of Robert Holton and Peter Morris has won 8 out of 10 debates. For the second straight year, SIU debaters won 11 out of 12 debates at the Kirksville, Missouri, tournament.

Future prospects for SIU debating are indicated in the achievements of four first year women debaters. The team of Jan Fegley and Dede Lingle has won 10 out of 13 debates while Karen Hanagan and Gailverne Kopp have won 6 out of 9.

Illinois Upsilon PKD members were hosts to a high school speech Festival Jan-

uary 18 and to a high school debate tournament January 25. Thirty teams, a record number, participated in the debate contests.

SOUTHERN STATE TEACHERS COLLEGE, SOUTH DAKOTA

The South Dakota Kappa Chapter has had a busy season thus far. In December the chapter sponsored a declamation meet for the second place winners of local high school contests. This contest was held on the campus of Southern State Teachers College.

Ben Maas, E. V. Anderson, Robert Parlet, and Aaron Armfield were initiated as members of Pi Kappa Delta in a ceremony held January 22, 1958. Dean Lee DeBoer, a member of the college staff, was made an honorary member of the chapter. This was the first initiation ceremony held by the chapter since its activation in January of 1957.

The chapter sponsored a Little "8" Debate Tournament on February 10th and 11th. High schools from the surrounding area competed in oratory, extemporaneous speaking, and debate. Members of the chapter, directed by Professor Milo J. Wepking, faculty sponsor, judged all events of the tourney.

The chapter has been represented at tournaments in Wichita, Kansas, Sioux Falls College in South Dakota, the University of South Dakota, Winfield, Kansas, and the Rocky Mountain Invitational Speech Tournament sponsored by Denver University.

Chapter officers for the 1957-58 school year are: Maurice W. Wintersteen, president; Don Roberts, vice president, and Larry Grimme, corresponding secretary.

SOUTHWESTERN KANSAS COLLEGE

Southwestern College is currently in the midst of a busy forensics season during which it has thus far attended twelve tournaments and plans to attend at least eight others. Season's highlights to date have been: The Southwestern squad secured superior sweepstakes awards in both junior men's and junior women's divisions at the East Central tournament; John Prather won the first place trophy for extemp

at the Wichita tournament and later repeated his feat in the junior men's division at Baylor; the junior women's team of Alice Arnall and Sandra Focht placed third in their division at the Baylor tournament, while Sandra Focht combined with Tonnie Martin for the only undefeated team in the junior division at the William Jewell tournament; at the McPherson tournament, John Prather teamed with Carl Martin and Alice Arnall with Don Mohlstrom to form two of the undefeated teams at the tournament; at the recent tournament at Northwestern University, Southwestern's two teams each had records of four wins and two losses.

Of unusual interest to the Southwestern chapter this year was their own tournament, which was probably the largest ever held on the campus. Fifty-two colleges and universities from fourteen states sent entries, with schools as far apart as Dartmouth, Redlands, Alabama, and St. Olaf attending. Senior college sweepstakes were won by Southwest Missouri State and junior college sweepstakes by Hutchinson Junior College, while in debate Augustana (Illinois) took both first and second in Senior men's, Hardin-Simmons defeated the University of Nebraska to place first in women's, and Abilene Christian defeated the University of Oklahoma for first place in junior men's.

STERLING COLLEGE

Kansas Lambda chapter announces the pledging of five students, and expects to pledge several others late in the season. Forensics at Sterling College are active. Alan Stancliffe and Richard Rohrbaugh placed second and third, respectively, in men's extemp speaking at the Rocky Mountain Tournament at the University of Denver. As a debate team they won four out of six debates.

In oratory Sterling enters the state WCTU contest next month as well as the oratorical contest sponsored by the University of Kansas. Ahead lie tournaments at Emporia State, the University of Nebraska, St. John's of Winfield and the Province of the Plains convention at the University of Omaha in April.

TENNESSEE POLYTECHNIC INSTITUTE

Tennessee Delta Chapter started the school year right by making immediate plans for participation in several tournaments.

On November 7-9 Tennessee Tech debaters journeyed south to the Alabama Discussion Tournament. Then on November 16, they moved north to the Western Kentucky Debate Tournament. From this tournament one team returned with runners-up honors and another team turned in a record of three wins out of three rounds of debate. This tournament was judged on basis of points awarded rather than on number of wins.

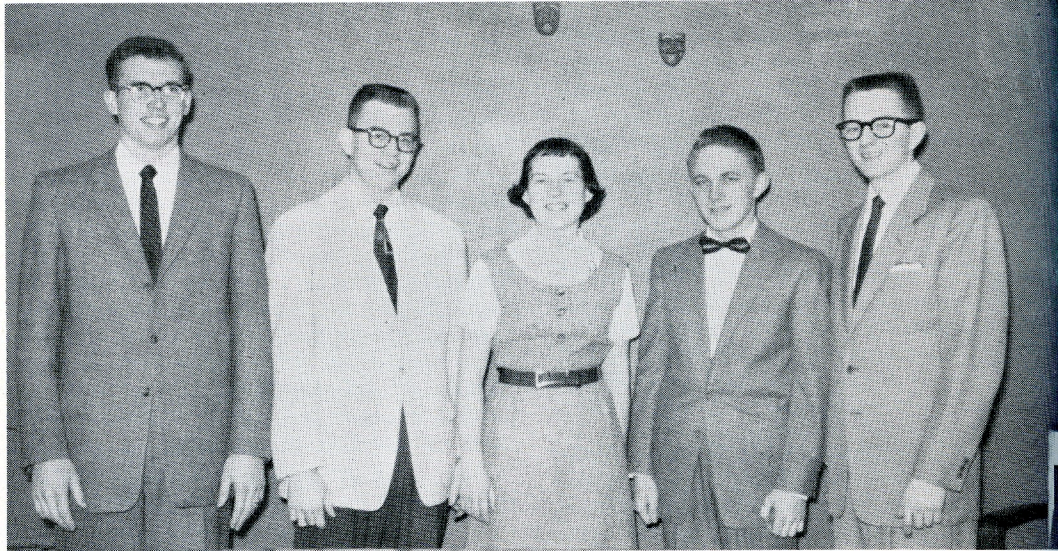
The second quarter started with a tournament fast on the heels of registration. This was an experimental tournament at Middle Tennessee State College in which experienced debaters participated as judges. Tech had three Pi Kappa Delta members judging and four Pi Kappa Delta members debating. The Tennessee Tech squad won runners-up honors in this tournament also.

The debate season is just getting under way at Tech, though. The rest of this quarter and spring quarter will see action in the Agnes Scott Invitational Tournament, the Tennessee State Tournament, the West Georgia Invitational Tournament, the Smoky Mountain Invitational Tournament, the Magnolia Tournament, and the Pi Kappa Delta Provincial Tournament.

TEXAS CHRISTIAN UNIVERSITY

Texas Christian University suffers at the loss of Dr. E. L. Pross. Mr. David Matheny of Emporia, Kansas, came to be coach before Dr. Pross died. Fourteen people have represented T.C.U. in inter-collegiate debates this year, with eight freshmen qualifying for membership in Pi Kappa Delta.

Teams have attended the following tournaments: Practice Tournament at T.C.U., S.M.U. Tournament at Dallas, Texas, Central State College at Edmond, Oklahoma, Southwestern College at Winfield, Kansas, Amarillo College, at Amarillo, Texas; Baylor University at Waco,



Sterling College debaters: Left to right, Stan Vandersall, Pete Kinyon, Marilyn Hawvermale, Richard Stewart and George Mastick.

Texas; Mid-South at Arkadelphia, Arkansas; Emporia State Forensic at Emporia, Kansas.

The squad has reached the semi-finals at Amarillo, Texas; Waco, Texas, and Emporia, Kansas, and taken a second place at the Mid-South Tournament. Other teams have reached the quarter-finals at the Mid-South Tournament and Emporia. The squad took second in Senior Sweepstakes at Emporia. T.C.U. has taken first in Oratory at every tournament attended but one. Bobby Patton won first at S.M.U. and Ken Connolly has won first at Amarillo, Baylor, Southwestern College and Emporia. Connolly took second at Edmond, and also won Senior Men's Extemp at Emporia. Tournaments to be attended in the future are at Texas University, Durant, Oklahoma, and Stephen F. Austin College and the Southwestern Conference in addition to the P.K.D. regional at Searcy, Arkansas.

T.C.U. will host a high school tournament on March 27 and 28. Also a campus oratorical contest in May.

UNIVERSITY OF ILLINOIS, CHICAGO

The Illinois Psi Chapter began the 1957-1958 academic year with six active members. Richard Mora is president of the chapter. The major project during the

first semester was to stimulate interest in the forensic program. The group operated a booth at the freshman mixer and later had a booth in the front foyer of the main building. Speeches to freshmen English classes also were part of the recruitment program.

Twenty-two students participated in the annual intramural tournament. Joel Silverstein and Nick Beeler were the only undefeated team in four rounds. On the basis of individual ratings, Martin Farrell won the Insalata Debate Award, given this year for the first time.

In the fall of 1957 the team participated in three tournaments and, although the most inexperienced group in the last ten years at UIC, managed to split forty-eight decisions. Beeler attained a rating of special distinction in the UIC Freshman-Sophomore Tournament for the top individual performance.

The group sponsored four public forums on campus during the first semester. A split-team debate on the question of school segregation opened the series, a symposium on earth satellites and missiles continued the sequence, and a discussion and a debate on the national topics completed the work for the first semester.

UIC is sponsoring four events for colleges and high schools during the year. In

November a high school tournament for parochial schools and in January a tournament for public schools were services to students at the secondary level. Professors Matthew Rigler and Carl Pitt, both PKD members, were in charge of these events respectively. Joe Wenzel, still another PKD member and this year the assistant director of forensics, gave substantial help to Mr. Rigler.

Dr. Thompson, chapter sponsor, is in charge once more of the Seventh Annual National Contest in Public Discussion, which he originated. Results will not be available until April.

The Tenth Annual UIC Freshman-Sophomore Debate Tournament was held on December 14 with 46 units from 38 colleges in eight states. Three teams were undefeated with 8-0 records. The tie was broken on speakers' points with first place going to Butler, second to Notre Dame, and third to the University of Kentucky.

UNIVERSITY OF REDLANDS

With the addition of ten new members this year, the Pi Kappa Delta total now stands at thirty-two. The two new graduate assistants to Dr. Moulton, Director of Forensics, are also Pi Kap members. These are Wayne Hall, Special Distinction from Marietta College, and Ray Ford, Special Distinction from Pepperdine College.

The group has been quite busy this year attending tournaments at El Camino Junior College, Los Angeles City College, Pepperdine College, University of Southern California, and Southwestern College in Winfield, Kansas. The squad was undefeated at El Camino, won sweepstakes championships at Pepperdine and USC, and placed western tournament. Future plans include third out of fifty-four teams at the Southtrips to UCLA, Texas, Pomona, Santa Barbara, Claremont, Pasadena, Occidental, and the Pi Kap province meet at Arizona State.

Pi Kappa Delta friends as well as the Redlands squad will be sorry to note that Dr. E. R. Nichols, long-time Redlands forensic director and Pi Kappa Delta founder, recently suffered a heart attack at his home in Redlands. No doubt Dr. Nichols would appreciate a card from some of his many friends in Pi Kappa Delta. His address is 814 Campus Avenue.

WHEATON COLLEGE

Wheaton College has participated in nine tournaments thus far this year. They won first place in the Greenville Invitational Tournament and were the first place affirmative team in the Pitt Cross-Examination Tournament. Don Barrett was voted one of the first five speakers in that tournament. Wheaton also tied for first in the Eastern Illinois Invitational. In addition to these they entered tournaments at Bradley, Illinois Normal, Northwestern, Purdue, Eau Claire and the Illinois Oratorical Association meet. Wheaton has also participated each weekend in the Chicago Area Series in cooperation with a half dozen schools in the area.

WISCONSIN STATE, EAU CLAIRE

Wisconsin Zeta at Eau Claire has finished a first semester of busy forensic activity.

On October 26, 1957 a discussion clinic was held. Two hundred high school students participated in three rounds of discussion in which college students acted as leaders. At the general convocation, the college debate squad debated on the national high school debate question. The other October activity was the Seventh International Debate with Cambridge. A large audience attended this first number of the forensic series.

In November, 28 Eau Claireites participated in the Bradley Speech Tournament. Winning fourteen out of sixteen debates in which they participated, the squad also came home with 10 superiors, and 23 excellents. Four members of the squad attended the University of South Dakota at Vermillion where Charlie Bush was the only discussion participant who received the highest possible rating every round of the tournament. There were 72 participants.

In December, the freshman-sophomore debaters went to the University of Minnesota at Duluth where Kathy Kidd and Sally Cull were the only undefeated debate teams. At the University of Illinois, Navy Pier, Sally Cull and Charlie Bush were undefeated with Sally receiving a superior award and Charlie and Mr. Ungerite of Indiana State Teachers College constituted



Registration desk at Oshkosh State College's first debate tournament. Left to right, Ted R. Jackson, OSC speech instructor and assistant debate coach; Alice Sucharda, treasurer, Wisconsin Gamma; Forest A. Roberts, debate coach, Northern Michigan College of Education; Fred Phelps, debate coach, St. Olaf College; Tom Olbricht, debate coach, University of Dubuque; Norieta Procknow, OSC debater.

the two top scorers at the tourney. The 1957 activities culminated with the annual Christmas reunion for Pi Kappa Delta which was held at the home of Miss Grace Walsh.

In January, the Fourteenth Interstate Debate Tournament for high schools was held. One hundred and forty teams from Minnesota and Wisconsin participated. On January 18, the annual "B" tourney at River Falls, where eligibility is limited to not more than three previous tournaments in the event in which the student is participating, Charles Bush won the championship in after-dinner speaking and the debaters broke a long record of 50 percent or better by winning nine and losing eleven debates.

Semester concluded with busy plans for the Fourteenth Annual Speech Meet which was scheduled for February 13, 14 and 15. Entries from eleven states are expected and Wheaton College has the distinction of being the first school to register.

WISCONSIN STATE, OSHKOSH

Seventeen students became charter members of the Wisconsin Gamma chapter of PKD when it was initiated on May 18, 1957. Initiating officer was Professor Grace Walsh of Wisconsin State College, Eau Claire.

On November 8-9, the local chapter sponsored the first debate tournament ever held at OSC. Eight schools from five states attended the tournament. Northwestern University won first place defeating Marquette University in the championship round. OSC finished with the third best record.

Gale Sievers of OSC was among the top ten debaters in the tournament on individual ratings.

Twenty-five students participated in seven debate tournaments during the fall semester. Eight tournaments have been scheduled for the spring semester.

The OSC chapter will be host for the District Forensic Tournament of the Wisconsin High School Forensic Association on March 29.

PRICE LIST

Revised September 1956

Prices include all taxes and handling charges.

Degree	Miniature (with pin)	Small (lavalier)	Large (fob)
DEBATE (Pearl)			
Fraternity (Ruby)	\$ 5.00	\$ 5.60	\$ 6.70
Proficiency (Amethyst)	5.00	5.60	6.70
Honor (Emerald)	5.60	6.15	7.25
Special Distinction	8.20	10.35	13.75
(Diamond)			
ORATORY (Ruby)			
Fraternity	\$ 5.85	\$ 6.40	\$ 7.55
Proficiency	5.85	6.40	7.55
Honor	6.40	7.00	8.10
Special Distinction	8.95	11.20	14.55
TWO ORDERS (Turquoise)			
Fraternity	\$ 5.85	\$ 6.40	\$ 7.55
Proficiency	5.85	6.40	7.55
Honor	6.40	6.95	8.10
Special Distinction	8.95	11.20	14.55
THREE ORDERS (Diamond)			
Fraternity	\$ 8.95	\$ 11.20	\$ 14.55
Proficiency	8.95	11.20	14.55
Honor	9.50	11.75	15.10
Special Distinction	12.03	15.98	21.53
INSTRUCTION (Emerald)			
Fraternity	\$ 6.40	\$ 6.95	\$ 8.10
Proficiency	6.40	6.95	8.10
Honor	6.95	7.55	8.65
Special Distinction	9.50	11.75	15.10
HONORARY (Sapphire)			
Fraternity	\$ 5.85	\$ 6.40	\$ 7.55
Proficiency	5.85	6.40	7.55
Honor	6.40	6.95	8.10
Special Distinction	8.95	11.20	14.55

SPECIAL CHARGES

For Pin attachment on large and small sizes add \$1.15.

For white gold (special distinction only) add \$1.15.

Guard chain with gold initial pin (chapter Greek letter) add \$1.70.

Charge for changing jewels in old keys, 50 cents.

Allowances: Gold in yellow gold keys exchanged for white gold large and small keys; \$1.50 Miniature; \$1.00.
Full value will be allowed on rubies, sapphires, and turquoises and emeralds exchanged for new jewels or white gold key.

Handling charge for changing jewels in old keys, 50 cents.

Address all key orders to the National Secretary:

D. J. Nabors
East Central College
Ada, Oklahoma

In This Issue

MARCH, 1958

OUR COVER—

We are pleased to present on this issue's cover a picture of Theodore Nelson and S. R. Toussaint. Nelson, immediate past president, is head of the speech department at St. Olaf College. The shot was taken when he taught in a summer session at Colorado State College of Education where Toussaint, formerly national secretary-treasurer of PKD, is a professor.

Paid Haters of Debate	67
Chapter Directory	68 - 87 - 88
Materialism — The Cancer of our Society	69
Themis, The Goddess of Justice	71
Meet Your Governors	73
President's Letter	75
Meet Your National Council	76
Chapter Notes	77
Keys	95