

follows: Edward Betz, Vice-President; Wilbur Moore, Sherod Collins, and Cunera Van Emmerik, Council Members.

The roll was called and a ballot given to each delegation. Eighty-eight chapters were represented. After the votes were counted, the chairman announced that Edward Betz had been elected president and Sherod J. Collins, vice-president. The name of G. W. Finley for secretary-treasurer for two years was presented to the assembly and he was elected.

Miss Van Emmerik gave the following report for the charter committee:

Report of the Charter Committee

First of all the committee would like to thank the members of the National Council, the provincial governors, and others who have helped by giving information and in other ways.

Since 1942 the committee has received seventeen petitions for charters. The attitude of petitioning schools showed an eagerness for membership in Pi Kappa Delta even in years of curtailed activities.

Since there has been a long interval between national tournaments, it seems wise to review the standards upon which charters are granted in Pi Kappa Delta. (Here Miss Van Emmerik read the standards.)

Now concerning the seventeen petitions received during the past five years.

Two of them were not considered because the institutions were not members of the North Central Association or its regional equivalent. One of them was not considered because it was not a four-year school. One of them withdrew to revive its chapter of Delta Sigma Rho. One failed to get the approval of the province of which it would logically have been a member if accepted.

Seven of them were accepted by referendum. Five of these had chapters installed.

The State College of Washington, Pullman, Washington.

Whitewater Teachers College, Whitewater, Wisconsin.

Drury College, Springfield, Missouri.

Lewiston State Normal, Lewiston, Idaho, now Northern Idaho College of Education.

Louisiana Polytechnic, Ruston, Louisiana.

In the other two the referendum was completed so late that chapters have not yet been installed.

University of South Carolina, Columbia, South Carolina.

University of Georgia, Athens, Georgia.

The four other petitions are being acted upon at this tournament. Further report on them will be made at our next business meeting.

R. D. MAHAFFEY,

ROY D. MURPHY,

CUNERA VAN EMMERIK, Chairman.

Mr. Battin, chairman of constitution revision committee, presented an amendment to Article 5, Division C, Section 2, recommending that all of the paragraph be deleted after the word "instruction." Mr. Battin explained that this was an attempt to correct a contradiction in regard to the election of Council members. Moved by Mr. Betz that the amendment be adopted. Carried. Also in Article 5, Division C, Section 2, paragraph 3, the words "or more" be inserted after the word "five." Adopted.

Mr. O'Connell asked that delegates wear their badges to all meals and eat at the place to which they were assigned. The announcement of the rooms for meetings of the provinces at the close of the business session was made.

Adjournment.

THIRD BUSINESS SESSION, FRIDAY MORNING

APRIL 11, 9:00 A.M.

The chairman of the nominating committee presented the names of five candidates for the National Council. The convention was to elect three from this list:

Cunera Van Emmerik, Central College, Iowa.

Evelyn Kenesson, Bowling Green State University, Ohio.

Dana T. Burns, Baldwin-Wallace College, Berea, Ohio.

E. O. Wood, Louisiana College, Pineville, La.

Roy D. Mahaffey, Linfield College, Linfield, Oregon.

The roll was called and each delegation was given a ballot containing the names of these candidates.

Mr. Battin, constitutional revision chairman, continued with his report on constitution amendments.

An amendment was offered making the term of office of the editor of THE FORENSIC four years without the privilege of re-election. Carried.

The name of Dr. Wilbur Moore, Central State College of Education, Michigan, was submitted by the National Council and he was elected.

After much debate on constitutional amendments, it was voted that hereafter all proposed amendments should be printed and sent to the chapters for careful study before a convention.

The committee recommended that the requirements for membership be changed from three decision debates to six decision debates. Dr. Holmes moved that this matter be submitted to the chapters for a referendum vote. Carried.

The section on fees, page 10, was amended to eliminate the payment of fees for Honorary Members.

Other changes made in the constitution will be printed later.

Maurice Hess presented the following report:

Report of the Committee on Resolutions

The Fifteenth National Convention of Pi Kappa Delta, National Forensic Honor Society, whose biennial meetings were interrupted by the circumstance of war, has assembled after the cessation of hostilities in a period hopefully striving to remove the destructive scars of war and establish permanent peace.

To Bowling Green State University, and its President, Dr. Frank J. Prout, the trustees, faculty, students, and employees our sincere thanks are due for graciously offering for our use the excellent facilities of the institution for lodging, meals, contest rooms, and recreation, and for assistance in judging and serving as chairmen and timekeepers. Especially do we express our thanks to the staffs of the various dormitories and sorority houses, the Library, Swimming Pool, Hospital, Falcon's Nest, and other dining halls, as well as the University Club and Women's Club, who sacrificed an Easter vacation for our comfort.

The Fifteenth National Convention of Pi Kappa Delta, National Forensic Honor Society, whose biennial meetings were interrupted by the circumstance of war, has assembled after the cessation of hostilities in a period hopefully striving to remove the destructive scars of war and establish permanent peace.

To Bowling Green State University, and its President, Dr. Frank J. Prout, the trustees, faculty, students, and employees our sincere thanks are due for graciously offering for our use the excellent facilities of the institution for lodging, meals, contest rooms, and recreation, and for assistance in judging and serving as chairmen and timekeepers. Especially do we express our thanks to the staffs of the various dormitories and sorority houses, the Library, Swimming Pool, Hospital, Falcon's Nest, and other dining halls, as well as the University Club and Women's Club who sacrificed an Easter vacation for our comfort.

Our thanks are particularly due to the local Eta Chapter at Bowling Green, and its President, Betty Ruth Krabill, and Dr. Evelyn Kenesson, Director of Forensics and Local Chairman, and other members of the Speech Staff for their long hours spent in planning the many details for our comfort and the smooth functioning of an effective Convention. With them we include Governor Dana T. Burns of the Province of the Lakes, Convention Arrangements Chairman W. V. O'Connell, and all chairmen and committee members serving the Convention and its contests, as well as Student Representatives on the National Council, Bob Parkins, and particularly Miss Glenna Smith, upon whom fell the major responsibility for organizing and managing Stunt Night with the help of her capable assistant, Willard Staub.

Generous publicity for the Convention was furnished by the Bowling Green *Sentinel-Tribune* and the *Toledo Blade*. We also appreciate the co-

operation of Radio Stations WFIN at Findlay and WTOL at Toledo in providing a place for programs arranged by Dr. Alfred Westfall, who for fifteen years has served capably as Editor of *THE FORENSIC* and has provided a welcome medium for unifying the activities of our numerous local chapters which are spread over an extensive territory.

We are under distinct obligation to our President, Martin J. Holcomb, who succeeded to the office after military duties deprived us of the services of our capable and highly respected President, Glenn R. Capp. President Holcomb performed efficiently his duties in a time made difficult by the disruption of collegiate activities, and for a term lengthened by restrictions which prevented a National Convention since 1942. His efforts were ably seconded by Vice-President Edward S. Betz and Council Members Wilbur E. Moore, Cunera Van Emmerik, and S. J. Collins and Past President W. V. O'Connell.

Special mention needs to be made of our beloved Secretary-Treasurer, George W. Finley, for his nearly a quarter of a century of devoted and efficient service to our fraternity. His meticulous knowledge of details and his unusual tact have given continuity to the changing administrations. Some of us have learned to love him as a father; all of us greatly regret his inability to be present in person with us at the Convention. It would be ingratitude on our part if we did not express our appreciation to his wife, Mrs. Dora Finley, and his daughter, Mrs. Nona Voris, who cared so courteously for the Convention duties of his office in his absence.

We pause in silent tribute to the memory of those members of our fraternity whose lives were sacrificed in the great catastrophe of a world war; and we remember those who now suffer from impaired health because of the things which they endured. For making possible the impressive Memorial Service on Sunday evening we express our appreciation to the Choir of the First Christian Church and its Director, Organist, and Soloists, to Wood County Auxiliary 45, American Legion Post, to Professor Guy Eugene Oliver for his impressive address, and to all others who contributed to the service.

We reaffirm our faith in the ideals of democracy, and its handmaiden, freedom of speech. We believe that sane, factual, and logical discussion of disputed issues, local, national, and international, is the most effective antidote at hand in coping with the "isms" which threaten our American way of life. To this end we recommend effective support to the basic principles of the United Nations, an organization not yet perfect, in order that it may develop toward perfection. We pledge ourselves to be tolerant of honest differences of opinion but to be guided in our actions by a fearless adherence to the truth. We plead that capital and labor have due regard for the rights of each other to the end that the general good of all may supplant selfish advantage.

Grateful to Almighty God, who has made and preserved us a nation favored far above many of our fellows, we pledge ourselves to use and develop the power of speech which has been given to us in such a way that our fellowmen in any part of the world may say of us that we regard the art of persuasion as both beautiful and just.

Respectfully submitted,

MAURICE A. HESS,

Chairman, Kansas Omicron,
McPherson College.

E. R. NICHOLS,

California Alpha,
University of Redlands.

Miss Van Emmerik reported for the charter committee that the petitions for charters from Spring Hill College and the Texas College of Arts and Industries were being voted upon by the chapters of their respective provinces and that later they would be voted upon by all the chapters in a referendum.

Greetings to the convention from Alma and S. R. Toussaint, Greeley, Colorado, and Louise Byrns, Commerce, Texas, were read.

Report of the nominating committee was made by D. J. Nabors announcing the election of E. O. Wood, R. D. Mahaffey, and Evelyn Kenesson to the National Council.

George Pflaum discussed the initiation ritual and moved that the President and Council select a committee for its revision. Carried.

President-Elect Edward Betz called a meeting of the newly elected Council for 1:30 p.m. Friday.

Convention adjourned.

CONVENTION NEWS

The convention had its daily newspaper, a mimeographed sheet issued each morning. The following items appeared in it.

One coach, Harold Schory, had to be rescued from his room on the third floor of the Alpha Xi Delta sorority when the lock caught. He escaped a judging assignment. Tom Houston drew a roommate who snored, asked for a second assignment, and got a second snoring coach. There were two blind students. Richard Schrempf, Augustana, Illinois, was in the discussion contest. Gene Cole, Carson-Newton, debated. The traveling championship went to Prof. Roy Mahaffey and his Linfield debaters. From Oregon they went to Los Angeles, El Paso, with a side trip into Mexico, New Orleans, Baton Rouge, spent a week in New York City, four days in Washington, D. C., took in the Grand National tournament at Fredericksburg, Virginia, and spent a day in Chicago on

the way home after the convention. All in all they were on the road more than four weeks and traveled over 9,000 miles.

Two additional congressmen were turned up at the convention. The Convention Booklet had listed Francis Case and Karl E. Mundt of South Dakota, and Alvin E. O'Konski of Wisconsin. To that list were added George Mahon of Texas, a member of the Theta chapter at Hardin-Simmons, and Albert L. Reeves of Missouri. Congressman Reeves is an alumnus of William Jewell who used to coach forensics at Mary Hardin-Baylor. He is the man who defeated the man that President Truman and the Pendergast machine used to eliminate the Democrat that the President said was wrong.

Among the interesting people attending the convention were National Founder E. R. Nichols, Redlands, California, and Mrs. Nichols. Professor Nichols has attended almost every convention, but it was the first time for his wife. William Youngdahl, the son of the Minnesota governor, represented Gustavus Adolphus. Alfred Rambochand, who represented Macalester, is a native of British Guiana. And then there was Harold Howard who saw the convention from the hospital. He waited until he got to Bowling Green to break out with chicken pox. He recovered just in time to start back the day after. There was the interesting father and daughter combination of Prof. W. A. Stephenson and Etta Jane of Hardin-Simmons.

Canada was less than a hundred miles away. Some of the delegates made a flying trip across the border. When they returned they had to make their customs' declarations to a guard who was a former Morningside debater.

When Barbara Stapleton, Baldwin-Wallace, reached Bowling Green, she learned that Beverly Prue, her debate colleague, who had gone to her home in Pennsylvania for spring vacation, had been cut off by high water. Of course that dropped the team from the tournament, because there cannot be a one-man team in a woman's debate tournament. After starting time for the first round, she learned that Gerry Webb, of George Pepperdine College, Los Angeles, who had come for some of the other events, was also a debater. Gerry was spending the afternoon in the swimming pool, but she was pulled out, dried off, and put on the platform with Barbara. The obliging judge, Dr. L. C. McNabb, Millikin University, agreed to hear the debate at a later hour. The Ohio and California girls had not met until debate time. "I was impressed by the team work of the young ladies," reported Dr. McNabb. "Their cases fitted together very logically. Forensic certainly develops versatility." Although they were not officially entered in the tournament, the girls won six of their eight debates.

Student stunt night was a grand success. Tied for first were Thelma Hokey and Barbara Hansard, duet from East Central State College, Ada,

Oklahoma, and Floyd Clark, Michigan State College, with his reading, "The Unhealthy Ways of the People in the Bronx." Right behind them was another tie, awarded honorable mention: Lloyd Gaddis, the boogie-woogie piano player from College of Puget Sound, Tacoma, Washington, and Melvin Steinbron, the slide trombonist from River Falls State Teachers, Wisconsin.

Seven other schools also presented numbers: Gene Cole, the blind singer from Carson-Newman, Tennessee; Howard Privatt and Malkam Sillars, George Pepperdine College, California, presenting a take-off on debate; Mary Scherick, Central State College of Education, Michigan, "The Slave Dance"; Carl Fisher and Bill Shinn, Northeast Missouri State Teachers, Kirksville, "The Radio Commercials"; Ronald Kern, Dick Conn, Betty Ruth Krabill, Clyde Schultz, and Bud Gruene, Bowling Green, a take-off on debate; Doris Carlberg, Margie McAllister, Harold Brack, Evangeline Erickson, John Swenson, and David Lorenz, "The Cellar Stairs," representing Augustana, Illinois; John Baird, College of the Pacific, vocal solo. These were the survivors from an original field of eighteen entries.

Great credit should be given the student representatives on the National Council, Glenna Smith and Will Straub, both of Bowling Green. Mention should also be made of Bob Parkins, Kearney State Teachers, Nebraska. Bob was originally elected to the National Council and did some of the preliminary work in preparing for "stunt night." Shortly before the convention he had to go to the hospital for a sinus operation. Will Straub was appointed to carry on in his place. He was certainly a happy selection for M. C., and handled the microphone like a veteran who had been hanging around a lot of night clubs.

The Informal Mixer

The convention delegates were guests Monday night of the Province of the Lakes at an informal mixer. Arrangements had been in the hands of Dana T. Burns, Governor of the Province; Glenna Smith, and Will Straub, student representatives on the National Council.

Howard Leabee mixed us up! We learned that there was really no North, no South, no East, no West; just the United States and Texas!

After enjoying the refreshments prepared by Elsie Lodge and Dorothy Anderson, we were thoroughly entertained with Ronald Kern's readings and the floor show, featuring Jay Cherry, Dick Price, and Ivan Szekely, the piano playing chemistry professor.

The Convention Dance

Hearts are always young and gay when youth and pleasure meet to chase the glowing hours with flying feet. The semi-formal convention

dance Thursday evening, another courtesy of the Province of the Lakes, was a delight, from decorations to orchestra. The red and white of Pi Kappa Delta dominating the decor, made the hall bright and gay. "Soft eyes looked love to eyes which spoke again and all went merry as a wedding bell." Or also as merry. Some of the old hoofers, who perhaps remembered when they could whisper a tale in a lady's ear, found that the old dogs did not shuffle as lightly as they once did. But the girls looked lovely.

THANKS TO THE JUDGES

I wish to take this opportunity to again thank each and every judge for the splendid co-operation which we had in the judging program. My experience in the past with this type of thing does not give me a measuring stick for comparison, but I am mighty sure that in no case have we had finer co-operation. I am not sure what suggestions I should make as to reporting the judging situation for future contests. It seems to me the conscientious effort on the part of the coaches and the local committeemen in charge of the local judges is the main factor in making for a successful contest. I am sure the general arrangements at Bowling Green were of great assistance in making it possible to have judges at the right place and at the right time.

Favorable comments were made regarding the card that was given to each judge, which makes me believe it is definitely worthwhile and I, therefore, recommend some system of informing the judge as to the time he is to work, as being a favorable permanent procedure.

In closing may I again say thanks to all the judges and to the contest committees in general for their splendid co-operation.

SHEROD J. COLLINS,
Chairman Committee on Judges.

ON THE SUBJECT OF SUBJECTS

(Continued from page 93)

unable to make "direct share" less ambiguous without framing a less debatable question. But Congress and the country are deeply disturbed over labor-management relations. We who coach debate could answer proudly when our colleagues in the social sciences asked what our debaters were studying.

But next year? Mounting tension divides the two great world powers in Greece, Turkey, China, Korea, Germany, Austria, Trieste. Rumors spread of a Russian atomic bomb. Five million unemployed walk the streets. "And what's your topic this year?" "We're debating reduction of the national debt." If our debaters and orators are not concerned with the most vital national and international questions of our day, then who is?

Discussion Ratings

College	Participant	Round I	Round II	Round III	Round IV	
1. Wm. Jewell—J. C. Ballinger	1	1 2 2 1	1 2 1 1 1	1 1 1 2 1	3 3 1 1 3	30 Sup.
2. Wm. Jewell—James Jenkins	1	2 4 1 2	2 2 1 1 3	1 1 1 1 1	1 1 1 2 1	30 Sup.
3. Coe—James Lambert	4	2 1 1 1	1 2 2 1 1	2 1 2 2 2	1 1 1 3 1	32 Sup.
4. Eureka—John Brinkley	3	1 3 4 1	2 1 1 1 1	1 3 1 1 3	1 2 2 2 1	35 Sup.
5. Iowa Coll.—H. Hunderup	2	1 1 1 3	2 2 2 3 3	2 3 2 1 3	1 1 1 1 1	35 Sup.
6. Doane—James Ross	2	3 2 1 2	4 1 1 1 3	2 1 1 1 1	2 2 4 1 1	36 Sup.
7. Otterbein—James Tressler	2	1 3 1 1	1 1 1 1 2	3 4 4 2 1	1 1 1 4 1	36 Sup.
8. Ada—Barbara Hansard	1	3 2 2 2	1 1 3 2 2	1 3 4 1 1	1 1 3 2 1	37 Exc.
9. Yankton—E. Christensen	1	2 2 4 2	2 1 2 1 2	1 1 3 1 3	1 1 4 1 2	37 Exc.
10. Yankton—Winfrid Liepe	4	1 2 3 4	4 1 4 1 1	1 1 1 1 1	1 2 2 1 1	37 Exc.
11. Redlands—Malcolm Sillars	3	1 1 1 1	2 1 2 1 3	3 4 2 2 1	3 2 2 1 2	38 Exc.
12. Wheaton—Roy Fanoni	2	2 2 1 2	1 1 4 1 1	1 3 1 2 2	3 4 1 4 1	39 Exc.
13. St. Olaf—Don Hesse	2	3 1 1 1	3 4 4 2 3	3 1 1 2 1	2 2 1 1 2	40 Exc.
14. Concordia—David Brown	2	3 1 1 1	3 2 3 4 2	1 3 1 2 2	1 3 2 2 2	41 Exc.
15. Augustana, Ill.—A. Gordon	2	2 4 4 5	2 2 1 2 1	1 2 3 2 2	1 1 1 2 2	42 Exc.
16. St. Olaf—Roger Johnson	3	2 1 1 3	1 1 1 4 1	1 3 4 4 1	4 1 3 2 1	42 Exc.
17. Coll. of Pac.—Pat Corwin	2	3 1 3 1	3 2 1 3 3	3 4 2 4 2	1 1 1 2 1	43 Exc.
18. I.S.N.U.—James Jennings	2	1 1 2 3	1 2 2 2 2	1 3 4 2 1	4 2 2 4 2	43 Exc.
19. Wm. Penn.—Julian Winston	2	2 2 1 2	1 3 3 1 3	1 4 2 4 2	2 1 3 3 1	43 Exc.
20. Cent. Mich.—Joe Motto	3	3 3 2 2	3 3 4 1 1	2 1 2 1 1	3 1 4 1 2	43 Exc.
21. Durant—Gerald Sanders	4	1 1 3 4	1 2 4 4 1	1 1 2 1 1	2 2 3 4 1	43 Exc.
22. Tenn. Tch.—S. Goodpasture	2	1 1 4 3	3 3 1 2 1	1 2 2 3 2	2 2 3 1 4	43 Exc.
23. Coll. of Pac.—John Baird	4	2 1 2 1	1 3 1 3 2	3 2 3 3 2	2 3 1 3 2	44
24. River Falls—Louie Daniel	1	1 2 4 1	1 4 4 4 3	2 2 2 1 2	3 3 1 1 2	44
25. Kirksville—Bill Shinn	2	3 4 3 3	2 2 2 2 3	2 2 4 1 3	1 2 3 1 1	46
26. Baylor—Charles Adams	4	3 3 2 2	1 1 3 1 1	1 2 4 1 2	2 4 2 3 4	46
27. Cent. Mich.—Mary Scherich	3	2 3 4 1	1 3 4 2 3	1 3 3 1 1	2 4 3 3 3	48
28. Bowling Gr.—Roger Warner	4	1 1 4 4	2 1 1 1 1	3 2 2 3 2	2 3 3 4 4	48
29. DeKalb—George Green	3	1 4 4 2	1 3 3 1 4	4 2 3 4 2	1 1 3 2 1	49
30. Pepperdine—Beverly Meyer	1	1 1 1 4	4 2 3 3 3	2 2 3 4 1	3 3 1 4 4	50
31. Augustana, Ill.—R. Schrempf	3	4 4 2 3	2 3 2 4 2	2 2 1 1 1	3 2 4 3 2	50
32. Millikin—Lawrence Starman	1	2 1 1 2	4 1 4 2 2	4 4 4 4 4	1 2 2 4 1	50
33. Michigan State—H. Clark	4	2 4 1 1	2 1 3 3 2	1 4 1 4 4	3 3 1 3 3	50
34. Heidelberg—C. Dispensa	4	2 3 4 4	4 1 3 1 2	4 1 4 4 3	2 2 1 1 1	51
35. Principia—Reiner Barnes	4	1 1 1 3	4 3 3 4 2	2 1 1 3 3	4 2 3 2 4	51
36. Washington St.—J. Loschen	1	2 1 3 4	2 2 4 4 4	1 3 1 3 3	2 3 4 1 3	51
37. North Central—James Will	1	1 3 4 1	2 3 1 4 1	3 4 3 3 3	4 3 4 2 2	52
38. Wake Forest—Henry Huff	3	3 3 3 2	1 1 4 1 4	1 2 3 4 2	4 2 3 3 3	52
39. Sioux Falls—Clarise Smith	1	1 2 2 4	2 3 4 2 4	1 2 3 3 3	4 4 2 3 2	52
40. Puget Sound—L. Lindelien	2	4 3 3 4	1 1 1 2 1	4 2 4 3 1	2 4 2 4 4	52
41. Wheaton—Margaret Barker	1	3 3 2 3	1 2 4 1 3	2 4 4 1 3	4 4 2 3 4	53
42. No. Texas—June Mandeville	4	4 4 3 4	2 4 3 2 2	2 2 2 1 2	2 2 1 4 3	53
43. Pepperdine—Mary Knapp	3	4 4 1 2	1 1 1 3 1	2 2 4 3 2	4 4 4 4 4	54
44. Eureka—Fred Sipiora	1	2 4 1 2	3 2 1 4 3	4 4 2 2 2	4 4 4 2 3	54

College	Participant	Round I	Round II	Round III	Round IV	
45. Central, Ia.—J. Vander Lugt.....	3 4 4 3 4	2 4 1 2 3	3 2 3 2 3	2 3 2 2 2	54	
46. Doane—Charles Erickson.....	3 1 3 1 2	4 2 3 3 4	3 3 3 3 1	3 4 1 3 4	54	
47. T.C.U.—Charles Matthews.....	4 2 1 1 1	1 3 2 3 4	4 1 1 2 4	4 4 4 4 4	54	
48. Drury—Elton Smith.....	4 1 4 2 3	3 4 4 3 2	2 1 4 2 3	1 2 4 3 3	55	
49. Seattle Pac.—Robert Damon.....	4 2 1 2 4	3 3 3 2 4	3 4 3 4 4	1 3 2 2 1	55	
50. Monmouth—Pat Hofstetter.....	2 2 2 2 2	2 3 3 4 4	3 3 4 1 4	4 1 4 3 2	56	
51. Tulsa, Ted Welton.....	1 2 2 4 2	4 4 1 3 2	3 3 2 1 4	4 4 4 2 4	56	
52. No. Texas—Roswell Clark.....	2 4 2 4 3	2 4 2 4 4	3 4 3 3 4	1 1 3 2 1	56	
53. Monmouth—M. Petran.....	1 2 4 4 4	4 4 4 2 4	2 3 3 4 3	3 1 2 1 2	56	
54. Washburn—Sam Honeyman.....	3 3 2 2 3	4 4 4 4 1	2 1 2 3 4	2 4 4 2 3	57	
55. Carson-Newman—G. Coale.....	2 2 1 4 4	3 4 2 2 3	4 1 4 3 4	4 2 3 4 1	57	
56. Washburn—Davis Carson.....	3 1 4 3 4	4 4 3 2 2	2 3 3 3 3	4 3 3 4 1	59	
57. Macalester—A. Ramlochland.....	1 2 3 2 3	3 3 4 4 2	4 1 3 3 4	3 4 4 3 3	59	
58. Ripon—Paul Dudey.....	4 4 4 4 4	3 4 2 2 3	2 2 1 3 4	4 3 1 1 4	59	
59. Greeley—Robert Thomas.....	3 4 1 4 2	4 4 2 3 2	4 4 4 2 4	1 3 3 4 3	61	
60. Simpson—Carl Hayes.....	1 4 4 3 4	3 3 2 3 4	4 4 2 4 4	3 1 3 2 3	61	
61. Westminster—H. Altis.....	4 4 4 3 4	3 4 3 4 3	3 2 2 2 4	2 1 3 3 3	61	
62. Tulsa—Paul Brightmire.....	3 4 4 4 4	4 4 4 2 2	2 2 4 2 2	4 2 2 2 4	61	
63. Tenn. Tech.—John Mitchell.....	1 3 4 2 2	4 4 4 4 1	4 4 4 4 4	1 4 4 1 2	61	
64. Hardin-Sim.—David Ernest.....	4 1 3 3 4	3 4 3 2 4	3 1 1 1 4	4 4 4 4 4	61	
65. Coe—Barbara Chartier.....	2 4 3 4 3	2 2 3 4 3	4 3 4 4 4	1 1 4 4 3	62	
66. Greeley—Lewis Inglehart.....	1 3 3 3 4	3 2 4 4 3	3 1 4 4 4	3 4 4 4 2	63	
67. Carbondale—Charles Webb.....	3 3 4 4 4	4 4 4 4 4	4 1 4 4 4	1 1 3 2 1	63	
68. S.W. Louisiana—Patsy Shinn.....	4 4 4 4 3	4 4 4 2 4	1 2 2 4 2	3 4 4 1 4	64	
69. Ada—Thelma Hokey.....	1 4 3 3 4	2 3 4 4 4	4 4 4 3 3	4 3 2 2 3	64	
70. Millikin—Joan Meisner.....	4 4 4 3 1	4 4 4 3 3	4 2 1 4 4	4 3 4 1 4	65	
71. Central, Ia.—M. Walvoard.....	4 2 2 4 4	4 4 4 4 4	3 1 2 3 3	4 4 2 4 4	66	
72. Macalester—Grace Langley.....	4 3 4 3 4	3 1 2 1 3	4 4 4 3 4	4 4 4 3 4	66	
73. Puget Sound—K. Campbell.....	2 3 4 4 4	1 4 3 3 4	3 4 3 2 4	3 3 4 4 4	66	
74. I.S.N.U.—Iris Shreve.....	3 4 2 4 3	4 3 2 4 4	4 4 4 4 4	2 4 2 2 4	67	
75. Emporia—Pat O'Mara.....	2 3 4 1 3	4 4 4 4 3	4 4 4 4 4	4 3 1 4 4	68	
76. S.D. State—Eileen Wagner.....	4 4 3 4 1	4 1 2 4 4	4 4 2 4 4	4 4 3 4 4	68	
77. Lenoir Rhyne—J. Peeler.....	4 3 3 4 1	3 2 3 3 4	4 4 4 4 4	3 4 4 4 4	69	
78. S.D. State—C. Hullinder.....	4 2 4 4 2	4 4 4 4 4	3 4 3 4 3	2 2 4 4 4	69	
79. Carson-Newman—W. Barker.....	3 4 2 4 4	3 3 4 4 3	3 3 3 4 2	4 4 4 4 4	69	
80. Kirksville—Lloyd Collins.....	4 2 4 4 2	4 4 4 1 4	4 3 4 4 4	4 3 3 4 4	70	
81. Simpson—H. Ellingsworth.....	4 4 4 3 4	4 2 4 4 1	4 4 4 4 4	4 4 4 4 2	72	
82. Hope—Luella Pyle.....	4 4 4 4 2	3 3 4 4 4	4 2 4 4 4	4 4 3 4 4	73	
83. Bowling Gr.—A. Goodfellow.....	3 4 1 4 4	4 2 4 4 4	4 4 4 4 4	4 4 4 3 4	73	
84. Wm. Penn—D. Hoover.....	4 4 4 4 4	4 4 3 4 3	4 4 3 4 4	3 3 4 4 4	75	
85. Michigan State—R. Kinney.....	4 4 3 4 3	4 4 4 4 4	4 4 4 4 4	4 4 2 3 4	75	
86. Western State—A. Risser.....	2 4 4 4 4	4 4 4 4 4	4 4 2 4 4	4 4 4 4 4	76	
87. McPherson—Robert Yoder.....	4 4 4 4 4	4 4 4 4 4	3 4 4 4 3	2 4 4 4 4	76	
88. Heidelberg—Norine Doll.....	4 4 3 4 3	4 4 4 4 4	4 4 4 4 4	4 4 3 4 4	77	
89. McPherson—T. Geisert.....	4 4 4 4 4	4 4 4 4 4	4 3 4 4 4	4 4 4 3 4	78	
90. Sioux Falls—Lois DeKramer.....	4 4 4 4 4	4 4 4 4 4	4 4 4 4 4	4 4 3 3 4	78	
91. Hardin-Sim.—Fluer Walton.....	4 4 4 4 4	4 4 4 3 4	4 3 4 4 4	4 4 4 4 4	78	
92. Western State—E. Adams.....	4 4 4 4 4	4 4 4 4 4	4 4 4 4 4	4 3 4 4 4	79	

Discussion Topic: How Can We Improve Conditions Between Russia and America?

Men's Debate

Round I

Cape Girardeau	L
Augustana, Ill.	W
Centre	L
Baker	W
Central, Iowa	L
Baldwin-Wallace	W
Centenary	L
Baylor	W
Westminster	W
Bowling Green	L
Cape Girardeau	L
Augustana, Ill.	W
Drury	L
Carbondale	W
Carson-Newman	L
Michigan State	W
Centenary	L
Baylor	W
Central, Iowa	L
Baldwin-Wallace	W
Louisiana College	L
Central Michigan	W
Centre	L
Baker	W
William Jewell	W
Charleston	L
Coe	L
Washburn	W
Seattle Pacific	W
College of Idaho	L
Seattle Pacific	L
College of Pacific	W
Colorado A. & M.	W
I. S. N. U.	L
Concordia	W
North Texas	L
Dakota Wesleyan	W
Grove City	L
Kirksville	L
DeKalb	W
Doane	W
Principia	L

Round II

Augustana, Ill.	W
South Dakota State	L
Baker	W
Colorado State	L
Baldwin-Wallace	L
Yankton	W
Baylor	W
Western State	L
Bowling Green	W
Colorado A. & M.	L
Principia	L
Cape Girardeau	W
Carbondale	W
Sioux Falls	L
Pepperdine	W
Carson-Newman	L
Wheaton	W
Centenary	L
Kent	L
Central Iowa	W
Central Michigan	W
Tulsa	L
Michigan State	L
Centre	W
Charleston	L
Dubuque	W
DeKalb	L
Coe	W
College of Idaho	W
William Jewell	L
College of Pacific	W
William Penn	L
Bowling Green	W
Colorado A. & M.	L
Toledo	L
Concordia	W
Emporia	W
Dakota Wesleyan	L
DeKalb	L
Coe	W
Grove City	W
Doane	L

Round III

Doane	L
Augustana, Ill.	W
Carson-Newman	L
Baker	W
Luther	W
Baldwin-Wallace	L
Principia	L
Baylor	W
Tulsa	W
Bowling Green	L
Cape Girardeau	W
Bye	
Durant	W
Carbondale	L
Carson-Newman	L
Baker	W
Centenary	L
Ripon	W
Central, Iowa	W
Bye	
William Penn	W
Central Michigan	L
Centre	W
Toledo	L
Seattle Pacific	W
Charleston	L
Coe	W
College of Idaho	L
Coe	W
College of Idaho	L
Dubuque	L
College of Pacific	W
Colorado A. & M.	W
Otterbein	L
Concordia	W
Eureka	L
Dakota Wesleyan	W
Principia	L
St. Thomas	W
DeKalb	L
Doane	L
Augustana, Ill.	W

Round IV

Augustana, Ill.	
Carson-Newman	
Baker	
Dubuque	
Baldwin-Wallace	
Westminster	
Baylor	
Kirksville	
Bowling Green	
Macalester	
College of Idaho	
Cape Girardeau	
Carbondale	
Concordia	
Augustana, Ill.	
Carson-Newman	
Emporia	
Centenary	
Ottawa	
Central, Iowa	
Central Michigan	
Stetson	
Centre	
Bye	
Charleston	
South Dakota State	
Ripon	
Coe	
College of Idaho	
Baylor	
College of Pacific	
Drury	
Heidelberg	
Colorado A. & M.	
Carbondale	
Concordia	
DeKalb	
Dakota Wesleyan	
DeKalb	
Dakota Wesleyan	
Washburn	
Doane	

Round V		Round VI		Round VII		Round VIII	
State	L	Augustana, Ill.	L	William Jewell	L	Augustana, Ill.	W
ana, Ill.	W	St. Olaf	W	Augustana, Ill.	W	Coe	L
Pacific	W	Baker	L	Durant	W	Baker	L
	L	William Jewell	W	Baker	L	Cape Girardeau	W
ana College	L	Baldwin-Wallace	L	Macalester	L	Baldwin-Wallace	W
n-Wallace	W	Tulsa	W	Baldwin-Wallace	W	Stetson	L
	L	Baylor	W	Dakota Wesleyan	L	Baylor	W
	W	St. Thomas	L	Baylor	W	Tennessee Tech	L
	L	Bowling Green	L	Yankton	W	Bowling Green	L
g Green	W	Wake Forest	W	Bowling Green	L	Luther	W
Girardeau	W	Charleston	L	Cape Girardeau	L	Baker	L
n	L	Cape Girardeau	W	Pepperdine	W	Cape Girardeau	W
	W	Carbondale	W	William Penn.	L	Carbondale	L
ndale	L	Colorado State	L	Carbondale	W	Dubuque	W
Newman	W	Carson-Newman	W	Carson-Newman	L	Millikin	L
Falls	L	Bye		College of Idaho	W	Carson-Newman	W
ary	W	Grove City	W	Centenary	W	Washburn	W
ia	L	Centenary	L	Marietta	L	Centenary	L
al, Iowa	L	Monmouth	W	Central, Iowa	W	I. S. N. U.	W
	W	Central, Iowa	L	Illinois Wesleyan	L	Central, Iowa	L
	L	Central Michigan	L	Luther	W	Central Michigan	L
al Michigan	W	Sioux Falls	W	Central Michigan	L	Concordia	W
	W	River Falls	L	Centre	W	College of Pacific	W
ndale	L	Centre	W	Charleston	L	Centre	L
	W	Charleston	L	Centre	W	Charleston	L
ston	L	Cape Girardeau	W	Charleston	L	St. Olaf	W
	W	Pepperdine	W	Coe	W	Augustana, Ill.	W
gan State	L	Coe	L	Grove City	L	Coe	L
a Wesleyan	W	College of Idaho	L	Carson-Newman	L	College of Idaho	L
ge of Idaho	L	Doane	W	College of Idaho	W	Western State	W
Dakota State	L	College of Pacific	W	Concordia	L	College of Pacific	W
ge of Pacific	W	Durant	L	College of Pacific	W	Centre	L
do A. & M.	L	North Central	W	Colorado A. & M.	L	Hardin-Simmons	L
nds	W	Colorado A. & M.	L	Monmouth	W	Colorado A. & M.	W
rdia	W	Texas Christian	L	Concordia	L	Central Michigan	L
rd Payne	L	Concordia	W	College of Pacific	W	Concordia	W
a Wesleyan	W	Washburn	L	Dakota Wesleyan	L	Pepperdine	L
ge of Idaho	L	Dakota Wesleyan	W	Baylor	W	Dakota Wesleyan	W
essee Tech	W	DeKalb	W	Western State	L	DeKalb	W
b	L	Georgetown	L	DeKalb	W	Puget Sound	L
	W	College of Idaho	L	Doane	L	Michigan State	L
ston	L	Doane	W	Ripon	W	Doane	W

Round One	Round Two	Round Three	Round Four
Drury L	River Falls W	Drury W	College of Pacific
Carbondale W	Drury L	Texas Christian L	Drury
Dubuque W	Charleston L	Dubuque L	Baker
Millikin L	Dubuque W	College of Pacific W	Dubuque
Durant W	Durant W	Durant W	Millikin
River Falls L	Bye	Carbondale L	Durant
Georgetown L	Emporia W	Tennessee Tech L	Emporia
Emporia W	Dakota Wesleyan L	Emporia W	Centenary
Wayne W	Eureka L	Concordia W	Eureka
Eureka L	Luther W	Eureka L	Louisiana College
Georgetown L	Redlands W	Georgetown L	Marietta
Emporia W	Georgetown L	Grove City W	Georgetown
Greeley State L	Baker W	Greeley State L	River Falls
Toledo W	Colorado State L	North Texas W	Colorado State
Dakota Wesleyan W	Grove City W	Georgetown L	Grove City
Grove City L	Doane L	Grove City W	Western State
Gustavus Adolphus L	Millikin W	Gustavus Adolphus W	Toledo
College of Pacific W	Gustavus Adolphus L	McPherson L	Gustavus Adolphus
Simpson L	Hardin-Simmons W	Lenoir Rhyne W	Hardin-Simmons
Hardin-Simmons W	St. Thomas L	Hardin-Simmons L	Tennessee Tech
Yankton W	Heidelberg L	Central, Iowa W	Heidelberg
Heidelberg L	Warrensburg W	Heidelberg W	Colorado A. & M.
Lenoir Rhyne L	Hiram W	Macalester L	Hiram
Hiram W	Simpson L	Hiram W	Warrensburg
Tulsa L	Illinois Wesleyan L	Louisiana College L	Illinois Wesleyan
Illinois Wesleyan W	Westminster W	Illinois Wesleyan W	Wake Forest
Colorado A. & M. W	I. S. N. U. L	Westminster L	I. S. N. U.
I. S. N. U. L	Nebraska Wesleyan ... W	I. S. N. U. W	Lenoir Rhyne
Luther W	Kent L	Wayne L	Kent
Kent L	Central Iowa W	Kent W	Tulsa
Kirkville L	Marietta L	Kirkville W	Baylor
DeKalb W	Kirkville W	Washburn L	Kirkville
Lenoir Rhyne L	Monmouth W	Lenoir Rhyne W	I. S. N. U.
Hiram W	Lenoir Rhyne L	Hardin-Simmons L	Lenoir Rhyne
Louisiana College L	McPherson L	Louisiana College L	Eureka
Central Michigan W	Louisiana College W	Illinois Wesleyan W	Louisiana College
Luther W	Eureka L	Luther W	Howard Payne
Kent L	Luther W	Baldwin-Wallace L	Luther
Macalester L	Ottawa W	Macalester L	Bowling Green
Monmouth W	Macalester L	Hiram W	Macalester
William Penn L	McPherson L	Gustavus Adolphus W	McPherson
McPherson W	Louisiana College W	McPherson L	Sioux Falls
St. Thomas W	Marietta L	Simpson W	Marietta
Marietta L	Kirkville W	Marietta L	Georgetown

Round Six	Round Five	Round Seven	Round Eight
Michigan.....L	McPherson.....W	Drury.....W	Eureka.....L
Michigan.....W	Drury.....L	Toledo.....L	Drury.....W
.....L	Toledo.....W	Dubuque.....W	Carbondale.....L
Texas.....W	Dubuque.....L	Bye.....	Dubuque.....W
.....W	College of Pacific.....W	Durant.....W	North Texas.....L
son.....L	Durant.....L	Baker.....L	Durant.....W
Wesleyan.....W	Emporia.....W	Kirksville.....L	Emporia.....W
.....L	Puget Sound.....L	Emporia 4.....W	Simpson.....L
Adolphus.....L	Eureka.....W	Stetson.....L	Eureka.....L
.....W	William Penn.....L	Eureka.....W	Drury.....W
.....W	DeKalb.....W	Georgetown.....L	Ripon.....W
.....L	Georgetown.....L	Wheaton.....W	Georgetown.....L
State.....W	Carbondale.....W	Colorado State.....W	McPherson.....L
Christian.....L	Colorado State.....L	Millikin.....L	Colorado State.....W
Sound.....L	Grove City.....W	Coe.....W	Grove City.....L
City.....W	Centenary.....L	Grove City.....L	St. Thomas.....W
Adolphus.....L	North Texas.....W	Gustavus Adolphus.....W	Texas Christian.....W
.....W	Gustavus Adolphus.....L	River Falls.....L	Gustavus Adolphus.....L
.....W	Hardin-Simmons.....L	Puget Sound.....L	Hardin-Simmons.....L
Simmons.....L	Warrensburg.....W	Hardin-Simmons.....W	Colorado A. & M.....W
.....W	Heidelberg.....L	Lenoir Rhyne.....L	Heidelberg.....L
erg.....L	Westminster.....W	Heidelberg.....W	Wake Forest.....W
Iowa.....L	Hiram.....W	Nebraska Wesleyan.....W	Hiram.....W
.....W	Yankton.....L	Hiram.....L	Westminster.....L
Falls.....L	Illinois Wesleyan.....W	Central, Iowa.....W	Illinois Wesleyan.....L
Wesleyan.....W	Stetson.....L	Illinois Wesleyan.....L	Wayne.....W
Forest.....W	I. S. N. U.....W	Warrensburg.....L	I. S. N. U.....W
U.....L	Macalester.....L	I. S. N. U.....W	Central, Iowa.....L
Penn.....L	Kent.....L	Wake Forest.....W	Kent.....L
.....W	Louisiana College.....W	Kent.....L	Sioux Falls.....W
.....W	Ripon.....W	Kirksville.....L	Principia.....L
ine.....L	Kirksville.....L	Emporia.....W	Kirksville.....W
Rhyne.....L	Otterbein.....W	Lenoir Rhyne.....L	Redlands.....W
.....W	Lenoir Rhyne.....L	Heidelberg.....W	Lenoir Rhyne.....L
ana College.....L	Kent.....L	Louisiana College.....W	Ottawa.....L
Wallace.....W	Louisiana College.....W	Texas Christian.....L	Louisiana College.....W
.....L	Ottawa.....W	Luther.....W	Bowling Green.....L
outh.....W	Luther.....L	Central Michigan.....L	Luther.....W
ster.....L	I. S. N. U.....W	Macalester.....L	North Central.....W
in.....W	Macalester.....L	Baldwin-Wallace.....W	Macalester.....L
.....W	McPherson.....W	Wayne.....L	McPherson.....L
son.....L	Drury.....L	McPherson.....W	Colorado State.....W
asburg.....L	Marietta.....L	Centenary.....W	Marietta.....L
.....W	Tennessee Tech.....W	Marietta.....L	Nebraska Wesleyan.....W

Round II		Round I		Round III		Round IV	
Carson-Newman	L	Michigan State	L	St. Olaf	L	Michigan State	L
Michigan State	W	Centre	W	Michigan State	W	William Jewell	W
Dubuque	W	Millikin	W	William Jewell	W	Millikin	W
Millikin	L	Gustavus Adolphus	L	Millikin	L	Durant	L
Macalester	L	Monmouth	W	Wake Forest	W	Monmouth	W
Monmouth	W	Lenoir Rhyne	L	Monmouth	L	Yankton	L
Nebraska Wesleyan	W	I. S. N. U.	L	Nebraska Wesleyan	W	North Central	W
Otterbein	L	Nebraska Wesleyan	W	Wheaton	L	Nebraska Wesleyan	L
Warrensburg	W	North Central	L	Yankton	W	North Central	W
North Central	L	Tennessee Tech	W	North Central	L	Nebraska Wesleyan	L
Concordia	W	North Texas	W	Colorado State	L	North Texas	W
North Texas	L	Wayne	L	North Texas	W	William Jewell	L
Wake Forest	W	Ottawa	W	Stetson	L	Ottawa	W
Ottawa	L	Macalester	L	Ottawa	W	Central, Iowa	L
Nebraska Wesleyan	W	Otterbein	W	Colorado A. & M.	W	Otterbein	W
Otterbein	L	Puget Sound	L	Otterbein	L	Simpson	L
St. Olaf	L	Pepperdine	W	Western State	L	Pepperdine	W
Pepperdine	W	Carson-Newman	L	Pepperdine	W	Seattle Pacific	L
Doane	W	Principia	L	Dakota Wesleyan	W	Principia	W
Principia	L	Cape Girardeau	W	Principia	L	St. Olaf	L
Puget Sound	L	Otterbein	W	Puget Sound	L	Redlands	W
Wheaton	W	Puget Sound	L	Baylor	W	Puget Sound	L
Tennessee Tech	L	Redlands	W	Warrensburg	L	Redlands	W
Redlands	W	Georgetown	L	Redlands	W	Puget Sound	L
Western State	L	Ripon	W	Centenary	L	Ripon	W
Ripon	W	St. Olaf	L	Ripon	W	Coe	L
Durant	W	River Falls	W	South Dakota State	L	River Falls	W
River Falls	L	Drury	L	River Falls	W	Colorado State	L
St. Olaf	L	Ripon	W	St. Olaf	L	Principia	W
Pepperdine	W	St. Olaf	L	Michigan State	W	St. Olaf	L
St. Thomas	W	Hardin-Simmons	W	St. Thomas	W	Wheaton	W
Marietta	L	St. Thomas	L	DeKalb	L	St. Thomas	L
Seattle Pacific	W	Washburn	L	Seattle Pacific	W	Pepperdine	W
College of Idaho	L	Seattle Pacific	W	Charleston	L	Seattle Pacific	L
Simpson	L	Hiram	W	Simpson	W	Otterbein	W
Hardin-Simmons	W	Simpson	L	Marietta	L	Simpson	L
Sioux Falls	W	Carbondale	W	Sioux Falls	W	McPherson	W
Texas Christian	L	Sioux Falls	L	Howard Payne	L	Sioux Falls	L
S. D. State	W	Augustana, Ill.	W	South Dakota State	L	Charleston	W
South Dakota State	W	South Dakota State	L	River Falls	W	South Dakota State	L
Bye							
Stetson	L	Texas Christian	W	Stetson	L	Central Michigan	W
Howard Payne	W	Stetson	L	Ottawa	W	Stetson	L

Round V		Round VI		Round VII		Round VIII	
State	W L	Michigan State Seattle Pacific	W L	South Dakota State Michigan State	L W	Michigan State Doane	L W
Girardeau	W L	Millikin South Dakota State	W L	Colorado State Millikin	W L	Millikin Carson-Newman	L W
outh	L W	Monmouth Central, Iowa	W L	Colorado A. & M. Monmouth	L W	Monmouth Tulsa	W L
Wesleyan	W L	Redlands Nebraska Wesleyan	L W	Nebraska Wesleyan Hiram	W L	Marietta Nebraska Wesleyan	L W
ster Central	L W	North Central Colorado A. & M.	W L	Simpson North Central	L W	North Central Macalester	W L
ce Texas	L W	North Texas Gustavus Adolphus	W L	Sioux Falls North Texas	L W	North Texas Durant	L W
	W L	Ottawa Luther	W L	Westminster Ottawa	W L	Ottawa Louisiana College	L W
ster in	L W	Otterbein Lenoir Rhyne	W L	Tennessee Tech Otterbein	L W	Otterbein Yankton	L W
le dine	W L	Pepperdine Coe	W L	Cape Girardeau Pepperdine	L W	Pepperdine Dakota Wesleyan	L W
ary a	W L	Principia Western State	W L	Seattle Pacific Principia	W L	Principia Kirksville	L W
Sound City	L W	Emporia Puget Sound	W L	Puget Sound Hardin-Simmons	L W	DeKalb Puget Sound	W L
o A. & M. ds	L W	Redlands Nebraska Wesleyan	L W	St. Thomas Redlands	L W	Redlands Lenoir Rhyne	W L
omas	W L	Ripon Kirksville	W L	Doane Ripon	L W	Ripon Georgetown	W L
Newman Falls	W L	River Falls Centre	L W	Gustavus Adolphus River Falls	W L	River Falls William Jewell	L W
if	W	Augustana, Ill. St. Olaf	L W	St. Olaf Washburn	W L	Charleston St. Olaf	L W
omas	W L	Baylor St. Thomas	W L	St. Thomas Redlands	L W	Grove City St. Thomas	L W
Pacific	W L	Michigan State Seattle Pacific	W L	Seattle Pacific Principia	W L	Seattle Pacific Bye	W
on	L W	Wheaton Simpson	L W	Simpson North Central	L W	Emporia Simpson	W L
Falls Wesleyan	L W	Central Michigan Sioux Falls	L W	Sioux Falls North Texas	L W	Kent Sioux Falls	L W
Dakota State of Pacific	L W	Millikin South Dakota State	W L	South Dakota State Michigan State	L W	Toledo South Dakota State	W L
g Green	L W	Illinois Wesleyan Stetson	W L	Stetson Eureka	L W	Baldwin-Wallace Stetson	W L

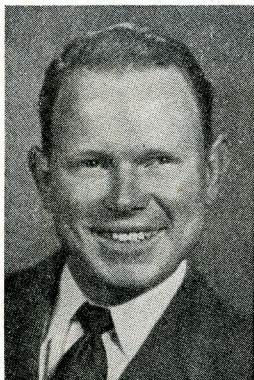
Round One

Round Two

Round Three

Round Four

Sioux Falls W	Texas Christian W	Drury W	Texas Christian W
Texas Christian L	Stetson L	Texas Christian L	Wayne L
Colorado State L	Toledo L	Centre W	Toledo L
Toledo W	Concordia W	Toledo L	Gustavus Adolphus L
Tulsa L	Central Michigan W	Tulsa W	Kent L
Illinois Wesleyan W	Tulsa L	Bowling Green L	Tulsa L
Wake Forrest W	Howard Payne L	Wake Forest W	Illinois Wesleyan W
Ottawa L	Wake Forest W	Monmouth L	Wake Forest L
Warrensburg W	Heidelberg L	Warrensburg L	Hiram L
North Central L	Warrensburg W	Redlands W	Warrensburg L
Coe L	Washburn W	Kirkville W	Washburn L
Washburn W	Seattle Pacific W	Washburn L	Doane L
Wayne W	North Texas W	Wayne L	Texas Christian W
Eureka L	Wayne L	Kent W	Wayne L
Western State L	Baylor W	Western State L	Grove City L
Ripon W	Western State L	Pepperdine W	Western State L
Westminster W	Illinois Wesleyan W	Westminster L	Baldwin-Wallace W
Bowling Green L	Westminster W	I. S. N. U. W	Westminster L
Puget Sound L	Wheaton W	Nebraska Wesleyan W	Wheaton L
Wheaton W	Centenary L	Wheaton L	St. Thomas L
William Jewell W	College of Idaho W	William Jewell W	Michigan State L
Charleston L	William Jewell L	Millikin L	William Jewell L
William Penn L	College of Pacific W	William Penn W	North Texas L
McPherson W	William Penn L	Central Michigan L	William Penn L
Yankton W	Baldwin-Wallace L	Yankton W	Monmouth L
Heidelberg L	Yankton W	North Central L	Yankton L
Tennessee Tech L	North Central L	Tennessee Tech L	Hardin-Simmons W
Redlands W	Tennessee Tech W	Emporia W	Tennessee Tech L



Charles Adams and Charles McGregor. Adams has won first place in four of the six tournaments in which he has participated. He has won 26 out of 39 debates. He served in the Air Corps, is a Senior, and ultimately expects to teach Religious History. McGregor won first in three out of six tournaments and 34 out of 39 debates. He is a former B-17 pilot.

