

FORENSIC STUDIES

William A. Yaremchuk

Director of Forensics
Monmouth College
West Long Branch, N.J.

The need for the development of a philosophy and structure of "Forensic Studies" has been cited on numerous occasions over the past few years.¹ The Western Forensic Association Position Papers² added support for the belief that the purely traditional activity of "debate-only" cannot constitute the total substance of forensic education. The WFA Papers clearly suggest the need for reform in our purposes and approaches to forensics. Continually the cry from forensic directors is that the current thrust towards competition and winning has significantly over-shadowed the educational values of forensic activities. Many well-intentioned coaches have been caught up in the "win-at-any-cost" syndrome.³ In some instances the worth of a forensics program has been questioned by administrative heads of colleges and universities, but more disturbing (and refreshing to those seeking progress in forensic education) is the open questioning by students regarding the values of participation in the "win-only" environment of current competition.

"What's it all about or for?" constitutes a legitimate question for all who profess to be teachers of the art of forensic communication. Donald G. Douglas has correctly assessed the necessity for the expansion of the type of education currently in operation in our schools. The structures and procedures for such a program of forensic education have been outlined.⁴ It seems apparent that the adoption of "Forensic Studies" is an answer to the problem of focus and direction of a forensic program.

"Forensic Studies" should provide an environment in which the study of contemporary problems could be conducted.⁵ Contemporary problem-solving techniques and processes must become a vital part of forensic education. Group studies,

laboratory projects, as well as student-oriented independent studies, should serve as major activities for the course. Student-selected topics for research and analysis would likely provide significant motivation for the application of the principles of research, analysis, and synthesis of ideas. A major concern of the processes and procedures in "Forensic Studies" would be the careful examination of the functions and application of rational decision-making. Furthermore, students would be given an opportunity to improve their skill in forensic communication with emphasis on interpersonal, group, private, and public communication as distinct from the tournament circuit approach.

Directors of Forensics should begin to develop courses or mini-courses in "Forensic Studies." The use of a workshop or activities approach, group sessions, laboratory experiences, simulation techniques and individual-selected areas of concern would enhance the scope of forensic education. The increased perception and skill developed by a thorough and rigorous involvement in problem-solving would be sufficient enough to warrant the adoption of "Forensic Studies" as a viable course offering in speech and communication departments. Directors of Forensics have often complained about the state of forensics; they can take the first step by developing a new direction for forensics. Everyone complains about forensics but no one does anything. The time is now!

FOOTNOTES

1. Donald G. Douglas, "Toward a Philosophy of Forensic Education," **Journal of the American Forensic Association**, VIII (Summer, 1971), pp. 36-41.

2. WFA Position Papers, **Journal of the American Forensic Association**, VIII (Spring, 1972), pp. 175-191.

3. William Schrier, "Chapter III, This Business of Winning," **Contest Oratory: A Handbook for High School and College Contestants and Coaches**, Metuchen, New Jersey: The Scarecrow Press, Inc., 1971, pp. 29-38.

4. Douglas, pp. 37-40.

5. Donald G. Douglas, "A Need for Review: Forensic Studies in Contemporary Speech Education," **Journal of the American Forensic Association**, VIII (Summer, 1971), p. 181.

The Secretary's Page

Ted Karl

There is no question that the statement every Secretary-Treasurer and Officer of Pi Kappa Delta has made, "The heart and soul of Pi Kappa Delta is the local chapter," is still true. In this office it is becoming evermore true, however, that the Province is the catalyst which makes the wheels of communication begin to turn each fall. This must be especially true of the Governors.

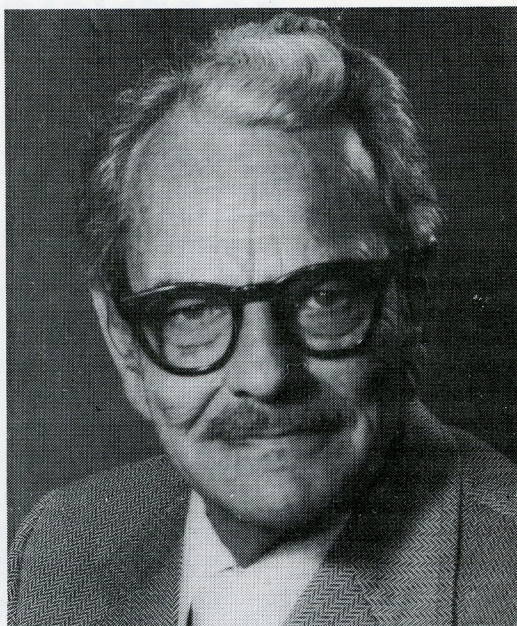
The fall report this year, although somewhat better than previous years, was not yet up to the percentage of returns one could expect from a live and energetic national organization which professes communication as its reason for existence.

This is the year of the Province, and the directory printed in this issue should be of importance to all members and sponsors. Since four governors did not respond to our request for information about the chapters in the province, this office was forced to send out the report form on the basis of previous information. We have therefore listed names of some sponsors and chapter presidents that are accurate to the best of our knowledge, and yet some others (far too many) were left blank. Far too many report forms were returned to us as the persons to whom they addressed were no longer there, and of course a number of chapters just did not answer.

Using the new form did give us a higher percentage of returns than in the past, so it may well be worth the added postage expense.

The second reason for wanting the fall report is to identify the number of *Forensics* to send to each chapter. The possibility of sending too many is a real problem, because the waste and resulting cost is senseless. The *Forensic* is our most expensive service to the organization, so if for no other reason, please send in the report if it is still in your possession. If you did not receive a report form, please let us know and we will see to it you get one. The information is still of much importance.

By this time you have all received information regarding the supplies and keys. Some of these are free, and others have a



price indicated. In each case where we make a charge it is at cost. Please let us know your needs and we will send the material as soon as possible. In the case of keys we will need about eight weeks, since the Balfour Company no longer keeps an inventory on hand, and each key is made to order. Please notice we have listed two price lists, one for 10K gold and one for Balclad, a new material, which is much cheaper.

Just a suggestion to the effect that the Province Conventions are coming up quickly. A student must be a member to participate in those conventions. Send in the Form A in plenty of time before the Province Convention so that his membership card may be mailed. Record of this membership is to be in the National Office prior to Province participation.

Send in memberships and key orders as soon as possible so that both will be available to each chapter in time for initiation or award banquets later in the year. A spring observance does have a positive effect on the chapter and gives the opportunity to review the year and make preparations for the coming year.

To all of you who responded so quickly and in such detail, thank you. It is the hope of this office that all of you had happy holidays and that the efforts of the fall will bring an active and rewarding spring.

CHAPTER NOTES . . . Edited by Roselyn Freedman



Roselyn L. Freedman

With the election of Phyllis Bosley to the National Council, Chapter Notes acquires a new editor: Miss Roselyn Freedman, who is assistant professor of speech and drama and director of forensics at Morris Harvey College.

This winter, she is on leave and is a doctoral candidate at the University of Michigan. A native of Charleston, W. Va., she has studied at Ohio University, Georgia Institute of Technology, and Morris Harvey. She holds an M.F.A. in Theatre Arts and Speech from Ohio U., and has done additional graduate work at the University of Nebraska-Omaha, and West Virginia University.

Since 1964 Roselyn has been sponsor of the West Virginia Gamma Chapter. She was Province Convention hostess in 1968, and at Arizona State, Houston, and Omaha she served on National PKD Convention committees. Secretary-Treasurer of the Province of the Lakes from 1970 to 1972, she is now lieutenant governor. The **Dictionary of International Biography, Outstanding Educators of America, and Personalities of the South** all carry entries about her.

You'll help Roselyn make this a good year for Chapter Notes if you will send news and pictures of your chapter to her for March and May: The address: 110 Hill Street, Apt. #3, Ann Arbor, Mich. 48104.

PROVINCE 1 1 Chapter Reporting

CHADRON STATE COLLEGE NEBRASKA

Chadron State is in the process of rebuilding its chapter under the leadership of a new coach, Prof. Walter McCormick. An early activity was participation in the Kearney State College tournament, followed by a tournament on our own campus — the first Tournament of the Pioneers, Nov. 30-Dec. 1.

Officers are: President, Janice Tiensvold; vice-president, Jennie Donnell; secretary-treasurer, Brad Barrows; corresponding secretary, Mitch Bean.

PROVINCE 2 2 Chapters Reporting

CENTRAL COLLEGE IOWA

Reporter: B. Brunsting

Iowa Beta Chapter started the year with the election of new officers: Pamela Frantz, president; Patricia Cogswell, vice-president; and Sandra Moldenshardt, secretary.

We participated in the Sioux Falls tournament and received one superior and four excellent ratings. Guest evaluator at the tournament was Dr. Leslie Coger (Southwest Missouri). Another squad attended the Nebraska Wesleyan tournament.

A Reader's Theatre Workshop is planned for February, with Dr. Rob Smith (Purdue) serving as guest critic.

Diane Vass, chapter president in 1972-73, is pursuing a master's degree at Michigan State University with an assistantship in costume design.

WILLIAM JEWELL COLLEGE MISSOURI

Missouri Delta Chapter has began a busy year with success at the Garden City, Kans., tournament and the Kearney State College tournament. Freshman students won first place at Garden City. While

accumulating points toward the first place sweepstakes at Kearney State, Jewell teams won first and second places in senior debate, second place in junior debate, second in oratory, and placed a finalist in extemp.

The chapter is beginning plans for the annual Blizzard Debate Tournament Feb. 15 and 16. The campus in Liberty, Mo., is also the site selected for the Missouri State Tournament, March 7-9.

While these notes were being written, two teams were preparing to depart for the tournament at Bradley University. This trip is followed by audience debates at Southeast Missouri State University and a demonstration debate for high school debaters of the Springfield, Mo., school district.

Final big trip of the semester is the tournament at Whitewater — a long journey by commercial bus and hired car, because of the gas shortage.

PROVINCE 3 1 Chapter Reporting

CARTHAGE COLLEGE WISCONSIN

Reporter: Timothy Diemer

Wisconsin Theta Chapter began the forensic year with a get-together in early September to acquaint new students with the forensic program and to provide information concerning Pi Kappa Delta.

Chapter members attended the Butler Tournament in Indianapolis and the Bradley Tournament in Peoria, with John Bleeke placing fourth in oratory at Bradley.

The annual high school debate tournament was hosted during the first weekend in November with chapter members assisting in the areas of coordination and tabulation.

The Little Pike Individual Events Tournament was hosted during the first weekend in December. Added to the list of events this year were eight new individual speaking contests.

Officers for 1973-74 are: Joel Bleeke, president; Susan Schoen, vice-president; Timothy Diemer, secretary; and Helen McRae, treasurer. Other members include: John Bleeke, Wendy Buckley, Dan Gard, Scott Needham, and Paul Petterson.

PROVINCE 4 1 Chapter Reporting UNIVERSITY OF THE PACIFIC CALIFORNIA

The annual Intercollegiate Speech Results compilation presents a ranking of debate schools according to their size (the publication is edited by Prof. Jack Howe, director of forensics at California State University, Long Beach.) In last year's edition, The University of the Pacific was ranked second among medium sized schools with enrollments between 2400 and 8000.

Among the speakers who brought honors to the University were Jon Schamber, Linda Horner (extemporaneous speaking), Retha Arens, and Albert Fierro (oratory). Ken Nichols and Danny Lambertson were debaters, and Marianne Rivera and Bud Starr participated in debate and individual events. First year debaters were Frank Floyd and John Hoban. Dr. Paul Winters is director of forensics.

PROVINCE 6 1 Chapter Reporting

LOUISIANA TECH UNIVERSITY

Reporter: Dr. Mary F. Beasley

Officers for 1973-74 are: Trish Spessard, president; Leon Emanuel, vice-president; David Price, secretary; Bud Richey, treasurer; Kathleen Stewart, social chairman; Celia Hanley, historian; and Dr. Mary F. Beasley, sponsor.

Tech hosts a high school tournament in mid-January and the Louisiana High School Tournament of Champions in the spring.



Shown as they place tabulated ballots into packets are [left to right]: Kevin Jones and Ginger Grigg [PKD members], Deb Betts, and Melanie Gill.

PROVINCE 9
1 Chapter Reporting

OLD DOMINION UNIVERSITY
Reporter: Gene Echols

Virginia Beta's officers for 1973-74 are: Doug Hardy, president; Bill Twomey, vice-president; and Gayle Falcooner, secretary-treasurer.

Early in the fall term the squad attended four tournaments. At Washington and Lee University's tournament the squad had the top affirmative and negative teams. At the College Forensic Tournament in Pennsylvania the squad had the top novice team and also received trophies for 1st place in persuasive speaking and 4th and 5th places in impromptu speaking. At Wake Forest University two freshman teams finished with 3-3 records. At Appalachian State University, two freshman debate teams received 1st and 2nd places.

ODU will host the annual forensic tournament Feb. 15-16 where an anticipated 40 teams will vie for awards in debate and individual speaking events. For an invitation, please submit a request.

Dr. Douglas M. Trank, coach and sponsor, is beginning his second year at ODU. This past summer Dr. Trank finished degree requirements at the University of Utah.

PROVINCE 10
1 Chapter Reporting

ROCKY MOUNTAIN COLLEGE
Reporter: Robert H. Lyon

The debaters from the University of Kent, England, paid their only visit in the intermountain north to Rocky Mountain College Nov. 12. A public debate on the permanence of the State of Israel was with Grant Lucas and Clyde Young, Montana Alpha chapter seniors.

Alpha chapter will sponsor the annual WyMonDak college tournament March 1-2. Duo interpretation, an event first offered last year, will again be featured. This event is proving to be very popular with students.

PROVINCE 11
1 Chapter Reporting

CALIFORNIA STATE COLLEGE
Reporter: Patrick L. Miller

Pennsylvania Zeta Chapter celebrated a successful year in 1972-73. Under the sponsorship of Forensic Union Director Patrick Miller, a five-member delegation attended the PKD Convention in Omaha, Neb.

The long, hard trip ended joyfully. Kay Johnston, sophomore from Monaca, received a gold medal in oral interpretation; J. Robert Keller, junior from Turtle Creek, received a gold medal in persuasive speaking; Betty Lauricia, junior from New Kensington, received a rating of excellence in discussion; and the varsity debate team composed of William Street, senior from Donora, and Russell Scuteri, senior from Monessen, received a rating of good in traditional debate. Additionally, the Cal. State contingent received a rating of excellence in sweepstakes.

During the year the Forensic Union broke all past records for miles traveled and awards received. The season was closed out with 38 awards including the sweepstakes award at the Allegheny Events Championships held at Frostburg State College, Maryland. A banquet was held to honor alumni and new members. The newly initiated members are: Ron Krepps, Mary Krainack, Patricia Kundar, Russell Holmes, Craig Lutes, Debbie Bens, Kerry Bolognese, and Negash Abdurahman.



Contingent to PKD National Convention: Seated [left to right]: Kay Johnston, Betty Lauricia; standing: J. Robert Keller, William Street, Russell Scuteri.

Pi Kappa Delta Directory

State and College and Province No.	Chapter President	Sponsor	Address
ARIZONA			
ALPHA — Northern Arizona Univ. - 4		Greg Gardner	Flagstaff
BETA — Arizona State Univ. - 4		Richard D. Sorvig	Tempe
GAMMA — University of Arizona - 4		Tim A. Browning	Tucson
ARKANSAS			
ALPHA — Henderson State College - 6		James E. Dockery	Arkadelphia
BETA — Ouachita University - 6		William Elder III	Arkadelphia
ZETA — Harding College - 6	Jana Smith	Evan Ulrey	Searcy
ETA — State College of Arkansas - 6	Bill Wacaster	Dr. Glenn Smith	Conway
THETA — Univ. of Arkansas at Monticello	Rose Holley	Dr. David Ray	Monticello
CALIFORNIA			
ALPHA — University of Redlands - 4		H. Ben Dillow	Redlands
GAMMA — California Inst. of Tech. - 4		Wiley Wright	Pasadena
DELTA — University of the Pacific - 4		Paul H. Winters	Stockton
ZETA — Pepperdine College - 4		Fred Casmir	Los Angeles
ETA — San Diego State College - 4		Fred Sanders	San Diego
THETA — Pasadena College - 4		Judith Williams	Pasadena
IOTA — California State Univ. - 4		Gilbert F. Nykodym, II	Chico
LAMBDA — California State Univ. - 4	Gwen Rath	Michael P. Kelley	Los Angeles
MU — Humboldt State College - 4	Richard Rodeman	Herschel L. Mack	Arcata
NU — Fresno State University - 4		Hal W. Bochinn	Fresno
XI — Loyola University - 4		George A. Schell	Los Angeles
OMICRON — California State Univ. - 4	John Kochran	John Tagg	Northridge
RHO — California State Poly. Univ. - 4		D. L. Miller	Pomona
SIGMA — California Western Univ. - 4			San Diego
TAU — California State College - 4	Larry Medcalf	John E. Baird	Hayward
UPSILON — University of California - 4		Fred Stripp	Berkeley
PHI — Sacramento State College - 4		Michael Dues	Sacramento
CHI — Stanislaus State College - 4	Jim Austin	Richard S. Lucas	Turlock
COLORADO			
ALPHA — Colorado State Univ. - 1	Steve Teumer	William A. Haskins	Fort Collins
BETA — Univ. of Northern Colorado - 1	Ken Bell	Robert Trapp	Greeley
GAMMA — Western State College - 1	Jody Like	Joseph Ferro	Gunnison
DELTA — Adams State College - 1		George Lewis	Alamosa
EPSILON — Southern Colorado State College - 1		Don R. Swanson	Pueblo
ZETA — Metropolitan State College - 1		Judith Wallace	Denver
CONNECTICUT			
BETA — Southern Conn. State College - 11	Ed Marcarelli	Set Hawkins	New Haven
GAMMA — Central Conn. State College - 11	Steven P. Bardsley	Paul Wenger	New Britain
FLORIDA			
BETA — Stetson University - 9		Ronald L. Baugh	DeLand
GEORGIA			
DELTA — Georgia Southern College - 9	M. Lynn Stevens	Dr. Carolyn Quinn	Statesboro
IDAHO			
ALPHA — College of Idaho - 10			Caldwell
GAMMA — Idaho State University - 10	Michelle Morrison	Bill Corbin	Pocatello
DELTA — Northwest Nazarene College - 10		Marilyn Thompson	Nampa
EPSILON — Boise State College - 10	Rich Jones	James B. DeMoux	Boise

ILLINOIS

ALPHA — Illinois Wesleyan Univ. - 3	Julius Frazier	Marie J. Robinson	Bloomington
BETA — Eureka College - 3		Donald E. Littlejohn	Eureka
DELTA — Bradley University - 3	Gene Alesadndrini	George Armstrong	Peoria
ZETA — Monmouth College - 3	Pamela Kirichkow	Dr. John Foxen	Monmouth
THETA — McKendree College - 3			Lebanon
IOTA — North Central College - 3		Glenn Reddick	Naperville
MU — Wheaton College - 3		Edwin A. Hollatz	Wheaton
NU — Western Illinois Univ. - 3		Marcia Mulkey	Macomb
XI — Augustana College - 3	Gary Laatsch	Robert Swanson	Rock Island
PI — Northern Illinois Univ. - 3		M. Jack Parker	DeKalb
RHO — Principia College - 3		Ian D. Burman	Elsah
SIGMA — Eastern Illinois Univ. - 3		Ellwood Tame	Charleston
TAU — Millikin University - 3		Arthur B. Hopper	Decatur
UPSILON — Southern Illinois Univ. - 3	Cliff Jones	Marvin Kleinau	Carbondale
PHI — Illinois College - 3	Ted Dennis	Raymond Ford	Jacksonville
CHI — Greenville College - 3		Philip E. Lueck	Greenville
OMEGA — Olivet Nazarene College - 3		Athel McCombs	Kankakee
ALPHA ALPHA — Elmhurst College - 3		Donald Juday	Elmhurst
ALPHA GAMMA — Southern Illinois Univ. - 3	Jeff Burns	Dan R. Salden	Edwardsville

INDIANA

ALPHA — Franklin College - 7		Mary MacNiven	Franklin
------------------------------	--	---------------	----------

IOWA

BETA — Central College - 2	Pamela Frantz	Bette Brunsting	Pella
DELTA — Morningside College - 5	Doug Skarin	Don Rybacki	Sioux City
EPSILON — Simpson College - 2		R. J. deLaubenfels	Indianola
ETA — Upper Iowa College - 8	Kathy Krewer	Janice Reinicke	Fayette
THETA — Coe College - 2	Mark Robertson	Ted L. Reid	Cedar Rapids
IOTA — Westmar College - 5	Douglas Brenner	James Fletcher	LeMars
KAPPA — Buena Vista College - 5		John Madsen	Storm Lake
MU — Drake University - 2		John A. Johnson	Des Moines
NU — William Penn College - 2		D. Barry Moranville	Oskaloosa
XI — Luther College - 8		Marilyn Hoen	Decorah
PI — Northwestern College - 5		Theora England	Orange City

KANSAS

ALPHA — Ottawa University - 1	Randy Lake	Michael Twedt	Ottawa
BETA — Washburn University - 1		Charles Fulcher	Topeka
DELTA — Southwestern College - 1	Cathy Graber	Gary Horn	Winfield
ZETA — Kansas State Teachers College - 1	Sharon Mattox	David L. Matheny	Emporia
ETA — Kansas Wesleyan Univ. - 1		D. Wayne Montgomery	Salina
THETA — Kansas State College - 1	Verna Page	H. Francis Short	Pittsburg
IOTA — College of Emporia		Celestine Evans	Emporia
KAPPA — Baker University - 1		Duane V. Smith	Baldwin City
LAMBDA — Sterling College - 1	William Detter	Clayton C. Campbell	Sterling
MU — Bethany College - 1		Robert L. Richey	Lindsborg
NU — Fort Hays State College		J. Dan Rothwell	Hays
XI — Bethel College - 1		Ada Mae Haury	North Newton
OMICRON — McPherson College			McPherson

KENTUCKY

ALPHA — Georgetown College - 9	John Marquette	Margaret Greynolds	Georgetown
--------------------------------	----------------	--------------------	------------

LOUISIANA

ALPHA — Louisiana College - 6		Verne R. Kennedy	Pineville
BETA — Centenary College - 6			Shreveport
GAMMA — Univ. of Southwestern Louisiana - 6	Herb Whitaker	Ronald S. McCrory	Lafayette
DELTA — Louisiana Tech. Univ. - 6	Trish Spessard	Mary F. Beasley	Ruston
EPSILON — Northwestern State Univ. - 6		DeAnn O. Dawes	Natchitoches
ZETA — Southeastern Louisiana Univ. - 6		Win Welford	Hammond
ETA — McNeese State Univ. - 6	Mark Broussard	W. J. Casey	Lake Charles
THETA — Northeast Louisiana Univ. - 6		James W. Parkinson	Monroe

MAINE

BETA — University of Maine - 11	Maryann Hartman	Orono
---------------------------------	-----------------	-------

MARYLAND

ALPHA — Towson State College - 11	Patrice Buzzanell	Phyllis Bosley	Baltimore
BETA — Frostburg State College - 11	Ken Braitman	Michael J. Wallinger	Frostburg

MASSACHUSETTS

BETA — Bridgewater State College - 11	Cindy Berryman	Susan J. Miskelly	Bridgewater
GAMMA — Tufts University - 11		Robert Baker	Boston

MICHIGAN

BETA — Olivet College - 7		Robert C. Fischer	Olivet
GAMMA — Hope College - 7	Gary VanderVen	Karen Gritzmacher	Holland
ETA — University of Detroit - 7		Charles A. Dause	Detroit
THETA — Central Michigan Univ. - 7		Gilbert Rau	Mount Pleasant
IOTA — Ferris State College - 7	Kristie Brand	Dudley D. Cahn	Big Rapids
KAPPA — Northern Michigan Univ. - 7	John Dobel	Barry K. Spiker	Marquette
LAMBDA — Detroit Inst. of Tech - 7		Don Johannes	Detroit
MU — Adrian College - 7		Roger Wallace	Adrian

MINNESOTA

ALPHA — Macalester College - 8		Scott Nobles	St. Paul
BETA — St. Olaf College - 8	James Aune	James W. Pratt	Northfield
GAMMA — Gustavus Adolphus College - 8		John E. Braun	St. Peter
DELTA — Hamline University - 8		M. R. Hagan	St. Paul
EPSILON — College of St. Thomas - 8		James C. McCarthy	St. Paul
ZETA — Concordia College - 8	Cynthia Peterson	David Thomas	Moorhead
THETA — St. Mary's College - 8		Mona McMahon	Winona
IOTA — Univ. of Minnesota - 8		Joyce V. Flory	Duluth
KAPPA — Moorhead State College - 8	Kaye Snell	Hazel Scott	Moorhead
LAMBDA — St. John's Univ. - 8			Collegeville
MU — Southwest Minn. State College - 8	Joyce Carey	Robert A. Ridley	Marshall
NU — Bethel College - 8	Daniel Nelson	Duane Stanley	St. Paul
XI — Winona State College - 8		Brice J. Wilkinson	Winona

MISSISSIPPI

ALPHA — Millsaps College - 9		Robbie Bell	Jackson
BETA — Mississippi State Univ. - 9		Sid Hill	State College
GAMMA — Mississippi State College for Women - 9	Lydia Hodges	Marilyn F. Norris	Columbus
EPSILON — Mississippi College - 9		Orvel Hooker	Clinton
ZETA — Delta State College - 9		Andrew M. Jones	Cleveland
ETA — William Carey College - 9		Jim Heflin	Hattiesburg

MISSOURI

ALPHA — Westminster College - 2		Roy Leeper	Fulton
GAMMA — Central Methodist College - 2		Mary Ann Worthington	Fayette
DELTA — William Jewell College - 2	John Shank	George A. Flanagan	Liberty
ZETA — Culver-Stockton College - 2	Alan Gatewood	G. W. Cartwright	Canton
ETA — Central Missouri State Univ. - 2	Ruth Weller	James J. Floyd	Warrensburg
THETA — Northeast Missouri Univ. - 2	Connie Graham	C. Thomas Draper	Kirksville
IOTA — Southeast Missouri State Univ. - 2	Mike Bakewell	Tom Harte	Cape Girardeau
KAPPA — Northwest Missouri State Univ. - 2		Lincoln Morse	Maryville
NU — Drury College - 2		T. C. Winebrenner	Springfield
XI — Rockhurst College - 2	Fred Dorchardt	John R. Harrison	Kansas City
PI — Univ. of Missouri at Kansas City - 2		Walter H. Murrish	Kansas City
RHO — Evangel College - 2	Robert G. Smith	Neil Eskelin	Springfield
SIGMA — Southwest Baptist College - 2	Sam Dyle	Bob Derryberry	Bolivar

MONTANA			
ALPHA — Rocky Mountain College - 10	Clyde Young	Robert H. Lyon	Billings
BETA — Montana State Univ. - 10	Nick Murnion	L. A. Lawrence	Bozeman
GAMMA — Eastern Montana College - 10	Virginia Fischer	Larry K. Hannah	Billings
DELTA — Carroll College - 10		Harold A. Smith	Helena
EPSILON — College of Great Falls - 10		Tom O'Brien	Great Falls
ZETA — University of Montana - 10	David Fjosee	Buford A. Crites	Missoula
NEBRASKA			
ALPHA — Nebraska Wesleyan Univ. - 1		Alice Jaswal	Lincoln
GAMMA — Doane College - 1	Will Hyde	Richard B. Gartrell	Crete
DELTA — Hastings College - 1	Ann Atkins	Dale E. Black	Hastings
ZETA — Kearney State College - 1	Anne Schuman	Mary Anne Adams	Kearney
ETA — Chadron State College - 1	Janice Tiensvold	Walter J. McCormick	Chadron
THETA — Univ. of Nebraska at Omaha - 1	Jim Sherrits	Duane Aschenbrenner	Omaha
IOTA — Wayne State College - 1		Dan Leonard	Wayne
KAPPA — Midland College - 1		Charles Carlson	Fremont
NEVADA			
ALPHA — Univ. of Nevada at Las Vegas - 4			Las Vegas
NEW JERSEY			
ALPHA — Monmouth College - 11	Randall Seiler	William A. Yaremchuk	Long Branch
BETA — Newark College of Engr. - 11	Mike Khattar	Clarence Johnson	Newark
NEW MEXICO			
ALPHA — New Mexico State Univ. - 4		Phil McFarland	Las Cruces
BETA — Eastern New Mexico Univ. - 6	Kim Caswell	Timothy M. Ashmore	Portales
NEW YORK			
ALPHA — Ithaca College - 11		Franklin E. Sharp	Ithaca
BETA — State University College - 11	Robert Dunptry	Carl Flaningam	Geneseo
DELTA — State Univ. of New York - 11	Jerold Hoffman	Billy Reed	Brockport
EPSILON — Plattsburgh State Univ. - 11	Edward Harris	A. R. Montanaro, Jr.	Plattsburgh
NORTH CAROLINA			
EPSILON — Appalachian State Univ. - 9		Howard Dorgan	Boone
ZETA — Pfeiffer College - 9	Bob Kuhn	Donald C. Jackman	Misenheimer
NORTH DAKOTA			
BETA — North Dakota State College - Minot - 5		Dan R. Mathis	Minot
GAMMA — Dickinson State College - 5		Winifred B. Stump	Dickinson
DELTA — North Dakota State Univ. - 5		E. James Ubbelohde	Fargo
EPSILON — Mayville State College - 5	David Olson	Glenn Stocker	Mayville
OHIO			
ALPHA — Baldwin Wallace College - 7	Terry Fay	James A. Ross	Berea
BETA — Heidelberg College - 7	Kinsely Myce	Robert Smither	Tiffin
DELTA — University of Akron - 7		John A. Mendiola	Akron
EPSILON — Otterbein College - 7	Pam Hill	Jim Grissinger	Westerville
ZETA — Marietta College - 7		K. Wayne Wall	Marietta
ETA — Bowling Green State Univ. - 7		Raymond Yeager	Bowling Green
IOTA — Kent State Univ. - 7	Karen Brown	Carl Moore	Kent
LAMBDA — University of Dayton - 7		B. J. Knittel	Dayton
MU — Mount Union College - 7		Richard Machlan	Alliance
NU — Youngstown University - 7		Daniel J. O'Neill	Youngstown
XI — Ohio Northern University - 7		Jerry Lee	Ada
OMICRON — Malone College - 7		David J. Blossom	Canton
PI — Defiance College - 7	Jane Bayles	Jan J. Younger	Defiance
RHO — Rio Grande College - 7		John Graham	Rio Grande
SIGMA — Wright State Univ. - 7		Donald Felty	Dayton

OKLAHOMA

ALPHA — Oklahoma State Univ. - 6		Fred Tewell	Stillwater
GAMMA — Oklahoma Baptist Univ. - 6	Patricia L. Smith	Doris Simpson	Shawnee
EPSILON — Oklahoma City Univ. - 6		Robert J. Varga	Oklahoma City
ETA — East Central State College - 6	Betsy Ballard	R. A. Payne	Ada
THETA — Southeastern State College - 6		C. W. Mangrum	Durant
IOTA — Central State College - 6	Stephanie Pierce	Douglas Duke	Edmond
KAPPA — Phillips University - 6		Karen S. Smith	Enid
MU — Southwestern State College - 6		Jack Shaw	Weatherford
NU — Panhandle State College - 6		James H. Roach	Goodwell
XI — Bethany Nazarene College - 6		Wayne Murrow	Bethany

OREGON

ALPHA — Linfield College - 10	Louann Johnson	Craig Singletary	McMinnville
BETA — Lewis & Clark College - 10		Steve Hunt	Portland
GAMMA — Portland State Univ. - 10	Kathy Dindia	Jean Monahan	Portland
DELTA — Univ. of Portland - 10			Portland
EPSILON — Southern Oregon College - 10	Brenton Smith	JoAnn Patton	Ashland

PENNSYLVANIA

ALPHA — Grove City College - 11		William C. Teufel	Grove City
DELTA — Bloomsburg State College - 11		Harry Strine	Bloomsburg
EPSILON — Geneva College - 11		Ross Andrusko	Beaver Falls
ZETA — California State College - 11	Kay Johnston	Patrick Miller	California
ETA — Clarion State College - 11		Roger A. Hufford	Clarion
THETA — East Stroudsburg State College - 11	Philip Morrissey	Warren A. Gasink	East Stroudsburg
IOTA — West Chester State College - 11	Sharyn Graver	A. G. Kershner	West Chester
KAPPA — Lock Haven State College - 11	Donna Riley	Charles Bromberg	Lock Haven
LAMBDA — Mansfield State College - 11	Fred Scholbert	Michael Leiboff	Mansfield
MU — Thiel College - 11	Susan Mitchell	Sonya Wilt	Greenville

SOUTH DAKOTA

ALPHA — Dakota Wesleyan Univ. - 5	Kenrad Pederson	Mike Turchen	Mitchell
BETA — Huron College - 5		Basil D. Kolb	Huron
GAMMA — Yankton College - 5		A. P. Schenk	Yankton
DELTA — South Dakota State Univ. - 5		Harold Widvey	Brookings
EPSILON — Sioux Falls College - 5	Larry Plucker	Mary Patterson	Sioux Falls
ZETA — Northern State College - 5	Lynette Charboneau	James Zeman	Aberdeen
ETA — Augustana College - 5	Steve Ringer	Jerry Winsor	Sioux Falls
THETA — Dakota State College - 5		Orval Van Deest	Madison
IOTA — Black Hills State College - 5		Arthur V. Prosper	Spearfish
KAPPA — Southern State College - 5	Charlotte Mitchell	Robert A. Dickey	Springfield
LAMBDA — South Dakota School of Mines - 5		Cathryn A. Spelts	Rapid City

TENNESSEE

ALPHA — Maryville College - 9		Blair E. Beasley, Jr.	Maryville
DELTA — Tennessee Tech Univ. - 9		Robert H. Woodland	Cookeville
EPSILON — Carson-Newman College - 9		Richard Finton	Jefferson City
ZETA — Middle Tenn. State Univ. - 9		James T. Brooks, Jr.	Murfreesboro
THETA — David Lipscomb College - 9	Greg Hardeman	Carroll Ellis	Nashville
IOTA — Tennessee Wesleyan College - 9		Lynn Whiting	Athens
KAPPA — Tennessee State Univ. - 9		Sandra Holt	Nashville
LAMBDA — Austin Peay College - 9	Joe Calloway	Mike McDonald	Clarksville

TEXAS

GAMMA — East Texas State Univ. - 6	Henry Duane Peck	C. L. Farr	Commerce
DELTA — Howard Payne College - 6		Roy Ambrester	Brownwood
EPSILON — Mary Hardin Baylor College - 6		Charles G. Taylor	Belton

ZETA — Texas Christian University - 6	Debbie Zerjav	Jim Luck	Fort Worth
ETA — North Texas State Univ. - 6		Ben Chappell	Denton
THETA — Hardin Simmons Univ. - 6		Jeny Reynolds	Abilene
IOTA — Baylor University - 6		Lee R. Polk	Waco
MU — Stephen F. Austin State College - 6		Don Graham	Nacogdoches
NU — Texas A & I Univ. - 6	Roxanne Williamson	Lawrence Ray Smith	Kingsville
OMICRON — University of Houston - 6		Bill Henderson	Houston
PHI — Lamar University - 6	Dennis Vercher III	Mary Alice Baker	Beaumont
CHI — Midwestern University - 6	William S. Julian	Dencil R. Taylor	Wichita Falls
PSI — Univ. of Texas at El Paso - 6	David Davis	Penny M. Byrne	El Paso
OMEGA — West Texas State Univ. - 6	Charles Crow	Guy Paul Yates	Canyon
ALPHA ALPHA — Texas A & M Univ. - 6		Russell E. Usnick	College Station
ALPHA BETA — Texas Lutheran College - 6	Bill Klingemann	Otis Baskin	Sequin
ALPHA GAMMA — McMurry College - 6		Muriel Burress	Abilene
ALPHA DELTA — Houston Baptist College - 6	Thomas C. Sanders	Rex R. Fleming	Houston
ALPHA EPSILON — Angelo State Univ. - 6	Cathy Stephenson	Helen Schafer	San Angelo
ALPHA ZETA — Pan American Univ. - 6		G. McLemore	Edinburg
ALPHA ETA — Univ. of Texas at Arlington - 6		Carroll Hickey	Arlington

VERMONT

ALPHA — Norwich University - 11		Keith A. Gould	Northfield
---------------------------------	--	----------------	------------

VIRGINIA

BETA — Old Dominion University - 9	Doug Hardy	Douglas Trank	Norfolk
------------------------------------	------------	---------------	---------

WASHINGTON

ALPHA — Univ. of Puget Sound - 10	Kathy Hemerick	Gary L. Peterson	Tacoma
BETA — Seattle Pacific College - 10		Paul Rosser	Seattle
DELTA — Whitworth College - 10		Pat Bories	Spokane
EPSILON — Pacific Lutheran Univ. - 10	Ray Haecox	Theodore O. H. Karl	Tacoma
ZETA — Western Washington Univ. - 10		Larry Richardson	Bellingham
ETA — St. Martin's College - 10		Keith Larkin	Olympia
THETA — Whitman College - 10	Al Lyon	Remy Wilcox	Walla Walla
KAPPA — Eastern Wash. State College - 10	Jim Nelson	Larry Kraft	Cheney

WEST VIRGINIA

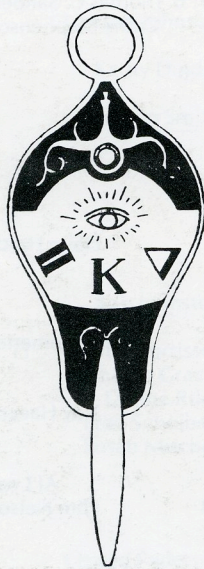
BETA — Marshall University - 7	Bruce Tucker	Mary Ann Murphy	Huntington
GAMMA — Morris Harvey College - 7		Roselyn L. Freedman	Charleston
DELTA — Shepard College - 7		Russell Marks	Shephardstown

WISCONSIN

ALPHA — Ripon College - 3	Richard Deck	Frank T. Alusow	Ripon
BETA — Carroll College - 3	Stephen F. Witort	Bruce R. Metzler	Waukesha
GAMMA — Univ. of Wisconsin - 8	Brian Steffel	Steve Spear	Oshkosh
DELTA — Univ. of Wisconsin - 8	Barb Corey	J. P. Carstens	River Falls
EPSILON — Univ. of Wisconsin - 3	Paul Stamm	Dick Haven	Whitewater
ZETA — Univ. of Wisconsin - 8		Grace Walsh	Eau Claire
ETA — Univ. of Wisconsin - 3		James N. Holm, Jr.	Platteville
THETA — Carthage College - 3	Joel Bleeke	Ross Gearhart	Kenosha
IOTA — Univ. of Wisconsin - 8	Diane Clotier	Sandra Kolar	Superior
KAPPA — Stout State Univ. - 8		Howard S. Heise	Menomonie
LAMBDA — Univ. of Wisconsin - 8	Mary Brown	Jack D. Starr	LaCrosse
MU — Univ. of Wisconsin - 8		Fred J. Kauffeld	Stevens Point

ALUMNI CHAPTERS

Wisconsin State University - 3	John S. Cease	Whitewater
Bradley University - 3		Peoria
William Jewell College - 2	Noni Guilfoil	Liberty
Adams State College - 1		Alamosa
Illinois Wesleyan University - 3		Bloomington
Augustana College - 5		Sioux Falls



“... If you naturally possess rhetorical abilities, you will be a distinguished orator by adding science and practice; but in whichever of these you are deficient, in that respect you will be imperfect.”

Plato, *Phaedrus*