

# THE FORENSIC

OF PI KAPPA DELTA

---

---

ALFRED WESTFALL, Editor

G. W. FINLEY, Business Manager

---

---

SERIES 19

MAY, 1934

NUMBER 4

---

---

The presence of the college presidents who attended the national convention added a dignity to the gathering which all members appreciate. Two presidents, Robert E. O'Brian of Morningside and Franc L. McCluer of Westminster, were present through the whole convention. President O'Brian worked with his students, coaching them for their contests. President McCluer spoke at one of the dinners and served on a number of committees. He carried his full share of the long and arduous work of the charter committee. His knowledge of college ratings was invaluable to the committee. He also served on the FORENSIC committee.

President Turek of Centre College was at the convention one day and gave an inspiring address at the dinner Monday evening. While college duties called President Arthur Braden of Transylvania College away part of the week, he attended the convention when he could.

All members of Pi Kappa Delta unite in expressing to these busy men an appreciation of their interest. The addresses they made were good evidence of their right to admission to a forensic convention. A cordial invitation is extended to them to return again. It is hoped that other college presidents will favor the society in the future.



For the splendid service he has given Pi Kappa Delta, we say thank you to our retiring president, Prof. H. D. Hopkins. He had served the society for a number of years before he was elevated to the presidency. During his term of office he gave generously and wholeheartedly of his time and energy in the interests of the society. His good judgment and leadership were reflected in the splendid organization of the convention and the smoothness with which it functioned. He paved his pathway to success with friendships. When

students in our one hundred fifty chapters read these lines, they will think of "Hoppy" with affection.

He has handed the gavel on to other hands. As he lays down his presidency, he carries with him the gratitude, affection, and good wishes of those he served so well during his term of office. The society has this consolation. As Historian he remains a member of the National Council and we shall continue to profit by his good judgment and level-headedness.

"Earth would never touch her worst, were one in fifty such as he."



As far as the author can determine the Tenth National Convention of Pi Kappa Delta held in Lexington, Kentucky, the first week in May was the largest and most representative college gathering held in the United States this year. No other organization was able to bring together seven hundred representatives from almost one hundred fifty educational institutions representing Maine, California, Washington, Florida, and most of the states between. It is a cause for rejoicing to the society. Forensics are demonstrating their importance in American college life. The society has grown to maturity and is still growing.

But it is not the size that makes Pi Kappa Delta what it is. Size brings with it problems and dangers. Already warnings have been sounded and calls to limit the size of our convention and tournaments have been heard. It is well to have brought the seven hundred to Lexington. But whether it was worth while or not depends upon what was done here. If each delegate carried back with him an inspiration which will result in better forensics, if an enthusiasm for better student activities is kindled upon the campus of each of the one hundred forty institutions represented there, the convention justified its size. Let us not boast of how large it was, but of what we contributed to it and got out of it.

Three hundred years ago Ben Johnson wrote,

It is not growing like a tree  
In bulk, doth make men better be;  
Or standing long an oak, three hundred year,  
To fall a log at last, dry, bald, and sear:



It was a theory of former president Lowell of Harvard that the younger a man graduated from college, the better chance he had to succeed. In support of his theory he offered a study of



Harvard graduates grouped according to age. The youngest age group, those phenomenal youngsters who finished college at sixteen and seventeen, had the highest scholarship and had produced the most outstanding men. The group achievement declined each year the age advanced.

Attendance at the convention tournaments impressed one with the fact that intellectual maturity and forensic success do not depend upon age. At Tulsa two seventeen year old girls from Hastings College won the women's debate tournament and William D. Snow, an eighteen year old senior from the University of Toledo, won the men's extempore speaking contest.

Youth triumphed again at Lexington. Laura Kneidl, winner of the women's extempore contest, is only eighteen. The men's oratorical contest was won by an eighteen year old sophomore, John Pease. Steven Keane, who debated in the semi-finals, will not be old enough to vote in the next presidential election. St. Thomas was carried into the semi-finals in men's debate upon the shoulders of two nineteen year old sophomores. Florence Capkey, third in extempore, is graduating from college at twenty. Nineteen year old Willard Pedrick captured first honors in men's extempore.

We do not have the ages of many of the other contestants. Some of the other winners may also have been youngsters. Undoubtedly eighteen and twenty year old seniors are not very plentiful, yet they seem to be winning more than their share of honors. It is the day of youth in forensics as well as in other things.



Undoubtedly the most professional looking coach at the convention was our National Historian and immediate past president, George R. R. Pflaum. He is one of the few men to whom a beard is becoming. Nichols is another. He and Westfall appeared at one of the dinners in an imitation of Pflaum's natural growth. Nichols received so many compliments on his whiskers that he expressed regret that he couldn't grow and wear some of his own. Unfortunately his whiskers do not have the vigorous color of Pflaum's.



One of the high points of the Tulsa convention was Nichols' "Gosh" speech. Mundt's speech at the big banquet in which he attempted to show what the people of South Dakota thought of J. D. Coon deserves to rank along with Nichols'.

## CONVENTION ECHOES

---

What a splendid effort Prof. Orton and his assistants made to solve the judge problem. And they very nearly solved it. I have but one suggestion: That at the headquarters hotel at the 1936 Convention a special room be set apart which those qualified to act as judges may have as headquarters, and to which they may return after each contest. They should be asked to register as available for the next round and the person in charge should know where to locate them when needed. Prof. Ewing made an important remark during the rush to get judges by some of those in charge of a certain division of the Tournament. He said, "Instead of assigning a certain number of judges to a given contest and posting the list, I just went out in the lobbies and rounded up the required number and told them to report to the rooms where the contests they were to judge were to be staged. I got plenty of judges. When a number of judges were reported as having failed to show up I just went out and found numerous available judges in the lobby of the hotel who were quite ready to serve had they been asked."

So the one thing yet to be provided in connection with the ever-present judge problem is a room where they can all report and where they can be found when needed. An attractive and comfortable room or office, preferably on the main or mezzanine floor, well provided with chairs, a free telephone, and duly labeled "Judge's Headquarters," might prove to be a necessary adjunct to Prof. Orton's splendid preliminary organization and provide the means of utilizing regularly the supply of judges we really have. This plan, with the requirement that each institution entering any of the contests of the Tournament must bring at least one qualified judge, might solve completely the one big difficulty of our growing Convention.

OWEN P. McELMEEL,  
College of St. Thomas.

---

Did you know that the McCarty plan of Extempore Speaking (that is what they call it in the Province of the Sioux) was used at our Lexington convention? The question and answer



phase of the extempore speaking plan as used in the South Dakota college extempore contests for more than ten years, and adopted at the Tiffin convention and used in all national tournaments since that time, was devised by our National President. It was used at South Dakota State College for the first time in 1922.

This plan was adopted by the high schools of South Dakota at the State Education Association last November.

◆

"I consider the last convention the best of the three I have attended. Better organization, better judging, less criticism, fewer conflicts, all combined to make it a highly successful tournament. The pleasure jaunt around the Kentucky 'farms'—THE DELEGATES SHOULD SEE A SOUTH DAKOTA FARM—no smell of violets and red roses about them—was a happy feature. I think Pi Kappa Delta made many friends, few enemies in its 1934 convention. All credit to those who administered so wisely and so well."—KARL E. MUNDT.

◆

"The contest at Lexington was the first national convention that I have ever attended. I had a wonderful time. There are only a few things which I can criticize. I did think some of the judges were lax in their punctuality and attendance at the contests. One could easily tell which were the students by the way they got to the contests on time—as if they feared a visit to the dean. The other thing which I should criticize was the length of the banquet. It was excellent—for the first three hours.

"I could commend the choice of the convention city and the hospitality which Transylvania College, the Lafayette Hotel, and the entire city showed to us during our stay. I noticed too the friendliness that every delegate seemed to have toward everyone else. Pi Kappa Delta is truly one big honor family. Even the convention leader stopped to speak to us ordinary mortals. I count the acquaintances and friendships made at the convention among its greatest benefits.

"It was certainly thrilling to realize, as I looked down the rows of tables at the banquet, that I belonged to such a nationwide group of live, active people. I shall always have fond memories of the Lexington convention."—LAURA E. KNEIDL, Kansas Lambda.

Florida Alpha, Rollins College, under the direction of Prof. Harry Raymond Pierce and the Department of Speech Arts, conducted the first of what it expects to be Annual Speech Tournaments, April 20. Four Florida high school students were awarded five hundred dollars each to be applied towards the Unit-Cost at Rollins. Interest has been stimulated in high schools all over Florida. May 18 Florida Alpha plans to initiate four students and four faculty members. This will bring the active enrollment of the chapter up to eighteen.—H. R. PIERCE.

◆

“For me the banquet was the high light of the convention.”  
EGBERT RAY NICHOLS, California Alpha.

◆

“The greatest danger that threatens the success of future conventions is the group of scalp-hunting coaches who, I am told, attempt to manipulate judge assignments and interfere with schedules in the interests of their own teams. Some of us coaches could take lessons in sportsmanship from our contestants.”  
CHAS. S. TEMPLER, Minnesota Delta.

◆

“I believe we should have a dead line for entry to the contests and then stick to it. I sent the entries for my girls late. I should not have objected if they had been refused, but I knew from past experiences at other conventions that the dead line was rather flexible.

“I have seen a good many conventions, but liked this the best. We expect to send a full quota to Houston. We plan to get a twelve passenger bus pretty soon. It should be about the right size for the trip to Texas.”

J. R. PELSMA, Kansas Theta.

◆

“I think we should find a way, perhaps by eliminating petitioning chapters from competition, to reduce the size of the tournaments. Every institution participating should bring along some one competent to judge and willing to do his share of it.”

LEROY T. LAASE, Nebraska Delta.



"I suggest that we attempt through some means to have the last day less crowded. It seems to me that the finals in oratory should be held in the evening, should be a little more formal, and should be better advertised, rather than crowded into the last day. Things are so crowded at the convention that I am not sure this change can be accomplished.

"I feel that the 1934 convention was one of the best—no, I'll say the best—that I've ever attended. The attitude of the students was unusually businesslike. We are already planning for the 1936 convention."

EDITH B. WHITAKER, Iowa Epsilon.

◆

"The most outstanding thing about the national Pi Kappa Delta convention is the fact that about six hundred choice young men and women from all parts of the United States gathered to discuss current social problems in extempore speaking, oratory, and debate. While gatherings of this kind continue, the country will never lack able and high minded leaders. These conventions are certain to exert a tremendously worthwhile influence upon American life.

"I hope the time will come, however, when debaters will not be required to speak on both sides of the question. I regretted to see so much emphasis placed on debate strategy. When conducted on the right plane, debating helps to develop the right type of social leadership; but when undue emphasis is placed on strategy, debating may lead to insincerity; it may even contribute to the making of crooks and gangsters. Many an unscrupulous criminal lawyer was doubtlessly very skillful in debate strategy while in college."

FRED S. SORRENSON, Illinois Eta.

◆

"The business sessions should be held at the opening of the convention, or at times when the tournaments do not crowd into the business session too much. The business sessions are extremely important to the society. Too many hasty ideas are presented. There is little time for careful consideration and thought. There is under our present practice too much danger of hasty legislation which may cause grief and worry later."

GEORGE R. R. PFLAUM, Kansas Zeta.

"I enjoyed especially the address of Dr. Ewbank at the final banquet. I do not appreciate the apparent unwillingness with which new chapters of Pi Kappa Delta were granted. Why not grant chapters more freely, but check more rigidly at each convention?"

WILLARD PEDRICK, Iowa Zeta.

◆

"Neither Augustana men nor women lost a decision on the affirmative. I wish we could have used our affirmative case in the finals of the men's debate. Some dissatisfaction was expressed when the decision was announced at the final debate. I feel that the decision went where it belonged. We were not disgruntled about it. We did hope that our men would do better than they did, but fatigue and strain had taken too great a toll.

"At future tournaments I hope it will be possible to arrange schedules so that women, especially those doing double duty, can stand up under it. I realize that this is difficult. Also oratory is more than presentation, and I hope it will be possible to get judges who profess to know something about the standards of oratory. A number of the judges who were pressed into service themselves insisted that they did not know much about judging oratory."

HUGO A. CARLSON, South Dakota Eta.

◆

"In case any bouquets are handed out for work on convention committees, I hope you will not fail to note the fine work of Harold LeVander of Macalester on the men's extempore committee."

GEORGE V. BOHMAN, Dakota Alpha.

◆

Among the attractions which interested the delegates in and around Lexington and on the way to and from there were the following: The Bluegrass region; the fine horses, especially Man o' War; the wonderful farms, such as E. R. Bradley's Idle Hour, and the Dixiana Farm; the tobacco plants; Ashland, the home of Henry Clay; Mary Todd Lincoln's old home; the home of General Morgan; Hodgenville, Lincoln's birthplace; Harrodsburg, the oldest city in Kentucky; The Old Kentucky Home where Stephen Foster wrote his famous song; Bardstown, and the old Cathedral with its million dollar paintings; the state capitol at Frankfort; Mark Twain's birthplace in Hannibal, Missouri; Vincennes, Indiana; and other places too numerous to mention.



John A. Shields' vivid account of the organization of Pi Kappa Delta was intensely interesting to the delegates attending the convention. President Hopkins is to be commended for his good judgment in securing President H. L. Ewbank of Delta Sigma Rho for the final banquet. His presence with us was a splendid gesture of fellowship from our senior society. We all shed a tear for his uncle's faithful dog.

◆

National Counsel J. D. Coon and the editor of the FORENSIC, Alfred Westfall, claim to be the only two delegates who got to go through Henry Clay's old home, which is not open to the public. It took two trips out to it and a lot of real forensic talent to effect an entrance. It was a marvelous place to visit, full of historical associations, pictures of Clay and his associates, and rare antiques.

◆

"These racing stables are playthings for the rich," explained one Lexington man. "Their owners don't vote much for school taxes. They don't want all these local people educated too much. You see, after a boy gets so much education, he isn't going to be satisfied to spend his life waiting on a horse."

◆

The presentation at the final banquet of the roses and honorary membership in Pi Kappa Delta to Mrs. G. W. Finley was a fine gesture on the part of the society. She has served Pi Kappa Delta a long time and her services, while much appreciated, have not been adequately acknowledged. George is our National Secretary, but Mrs. Finley is his "right hand man."

◆

The convention was fortunate in the speakers it had for its evening meetings. President Turek of Centre led off Monday evening with a fine brand of oratory. He gave an inspiring address on social questions. President McCluer's address on peace was logical and startling in its revelations. We can understand why he was nicknamed "Bullet" when he was a college debater. Our own Karl Mundt gave a very pleasing demonstration of what an entertaining speech can be. Prof. T. M. Beaird, the man in charge of state high school debate tournaments, spoke from a real appreciation of the value of forensics. Better high school forensics mean better college forensics. Prof. Beaird is doing as much as any one in the United States to advance high school debating. President Ray Brown of Phi Rho Pi helped to cement the friendship between the two societies.

The official statement of the N. U. E. A. debate question for senior high schools next year is, Resolved: That the federal government should adopt the policy of equalizing educational opportunity throughout the nation by means of annual grants to the several states for public elementary and secondary education. This information was released April 30 by T. M. Beaird, University of Oklahoma, chairman of the National University Extension Association's committee on Debate Materials and Interstate Cooperation.



University of Wichita Debaters, with their coach, presenting to President Jardine the six trophy cups won by the team at the Durant, Oklahoma, meet. Left to right: Inez Crowder, Tom Croft, President Jardine, Leroy Lewis, coach, Frank Malone, and Natalie Ring.



President Roy C. Brown, of Phi Rho Pi, national Junior College Forensic Fraternity, is working with Prof. Evan Anderson of Gustavus Adolphus to arrange a radio debate between the national debate champions of Pi Kappa Delta and Duluth Junior College, winner of the Phi Rho Pi debate tournament.



Eighty-seven teams entered the Durant, Oklahoma, debate tournament. Baylor, Texas Iota, won the men's debate tournament. Wichita won first; Pittsburg Teachers, Kansas Theta, second; and Emporia third in extempore. Durant, Oklahoma Theta, won men's oratory.—*The Collegio*.



Augustana won first honors in the South Dakota state forensic meet. Yankton was second.—*The Huron Alphomega*.



"Personally I was well satisfied with the manner in which the big talk-fest was conducted. We have improved on the judging system. If we can smooth it up a little more, it will help."

JOHN BARNES, Missouri Beta.

—◆—

A number of the northern delegates who were unused to the colored people attended Negro churches Sunday evening. In one of them a trained choir of forty voices was giving Handel's "Messiah." It was some of the best Eastern music many of them had heard in years.

—◆—

That sight seeing trip with its one hundred thirty-seven cars and motorcycle escort was an inspiring sight. And did we see anything? We know now how Derby winners are produced.

—◆—

President George McCarty's rogue's gallery was the center of much interest. It was disturbing to see how natural some of those familiar faces looked in that setting.

—◆—

No team emerged from this year's tournaments undefeated. College of the Pacific, the winners of the women's debate championship, lost one decision to Hastings. Hastings, undefeated until the eighth round, lost both its debates, by the irony of fate, to the same team, George Pflaum's Kansas Teachers of Emporia. Emporia, in turn, lost two decisions to College of the Pacific.

—◆—

In the men's tournament, Colby came through six rounds undefeated, only to go down in the next two. St. Thomas ran its string of victories up to eight before it received an adverse decision. It was finally put out in the semi-finals. The two teams which met in the finals did not make such impressive starts. Augustana lost its first debate to North Carolina State. In the fifth round Gustavus Adolphus dropped a decision to Central of Missouri.

—◆—

National Counsel J. D. Coon is a Lincoln student. Hodgenville, Lincoln's birthplace, threatened to draw him away from the convention a number of times. He finally hunted up a Lexington lawyer, William H. Townsend, who is a Lincoln student and author of several works on Lincoln, including "Lincoln and His Wife's Home Town." They spent the afternoon discussing Lincoln.

# *Registration, Tenth Biennial Convention of Pi Kappa Delta*

Lexington, Kentucky, April 2-6, 1934

## ARKANSAS

**Gamma**—College of Ozarks  
Coach, Frank E.  
McAnear  
Carl Langston  
Lewis Rogers  
Ruth Garrett  
Ella Pearce

## CALIFORNIA

**Alpha**—University of  
Redlands  
Coach, E. R. Nichols  
Coach, Joseph Baccus  
Bernard Hyink  
Winfield Bristow  
Ted Hatlen  
Weston McIntosh  
Beth Botkin  
Harriet Van Osdel  
Bert Nichols  
Chas. Loring

**Gamma**—California Institute of Technology  
Bruce Beckley  
Kenneth Pitzer

**Delta**—College of Pacific  
Coach, Dwayne Orton  
Jeanet Manning  
Miriam Healey

**Epsilon**—University of  
California, L. A.  
Judith Rykoff  
Selma Mikels

## COLORADO

**Alpha**—Colorado Agricultural College  
Coach, Wilbur Moore  
Avery Bice

John McCafferty  
Louise McBride  
Josephine Bartholomew  
Jack Barrows

**Beta**—Colorado Teachers College  
Coach, Paul Ottens  
Bob Bush  
Richard Tatman  
Paul Anderson  
George Bickel  
Billy Ross  
Cora Mae Stamps  
Esther Paulette  
Norman Pixler

**Gamma**—Western State College  
Coach, Paul Soper  
Fred Kuypers  
Lloyd Griffith  
Alta Thomas  
Iola Danielson

## CONNECTICUT

**Alpha**—Connecticut Agriculture College  
Coach, Richard Attridge  
Howard Martin

## FLORIDA

**Alpha**—Rollins College  
Coach, H. R. Pierce  
Richard Shattuck  
Maurice Drel er

## IDAHO

**Alpha**—College of Idaho  
Erwin Schwiebert  
Gerald Wallace  
John Eaton

## ILLINOIS

**Alpha**—Illinois Wesleyan University  
Coach, Virgil Martin  
Royal Bartrum  
Norman Hickman  
Harold Livingston  
Fred Brown  
Dow Kirkpatrick

**Beta**—Eureka College  
Coach, O. E. Wiggins  
Raymond Russell  
Samuel Harrod

**Gamma**—Carthage College  
William Barnard  
Frank Folckemer  
Ray Shawl

**Delta**—Bradley Polytechnic Institute  
Virgil Dolen  
Charles Hall

**Zeta**—Monmouth College  
Coach, M. M. Maynard  
Wilbur Lester  
Nathalie Lytle  
Jane Hoyman  
Eva Reid  
Gertrude White  
Enid Toussaint

**Eta**—Illinois State Normal University  
Coach, C. F. Malmberg  
Coach, Fred Sorrenson  
Wendell E. Oliver  
Clifford Scott  
Glen Taylor  
J. Lewis Winegraner  
Lilith Southgate  
Barbara Turner  
Helen Campbell



Clara Rasmussen  
Mabel Claire Allen

Andrew Klynor  
Harold Schut  
Forest Dekken  
Dorothy Payne  
Helen Van Der Linden

Kathryn Pearlman  
Ruth Rouss  
Sue Lesan  
Robert Aitken

**Theta**—McKendree College  
Coach, Alleen Wilson  
Paul Meadows  
Marjorie Snow  
Pauline Lucas

**Delta**—Morningside  
College  
President, Robert E.  
O'Brian  
Parnell Mahoney  
Daryl Williams  
Pauline Belson  
Gladys Graves

**Nu**—William Penn  
College  
Coach, Marcelle Erick-  
son  
Richard Wilmeth  
Robert Rinden

**Iota**—North Central  
College  
Coach, Guy E. Oliver  
Irving Artes  
Jesse Wagner

## KANSAS

**Mu**—Wheaton College  
Coach, Herbert Moule  
Coach, Florence Cobb  
Doyle Brewington  
Charles Seidenspinner  
Harold McKenzie  
Amy Deck  
Laura Gates  
Lois Mengel

**Epsilon**—Simpson College  
Coach, Edith Whitaker  
Clovis Myers  
Don Watson  
Christy Swain  
Mary Williams  
Ruth Robinson  
Elizabeth Throckmorton  
W. Glenn Harlan  
Virginia Cook

**Alpha**—Ottawa University  
Coach, R. H. Ritchie  
Bruce Blunt  
Gustave Gabelman

**Beta**—Washburn College  
Coach, James Taylor  
Grey Dressie  
Harold Arnold  
Eugene Mahoney  
Waldo McNutt

**Nu**—State Teachers Col-  
lege, Macomb  
Coach, Harold Schory  
Richard Crabb  
Wayne Thompson  
John Oathout  
Ralph Kirkpatrick

**Zeta**—Parsons College  
Paul Pickett  
Ronald Cochran  
Willard Pedrick  
Maxine Larmore  
Mary Moorhead  
Bertha Crisswell

**Delta**—Southwestern  
College  
Coach, J. Thompson  
Baker  
Wofford Gardner  
Don Gleckner  
Tom Hamilton  
Irene Buhler  
Clay Smith  
Flora Broadie  
Mildred Pike  
Vivian Pike

## INDIANA

**Alpha**—Franklin College  
Coach, Ray Ehrens-  
berger  
James Pease  
Traber Guthrie

**Eta**—Upper Iowa Univer-  
sity  
Coach, Robert Capel  
Raymond Belknap  
Charles Antes  
Genevieve Belknap  
Margaret Van Wert

**Epsilon**—University of  
Wichita  
Coach, C. C. Harbison  
Coach, Leroy Lewis  
Tom Croft  
Frank Malone  
Natalie Ring  
Inez Crowder  
Clayton Walton  
Laura Jane Smart

## IOWA

**Alpha**—Iowa Wesleyan  
University  
Coach, J. F. Kelly  
Gordon Rhum  
Lemar Hoaglin  
Alice Talbot  
Joyce Perrin

**Theta**—Coe College  
Coach, Loren T. Jenke  
William Whipple  
Clement Curman  
Mrs. Betty Jenks

**Lambda**—Dubuque  
University  
Coach, J. Bayema  
J. E. Johnston  
F. F. Beselman  
Phyllis Ihrake  
Ruth Isebrands

**Beta**—Central College  
Coach, Frances Bailey  
Coach, Cunera Van  
Emmerik  
John Hunt

**Mu**—Drake University  
George Hamlin

**Zeta**—Kansas State Teach-  
ers of Emporia  
Dorothy Abramson  
Ida Johnson  
Henry Smith  
Charles Wagner  
Alex Daughtry

**Eta**—Kansas Wesleyan  
Coach, W. S. Adams  
Hollis Hayward  
William Springer  
Robert Lebow  
Lucille Hayman

**Theta**—Kansas State  
Teachers of Pittsburg  
Coach, J. R. Pelsma  
Irvin Luthi  
Ed Lavery  
Milton Zacharias  
Annie Lindsay  
Margaret Campbell

**Iota**—College of Emporia  
Coach, J. H. Lawrence  
Lloyd McCulley  
Keith Bondurant  
Katherine Webb  
Lucille Arnott

**Lambda**—Sterling College  
Coach, Virginia Bailey  
Alan Bowles  
Ruth Railsback  
Laura Kneidl  
Frances Tippin

**Mu**—Bethany College  
Coach, Emory K.  
Lindquist  
Kenneth L. Johnson  
Carl E. Olson  
Lois Moore  
Linda Ulrickson  
Alice James

**Kansas State Teachers of  
Fort Hays**  
Coach, James R. Start  
Vester Davidson  
Walter Park  
Lela Pitts  
June Rader

#### KENTUCKY

**Alpha**—Georgetown  
College  
Coach, Howard H. Davis  
Coach, Rena Calhoun  
John Gordon Mein  
J. R. White  
Elmer C. Masden

Roy A. Helton  
Cecil Erwin  
Richard Reiley  
Mary Gibson  
Dorothy Allphin  
Mildred Nolan  
Eleanor Swiger  
Margaret Payne  
Martha Nan McCracken  
Fannie Stoll

**Beta**—Centre College  
Wesley Carty  
James H. Munn  
Harold Walker  
J. R. Sterrett

**Gamma**—Kentucky  
Wesleyan  
Coach, T. E. McMullin  
Ernest Bean  
Olson Harrison  
Alec Spencer

**Delta**—Transylvania  
College  
Coach, D. C. Troxel  
Coach, V. F. Payne  
Omer Stubbs  
Leonard Boynton  
A. R. Robertson  
Ralph Saunders  
T. J. Mattingly  
Elizabeth Rae Claxton  
Edwina Edwards  
Alta Mae Baird

#### LOUISIANA

**Alpha**—Louisiana College  
Coach, E. O. Wood  
Aubrey Hirsch  
R. D. Hayes  
James Horton

**Beta**—Centenary College  
S. A. Steger

**Gamma**—Southwestern  
Baptist Institute  
Coach, James J. Barry  
Fenner Wadesmith  
John W. Adams

#### MAINE

**Alpha**—Colby College  
George H. Hunt

Ralph Nathanson  
Arthur W. Stetson, Jr.  
Martin Storms  
Edward John Gurney  
Harold W. Hickey

#### MICHIGAN

**Alpha**—Kalamazoo College  
Coach, Elliott Moses  
Don Hellenga  
Glen Allen, Jr.  
Ruth DeWeerd  
Eleanor Hayne

**Gamma**—Hope College  
Coach, Deckard Ritter  
Ralph Danhof  
Joe Esther  
Henry Kuizenga  
David DeWitt

**Delta**—Michigan State  
College  
Coach, J. D. Menchhofer  
Coach, O. J. Drake  
Mrs. O. J. Drake  
Robert Molloy  
Chas. R. McLean  
Arthur G. Magill  
Lela Keener  
Viva Richardson  
Marian Kish  
Claudine Burkhart

#### MINNESOTA

**Alpha**—Macalester College  
Coach, Harold LeVander  
Paul Moore  
Carl Bakinier  
Wilbur Humber  
Lois Green  
Gladys Simmons  
Alberta Bahr

**Beta**—St. Olaf College  
Coach, Arthur C.  
Paulson  
Oscar Olson  
Gail Olson  
Orville Dahl  
Judith Skogerboe  
Helen Glenn



**Gamma**—Gustavus  
Adolphus College  
Coach, Evan E.  
Anderson  
Kyle Montague  
Millard Ahlstrom  
Osler Peterson  
Carol Linner

M. A. Cornell, Jr.  
John Foard  
**Delta**—William Jewell  
College  
Mary Belle Burch  
Georgia B. Bowman  
Ramona Tripp  
James Davidson  
J. C. Cope

Manager, Mrs. Delmar  
Leeson  
Delmar Leeson  
Ralph Tripp  
Marie Wilkinson  
Marie Thomas

## NEBRASKA

**Delta**—Hamline University  
Coach, Chas. S. Templer  
Florence Capkey  
Mildred Schaffer  
Irene Holth

**Zeta**—Culver-Stockton  
College  
Coach, L. J. Graham  
Edward L. Young  
William Sener  
Maxine Lindley  
Betty Thomas

**Alpha**—Nebraska  
Wesleyan  
Coach, C. Horton Talley  
Paul Rieber  
Chester Hunt  
Ruth Butcher  
Beatrice Clark  
Helen Morgan

**Epsilon**—College of St.  
Thomas  
Coach, Owen McElmeel  
Robert Sheran  
Martin Cogley  
Frederick Eichinger

**Eta**—Central Missouri  
State Teachers,  
Warrensburg  
Coach, Ben Craig  
John Hollyman  
Marjorie Hanley  
Bruce Bowman  
Fina Chiodo

**Gamma**—Doane College  
Coach, J. H. Ennis  
Miller Ireland  
Donald Bourne  
Donald Nyrop  
Maxine Earhart  
Leona Hurlbut

## MISSISSIPPI

**Alpha**—Millsaps College  
Coach, Chas. F. Nesbitt  
Harris Collins  
Paul Ramsey  
Cathaleene Hales

**Theta**—Northeast Missouri  
State Teachers,  
Kirksville  
Coach, Clifton Cornwell  
John Rinehart  
Howard Stofel  
Twyla Freeman  
Crystal Longhead

**Delta**—Hastings College  
Coach, Leroy Laase  
Hale McCowan  
Marvin Find  
John Anderson  
Mildred Carter  
Ethel Mae Gunnison  
Lillian Filippi  
Thornton Shively, Jr.

## MISSOURI

**Alpha**—Westminster  
College  
President, F. L. McCluer  
Coach, J. B. Reeves  
Sherman Rock  
C. D. Todd  
William Brittain  
Paul Ralph  
Randle Elliott  
Charles Arbutnot

**Zeta**—Southeast Missouri  
State Teachers,  
Cape Girardeau  
Coach, Forrest H. Rose  
Clarence Edwards  
Charles Hunter  
Gus Margraf  
Mary Virginia Johnson  
Mrs. J. L. Duckworth

**Zeta**—Kearney State  
Teachers  
Coach, J. D. Hanson  
George Henigan  
Donald Smith  
Glen Borden  
Lehan Tunks

**Eta**—Park College  
Coach, John Barnes  
Mrs. John Barnes  
Carl Dallinger  
Pearl Baker  
Helen Schrader  
Elizabeth Wallace

**Kappa**—Northwest Mis-  
souri State Teachers,  
Maryville  
Coach, Orville C. Miller  
Edward Morgan  
Dwight Dalbey

## NORTH CAROLINA

**Alpha**—North Carolina  
State  
Coach, Edwin H. Paget  
Dwight Stokes  
R. L. Batts

## MONTANA

**Gamma**—Central College  
Coach, Bernard E.  
Meland  
W. McClintic Mitchell

**Alpha**—Intermountain  
Union College  
Coach, David Jones

**Delta**—Wake Forest  
College  
Coach, J. Rice  
Quisenberry

## *Hastings Delegation Outstanding*



From left to right. Back row: Thornton Shively, orator; John Anderson, extempore speaker; Hale McCowan, debater; Marvin Fink, debater; Leroy Laase, coach. Front row: Mildred Carter, debater; Ethel Mae Gunnison, debater and orator; Lillian Filipi, extempore speaker.

This group entered all six contests, qualified in all, and reached the finals or semi-finals in all but men's debate. Hastings won first in women's oratory and third in women's debate. This chapter scored more points than any other, according to the national ranking system now in force. Their success at Lexington should place them very close to the top in the ranking of the more than one hundred fifty chapters. The trophies are those which the chapter has won this year in state, interstate, and national competition.

Donald G. Myers  
Jack Muchison  
H. Clay Fox

**Gamma**—Asheville Normal  
and Teachers College  
Coach, A. B. Hoskins  
Edna Hague  
Hilda Brady

### **NORTH DAKOTA**

**Alpha**—Jamestown College  
Coach, Thos. W. Jackson  
Coach, Mrs. Thos. W.  
Jackson  
Wesley Haroldson  
Edwin Knight  
James McPherson

Melville Ravely  
Elbridge Phelps  
Lydia Strong  
Maxine Benson  
Ruth Cook

### **OHIO**

**Alpha**—Baldwin-Wallace  
College  
Coach, Mrs. M. C. Burns  
Coach, Dana Burns  
Byers Miller  
Richard Wolff

**Beta**—Hiedelberg College  
Robert Kranich  
Lowell Coulter  
Lowell Goerlich

Martha Stovicek  
Eleanor Wells  
May Ellen Sacksteder  
Gratton Downey  
John Dennis Weller  
Robert Zechiel  
Thomas Zoller

**Gamma**—Hiram College  
William Reed  
Parks Nichols  
August Pryatel

**Delta**—University of  
Akron  
Coach, Maxine Dye  
Karl Landefeld  
Frances Browne  
Ann Carians  
Harland Kerr



**Zeta**—Marietta College

B. E. Wigginton  
Emerson Mulford  
Jos. A. Sheehan  
Henry D. Hoyt  
Robert Nolan

**Eta**—Bowling Green State College

Coach, J. W. Carmichael  
Mrs. J. W. Carmichael  
John H. Moore  
Donald Cryer  
Marie Schmidt  
Hilda Doyle  
Virginia Ullom  
Marjorie Sams  
Yeonne Steffanni

**Theta**—University of Toledo

Coach, G. Harrison  
Orlans  
Arnold E. Sukrow  
Stanley Jeffery  
Daniel Gluck  
Dorothy Shore  
Lois Adams

**OKLAHOMA****Alpha**—Oklahoma A. & M.

Coach, Harry H.  
Anderson  
Ben Floyd  
Glenn Taylor

**Beta**—University of Tulsa

Coach, Harlan W.  
Hamilton  
Richard Ryan  
Frank Clark  
Mather Eakes, Jr.  
Frances Eastman  
Betty Henry

**Gamma**—Oklahoma

Baptist University  
Coach, C. W. Patton  
Mrs. C. W. Patton  
Porter Routh  
Rura Stephens  
Ruth Stegel  
Dorothy Terry

**Delta**—Northwest State

Teachers, Alva  
Coach, O. W. Rush  
Paul Cummings

Harden Ray  
Nora Geeslin  
Nellie Jillson

**Epsilon**—Oklahoma City University

J. Frank Martin

**Zeta**—Oklahoma College for Women

Claudia Faye Moore

**Eta**—East Central State

Teachers, Ada  
Coach, Chas. F. Spencer  
Leonard Grinstaff  
Paul Hughes  
Bertha Hunt

**Theta**—Southeastern State

Teachers, Durant  
Coach, T. A. Houston  
John A. Phillips  
George Sneed

**OREGON****Alpha**—Linfield College

Coach, R. D. Mahaffey  
Lloyd Lewis  
Robert Cummins  
Mary Frances Mulkey  
Lorene Morris  
Florence Macy

**PENNSYLVANIA****Alpha**—Grove City College

Coach, H. Burrowes  
John Fife  
Furman Walter  
George E. Bowles

**SOUTH DAKOTA****Alpha**—South Dakota

Wesleyan  
Coach, George V.  
Bohman  
Dwight Schwab  
Franklin Stark  
Jessie Van Metre  
Amber Van  
Evelyn Keith

**Gamma**—Yankton College

Coach, H. L. Curry  
Allison Dunham  
Cleon Reidinger  
Roger Nelson  
Dorothy Neubauer  
Marjorie Collins  
Gertrude S. Gantz

**Delta**—South Dakota State

Coach, George McCarty  
Wilford Herman  
Howard Dyste  
Robert Burris

**Epsilon**—Sioux Falls College

Coach, A. Gray  
John Shultz  
Thane Van Ausdell  
Robert Dunham  
Grace Prewitt  
Louella Anderson

**Zeta**—Northern State

Teachers, Aberdeen  
Coach, P. J. Harkness  
Mrs. P. J. Harkness  
Virgil Parker  
Steven Keane  
Rose Frothinger  
Elizabeth Douglas

**Eta**—Augustana College

Coach, Hugo A. Carlson  
Keith Case  
Siegfried Michelson  
Don Larson  
Francis Smith  
Anton Moe  
Burnis Rogness  
Bernice Severson  
Mary Strohn  
Ardus Kemper  
Marcella Staven

**Theta**—Eastern State

Teachers, Madison  
Coach, Karl E. Mundt  
Jay Roney  
George Hart  
Patricia Crowley  
Gladys Campbell

**TENNESSEE****Alpha**—Maryville College

Coach, V. M. Queener  
Dr. E. R. Hunter  
Earle Crawford  
Archibald Pieper

Newman Smith  
 Florence Hyde  
 Maria Wynn  
 Grace Proffitt  
 Louis Frank Krainock

**Gamma**—State Teachers,

Johnson City  
 Coach, R. B. Cox  
 John Oakes  
 Beverly Burbage  
 Edly Rogers  
 Evangeline Walker  
 Ruth Carrier  
 Irene Crawford  
 Elizabeth Grigsby

**TEXAS**

**Beta**—Trinity University

Coach, Alan Mote  
 William McCurdy  
 Winston Wilbanks  
 Billy Everhart

**Delta**—Howard Payne  
 College

Coach, O. E. Winebren-  
 ner  
 J. M. Dean  
 J. W. Bullion  
 C. E. Voyles  
 A. J. McChristy

**Epsilon**—Baylor College,  
 Delton

Coach, Edna Irwin  
 Elaine Miller  
 Virginia McNeilly

**National Council**

H. Dana Hopkins, Heidelberg College, Tiffin, Ohio.  
 George McCarty, State College, Brookings, South Dakota.  
 S. R. Toussaint, Monmouth College, Monmouth, Illinois.  
 W. V. O'Connell, 25 West Ninth Street, Hutchinson, Kansas.  
 W. Prewitt Ewing, William Jewell College, Liberty, Missouri.  
 G. W. Finley, State Teachers College, Greeley, Colorado.  
 Geo. R. R. Pflaum, State Teachers College, Emporia, Kansas.  
 Alfred Westfall, Agricultural College, Fort Collins, Colorado.  
 J. D. Coon, Sioux Falls, South Dakota.  
 Mrs. Eugene T. Welch, University of Tulsa, Tulsa, Oklahoma.  
 George Squibb, University of Wichita, Wichita, Kansas.

**Visitors**

Mrs. H. Dana Hopkins, Tiffin, Ohio.  
 Mrs. George McCarty, Brookings, South Dakota.  
 Mrs. G. W. Finley, Greeley, Colorado.  
 Mrs. S. R. Toussaint and Carol, Monmouth, Illinois.  
 Mr. and Mrs. T. M. Beaird, Norman, Oklahoma.  
 Dr. H. L. Ewbank, Madison, Wisconsin.  
 W. C. Dennis, Sugar Grove, Ohio.  
 President Turck, Centre College, Danville, Kentucky.

**North Texas State  
 Teachers, Denton**  
 Coach, Ross Compton  
 Kermit Hollingsworth  
 Lloyd Stowers  
 Floyd Dougherty

**Theta**—Simmons

University  
 Mark Eplen  
 Moxley Featherston  
 Kelley Barnett

**Iota**—Baylor University

J. W. Bruner  
 Richard Sanders  
 A. M. Prothro

**Kappa**—Sam Houston

State Teachers  
 Coach, Earl Huffor  
 W. Earl Martin  
 Martin McDonough

**VIRGINIA**

**Alpha**—State Teachers

College, Farmville  
 Dorothy Woolwine

**WASHINGTON**

**Alpha**—College of Puget  
 Sound

Coach, Charles T.  
 Battin  
 Arthur Linn

Charles Thomas  
 Franklin Houston  
 Ora Willmot  
 Jeanette Amidon

**WEST VIRGINIA**

**Alpha**—West Virginia

Wesleyan  
 Coach, G. L. Glauner  
 N. Cody  
 J. W. Jones  
 Ruth Hamrick  
 Virginia Bennett

**WISCONSIN**

**Alpha**—Ripon College

Coach, H. P. Boody  
 James Peterson  
 Clarence Huffman  
 Frank Grassy  
 Allen Michie

**Beta**—Carroll College

Vernon A. Utzinger  
 Cecil Nickell  
 Wallace Robertson  
 Agnes Grittenger  
 Dorothy Schmerke

**Beta**—State Teachers

College, Oshkosh  
 Coach, N. S. James  
 Walter Smith  
 Clark Byse



Mr. and Mrs. Ray Brown, Briston, Virginia.  
 Eugene T. Welch, Tulsa, Oklahoma.  
 Mrs. Della Crowder Miller, Decatur, Illinois.  
 Hubert Horne, Madison, Wisconsin.  
 Dr. and Mrs. Patrick, Lexington, Kentucky.  
 J. A. Shields, Seymour, Indiana.  
 Roy Shields, Seymour, Indiana.  
 Mrs. Herbert Moule, Wheaton, Illinois.  
 Mrs. Chas. F. Spencer, Ada, Oklahoma.  
 Mrs. James Start and Patricia, Fort Hays, Kansas.  
 Mrs. H. L. Curry and son, Yankton, South Dakota.

### PETITIONING COLLEGES

#### Augustana College (Ill.)

Coach, Martin Holcomb  
 Lloyd Schwiebert  
 Chester Johnson  
 Robert Maucker  
 Peter Denger

#### Illinois State Normal College, DeKalb

Coach, Gus W. Campbell  
 Lester B. Ball  
 Poe Street  
 Harold Street  
 Anna Weisman  
 Helen Loeb

#### Bethel College, Kansas

Coach, Dr. E. L.  
 Harshbarger  
 Ray Guy  
 Erland Waltner

#### University of Detroit

Coach, Archie T. Keane  
 Joseph Rashid  
 Bernard Meldrum

#### Concordia College—

Minnesota  
 Gabriel Hauge  
 Milford Tysseland  
 Carl Tiller  
 Leonard Eld  
 Paul A. Rasmussen

#### Missouri Valley College

Coach, C. B. Spotts  
 John Billings  
 Robert Sutton

#### Southwest Missouri State Teachers, Springfield

Coach, Virginia J.  
 Craig  
 Marion Bennett  
 Rex Ballinger

#### Lenoir Rhyne, North Carolina

Coach, Albert Keiser  
 Kent Sumners  
 George Chapman  
 Woodrow De Lawter

#### Dickinson State Teachers College, North Dakota

Coach, Mrs. Nell M.  
 Robinson  
 William Koenker  
 Glen Emch  
 Arthur Hedge  
 Renne Patterson

#### Stevens Point, Wisconsin

Coach, L. M. Burroughs  
 Michael Zylka  
 Celestine Nuesse  
 Donald Mills

#### State Normal College, Kent, Ohio

Coach, Beryl F. Englen  
 E. Turner Stump  
 William Smith  
 Fred Bundy  
 Edward Schneider  
 Lucille Arnold  
 Flora Jean Sprague  
 Josephine Cotman  
 Sarah Hunn

#### Central State Teachers, Edmond, Oklahoma

Coach, Roy W. Jones  
 Mrs. Dorothea Meagher  
 Doak Stowe  
 Don Wright  
 Fern Chowning  
 Julia Mae Cohoon

#### Abilene Christian College, Texas

Trine Starnes  
 Jack Pope

#### Stephen E. Austin Teachers, Texas

Don Langston  
 Rosser Welton  
 Terrell Ogg

#### San Marcos Teachers, Texas

John Brandstetter  
 York Willbern

#### Milligan College, Illinois

Coach, Hannah Graham  
 Belcher  
 Marvin Lowe  
 Phillip Shelley  
 Ruth Walker  
 Harriette Wells  
 Frances Burk  
 Garnet Williams

#### River Falls Wisconsin Teachers

Coach, Walker D.  
 Wyman  
 James Mason  
 Morris Buske  
 Leslie Libakken

#### Eau Claire Teachers, Wisconsin

Coach, C. D. Donaldson  
 Leonard Haas  
 Louis Berg  
 Robert Mills  
 Charles Arnold  
 Robert Halmstad

#### Shepherd College

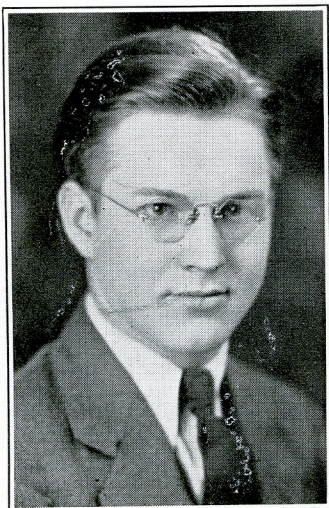
Robert Cox  
 Lee Temple

#### Whitewater Teachers, Wisconsin

Coach, Dr. E. H. Evans  
 George Richards  
 Clarence Schem  
 John Fiseher  
 Ralph Doseh

## P. K. D. MEN IN INTERSTATE ORATORICAL FINALS

James Pease, Franklin, Indiana Alpha, winner of the oratorical contest at Lexington, won second; and Carl Dallinger, Park, Missouri Beta, won third in the finals of the Old Line Interstate Oratorical contest at Northwestern University, Evanston, Illinois, April 28. William McClain, Negro orator of Wittenburg College, Ohio, won first with an oration entitled "Our Scroll of Destiny."



BURNIS ROGNESS

Four of the six orators who spoke in the finals represented Pi Kappa Delta institutions, and the fifth was from Wayne University, formerly the College of the City of Detroit, which until recently also had a Pi Kappa Delta chapter. The other finalists were: Irene Holth, Hamline, Minnesota Delta; Chester Hunt, Nebraska Wesleyan, Nebraska Alpha; and Walter E. Probst Jr., Wayne University.

Wesley Carty of Centre, Kentucky Beta; Burnis M. Rogness, Augustana, South Dakota Eta; Harold Livingston, Illinois Wesleyan, Illinois Alpha; and Melville Ravely, Jamestown College, North Dakota Alpha, were also among the ten state orators who spoke in the two qualifying contests. Thus all but two of the ten state orators were representing Pi Kappa Delta chapters.



## *Constitutional Amendments*

Numerous inquiries have been sent in asking about the proposed changes in the constitution and when they would go into effect. By action of the convention final action on constitutional amendments was to be taken by mail. Hence the old constitution will remain in effect until the new one is adopted. The committee on constitution reports that it will have its report in form to be sent out early in the fall.



## WATCH US GROW

Membership card, No. 12, 567, Wilson Ward Harvey, West Virginia Wesleyan.

Key No. 9, 104, Ruth Walker, Southwest State Teachers College, Oklahoma Delta.

◆◆◆◆◆

Among the high point winners at Lexington was Kansas State Teachers College of Pittsburg. Besides winning second in extempore, the Pittsburg forensic stars placed well in the other contests and brought to a conclusion the most successful season the institution has known.—*The Collegio*.

◆◆◆◆◆

Park, Missouri Beta, has sent five orators to the national Old Line Oratorical contests in the last eight years. They have never placed lower than third. One year a Park orator was first, twice her orators have been second, and twice third.—*The Park Stylus*.

◆◆◆◆◆

Karl E. Mundt, Eastern State Teachers of South Dakota, was reelected national president of National Forensic League, the high school honorary forensic society. He attended the national convention and tournaments of the League in Topeka, Kansas, the first week in May.

◆◆◆◆◆

Phi Rho Pi, national Junior College Forensic Fraternity, held its sixth national convention at Independence, Kansas, March 29-31. More than one hundred fifty delegates representing eighteen chapters were present. The contest winners were:

Men's debate, Duluth Junior College, Minnesota.

Women's debate, Hutchinson Junior College, Kansas.

Men's oratory, Independence Junior College, Kansas.

Women's oratory, Los Angeles Junior College, California.

Men's extempore, Duluth Junior College, Minnesota.

Women's extempore, Virginia Intermount College.

Prof. Roy C. Brown, Virginia Intermount College, was reelected national president.

◆◆◆◆◆

After winning the tournament at Lexington, Gustavus Adolphus was invited to meet the University of North Dakota at Grand Forks. The University of North Dakota is a Delta Sigma Rho school with an unusual record for the year. Gustavus was awarded the decision.

The Millsaps debaters had an interesting visit at Muscle Shoals and the Wilson dam on their way to the convention.



A number of the northern delegates paid a visit to Mark Twain's birthplace at Hannibal, Missouri, as they were traveling toward Lexington.



The Colby debaters stopped in Washington for a week on their way to the Lexington convention in order to investigate the powers of the president first hand.



Dwight Schwab, who represented Dakota Wesleyan in oratory at Lexington, was one of the two candidates nominated for student body president.—*The Phreno Cosmian*.



Charles A. Lindbergh is scheduled to speak at Yankton College, May 21, the sixth anniversary of his flight across the Atlantic. He rarely speaks in public.—*The Yankton Student*.



Claudia Faye Moore, Oklahoma College for Women, Oklahoma Epsilon, won the state Peace oratorical contest. East Central and Central State Teachers won second and third.—*The Trend*.



Christy Swain, Simpson, won first place in the Iowa extempore contest. Simpson won second in the tournament with Parsons third. First honors went to the State Teachers College.—*The Simpsonian*.



Wake Forest carried off the chief honors from the Tri-State debate tournament in Greensboro in March. Donald G. Myers won first in after-dinner speaking and Charles U. Harris third in extempore.—*Old Gold and Black*.



Five first place awards won in tournaments this year were presented to President Neff of Baylor University by his debate squads. The women have won two and the men three out of six tournaments in which Baylor has participated.—*The Daily Lariat*.