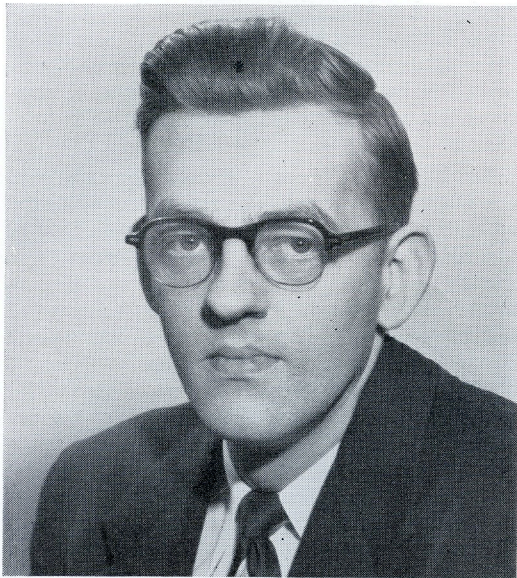


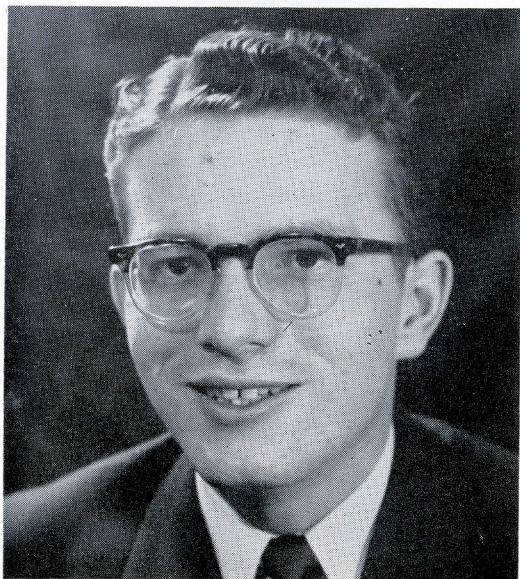
# PERSONALITIES

## *Continued*



ROBERT A. FORSYTHE

GUY VANDER JAGT



Forsythe retires from the active ranks of Pi Kappa Delta with 14 years of Pi Kappa Delta Activity to his credit. He attended the Knoxville Convention in 1940, The St. Paul Convention in 1942, and the Bowling Green Convention in 1947 as a student representing the Minnesota Beta Chapter at St. Olaf College. At the St. Paul Convention he received a Superior rating in extempore speaking and at the Bowling Green Convention he rated Superior in extempore and Excellent in Oratory. He holds the degree of Special Distinction in the orders of Debate, Oratory, and Instruction.

In 1947 after graduating from St. Olaf, Forsythe assumed a dual personality in academic endeavor. He enrolled at the University of Minnesota Law School and took over the post of Forensic Director at the College of St. Catherine in St. Paul. In 1948 he was successful in adding St. Catherine to the rolls of PKD as the Minnesota Eta Chapter. In April of 1949, St. Catherine won a sweepstakes trophy at the Peoria Convention and three months later he received his Bachelor of Laws Degree from the University of Minnesota.

In 1951 his St. Catherine squad received an Excellent sweepstakes rating at the Stillwater, Oklahoma Convention.

At the 1951 convention Forsythe served as Chairman of the Women's Debate Committee and was elected by the members of the Upper Mississippi Province to the position as Governor of the Province. He was chairman of the Constitution Committee at Kalamazoo.

Between his junior and senior years at St. Olaf Forsythe served four years in the Armed Forces during World War II. At the end of the war in Europe he attended the Law School at the University of Cambridge, Cambridge, England for six months.

During the past year he has served as Forensic Director at both St. Catherine and St. Thomas Colleges in St. Paul in addition to engaging in the active practice of law in Minneapolis, Minnesota.

Mr. Forsythe is married and has a son, age 6 and a daughter, age 4. He has been active in community affairs in Minneapolis and has devoted a good share of his time to Bethlehem Lutheran Church activities in Minneapolis. Golf and fishing are two hobbies he would like to find time for in the future.

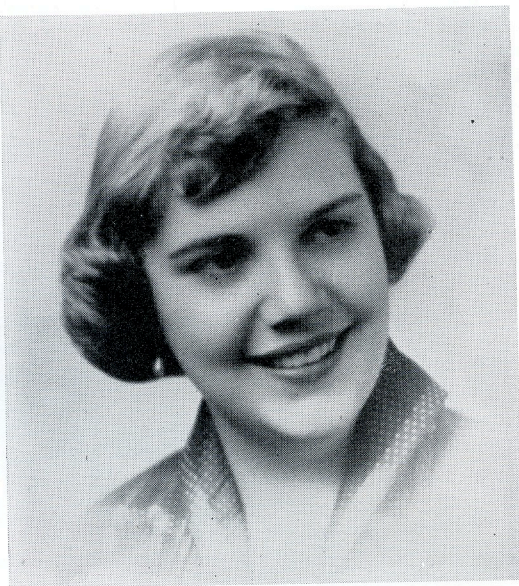


Mr. Forsythe assumed his new post in Washington, D.C. May 1, 1953. His new address is 3111 N. Rochester St., Arlington, Virginia. He has stated that PKD members will always be welcome at his new residence.

### GUY VANDER JAGT

Guy Vander Jagt, Hope College, '53, established an outstanding record as a forensic speaker during his four years as a member of the Michigan Gamma Chapter of Pi Kappa Delta.

As a freshman, he placed first in extemporaneous speaking at the Province of the Lakes tournament, and first in the Peace Extemporaneous Speaking Contest sponsored by the Michigan Intercollegiate Speech League (MISL). As a sophomore, he was the triple crown winner of the MISL when he placed first in the State Debate Tournament, the Old-line Extemporaneous Speaking Contest, and the Old-line Oratorical Contest; at the National PKD Convention at Stillwater, '51, he received a superior rating in Oratory and Extemporaneous speaking. During the 1951-52 session he again placed first in the MISL State Debate Tournament and first in the PKD Province of the Lakes tournament in extemporaneous speaking. During his senior year, he served as President of the Student Council and of the Michigan Lambda Chapter of PKD; delivered nearly 100 speeches to community groups reporting on his experiences as community ambassador from Holland, Michigan, to Germany under the plan known as Experiment in International Living; placed first in the MISL State Debate and Peace Oratorical Contest; rated superior in extemporaneous speaking, PKD National Convention; and first in the National finals of the Eleventh Annual Hearst Newspapers' Tournament of Orators held at Milwaukee, May 19. Guy reached the finals by placing first in each of the following contests: Senior Contest, held at Detroit, April 30, seven colleges from Michigan competing; Michigan Area Contest, May 7 at Detroit against winners of the Junior Division; May 15, defeated representatives from the Universities of Notre Dame and Pittsburgh in the Mid-Zone finals held at Chicago. In the national finals he won over the representative from the East (Amherst), the



JOAN REIDY

West (Southern California) and Marquette University, the local sponsoring newspaper representative.

### JOAN REIDY

Miss Joan Reidy, Wisconsin Zeta, '53, has been appointed graduate assistant in debate at the University of Alabama. During the 1952-1953 season, she established an outstanding record as an orator, debater, discussor, and extemporaneous speaker. In oratory, she won first in the Interstate Contest at Northwestern University, the Red River Valley tournament at Fargo, N.D., the first woman to win first in the University of Wisconsin Delta Sigma Rho tournament, superior rating in the national PKD Convention at Kalamazoo, and defeated 3 of the 4 other superior winners in the Interstate Contest held in Chicago. As an extemporaneous speaker, she received a rating of superior at the Kalamazoo PKD Convention, and first place in the Eau Claire tournament. She was also a member of the Eau Claire team that won first in the 1953 National Discussion Tournament. She placed first in women's debate at the Northwest Debate tournament and was the first woman to receive a wrist watch from the Elgin Company for being named one of the two top speakers in the West Point National Invitational Debate Tournament.



# Report of the 1953 National Questions Committee

LARRY NORTON, *Bradley University*

The results of the vote on the National Discussion and Debate Topics for 1953-54 are listed below as announced on August 15, 1953. Each first-place vote counted as four points, each second-place as three points; each third-place as two points, and each fourth-place as one point; thus the topic in each list receiving the highest total vote was chosen as the official question.

## DEBATE

Rank		Vote
1st	Resolved, That the United States should adopt a policy of free trade .....	871
2nd	Resolved, That the United States should promote a Pacific Treaty Organization .....	709
3rd	Resolved, That the Congress of the United States should enact a federal sales tax .....	611
4th	Resolved, That the Federal Government should support farm prices at 100% of parity .....	601

## DISCUSSION

1st	How can present procedures and practices of congressional investigation be improved? .....	852
2nd	What should be the policy of the Federal Government in support of education? .....	755
3rd	What can we do to improve world understanding? .....	577
4th	How can the purchasing power of the consumer be protected? .....	574

The basic procedures which govern the work of the national questions committee are as follows:

- (1) The SAA Committee on Intercollegiate Debate and Discussion Activities is composed of one member from each of the four cooperating forensic societies—Delta Sigma Rho, Phi Rho Pi, Pi Kappa Delta, and Tau Kappa Alpha—one member appointed by the Speech Association of America and one member appointed by president of the American Forensic Association. The chairmanship of the committee rotates among the four forensic societies and the SAA and AFA appointees.
- (2) Each committee member is responsible for polling the chapters of the organization which he represents. All suggestions for topics must be submitted to committee members not later than the May date set by the committee. (May 15th this year).
- (3) The committee members must meet during the months of May or June to decide on top-

ics and phrase the questions for discussion and the propositions for debate.

- (4) The debate propositions and discussion questions are submitted for preferential vote not later than August first to all chapters of the four forensic organizations and to a representative number of the nonaffiliated schools.
- (5) If circumstances require a change during the season, the committee may, by a two-thirds vote, alter the wording or move to a second choice proposition or question. Individual chapters or schools are encouraged to write their reactions to the propositions or questions to members of the committee as the forensic year progresses.
- (6) The four cooperating forensic societies agree to use the SAA questions as their official propositions for debate and discussion for the college year. This does not prevent individual schools or groups of schools from debating or discussing more than one question during the school year; but it does mean that none of the four societies would select a different question.
- (7) The topics must be announced by September 10th.

Working under these regulations, the following committee members met in St. Louis, Missouri, on June 19 and 20, 1953, and phrased the topics listed above: Glenn Jones, Pueblo Junior College, Phi Rho Pi; Larry Norton, Bradley University, Pi Kappa Delta; E. C. Buehler, Kansas University, representing Speech Association of America; Wayne Eubank, University of New Mexico, representing the American Forensic Association; and William Howell, Chairman, University of Minnesota, Delta Sigma Rho. The sixth member of the committee, T. Earle Johnson, University of Alabama, Tau Kappa Alpha, was unable to be present because of illness.

The regulations under which the committee operates prevent issuing any official interpretation by the committee, nor is any organization or individual so authorized. The right of interpretation rests with those who debate the question. The committee has attempted to phrase questions broad in scope in order to encourage thorough analysis and investigation and to give the advantage to those students doing the more extensive and intelligent work. The committee members hope that the topics chosen, by rather substantial margins, will provide a stimulating and profitable forensic experience for all participants.



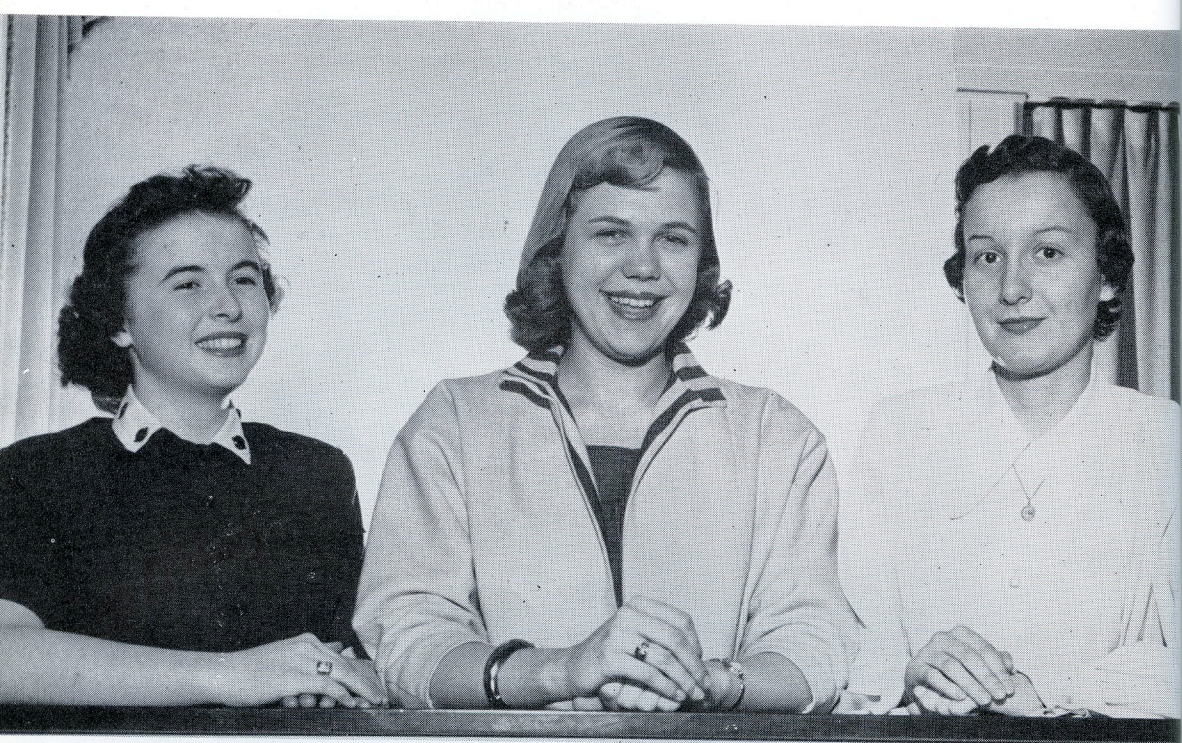


## *PKD's at the West Point Tournament*

Fourteen of the teams attending were from PKD schools. Miami University placed first (both speakers were members of PKD). Wisconsin State at Eau Claire, Augustana College, and Kansas State Teachers College at Emporia advanced to the quarter finals. Louisiana College, Wake Forest, St. Martin's, George Pepperdine, and Oklahoma Central were eliminated in the first final round. Robert Anderson, Augustana College was the highest rated debater in the tournament; Joan Reidy, Wisconsin State at Eau Claire was second. Both were awarded watches.

**FIRST ROW**, seated, Bob Cornwell, Central Oklahoma; James Slatton, Fletcher Brown, Baylor; Bill Henderson, Central Oklahoma; Paul Scherer, Phil Hefner, Midland; **SECOND ROW**, on chairs, Dr. T. F. Nelson, Ruth Michelsen, Anita Erickson (girls present but not debating), St. Olaf; Miss Grace Walsh, Joan Reidy, Wisconsin State at Eau Claire; Mrs. Sara Hawkinson, Midland College; Virgil Moorefield, Mr. Franklin Shirley, Joe Mauney, Wake Forest; **THIRD ROW**, standing, David Hardy, Lowell Erdahl, St. Olaf; David Matheny, Mr. Charles Masten, KSTC, Emporia; George Gerner, Wisconsin State at Eau Claire; Dick Donaldson, St. Martin's; Robert L. Anderson, Dr. Martin J. Holcomb, Augustana, Rock Island; Mr. Glenn R. Capp, Baylor; Stan Clark, Mr. Jack Carter, Louisiana College; John Judd, Mr. Carl Isaacson, Idaho State; **SHORT ROW**, starts by Anderson, David Swanson, Augustana, Rock Island; Art Snyder, Mr. Ronald Reid, Lyndell Cheeves, Pepperdine; **BACK ROW**, Robert Steele, Mr. Hugo David, David Hyman, Michigan State; Jerry Demo, KSTC, Emporia; Hugh Hafer, St. Martin's; Dan Weston, San Diego State; Mr. Ray Ford, Pepperdine; William Petersen, Idaho State; Dr. Wayne N. Thompson, PKD Member from Western Illinois coach at Univ. of Illinois at Chicago.



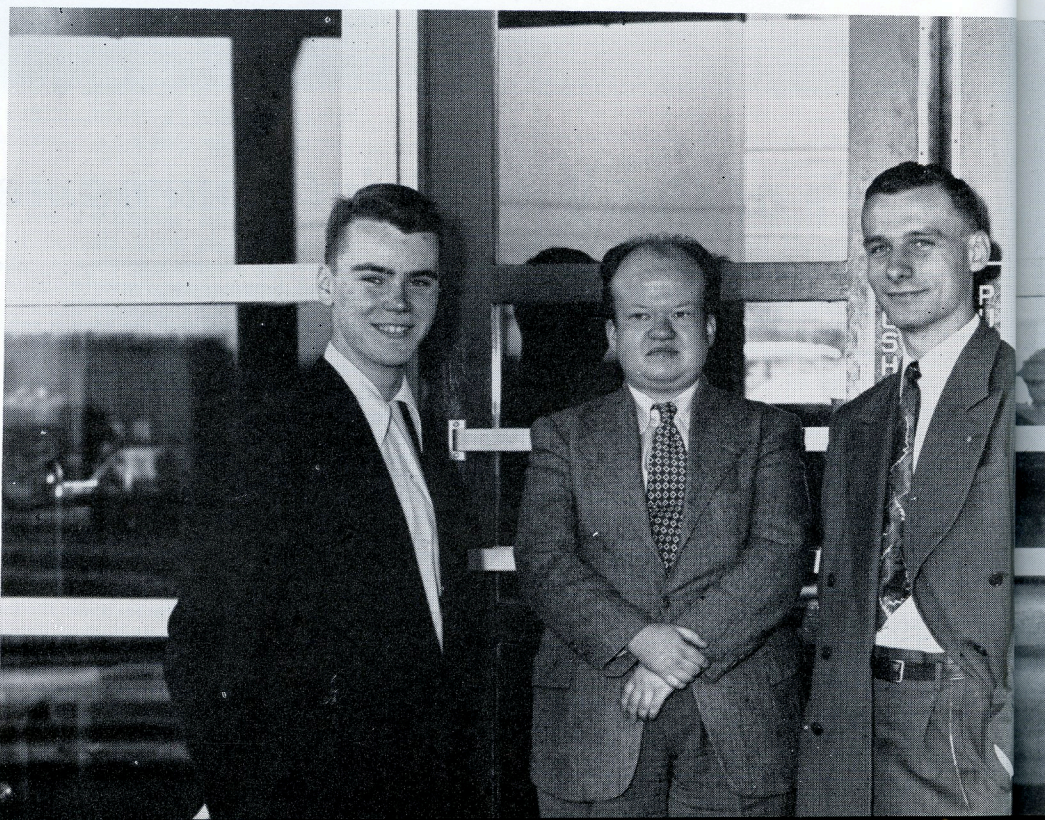


#### COLLEGE OF ST. CATHERINE

Left to right, Virginia Stav, Nancy Adams, Barbara Seng.

#### AUGUSTANA COLLEGE

Left to right, Robert L. Anderson, John B. Fryxell, David W. Swanson.







BAYLOR UNIVERSITY

Left to right, Bradford Carrigan, John Bagalay.

*Additional Sweepstakes Winners*  
*In National PKD Contest*





## *The President's Page*

Your new president feels decidedly humble and not a little frightened as he faces the responsibilities that come with the start of his term of office. Pi Kappa Delta is the largest speech fraternity in the world, and the task of serving it well for the next two years produces sobering thoughts. Fortunately, the chief factor in Pi Kappa Delta's greatness is the people who compose the order. Loyalty and the spirit of sacrifice have always distinguished its membership. And I feel very fortunate to have helping me during my administration one of the strongest groups of officers in many years. With their aid I hope that the fraternity can go forward in the future as it has in the past.

Those of you who attended the national convention last spring in Kalamazoo should have brought home with you two kinds of thoughts: first, a large fund of pleasant memories; and, second, a sense of the difficulties the organization faces in these troubled times. The speech of retiring Secretary-Treasurer Tous-saint was particularly provocative in the questions which it raised. Some of our problems the convention strove to settle by action taken at Kalamazoo; permanent committees are to be set up to study other problems and to report either to the national council or to the next convention. The chairmen of these committees have been named, and in the next issue of the *Forensic* I hope their full membership can be announced. Reports of the work of these groups will appear from time to time in our magazine.

There is, however, one problem upon which every member of the fraternity can begin work without waiting for any committee action; and that is our next convention, one which will present most of our chapters with a real challenge.

Ever since I joined Pi Kappa Delta as a student debater in 1930, there has been talk about a convention on the west coast. Now, in 1955, that dream is to become a reality. But to make it a successful reality there must be full chapter representation. Actually, if the country as a whole will make as good a record in going to California as the coast chapters have in attending conventions in the midwest, we will have a participation record of which no one need be ashamed. But for many of our chapters the expense will be unusual. Now, therefore, is the time to make plans to attend. In two years everyone should be able to scrape together enough nickels and dimes to pay the train fare to Redlands. Let's make our first California convention the biggest and the best in the history of Pi Kappa Delta!



## *From the Secretary's Desk*



In its forty years of existence Pi Kappa Delta has been served by seven men as secretary. John A. Shields, one of the original founders of Pi Kappa Delta, from Ottawa University became the first national secretary-treasurer of the organization. He served from 1913 to 1916. Roy Painter from Kansas State became acting secretary-treasurer in 1916. He took over the office of national treasurer in 1917 and served in that office until 1920. Then Dr. J. R. Macarthur of Kansas State College served as national secretary in 1917. Charles A. Marsh, Morning-side, served as national secretary from 1918 to 1922. Alfred Westfall, Colorado A&M College, became treasurer in 1920. He was elected to the office of secretary in 1922. He then held both of these offices until 1924. George Finley of Colorado State College became secretary-treasurer in 1924 and held that office until 1948. Syl Toussaint also of Colorado State College served from 1948 to 1953.

These men became members when the organization was young and made worthwhile contributions by helping to formulate the philosophies and policies of Pi Kappa Delta. We are also indebted to them for establishing the routine of the secretary's office which includes processing membership applications, key orders, and maintaining the records of the organization. Unless you have visited the secretary's office and seen the permanent records of its 28,000 members, the equipment and supplies that Pi Kappa Delta has accumulated, one might not realize the difficulties involved in making a major change in the location of the office.

The office of the secretary was closed during August while the records and equipment were being transferred from Greeley to Ada. Your new Secretary spent three days in Greeley for a period of orientation in the routine of the office. We are especially obligated to Syl Toussaint for the fine work that he did in organizing the work on an efficient basis during his five years of service. The office is now located at East Central State College, Ada, Oklahoma after the first major change in location in over thirty years. We hope to give you the same fine service to which you have become accustomed. Although the permanent membership files and part of the office equipment have not arrived at this time, we are now prepared to process membership applications, orders for keys, and provide all the services required of the secretary.

An organization that can bring 560 delegates and visitors from 123 chapters in 29 states to a national convention, who go through four strenuous days of contests, business meetings, and special events and can still generate as much enthusiasm as manifested in the final business meeting and the banquet demonstrates that it is still a vigorous organization with a great future in the field of forensic activities.

When Oklahoma Eta Chapter was installed in 1930 and Professor Bill O'Connell invited me to become a charter member three years after my college career was completed, I considered it a great honor. Little did I realize that I would ever have an opportunity to be active in Pi Kappa Delta. I appreciate the honors that I have received and will endeavor to serve you in this new position to the best of my ability and will continue the traditions of the office as established by those pioneers of Pi Kappa Delta who preceded me.



# ANNUAL REPORT OF THE TREASURER

July 1, 1952—July 31, 1953

## Receipts

Balance, July 1, 1952 .....	\$ 1,815.20
Fees—charter and membership .....	4,270.00
Keys .....	3,193.83
Certificates .....	11.50
The Forensic .....	9.00
Convention .....	3,943.59
Interest on Investments .....	120.00
Sale of Series F United States Treasury Bonds .....	1,393.50
Re-deposit of Check No. 310 (uncashed) .....	2.44
	<hr/>
	\$14,759.06

## Disbursements

Keys .....	\$ 3,108.47
The Forensic .....	2,550.11
National Council Meeting, August 1952 .....	608.04
Offices—secretarial assistance and supplies .....	1,951.82
National Convention .....	3,875.39
Printing and mimeographing .....	55.66
Postage, telegrams, telephone .....	135.17
Expenses of National Question Committee .....	50.67
Refunds on membership fees paid in error .....	45.00
Short checks .....	67.94
Bank charges .....	.75
Balance, July 31, 1953 .....	2,310.04
	<hr/>
	\$14,759.06

## Statement of Assets Owned

Checking Account .....	\$ 2,310.04
Colorado State Normal School Bonds .....	3,000.00
United States Savings Bonds, Series F .....	740.00
	<hr/>
	\$ 6,050.04

To the members of Pi Kappa Delta:

This is to certify that I have examined the books and records of Pi Kappa Delta for the period beginning July 1, 1952 and ending July 31, 1953, and have found them to be in order. The attached statement represents what I believe to be an accurate report of the financial status of the organization as of July 31, 1953.

Respectfully yours,

W. L. KNIES,  
Auditor

## CHAPTER REPORTS

Fees paid and keys ordered July 1, 1952, to July 31, 1953

	Fees	Keys	Totals
<b>Alabama</b>			
Alabama College .....	\$ 25.00	\$ 5.69	\$ 30.69
<b>Arizona</b>			
Arizona State, Tempe .....	20.00		20.00
<b>California</b>			
Redlands .....	60.00	60.60	120.60
California Institute of Technology .....	65.00		65.00
College of the Pacific .....	10.00	25.30	35.30
U C L A .....	75.00	21.06	96.06
Pepperdine .....	5.00	16.25	21.25
San Diego State .....	35.00	10.00	45.00
Pasadena .....	70.00	35.88	105.88



# CHAPTER REPORTS—Continued

Fees paid and keys ordered July 1, 1952, to July 31, 1953

	Fees	Keys	Totals
<b>Colorado</b>			
Colorado A and M .....	40.00	18.08	58.08
Colorado State College of Education .....	55.00	30.15	85.15
Western State .....	20.00		20.00
<b>General Chapter</b> .....		46.82	46.82
<b>Georgia</b>			
University of Georgia—Athens .....	5.00		5.00
University of Georgia—Atlanta .....	75.00	43.41	118.41
<b>Idaho</b>			
College of Idaho .....		15.34	15.34
Idaho State .....	25.00	40.43	65.43
<b>Illinois</b>			
Illinois Wesleyan .....	20.00	5.69	25.69
Eureka .....	20.00	19.80	39.80
Carthage .....	30.00		30.00
Bradley .....	20.00	52.06	72.06
Monmouth .....	10.00		10.00
Illinois State Normal University .....	30.00	6.60	36.60
North Central .....	20.00	26.40	46.40
Shurtleff .....	10.00	13.51	23.51
Wheaton .....	45.00	40.13	85.13
Western State .....	25.00	67.80	92.80
Augustana .....	50.00	29.67	79.67
Northern State Teachers .....	30.00	24.30	54.30
Illinois College .....	5.00		5.00
The Principia .....	5.00	47.74	52.74
Eastern State .....	30.00	77.04	107.04
James Millikin .....	20.00	12.29	32.29
Southern Illinois University .....	40.00	51.51	91.51
Greenville .....	35.00	51.83	86.83
<b>Iowa</b>			
Central College .....	25.00	35.42	60.42
Morningside .....	10.00	7.21	17.21
Simpson .....	10.00		10.00
Upper Iowa .....	35.00	34.75	69.75
Coe .....	5.00		5.00
Buena Vista .....	95.00	44.49	139.49
Drake .....	30.00		30.00
Luther .....	30.00	56.37	86.37
<b>Kansas</b>			
Ottawa .....	70.00	95.41	165.41
Washburn .....	50.00		50.00
Southwestern .....	35.00	21.84	56.84
Kansas State Teachers—Emporia .....	40.00	176.34	216.34
Kansas State Teachers—Pittsburg .....	10.00	18.69	28.69
College of Emporia .....		17.72	17.72
Baker .....	20.00	56.79	76.79
Sterling .....	5.00		5.00
Bethany .....	10.00	20.42	30.42
McPherson .....	25.00	25.10	50.10
<b>Kentucky</b>			
Centre .....	25.00	6.60	31.60
Kentucky Wesleyan .....		4.77	4.77
<b>Louisiana</b>			
Louisiana College .....	20.00		20.00
Louisiana Polytechnic .....	10.00	20.00	30.00
Southwestern Louisiana Institute .....	30.00		30.00



# CHAPTER REPORTS—Continued

Fees paid and keys ordered July 1, 1952, to July 31, 1953

	Fees	Keys	Totals
<b>Maine</b>			
University of Maine .....	35.00	29.57	64.57
<b>Michigan</b>			
Kalamazoo .....	30.00		30.00
Hope .....	35.00		35.00
Michigan State .....	90.00	11.00	101.00
Michigan State Normal .....		31.18	31.18
Detroit .....	10.00		10.00
Central Michigan College of Education .....	55.00	5.99	60.99
<b>Minnesota</b>			
Macalester .....	10.00		10.00
St. Olaf .....	50.00	66.24	116.24
Gustavus Adolphus .....	20.00		20.00
Hamline .....	15.00	8.13	23.13
St. Thomas .....	15.00		15.00
Concordia .....		10.26	10.26
St. Catherine .....	25.00	93.79	118.79
St. Mary's .....	55.00	25.40	80.40
<b>Mississippi</b>			
Millsaps .....	10.00	14.42	24.42
Mississippi State .....	20.00	6.60	26.60
State College for Women .....	20.00	10.16	30.16
Mississippi Southern .....	40.00		40.00
<b>Missouri</b>			
Westminster .....	35.00		35.00
Missouri Central .....	50.00	45.48	95.48
William Jewell .....	15.00	29.06	44.06
Culver-Stockton .....	20.00	22.74	42.74
Central Missouri State .....	5.00		5.00
Northeast Missouri Teachers .....	15.00		15.00
Missouri Valley .....	15.00	7.63	22.63
Tarkio .....	5.00	5.69	10.69
Drury .....	35.00		35.00
Rockhurst .....	40.00		40.00
St. Louis .....	10.00	19.20	29.20
<b>Montana</b>			
Montana State .....	45.00	45.41	90.41
<b>Nebraska</b>			
Nebraska Wesleyan .....	25.00		25.00
Doane .....	5.00		5.00
Hastings .....	10.00	93.12	103.12
Nebraska Teachers—Kearney .....	50.00	87.95	137.95
Omaha .....	55.00	18.73	73.73
Nebraska Teachers—Wayne .....	35.00	10.46	45.46
Midland .....	15.00		15.00
<b>North Carolina</b>			
Wake Forest .....	15.00	32.31	47.31
Lenoir Rhyne .....	35.00	13.51	48.51
Appalachian .....	40.00	61.34	101.34
<b>Ohio</b>			
Heidelberg .....	15.00	25.79	40.79
Hiram .....	10.00		10.00
Akron .....	35.00	6.97	41.97
Otterbein .....	25.00	5.69	30.69
Marietta .....	45.00		45.00
Bowling Green .....	45.00	18.90	63.90
Kent State .....	20.00	11.48	31.48