

The installing officer was Dr. Lester L. McCrery, of the Idaho Alpha chapter at the College of Idaho, assisted by other officers of that chapter, Ted Wills, Grace Forschler, Bill Holt, and Alice Matthews. This was particularly fitting since the first intercollegiate debate ever participated in by NNC was with the College of Idaho.

Officers of the new Delta Chapter were Harmon Schmelzenbach, president; Clayton Bonar, vice president; Irene Ammons, secretary; Richard Benner, treasurer; and faculty sponsors Miss Helen Wilson and Mallalieu A. Wilson. Mr. Wilson is one of the veteran forensic directors in the northwest, having begun his work of this type thirty-five years ago in Oklahoma, later working in California, and finally coming to his present position in 1939.

Coming into Pi Kappa Delta has already resulted in increased participation in forensics, with more than twenty new debaters on the squad, the majority of whom were able to travel to at least one of the fall tournaments. These attended were the Columbia Valley at Washington State, and the Western Speech Association at the University of Utah. Several trips are planned to several other tournaments, climaxing with sending a delegation to the National Convention at Bowling Green.

SOUTHERN STATE, SOUTH DAKOTA

The South Dakota Kappa Chapter of the Pi Kappa Delta of Southern State Teachers College under the direction of Prof. Milo Wepking received its charter at the National Convention at Brookings in 1957 and has been making good progress since that time.

One of the charter members, James McCroskey, won state high school championship with his debate teams last year, and several have had notable success after graduation.

There has been an increased interest in forensics due to Mr. Wepking's efforts as head of Southern's Speech Department. Each student is made aware of the fact that no matter what his major field, he will be required to express himself before both large and small groups at sometime during his life. A training in eloquence and poise can make these times worthwhile for both himself and his audiences.

Mr. Wepking has stressed this phase in any career and many students now have had opportunity to do platform speaking and debating.

Each year groups participate in speech meets at Wichita and Pittsburg, Kansas, the Universities of Nebraska and of South Dakota, Eau Clair, Wisconsin; Sioux Falls, South Dakota; and Denver, Colorado. From these meets the members bring home their share of superiors in discussion, extemporaneous speaking and oratory and win a good number of debates.

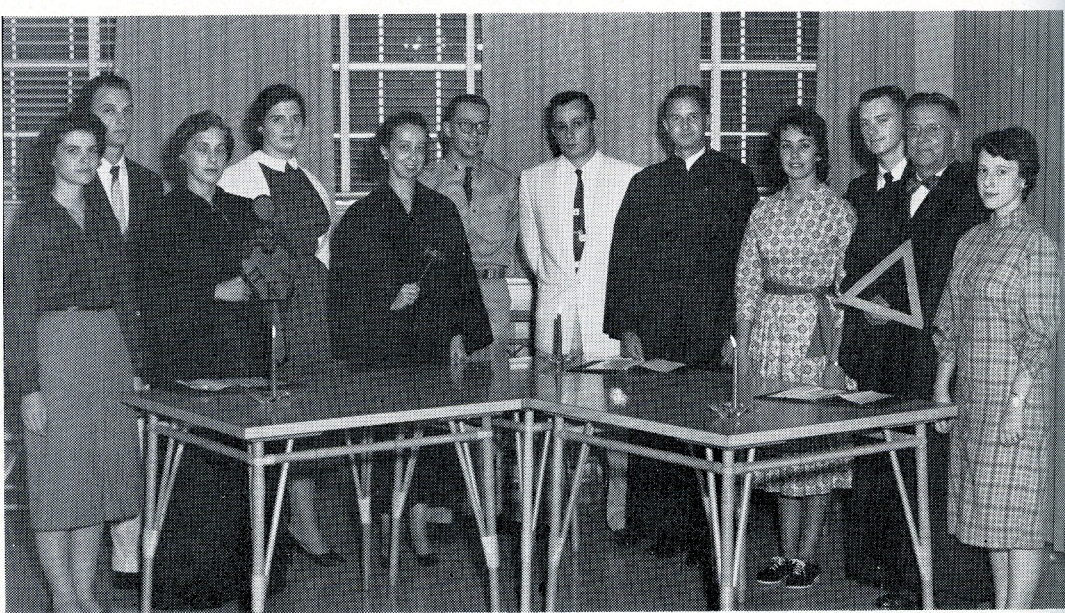
South Dakota Kappa Chapter sponsors a Second Place Winner High School Declam Contest each December with a large number of towns participating. The members also act as judging teams for high school speech events throughout the area.

Work is being done on a new school radio station that will increase interest in P.K.D. activities and make radio speaking more of a challenge at S.S.T.C.

Their initiation ceremony for new members and banquet will be held this spring and the year will prove to be very worthwhile here in the South Dakota Kappa Chapter.

STETSON UNIVERSITY

The Florida Beta Chapter of Pi Kappa Delta was reactivated in November, 1958, at Stetson University, with the following students being initiated as active members: Warren Carr, degree of Honor in the order of Debate; Grant Cole, degree of Fraternity in the order of Debate; Jackie Dossett, degree of Honor in the orders of Debate and Oratory; Jim Geiger, degree of Fraternity in the order of Debate and Oratory; Lisa Hammond, degree of Fraternity in the order of Debate; Wes Johnson, degree of Fraternity in the order of Debate; Mimi Shaw, degree of Fraternity in the orders of Debate and Oratory; Ann Severance, degree of Fraternity in the order of Debate; Art Stone, in absentia, degree of Proficiency in the order of Debate. Dr. Mary Louise Gehring, sponsor of the group and a special distinction member in oratory and debate of the Texas Iota Chapter of Baylor University; Dr. Irving Stover, the original sponsor of the Florida Beta Chapter; Mrs. Bob Lee



STETSON UNIVERSITY —

Pictured from left to right are Jackie Dossett, Jim Geiger, Mrs. Bob Mowery, Lisa Hammond, Dr. Mary Louise Gehring, Grant Cole, Warren Carr, Mr. Harvey Olliphant, Mimi Shaw, Wes Johnson, Dr. Irving Stover, and Ann Severance.

Mowery, the former Peggy Setzer, a special distinction member in the order of Debate of the North Carolina Delta Chapter at Lenoir-Rhyne College, and Mr. Harvey Olliphant, a charter member of the Florida Beta Chapter, assisted in the initiation.

The Chapter elected as its officers for the coming year: Warren Carr, a senior pre-law student, president; Grant Cole, a sophomore pre-law student, vice president; Jackie Dossett, a junior English major, secretary; Lisa Hammond, a junior speech and drama major, reporter; and Wes Johnson, a sophomore Spanish major, pledge trainer.

UNIVERSITY OF ILLINOIS, CHICAGO

Another promising year for the Illinois Psi Chapter began in September with the first annual Debate Mixer honoring new students and sponsored jointly by Pi Kappa Delta and the Alumni Debate Association. Other promotional activities were a booth at the Freshman Mixer, a booth in the front foyer, and speeches before classes.

Pi Kappa Delta members also organized a speaking project in behalf of the

sales campaign for the season series in "The Lively Arts."

The annual intramural tournament had a record number of twenty-nine participants with Nick Beeler, chapter president, taking top individual honors and sharing the team victory with Padraic Gallagher. Alumni debaters did some coaching and much of the judging.

In competition the team finished 4-4 in the tough Purdue Invitational, where they met all four of the other entrants who were at West Point last year. After that at Bradley, Northwestern, UIC, and Normal, the team never dropped under .500, improved steadily, and finished the first semester with an 8-2 standing in Division I at Illinois State Normal University.

Mike Hoffman with a 14-5 record, Marv Pilchen (10-4), Charles Goldstein (10-5) and Ed Campbell (10-5) are the leaders at the end of the semester. Hoffman received a rating of special distinction at the UIC Tournament by finishing tenth of 232, and Goldstein was among the select few to rank superior at Normal.

The Eleventh Annual UIC Freshman-Sophomore Tournament broke all of its



SOUTHERN ILLINOIS UNIVERSITY —

Southern Illinois University debaters who scored a unique double-championship at the annual **University of Arkansas Razorback Tournament** December 6 are shown with first place trophies. Men's team of **Gary Bengtson** (left) of **Rockford** and **Kent Brandon** of **Carbondale** captured top honors in Men's division while **Gailverne Kopp** of **Benton** (left) and **Sharon Loveless**, **Mattoon**, took the women's championship. Bengtson and Miss Kopp also were named top individual debaters in the field, which included 20 other universities.

past records with 236 participants from forty-eight colleges and universities in eight states. The University of Kentucky nosed out Augustana on points for the first-place trophy; Wheaton College, also undefeated in eight contests, was third.

Other forensic events sponsored by UIC were the Second Annual Debate Tournament for Parochial Schools and the Eighth Annual Debate Tournament for Public High Schools. The new Assistant Director of Forensics, Jack Arnold, directed the first of these, and Dr. Carl Pitt continued as manager of the second.

Wayne N. Thompson again is Chapter Sponsor and Director of Forensics.

CANHAM, ERWIN D., Editor
The Christian Science Monitor

My debate experience at Bates was helpful in my postgraduate study at Oxford. At all times the necessity of organizing ideas and presenting them vigorously has been pertinent to newspaper writing. Asking questions at press conferences or interviewing statesmen was aided by my public speaking experience.

—Bates College *Bulletin*

NORRIS, GEORGE W.
United States Senator

I was a member of the Crescent Literary Society and I shall never forget the



SOUTHWESTERN LOUISIANA STATE —

Southwestern Louisiana Institute debate team members (from left to right, front row) Kitty McBride, Crowley; Jackie DuBois, Lafayette; Gary DeBellevue, Crowley, and Dean O'Dea, Abbeville; (second row, left to right) Philip Yazbeck, Lafayette; Charles Sonnier, Abbeville; Isaac Burson, Basile, and Carl Corrado, Abbeville.

debating team we had. One of the best adjuncts to an education was a fine debating society. I learned a good deal in those old societies that was of inestimable value to me later in the practice of law. It has always been my belief that more attention ought to be paid in our schools, particularly in our colleges and universities, to debate. The principal object should be to prepare the young man or the young woman for participation in public gatherings of all kinds . . . To my mind, if I were able to found a college or university, I would stipulate that debate should be one of the things that never should be neglected. The impression made upon the mind in those debate sessions will live forever, even though we forget all about the questions debated and all about the arguments made, for gradually the human mind will grip and retain during life many valuable ideas of a very practical nature

which will help that person through life, no matter what his occupation may be.

—Crocker, *Argumentation and Debate*

QUIMBY, CLARENCE P.

Former Headmaster, Cushing Academy

One who has gone through the mill of grinding out debate gets well prepared for giving chapel talks and public addresses, or even standing before students in a classroom . . . The ability to speak extemporaneously and to organize one's thinking while standing before a group is certainly enhanced by debating experience. During forty years of coaching high school and preparatory debaters, I have noted with satisfaction that among the graduates of the schools with which I have been connected, those with debating experience dominate the successful group.

—Bates College *Bulletin*



From the Desk of the Editor

In the October 1958 issue we looked at several of the factors that make Pi Kappa Delta an outstanding forensic fraternity. We promised to list some of our weaknesses in a later editorial.

Chief among these, we feel, is the tendency to overlook the province organization. Since the same people who give our local chapters and the national organization their great vitality are also members and officers in the province structure, we cannot blame individuals for any shortcomings. However, while the national conventions and local chapters have active and progressive programs, the same cannot be said in general for province activities. Perhaps the concept should be enlarged so that each province will have a program. Would modeling the biennial province conventions after the national be a source of strength, or should experimental programs be tried as pilot efforts for the national?

Another weakness was discussed by Associate Editor Sillars in "Ridin' the Provinces", March 1958 issue. This is PKD's weakness in certain geographical areas of the nation. Sillars concluded:

"It is not the purpose here to suggest what to do. However, it is worthwhile for all of us to look at the facts. The Plains, land of our origin, and the Middle West are the bulk of our strength. The West

is rising fast. The Southeast has not moved in some time and seems to be biding time. The East has always been our weakest spot. Our present status has been a product of the original homes of our first chapters, the expansion of population to the West and the nature of the leadership in particular areas. In specific spots competing organizations, local prejudice and population density may cause a lack of interest in Pi Kappa Delta."

Provincial leadership is one of the answers to this situation.

A third weak spot is the lack of a strong alumni program. This has been a subject of frequent discussion by the National Council and in *The Forensic*. President Norton devoted his page to this topic in the March 1958 issue. He pointed out recent National Council efforts in this area, principally the column of alumni news by Associate Editor Shirley and the Distinguished Alumni Award, and suggested that efforts by local chapters to develop an alumni program would strengthen alumni relations.

There are other areas where we face challenges to improve Pi Kappa Delta. Perhaps you have one or more suggestions to offer. Be prepared to discuss them at Bowling Green or write them out and submit them to *The Forensic*.

CHAPTER DIRECTORY

KENTUCKY

Alpha—Georgetown College, Georgetown
Beta—Centre College, Danville
Gamma—Kentucky Wesleyan College,
Owensboro

LOUISIANA

Alpha—Louisiana College, Pineville
Beta—Centenary College, Shreveport
Delta—Louisiana Polytechnic Institute, Ruston
Gamma—Southwestern Louisiana, Lafayette
Epsilon—Northwestern State College,
Natchitoches
Zeta—Southeastern State College, Hammond

MAINE

Beta—University of Maine, Orono

MICHIGAN

Alpha—Kalamazoo College, Kalamazoo
Gamma—Hope College, Holland
Eta—University of Detroit, Detroit
Theta—Central Michigan College, Mount
Pleasant
Iota—Eastern Michigan College

MINNESOTA

Alpha—Macalester College, St. Paul
Beta—St. Olaf College, Northfield
Gamma—Gustavus Adolphus College, St. Peter
Delta—Hamline University, St. Paul
Epsilon—College of St. Thomas, St. Paul
Zeta—Concordia College, Moorhead
Eta—College of St. Catherine, St. Paul
Theta—St. Mary's College, Winona

MISSISSIPPI

Alpha—Millsaps College, Jackson
Beta—Mississippi State College, State College
Gamma—Mississippi State College for Women,
Columbus
Delta—Mississippi Southern College, Hattiesburg

MISSOURI

Alpha—Westminster College, Fulton
Gamma—Central College, Fayette
Delta—William Jewell College, Liberty
Zeta—Culver-Stockton College, Canton
Eta—Central Missouri State, Warrensburg
Theta—Northeast Missouri State Teachers Col-
lege, Kirksville
Iota—Southeastern State College, Cape
Girardeau
Lambda—Missouri Valley College, Marshall
Mu—Tarkio College, Tarkio
Nu—Drury College, Springfield
Xi—Rockhurst College, Kansas City

MONTANA

Beta—Montana State College, Bozeman
Gamma—Eastern Montana College of Education

NEBRASKA

Alpha—Nebraska Wesleyan University, Lincoln
Gamma—Doane College, Crete
Delta—Hastings College, Hastings
Zeta—Kearney State Teachers College, Kearney
Theta—University of Omaha, Omaha
Iota—Wayne State Teachers College, Wayne
Kappa—Midland College, Fremont

NORTH CAROLINA

Beta—Wake Forest College, Winston-Salem
Delta—Lenoir Rhyne College, Hickory
Epsilon—Appalachian State Teachers College,
Boone

OHIO

Alpha—Baldwin-Wallace College, Berea
Beta—Heidelberg College, Tiffin
Gamma—Hiram College, Hiram
Delta—University of Akron, Akron
Epsilon—Otterbein College, Westerville
Zeta—Marietta College, Marietta
Eta—Bowling Green State University, Bowling
Green
Iota—Kent State University, Kent

In response to a questionnaire the following public officials indicated that they:

1. Participated in school or college debating or both,
2. Found this experience *very valuable*.
3. Recommended debate training as *highly desirable* for students.

Richard M. Nixon, Vice President

Charles F. Brannan, former Secretary of Agriculture

Oscar L. Chapman, former Secretary of the Interior

Harold H. Burton, former Associate Justice, United States Supreme Court

Tom C. Clark, former Associate Justice, United States Supreme Court

William O. Douglas, Associate Justice, United States Supreme Court

Sherman Minton, Associate Justice, United States Supreme Court

John W. Bricker, former United States Senator from Ohio

Wallace F. Bennett, United States Senator from Ohio

Frances Case, United States Senator from South Dakota

Henry Dworshak, United States Senator from Idaho

Zales N. Eaton, former United States Senator from Montana

Allen J. Ellender, United States Senator from Louisiana

J. William Fullbright, United States Senator from Arkansas

Hubert H. Humphry, United States Senator from Minnesota

Edwin C. Johnson, United States Senator from Colorado

Ernest W. McFarland, former United States Senator from Arizona

James E. Murry, United States Senator from Montana

George Smathers, United States Senator from Florida

John Sparkman, United States Senator from Alabama

A. Willis Robertson, United States Senator from Virginia, did not participate in school or college debating, but he said, "My greatest handicap upon leaving college was lack of training in public speaking." He recommends debate training as "highly desirable" for students.

—from a survey conducted in 1952
by Austin J. Freeley

... the dialectical proceses for finding truth works best when the same audience hears all the sides of the disputation. This is manifestly impossible in the moving pictures: if a film advocates a thesis, the same audience cannot be shown another film designed to answer it. Radio and television broadcasts do permit some debate. But despite the effort of the companies to let opposing views be heard equally, and to organize programs on which there are opposing speakers, the technical conditions of broadcasting do not favor the genuine and productive debate. For the audience, tuning on and tuning off here and there, cannot be counted on to hear, even in summary form, the essential evidence and the main argument on all the significant sides of a question. Rarely, and on very few public issues, does the mass audience have the benefit of the process by which truth is sifted from error — the dialectic of debate in which there is immediate challenge, reply, cross-examination and rebuttal.

Yet when genuine debate is lacking, freedom of speech does not work as it is meant to work. It has lost the principle which regulates and justifies it — that is to say, dialectic conducted according to logic and the rules of evidence. If there is no effective debate, the unrestricted right to speak will unloose so many propagandists, procurers, and panderers upon the public that sooner or later in self-defense the people will turn to the censors to protect them . . .

For in the absence of debate, unrestricted utterance leads to the degradation of opinion. By a kind of Gresham's law the more rational is overcome by the less rational, and the opinions that will prevail will be those which are held most ardently by those with the most passionate will. For that reason the freedom to speak can never be maintained by merely objecting to interference with the liberty of the press, of printing, of broadcasting, of the screen. It can be maintained only by promoting debate.

—*The Public Philosophy*

CHAPTER DIRECTORY

OKLAHOMA

Alpha—Oklahoma A & M College, Stillwater
Beta—University of Tulsa, Tulsa
Gamma—Oklahoma Baptist University, Shawnee
Epsilon—Oklahoma City University, Oklahoma City
Eta—East Central State College, Ada
Theta—Southeastern State College, Durant
Iota—Central State College, Edmond
Kappa—Phillips University, Enid
Lambda—Northeastern State College, Tahlequah
Mu—Southwestern State College, Weatherford

OREGON

Alpha—Linfield College, McMinnville
Beta—Lewis and Clark College, Portland
Gamma—Portland State College, Portland

PENNSYLVANIA

Alpha—Grove City College, Grove City

SOUTH DAKOTA

Alpha—Dakota Wesleyan University, Mitchell
Beta—Huron College, Huron
Gamma—Yankton College, Yankton
Delta—South Dakota State College, Brookings
Epsilon—Sioux Falls College, Sioux Falls
Zeta—Northern State Teachers College, Aberdeen
Eta—Augustana College, Sioux Falls
Iota—Black Hills State Teachers College, Spearfish
Kappa—South Dakota State Teachers College, Springfield

TENNESSEE

Alpha—Maryville College, Maryville
Gamma—East Tennessee State College, Johnson City
Delta—Tennessee Polytechnic Institute, Cookeville
Epsilon—Carson-Newman College, Jefferson City
Zeta—Middle Tennessee State College, Murfreesboro
Eta—David Lipscomb College, Nashville

TEXAS

Beta—Trinity University, San Antonio
Delta—Howard-Payne College, Brownwood
Epsilon—Texas Christian University, Fort Worth
Zeta—Mary Hardin-Baylor College, Belton
Eta—North Texas State College, Denton
Theta—Hardin-Simmons University
Iota—Baylor University, Waco
Mu—Stephen F. Austin, Nacogdoches
Nu—Texas A & I, Kingsville
Xi—Abilene Christian, Abilene
Omicron—University of Houston, Houston
Pi—St. Mary's University, San Antonio

WASHINGTON

Alpha—College of Puget Sound, Tacoma
Beta—Seattle Pacific College, Seattle
Gamma—State College of Washington, Pullman
Delta—Whitworth College, Spokane
Epsilon—Pacific Lutheran, Parkland
Zeta—Western Washington College of Education, Bellingham
Eta—St. Martin's College, Olympia
Theta—Whitman College, Walla Walla

WEST VIRGINIA

Beta—Marshall College, Huntington
Gamma—Morris Harvey College, Charleston

WISCONSIN

Alpha—Ripon College, Ripon
Beta—Carroll College, Waukesha
Delta—River Falls State College, River Falls
Epsilon—Whitewater State College, Whitewater
Zeta—Eau Claire State College, Eau Claire
Eta—Wisconsin State College, Oshkosh



Coach Jim Trent and Debater Bob Dick.
Kansas State, Emporia (see Page 85)

MEIKLEJOHN, ALEXANDER

Former President, Amherst College

As I look back upon my own experience When I try to single out from among the long line of college students some one group which shall stand forth as intellectually the best — best in college work and best in promise of future intellectual achievement I cannot draw the line around my own favorite students of philosophy, nor the leaders in mathematics, nor those successful in biology; nor could I fairly award the palm to the Phi Beta Kappa men who have excelled in all their subjects.

It seems to me that stronger than any other group, tougher in intellectual fiber, keener in intellectual interests, better equipped to battle the coming problems are the college debaters — the students who, apart from their regular studies, band together for intellectual controversy with each other and with their friends in other colleges. —*The Liberal Arts College*

HARRIS, SEYMOUR E., author

Clearly, Keynes' main profit at Cambridge came from his extra-curricular activities rather than from his teachers . . . He became an outstanding figure at the Cambridge Union. His later success in winning students who were to help spread Keynesianism; his effectiveness in the years of persuasion 1919 on; the constant outpouring of ideas which remoulded Treasury official policy . . . his magnetic effect on the British cotton producers . . . his remarkable performance in the famous Bretton Woods debates; his presentation of the British case for a loan in 1945 . . . his many other brilliant debates — all of these owe much to his youthful training as a debater. "Like Dr. Johnson, he would talk for victory." —Seymour E. Harris

John Maynard Keynes

HENRY, DAVID D.

President, University of Illinois

. . . my speech and debate experience and training at Penn State was the most important single educational experience of my life . . .

The group developed fellowship and team camaraderie which had important by-products for personal growth. The visits to other schools, and travel experience, the living and working together — all under the high expectations of the "Coach" and his most gently administered but ever firm supervision — made for an individual development which has remained for me a high point in my educational experience.

The meaning of scholarship, the "feel" for the handling of ideas, the fellowship in professional service were for me but some of the outcomes of my debate experience.

—*Centennial History,*
The Pennsylvania State University

HUMPHREY, HUBERT H.

United States Senator, Minnesota

Democracy requires competition of ideas. There are three D's of Democracy — dissent, discussion, and debate. Dissent with respect for rights of others, discussion in a constructive and honorable manner, and debate based upon facts and honest exchange of ideas and information.

—Kent State University pamphlet

PRICE LIST

Revised September 1956

Prices include all taxes and handling charges.

Degree	Miniature (with pin)	Small (lavalier)	Large (fob)
DEBATE			
	(Pearl)		
Fraternity (Ruby)	\$ 5.00	\$ 5.60	\$ 6.70
Proficiency (Amethyst)	5.00	5.60	6.70
Honor (Emerald)	5.60	6.15	7.25
Special Distinction	8.20	10.35	13.75
(Diamond)			

ORATORY			
	(Ruby)		
Fraternity	\$ 5.85	\$ 6.40	\$ 7.55
Proficiency	5.85	6.40	7.55
Honor	6.40	7.00	8.10
Special Distinction	8.95	11.20	14.55

TWO ORDERS			
	(Turquoise)		
Fraternity	\$ 5.85	\$ 6.40	\$ 7.55
Proficiency	5.85	6.40	7.55
Honor	6.40	6.95	8.10
Special Distinction	8.95	11.20	14.55

THREE ORDERS			
	(Diamond)		
Fraternity	\$ 8.95	\$11.20	\$14.55
Proficiency	8.95	11.20	14.55
Honor	9.50	11.75	15.10
Special Distinction	12.03	15.98	21.53

INSTRUCTION			
	(Emerald)		
Fraternity	\$ 6.40	\$ 6.95	\$ 8.10
Proficiency	6.40	6.95	8.10
Honor	6.95	7.55	8.65
Special Distinction	9.50	11.75	15.10

HONORARY			
	(Sapphire)		
Fraternity	\$ 5.85	\$ 6.40	\$ 7.55
Proficiency	5.85	6.40	7.55
Honor	6.40	6.95	8.10
Special Distinction	8.95	11.20	14.55

SPECIAL CHARGES

For Pin attachment on large and small sizes add \$1.15.

For white gold (special distinction only) add \$1.15.

Guard chain with gold initial pin (chapter Greek letter) add \$1.70.

Charge for changing jewels in old keys, 50 cents.

Allowances: Gold in yellow gold keys exchanged for white gold large and small keys; \$1.50 Miniature; \$1.00.
Full value will be allowed on rubies, sapphires, and turquoises and emeralds exchanged for new jewels or white gold key.

Handling charge for changing jewels in old keys, 50 cents.

Address all key orders to the National Secretary:

D. J. Nabors
East Central College
Ada, Oklahoma

In This Issue

MARCH, 1959

<i>" . . . Shall Provide Qualified Judges</i>	<i>67</i>
<i>Joseph W. Marshall, Alumnus</i>	<i>68</i>
<i>Chapter Directory</i>	<i>69-92-93</i>
<i>Forensics at Bowling Green</i>	<i>70</i>
<i>Rotary International Honors Four Pi Kappa Delta Members</i>	<i>71</i>
<i>Student Representatives</i>	<i>72</i>
<i>Addition to Judging Committee</i>	<i>73</i>
<i>President's Letter</i>	<i>74</i>
<i>Secretary's Page</i>	<i>75</i>
<i>Picture Story — Our Host, Bowling Green</i>	<i>76</i>
<i>Chapter Notes</i>	<i>82</i>
<i>From The Editor's Desk</i>	<i>91</i>
<i>Price List</i>	<i>95</i>

ΠΚΔ