

THE FORENSIC

PEITHO KALE DIKAIÄ

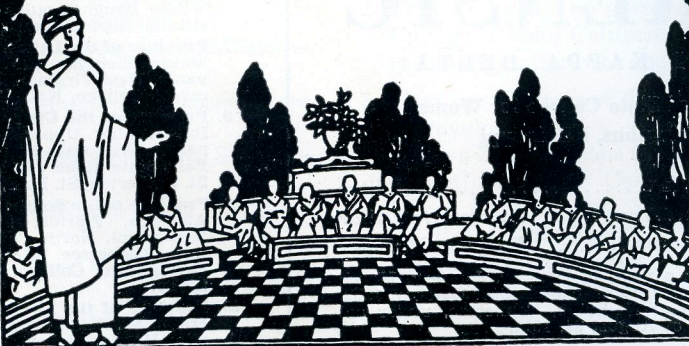
M A Y 1 9 5 3

Series 38

Number 4

IN THIS ISSUE

Proceedings of the Convention.....	99
In Memoriam—Dr. Alfred Westfall.....	101
National Council Student Members.....	102
National Directors of PKD.....	104
Decisions in Women's Activities.....	106
Decisions in Men's Activities.....	112
Superior Sweepstakes	120
Discussion	122
Convention Registration	125
The President's Page.....	130
From the Secretary's Desk.....	131
Convention Pictures	132
Ridin' the Provinces.....	142



DIRECTORY

OF

PI KAPPA DELTA

National President—Roy D. Mahaffey, Linfield College, McMinnville, Oregon.

National Vice-President — John Randolph, Westminster College, Fulton, Missouri.

National Secretary-Treasurer — S. R. Tous-saint, State College of Education, Greeley, Colorado.

National Council Members—D. J. Nabors, East Central College, Ada, Oklahoma; Theodore F. Nelson, St. Olaf College, Northfield, Minnesota; L. E. Norton, Bradley University, Peoria, Illinois.

Immediate Past-President—Sherod J. Collins, Northeast Missouri State Teachers College, Kirksville, Missouri.

Editor of the FORENSIC—Harvey Cromwell, Mississippi State College for Women, Columbus, Mississippi.

Associate Editor of the FORENSIC—Emil R. Pfister, Central Michigan College of Education, Mount Pleasant, Michigan.

THE PROVINCES AND GOVERNORS

1. **Province of the Plains**
Kansas, Nebraska, Colorado. Jess W. Gern, Western State College of Colorado, Gunnison, Colorado.
2. **Province of Missouri**
Missouri, Iowa—Central, Simpson, Parsons, Coe, Drake, William Penn. Harold C. Svanoe, Central College, Fayette, Missouri.
3. **Province of Illinois**
Illinois, Wisconsin—Ripon, Carroll, White-water State. Clayton Ford, The Principia, Elmhurst, Illinois.
4. **Province of the Pacific**
Arizona, California. Dean F. McSloy, Arizona State College, Tempe, Arizona.
5. **Province of the Sioux**
Iowa—Morningside, Westmar, North Dakota, South Dakota, Harold C. Larson, Huron College, Huron, South Dakota.
6. **Province of the Lower Mississippi**
Arkansas, Louisiana, Texas, Oklahoma. Wilma Baugh, Louisiana Polytechnic Institute, Ruston, Louisiana.
7. **Province of the Lakes**
Maine, Michigan, Indiana, Ohio, Pennsylvania, West Virginia. Ethel Kaump, Kalamazoo College, Kalamazoo, Michigan.
8. **Province of the Upper Mississippi**
Iowa—Luther, Upper Iowa, Dubuque—Minnesota, Wisconsin—Eau Claire State, River Falls State. Robert A. Forsythe, College of St. Catherine, St. Paul, Minnesota.
9. **Province of the Southeast**
Alabama, Florida, Georgia, Kentucky, Mississippi, North Carolina, South Carolina, Tennessee. Mrs. John H. Melzer, Georgetown College, Georgetown, Kentucky.
10. **Province of the Northwest**
Idaho, Montana, Oregon, Washington. Erwin H. Schwiebert, College of Idaho, Caldwell, Idaho.



FORENSIC

OF PI KAPPA DELTA

Mississippi State College for Women
Columbus, Mississippi

HARVEY CROMWELL *Editor*

EMIL R. PFISTER *Associate Editor*

SYLVESTER TOUSSAINT *Business Manager*

Issued four times a year, in October, January, March and May. Entered as second class matter October, 1952, at the post office at Nashville, Tennessee, under act of August 24, 1912.

All members of Pi Kappa Delta should be interested in the minutes of the business session held at the national convention. While the national officers are the official administrators, it is the action of the delegates at the national convention who elect the administrators and establish the policies that govern PKD. There have been some changes made in procedures and in the constitution that all PKD's should know. Don't fail to read this important section.

Proceedings of the Eighteenth National Convention of Pi Kappa Delta

Kalamazoo College, Kalamazoo, Michigan

April 5 - 9, 1953

First Business Session

THE FIRST business session of the convention was called to order by President Roy Mahaffey at 8:40 p.m. April 5. One hundred six chapters answered present to roll call. President Mahaffey introduced various convention officers and committee chairmen who made announcements regarding convention and tournament procedure and details.

After a brief and well-chosen introductory remarks the president called to the platform representatives of the following chapters installed since the 1951 convention and presented to them the official charters of Pi Kappa Delta:

Chapter No. 220. Illinois Chi, Greenville College.

Chapter No. 221. Washington Zeta, Western Washington College of Education.

Chapter No. 222. Louisiana Epsilon, Northwestern State College.

Chapter No. 223. Middle Tennessee State College.

Chapter No. 225. Washington Eta, St. Martin's College.

Chapter No. 226. California Theta, Pasadena College.

The meeting adjourned at 9:30 p.m.

Second Business Session

The second business session was called to order at 10:15 a.m. Tuesday, April 7.

Announcements were made concerning

items on the convention program and of meetings of important convention committees.

The president announced the appointment of Clayton D. Ford, The Principia, as Convention Parliamentarian.

The chair called for the report of the Committee on Nominations which distributed ballots for the election of President and Vice-president. Ballots were deposited on roll call which showed 112 chapters were present and voting.

The chair called for the report of the charter and Standards Committee. The report was presented by D. J. Nabors, chairman. The committee recommended:

1. That a charter be granted to Abilene Christian College, Abilene, Texas. On motion the recommendation was approved.
2. That a charter be granted to Chico State College, Chico, California. On motion the recommendation was approved.
3. That the charters of the following chapters be revoked:

Iowa Zeta, Parsons College; North Carolina Alpha, North Carolina State College; Texas Gamma, East Texas State College; South Carolina Epsilon, The Citadel; Ohio Theta, The University of Toledo; Pennsylvania Beta, St. Vincent College; Kansas Iota, College of Emporia. On motion the recommendation was approved.

4. That the following chapters be continued on suspension for a period of two years at

the request of the presidents of the colleges concerned.

West Virginia Alpha, West Virginia Wesleyan College; Texas Beta, Trinity University. It was moved that the recommendation be approved. It was moved to amend the motion by adding the requirements that the two chapters attend the next province and national meetings and acquire an annual travel budget for forensics of one thousand dollars. It was moved to table the amendment. The motion was declared out of order. The previous question was moved and carried.

By common consent the amendment was divided. The addition of the requirements of attendance at the next province and national meetings was passed. The portion of the amendment requiring a forensic budget of one thousand dollars was defeated. The main motion as amended was carried.

5. That the following chapters be suspended for a period of two years:

Kansas Eta, Kansas Wesleyan College; Iowa Nu, William Penn College; California Epsilon, University of California at Los Angeles; Arkansas Delta, Arkansas State College. It was moved that this recommendation be tabled until after the report of the Committee on Constitutional Revision. Carried.

President Mahaffey called on the secretary-treasurer who presented the following report:

Report of the Secretary-treasurer to the Eighteenth Biennial Convention of Pi Kappa Delta

FIRST OF ALL may I give you the statistics of the Eighteenth Convention. At the present time there are 560 delegates and visitors registered. These delegates represent 123 chapters in 29 states. At Peoria in 1949 we had 644 representatives of 130 chapters and at Stillwater 640 from 135 colleges.

Since this is my final report to you as your secretary-treasurer I would like to present a slightly different analysis than has been customary. In radio terms instead of giving you the news, I want to give a commentary on the news. Pi Kappa Delta faces some problems and perhaps from the vantage point of the secretarial office I can give some interpretations and comparisons which will have meaning for you and will help you and your National Council to solve these problems.

First of all, let me talk about finances and membership. I wish that I might have brought with me some charts which would have presented in graphic form some information which I think has significance. Our expenses, except for the national convention, are met entirely by membership fees. We need a minimum of 1,000 new members per year to operate on our present budget and maintain our reserves, which amount to \$4,000.00, about \$1,500.00 less than a year ago.

In 1923-24 (29 years ago) we initiated 900 members; in 25-26, 1,047; in 26-27, 960. In 1928-29, (24 years ago) with only 127 active chapters we initiated almost 900 members and took in fees amounting to \$4,346.00. In 1951-52 with 180 chapters we initiated 778 members and took in fees of \$3,735.00. Ten years ago in 1942 at the beginning of the war we had a fee income of \$3,760.00. We have been under 1,000 member additions since 1949.

The membership fee was raised from four to five dollars in 1928—25 years ago. It has remained constant since that date. Can you name anything else that has?

The two major annual items which are paid for from the fee income are the office expenses and the FORENSIC. A third item, printing charges, varies; some years it is heavy and others light. In 1928-29, the expenditures for secretarial allowances in the secretary-treasurer's office and for the president amounted to \$1,603.58; in 1941-42, \$1,600.00; last year, \$1,582.58. We had two heavy years preceding when we bought some much needed office furniture and equipment. You know what has happened to hourly wage rates on college campuses in the past twenty-five, ten, and even five years. The FORENSIC cost has gone from approximately \$1,500.00 in the earlier years mentioned to probably \$2,300.00 this year. Postage, printing rates, supplies of all kinds have felt the blow of inflation.

Pi Kappa Delta is caught in the squeeze between decreasing income and increasing expenses and some expenses which perhaps ought to have gone up. I would not like to see the fees raised but if they are not, each chapter will have to initiate more members. I know that the costs of going to college are high but I know, too, that on many of your campuses the students drive cars, spend more on one date than pre-war students did in a month, and join other organizations which cost considerable money. It becomes a question of what we want to do. I don't know the

solution but I do know that we face a problem and one which must be met.

Related to Pi Kappa Delta finances, of course, is program. Ten chapters within 400 miles of Kalamazoo are not represented here. But there are 5 out of 7 from Washington, 6 of 7 from California, 2 of 2 from Oregon, 3 of 3 from Colorado, 2 of 2 from Idaho, 4 of 5 from Louisiana and our sole chapters in Arizona and Maine. Several sponsors wrote to say that they couldn't get an additional appropriation from the college. Some chapters are represented by only a faculty member and some make that their customary practice. Did you know that about one-fourth of you are here because you sold athletic programs, ran concession stands, sponsored variety shows, contributed the proceeds of a year of baby-sitting, sold blood for transfusions, dug down into your own pockets, cooked your meals en route or are driving cars through from Michigan factories to dealers at home? The convention is, of course, only one aspect of a chapter program. The Coordinator of Provinces, Ted Nelson of St. Olaf, and the Charter Committee under D. J. Nabors are gathering considerable data about chapter activities and campus forensic programs. In relations with the national office the sponsor is the key person. This year we had 43 known changes of chapter sponsors over last year—about 25 per cent. There are undoubtedly some I don't even know about. I learned of seven in getting convention entries. The problem of getting an accurate mailing list is a great one. A live sponsor will spark a live chapter and a live chapter will have a good program. It is almost axiomatic.

In the third place, and closely related to both of the above, is the problem of the direction in which forensics and Pi Kappa Delta are to go. It is my conviction, stated two years ago and repeated now, that we are living in a changing educational world and forensics as part of speech education is also part of that changing pattern. Some policies, philosophies, and practices in Pi Kappa Delta have not changed in a quarter of a century. Maybe they should not be changed but certainly they should be re-thought. Should we continue to have the type of convention we have been having since 1926? Is tournament debating on the wane? Should we re-state our purposes and broaden our membership base? Pi Kappa Delta should exhibit educational statesmanship in forensics, know its aims and goals and not drift with the current or be dragged under by the tide.



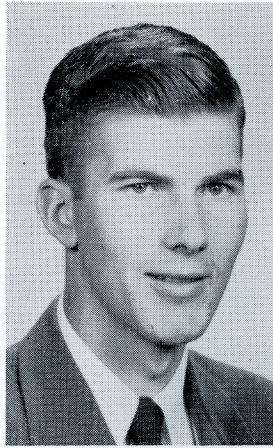
IN MEMORIAM

Dr. Alfred Westfall, Professor and Head of the Department of English and Modern Languages, Colorado A & M College, died suddenly Saturday evening, April 11, following his return home from attending the National Convention of Pi Kappa Delta at Kalamazoo College.

From the time he received membership card No. 161 as a charter member of Colorado Alpha, March 10, 1915, Dr. Westfall was an enthusiastic supporter and leader in Pi Kappa Delta. He probably held more national offices in Pi Kappa Delta for a longer period of time than any other man in the history of the fraternity. He was National Historian from 1918-20, 1928-30; National Treasurer, 1920-22; National Secretary, 1922-24; National President, 1924-28; and Editor of the FORENSIC, 1926-28, 1932-47. At the last national convention he served as a member of the Committee on Resolutions. It has been through the unselfish efforts of such men as Dr. Westfall—men who dreamed dreams and were willing to pay the cost to make their dreams a reality—that Pi Kappa Delta has grown from the infant it was in 1915 to its present influence for stimulating a closer spirit of fellowship, brotherly cooperation, and interest in the art of persuasion beautiful and just.

Pi Kappa Delta bows its head in reverence to the memory of Dr. Westfall—humanitarian, teacher, scholar, counselor, friend—who gave so much to all of us. Dr. Westfall added to the sum of human happiness; and were everyone to whom he did some loving service bring a blossom to his grave, he would sleep beneath a wilderness of flowers.

Professor Ruth J. Wattles, Colorado A & M College, Fort Collins, Colorado, is chairman of a committee who is establishing a fund to be known as the Alfred R. Westfall Scholarship Memorial Fund. She invites your gift of appreciation to help make this memorial an actuality.



National Council Student Members

June Florence Stromberg of Kalamazoo College and Lyle Koerper of South Dakota State served as student members of the National Council during the National Convention at Kalamazoo College. In addition to serving as student member of the National Council, June also served as student chairman of the convention.

June was born in Detroit, Michigan, is nearly twenty-two years old, of Swedish decent and has visited in Sweden on two occasions. She completed grammar school in Detroit, high school at Traverse City, Michigan, and expects to graduate from Kalamazoo College this spring with a major in speech and minors in psychology and economics. She was Miss Traverse City of 1949. At K-College, June is a member of Kappa Pi Literary Society, Forensics, House Council, and President of Mary Trowbridge House. Her plans for a career in business have been changed to one in homemaking.

June's comments on serving as a member of the National Council were: "I consider it an honor and a challenge to be privileged to serve on the National Council this year. I had a very wonderful time and it was a tremendous educational experience. The members of the Council are a fine group of hard working men who never are too busy for a friendly greeting or a laugh."

Lyle, age twenty-two, lives in Brookings, South Dakota, where he completed his grammar and high school training and is now a graduating senior at South Dakota State. He is majoring in journalism and minoring in speech.

His college career has been active. He is a three year member of Pi Kappa Delta, and has had four years of intercollegiate forensic activity in debate, extempore, discussion, and after dinner speaking. He is the present president of the South Dakota Delta chapter of PKD and is a member of Alpha Psi Omega and Sigma Delta Chi, national dramatics and journalism fraternities. Lyle is also active in church work and is past-president of the Roger William Club, the college church group.

For three years, he has been a staff member of the student radio station KAGN, acting as public relations director and sports announcer. Future plans call for continued work in journalism and the daily newspaper field.

Our problems are accentuated by the fact that our strength has always been in the small private college and the state colleges, primarily of education. We have not been interested in size and prestige but in accomplishment. But one great segment of our memberships is having a difficult time of it in view of the decreases in income and the tremendous increases in costs. Some of our Alpha and Beta chapter colleges, once the homes of our strong chapters, are facing a fight for survival. Since about fifty percent of our chapters are located in privately supported colleges, we cannot ignore their plight and its effect on Pi Kappa Delta. We need to assist those chapters in every way that we can to maintain a program and in days when every dollar on those campuses is being weighed we need to sponsor a program which will merit some of those dollars.

I have been serious but I am not pessimistic. This is still the most vital, vibrant organization of its kind and with good local, province, and national leadership it will continue to be.

IT HAS BEEN my good fortune to serve Pi Kappa Delta in a number of offices since 1930. The Council had asked me to continue as your secretary-treasurer for another four years as permitted by the constitution. I appreciate their confidence and yours but it is with reluctance and regret that I must decline the nomination. With the beginning of the next fall quarter both of our daughters will be away from home. It is a tremendous job even for an entire family project and an impossible one without their help. In addition to campus teaching and committee assignments we lead busy lives in the community and in our church. We need a little time to loaf, to read, to enjoy our Colorado mountains. It has been a grand experience. You have been more than tolerant of our errors, our delays, and our weaknesses. At this point the infrequent irritations tend to disappear and we shall remember especially the warm personal notes which you included in or attached to your letters and your friendly greeting at the convention registration desk. We covet for the next secretary-treasurer the same understanding cooperation you have given us. We shall do everything we can to make the transition to another headquarters an efficient and smooth operation.

Respectfully submitted,

S. R. TOUSSAINT,
Secretary-Treasurer.

It was moved that the report be accepted. Carried.

Edward S. Betz, chairman of the Committee on Nominations, reported the results of the balloting as follows: President: John Randolph; Vice-President: D. J. Nabors.

The meeting adjourned at 11:57 a.m.

Third Business Session

President Mahaffey called the meeting to order at 2:43 p.m. Thursday, April 9.

Theodore F. Nelson reported as Coordinator of Province Governors on measures being taken to increase the significance and scope of the province organization and the office of governor. He indicated that the governors would have direct liaison with the national council through the coordinator, that FORENSIC articles had pointed up the province organizations and leadership and that a governors' dinner at the convention had offered opportunity to discuss new avenues of effectiveness. He reported that among other things the governors would write to presidents of all colleges in their province which had been represented at the convention, would encourage new chapters within the province area, would attempt to assist weak chapters in any way possible, and would encourage all chapters in the continuation of normal forensic activities and the enlargement of their programs. The governors recommended that the term of the province governor be increased to four years rather than the traditional two years. On motion the report was accepted.

President Mahaffey explained the thinking of the Council relative to the selection of a secretary-treasurer and presented D. J. Nabors of East Central State College, Ada, Oklahoma as the nominee for that office. The nomination was approved and carried.

Mr. Nabors presented his resignation as vice-president. It was moved that the resignation be accepted. Carried.

The Committee on Nominations presented the names of T. F. Nelson of St. Olaf and Laurence Norton of Bradley as candidates for vice-president. By common consent the convention agreed to cast the ballots on their honor, one vote per chapter, dispensing with roll call.

Announcements were made by John Randolph, chairman, committee on contests; June Stromberg, student member of the council; S. R. Toussaint, secretary-treasurer; Don Nelson, chairman, committee on discussion; Harvey Cromwell, Editor of the FORENSIC.

Edward S. Betz, chairman, committee on Nominations announced that T. F. Nelson had been elected vice-president. He then presented the nominees for positions on the National Council, as follows: Harold Ahrendts, Nebraska State Teachers College, Kearney; James Holm, Kent State University, Kent, Ohio; Ethel Kaump, Kalamazoo College, Kalamazoo, Michigan; Roy Murphy, Southwestern Louisiana Institute, Lafayette; Laurence Norton, Bradley University, Peoria, Illinois; Franklin Shirley, Wake Forest College, Wake Forest, N.C.

The chair called for nominations from the floor. Emmett Long of Pepperdine College, Los Angeles, California was nominated.

Ballots were deposited on roll call which showed 125 chapters present and voting.

Glenn Capp reported as chairman of the Committee on Convention Invitations as follows:

Report of the Committee on Convention Invitations

The committee on Convention Invitations has received three definite invitations and one tentative invitation for the 1955 National Pi Kappa Delta Convention.

The definite invitations come from the following schools:

1. Redlands University, Redlands, Calif.
2. Washington State University, Pullman, Wash.
3. Oklahoma A & M College, Stillwater, Okla.

The tentative invitation was extended by Lewis and Clark College, Portland, Oregon.

In making a tentative evaluation of the invitations, the requirements drawn up by the invitations committee at the 1951 national convention were used.

1. Redlands University, located 60 miles East of Los Angeles, offered its facilities through Dr. Eugene R. Moulton, forensic director, and by telegram from the President of the University, George H. Armacost. It has the unanimous approval of the local province. This committee is of the opinion that Redlands University offers excellent facilities for the convention and tournament, and for housing and meals.
2. The Washington State invitation was extended through Professor W. H. Veatch and through letters from President C. Clement French and Associated Students director Frank Noffke, and with the endorsement of the local province. This committee feels that Washington State

(Continued on page 136)

National Directors of Pi Kappa Delta

The editor of the *FORENSIC* has asked me to prepare a brief statement of policy and a biographical sketch, and I am glad to comply. Actually, of course, any statement of policy from me at this time would be a little presumptuous, since I do not take office until July 1, 1953. However, all of us who listened to the speech of retiring Secretary-Treasurer Toussaint at our convention in Kalamazoo realize that there are many problems facing Pi Kappa Delta. It is my hope that we will approach these problems with an open mind. We must keep the best of the practices which in the past have made us strong; at the same time, we must change with the times. I know that I can count on the assistance of all of you in the thorough study of these matters.

Since a biographical sketch is likely to be of primary interest to the man being written about, I shall make this as brief as possible. I was born in the "penny royal," or poor man's red clay section of western Kentucky, but I have spent most of my life in Missouri. As an undergraduate I debated for Central College, Missouri Gamma, in Fayette. Thanks largely to my colleague, Earl Johnson, who was our strong second speaker, I was on the debate team which took third place at the Tulsa national tournament in 1932. I had the good fortune to have as my coach at Central Ira G. Morrison, now coach at Phillips University. After graduate work at Vanderbilt University, I returned to Central College and taught there until the war. After a hitch in the Navy as a communications officer, I was employed by Westminster College and have been there since 1946 as head of the department of English and director of forensics. One more vital statistic, and I am through: I married a member of the Central College women's debate team, and between us we have produced three debating children, who seem to be able to out-argue both of us on almost anything. They ought to be wonders by the time they get to college.

JOHN RANDOLPH



JOHN RANDOLPH
President
Westminster College

THEODORE F. NELSON
Vice-President
St. Olaf College





LARRY E. NORTON
Council Member
Bradley University

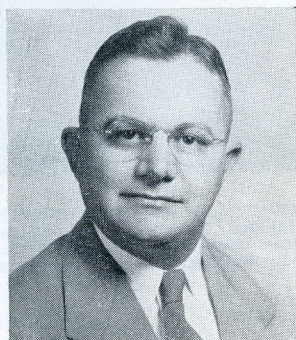


ETHEL KAUMP
Council Member
Kalamazoo College



ROY D. MURPHY
Council Member
Southwestern Louisiana
Institute

Every two years brings new people to the Directory of Pi Kappa Delta. While they may be new as officers of the National Council, they are personalities well known to Pi Kappa Delta members. D. J. Nabors, Secretary-Treasurer, has been a member of PKD since 1930, Governor of the Provinces of Oklahoma and the Lower Mississippi, and member of the National Council; Dr. Ethel Kaump is the present Governor of the Province of the Lakes and was hostess of the 1953 national convention; Roy D. Murphy has served as Associate Editor of the *FORENSIC* and Governor of the Province of the Lower Mississippi.

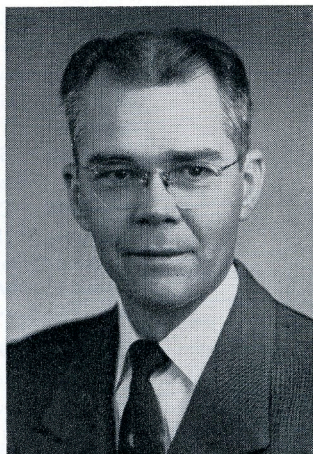


EMIL R. PFISTER
Assoc. Ed. of the *Forensic*
Central Michigan College of
Education

D. J. NABORS
Secretary-Treasurer
Oklahoma East Central
State College

HARVEY CROMWELL
Editor of the *Forensic*
Mississippi State College
for Women

ROY D. MAHAFFEY
Immediate Past-President
Linfield College





SUPERIORS WOMEN'S DEBATE: seated, left to right, Aileen Lawson, Nebraska Wesleyan; Anne Torrains and Pat Hankins, Northwestern Louisiana State; Delores Phife and Mary Sparks, North Texas State. Standing, left to right, Joan Roesler and Beverly Eisele, Bradley University; Thelma Brekke, Nebraska Wesleyan; Joyce Miller and Barbara McJilton, Emporia Teachers; Virginia Stav, Barbara Seng, Nancy Adams, and Marlene Yost, College of St. Catherine.

Women's Debate

ROUND ONE

AFFIRMATIVE • NEGATIVE

Augustana, Ill.*** • Louisiana College**
 Dakota Wesleyan** • Western Washington
 Akron • East Central Oklahoma
 Illinois Normal** • Arizona State**
 South Dakota State • Appalachian**
 Luther*** • McPherson
 Miss. St. Col. for Women • George Pepperdine
 Wheaton** • San Diego State**
 St. Olaf** • Omaha
 Heidelberg • (Bye)
 Wisconsin Eau Claire*** • Idaho State
 Huron • Pittsburg Teachers
 Bradley**** • Southwestern Kansas**
 Maryville • Linfield
 Michigan State • Colorado State

Northern Illinois** • Northwestern Louisiana****
 Kent State • (Bye)
 Gustavus Adolphus • Hastings***
 Tennessee Tech • Seattle Pacific
 The Principia (Default) • College of Idaho** (Bye)
 Wisconsin River Falls • Washington State**
 Augustana, South Dakota • Hardin-Simmons
 Southern Illinois** • Nebraska Wesleyan****
 Georgetown*** • North Texas****
 Concordia • Southwest La. Institute***
 Yankton • Wake Forest***
 Greenville • Colorado A & M
 Kalamazoo • Iowa Central
 Alabama College • Louisiana Tech
 Whitewater, Wisconsin • College of Puget Sound
 St. Catherine**** • Emporia Teachers****
 Central Michigan • Maine**

Winners indicated in bold face.

**—Team rating of Good

***—Team rating of Excellent

****—Team rating of Superior