

Coming from Grandview, South Dakota, where he was born (in a sod house), to Detroit in 1926, he has resided in Wayne County ever since. Graduating from Visitation High School, he attended University of Detroit where he received a Bachelor of Philosophy degree in 1936 and a Bachelor of Law degree in 1938 from the same institution. While a student at the University of Detroit, Judge Rashid won a medal for best orator of the University in 1935 and was acclaimed the outstanding debater of the University in the same year when he won the gold medal in the annual Henry W. Skinner Debate. He was a charter member of the Eta Chapter of Pi Kappa Delta, at University of Detroit, and was elected as secretary-treasurer of the organization. The following year he was elected chapter president. During his college days he was appointed to Alpha Sigma Nu, national Jesuit Honorary Society for scholarship.

He gained teaching experience by coaching speech and debate in Michigan high schools for four years. His professional experience in law commenced in 1939 when he went into private practice, in which he remained until 1945. He then was appointed assistant prosecuting attorney and in 1948 was named Chief Trial Lawyer for the Office of Prosecuting Attorney of Wayne County until he was given the assignment of Circuit Judge in December, 1956. He was directly in charge of two grand juries during that period. In an instructional capacity he has taught criminal law at the University of Detroit for nine years.

Judge Rashid now resides in Dearborn, Michigan, and is affiliated with several religious and civic organizations. Some of these include his membership of St. Alphonsus Parish, Dearborn; President of the Detroit Archdiocesan Council, national Council of Catholic Men; member of Knights of Columbus Council 305; Chairman of the Speaker's Bureau, National Council of Catholic Men; Vice-President of the University of Detroit Law Alumni Association; and Honorary First Vice-President of ALSAC (the organization begun by Danny Thomas and organized for the purpose of maintaining St. Jude's Hospital in Memphis, Tennessee, dedicated to the care, cure, and treatment of leukemia and related blood diseases).

Judge Rashid is a recognized lecturer before civic and religious groups and is known throughout the State of Michigan for his lectures on social and civic subjects.

Judge Rashid is married and the father of eight children, who are surely potential Pi Kapsters!

\* \* \*

**Hilary A. Bush**, Missouri's new lieutenant governor, is an alumnus of William Jewell College, Missouri Delta Chapter of Pi Kappa Delta (1926).

Bush, a lawyer in Kansas City, has been prominent in local political circles, and is well known as a political speaker with an oratorical flair. A few years ago he declared that his first interest in becoming a lawyer stemmed from his activity in college forensics at William Jewell.

During World War II Bush served in the army, entering as a captain and coming out as a lieutenant colonel. As judge advocate of the 81st Infantry Division, he was stationed for some time in occupied Japan.

---

He: "The trouble with women is that they take everything personally."

She: "Well, I certainly don't!"

---

A sharp tongue is the only edge tool that grows keener with constant use.—*Irving*

---

A word fitly spoken is like apples of gold in pictures of silver. —*Proverbs, 25:11*

---

Speech finely framed is a delight to the ears. *2nd Macabees*

# A SUGGESTED PI KAPPA

## DELTA PLEDGE TEST

1. What is the Greek phrase for which P K D stands and what is its meaning?
2. What is the purpose of the society?
3. Who is eligible for membership?
4. What classes of members are there?
5. Name the degrees of Pi Kappa Delta and give the jewel for each degree.
6. Name the orders of Pi Kappa Delta and give the jewel for each order.
7. How does one qualify for the degree of fraternity?
8. Draw a picture of the Pi Kappa Delta key.
9. What are the regulations about wearing the key?
10. Give the names of the national officers.
11. When was Pi Kappa Delta founded?
12. How many chapters of Pi Kappa Delta are there?
13. In what province is our chapter?
14. When was our chapter established?
15. What is the Greek letter of our chapter?
16. What are the colors of Pi Kappa Delta?
17. What is the flower of Pi Kappa Delta?
18. What are the duties of the chapter president?
19. What are the values received from participating in forensics?
20. How can our chapter make itself more valuable to \_\_\_\_\_ College?

The Pi Kappa Delta Ritual includes a Pledge Ceremony in which the candidate for membership is informed that he will be expected to pass a test on Pi Kappa Delta history, regulations, insignia, etc. No official pledge test has been made and this one has been prepared at the request of several chapters who recognize the need for a pledge test. Each chapter may make its own version of the pledge test by adding other questions or omitting any of those listed above that may not apply to the chapter.

## PI KAPPA DELTA PLEDGE CEREMONY

To the local chapters of the Fraternity the committee on new members recommends:

1. That some pledging ceremony be observed.
2. That in the use of initiation ritual and installation ceremony for officers to be used annually by the chapter, every reasonable effort should be made to make the ceremony as solemn as possible, and that no jests or "horse play" shall be closely associated with the actual ceremony.

The committee also recommends certain features, the use of which is optional with the local chapter.

That the candidates be brought into the room blindfolded.

That the room be darkened except for the three candles.

That all members wear black robes or gowns.

That a symbol of representation of the Pi Kappa Delta key, some ten or fifteen inches long, be made of brass, wood, or cardboard and used in the ceremony, especially to make plainer the key lecture.

### SUGGESTED PLEDGE CEREMONY

Many of our chapters for years now have followed the plan of holding some kind of pledge ceremony for newly elected members of Pi Kappa Delta. This ceremony has, of course, been held at some time previous to the regular initiation.

It has been suggested that in this connection each candidate should be required to pass an examination on the history, purpose and constitution of the Order. This suggestion meets with the hearty approval of the National Council. They propose the following method of procedure:

When a number of students have become eligible to membership, have their names voted upon by the chapter at a regular meeting, or if necessary at a called meeting. Then set a date for the examination and the pledge ceremony. The two may be combined or held separately. Notify the newly elected members of their election and tell them they are to appear for examination and pledge ceremony at a certain time and place.

Tell them to come prepared to fill out the membership application blank and to pay the national initiation fee and any additional fee required by the local chapter. (Forward the national fee and the membership application blank to the national secretary at once.)

At the same time tell the pledges that they will be expected to pass a creditable examination on the history, purpose and constitution of Pi Kappa Delta. Warn them to give particular attention to the requirements for the different degrees and orders in the society and the significance of the different jewels in the key.

When the tests have been completed and graded call the candidates before the chapter one at a time and question them about their errors, possibly having them look up, then and there, the answers to some of the questions they missed. When this is finished call all the candidates and proceed with the pledge ceremony. It is important to see that no copies of the questions are allowed to get away from the chapter officers, otherwise the examination could not be used more than once.

This procedure, of course, can be modified to suit the plans of the local chapters. The National Council, however, strongly urges that each chapter arrange to make initiation into Pi Kappa Delta a real event in the lives of the new members and not a mere matter of filling a blank and paying a fee.

(The following ceremony may be performed by an officer of the local chapter accompanied by one or more members of the chapter.)

**OFFICER:** Mr. ———, by virtue of your interest and participation in forensic work in this institution you have been invited to join the honorary forensic society known as Pi Kappa Delta. We understand that you have expressed your willingness to accept this invitation. Is our understanding in this respect correct?

**CANDIDATE:** It is.

**OFFICER:** Previous to the final ceremony of initiation, it is customary in this Order, as in many other orders, for the candidate to remain for a period of time in the condition of a pledge. In this condition, like the squires of old who had to endure trials which should determine their worthiness to be initiated into the mysteries of knighthood, he may be required to do the bidding of members of our Order and to submit to tests of fidelity, intelligence, disposition and character. Are you, therefore, willing during such a period to submit yourself to all reasonable behests of the Order?

**CANDIDATE:** I am.

**OFFICER:** In token of this willingness, I do here attach to you this ribbon which is to be worn by you on all public occasions until time when you are finally initiated into our Order: (Officer pins the pledge ribbon to lapel of candidate's coat) and I hereby greet you as a pledge of the honorary forensic society of Pi Kappa Delta.

(Note: If the local chapter holds a mock initiation in addition to the real one, it is earnestly requested that it be separated in time sufficiently from the serious initiation that the dignity and beauty of the latter be not impaired.)

## PI KAPPA DELTA

## SUPPLIES AND SERVICES

*(The following information from the office of the National Secretary-Treasurer is printed for the benefit of all chapters.)*

### MEMBERSHIP APPLICATIONS FORM A

The Form A application should be used when applying for membership for the first time. The initiatory fee should accompany the application. The name of each new member is entered in the grand catalog in the order in which applications are received and each new member is assigned a permanent number. Membership cards are prepared for all new members and an 8½x11 certificate, suitable for framing, is issued for an additional charge of 25c.

## **MEMBERSHIP APPLICATIONS FORM B**

The Form B application should be used for members applying for advanced standing. Members are urged to bring their standing up to date from year to year. Membership cards showing the new degree and order are issued without charge.

### **KEY ORDER BLANKS**

All orders for keys should be made on the official blank, accompanied by the necessary fees. Credit orders cannot be accepted except when bills are to be sent to the finance office of the institution. Orders for advanced degrees should be accompanied by membership application for advanced standing. All keys are made on special order, with the name of the school and the owner engraved on the back. Two to six weeks should be allowed for the completion of keys. Orders to be delivered before the end of the school term should be placed not later than April 15.

### **HISTORY OF PI KAPPA DELTA**

The history of Pi Kappa Delta was printed in THE FORENSIC of March, 1960. Reprints of this history may be obtained from the National Secretary. Chapter officers will find useful information in the history for the initiatory ceremony and local publicity.

### **PI KAPPA DELTA INFORMATION BROCHURE**

A brochure containing questions and answers about Pi Kappa Delta has been prepared for distribution to prospective members, and others desiring information about Pi Kappa Delta. These are available from the Office of the National Secretary without charge.

### **STATIONERY**

Official Pi Gamma Delta stationery may be ordered directly from the L. G. Balfour Company, Attleboro, Massachusetts. A limited supply is kept on hand by the National Secretary. Mats of the Pi Kappa Delta key will be provided for chapters who prefer to have stationery printed locally.

### **PLEDGE TEST AND RITUALS**

Copies of the pledge ceremony and initiation are available for chapter officers. We do not supply these materials for all members. Each chapter may make additional copies for their own use.

### **PI KAPPA DELTA CONSTITUTION**

Copies of the constitution are provided for all new members, and each should become familiar with the requirements for the different degrees and orders.

### **DESK CALENDARS**

Each chapter will be sent a desk calendar at the beginning of the new year. Some chapters purchase additional calendars for their members and alumni. These may be ordered directly from the Carcross Company, Taunton, Massachusetts. Small orders may be supplied by the National Secretary.

### **PLACE CARDS**

Official Pi Kappa Delta place cards for banquets are provided without charge.

### **DECALS**

Pi Kappa Delta decals may be ordered from the National Secretary for 5c each.

### **POCKET CALENDARS**

Pocket calendars for all members and pledges may be secured from the National Secretary. These will be mailed to reach chapters about January 1.

### **THE PI KAPPA DELTA KEY**

The badge of Pi Kappa Delta is the key. It is distinctive in its use of jewels to denote the degree and order earned by the wearer and because of the jewel combinations is one of the most beautiful keys designed for any organization.

The key is available in three sizes. The large or fob size is usually worn by men as a pendant from a watch chain. Some men prefer the small or lavalier size. The women

usually prefer the lavalier or the miniature size, the latter coming only with a pin attachment. A pin may be attached to either of the larger sizes but the fob does not lend itself as readily to wearing as a pin.

The keys come in bright or dull gold finish, the choice of which is a matter of preference. Special distinction members may order a key of white gold if they wish.

All keys are numbered and are engraved with the member's name or initials, and his college. The number, type, and size of key are registered in the office of the National Secretary so that at any time in the future a replacement may be ordered. The official jewelers for Pi Kappa Delta are the L. G. Balfour Company, Attleboro, Massachusetts.

## **THE JEWELS**

The jewel in the uppermost part of the key denotes the order to which the member belongs. If of the order of debate, the jewel is a pearl; of oratory, a ruby; or instruction, an emerald; any combination of two orders, a turquoise; and all three orders, a diamond. Honorary membership is indicated by a sapphire in the circle.

The jewel in the eye reveals the degree which the member has attained. The first degree, fraternity, is shown by a ruby; proficiency by an amethyst; honor by an emerald; and special distinction by a diamond. Members may wear jewels of lesser rank than that to which they are entitled and because of the greater cost of diamonds some special distinction members wear the emerald of the degree of honor.

## **GUARD CHAINS AND INITIALS**

Guard chains with or without initials may be ordered for keys which are to be worn as pins. The initial is the Greek letter of the chapter to which the member belongs; e.g., if it is the Alpha chapter of the state the member would order the initial Alpha. There is no provision for personal initials of the member.

## **REJEWELING AND EXCHANGES**

Any member of Pi Kappa Delta may have the jewels changed in his key to show changes in degree or order. Full credit is allowed for the price of all jewels except pearls and amethysts when new jewels are ordered. In addition to the cost of the new jewels, there is a fifty cent rejeweling charge plus the fifty cent handling charge levied by Pi Kappa Delta.

When yellow gold keys are exchanged for white gold keys a credit allowance is made. The same allowances are made for jewels turned in on such an exchange as in rejeweling orders. If credit is expected on a yellow gold key it must be sent with the order for the white gold key.

## **BELT LOOP**

The Balfour Company now makes a belt loop from which a key may be suspended for men who do not wear a watch chain. This is available in sterling at \$1.12 (including tax) or in a gold finish at \$2.24 (including tax).

## **HOW TO ORDER**

All orders must be placed with the National Secretary, D. J. Nabors, East Central State College, Ada, Oklahoma. The official price list includes all charges such as taxes and handling charges, except that if the order includes a pin attachment, guard chain or initial, or is of white gold, that charge must also be added.

If keys are to be paid for out of funds received through taxes by state supported institutions which are not allowed by law to pay an excise tax on such funds, a tax exemption certificate duly signed by an authorized official must accompany the order.

Members should be sure that the degree and order shown on the membership card entitles them to the key requested. If not, an Advanced Standing Application (Form B) should be submitted with the key order.

## **FOR INFORMATION ON THESE AND OTHER MATTERS WRITE TO:**

D. J. NABORS, *National Secretary*  
East Central State College  
Ada, Oklahoma

# PRICE LIST

Prices include all taxes and handling charges.

<i>Degree</i>	<i>Miniature (WITH PIN)</i>	<i>Small (LAVALIERE)</i>	<i>Large (FOB)</i>
<b>DEBATE</b>			
	(Pearl)		
Fraternity (Ruby) .....	\$ 5.00	\$ 5.60	\$ 6.70
Proficiency (Amethyst) .....	5.00	5.60	6.70
Honor (Emerald) .....	5.60	6.15	7.25
Special Distinction (Diamond) .....	8.20	10.35	13.75
<b>ORATORY</b>			
	(Ruby)		
Fraternity .....	\$ 5.85	\$ 6.40	\$ 7.55
Proficiency .....	5.85	6.40	7.55
Honor .....	6.40	7.00	8.10
Special Distinction .....	8.95	11.20	14.55
<b>TWO ORDERS</b>			
	(Turquoise)		
Fraternity .....	\$ 5.85	\$ 6.40	\$ 7.55
Proficiency .....	5.85	6.40	7.55
Honor .....	6.40	6.95	8.10
Special Distinction .....	8.95	11.20	14.55
<b>THREE ORDERS</b>			
	(Diamond)		
Fraternity .....	\$ 8.95	\$11.20	\$14.55
Proficiency .....	8.95	11.20	14.55
Honor .....	9.50	11.75	15.10
Special Distinction .....	12.03	15.98	21.53
<b>INSTRUCTION</b>			
	(Emerald)		
Fraternity .....	\$ 6.40	\$ 6.95	\$ 8.10
Proficiency .....	6.40	6.95	8.10
Honor .....	6.95	7.55	8.65
Special Distinction .....	9.50	11.75	15.10
<b>HONORARY</b>			
	(Sapphire)		
Fraternity .....	\$ 5.85	\$ 6.40	\$ 7.55
Proficiency .....	5.85	6.40	7.55
Honor .....	6.40	6.95	8.10
Special Distinction .....	8.95	11.20	14.55

## SPECIAL CHARGES

For Pin attachment on large and small sizes add \$1.15.

For white gold (special distinction only) add \$1.15.

Guard chain with gold initial pin (chapter Greek letter) add \$1.70.

Charge for changing jewels in old keys, 50 cents.

Allowances: Gold in yellow gold keys exchanged for white gold  
large and small keys; \$1.50 Miniature; \$1.00.  
Full value will be allowed on rubies, sapphires, and turquoises and emeralds  
exchanged for new jewels or white gold key.

Handling charge for changing jewels in old keys, 50 cents.

Address all key orders to the National Secretary:

D. J. Nabors  
East Central College  
Ada, Oklahoma

# NEW MEMBERS OF PI KAPPA DELTA

## Montana State College

- 33639 Dr. Roland R. Renne  
33640 Deanna Leer

## East Tennessee State College

- 33641 Thomas Wheeler Ledbetter

## Baylor University

- 33642 Charles Gordon Metcalf

## Wake Forest College

- 33643 Robert Edward Day  
33644 Alfred Lee Baker  
33645 John Glenn Blackburn  
33646 Edward L. Boggs  
33647 George P. Hemstreet  
33648 William Claiborne Hopkins  
33649 Eura DuVal Gaskins, Jr.  
33650 Charles H. Taylor  
33651 Hans-Ulrich Zieten

## Whitman College

- 33652 Kenneth Garrison  
33653 Neil Charles Buren  
33654 Woodford Bates Baldwin  
33655 Robert Donald Snelling

## Tabor College

- 33656 Dwight Wiebe

## Rockhurst College

- 33657 Joseph Anthony Dill  
33658 Pat Miller  
33659 Bill Pickett

## Whitewater State, Wisconsin

- 33660 David A. Engen

## Pasadena College

- 33661 Carol J. Drew

## Concordia College

- 33662 Waldmar E. Lillo

## Western Washington

- 33663 Karen Helene Fortin

## Pasadena College

- 33664 F. Don Burkhart

## Drury College

- 33665 Mack Allen Player  
33666 Charles Henry Harryman  
33667 Robert Layne Morrill  
33668 Susan Ellen Pratt  
33669 Bill Hart  
33670 Bill Mauck

## Grove City College

- 33671 Russell A. Thomas  
33672 Theodore T. Blair  
33673 Daniel E. Zerfass  
33674 Jan M. Machen

## Los Angeles St. College

- 33675 Catherine C. La Courreye  
33676 Donald Simpson Bradley

- 33677 Harvey William Harper

- 33678 Arthur Simonion

## Southeast Mo. State

- 33679 Elizabeth Ann Maring  
33680 Sally Ann Webb  
33681 Norvin Rondol Bowen

## Harding College

- 33682 Fred LeRoy Lemmon  
33683 Georgie Ann Claypool  
33684 J. Lynn Rhodes  
33685 Tom Blake  
33686 Dennis Raymond Cox  
33687 Glynn Parker  
33688 Joal E. Anderson, Jr.  
33689 Jerry Wayne Thompson  
33690 Wayne Arnold

## Whitworth College

- 33691 Barbara Lecky  
33692 Alice Elaine Dean

## College of Pacific

- 33693 James D. Oliver  
33694 Kathy Berg  
33695 David Boies, II  
33696 John Lee Francis  
33697 Warren S. Lee  
33698 Kathleen Ann Lange  
33699 Stanford Huntington Rowe  
33700 Mike Rose  
33701 Jim Thor

## Southeast Mo. State

- 33702 Geraldine Duke

## Whitewater State, Wisconsin

- 33703 Frederick C. Malcolmson  
33704 Peggy Reuter  
33705 Ruth Ann Headley  
33706 Linn Charles Klitzkie

## Idaho St. College

- 33707 Dr. Donald Walker

## Heidelberg

- 33708 Kenneth Ford Gordon  
33709 Thomas Wetzel  
33710 Marge Brunke  
33711 Richard James Campbell  
33712 Valerie Marie St. John

## Bethany College

- 33713 James D. Williams  
33714 Harold Edwin Rees  
33715 Conrad Birger Nelson  
33716 D. Dennis Simons  
33717 Kenneth D. Carmichael

## Kearney St., Nebraska

- 33718 Dale Osborn  
33719 Jesse Foster

## Idaho St. College

- 33720 Robert T. Acorda  
33721 Ralph Anderson

- 33722 Ray Anderson  
33723 Sharon Bartlett  
33724 Chester G. Cooper  
33725 Charles Folk  
33726 Meredith Goodey  
33727 Peter Chauvenet Nichols  
33728 Raymond Russell  
33729 Lawrence Silvey  
33730 Patricia Webster

## S. D. School of Mines

- 33731 Douglas E. Alderich  
33732 Calvin M. Anderson  
33733 Michael J. Bezenek  
33734 Everett E. Bloom  
33735 Henry W. Foglesong  
33736 Richard L. Haeder  
33737 Keith A. Kitzman  
33738 David J. Murray  
33739 J. Monte Smith  
33740 James Wilhelm  
33741 Howard H. Wells  
33742 C. Merle Rowe

## College of Emporia

- 33743 John Dale Beard  
33744 Daniel Francis Collins  
33745 Michael A. Dubenchief  
33746 Josh Freedman  
33747 Martin C. Schwartzberg

## University of Illinois, Chicago

- 33748 Larry Alan Sarnowski  
33749 Howard Gordon

## Phillips University

- 33750 David J. Seitz  
33751 Byron Keith Moore  
33752 Dorothy Cabett Becker

## S. D. School of Mines

- 33753 Neil Olien

## Lewis and Clark

- 33754 William John Towne

## University of Omaha

- 33755 James F. Fargher  
33756 Rod Hansen  
33757 Gilbert Lee Whiteman  
33758 Max Voigt

## University of Kansas City

- 33759 Dr. Patricia McIlrath

## Wisconsin State, Whitewater

- 33760 David G. Gourlie  
33761 Beverly Heinisch  
33762 Ronald Jacobson

## Phillips University

- 33763 Martha Jones  
33764 Marian Annette Hood

## Southern State Teachers, S. D.

- 33765 Ellen Ann Stuen

33766 Paul B. Hall  
33767 Kenneth Hansen

#### **Phillips University**

33768 Martin F. Klingenberg  
33769 Patricia Davis

#### **Louisiana College**

33770 Charles A. Parker

#### **Westmar College**

33771 Charles William Fuller  
33772 Judy Leaming  
33773 Robert H. Heim  
33774 Raymond Harry Kintz  
33775 James R. Fletcher  
33776 Lynn H. Humston  
33777 James Dale Grosshans

#### **Kansas State, Pittsburg**

33778 Barbara Clark  
33779 Alleen Diklich  
33780 Robert G. Bosseau  
33781 Paul Alan Page  
33782 Marcia Rowe  
33783 Paul Harper

#### **Pacific Lutheran University**

33784 Joan Barbara Maier

#### **Westmar College**

33785 Donald Curtis Nichols

#### **Northeast M.S.T.C., Kirksville**

33786 Marilyn Rhoads  
33787 Elliott Edelstein

#### **Phillips University**

33788 Coletta Mae Reid

#### **Illinois Wesleyan University**

33789 Garr Becker  
33790 Lynda Bradley  
33791 Laura Ellen Joseph  
33792 Sarah Jo Long  
33793 James Albert Panowski  
33794 Donald Roth  
33795 Mary Janet Zartman

#### **Morningside College**

33796 Bob Iverson  
33797 Alan Stone  
33798 Gerald Anderson  
33799 Terry Ford  
33800 Kevin Hargreaves  
33801 Maroldine Smith  
33802 Jerald Kantrovich  
33803 J. Richard Palmer

#### **Southwestern, Winfield**

33804 Bill Hill  
33805 Elbert Rinkel  
33806 Shirley Tribble  
33807 Jo Pat Johnson  
33808 Carol Prather

#### **Georgetown College**

33809 Barbara Gayle Holland  
33810 Patsy Ann Baugh  
33811 Richard A. Crofts

#### **Sterling College**

33812 Sara P. Thorburn  
33813 David L. DeBruler  
33814 Rozita Jones  
33815 William Van Loan  
33816 Elmer Leroy Birney

#### **Hope College**

33817 Peter Eppinga  
33818 Herbert K. Tillema  
33819 W. Leonard Lee  
33820 Mary Jane Veurink  
33821 James Schaaap  
33822 David Kleis

#### **Eau Claire St., Wisconsin**

33823 Richard Duesterbeck  
33824 Reed Mackenzie  
33825 Karen O'Niel

#### **Linfield College**

33826 John H. Adkins

#### **Central College, Missouri**

33827 John A. Schneider  
33828 Kenneth D. Meals  
33829 Anne Raine  
33830 William Hix  
33831 Robert D. Crowe, II

#### **University of Illinois, Chicago**

33832 Karen Jahnke

#### **Ouachita Baptist**

33833 Don K. Wright

#### **Pasadena College**

33834 Daniel Webster Green  
33835 Kay Galland  
33836 Thomas D. Floyd  
33837 Joan E. Schwicker  
33838 Barbara Senf  
33839 Kay Taylor  
33840 Donna Lee Fletcher

#### **McKendree College**

33841 Roger Knox  
33842 Carolyn Anne Webb

#### **University of Kansas City**

33843 Fred Wilkins  
33844 Richard Harold Replogle  
33845 William O. Isenhous  
33846 Rory Vincent Ellinger  
33847 Russell Kissir  
33848 William C. Crawford  
33849 Patricia Desting Williams  
33850 Roy V. Luper  
33851 Robert Craven  
33852 Albert E. Grauberger  
33853 John Maclean Dauvergne  
33854 Evelyn Marxsen

#### **Ferris Institute**

33855 Mervyn Edward McNamara  
33856 Lang Coleman  
33857 Clark Bond  
33858 Stanley J. Peirce  
33859 Andrew Jackson  
33860 John Arnold Pawlowski  
33861 Robert Kay Moore

33862 Joan Marie Desarmeaux  
33863 Marsha H. Peckham  
33864 Karen Carpenter  
33865 Patricia May O'Donnell  
33866 Howard J. Hulsman  
33867 Warren Stuk

#### **Lewis and Clark College**

33868 Sandra Sue Ratliff

#### **Carroll College**

33869 C. W. Huber  
33870 William A. Shields  
33871 Michael Nash  
33872 Jo Ann Sprute  
33873 Frank C. Seitz  
33874 Daniel J. Smith

#### **Illinois College**

33875 William H. Hitt  
33876 Darlene Jean Hughes

#### **Southeastern, Oklahoma**

33877 George Morrow  
33878 Jeanne Brady  
33879 Charles T. Choate  
33880 William C. Armstrong  
33881 LeLoa Faye Holder  
33882 Charles R. Andrews

#### **Buena Vista College**

33883 Joseph K. Meusey  
33884 Rodney Van Klompenburg

#### **University of Puget Sound**

33885 Shari Butler  
33886 Verna Peterson

#### **Whitman College**

33887 Theodore W. Meckstroth

#### **Wisconsin State College, River Falls**

33888 Barbara Ann Gherty

#### **Lamar State College**

33889 Frank Myers  
33890 Linn Sergeant Kovar  
33891 Kathy Williams  
33892 Rexford Anderson

#### **Eastern Illinois University**

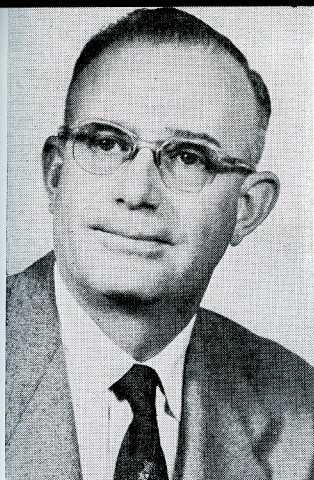
33893 Linda Kay Speary

#### **Los Angeles State College**

33894 Linda James  
33895 Jim W. Simmons  
33896 Talmadge Jones  
33897 Vivian Cienfuegos

#### **San Fernando Valley State College**

33898 Rachael Ann O'Brien  
33899 Patricia Rae Donnelly  
33900 Patrick Briggs  
33901 Fred Marshall Estrin  
33902 James Murphy  
33903 Paul Treat, II  
33904 Donald J. Ritchie  
33905 Gary G. Collier  
33906 Nancy M. Chaffin



**D. J. Nabors**

## *The Secretary's Page*

### **PI KAPPA DELTA POLICIES**

In this issue I would like to set down some of the major policies for which it seems to me Pi Kappa Delta should stand in the decade ahead of us.

1. It should serve as the balance wheel on the forensic machine. It should help in the fight against over-emphasis on winning, but it should not allow that fight to destroy the whole forensic game. It should and does oppose those extremists who would turn forensic contests into a series of uninteresting, pointless, ignorance-revealing, namby-pamby, wind-jamming sessions, and it insists that they shall continue to be vital, purposeful, fact-revealing, vigorous, conclusion-reaching discussions. To do so Pi Kappa Delta must keep the element of competition but must not allow that element to overshadow the real purpose of forensics, training in effective speaking.

2. It should by all means retain the essentials of good debating: thorough knowledge of the subject, careful analysis, rigorous argument, and careful organization; but at the same time it should instill into our debates more of the sparkle and interest that is so woefully lacking in many of them today. Let us insist that our debaters be interesting, entertaining, yes, even humorous at times; and that at the same time they continue to be logical and instructive.

3. We need to see to it that the forensic program in our colleges is *extensive* rather than *intensive*. The benefits of intercollegiate competition in speech should be spread to as many students as possible instead of being restricted to a few outstanding performers who don't need them much anyhow. It is certainly far better to have a hundred students engaging in one debate than to have two or three students engaging in one hundred debates.

**THE ART OF PERSUASION**  
**—BEAUTIFUL AND JUST**