

56. Oklahoma City (No. 2), negative, vs. Fairmount, affirmative; won by Oklahoma City.
57. Grand Island, negative, vs. Intermountain Union, affirmative; won by Grand Island (default).
58. South Dakota State, negative, vs. Kansas State Teachers of Pittsburg (No. 2), affirmative; won by Pittsburg.
59. Heidelberg, negative, vs. Oklahoma Baptists, affirmative; won by Heidelberg.
60. Simpson, negative, vs. Jamestown, affirmative; won by Jamestown.
61. Nebraska Wesleyan, negative, vs. Kalamazoo, affirmative; won by Nebraska Wesleyan.
62. Morningside, negative, vs. St. Thomas, affirmative; won by Morningside.
63. College of Emporia, affirmative, vs. Culver-Stockton, negative; won by Emporia.
64. Bethany (No. 2), affirmative, vs. Westminster, negative; won by Bethany.

Round Three—4:30 P. M.

65. Sterling, affirmative, vs. Kansas State Teachers of Emporia, negative; won by Emporia.
66. William Jewell, negative, vs. Colorado Agricultural College; won by William Jewell.
67. Eureka, affirmative, vs. Colorado Teachers (No. 1), negative; won by Eureka.
68. Washburn, affirmative, vs. Kansas State Teachers of Pittsburg (No. 1), negative; won by Pittsburg.
69. General Chapter (represented by Kansas City Junior College) affirmative, vs. Central of Missouri, negative; won by General Chapter.
70. Heidelberg, affirmative, vs. Jamestown, negative; won by Heidelberg.
71. Nebraska Wesleyan, affirmative, vs. Morningside, negative; won by Morningside.
72. College of Emporia, affirmative, vs. Bethany (No. 1), negative; won by Emporia.
73. University of California, Southern Branch, affirmative, vs. Dakota Wesleyan, negative; won by California.
74. Kalamazoo, affirmative, vs. Augustana, negative; won by Augustana.
75. Dubuque, affirmative, vs. Missouri Wesleyan, negative; won by Dubuque.
76. South Dakota State, negative, vs. Northwestern Teachers of Oklahoma, affirmative; won by Oklahoma.
77. Bradley, affirmative, vs. Montana State, negative; won by Bradley (default).

78. Oklahoma Baptist, affirmative, vs. Simpson, negative; won by Simpson.
79. Kalamazoo, affirmative, vs. St. Thomas, negative; won by St. Thomas.
80. Culver-Stockton, affirmative, vs. Westminster, negative; won by Westminster.
81. Upper Iowa, affirmative, vs. Northwestern, negative; won by Northwestern.
82. Oklahoma A. and M. College, affirmative, vs. Kansas State Teachers of Hays, negative; won by Kansas.
83. Bethany (No. 2), affirmative, vs. St. Olaf, negative; won by St. Olaf.
84. Carthage, negative, vs. Gustavus Adolphus, affirmative; won by Carthage.
85. Colorado Teachers (No. 2), negative, vs. Western Union, affirmative; won by Western Union.
86. Northern Teachers of South Dakota, negative, vs. Southwestern, affirmative; won by Northern Teachers.
87. Franklin, negative, vs. Oklahoma City, affirmative; won by Oklahoma City.
88. Grand Island, negative, vs. Kansas State Teachers of Pittsburg (No. 2), affirmative; won by Kansas.

Round Four—7:30 P. M.

89. Kansas State Teachers of Emporia, negative, vs. William Jewell, affirmative; won by William Jewell.
90. Eureka, negative, vs. Kansas State Teachers of Pittsburg (No. 1), affirmative; won by Eureka.
91. General Chapter (represented by Kansas City Junior College), negative, vs. Heidelberg, affirmative; won by General Chapter.
92. Morningside, affirmative, vs. College of Emporia, negative; won by Emporia.
93. Sterling, affirmative, vs. Colorado Agricultural College, negative; won by Sterling.
94. Colorado Teachers (No. 1), negative, vs. Washburn, affirmative; won by Washburn.
95. Central of Missouri, affirmative, vs. Jamestown, negative; won by Central of Missouri.
96. Nebraska Wesleyan, affirmative, vs. Bethany, negative; won by Nebraska Wesleyan.
97. University of California, Southern Branch, negative, vs. Augustana, affirmative; won by Augustana.
98. Dubuque, negative, vs. Northwestern Teachers of Oklahoma, affirmative; won by Dubuque.
99. Bradley, negative, vs. Simpson, affirmative; won by Simpson.

100. St. Thomas, affirmative, vs. Westminster, negative; won by Westminster.
101. Kansas State Teachers of Hays, negative, vs. Northwestern, affirmative; won by Northwestern.
102. Carthage, negative, vs. St. Olaf, affirmative; won by Carthage.
103. Western Union, negative, vs. Northern Teachers of South Dakota, affirmative; won by Northern Teachers.
104. Oklahoma City, negative, vs. Kansas State Teachers of Pittsburg (No. 2), affirmative; won by Pittsburg.

Round Five—9:00 P. M.

105. William Jewell, affirmative, vs. Eureka, negative; won by Eureka.
106. College of Emporia, negative, vs. General Chapter (represented by Kansas City Junior College), affirmative; won by General Chapter.
107. Kansas State Teachers of Emporia, affirmative, vs. Kansas State Teachers of Pittsburg (No. 1), negative; won by Emporia.
108. Heidelberg, negative, vs. Morningside, affirmative; won by Morningside.
109. Sterling, affirmative, vs. Washburn, negative; won by Washburn.
110. Nebraska Wesleyan, negative, vs. Central of Missouri, affirmative; won by Central of Missouri.
111. Augustana, affirmative, vs. Dubuque, negative; won by Augustana.
112. Simpson, negative, vs. Westminster, affirmative; won by Simpson.
113. North-Western, affirmative, vs. St. Olaf, negative; won by St. Olaf.
114. Kansas State Teachers of Pittsburg (No. 2), negative, vs. Northern Teachers of South Dakota, affirmative; won by Northern Teachers.

Round Six—March 30, 8:30 A. M.

115. Eureka, negative, vs. General Chapter (represented by Kansas City Junior College), affirmative; won by Eureka.
116. William Jewell, negative, vs. College of Emporia, affirmative; won by College of Emporia.
117. Kansas State Teachers of Emporia, negative, vs. Morningside, affirmative; won by Emporia.
118. Washburn, affirmative, vs. Central of Missouri, negative; won by Central of Missouri.
119. Augustana, negative, vs. Westminster, affirmative; won by Augustana.

Round Seven—10:00 A. M.

120. Eureka, affirmative, vs. College of Emporia, negative; won by College of Emporia.

121. Kansas State Teachers of Emporia, affirmative, vs. Augustana, negative; won by Emporia.
122. Central of Missouri, affirmative, vs. General Chapter (represented by Kansas City Junior College), negative; won by Central of Missouri.

Northern Teachers of South Dakota drew a bye.

Round Eight—7:30 P. M.

123. Eureka, affirmative, vs. Northern Teachers of South Dakota, negative, won by Northern Teachers.

Kansas State Teachers of Emporia drew a bye.

124. Central of Missouri, negative, vs. College of Emporia, affirmative; won by College of Emporia.

Round Nine—March 31, 9:00 A. M.

125. Northern Teachers of South Dakota, negative, vs. Kansas State Teachers of Emporia, affirmative; won by Northern Teachers.

College of Emporia drew a bye.

Round Ten—April 1, 11:00 A. M.

126. College of Emporia, affirmative, vs. Northern Teachers of South Dakota, negative; won by College of Emporia.

MEN'S ORATORICAL CONTEST

Fort Collins, Colorado

March 29, 1926, 8:00 P. M.

Group One.



ROGER WALSH, Redlands.
The Winning Orator

1. "The Epic of the Cowboy", William Orr, Colorado Agricultural College.
2. "Warped Ratios", Kingsley Given, Park College.
3. "The Branding Iron", John Casteel, Nebraska Wesleyan University.
4. "Alae Potentia", Ward Foster, California Institute of Technology.
5. "Give Us Understanding", G. Larson, Morningside College.
6. "The Constitution", Walter Emery, Oklahoma Baptist University.

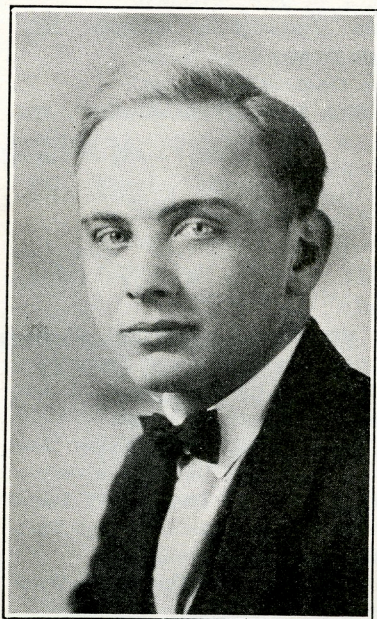
Group Two.

7. "American Values", Dwight Cart, Simpson College.
8. "The Echo", H. Thompson, Western Union College.
9. "The Hearth Relighted", Leslie Nimmo, Illinois Wesleyan University.
10. "The Duty of the American Youth", Robert Kroeze, Jamestown College.

11. "Enemies of Liberty", Edward Wilson, North Carolina State College.
12. "American Ideals", H. Burnett, Kansas State Teachers College of Hays.
13. "The Rising Tide", F. S. James, Wofford College.

Group Three.

14. "Wheels Without Souls", Roger Walsh, University of Redlands.
15. "The Charnel House", John Staffeld, North-Western College.
16. "Carnival of Crime", Emil Sunley, Kansas State Agricultural College.
17. "Fools or Wise Men", Theodore Brameld, Ripon College.
18. "Democracy, Hypocrisy, Mussolini", Albert Howard, William Jewell College.
19. "Peace by Statesmanship", F. K. Horton, Louisiana College.
20. "The Industrial Era", Karleton Crain, Upper Iowa University.

Group Four.

JOHN STAFFELD, North-Western
Second of the thirty-nine orators

21. "Jungle Law", M. Hogue, Augustana College.
22. "Our Negative Heritage", J. W. Campbell, Sterling College.
23. "The Sequence of Life", Carl England, Baldwin Wallace College.
24. "The Nation's Challenge to College Men", Paul Hutchinson, University of California, Southern Branch.
25. "The Greater America", B. C. Herrick, Des Moines College.

Group Five.

26. "The Fight for Truth", C. G. Swanson, Colorado Teachers College.
27. "The Federal Octopus", R. W. Beatty, Montana State College.
28. "Take Your Choice", Joseph Owen, Kansas Wesleyan University.
29. "Democracy Triumphant", L. W. Ashby, Hastings College.
30. "Lawlessness of the City," Harold Smith, South Dakota State College.

31. "What of the Night?" L. H. DeBow, Kalamazoo College.
32. "The Present Crisis", C. Wilkins, Central College of Iowa.

Group Six.

33. "Color", Robert Bartlett, Parsons College.
34. "The Will for Peace", Herbert Penick, Central College of Missouri.
35. "The Power Within", Rufus Logan, St. Olaf College.
36. "Mohandas Ghandi, the Prophet of India", Lester Thonssen, Huron College.
37. "The Fate of a Nation", Elwyn Wherry, Cotner College.
38. "The Measure of Mars", Raymond D. Walter, Grove City College.
39. "The Individual World Attitudes", Glen Coffin, Western State College.

SEMI-FINALS

Group One—March 30, 9:00 A. M.

1. "The Echo", Harry Thompson, Western Union College.
2. "The Will for Peace", Herbert M. Penick, Central College (Missouri).
3. "The Branding Iron", John Casteel, Nebraska Wesleyan University.
4. "The Hearth Relighted", Leslie Nimmo, Illinois Wesleyan University.
5. "The Power Within", Rufus T. Logan, St. Olaf College.
6. "The Sequence of Life", Carl D. England, Baldwin Wallace.
7. "Carnival of Crime", Emil Sunley, Kansas State Agricultural College.
8. "American Values", Dwight Cart, Simpson College.
9. "Jungle Law", Marcus Hogue, Augustana College.

Group Two.

10. "Warped Ratios", Kingsley Given, Park College.
11. "Wheels Without Souls", Roger Walsh, University of Redlands.
12. "Democracy Triumphant", L. W. Ashby, Hastings College.
13. "Color", Robert Bartlett, Parsons College.
14. "The Epic of the Cowboy", William Orr, Colorado Agricultural College.
15. "Take Your Choice", Joseph Owen, Kansas Wesleyan University.
16. "Our Negative Heritage", J. W. Campbell, Sterling College.
17. "The Charnel House", John Staffeld, North-Western College.
18. "Lawlessness of the City", Harold Smith, South Dakota State College.

Finals

Stanley Hotel, Estes Park, Colorado
March 31, 1926, 8:00 P. M.

First.

"Wheels Without Souls", Roger Walsh, University of Redlands.

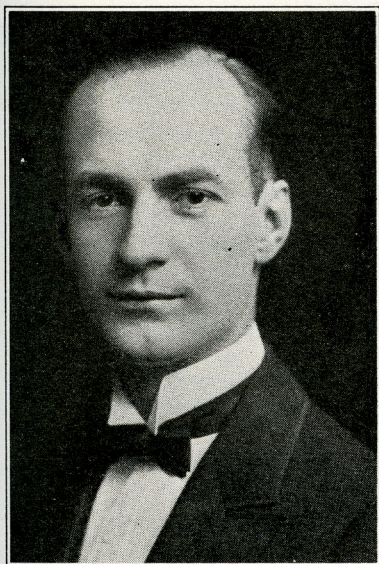
Second.

"The Charnel House", John Staffeld, North-Western College.

Third.

"Warped Ratios", Kingsley W. Given, Park College.

"American Values", Dwight Cart, Simpson College.



K. W. GIVEN, Missouri Beta
Third in men's oratory

"Jungle Law", Marcus Hogue, Augustana College.

"The Nation's Challenge to College Men", Paul Hutchinson, University of California, Southern Branch.

"The Power Within", Rufus Logan, St. Olaf College.

* * *

PI KAPPA DELTA BANQUET

April 1, 1926, 7:00 p.m.

The Stanley Hotel, Estes Park, Colorado

Menu

Canape Catalina

Gumbo Louisianne

Mixed Olives

Radishes

Mountain Trout, Meuniere

Roast Chicken

Potato Croquettes

Colorado Peas

Combination Salad

Surprise Ice Cream

Cakes

Coffee

PROGRAM

Alfred Westfall, National President, Presiding

"Extension and Decisionless Debates in Wisconsin," Theodore Brameld, Ripon College.

"Agricultural News Over the Radio," Carmelita Woodworth, Linfield College.

Violin Solo, Editha Todd, Colorado Agricultural College.

"The Evolution of Forensics," Charles A. Marsh, Past National President, University of California, Southern Branch.

"You Haven't Lost Anything Yet," J. D. Coon, National Counsel, Sioux Falls, South Dakota.

Vocal Solo, Gertrude Graham, Student Representative on the National Council, Park College.

"Some Observations on Forensics," Stanley B. Houck, National President, Delta Sigma Rho.

CONVENTION REGISTER

ARKANSAS

Alpha—Henderson—Brown

J. P. McConnell
P. W. Turrentine

Beta—Ouachita College

H. Westmoreland

CALIFORNIA

Alpha—University of Redlands

Mrs. Van Camp
Helen Gale Irwin
Virginia Reed
W. C. Dennis
Roger R. Walsh
Dwayne Orton
Warren Van Camp

Beta—Occidental

Ruby McDonald

Gamma—California Institute of Technology

Wayne Rodgers
Robert Ross
Ray E. Untereiner
Ward Goster
Ed Cornelison

Delta—College of the Pacific

Orville C. Miller
Mrs. Mabel Barron
Hazel H. Kelly
Edgar E. Wilson
Bernard Collins

Epsilon—University of California Southern Branch

Helen Jackson
Dorothy Thompson
Virginia Shaw
Charles Schottland
Paul Hutchinson
Charles A. Marsh
W. H. Veatch

COLORADO

Alpha—Colorado Agricultural College

H. M. DeWeerd
R. Bruce McKeown
R. W. Foard
Maude Blakeslee
Charlotte Baker
Editha Todd
Wilbur Skinner
Ruth J. Wattles
Alfred Westfall
Mrs. Alfred Westfall
Mrs. S. L. Macdonald

Frances Jones
Olga Nelson
Uerna Damke
Helen Kretzschmar
Janet Keating
Lorna Farmer
Dorothy Douglass
Irene Ingraham
Alpha Powell
Mary Baber
Marjorie Mayer
Ethel Chubb
W. O. Orr
Gerald Arnold
Irvin Murphy
Charles Haines
Roderick Macdonald
Earl Lory
Vern Warden
Francis Warden
Ralph Glascock
Leland Lamb
Harold Lawrence
W. C. Bell
Harry Budine

Beta—Colorado Teachers College

Cyrus Albertson
Harold Randall
Mrs. Cyrus Albertson
Wm. E. Babcock
Cliestie Barger
Muriel Bennett
W. C. Binneweis
Mrs. W. C. Binneweis
John E. Bothell
Geo. Bowman
Hazel Brown
Zula Charlsworth
Edith Emperor
Fern Fender
G. W. Finley
Mrs. G. W. Finley
Homer Gammill
John Gaul
Ralph Harmer
Pauline Kitts
Catherine Lauer
Afton Lawson
Donald MacKay
Lucy McLane
Elizabeth Mason
James Mowe
Evelyn Newman
Anna Olin
Robert Pooley

Harold Randall
Opel Steffens
Hildred Struck
C. G. Swanson
Margaret Taylor
France Tobey
Christine Vaughan
Albert Watson
Mrs. Albert Watson
Martin Weitz
Elizabeth Wilson
Wilford Woody

Gamma—Western State College

Caroline Mattingly
Girty Masters
Cynthia Buck
Letha Brooks
George F. Berg
Gwen T. Coffin
Rolland Smethurst
Fred D. Stull

ILLINOIS

Alpha—Illinois Wesleyan University

Wayne A. R. Leys
Leslie Nimmo

Beta—Eureka College

Maxwell Corey
Willard E. Shelton
Durward Sandifer

Gamma—Carthage College

George B. Arbaugh
B. A. Roeth

Delta—Bradley Polytechnic Institute

Walter Baer
James Costello
Louis R. McDonald
F. S. Siebert

Iota—Northwestern

Paul H. Eller
John D. Stafford
Wilmert H. Wolf

Kappa—Lombard College

Clyde H. Layton

INDIANA

Alpha—Franklin College

K. Eugene Kenny
George E. Utterback

IOWA

Alpha—Iowa Wesleyan University

Paul Minear

Beta—Central College

Louis Benes Jr.
Cornelius Wilkins

Gamma—Des Moines University

Penelope Webster
Dorothy Jastrom
Dr. Howland Hanson
Burkett C. Herrick
Kenneth Morgan
Milton Thompson

Delta—Morningside College

Lois Hickman
Mrs. Jane Smith
Lois Jack
Henrietta Squires
Mildred Hickman
Gordon Fogg
Gordon R. Larson
Harold Larson
Henry J. Te Paske

Epsilon—Simpson College

Dwight L. Cart
Edith B. Whitaker
Edna Ledlie
Doris Hatch
Roderick A. Chisholm
Horton Tolley

Zeta—Parsons College

Robert L. Bartlett
Susan Fulton
Wayne C. Neely

Eta—Upper Iowa University

Gladys McElroy
Harriet Barrett
Mildred Wilkins
Edith Frieden
Karleton W. Crain
Clifford Headington
John H. Lyford
Robert M. Smith

Iota—Western Union College

Alfred H. Skogsberg
Roy M. Smith
Golden O. Thompson
Harry O. Thompson

Kappa—Buena Vista

Mrs. Dewey Ambler
L. Dorothy Green
R. Maxine Ross

Lambda—University of Dubuque

Wesley Roeder
Harry Short
Dale D. Welch

KANSAS

Alpha—Ottawa University

V. P. Crenshaw
R. H. Ritchie
John Shank

Beta—Washburn College

Stanley Garrity
Rodney Stone

Gamma—Kansas State Agricultural College

Mrs. H. B. Summers
Mary Maxine Kimball
Barbara Firebaugh
R. E. Hedberg
Frank Morrison
H. B. Summers
Emil Sunley

Delta—Southwestern

J. Thompson Baker
Leroy Allen
Florena Clark
Edith Stewart
Lucile Wright
Roy Baker
R. A. Brooks
H. C. Case
Don Kitch

Epsilon—Fairmount College

Archie N. Booth
Mildred Clark
Willie Madge Bryant
Zora Anderson
Bentley Barnabas
George Sawallesh
George Wilner

Zeta—Kansas State Teachers' College of Emporia

R. B. Alcott
Paul Moreland
George R. Pflaum
Sarah Loomis
Lucile Spencer

Eta—Kansas Wesleyan University

Orville Holtz
Joseph T. Owens

Theta—Kansas State Teachers' College of Pittsburg

J. Pelsma
Alice Floyd
Sibyl Gray
Beulah Shinkle
Iris Cheverton
Winifred Burkett
Garvey Bowers
John A. Bowers
Kenneth Hamer
Joseph Skubitz
Tom Kelly

Iota—College of Emporia

John M. Brewster
Orlo Choguill
J. H. Lawrence

Kappa—Baker University

A. E. Leach

Lambda—Sterling College

Alice Manuel
John W. Campbell
Pres. R. T. Campbell
T. G. Gaston
Kenneth W. Porter

Mu—Bethany College

Mabel Krehliel
Lucille C. Kaul
Elsa Johnson
Opal Miller
Martin J. Holcomb
Cecil B. Lamb
Lloyd Malm
Arthur Rystell
Merle Yowell

Nu—Kansas State Teachers' College Hays

Hugh Burnett
Allen E. Ecord
James R. Start
J. Toon Trebra
Grace Gregory
Nessie Coles
Mrs. James R. Start

KENTUCKY

Delta—Transylvania

Amelia Anna Lange

LOUISIANA

Alpha—Louisiana College

F. K. Horton

Beta—Centenary

Bentley Sloane

MICHIGAN

Alpha—Kalamazoo College

Ledlie A. DeBow
Edwin G. Gemrich
Gould Fox
James McLaughlin
Leroy Stinebower

Beta—Olivet College

Carl Nelson

Gamma—Hope College

Harriet Heneveld

Delta—Michigan State

Lee Miller

Epsilon—Michigan State Normal College

Willard Manis
Kirk Seaton
Wm. Underwood

MINNESOTA**Alpha—Macalester College**

Willard H. Robinson
Lillian Forns
Charlotte Anderson
Marion Dailey
Grace B. Whitridge
Richard Hoiland

Beta—St. Olaf

Rufus Logan
Prof. J. D. Menchofer
Paul G. Peterson
Roy Reiersen

Gamma—Gustavus Adolphus

Roy A. Hendrickson
Gilbert T. Monson

Delta—Hamline University

Clarence A. Rolloff
Charles S. Templer

Epsilon—St. Thomas

Daniel Lane
Lloyd Keogan
David McLaughlin

MISSOURI**Alpha—Westminster College**

Raymond Krogge
Kenneth Lineberry
J. B. Reeves

Beta—Park College

K. W. Given
Gertrude Graham
John M. Moore

Gamma—Central College

Herbert M. Penick
Charles Reed
W. Wimmell

Delta—William Jewell College

Hilary Bush
P. Casper Harvey
Albert Howard
Harold Roberts

Epsilon—Missouri Wesleyan

Paul K. Crawford
B. W. Folsom
Wilbur E. Moore
Charles Taylor

Zeta—Culver Stockton College

Charles Bilderback
Clark Cox
L. J. Graham
Mildred McGee

MONTANA**Beta—Montana State College**

Raymond W. Beatty
Edward C. Fuller

NEBRASKA**Alpha—Nebraska Wesleyan University**

Enid Miller
Alice Maynard
Hazel Mason
Frances Goodhue
Aubrey Carrell
John Casteel
Howard W. Hamilton

Beta—Cotner College

Edwin Hogle
Clifton Wagner
Elwyn Wherry

Gamma—Doane College

Leroy Laase

Delta—Hastings College

Lyle W. Ashley

Epsilon—Grand Island College

Robert McWilliams
Paul Newell

Zeta—Kearney State Normal

Margaret Yoder

NORTH CAROLINA**Alpha—State College**

W. E. Wilson

NORTH DAKOTA**Alpha—Jamestown College**

Vinton Burt
Bernard Gustafson
Robert Kroetze
Wm. McPherson

OHIO**Alpha—Baldwin-Wallace**

Dana T. Burns
Carl D. England

Beta—Heidelberg

Ralph M. Besse
Ben Herbster
H. D. Hopkins

Delta—University of Akron

Frederic J. Eastman

Epsilon—Otterbein

Robert Knight

Zeta—Marietta

Wayne Dennis

OKLAHOMA**Alpha—Oklahoma A. & M. College**

Harry H. Anderson
Claud L. Fly
James L. Williams

Beta—University of Tulsa

Emma Kenward
Beth Hackendorf
Geneva Roberts

Gamma—Oklahoma Baptist University

Walter Emery
C. W. Patton
N. W. Sawyer

Delta—Northwest State Teachers' College of Alva

John J. France
E. B. Hardy
D. C. Mosshart

Epsilon—Oklahoma City University

Gilbert Garretson
Emanuel Holmberg
Roy W. Jones
Farron E. Turner
Everett H. Welborn

Zeta—Oklahoma College for Women

Elizabeth Cox
Mona Smith

Theo. W. Schultz

H. R. Smith

Epsilon—Sioux Falls College

J. D. Coon
Paul A. Krueger

Zeta—North State Teachers' College of Aberdeen

William Gruhn
A. R. Root
Bery L. Simmons
Beryl DeHaven
Kathleen Brady

Eta—Augustana College

Hugo A. Carlson
Marcus Houge
Carmi Lawrence
Alvin N. Rogness

TENNESSEE

Beta—Tusculum College

Mary Ella Smith
Mary E. Wilson

TEXAS

Alpha—Southwestern University

W. Dwight Wentz

Gamma—East Texas State Normal College

J. D. Alexander

Delta—Howard Payne College

T. R. Havins
Catherine Padwick
O. E. Winebrenner
J. E. Zimmerman

Epsilon—Baylor College

W. H. Vann
Martha Hardy
Cora Whitley

WASHINGTON

Alpha—College of Puget Sound

Mildred M. Hawksworth

WISCONSIN

Alpha—Ripon College

H. P. Boody
Theodore Brameld
Henry Christoffersen
John H. Dillon

Beta—Carroll College

Donald Lomas

GENERAL CHAPTER

David Evans, Kansas City (Missouri) Junior College.

Dudley W. Houtz, Kansas City (Missouri) Junior College.

OREGON

Alpha—Linfield

Carmelita Woodworth

PENNSYLVANIA

Alpha—Grove City College

Raymond D. Walter

SOUTH CAROLINA

Alpha—Wofford College

F. S. James
Harold M. Patrick

SOUTH DAKOTA

Alpha—Dakota Wesleyan University

Lois Crouch
Irene Frahm
James W. Bellamy
F. W. Lambertson
Donald H. Root
Owen C. Wicks

Beta—Huron College

Catherine McCune
W. B. Garrett
Lester Thonssen

Gamma—Yankton College

Boyd Aldrich
C. Gilkinson
H. Gilkinson
John Sattler

Delta—South Dakota State College

Archie Higdon
George McCarty
Elmer B. Mortensen

VISITORS

Roy Chamberlain, Nebraska State Teachers of Peru	Arthur Secord, Western State Normal of Kalamazoo, Mich.
Albert Becker, Western State Normal of Kalamazoo, Mich.	Nelson J. Young, Western State Normal of Kalamazoo, Mich.
E. J. Jennings, Western State Normal of Kalamazoo, Mich.	Pres. H. F. Marlin, Midland College, Nebraska
C. P. Lahman, Western State Normal of Kalamazoo, Mich.	Don C. Lewis, University of Utah

Totals:

Chapters represented	98
Other colleges	4
Delegates	400
Visitors	8

There were many other visitors, including Professor Harold Davidson and six debaters from Englewood, Colorado. Englewood has long held the state high school championship.

PI KAPPA DELTA DEBATE VOLUME

For some time $\Pi K \Delta$ has been considering the proposition of publishing an annual volume of debates. An attempt to do this was made in 1924. This year, however, we have the material and are prepared to go ahead.

The first of what we hope will be an annual series will be published about June 1. It will contain final debates in the men's and women's tournaments of the national convention, the three winning orations from both the men's and women's contests, and the three winning extempore speeches from the men's and women's contests. The pictures of the speakers will be included in so far as we have been able to collect them.

The volume will be gotten up for permanent form. It will sell for around fifty cents. Only a limited number will be printed. Every one who wishes one should send his order to the national secretary at once. Each chapter should ask its library to be sure to secure a copy. If a series are printed during the years to come, each chapter and each $\Pi K \Delta$ college will want to have the series complete. Cash should accompany the order. If the price does not happen to be exactly fifty cents, an adjustment can be made later.

OKLAHOMA ZETA, CHAPTER 115

Oklahoma is not yet nineteen years old. Her first legislature passed Senate Bill 249, creating the Industrial Institute and College for Girls, to be located at Chickasha, and Governor Haskell signed the bill on May 16th, 1903. By a special act of the legislature in 1916, the name was changed to the Oklahoma College for Women, and is now known familiarly as "O. C. W."

The early sessions of the school were conducted in the high school building and one of the churches. In 1911 the first college building was completed, the administration building, and in the fall of that year its use commenced. Since then two large dormitories, with room for nearly four hundred students, a fine arts building, home economics building, heating plant and president's residence have been added. The college auditorium has become too small for its needs, and a fifty thousand dollar addition is now being completed. Thus far in its brief history the state has put about a million dollars into the buildings and equipment of the school, and more than a million dollars into support and maintenance. For its size it is probably the best equipped educational institution, public or private in the state.

The original campus (to which some land has since been added) belonged to the estate of a girl of part Indian blood, and was given for the college purposes by her father after her death. The first dormitory, Nellie Sparks Hall, is named for her. The other dormitory bears the name of the great leader in the temperance movement, Frances Willard.

The early years of the school included a period of somewhat irregular growth, developing into a college high school and regular collegiate department, with the high school having much the larger enrollment. This proportion rapidly changed until last year only a small fourth year class of the high school remained, and this year all enrolled have been regular college students, the total number reaching 725. The first degrees were conferred by the college in 1915, at the close of the first year's administration of the present president, G. W. Austin. In the ten years since then more than 180 bachelors' degrees have been granted. President Austin, an old war horse in education, has a droll, effective way of speaking in public and private, which brings results which are envied by heads of other state institutions. A member of the last state legislature, who thought that Mr. Austin was getting more than his share, growled in a committee meeting that if Mr. Austin asked the legislature to pick up the state capitol and move it to the other end of the city, he had no doubt it would do it. The college is a member of the North Central Association and has on its faculty about fifty men and women with degrees from some of the greatest educational institutions from New York to California, and Europe too.

In the fall of 1920 a debate club was organized in the college with Miss Benson Botts, professor of sociology, as sponsor. From this club a team of three was selected which in a famous debate in the home college in Chickasha, defeated a team from the University of Oklahoma. The members of this first intercollegiate debating team were Miss Claribel Buford, Miss Hallie Grimsley and Miss Willa K. Davis. Miss Buford has further increased her fame in these lines since then and is now one of the instructors in public



OKLAHOMA ZETA, (OKLAHOMA COLLEGE FOR WOMEN)

BACK Row, Left to right: Madalene Slaten, Carma Russell, Claribel Buford, E. Albert Cook (coach), Nadine Chase, Mona Smith, Elizabeth Cox
 FRONT Row, Left to right: Helen Muller, Glynn Gardner, Evelyn Sanders, Margaret Zachary.

speaking in the college. The second year, Miss Buford, Miss Carma Russell and Miss Harryette Sanford formed the college team which won debates with Oklahoma A. and M. College, Oklahoma Baptist University and Kingfisher College, losing a decision in the debate with the State Teachers College at Durant. The three members of this team have since become members of the general chapter of $\Pi K \Delta$ and two of them are on the charter membership list of Oklahoma Zeta.

After Miss Botts left the college, there was a lull in the debating activity of the college for a year, but in 1923 the Debating Club was reorganized and it developed teams and arranged debates with several colleges of the state and one large girls' college, the famous "C. I. A." of Denton, Texas. Last year's season was the most successful thus far. It included an open forum debate with Oklahoma A. and M. College, (with no official decision) and regular three-judge-decision debates with Oklahoma City University, Phillips University and University of Tulsa, of Oklahoma, and the College of Industrial Arts of Denton, Texas, all of which were won by the O. C. W. teams.

This year's schedule is still more ambitious, including a "split-team" debate with A. and M. College, and regular debates with Phillips, Tulsa, Oklahoma City, and the Northeastern State Teachers' College in Tahlequah, within the state borders, and with "C. I. A." in Denton, and Baylor College for

Women, in Belton, Texas. Baylor preceded O. C. W. by just a few weeks in being admitted to I K A.

The original Debating Club has passed through various vicissitudes. In the fall of 1924 its name was changed to Alpha Kappa Gamma, the Greek initials of the words "Aletheia kai Gnosis" meaning "Love and Knowledge." The intercollegiate debating is now directed by the Debate Coach, Dr. Cook, professor of sociology, and the intensive preparation for the debates with other schools is made in the debate squad which meets for an hour every week. Alpha Kappa Gamma, however, is of great value in keeping up interest in debating, usually alternating a debate program with a literary program week by week. It has just decided to commence the development of extemporaneous speaking among its members and may also try oratory, although girls are usually not so ambitious in that line as boys.

Oklahoma Zeta chapter expects to have two representatives at the national convention this year. Elizabeth Cox has had some successful experience in high school debating, but commences her college debating in contest with the large Texas schools above mentioned, this year. Mona Smith her partner, had a remarkably successful high school debate experience, and has not yet been defeated in intercollegiate debating.

The fact that the college auditorium is being enlarged, has prevented the usual chapel gatherings this year, and has been a serious handicap in various ways to student activities. With the new auditorium and the new enthusiasm which it is expected our representatives will bring back from Greeley and Estes Park, conditions are favorable for a great advance in forensics in O. C. W.

The charter members of Oklahoma Zeta chapter are: Claribel Buford, Carma Russell, Glynn Gardner, Nadine Chase, Mona Smith, Helen Muller, Evelyn Sanders, Madalene Slaten, Margaret Zachary, and the coach, Prof. E. Albert Cook.

FILE THE NAMES OF YOUR NEW OFFICERS WITH THE NATIONAL SECRETARY

Many chapters are electing new officers this spring. They should be sure to send to the national secretary the names and addresses of these new officers so that the national organization may be able at all times to keep in touch with each chapter. If there is a change in address, if the old officers graduate and leave college, there is no way the national secretary can know of this unless the chapters themselves send him word. Important mail is being sent out constantly. The place for the next national convention, the questions suggested for next year's debates, and the final selection of the official question itself, are among the items which will be sent to your chapter thru the mail either this spring or early next fall. You do not want your chapter to fail to receive this information.

THE LOUISIANA BETA CHAPTER

In 1825, Louisiana founded a state college at Jackson; this was the College of Louisiana. In 1839 the Methodists of America celebrated the hundredth anniversary of the founding of Methodism by raising a sum of money for religious education. The Church founded a college at Brandon, Mississippi, and called it Centenary College. In 1845 the State of Louisiana sold the College of Louisiana by an act of the legislature to Judge McGhee and others, who turned the property over to the Methodist Conference—Louisiana and Mississippi were under one conference at that time. The Conference moved Centenary College from Brandon, Mississippi, to the property at Jackson, Louisiana. A charter was granted the trustees of Centenary College of Louisiana to confer the regular collegiate degrees.

In 1854 began a brilliant career for the college. Beautiful buildings were erected at great cost for the time. The college was known all over the Old South. Jefferson Davis was a student there, as was Judah P. Benjamin, Secretary of State of the Confederacy. During the Civil War period, Centenary went through hard times, but carried on until 1908 at Jackson. Then the college was moved to Shreveport where it has had great success and has ministered to the educational needs of a large and growing community. Dr. Sexton has been president since 1919. Under his able leadership, the college has acquired a faculty unsurpassed in the South, is prosecuting a vigorous campaign for increased endowment and should have large success in the future.

Centenary College of Louisiana, now located at Shreveport, has just completed a century of service to the State and to the Nation. The college began its work in 1825. The college has had among its students during the past century many, many men who have made public records in the art of speech.

The college in recent years has always done creditably in public speaking, both at home and abroad. It has taken more than its share of the honors in the State Peace Contest, which is open to boys only, and likewise in the State Girls' Forensic Contest.

Intercollegiate debating began last college year. In the student body was an ambitious young man by the name of Robert M. Bozeman, gifted in the art of public speaking; he was ambitious to try his debating powers in extra curricular and in extra mural contests. So he established a reputation in the college by "showing" up all opponents in the literary societies; it became the duty of the faculty to arrange an outside debating schedule.

The first debate resulted in a triumph for Robert Bozeman and Bentley Sloane over a strong team from Hendrix College of Conway, Arkansas. The contest was held in Shreveport and Centenary won by a two to one decision. The second debate was another triumph for