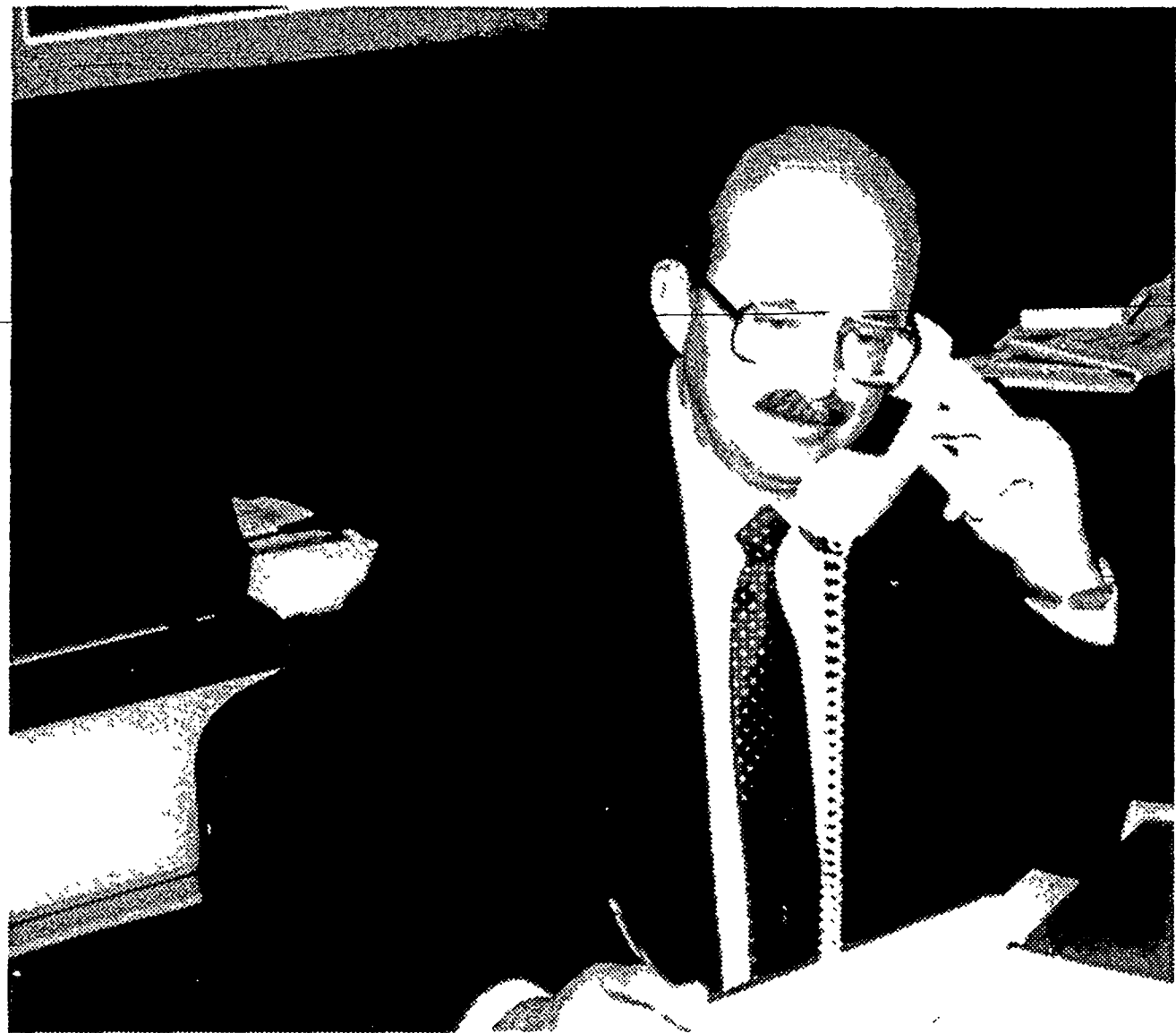


The Ottawa University Phoenix Center

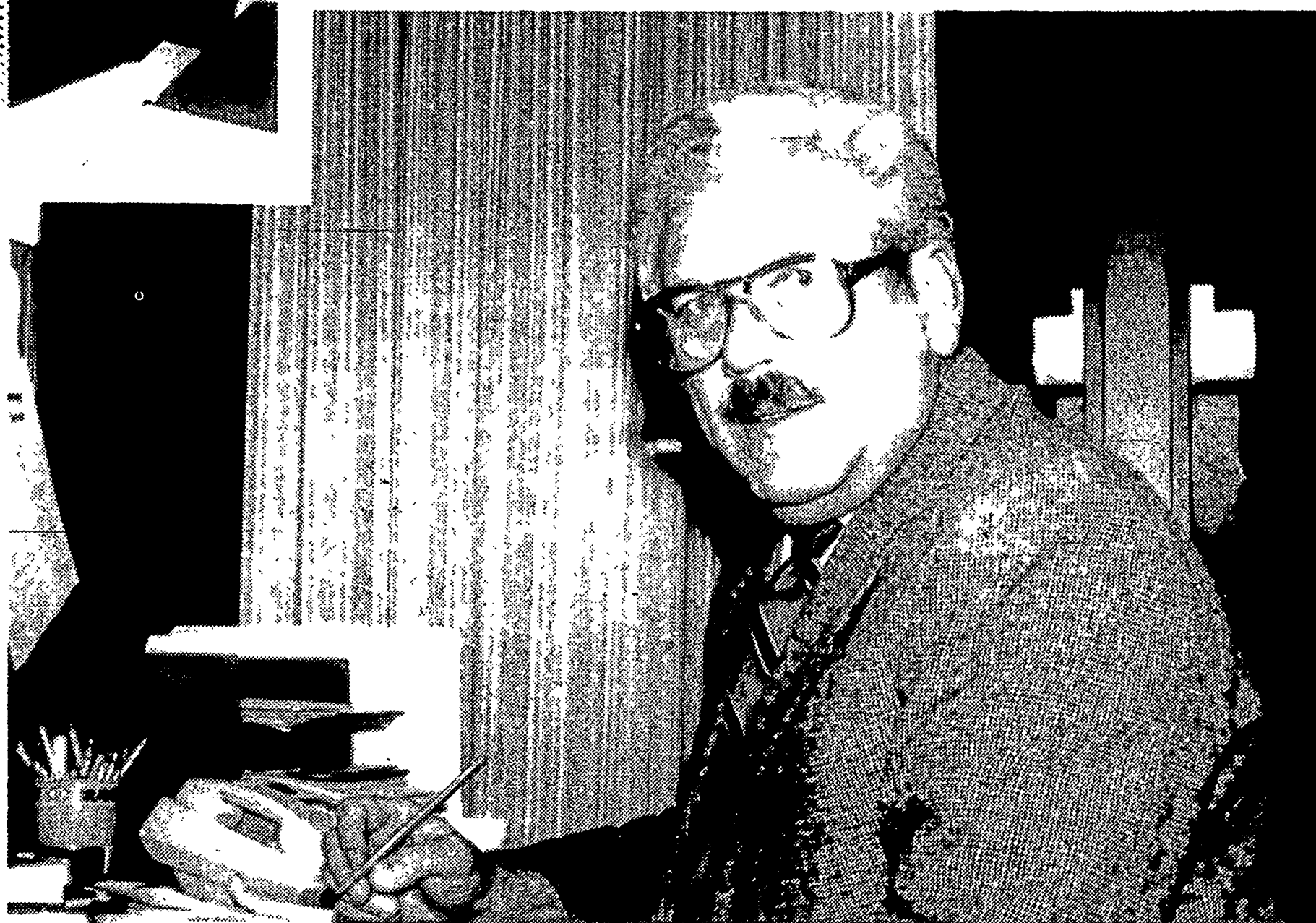


Dean Fred Zook

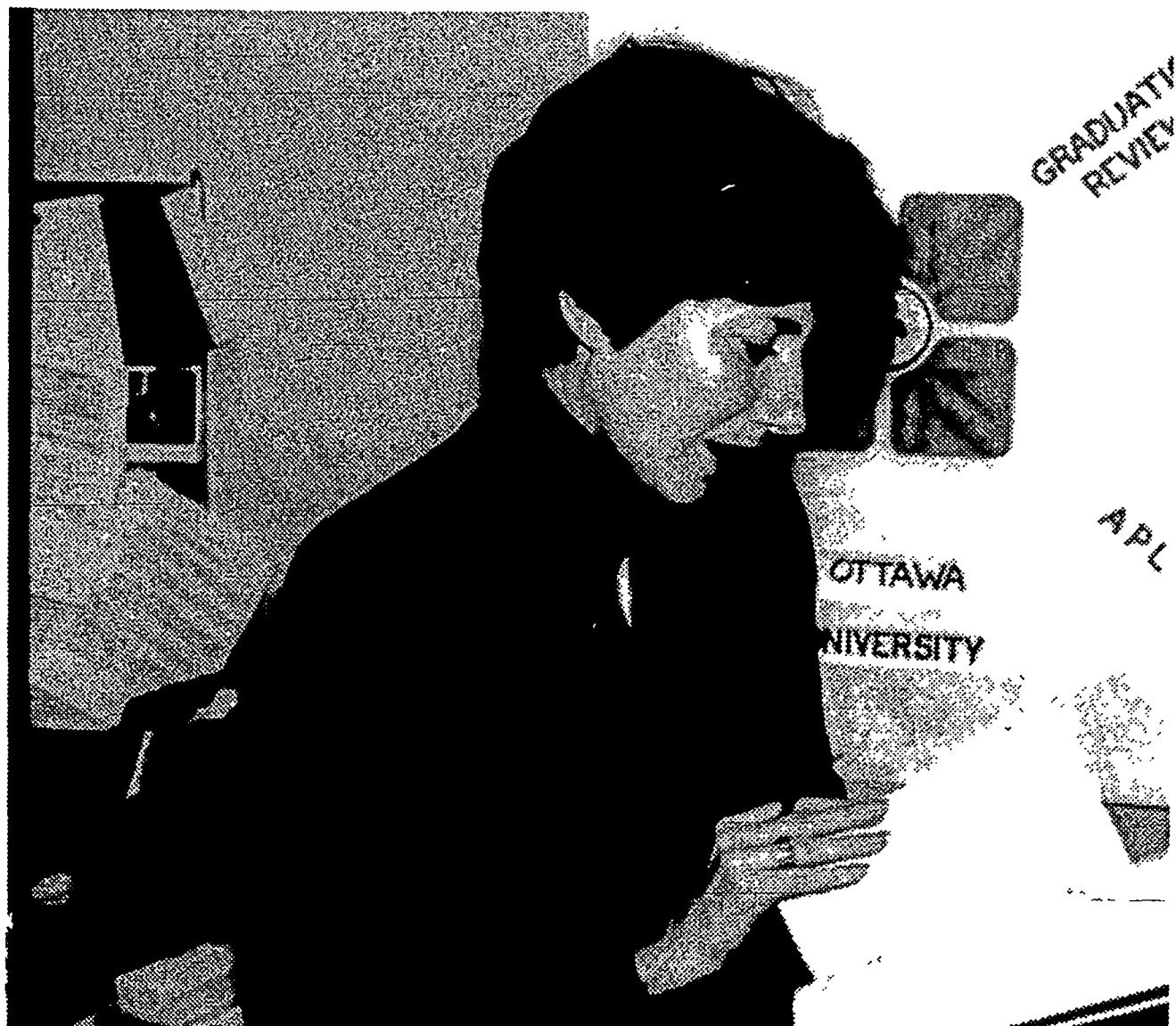
Ottawa University established the Phoenix Center in 1977 to respond to the educational needs of the adult population of the Phoenix area. The keystone of the Center's educational process is "student-centered" learning. Students may work independently and progress at their own speed. Since each student's program of study is individually designed and is a combination of prior learning accomplished inside and outside the classroom with courses taken at the Center, the advising relationship between students and faculty advisors is an integral part of the program.

Enrollment in the Center's degree completion program has steadily increased with over 200 students attending classes during the past academic year. A total of 181 students have graduated from the program.

Associate Dean Cal Milan

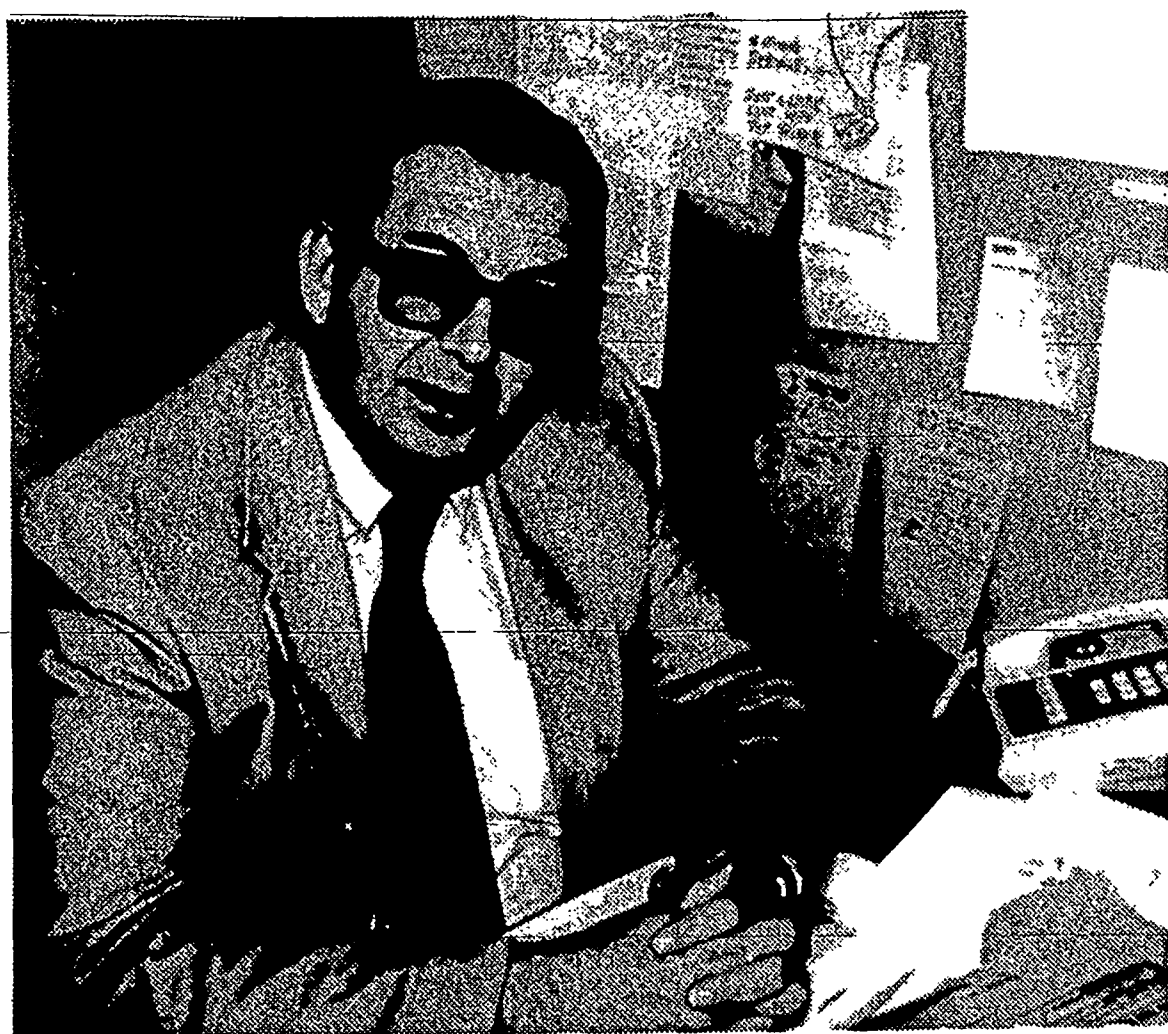


Dr. Maxine Rossman



Business administration, psychology, health care and administration, and selected disciplines within the liberal arts have been the most popular areas of specialization for the Center's students. Graduates of the Center have been accepted for advanced studies in a number of universities including the University of Oklahoma, Western Illinois, Oklahoma State University, Claremont Graduate School of Management, Arizona State University, University of Phoenix, Northern Arizona University, University of Iowa, California State University - Dominguez Hills, and Sonoma State University.

The average age of the Center student is 40; many students have jobs and family responsibilities that make the traditional degree program impractical if not impossible. A feature of the Phoenix Center is the flexibility in class scheduling. When appropriate, scheduled classes and directed studies are part of a learner's program. Both classroom formats have the



Dan Foxx, Jr.

Noreen Roland



same educational goals. The plan for completion of a degree is one which makes it possible for the adult to obtain a high quality education in the context of liberal arts, while at the same time carrying out a normal routine of non-college life.

One of the most important ingredients of a successful educational program is the faculty and staff. The Phoenix Center has an excellent and dedicated group of people.

Cal Milan, Associate Dean (1980), Dr. Maxine Rossman (1979), Noreen Roland (1984), and Dan Foxx (1982), bring years of experience in teaching adults. Faculty load at the Center includes teaching, advising, public relations activities, recruiting, interviewing adjunct faculty, etc. The Dean, Fred Zook (1967),

moved to Phoenix in 1978 after 11 years of service to the residential campus.

Instruction in degree completion courses outside the core courses (taught by regular faculty) is largely carried on by adjunct faculty. Adjunct faculty are sought who: (1) have superior educational background; doctorate preferred, (2) demonstrate professional competence in subject area to be taught, (3) have the desire and ability to teach well and to relate creatively to adult learners and (4) are willing to be flexible in meeting adult student academic and schedule needs.

Consistent with its long history of excellent teacher preparation programs, Ottawa University offers a series of courses through the Professional Education Program (PEP) designed with the educator in mind. The University places great importance on the ability



of educators to cope with the rapidly changing worlds of students, schools and society. The primary purpose of the program is to offer educators pertinent and usable material that will make them more effective facilitators of learning.

The Phoenix Center is located at 1777 West Camelback Road, Suite K-106. This location is near the geographic center of the city. This particular site is advantageous because it is only one mile east of Interstate 17 and there is ample parking around the building. The University leases 2700 square feet in this one story structure that is owned by the State of Arizona. The Center has 3 classrooms, 1 seminar/resource room, 1 storage/work room, faculty/staff offices, and a reception area. ■