

THE FORENSIC

OF PI KAPPA DELTA

Issued four times a year, in October, January, March and May.

Subscription price per year, \$1.00. Subscription free to all active members.

Entered as second class matter, October, 1928, at the post office at Fort Collins, Colorado, under act of August 24, 1912.

SERIES 19

MARCH, 1934

NUMBER 3

Tentative Program for Tenth Biennial Convention of Pi Kappa Delta

Lexington, Kentucky, April 2-6, 1934

Hotel Lafayette, Convention Headquarters

Monday, April 2

- 8:15 a. m. First roll call. General assembly.
- 9:15 a. m. First round of men's and women's debates.
- 10:30 a. m. Second round of men's and women's debates.
- 12:00 noon. Luncheon.
- 12:30 p. m. Meeting, National Council.
- 1:30 p. m. Drawing of topics for first round of men's and women's extemporaneous speech contest. Extemporaneous speech headquarters.
- 2:45 p. m. First round of men's and women's extemp. speech.
- 4:00 p. m. Third round of men's and women's debates.
- 6:00 p. m. Pi Kappa Delta dinner. Lafayette hotel.
- 8:15 p. m. First round of men's and women's oratory.

Tuesday, April 3

- 8:15 a. m. Fourth round of men's and women's debate.
- 9:15 a. m. Second roll call. First business session; committee reports.
- 12:00 noon. Luncheon. Council and committee meetings.
- 1:30 p. m. Second round of men's and women's oratory.

- 3:30 p. m. Fifth round of men's and women's debates.
- 6:00 p. m. Pi Kappa Delta dinner. Lafayette hotel.
- 7:15 p. m. Drawing of topics for second round of men's and women's extemporaneous speech. Extemporaneous speech headquarters.
- 8:15 p. m. Second round of men's and women's extemporaneous speech contest.

Wednesday, April 4

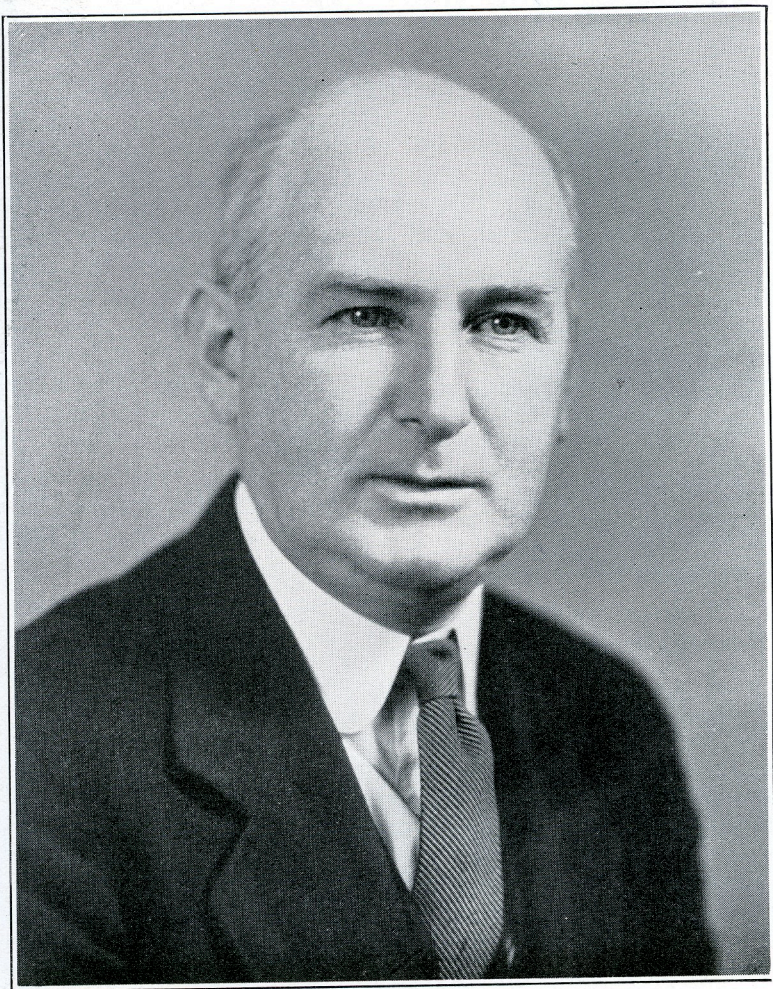
- 8:15 a. m. Sixth round of men's and women's debates.
- 10:00 a. m. Demonstration debate. Redlands and North Carolina State.
- 11:00 a. m. Provincial meetings and luncheons.
- 12:00 noon. Luncheon.
- 12:30 p. m. Council meeting.
- 1:30 p. m. Seventh round of mens' and women's debates.
- 2:30 p. m. Drawings for third round extempore contests.
- 3:30 p. m. Third round extempore contests.
- 4:30 p. m. Third round of men's and women's oratory.
- 6:00 p. m. Pi Kappa Delta dinner. Lafayette hotel.
- 7:00 p. m. Faculty and Student conferences.
- 8:30 p. m. Social evening. Transylvania College.

Thursday, April 5

- 8:15 a. m. Eighth round of men's and women's debates (semi-finals for women).
- 9:30 a. m. Third roll call and business session.
- 11:00 a. m. Semi-finals, men's debate.
- 12:00 noon. Luncheon.
- 1:00 p. m. Sightseeing trip.
- 6:00 p. m. Pi Kappa Delta dinner. Lafayette hotel.
- 7:30 p. m. Finals in women's debate.
- 9:00 p. m. Finals in men's debate.

Friday, April 6

- 8:15 a. m. Drawings of extempore topics for men's and women's semi-finals.
- 9:15 a. m. Semi finals men's and women's extemp.
- 10:00 a. m. Semi-finals men's and women's oratory.
- 12:30 p. m. Drawing of topics men's and women's extemp. finals
- 1:30 p. m. Finals men's and women's extemp.
- Finals men's and women's oratory.
- 3:00 p. m. Final roll call and business session.
- 6:30 p. m. Pi Kappa Delta banquet, Hotel Lafayette.



OUR NATIONAL PRESIDENT

Every one who attends the convention at Lexington will look forward to meeting National President H. Dana Hopkins, Heidelberg College, Ohio Beta. The success of this convention has been on "Hoppy's" mind ever since he left Tulsa two years ago. If you don't take the opportunity to meet him personally and to chat with him, you will miss one of the pleasant features of the convention. He likes people, and incidentally people like him.

Transylvania College Welcomes P. K. D.



PRES. ARTHUR BRADEN
Transylvania College

Pi Kappa Delta is meeting in Lexington, Kentucky, the first capital of the first state carved out of the "region of the western waters," as it was called in colonial days. We are happy to welcome you as guests at Transylvania College, the oldest chartered institution west of the Alleghany mountains. We hope that you will meet here competitors worthy of your best forensic efforts, and that in all ways you will enjoy heartily your sojourn at Transylvania.

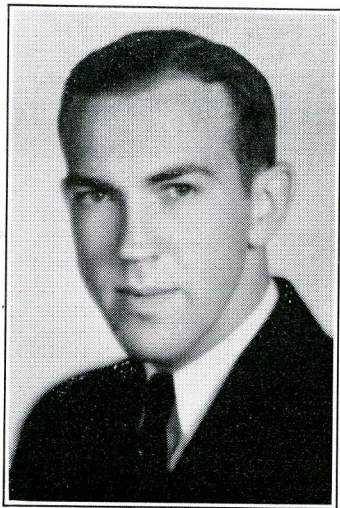
ARTHUR BRADEN,
President.

Kentucky Delta chapter considers it a distinct privilege to welcome to Lexington and the Transylvania College the representatives of the 148 chapters of Pi Kappa Delta.

We are looking forward with keen anticipation to meeting you and knowing you personally. The resources of the chapter, the school and the civic organization of Lexington have been placed at our disposal to make the 1934 convention a milepost in Pi Kappa Delta history.

You are going to enjoy your stay in Lexington, and we are going to enjoy having you.

RALPH H. SAUNDERS,
Pres. of Delta Chapter.



RALPH H. SAUNDERS

Preliminary Report on Convention Attendance

The following tentative report attempts to show what to expect at Lexington. It is made up from reports on hand in the Secretary's office March 5. Since entries do not close until March 12, it is necessarily incomplete. It is made up from all available sources, answers to the questionnaire of February 2, entry blanks already received, and personal letters. Of course many colleges not listed here will be at the convention. These preliminary figures indicate that the attendance at the Lexington convention will probably exceed that at Tulsa.

As some people are entered in both debate and oratory, or debate and extempore, and as there may be two or three people on a debate team, the cross total is not always what the reader might expect at first.

	Debate Teams		Orators		Extemp.		Coach or Fac.	Tot.
	M	W	M	W	M	W		
Henderson Teachers -----	1						1	3
College of Ozarks -----	1	1	1	1	1	1	1	5
Redlands University -----	1	1	1	1	1	1	2	10
California Inst. of Tech. -----	1		1		1			4
College of Pacific -----		1					1	3
U. C. L. A. -----	1	1	1	1	1	1	1	5
Colorado Aggies -----	1	1	1	1		1	2	6
Colorado Teachers -----	1	1	1	1	1	1	2	8
Western State College -----	1	1			1	1	1	5
Conn. State College -----			1					1
Illinois Wesleyan -----	1		1		1		1	6
Monmouth College -----		1		1	1		2	7
McKendree College -----			1	1				2
Shurtleff College -----	1							3
Wheaton College -----			1	1			1	3
Macomb -----	1		1		1		1	6
Central, Iowa -----	1	1	1	1	1	1	1	6
Morningside -----	1	1	1		1		1	5
Simpson -----	1	1	1	1	1	1	2	10
Parsons -----	1		1		1		1	4
Dubuque -----	1					1		5
Drake -----	1	1				1		5

	Debate Teams		Orators		Extemp.		Coach or Fac	Tot.
	M	W	M	W	M	W		
William Penn -----			1	1			1	3
Franklin -----			1	1			1	3
Ottawa -----	1	1					1	5
Kansas State -----			1				1	2
Southwestern -----	1	1	1	1	1	1	1	7
Wichita -----	1	1	1	1	1	1	2	8
Emporia Teachers -----	1	1	1		1	1	1	7
Kansas Wesleyan -----	1	1					1	5
Pittsburg Teachers -----	1		1		1		1	5
College of Emporia -----	1	1					1	5
Baker -----	1		1		1			3
Sterling -----	1	1		1	1	1	1	9
Bethany -----	1	1	1	1	1	1	1	5
Georgetown -----	1	1	1		1	1	1	6
Louisiana -----			1					1
Southwest Louisiana Institute -----	1						1	3
Olivet -----			1				1	2
Michigan State -----	1	1	1	1	1	1	2	8
St. Olaf -----	1	1	1		1	1	1	6
Hamline -----		1		1		1	1	4
Millsaps -----	1		1	1	1	1	1	4
St. Thomas -----	1		1		1		1	5
Westminnster -----	1		1		1		2	6
Park -----	1	1	1			1	2	7
Central (Missouri) -----	1	1	1			1		7
William Jewell -----	1		1				1	5
Warrensburg Teachers -----			1	1	1	1	1	5
Cape Girardeau Teachers -----	1	1			1		1	7
Maryville Teachers (Missouri) -----	1				1		1	4
Intermountain Union -----	1	1	1	1	1	1	1	6
Nebraska Wesleyan -----	1	1	1	1			2	6
Hastings -----	1	1	1	1	1	1	1	7
Wake Forest -----			1				1	2
Kearney Teachers -----	1		1	1	1		1	4
North Carolina State -----	1		1		1		1	4
Asheville Teachers -----				1		1	1	3
Jamestown -----	1	1	1	1	1	1	2	8
Baldwin-Wallace -----	1		1		1		2	4
Heidelberg -----	1	1	1	1	1	1	1	5
Bowling Green Normal -----	1	1		1		1	1	8
Oklahoma A. & M. -----	1				1		1	3
Tulsa -----	1	1	1		1	1	1	5

	Debate Teams		Orators		Extemp.		Coach or Fac.	Tot.
	M	W	M	W	M	W		
Oklahoma College for Women -----			1				1	2
Ada Teachers -----	1	1					1	2
Linfield -----				1			1	2
Grove City -----			1					1
Dakota Wesleyan -----	1	1	1	1	1	1	1	6
Yankton -----			1		1		1	3
State (South Dakota) -----	1		1		1		1	4
Sioux Falls -----	1	1	1	1	1	1	2	7
Aberdeen Teachers -----			1	1			1	3
Augustana -----	1	1	1	1	1	1	1	10
Maryville (Tennessee) -----	1	1	1	1	1	1	2	12
Trinity -----	1	1	1		1		1	5
East Texas Teachers -----	1	1					1	3
Howard Payne -----	1	1		1	1	1	1	12
Baylor -----	1				1		1	4
Farmville Teachers -----				1				1
College of Puget Sound -----	1	1	1	1			1	6
Ripon -----			1				1	2
Oshkosh Teachers -----	1		1				1	4
West Virginia Wesleyan -----	1	1					1	5
General Chapter -----	1							2

Petitioning Colleges

Augustana -----	1	1	1	1	1	1	1	8
Concordia -----	1		1		1		1	5
Milligan -----	1	1	1	1	1	1	1	9
Missouri Valley -----	1						1	3
Lenoir Rhyne -----	1	1	1		1		1	5
Springfield (Missouri) -----	1		1				1	4
White Water Teachers -----			1					1
Shepherdstown (W. Virginia) -----	1		1				1	4
Totals -----	71	48	66	41	51	37	94	450
Tulsa figures -----	98	58	61	33	72	34		560



Debaters from Upper Iowa, the Eta chapter, have made several trips through the state, meeting a number of the other institutions in twenty-five debates. Debates for both men and women have been held with Simpson, Central, Penn, and John Fletcher.—*The Upper Iowa Collegian.*



PROF. GEORGE McCARTY IS FIRST VICE-PRESIDENT

Prof. George McCarty, South Dakota Delta, State College, our National First Vice-President, has been one of the wheel-horses of the society for almost half its life. He has attended conventions, worked on committees, edited *THE FORENSIC*, and served on the national council. Wherever a job comes up which requires hard work and good judgment, some one is likely to say, "Let George do it," and George usually does. As chairman of the charter committee he will be in direct charge of some of the most important work which will be done at the convention.

Affirmative Decisions 57%; *Negative 43%*

The following reports give some indication of the way decisions have been running in relation to the affirmative and negative sides of the Pi Kappa Delta question.

Redlands University Tournament

Round	Affirmative	Negative	Round	Affirmative	Negative
1	29	17	6	8	2
2	26	21	7	6	2
3	27	21	8	7	5
4	25	24	9	5	2
5	9	8	10	3	3

Total affirmative: 145, or 58%.

Total negative: 105, or 42%.

Record of votes by different groups shows:

Lawyers, ministers, etc.	55%	affirmative
Professors	54%	affirmative
Coaches	62%	affirmative
Graduate students with debate experience	59%	affirmative
Men (all groups together)	60%	affirmative
Women (all groups together)	51%	affirmative

Statistics gathered by the coaches in the University of South Dakota's Invitational Women's Debate Tournament show 16 affirmative wins against 9 negative decisions.

In the Rocky Mountain Speech Conference the affirmative won 10 and the negative 6 debates. From the Mid-South tournament, which was held in Arkansas, reports are available for the first day only. They show 44 affirmative and 41 negative decisions. This makes the total for all records available read:

Affirmative: 215, or 57%.

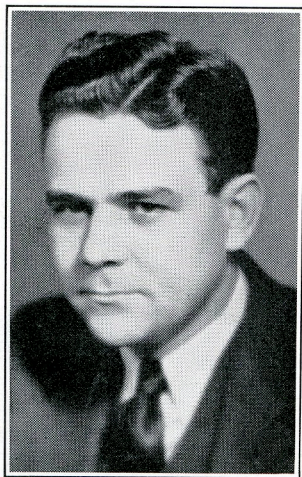
Negative: 161, or 43%.

The conclusion to be drawn from a record of 376 debates is that, other things being equal, the affirmative has almost a 3 to 2 advantage.

VICE-PRESIDENT EWING IN CHARGE OF CONVENTION CONTESTS

National Fourth Vice-President W. Prewitt Ewing, the congenial forensic coach from William Jewell, Missouri Delta, will be in charge of all convention tournaments. Prof. Ewing brings to his task a great deal of valuable experience gained at the Tulsa convention. He has been on the job for months organizing the machinery to handle the thousand and one details of the tournaments.

"I am not so sure that I want to be identified too easily by the five hundred coaches and students who will be at Lexington," he writes, "but I trust they will detect something of a pathetic expression in this picture that will solicit their sympathy and cooperation."



W. PREWITT EWING

"The members of my committee have worked hard to make these the smoothest running tournaments on record. They deserve all the cooperation which can be given them."

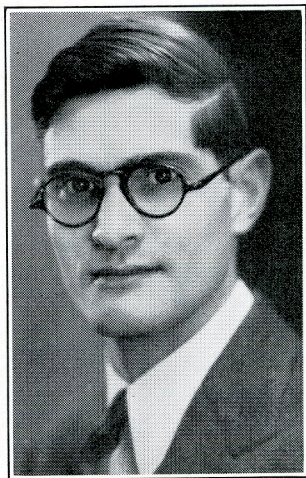
My Fellow Students and Coaches:

Wherever I have met Pi Kappa Delta schools this year they have said, "We *will* see you at Lexington." I venture the prediction, therefore, that the national tournament will be well attended—possibly better than was the Tulsa tournament two years ago.

"Why are they going?" This is the question I have asked myself. The answers—for there are several—may be found in facts. In the first place, intercollegiate forensic contestants are not the type of people to be halted by first obstacles. Where money is not immediately available, they devise some means to raise funds. (You, you college men and women, do not wait for opportunity. You make your opportunity.) Secondly, the national tournament is the meeting place of one of the most thoughtful intercollegiate representations in America. (You

THE CONVENTION CHAIRMAN

National Second Vice-President S. R. Toussaint, of Monmouth College, Illinois Zeta, is chairman of the convention committee. Most of his work will be completed when the convention starts. Ever since the Tulsa convention he has been helping to select a convention city, complete hotel arrangements, and prepare for the entertainment of the five hundred delegates who will suddenly descend upon him about the first of April. He has made a number of trips to Lexington and will be on hand to greet you when you step into the LaFayette.



S. R. TOUSSAINT

know that the true rewards for having attended the tournament against odds will accrue to you ten and twenty years hence.) The tournament is looked upon not simply as a great contest of wits; its significance as an intercollegiate conference is being more and more emphasized. Finally, no one will doubt its meaning as a vast social event. Thus, because Pi Kappa Delta naturally draws its membership from those students and teachers who are made of the best steel, because the national tournament is a great laboratory of self-discovery, because it is significant as a conference, and because it is social as well as academic, our charters are saying, "*We will see you at Lexington.*"

The city of Lexington itself is a magnet for all who love the graceful, the beautiful, and the historic. Seeing America *en route* is a fitting reward for those who train themselves to lead, to serve, and to follow intelligently.

Your committees on tournaments have worked hard and efficiently to make of this tournament a better, more smoothly running, more humane machine that you may be happier and better satisfied.

My one suggestion is: *We must have judges!* Will every coach make this his slogan: "*I will do my part?*"

We will see you at Lexington!

W. PREWITT EWING, Chairman,
Committee on Tournaments.
(Fourth Vice-President.)

Pacific Debaters Go To Jail

DAWNE ORTON

Director of Forensics

College of the Pacific

To put debaters behind prison walls may be the desire of some college roommates who have to put up with their "Mexican Athlete" bedfellows practicing speeches for the forensic season, but that is not the reason why College of the Pacific varsity debaters went to jail. California Alpha scheduled two debates last year and will have as many more this year inside prison walls, not because their debaters were behind the bars, but to hold them against opponents who could not come to Pacific, opponents who nevertheless could furnish as capable and sportsmanlike competition as any institution ever scheduled by Pacific.

College of San Quentin, as the debaters on either side jokingly refer to it, is headed by Dr. H. A. Shuder, Director of Education at the prison. Under his leadership 3000 men are enrolled in classes led by a staff of 100 instructors, research assistants, and administrators. Dr. Shuder is the only member of the entire staff that can go and come at his own pleasure.

The first contest left Pacific on the low end of a four-to-one score. One of the San Quentin men was a graduate of an institution of world distinction and an experienced political speaker. The other had served four years on the squad of one of the finest debating institutions of the west. One significant feature of this debate should be mentioned. Many of the Colleges of the West had practically dropped the moral issue from their discussions of the War Debts proposition. Consequently Pacific, represented by a son of a Methodist minister and a son of a Presbyterian Elder and coached by a former Congregational preacher went to San Quentin prepared on the negative to fight it out on the cold, hard, economic battleground. Imagine our surprise to find the team representing the state penitentiary drawing the clash of the debate over the moral issues involved in the situation. You, dear reader, may draw your own MORAL!

The second encounter came a few months later over a socialism-capitalism issue and this time Pacific had the good fortune to emerge on the long end of a five to nothing decision. The opponents in the second debate were a young man of slight de-

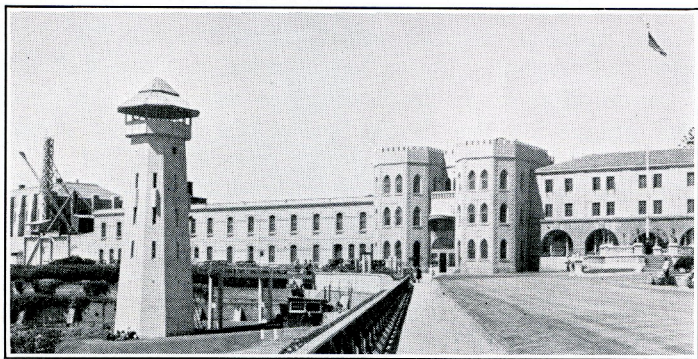
bating experience and the venerable politician of the first contest who had on that former occasion relieved our economic case of even the shadow of a moral victory.

To get into San Quentin, even to go "in one door and out another," one must crouch through the two-by-four-foot gate that separates the "outside" from the "inside." On the inside end of the tunnel that leads from the gate one gets a glimpse of a beautiful garden of the "yard." On his left is "condemned row" in one of the original Spanish cell blocks, but at the far end of the garden stands the modern and efficient looking Educational Building over which our genial and interesting host, Dr. Shuder, presides. The first time a Pacific team went "inside" the audience for the debate was filing into the auditorium which seats 300. Each man had his ticket and "Believe It Or Not"—"Strange As It Seems" 700 were turned away for lack of seating space ! ! ! ! !

The scene which meets one upon entering the Educational Building could easily be mistaken for the home office of a life insurance company—without its marble extravagances. The curriculum of the school is designed—unlike much in our traditional college curricula—to meet the needs of the personalities that come under its influence. Regardless of the language one speaks, the degree of preparation, the vocational experiences, the university degrees, the mental complexes, and the emotional sets that he may have, Dr. Shuder will find a place for him and a program of profitable study. We do not intend to suggest, dear reader that you may some day apply for entrance to San Quentin College, but if you do, you will be subjected to a battery of orientation courses and qualitative and quantitative tests that will furnish Dr. Shuder and his research assistants with as fine an opportunity to assist you as could be found in most American colleges and universities.

The range of the curriculum is from elementary grades to courses accredited by the state university through the extension service. Courses in the industrial skills are popular. In the drafting room you will find original creative work in progress. It is the pride of Dr. Shuder that the work is creative in all aspects. All of the instructional staff are men accomplished in their respective fields of content. California, Stanford, Ohio State, Columbia, Oxford, England, and many other institutions including the writer's Alma Mater have alumni on the faculty of this unique institution.

Languages, political science, economics, sociology, law, English composition and literature, life sciences, physical sciences, graphic art, engineering, and public speaking are departments



"THE COLLEGE OF SAN QUENTIN"

The California prison where the College of the Pacific debated

offering instruction. But Dr. Shuder takes particular pride in the work of the Public Speaking Department. He is a firm believer in Public Speaking as a means of developing creative mental habits, and debating plays a very significant part in the work in this field. It is because of this that the *Pacific Debaters Went To Jail*.

Jail may not be a good place to go, but Pacific has found it a good place to get real debate competition and enthusiastic audiences.



The Province of the Lakes is "polishing up for the big races at Lexington" by holding pre-Lexington debate tournaments at Heidelberg, March 9; Michigan State, March 17; and a women's tournament at Toledo, February 16-17.—*Dana T. Burns, Governor.*



"We are having the largest debate season this year in the history of the school, fifty-three debates, or twice as many as ever attempted before in a single season, and this on a restricted budget of \$550. We have already held sixteen debates, with six victories out of the eight decision contests."—*Forest H. Rose, Southeast Missouri State Teachers.*