

2. I usually listen to constructive arguments, not rebuttals, so not qualified to pass a decision.

3. Occasionally I have had the opportunity to hear one of my teams in competition, but did not do so because it has not generally been the practice of coaches to do so. I think it would be a sound practice.

4. I have had some debate teams whose coach had been able to listen in high school and these individuals wanted me to listen. I've had others who fell apart when I walked into the room.

5. I would not favor it as a steady diet, but neither would I favor eliminating it entirely.

6. Since this in practice doesn't work because we are busy judging, I would go further and advocate tape recording debates so we all could hear them later.

7. Never hearing one's own debaters and always hearing them are obvious extremes which should be avoided.

8. This is not a simple "yes" or "no" matter. The kind of tournament, date, and other factors would enter into the picture.

9. Of course, by the very nature of tournament debating — many teams and few coaches — most teams will have to get along without having any friendly critics (coaches) in the audience.

10. If we occasionally get a period off we are usually too weary with hearing debates to voluntarily hear another.

11. Whenever such an opportunity arose, I listened to one of my own teams. I wish that more coaches did listen to their own teams. I believe that doing so is valuable, but I feel conspicuous and am fearful of giving offense.

12. I can't see that it makes any difference either way.

## Conclusion

1. Extent of the debate practice (based on the 112 coaches responding):

Only 28 coaches did so during the 1956-57 debate season.

The extent of the practice is small.

2. Number of such debates attended:

The range from 1 time to 6 times indicates the number of debates heard is small.

3. How many would engage in this practice if released from judging duties:

Though an accurate estimate cannot be made from this study, many indicated they would do so if released from judging responsibilities.

4. Range of attitudes expressed toward this debate practice:

Some make a practice of it each debate season.

Some will do so only if requested by one of their teams.

Some will do so even if their own teams do not prefer it.

Some elect never to do it.

Some would do so if freed from judging duties.

5. These open questions suggest themselves:

a) Would it be desirable to encourage this debate practice?

b) How dispel the con charges, suspicions, and concerns?

c) How can the tournament plan be revised to free coaches to hear their teams?



## *From the Desk of the Editor*

Pi Kappa Delta is the largest honorary forensic fraternity in existence. Its tremendous strength is obvious when one is aware of the number of chapters, attendance at national conventions, and the 700 to 900 new members each year. What are the sources of its stability and growth? What are the weaknesses in its structure and program?

We would list the following as factors in its greatness:

1. It is a recognition rather than an honor fraternity. At the Redlands convention in 1955, attempts were made to change PKD to an honor fraternity. Wisdom fortunately prevailed. Students may become members during their freshman year and then proceed up the ladder of degrees and orders. This gives great numerical strength to the organization. It is also educationally sound for a speech program, for it honors while it encourages speech development during the student's college years.
2. Because of this, it has relatively large local chapters whose membership is almost synonymous with the number of students participating in forensics at member colleges. An honor society, reserved for the academically

elite in the upper division, has its tie with superior grades in all subjects. Pi Kappa Delta permits any student active in forensics to be a member and thus is integrated with an active forensics program.

3. It is a federation with strong constitutional provisions at the national level. Requirements of attendance at national conventions and provisions for strong powers delegated to the national organization mean that strength is gained by a united organization. Dead chapters are removed from the organization.
4. It encourages a balanced program of speech activities. While some speech programs have "thrown out the baby with the bath water," Pi Kappa Delta has striven through the years to keep the values of competitive forensics intact while attempting to align these activities with changing speech education philosophy and in keeping with a changing competitive-cooperative controversy.

Let all members of Pi Kappa Delta study carefully the sources of strength in the fraternity that all may appreciate and uphold its dynamic and progressive features. In a later editorial, we shall look at some of our weaknesses.



# Report of the National Questions Committee

HARVEY CROMWELL, *Mississippi State College for Women*

One hundred and thirty-seven Pi Kappa Delta chapters voted on the national questions this year. Two chapters failed to rank the questions, four sent in their votes after the ballots had been tabulated and one did not vote for the discussion questions. There were thus one hundred and thirty-one valid ballots for the debate propositions and one hundred and thirty valid ballots for the discussion questions. The results of the vote on the National Debate and Discussion Topics for 1958-59 are listed below as announced on August 9, 1958. In tabulating the votes, each first-place vote was scored five points; each second-place, four points; each third-place, three points; each fourth-place, two points; and, each fifth-place, one point. The topic in each list receiving the highest total was chosen as the official question.

## DEBATE

Rank		Vote
1st	Resolved, that the further development of nuclear weapons should be prohibited by international agreement .....	1064
2nd	Resolved: That the United States should discontinue the testing of nuclear weapons .....	1055
3rd	Resolved: That Federal price supports for agriculture should be discontinued .....	1025
4th	Resolved: That the Federal Government should establish a system of scholarships for the higher education of talented students .....	989
5th	Resolved: That all electric power facilities in the United States should be operated by private enterprise .....	982

## DISCUSSION

Rank		Vote
1st	How can we improve our relations with Latin America? .....	1064
2nd	What should be the role of the Federal Government in regulating our economy? .....	1037
3rd	How can the threat of nuclear warfare be averted? .....	967
4th	How can American higher education best meet the needs of our times? .....	907
5th	What should be the policy of the United States on disarmament? .....	885

The national questions committee is governed by the following procedures:

(1) The Speech Association of America Committee on Intercollegiate Debate and Discussion is composed of one member from each of the four cooperating forensic societies — Delta Sigma Rho, Phi Rho Pi, Pi Kappa Delta, and Tau Kappa Alpha — one member appointed by the president of the American Forensic Association, and one member appointed by the president of the Speech Association of America. The chairmanship of the committee rotates among the four forensic societies and the AFA and SAA appointees.

(2) Each committee member is responsible for polling the chapters of the organization which he represents. All suggestions for topics must be submitted to committee members not later than the May date set by the committee.

(3) The committee members must meet during the months of May or June to decide on topics and phrase the questions for discussion and the propositions for debate.



(4) The Debate propositions and discussion questions are submitted for preferential vote not later than August first to all chapters of the four forensic organizations and to a representative number of the non-affiliated schools.

(5) If circumstances require a change during the season, the committee may, by a two-thirds vote, alter the wording or move to a second choice proposition or question. Individual chapters or schools are encouraged to write their reactions to the propositions or questions to members of the committee as the forensic year progresses.

(6) The four cooperating forensic societies agree to use the SAA questions as their official propositions for debate and discussion for the college year. This does not prevent individual schools or groups of schools from debating or discussing more than one question during the school year; but it does mean that none of the four societies would select a different question.

(7) The topics must be announced by September 10.

Working under these regulations, the following committee members met in Chicago, Illinois, on June 27 and 28, 1958, and phrased the topics listed above: Orville Hitchcock, State University of Iowa, Delta Sigma Rho; Glenn L. Jones, Pueblo Junior College, Phi Rho Pi; Harvey Cromwell, Mississippi State College for Women, Pi Kappa Delta; Austin J. Freeley, John Carroll University, American Forensic Association; Winston Brembeck, University of Wisconsin, Speech Association of America; and T. Earle Johnson, Chairman, University of Alabama, Tau Kappa Alpha.

The regulations under which the committee operates prevent issuing any official interpretation by the committee, nor is any organization or individual so authorized. The right of interpretation rests with those who debate the question. The committee has attempted to phrase questions that are broad in scope in order to encourage thorough analysis and investigation and to give the advantage to those students doing the more extensive and intelligent work. The committee members

hope the topics chosen will provide a profitable forensic experience during this school year.

## **PI KAPPA DELTA CHAPTER WINS NATIONAL DISCUSSION CONTEST**

The Texas Pi Chapter, St. Mary's University, San Antonio, Texas, won first place in the Seventh National Contest in Public Discussion in a field of thirty-two colleges and universities. Illinois Sigma, Eastern Illinois University, also survived the sectional and semi-final judging to reach the final round.

Pi Kappa Delta schools which reached the semi-final round and were eliminated at that point were Los Angeles State College, Bradley University, Kent State University, the University of Dubuque, Wisconsin State College at Eau Claire, and the University of Illinois at Chicago.

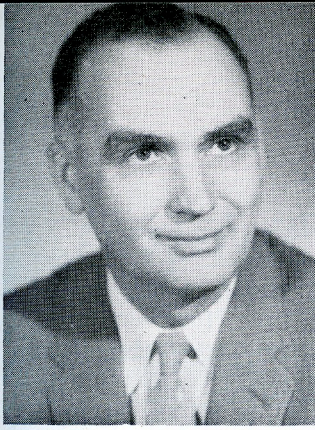
Second and third places in the contest went respectively to Iowa State College and the University of Southern California.

Judges for the national finals were Carroll Arnold and John Wilson, both of Cornell University, and Wayne N. Thompson, University of Illinois at Chicago. Judging for the sectional and the semi-final contests was arranged by thirteen different chairmen located on as many campuses.

The National Contest in Public Discussion, which Wayne N. Thompson originated and still sponsors, is conducted by tape recording. Each college has a team of four or five undergraduates which makes a twenty-five-minute tape on the current national question. The tape is assigned to a judging center, and those making the best showing at the sectional level advance to the finals.

Declarations of entry for the Eighth National Contest should be sent to Dr. Thompson, University of Illinois, Navy Pier, Chicago 11, Illinois, not later than November 15, 1958. He will send shipping instructions, and tapes should be ready for mailing by December 1. All universities, colleges, and junior colleges are eligible to participate, and further information will be sent by the contest manager upon request.





## President's Letter

This is National Pi Kappa Delta Convention year. No one is more aware of this than your Council members who, at this writing, have just returned from the biennial summer meeting. I would like to take this opportunity to make you equally aware of the convention.

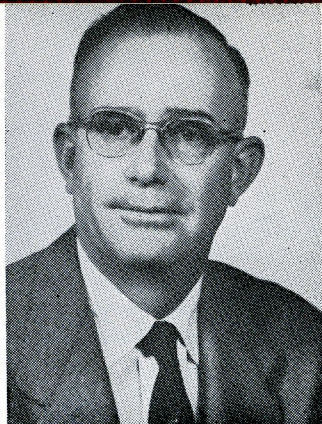
An organization as large and as active as Pi Kappa Delta can accumulate a surprising amount of business in a short time. Although your officers are in constant written communication with each other, there are many matters which can be clarified only around the conference table. Some of the major items requiring attention were the ordinary financial problems, the society publications, public relations and research, new chapters and probationary chapters, alumni relations, scholarship and alumni awards. But these are matters on which you are kept informed through the pages of the *Forensic* and which are open for discussion at the business meetings of the Convention.

Another major item on our agenda this past summer was, of course, the Convention, involving as it does countless details concerning program and personnel. The January issue of the *Forensic* will feature detailed information concerning all phases of the convention. The dates and place, as you know, have been set for more than a year. The time is early this year, March 22 to 27. Only once in recent years have we opened early and that was in 1951 when registration was held on March 25. Easter and Spring vacation determine our dates and although there may be snow in the mountains we'll hope for the best. Our hosts at Bowling Green State University, Bowling Green, Ohio, have been making plans and organizing on the home front since a year ago last summer. Some of the Chapter sponsors will recall the fine hospitality received when we held our convention there in 1947. You will be amazed at the expansion in buildings and facilities over the past twelve years. You will also be pleased to renew acquaintances with members of the faculty and administrative staff who are serving as hosts for the second time. We can be assured of the very best at Bowling Green.

Early planning is especially important for our chapters which were not in attendance at Brookings in 1957, since our constitution provides that "Any chapter failing to have a delegate at two consecutive national conventions, shall be placed on probation." In some cases newly appointed chapter sponsors may desire information about the purposes and activities of Pi Kappa Delta. Your Province Governor is ready to help. Your National Secretary-Treasurer and every member of the Council will be happy to assist in any possible way.

This leads me to a special invitation. A Pi Kappa Delta meeting is scheduled during the Chicago Convention of the Speech Association of America in December. The hour is five to six on Tuesday afternoon, December 30. This is just a gathering of coaches, sponsors and those interested in Pi Kappa Delta for the purpose of discussing informally any matters of mutual interest. This meeting provides a good opportunity for new chapter sponsors and new debate coaches to become better acquainted with each other and with some of the old-timers in the society. Check your program for the meeting room. There may be some questions relative to the convention which we will want to talk about. The important point is that this is not just a meeting of the National Council, but it is for all interested Pi Kappa Deltans.





## Secretary's Page

The financial report for 1957-58 reflects the usual decline in the off-Convention year. However, continued growth is indicated as new memberships for the year were substantially higher than the off year two years ago and were over one-hundred more than four years ago.

This issue of *The Forensic* includes the complete financial report for last year. Some of the highlights of the report are given below.

Eighteen chapters sent in a total of \$100.00 or more for all purposes with three new chapters at the top of the list. University of Illinois at Chicago, leader for the past two years, lost to Fresno for first place honors by a small difference of ninety-seven cents. Other chapters that exceeded the \$100.00 total for the second year were Emporia, Central Michigan, Bradley, Morris Harvey, Pacific Lutheran, and Southwestern Kansas.

1. Fresno .....	\$198.95	10. River Falls .....	\$131.28
2. Uni. of Illinois, Chicago .....	\$197.98	11. Emporia .....	\$125.25
3. East Tennessee .....	\$192.90	12. Pacific Lutheran .....	\$123.85
4. South Dakota State .....	\$184.20	13. Mississippi College .....	\$116.50
5. Marietta College .....	\$170.70	14. Morris Harvey .....	\$115.42
6. Los Angeles State .....	\$163.40	15. Macalester .....	\$111.70
7. Southwestern Kansas .....	\$149.55	16. Central Michigan .....	\$108.20
8. Bowling Green .....	\$133.55	17. College of Idaho .....	\$105.00
9. Bradley .....	\$131.45	18. Eau Claire .....	\$103.00

Nineteen chapters initiated ten or more new members with eight chapters in the honor group for the second year. In addition to membership fees the total includes all purchases except keys.

1. Los Angeles State .....	\$150.00	11. Fresno .....	\$ 92.00
2. Northwest Nazarene .....	\$144.00	12. Central Michigan .....	\$ 81.00
3. Marietta College .....	\$137.75	13. Montana State .....	\$ 77.00
4. East Tennessee .....	\$119.00	14. Bowling Green .....	\$ 77.00
5. Southwestern Kansas .....	\$112.00	15. Bradley .....	\$ 70.25
6. Uni. of Illinois, Chicago .....	\$112.00	16. Illinois State Normal U. ....	\$ 70.00
7. Macalester .....	\$111.70	17. Lenoir Rhyne .....	\$ 70.00
8. College of Idaho .....	\$105.00	18. Baylor .....	\$ 70.00
9. Eau Claire .....	\$ 98.00	19. Seattle Pacific .....	\$ 70.00
10. Humboldt .....	\$ 98.00		

Those in the honor group were University of Illinois at Chicago, Humboldt, Central Michigan, Fresno, Southwestern Kansas, Eau Claire, Marietta and Baylor.

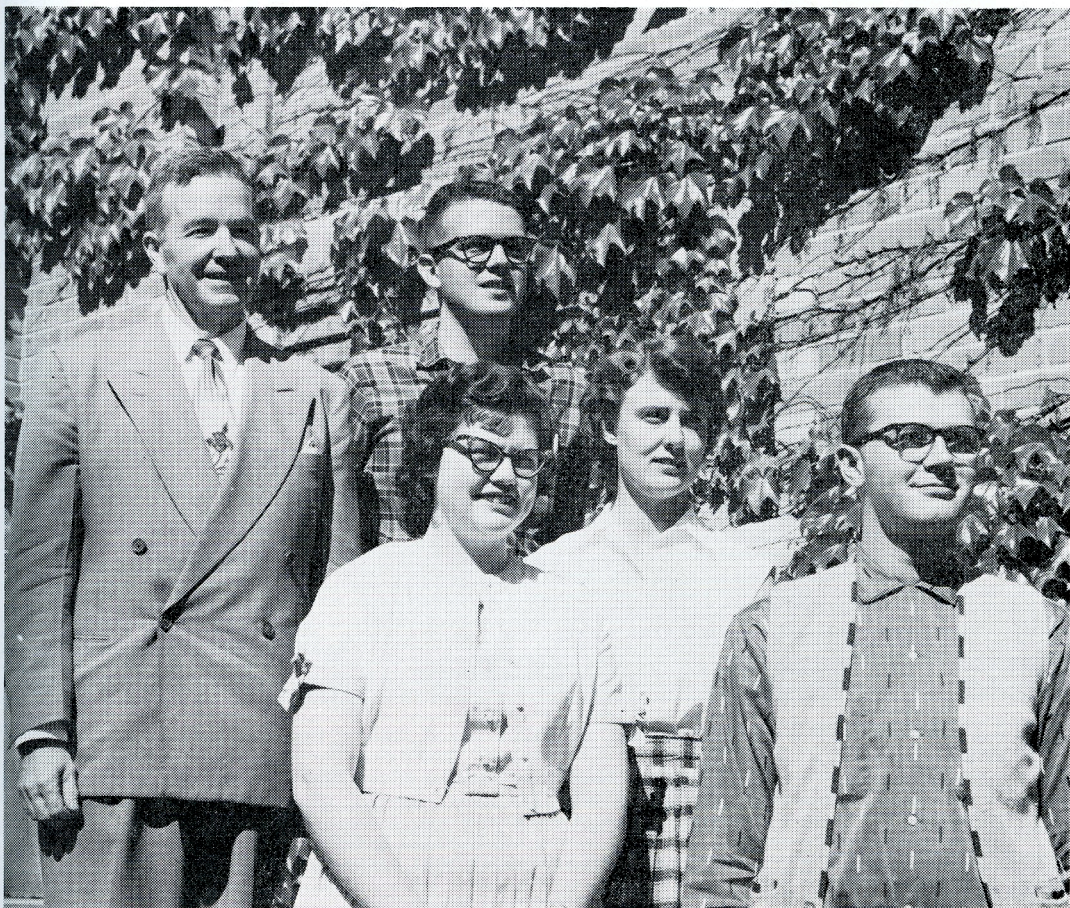
Sixteen schools sent forty dollars or more for keys, as follows:

1. River Falls .....	\$124.28	9. Bradley .....	\$ 61.20
2. South Dakota State .....	\$121.20	10. Bowling Green .....	\$ 56.55
3. Fresno .....	\$106.95	11. Grove City .....	\$ 53.20
4. Pacific Lutheran .....	\$ 90.85	12. William Jewell .....	\$ 52.19
5. Morris Harvey .....	\$ 87.43	13. Maryville .....	\$ 45.65
6. Univ. of Illinois, Chicago .....	\$ 85.98	14. T. C. U. ....	\$ 43.35
7. East Tennessee .....	\$ 73.90	15. Central Iowa .....	\$ 42.70
8. Emporia .....	\$ 62.25	16. Heidelberg .....	\$ 40.10

Six chapters were in the honor group last year: Emporia, University of Illinois at Chicago, Bradley, Morris Harvey, Pacific Lutheran, East Tennessee.



# Chapter Notes



Newly-elected officers of Idaho Alpha who will direct the honorary fraternity's destinies next year are shown in the picture as follows: Back row, from left, Dr. Lester McCrery, advisor; Ted Wills, Monrovia, California, vice president; front row, from left, Alice Mathews, Nampa, secretary; Jean Schwiebert, Caldwell, treasurer; and Bob Sears, Caldwell, president.

## COLLEGE OF IDAHO

This year Idaho Alpha culminated its forensic season with a special thirtieth anniversary dinner to which were invited all alumni who were former debaters at the College of Idaho.

Over a hundred invitations were issued, contacting business and professional men

and women all over the United States. Not all attended the banquet, but a good number from nearby towns were there. Special guest of honor was Dr. Herbert Hayman who was one of the original charter members of Idaho Alpha. Dr. and Mrs. Hayman were seated at the head banquet table. Plans were set up to make the alumni banquet an annual event.





Five members of Missouri Delta Chapter at William Jewell College won the sweepstakes trophy in the University of Nebraska Debate and Discussion Conference last February. In debate, the women's team of Aloah Burke and Ann Faubion won team and individual superiors; the men's team of Max von Erdmannsdorff and Donald Witt won team superior. Aloah Burke won superior in discussion; Ann Faubion, superior in interpretation; Max von Erdmannsdorff, superior in individual debate and in extemporaneous speaking. Left to right, Aloah Burke, Georgia Bowman, director of forensics; Ann Faubion, Max von Erdmannsdorff, Donald Witt, and Dave Morton.

## WASHINGTON STATE

The 1957-58 debate season was the 31st and last year for Coach W. H. Veatch of the State College of Washington. With the loss of nine seniors from the previous year things were not too bright. Yet in June it was discovered they had done pretty well.

Columbia Valley Tournament at W.S.C. gave first to W.S.C. in both Junior and Senior Men's Division. Women of the squad took first in the Women's Inland Empire Tournament. In January W.S.C. won first in the Idaho Junior Varsity Tournament. At the College of Puget Sound there were several finalists and

second place was captured in Senior Men's Division and in Junior Women's Division.

At Linfield, there were many finalists but only one trophy. Ken Frandsen won first in Interp. In May came the Tau Kappa Alpha Tournament at Montana University. There W.S.C. won second in Men's Debate by Hugh McNamar and John Junker. The two had never debated before this year. They have never had a record of less than 4-2. At Montana W.S.C. captured second in Men's Interp and third in both Men's and Women's Extemp.

Perhaps the biggest success was at the Pi Kappa Delta Provincial at Idaho State



College. There Ken Frandsen and Dick Steiner went through seven rounds undefeated to win first in Men's Debate. The team of Larry Jones and Dave Hill went through the quarter finals. Ken Frandsen took first in experimental T.V., while Margie Martini took third in Women's Oratory and Dave Hill was a finalist in Extemp. The first place gave Frandsen and Steiner the right to be W.S.C.'s team at the West Point Tournament, April 17-23.

To close out the year the annual Pi Kappa Delta Breakfast was held May 18. There the W.S.C. squad announced the establishment of the W. H. Veatch Award to be presented every year to the outstanding student or faculty member in forensics for the year. This award was presented in appreciation to Mr. Veatch for his service to the school. Hugh McNamar received the Harold Rock Scholarship for his record of 32-7. The last year was not a failure — but rather successful for Mr. Veatch's last year.

## WISCONSIN STATE, EAU CLAIRE

The 14th Annual Speech Meet at Eau Claire, February 13, 14 and 15, attracted the largest number of participants in the history of the tournament, and for the first time, after the acceptance of 110 debate teams, it was necessary to refuse applicants.

Winners of the various events were as follows: "A" division debate, Marquette; "B" division debate, Northwestern University; discussion, St. Olaf; extempore speaking, Eau Claire; narrative reading, Hamline University; oratory, Loras College; after dinner speaking, Eau Claire; and the sweepstakes plaque was awarded

to Northwestern University for the second successive year.

Eau Claire women debaters, Kathie Kidd and Jocelyn Gilbertson, won their way into the final round of the Northwest Debate Tournament, coming within one vote of retaining the championship for the second year in succession. Eau Claire men won seven out of eight debates.

At Notre Dame, in March, Charles Bush received an outstanding debater award, while he and his partner, Jocelyn Gilbertson, were quarter finalists at the Heart of America Tournament at the University of Kansas.

Kathie Kidd won the Wisconsin Oratorical Championship, and the best debate record of 48 wins and 11 losses gave our varsity squad an invitation to the West Point District Four where they won one of five bids to proceed to West Point, New York for the seventh year.

In April, the Upper Mississippi Provincial at St. Thomas resulted in Eau Claire's winning the Provincial sweepstakes, a tradition unbroken since the issuing of the charter. The chapters of the Province voted to give Past-Governor Grace Walsh the governor's ring of Pi Kappa Delta.

At West Point, New York, Eau Claire lost to Dartmouth and Harvard, and won over the University of Illinois, the University of Oklahoma, the University of Miami, Pennsylvania, MIT, and Augustana College of Rock Island. On the last day of the tourney Eau Claire lost to Northwestern University in the octi-final round.

At the Marquette University Tournament Jocelyn Gilbertson received a gold medal for being one of the four outstanding debaters of the tournament.



Eau Claire Speech Meet Banquet attended by 350 people from eleven states.



# CHAPTER REPORTS

Fees paid and keys ordered August 1, 1957 to July 31, 1958

School	Certificates & Fees	Keys	Total	Refunds
Alabama				
Alabama College .....				
Spring Hill College .....				
Arizona				
Arizona State College .....	21.00	14.35	35.35	
Arkansas				
Ouachita College .....	7.00		7.00	
Harding College .....	39.00		39.00	
California				
University of Redlands .....	52.50	5.00	57.50	
California Institute of Technology....	28.00	8.20	35.20	
College of the Pacific .....	56.00		56.00	
Univ. of California, Los Angeles.....				
Pepperdine College .....				
San Diego State College .....	63.00	7.55	70.55	
Pasadena College .....	64.00		64.00	
Chico State College .....	43.75	6.75	50.50	
Los Angeles State College .....	150.00	13.40	163.40	
Upland College .....				
Humboldt State College .....	98.00		98.00	
Fresno State College .....	92.00	106.95	198.95	
Loyola University of Los Angeles.....	7.00		7.00	
Colorado				
Colorado State University .....		9.95	9.95	
Colorado State Col. of Ed. ....	21.00	6.59	27.59	
Western State College .....	28.00		28.00	
Adams State College .....	28.00		28.00	
Florida				
Stetson University .....	25.00		25.00	
Georgia				
University of Georgia, Athens .....	21.00		21.00	
Georgia State College, Atlanta .....				
Idaho				
College of Idaho .....	105.00		105.00	
Idaho State College .....	56.00	35.45	91.45	
Northwestern Nazarene College .....	144.00		144.00	
Illinois				
Illinois Wesleyan University .....	69.50	5.00	74.50	
Eureka College .....	37.50	19.30	56.80	
Carthage College .....				
Bradley University .....	70.25	61.20	131.45	
Monmouth College .....	15.00		15.00	
Illinois State Normal Univ. ....	70.00	8.45	78.45	
North Central College .....	14.00	17.90	31.90	
Wheaton College .....	56.00	22.30	78.30	
Western State College .....	28.00	27.52	55.52	
Augustana College .....	28.00	31.40	59.40	
Northern State University .....	28.00		28.00	
Illinois College .....	35.00	15.85	50.85	7.00
McKendree College .....				
Principia, The .....				
Eastern State College .....	21.00		21.00	
James Miliken University .....		14.90	14.90	
Southern Illinois University .....	42.00	33.65	75.65	
Greenville College .....	28.75	28.05	56.80	
University of Illinois, Chicago .....	112.00	85.98	197.98	
Indiana				
Franklin College .....				
Iowa				
Central College .....	28.00	42.70	70.70	4.54
Morningside College .....	63.00	30.00	93.00	
Simpson College .....	22.50		22.50	



School	Certificates & Fees	Keys	Total	Refunds
Upper Iowa University .....	28.00		28.00	
Coe College .....	42.00		42.00	
Westmar College .....				
Buena Vista College .....	42.00	29.27	71.27	
University of Dubuque .....	56.00	10.00	66.00	
Drake University .....				
Luther College .....		5.00	5.00	
Kansas				
Ottawa University .....	35.00	15.00	50.00	
Washburn University .....				
Southwestern University .....	112.00	37.55	149.55	
Kansas State College, Emporia .....	63.00	62.25	125.25	
Kansas State College, Pittsburg .....	21.00		21.00	
Baker University .....	7.00	6.75	13.75	
Sterling College .....	56.00		56.00	
Bethany College .....				
Ft. Hays State College .....	35.00	33.50	68.50	
Bethel College .....	23.25		23.25	
McPherson College .....	43.00	11.05	54.05	
Tabor College .....	42.00	10.85	52.85	
Kentucky				
Georgetown College .....				
Centre College .....	8.75		8.75	
Kentucky Wesleyan University .....	35.00	26.20	61.20	
Louisiana				
Louisiana College .....	28.50	5.00	33.50	
Centenary College .....				
Southwestern La. Institute .....	49.00		49.00	
La. Institute of Technology .....				
Northwestern State College .....	35.00		35.00	
Southeastern Louisiana College .....		12.70	12.70	
Maine				
University of Maine .....	15.00		15.00	
Michigan				
Kalamazoo College .....	28.00	7.25	35.25	
Hope College .....	22.50		22.50	1.50
Eastern Michigan State College .....				
University of Detroit .....	22.50	16.85	39.35	
Central Mich. State College .....	91.00	17.20	108.20	
Minnesota				
Macalester College .....	11.70		111.70	
St. Olaf College .....	42.00		42.00	
Gustavus Adolphus College .....		14.55	14.55	
Hamline University .....	42.00		42.00	
College of St. Thomas .....	7.00		7.00	
Concordia College .....	14.00		14.00	
St. Mary's College .....	42.00		42.00	
College of St. Catherine .....				
Mississippi				
Millsaps College .....				
Mississippi State College .....				
Mississippi State Col. for Women .....	21.00	15.00	36.00	
Mississippi College .....	109.00	7.50	116.50	
Mississippi Southern				
Missouri				
Westminster College .....	28.00	24.00	52.00	
Central College .....	14.00		14.00	
William Jewell College .....	43.00	52.19	95.19	
Culver Stockton College .....	49.00	5.25	54.25	
Central State College .....	21.00		21.00	
Northeast State College .....	35.00	29.25	64.25	
Southeast State College .....	35.00	24.16	59.16	
Drury College .....	14.00		14.00	
Rockhurst College .....	7.00		7.00	
Missouri Valley College .....				
Tarkio College .....				
Northwestern State College .....				

School	Certificates & Fees	Keys	Total	Refunds
Montana				
Montana State College .....	77.00	15.00	92.00	
Eastern Montana State Col. of Ed. ..	56.00		56.00	
Nebraska				
Nebraska Wesleyan University .....				
Doane College .....	7.00		7.00	
Hastings College .....	7.00		7.00	
Nebraska State College, Kearney .....	28.00	20.00	48.00	
University of Omaha .....	29.50	5.00	34.50	
Nebraska State College, Wayne .....	42.00		42.00	
Midland College .....	42.50	19.90	62.40	1.40
North Carolina				
Wake Forest College .....	63.00		63.00	
Lenoir Rhyne College .....	70.00		70.00	
Appalachian State Teachers .....	63.00		63.00	
Ohio				
Baldwin Wallace College .....	7.00		7.00	
Heidelberg College .....	35.00	40.10	75.10	
University of Akron .....	6.35		6.35	
Marietta College .....	137.75	32.95	170.70	2.00
Bowling Green State University .....	77.00	56.55	133.55	
Otterbein College .....	22.50	7.37	29.87	
Kent State University .....	35.00		35.00	
Hiram College .....				
Oklahoma				
Oklahoma State University .....	28.00		28.00	
Tulsa University .....				
Oklahoma Baptist University .....		5.26	5.26	
Oklahoma City University .....		14.00	77.00	
East Central State College .....	63.00			
Southeastern State College .....				
Central State College .....	42.00	32.40	74.40	
Phillips University .....	57.50	26.94	84.44	1.50
Northeastern State College .....	42.00		42.00	
Southwestern State College .....		36.75	36.75	
Oregon				
Linfield College .....	21.00	8.34	29.34	
Lewis & Clark College .....	42.00		42.00	
Portland State College .....	42.00		42.00	
Pennsylvania				
Grove City College .....	15.75	53.20	68.95	
South Dakota				
Dakota Wesleyan University .....	42.00		42.00	
Huron College .....				
Yankton College .....	45.00		45.00	
South Dakota State College .....	63.00	121.20	184.20	
Sioux Falls College .....	23.50		23.50	
Northern State Teachers .....	35.00	11.33	46.33	
Augustana College .....		6.70	6.70	
Black Hills State Teachers .....	11.50	8.45	19.95	
Southern State Teachers .....	28.00	23.20	51.20	
Tennessee				
Maryville College .....	42.00	45.65	87.65	
East Tenn. State College .....	119.00	73.90	192.90	
Tennessee Polytechnic Institute .....	42.00		42.00	
Carson Newman College .....				
Middle Tennessee State College .....	49.00		49.00	
David Lipscomb College .....	21.00		21.00	
Texas				
Trinity University .....				
Howard Payne .....	7.00		7.00	
Mary Hardin-Baylor College .....				
Texas Christian University .....	49.00	43.35	92.35	
North Texas State College .....	35.00		35.00	
Hardin-Simmons University .....	42.00		42.00	
Baylor University .....	70.00	15.00	85.00	
Stephen F. Austin College .....	16.55		16.55	
Texas College Arts & Industries .....				



Washington	Abilene Christian College .....	21.00		21.00	
	University of Houston .....				
	St. Mary's University .....	63.00		63.00	
	College of Puget Sound .....	70.00		70.00	
	Seattle Pacific College .....		5.40	5.40	
	State College of Washington .....	49.50	15.70	65.20	
	Whitman College .....	57.10		57.10	
	Pacific Lutheran College .....	33.00	90.85	123.85	
	Western Washington .....				
West Virginia	College of Education .....	49.00	23.20	72.20	
	Whitworth College .....				
	St. Martin's College .....				
	Marshall College .....	42.00	29.10	71.10	
Wisconsin	Morris Harvey College .....	28.00	87.42	115.42	
	Ripon College .....	56.00		56.00	
	Carroll College .....				
	Wisconsin State College .....				
	Wisconsin, River Falls .....	7.00	124.28	131.28	
	Wisconsin, Whitewater .....	42.00		42.00	
	Wisconsin, Eau Claire .....	98.00	5.00	103.00	
	Wisconsin, Oshkosh .....	14.00		14.00	
Provinces .....		181.18	181.18		
Grand Totals .....		\$6,021.95	\$2,421.38	\$8,443.33	\$17.94

## ANNUAL REPORT OF THE TREASURER

August 1, 1957 - July 31, 1958

### RECEIPTS

Fees and Certificates .....	\$ 6,021.95
Keys .....	2,421.38
The Forensic .....	37.00
Balance - July 31, 1957 .....	1,621.09
<b>TOTAL .....</b>	<b>\$10,101.42</b>

### DISBURSEMENTS

The Forensic .....	\$ 3,293.63
Offices, secretarial help, and supplies .....	1,664.15
Keys .....	2,396.84
Printing .....	696.77
Postage, Phone and express .....	65.00
Question Committee .....	126.70
National Convention .....	131.00
Returned Checks .....	64.40
Refunds .....	17.94
Miscellaneous .....	191.80
Balance - July 31, 1958 .....	1,453.19
<b>TOTAL .....</b>	<b>\$10,101.42</b>

### STATEMENT OF ASSETS OWNED

Balance - July 31, 1958 .....	\$ 1,453.19
Invested in Bonds .....	3,000.00
Accounts Receivable .....	206.91
Prepaid on National Convention .....	131.00
<b>TOTAL .....</b>	<b>\$ 4,791.10</b>

### TO WHOM IT MAY CONCERN:

This is to certify that I have examined the books and records of Pi Kappa Delta Fraternity for the period from August 1, 1957, to July 31, 1958, inclusive.

The foregoing statement is prepared in conjunction with Dr. D. J. Nabors, according to established form, and is a true and correct report of the financial status of the organization as of this date.

Signed: *R. Burl Harris*, Auditor  
R. Burl Harris, Auditor



# PRICE LIST

Revised September 1956

Prices include all taxes and handling charges.

Degree	Miniature (with pin)	Small (lavalier)	Large (fob)
DEBATE (Pearl)			
Fraternity (Ruby) .....	\$ 5.00	\$ 5.60	\$ 6.70
Proficiency (Amethyst) .....	5.00	5.60	6.70
Honor (Emerald) .....	5.60	6.15	7.25
Special Distinction .....	8.20	10.35	13.75
(Diamond)			
ORATORY (Ruby)			
Fraternity .....	\$ 5.85	\$ 6.40	\$ 7.55
Proficiency .....	5.85	6.40	7.55
Honor .....	6.40	7.00	8.10
Special Distinction .....	8.95	11.20	14.55
TWO ORDERS (Turquoise)			
Fraternity .....	\$ 5.85	\$ 6.40	\$ 7.55
Proficiency .....	5.85	6.40	7.55
Honor .....	6.40	6.95	8.10
Special Distinction .....	8.95	11.20	14.55
THREE ORDERS (Diamond)			
Fraternity .....	\$ 8.95	\$11.20	\$14.55
Proficiency .....	8.95	11.20	14.55
Honor .....	9.50	11.75	15.10
Special Distinction .....	12.03	15.98	21.53
INSTRUCTION (Emerald)			
Fraternity .....	\$ 6.40	\$ 6.95	\$ 8.10
Proficiency .....	6.40	6.95	8.10
Honor .....	6.95	7.55	8.65
Special Distinction .....	9.50	11.75	15.10
HONORARY (Sapphire)			
Fraternity .....	\$ 5.85	\$ 6.40	\$ 7.55
Proficiency .....	5.85	6.40	7.55
Honor .....	6.40	6.95	8.10
Special Distinction .....	8.95	11.20	14.55

## SPECIAL CHARGES

For Pin attachment on large and small sizes add \$1.15.

For white gold (special distinction only) add \$1.15.

Guard chain with gold initial pin (chapter Greek letter) add \$1.70.

Charge for changing jewels in old keys, 50 cents.

Allowances: Gold in yellow gold keys exchanged for white gold  
 large and small keys; \$1.50 Miniature; \$1.00.  
 Full value will be allowed on rubies, sapphires, and turquoises and emeralds  
 exchanged for new jewels or white gold key.

Handling charge for changing jewels in old keys, 50 cents.

Address all key orders to the National Secretary:

D. J. Nabors  
 East Central College  
 Ada, Oklahoma



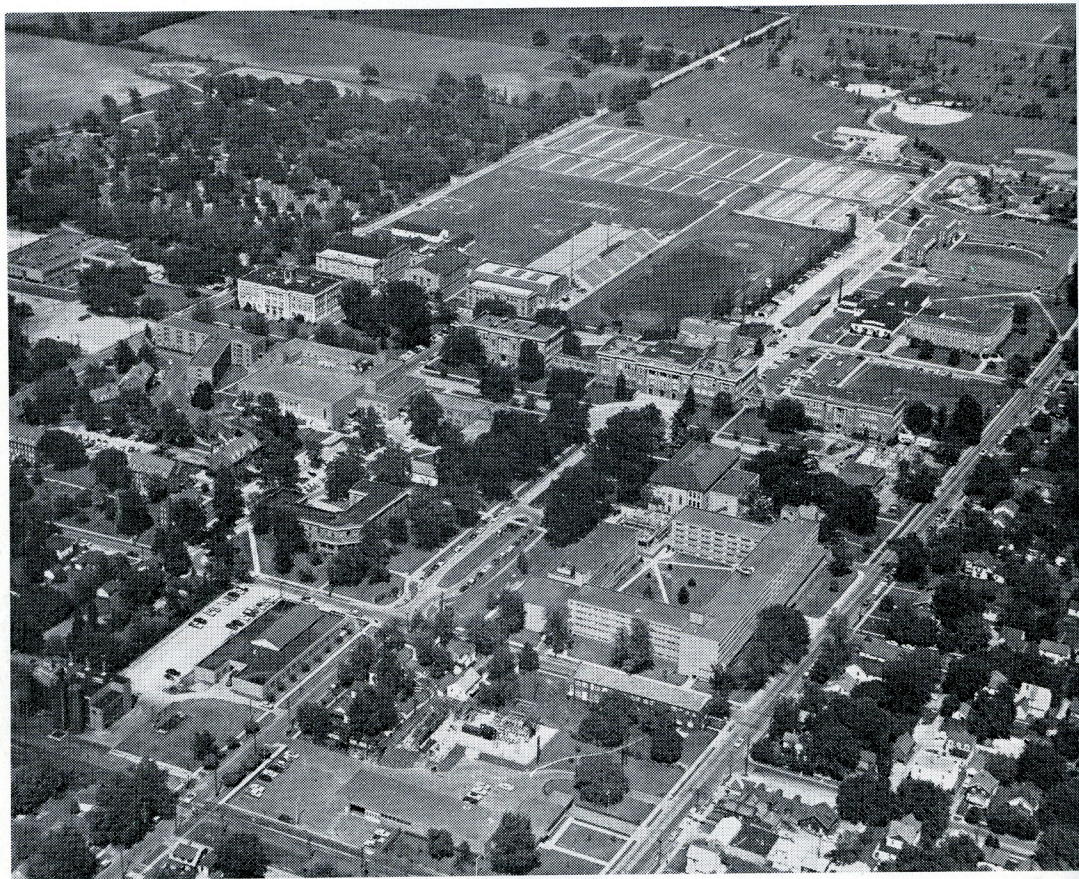
# *In This Issue*

OCTOBER, 1958

First Annual Shields PKD Scholarship Winner Chosen . . . . .	3
National Council Meets in Estes Park . . . . .	5
Forensics, Tournaments, and The Pursuit of Trophies . . . . .	6
National Convention To Be in Ohio . . . . .	9
Forensics at a Land-Grant Institution . . . . .	10
The Potential Killer . . . . .	12
Questions Asked 182 Chapters . . . . .	14
From The Desk of the Editor . . . . .	18
Reports of the National Questions Committee . . . . .	19
President's Letter . . . . .	21
Secretary's Page . . . . .	22
Chapter Notes . . . . .	23
Chapter Reports . . . . .	26
Annual Treasurer's Report . . . . .	29
Keys Price List . . . . .	30
National Convention View From The Air . . . . .	32



*All Roads Lead to . . .*



**THE NATIONAL CONVENTION**

and

**TOURNAMENT OF PI KAPPA DELTA**

at

**Bowling Green State University**

Ohio - on

**March 22 - 27, 1959**