

WOMEN'S EXTEMPORE SPEAKING

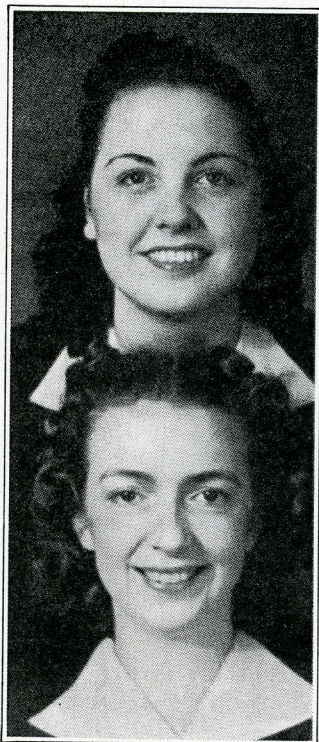
(Continued)

College	Preliminaries								Total
39. Yankton	6	7	6	1	5	5	4	5	43
41. Eureka	5	5	8	8	6	7	4	1	1
41. William Penn	6	5	4	4	6	6	3	5	6
43. DeKalb, Illinois	6	6	6	4	2	6	4	7	5
43. Puget Sound	5	8	3	5	6	5	5	4	5
45. South Dakota State	5	7	6	2	5	6	7	7	3
45. Wheaton	5	7	5	5	5	5	4	5	7
47. Emporia Teachers	3	4	3	8	8	7	6	3	7
47. Gustavus Adolphus	4	5	6	3	5	7	7	6	6
49. Colorado State	7	6	7	7	5	5	8	3	2
50. Akron	6	2	6	6	5	6	8	8	8
51. East Texas	8	7	6	7	6	7	3	6	6
52. Grove City	7	6	7	5	8	8	6	7	5
53. Tusculum	7	5	7	7	6	8	6	6	6
54. Warrensburg	4	5	3



THE NICHOLS' SMILE

The founder of Pi Kappa Delta has a right to smile. His Redlands' speakers are surrounded by trophies. From left to right: Wm. Roskam, first in debate and sixth in oratory; Prof. E. R. Nichols himself; Eugene Sill, member of the Student Assembly; Carl G. Burness, first in debate and extempore; Nancy Rankin, quarter-finals in debate and semi-finals in oratory; and Mary K. Browne, Miss Rankin's teammate in debate.



LOIS MALLON

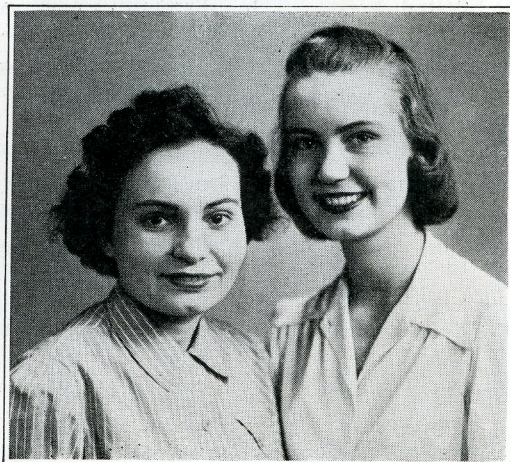
BARBARA ROBERTS

Baylor, Texas Iota

First in women's debate.

Both are speech majors.

They have entered eight tournaments this year and have gone to the finals in all but one. They have won first in five major tournaments. Miss Mallon is a senior who plans to teach next year. Miss Roberts is a junior.



MARJORIE BAUMGARTEN and
VICTORY PEARSON

Augustana, Illinois Xi
Second in Debate

Women's

The affirmative team is listed first.

Round 1	Round 2	Round 3	Round 4
Lenoir Rhyne L	S. D. Wes. . . L	Lenoir Rhyne L	Kalamazoo . . W
Colorado State . . . W	Lenoir Rhyne W	Ada W	Lenoir Rhyne L
Iowa Wesleyan . . . L	Akron L	Ia. Wes. . . . L	Yankton . . . L
Kalamazoo W	Iowa Wes. . . . W	Concordia . . W	Ia. Wes. . . . W
Park W	Aug., Ill. . . . L	Park W	Ada W
Yankton L	Park W	Bowl. Green . L	Park L
Sterling L	Colo. State . . L	Sterling L	Concordia . . W
Ada W	Sterling W	Eureka W	Sterling L
Denton, Texas L	Kalamazoo . . L	Denton L	Eureka W
Concordia W	Denton W	Aug., S. D. . . W	Denton L
Pittsburg Teach. K. L	Ada W	Pittsburg . . . L	Aug., S. D. . . W
Eureka W	Pittsburg . . . L	Ouachita . . . W	Pittsburg . . . L
Carroll L	Concordia . . L	Carroll W	Bowl. Green . L
Augustana, S. D. . W	Carroll W	Greeley L	Carroll W
Hastings W	Yankton L	Hastings . . . W	Ouachita . . . W
Bowling Green . . . L	Hastings . . . W	Durant L	Hastings . . . L
Central, Iowa L	Eureka L	Cen., Ia. . . . L	Greeley W
Ouachita W	Central, Ia. . . W	S. D. State . . W	Cen., Ia. . . . L
William Jewell . . . W	Aug., S. D. . . L	Wm. Jewell . . L	Durant L
Greeley L	Wm. Jewell . . W	I. S. N. U. . . W	Wm. Jewell . W
S. W. Tex. Teach. . L	Bowl. Green . L	S. W. Texas . . L	S. D. State . . L
Durant W	S. W. Texas . W	Mich. State . W	S. W. Texas . W
S. W. Kansas W	Ouachita . . . L	S. W., Kan. . W	I. S. N. U. . . L
S. Dak. State L	S. W., Kan. . W	Kent L	S. W., Kan. . W
Transylvania L	Greeley L	Transy. . . . W	Mich. State . . L
Ill. State Nor. U. . W	Transy. . . . W	La. Inst. . . . L	Transy. . . . W
Puget Sound W	Durant W	Puget Sound . L	Kent W
Michigan State . . . L	Puget Sound . L	Aberdeen . . W	Puget Sound . L
Morningside L	S. D. State . . L	Morningside . W	Ia. Inst. . . . W
Kent State W	Morningside . W	Grove City . . L	Morningside . L
Winthrop W	I. S. N. U. . . L	Winthrop . . . W	Aberdeen . . . W
La. Inst. L	Winthrop . . . W	Macalester . . L	Winthrop . . . L
Bethany W	La. Inst. . . . L	Bethany W	Wheaton L
Macalester L	Bethany W	West. State . L	Bethany W
Chadron L	Aberdeen . . . L	Chadron L	Edmond W
Wheaton W	Chadron W	Sioux Falls . W	Chadron L
Georgia Wom. Col. . L	Grove City . . L	Georgia L	West. State . W
Edmond W	Georgia W	Otterbein . . . W	Georgia L

Debate

The affirmative team is listed first.

Round 5	Round 6	Round 7	Round 8
Lenoir Rhyne W Okla. Baptist L	Aug., Ill. . . . W Lenoir Rhyne L	Lenoir Rhyne W Yankton L	Akron W Lenoir Rhyne L
Iowa Wesleyan L S. D. Wesleyan W	Colo. State L Iowa Wes. . . . W	Iowa Wes. . . . L Ada W	Aug., Ill. . . . W Ia. Wes. . . . L
Park W Akron L	Kalamazoo L Park W	Park W Concordia L	Colo. State L Park W
Sterling L Augustana, Ill. . . . W	Yankton L Sterling W	Sterling L Aug., S. D. . . W	Kalamazoo W Sterling L
Denton W Colo. State L	Ada W Denton L	Denton W Eureka L	Yankton W Denton L
Pittsburg W Yankton L	Carroll W Pittsburg L	Pittsburg W Bowl. Green . . L	Grove City L Pittsburg W
Carroll L Ada W		Carroll L Ouachita W	S. D. Wes. . . . W Carroll L
Hastings W Concordia L	Aug., S. D. . . . L Hastings W	Hastings W Greeley L	Eureka W Hastings L
Central, Iowa L Kalamazoo W	Bowl. Green . . W Cen., Ia. L	Cen., Iowa . . . W Durant L	Aug., S. D. . . W Cen., Ia. L
William Jewell W Eureka L	Ouachita W Wm. Jewell . . . L	Wm. Jewell . . . L S. D. State . . . W	Bowl. Green . . L Wm. Jewell . . . W
S. W. Texas L Augustana, S. D. . . W	Greeley W S. W. Texas . . . L	S. W. Texas . . . L I. S. N. U. . . . W	Ouachita L S. W. Texas . . . W
S. W., Kan. W Bowling Green L	Durant W S. W., Kan. . . . L	S. W., Kan. . . . W Mich. State . . . L	Greeley L S. W., Kan. . . . W
Transylvania L Ouachita W	S. D. State . . . W Transy. L	Transy. W Kent L	Durant W Transy. L
Puget Sound W Greeley L	I. S. N. U. . . . W Puget Sound . . . L	Puget Sound . . . L La. Inst. W	S. D. State . . . L Puget Sound W
Morningside L Durant W	Mich. State . . . L Morningside . . . W	Morningside . . W Aberdeen L	I. S. N. U. . . . W Morningside . . L
Winthrop L S. D. State W	Kent L Winthrop W	Winthrop W Grove City . . . L	Mich. State . . . L Winthrop W
Bethany W Kent State L	Grove City L Bethany W	Bethany L Edmond W	Aberdeen L Bethany W
Chadron W La. Inst. L	Macalester L Chadron W	Chadron W West. State . . . L	Concordia L Chadron W
Georgia L Aberdeen W	Wheaton L Georgia W	Georgia L Sioux Falls . . . W	Macalester . . . W Georgia L

WOMEN'S DEBATE

(continued)

Round 1	Round 2	Round 3	Round 4
Simpson W	Macalester . . . L	Simpson . . . W	Sioux Falls . . W
West. St. Colo. . . . L	Simpson . . . W	Detroit L	Simpson L
Alabama L	Wheaton . . . W	Alabama . . . W	Otterbein . . . L
Sioux Falls W	Alabama . . . L	DeKalb L	Alabama . . . W
Baylor W	Edmond . . . L	Baylor W	Detroit L
Otterbein L	Baylor W	St. Olaf . . . L	Baylor W
Fort Hays W	West. State . . L	Fort Hays . . W	DeKalb W
Detroit L	Fort Hays . . W	Madison . . . L	Fort Hays . . L
Cape Girardeau . . . L	Sioux Falls . . L	Cape G. . . . L	St. Olaf W
DeKalb W	Cape G. . . . W	Redlands . . . W	Cape G. L
Kearney L	Otterbein . . . L	Kearney . . . W	Madison L
St. Olaf W	Kearney . . . W	Okla. Bap. . . L	Kearney . . . W
Maryville, Tenn. . . W	Detroit L	Mary. Tenn. . W	Redlands . . . W
Madison L	Mary. Tenn. . W	S. D. Wes. . . L	Mary. Tenn. . L
Coe W	DeKalb W	Coe W	Okla. Bap. . . W
Redlands L	Coe L	Akron L	Coe L
Bethel L	St. Olaf . . . W	Bethel L	S. D. Wes. . . L
Oklahoma Baptist . W	Bethel L	Aug., Ill. . . . W	Bethel W
San Marcos L	Madison L	San Marcos . W	Akron L
S. D. Wesleyan . . . W	San Marcos . W	Colo. State . . L	San Marcos . W
Neb. Wesleyan . . . W	Redlands . . . W	Neb. Wes. . . W	Aug., Ill. . . . W
Akron L	Neb. Wes. . . L	Kalamazoo . . L	Neb. Wes. . . L
	Mich. State . . L	Cen., Mo. . . . L	Grove City . . L
	Cen., Mo. . . . W	Wheaton . . . W	Cen., Mo. . . . W
	Kent W	East Texas . . L	Macalester . . W
	East Texas . . L	Edmond . . . W	East Texas . . L
	Okla. Bap. . . Bye	Yankton . . . Bye	Colo. State . . Bye

WOMEN'S DEBATE

(continued)

Round 5

Round 6

Round 7

Round 8

Simpson W	Edmond . . . W	Simpson . . . W	Wheaton . . . L
Grove City L	Simpson . . . L	Otterbein . . . L	Simpson . . . W
Alabama L	West. State . —	Alabama . . . W	Edmond . . . L
Macalester W	Alabama . . . —	Detroit L	Alabama . . . W
Baylor W	Sioux Falls . L	Baylor W	West. State . . L
Wheaton L	Baylor W	DeKalb L	Baylor W
Fort Hays L	Otterbein . . L	Fort Hays . Bye	Sioux Falls . . L
Edmond W	Fort Hays . W	St. Olaf . . Bye	Fort Hays . . W
Cape Girardeau . . . W	Detroit . . . L	Cape G. . . . W	Otterbein . . . L
West. State, Colo. . . L	Cape G. . . . W	Madison . . . L	Cape G. . . . W
Kearney W*	DeKalb . . . L	Kearney . . . L	Detroit L
Sioux Falls W*	Kearney . . . W	Redlands . . . W	Kearney . . . W
Maryville, Tenn. . . . W	St. Olaf . . . W	Mary. Tenn. . L	DeKalb L
Otterbein L	Mary., Tenn. . L	Okla. Bap. . . W	Mary. Tenn. . W
Coe W	Madison . . . L	Coe W	St. Olaf . . . L
Detroit L	Coe W	S. D. Wes. . . L	Coe W
Bethel L	Redlands . . . W	Bethel L	Madison . . . L
DeKalb W	Bethel L	Akron W	Bethel W
San Marcos L	Okla. Bap. . . W	San Marcos . . L	Redlands . . . L
St. Olaf W	San Marcos . L	Ang., Ill. . . . W	San Marcos . W
Neb. Wesleyan W	S. D. Wes. . . L	Neb. Wes. . . W	Okla. Bap. . . W
Madison L	Neb. Wes. . . W	Colo. State . . L	Neb. Wes. . . L
Central, Mo. L	La. Inst. . . . L	Ken., Mo. . . . L	Kent L
Ill. State Nor. U. . . W	Ken., Mo. . . W	Macalester . . W	Ken., Mo. . . W
East Texas W	Aberdeen . . W	East Texas . . L	La. Inst. . . . L
Mich. State L	East Texas . L	Wheaton . . . W	East Texas . . W
	Eureka L		
	Tusculum . . . W		
Redlands Bye	Akron . . . Bye	Kalamazoo . Bye	Ada Bye

*By special ruling each team was given a win in this debate.

THE FORENSIC OF

WOMEN'S DEBATE

(continued)

Quarter Finals

Baylor W	Ada W	Bethany . . . W	Aug., Ill. . . W
Redlands L	Hastings . . L	Park L	S. W., Kan. . . L

Semi-Finals

Ada L	Bethany L
Baylor W	Augustana, Ill. . . . W

Finals

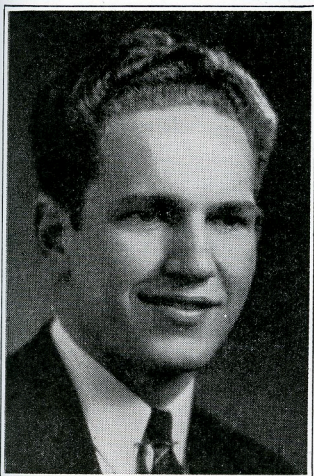
Baylor W
Augustana, Ill. L

The following thirteen teams, which won six of their first eight rounds of debate, received a rating of Excellent.

Augustana, South Dakota	Oklahoma Baptist
Coe	Ouachita
Fort Hays State	Redlands
Central Oklahoma Teachers	Simpson
Hastings	St. Olaf
Illinois State Normal University	Winthrop
Nebraska State Teachers, Kearney	

The following six teams, which won at least seven of their first eight rounds of debate, received a rating of Superior.

Baylor	Park
Augustana, Illinois	Southwestern, Kansas
Bethany	East Central Oklahoma Teachers

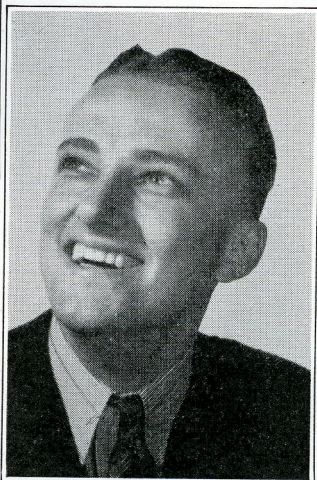


WILLIAM E. ROSKAM
Redlands, California
Alpha

First in debate and sixth
in oratory.

Senior. Four years' ex-
perience. Winner of
many honors in coast
tournaments.

May enter the field of
teaching in speech. For
a picture of his col-
league Burness see
page 136.



WYMAN WUMKES
Augustana, South Dakota
Eta

Second in Debate

Senior.

Represented South Dako-
ta in the Interstate ora-
torical April 25.



KENNETH RASCHKE
Augustana, South Dakota
Eta

Second in Debate

Junior. Three years' ex-
perience.

Winner of many forensic
honors in previous tour-
naments.

The affirmative team is listed first.

Round 1	Round 2	Round 3	Round 4
Augustana, S. D. . . W	Redlands . . . L	Aug., S. D. . . W	Toledo L
Baldwin-Wallace . . L	Aug., S. D. . . W	Okla. A. & M. L	Aug., S. D. . . W
Ouachita L	Rollins L	Ouachita . . . W	Okla. A. & M. W
Toledo W	Ouachita . . . W	Jamestown . . L	Ouachita . . . L
Colo. State W	Washburn . . . L	Colo. State . . L	Jamestown . . W
Okla. A. & M. L	Colo. State . . W	Baylor W	Colo. State . . L
Ill. Wesleyan W	Baldwin-Wal. L	Ill. Wes. L	Baylor W
Jamestown L	Ill. Wes. W	Redlands . . . W	Ill. Wes. L
Iowa Wesleyan L	Toledo W	Iowa Wes. . . . W	Redlands . . . W
Baylor W	Iowa Wes. . . . L	Rollins L	Iowa Wes. . . . L
William Penn L	Okla. A. & M. W	Wm. Penn. . . . L	Rollins L
Redlands W	Wm. Penn. . . . L	Washburn . . . W	Wm. Penn. . . . W
Macalester W	Jamestown . . W	Macalester . . W	Washburn . . . L
Rollins L	Macalester . . L	Bald. Wal. . . . L	Macalester . . . W
Linfield L	Baylor W	Linfield L	Bald. Wal. . . . W
Washburn W	Linfield L	Toledo W	Linfield L
Wheaton L	Grove City . . L	Wheaton W	Caltec L
Presbyterian W	Wheaton W	Stetson L	Wheaton W
Idaho L	Ripon L	Puget Sound . L	Ripon L
Caltec W	Idaho W	Ripon W	Okla. City . . . W
Georgetown L	Neb. Wes. . . . W	Georgetown . . L	Carroll W
Stetson W	Georgetown . . L	Bethany W	Georgetown . . L
Park L	Presby. W	Park W	Bethany W
Carroll W	Park L	Grove City . . L	Park L
Puget Sound W	Caltec W	Puget Sound . L	Grove City . . L
Bethany L	Puget Sound . L	Ripon W	Puget Sound . W
Oklahoma City	Stetson Bye	Okla. City . . . W	
Grove City Bye	Okla. City . . .	Neb. Wes. . . . L	
Greeley W	Carroll W	Greeley W	Neb. Wes. . . . W
Ripon L	Greeley L	Presby. L	Greeley L
Centre L	Bethany W	Centre L	River Falls . . L
Neb. Wesleyan W	Centre L	S. W. Tex. . . . W	Centre W
St. Thomas L	East Texas . . W	St. Thomas . . W	Doane L
Pacific W	St. Thomas . . L	Mich. State . . L	St. Thomas . . W
Dak. Wesleyan W	N. C. State . . L	Dak. Wes. W	Mich. State . . L
Doane L	Dak. Wes. . . . W	Lenoir Rhyne L	Dak. Wes. . . . W
La. College W	Kas. Wes. . . . L	La. College . . W	Lenoir Rhyne L
Mich. State L	La. College . . W	Ada L	La. College . . W

Debate

The affirmative team is listed first.

Round 5	Round 6	Round 7	Round 8
Augustana, S. D. . . . W	Washburn . . . L	Aug., S. D. . . W	Jamestown . . W
Baylor L	Aug., S. D. . . W	Rollins L	Aug., S. D. . . L
Ouachita L	Bald. Wal. . . L	Ouachita . . . W	Baylor W
Redlands W	Ouachita . . . W	Washburn . . . L	Ouachita . . . L
Colo. State W	Toledo W	Colo. State . . L	Redlands . . . W
Rollins L	Colo. State . . L	Bald. Wal. . . W	Colo. State . . L
Ill. Wesleyan W	Okla. A. & M. L	Ill. Wes. . . . L	Rollins L
Washburn L	Ill. Wes. . . . W	Toledo W	Ill. Wes. . . . W
Iowa Wesleyan . . . L	Jamestown . . W	Iowa Wes. . . L	Washburn . . L
Baldwin-Wallace . . W	Ia. Wes. . . . L	Okla. A. & M. W	Iowa Wes. . . W
William Penn W	Baylor W	Wm. Penn . . W	Bald. Wal. . . W
Toledo L	Wm. Penn . . L	Jamestown . . L	Wm. Penn . . L
Macalester W	Redlands . . . W	Macalester . . L	Toledo L
Okla. A. & M. . . . L	Macalester . . L	Baylor W	Macalester . . W
Linfield W	Rollins L	Linfield . . . L	Okla. A. & M. W
Jamestown L	Linfield . . . W	Redlands . . . W	Linfield . . . L
Wheaton L	Wheaton . . . W	Wheaton . . . W	Carroll W
Bethany W	Neb. Wes. . . L	Ripon L	Wheaton . . . L
Idaho L	Presby. . . . L	Idaho L	Edmond L
Grove City W	Idaho W	Neb. Wes. . . W	Idaho W
Georgetown L	Caltec L	Georgetown . L	Grove City . . L
Ripon W	Georgetown . W	Presby. . . . W	Georgetown . W
Park L	Stetson W	Park L	Ripon W
Neb. Wesleyan . . . W	Park L	Caltec W	Park L
Puget Sound W	Carroll L	Puget Sound . W	Neb. Wes. . . W
Presbyterian L	Puget Sound W	Stetson L	Puget Sound . L
Oklahoma City . . . L	Bethany L	Okla. City . Out	Presy. Bye
Caltec W	Okla. City . . W	Carroll . . . Bye	Okla. City . Out
Greeley W	Grove City . . L	Greeley L	Caltec W
Stetson L	Greeley W	Bethany . . . W	Greeley L
Centre L	Ripon L	Centre W	Mary. Tenn. . W
Carroll W	Centre W	Grove City . . L	Centre L
St. Thomas W	Kan. Wes. . . L	St. Thomas . W	Lenoir Rhyne L
Ada L	St. Thomas . W	N. C. State . L	St. Thomas . W
Dak. Wesleyan . . . W	Heidelberg . . L	Dak. Wes. . . W	Dak. Wes. . . L
East Texas L	Dak. Wes. . . W	Kan. Wes. . . L	S. W. Texas . W
La. College W	Doane L	La. College . . L	East Texas . W
N. C. State L	La. College . . W	Pacific W	La. College . . L

MEN'S DEBATE

(continued)

Round 1	Round 2	Round 3	Round 4
Eureka W	Pacific W	Eureka W	Marietta L
Lenoir Rhyne L	Eureka L	Tulsa L	Eureka W
Central, Iowa L	Doane L	Cen., Ia. L	East Texas L
Ada W	Cen., Ia. W	N. C. State W	Cen., Iowa W
Central, Mo. W	Mich. State L	Cen., Mo. L	N. C. State W
East Texas L	Cen., Mo. W	Kan. Wes. W	Cen., Mo. L
Miss. State W	Lenoir Rhyne L	Miss. State W	Kan. Wes. L
N. C. State L	Miss. State W	Pacific L	Miss. State W
Heidelberg L	Ada W	Heidelberg W	Pacific L
Kan. Wesleyan W	Heidelberg L	Doane L	Heidelberg W
Millsaps W	T. C. U. W	Millsaps W	Akron W
Transylvania L	Millsaps L	Otterbein L	Millsaps L
Yankton W	Hastings W	Yankton W	Otterbein L
Akron L	Yankton L	Sterling L	Yankton W
Kirksville L	La. Inst. L	Kirksville W	Sterling W
Otterbein W	Kirksville W	Kalamazoo L	Kirksville L
Wake Forest W	Transy. L	Wake Forest L	Kalamazoo L
Sterling L	Wake Forest W	T. C. U. W	Wake Forest W
West. State, Colo. L	Akron W	West. State L	T. C. U. W
Kalamazoo W	West. State L	Hastings W	West. State L
Morningside W	Otterbein W	Morningside W	Hastings W
Texas Christian U. L	Morningside L	La. Inst. L	Morningside L
Simpson L	Sterling L	Simpson W	La. Inst. L
Hastings W	Simpson W	Transy. L	Simpson W
North Central W	Kalamazoo L	No. Central L	Transy. L
La. Institute L	No. Central W	Akron W	No. Central W
Ill. State Nor. U. L	Okla. Bap. L	I. S. N. U. W	Hard. Sim. L
Marietta W	I. S. N. U. W	Durant L	I. S. N. U. W
Gustavus Adolphus W	Pittsburg W	Gus. Adolph. W	Durant W
Hardin Simmons L	Gus. Adolph. L	Chadron L	Gus. Adolph. L
Monmouth L	San Marcos W	Monmouth W	Chadron W
Durant W	Monmouth L	Baker L	Monmouth L
Johnson City W	Marietta L	John C. L	Baker L
Chadron L	John C. W	Okla. Bap. W	John C. W
Upper Iowa L	Hard. Sim. L	Upper Iowa L	Okla. Bap. L
Baker W	Upper Iowa W	Pittsburg W	Upper Iowa W
Aberdeen W	Durant W	Aberdeen W	Pittsburg W
Okla. Baptist L	Aberdeen L	San Marcos L	Aberdeen L
Concordia L	Chadron W	Concordia W	San Marcos W
Pittsburg W	Concordia L	Marietta L	Concordia L

MEN'S DEBATE

(continued)

Round 5

Round 6

Round 7

Round 8

Eureka W	Mich. State . . L	Eureka W	River Falls . . L
Kan. Wesleyan . . . L	Eureka W	Doane L	Eureka W
Central, Iowa L	Lenoir Rhyne L	Cen., Iowa . . W	Kan. Wes. . . . L
Col. of Pacific . . . W	Cen., Ia. . . . W	Mich. State . . L	Cen., Iowa . . W
Central, Mo. W	Ada W	Cen., Mo. . . . W	Pacific W
Doane L	Cen., Mo. . . . L	Lenoir Rhyne L	Cen., Mo. . . . L
Miss. State L	East Texas . . W	Miss. State . . W	Doane W
Mich. State W	Miss. State . . L	S. W. Texas . . L	Miss. State . . L
Heidelberg W	Heidelberg . . L	Heidelberg . . W	Mich. State . . W
Lenoir Rhyne L	Dak. Wes. . . . W	East Texas . . L	Heidelberg . . L
Millsaps W	La. Inst. . . . W	Millsaps L	Sterling L
Kalamazoo L	Millsaps L	Hastings W	Millsaps W
Yankton L	Transy. L	Yankton W	Kalamazoo . . L
Texas Christian U. . W	Yankton W	La. Inst. . . . L	Yankton W
Kirksville W	Akron L	Kirksville . . . W	T. C. U. L
Hastings L	Kirksville . . . W	Transy. L	Kirksville . . . W
Wake Forest W	Otterbein . . . W	Wake Forest W	Hastings W
La. Inst. L	Wake Forest . L	Akron L	Wake Forest . L
West. State, Colo. . L	Sterling W	West. State . . L	La. Inst. L
Transylvania W	West. State . . L	Otterbein . . . W	West. State . . W
Morningside W	Kalamazoo . . L	Morningside . . W	Transy. L
Akron L	Morningside . W	Sterling L	Morningside . W
Simpson L	T. C. U. W	Simpson L	Akron W
Otterbein W	Simpson L	Kalamazoo . . . W	Simpson L
North Central W	Hastings W	No. Central . . W	Otterbein W
Sterling L	No. Cen. L	T. C. U. L	No. Central . . L
Ill. State Nor. U. . . L	San Marcos . . W	I. S. N. U. . . . L	Chadron W
Maryville W	I. S. N. U. . . . L	Pittsburg . . . W	I. S. N. U. . . . L
Gustavus Adolphus . L	Marietta L	Gus. Adolph. L	Baker L
Okla. Baptist W	Gus. Adolph. W	San Marcos . . W	Gus. Adolph. W
Monmouth L	Hard. Sim. . . . L	Monmouth . . . W	Okla. Bap. . . . L
Pittsburg W	Monmouth . . . W	Marietta L	Monmouth . . . W
Johnson City W	S. W. Texas . . W	John. City . . . W	Pittsburg W
San Marcos L	John. City . . . L	Hard. Sim. . . . L	John. City . . . L
Upper Iowa W	Chadron L	Upper Iowa . . W	San Marcos . . L
Marietta L	Upper Ia. . . . W	Durant L	Upper Iowa . . W
Aberdeen W	Baker L	Aberdeen L	Marietta W
Hardin Simmons . . . L	Aberdeen W	Chadron W	Aberdeen L
Concordia W	Okla. Bap. . . . L	Concordia . . . L	Hard. Sim. . . . L
Tulsa L	Concordia . . . W	Baker W	Concordia . . . W

MEN'S DEBATE

(continued)

Round 1	Round 2	Round 3	Round 4
Sioux Falls L	Bethel L	Sioux Falls . W	Sam Hous. . . L
Fort Hays W	Sioux Falls . W	Kearney . . . L	Sioux Falls . W
Augustana, Ill. . . . W	Bowl. Green . W	Aug., Ill. . . . W	Kearney . . . L
Sam Houston L	Aug., Ill. . . . L	Kent L	Aug., Ill. . . . W
Western Union W	Edmond W	West. U. L	Kent W
Kearney L	West. U. L	No. Texas . . . W	West. U. L
Missouri Valley . . . L	Fort Hays . . . L	Mo. Valley . . . W	No. Texas . . . W
Kent State W	Mo. Valley . . . W	Bethel L	Mo. Valley . . . L
Macomb L	Sam Houston . L	Macomb L	Bethel W
North Texas W	Macomb W	Bowl. Green . W	Macomb L
Cape Girardeau . . . L	Kent W	Cape G. L	Tulsa W
Bowling Green W	Cape G. L	So. Kan. W	Cape G. L
Luther L	No. Texas . . . W	Luther L	So. Kan. L
Edmond W	Luther L	Sam. Hous. . . W	Luther W
S. D. State L	Mary. Tenn. . . L	S. D. State . . . L	S. W. Texas . . L
S. W. Kan. W	S. D. State . . . W	Edmond W	S. D. State . . . W
Colby L	Tulsa L	Colby L	Stetson W
S. W. Texas W	Colby W	Carroll W	Colby L
St. Olaf L	River Falls . . L	St. Olaf W	Edmond L
Maryville, Tenn. . . . W	St. Olaf W	Fort Hays . . . L	St. Olaf W
McKendree L	So. Kan. W	McKendree . . . L	
Tulsa W	McKendree . . . L	Caltec W	
DeKalb L	S. W. Texas . . L	DeKalb L	Ada L
River Falls W	DeKalb W	East Texas . . . W	DeKalb W
Maryville Teach. . . Out	Baker Bye	Idaho L	
San Marcos Bye	Kearney Bye	River Falls . . . W	
Madison Out		Mary. Tenn. . . W	
Bethel Bye		Hard. Sim. . . . L	

MEN'S DEBATE

(continued)

Round 5	Round 6	Round 7	Round 8
Sioux Falls L	Edmond L	Sioux Falls W	Kent W
North Texas W	Sioux Falls W	Bowl. Green L	Sioux Falls L
Augustana, Ill. W	Fort Hays L	Aug., Ill. W	No. Texas W
Bethel L	Aug., Ill. W	Edmond L	Aug., Ill. L
Western Union W	Sam. Hous. W	West. U. W	Bethel L
Bowling Green L	West. U. L	Fort Hays L	West. U. W
Missouri Valley L	Kearney W	Mo. Valley L	Bowl. Green W
Edmond W	Mo. Valley L	Sam. Hous. W	Mo. Valley L
Macomb L	Kent L	Macomb L	Tulsa L
Fort Hays W	Macomb W	Kearney W	Macomb W
Cape Girardeau L	Bethel W	Cape G. L	Sam Hous. L
Kearney W	Cape G. L	No. Texas W	Cape G. W
Luther L	Bowl. Green L	Luther L	Kearney W
Kent State W	Luther W	Bethel W	Luther L
S. D. State W	River Falls L	S. D. State L	Fort Hays L
Baker L	S. D. State W	Tulsa W	S. D. State W
Colby W	Colby L	River Falls L	Bethany W
Durant L	So. Kan. W	Colby W	Colby L
St. Olaf W	Durant L	St. Olaf W	Ada W
S. W. Texas L	St. Olaf W	So. Kan. L	So. Kan. L
McKendree L	Pittsburg W	McKendree L	McKendree L
River Falls W	McKendree L	Okla. Bap. W	St. Olaf W
DeKalb L	Tulsa W	DeKalb W	N. C. State L
Sam Houston W	DeKalb L	Mary. Tenn. L	DeKalb W
S. W., Kansas W	No. Texas L	Kent L	Mary. Tenn. W
Chadron L	Mary. Tenn. W	Ada W	Centre L
	N. C. State L		Stetson L
	Pacific W		Durant W

MEN'S DEBATE

(continued)

Quarter Finals

Pittsburg W	Redlands . . W	Aug., S. D. . W	Baylor . . . W
North Texas L	Hastings . . . L	St. Olaf . . . L	S. D. Wes. . L

Semi-Finals

Baylor L	Redlands W
Augustana, S. D. . . W	Pittsburg L

Finals

Augustana, S. D. . . L
Redlands W

The following fifteen teams, which won six of their first eight rounds of debate, received a rating of Excellent.

Augustana, Ill.	Northeast Missouri State	Nebraska Wesleyan
Bethany	Teachers	Otterbein
California Institute of	Louisiana College	College of St. Thomas
Technology	Maryville	Upper Iowa
College of the Pacific	Morningside	Yankton
Iowa Wesleyan		Sioux Falls

The following ten teams, which won at least seven of the first eight rounds of debate, received a rating of Superior. Pittsburg Teachers of Kansas was the only team which won all eight rounds. The eight teams with the best ratings on the judges' ballots were placed in round nine.

Kansas State Teachers, Pittsburg	Hastings
Augustana, South Dakota	St. Olaf
Baylor	Dakota Wesleyan
Carroll	Redlands
Eureka	North Texas State Teachers

The Student Assembly

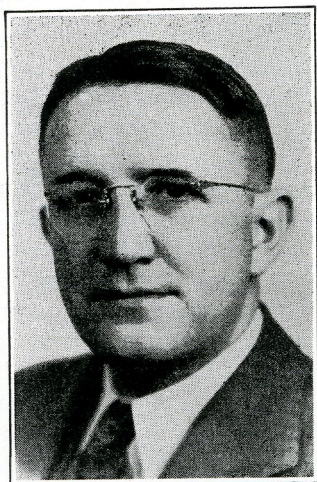
The Unicameral Legislative Assembly met according to schedule during the Convention. Participants were very enthusiastic throughout the whole session and voted at the close to set up a "continuation committee" to promote continuity between the 1940 and the 1942 Student Congress.

A retrospective survey of the preliminary organization will give a clearer exposition of the event itself. Under the presidency of Dr. S. R. Toussaint the first Student Congress was set up at Topeka in 1938; it was organized by Dr. H. B. Summers of Kansas State, assisted by Mr. Geo. R. R. Pflaum, and Mr. Warren G. Keith. With an ideal setting and a competent organization, the first P. K. D. Student Congress was an impressive success. At the close of the convention, however, the question as to whether another should be held was left unanswered.

As soon as Knoxville was selected as the convention city, it was decided, owing to lack of proper facilities for a bicameral assembly, to conduct a unicameral legislative body. Warren G. Keith, Head of the Department of History in Winthrop College, was entrusted with the duties of organization. Mr. G. S. Fulbright of the Speech Department of Washburn College was appointed expert legislative advisor to the body. The management at Winthrop early in September, 1939, started a stream of mimeographed publicity to all coaches and special instructions to governors concerning the membership of the body.

A "Blue Sheet" containing the constitution of the Unicameral Assembly was sent to all elected members. Members were given every opportunity to make suggestions and recommendations, to send in bills, and to express their opinions through a weekly bulletin.

The constitutional basis of the Assembly was unique in that pro-



DR. WARREN KEITH

Prof. Fulbright of Washburn and Dr. Keith directed the student legislative assembly.

vision was made for the election of a president as well as a speaker and a speaker pro-tem. The president, it was planned, should be a leader of the Assembly, helping to guide it in every way possible, advising committees and bolstering up the strength of the party that had elected him. The speaker was left to act as an impartial chairman of the body in session.

As the assembly developed in form, the highest expectations of the management were more than realized. One must notice the quality of the membership. First of all the body was composed of the finest students our country affords. To anyone who has had years of experience in handling "run-of-the-mine" students it is indeed refreshing to come in contact with some eighty personalities the pick of their campuses. One met with the most intelligent responses. Second, the sterling character of the young men and young women who composed the body was readily evident. Each went about his business quite seriously; attended the party caucus, went to late sessions, and approached his work as a member of a committee with zeal.

As to the organization, a whole journal could be written about the activities of these intellectuals. Three parties were formed: Republicans, Democrats, and Independents. An impartial non-member from Winthrop assisted each caucus to organize and then retired. Immediately "politicizing" started. Some criticism was heard as to the time lost in party caucus; but some of the most valuable lessons learned by the members were realized during the first twenty-four hours in the "go-and-come" of party groups.

The first meeting was presided over by the temporary president Mildred Lawrimore of Winthrop. Mr. Lamont of Maryville was chaplain. Pauline Lay, later parliamentarian, read a message from President Roosevelt to the Assembly. Party groups were not ready to express themselves, consequently a motion to adjourn was snapped upon by all groups.

The wisdom of placing a second elective office before the body was clearly seen when the office of president was used as a trading basis for support in the speaker's race.

In the election for president Eugene Worrell, Independent, of Wake Forest, defeated Lorana Moomaw, Democrat, of Farmville, by nine votes. In the speaker's race Bake Young, Independent, of Idaho, defeated M. Freeman of Hays State. Mr. Stowell of Hays State was elected speaker pro-tem.

Immediately after elections were over the Assembly sought to express itself in various pieces of legislation. But it took until Wednesday noon before President Worrell was able to get the reins of his party turned over to him. For a time the body wallowed around

leaderless. The Independents had too many ambitious personalities who, though they had assisted in electing him President, were not quite ready to allow him to assert himself. However, after many feints on the part of Democrats and Republicans and even talk of revolt in the Independents, Worrell took charge and rode in the seat of driver until final adjournment.

It was, indeed, fortunate for the Assembly that it chose as Speaker a person of the type of Bake Young. He has the character that management so often looks for and fails to find. Mr. Young was never arrogant or impetuous in handling the details of his office. He presided in a slow and deliberate way, a manner that won the confidence of the whole membership. He never set himself up as a person of final authority; it was easy for him to say: "The Chair is in doubt. Will someone please inform the Chair." He was considerate of the wishes of the entire membership. On occasion he stepped down and turned the gavel over to the pro-tem, merely to allow him to share the honors of the office.

Mr. Fulbright of Washburn assisted in every way to help the body to express itself. He labored over the wordings of bills. Then, too, he assisted his own student, Mr. Robinson, the clerk, to perform the arduous duties of that position.

Finally, the membership—from Frances Anderson of Linfield to Margaret Yearout of Emporia—(it just happens that the first and last are women)—carried out their parts most competently. Due praise must be given to the extempore speakers and orators who carried on in both places. Particularly one must drop a word of commendation to Eugene Worrell who could steer his way through the political maze and at the same time be national orator. Mention should be made of the leadership demonstrated by Fine, Schmit, Osborne, Pew, and Davis.

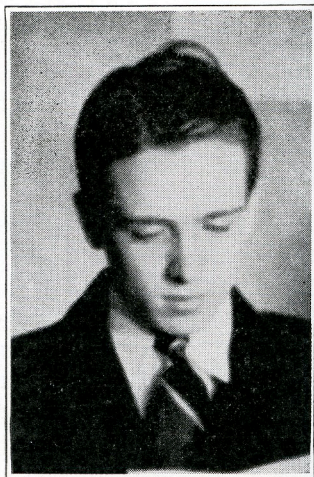
Among the many bills acted upon none received the attention paid to the resolution against a third term. That measure alone called forth a headline streamer across the page with a picture of Schmit and Young shaking hands. Other measures were then considered: to purchase the West Indies, to help Finland; to make N. Y. A. permanent; to prevent our entry into war, etc., etc.

Finally, the management suggests that the Assembly next time be held in a place large enough to accommodate all who want to come so that there will be no keeping anyone away because of provincial boundaries; that the Assembly be composed of two houses; that a president be elected to preside over both houses as a sort of liaison official; that each chapter send students just as intelligent as were sent this time.

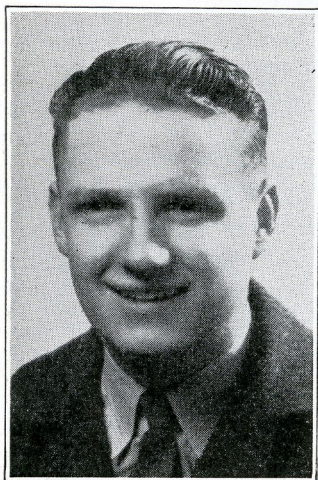
"The most interesting feature of the tournament, as far as I was concerned, was the student assembly. For there I believe the 'leaders of tomorrow' voiced their honest convictions.

"Student opinion in America is just beginning to come into its own. Gatherings in the future, where student leaders carry on intelligent discussions of the vital issues facing our country, will do much to add impetus to this neglected integral factor in American democracy. Through its student assembly, I think Pi Kappa Delta is accomplishing a worthy service for the students of the United States and for the United States itself." — TUCKER IRVIN, Presbyterian, South Carolina Beta. Student Representative on the National Council.

Mr. Irvin is an eighteen year old sophomore from Georgia. He is editor of his college paper, *The Blue Stocking*. He is a history major. He plans to study law.



TUCKER IRVIN
South Carolina Beta



BAKE YOUNG
College of Idaho

"I think the Student Assembly was a grand success. Besides furnishing an opportunity for youth to acquaint itself with the problems of the nation and legislative procedure, it made possible the formation of many lasting friendships. We accomplished a highly desired end—passing constructive, progressive legislation. I believe the Student Assembly should be made a permanent feature of the Pi Kappa Delta National Convention."—BAKE YOUNG.

Speaker of the Student Assembly
Nineteen year old sophomore
economics major. Plans to enter
business or law.

STUDENT NIGHT AT THE CONVENTION

All thought of debates, orations and extempore speeches was put aside Wednesday noon as the large caravan of cars, buses, and wreckers made the twenty-mile circle trip into the Smoky Mountains. Led by Courtesy Patrol cars, a train of three buses, over ninety cars, and four wreckers wound its way to the top of Clingman's Dome, making stops to view the lovely foliage-covered slopes with the mountain laurel just in bud, arriving together at the mountain resort of Gatlinburg at five o'clock. The following hour was spent in visiting the shops with their display of handicraft done by the mountaineers. Many students enjoyed their first snow fights while others made short climbs around the mountain-side.

Dinner was served by the hotels and tea rooms, after which the Student-Night program was held. The winning stunt was "The Parade of the Wooden Soldiers," a dance presented by Guy Oliver, Jr., and Paul Hunsinger of North Central College. The program presented in the gymnasium of the Pi Phi Vocational School at Gatlinburg, was supervised by Betty Warren, student representative, assisted by Jack Zerwas of Maryville. Other numbers given were: "Musical Cigar", by Gordon Carlson of South Dakota State; "Little Red Riding Paygama", Carl Burness, Redlands; "Homework", Virginia Jeremiah of Otterbein; a quartet consisting of Sene Carlile, Allah Mitchem, Bill Stowell, Bob Freeman, and accompanist Wanda Mae Scott, all of Ft. Hays; "History of the West", by Lois Jo Andis, Harriet Elhoff, Melba Nelson and Robert Hexom of East Teachers College, South Dakota; "Cows and Corn" by Alice Sayer, Elmerine Sherman, Ruby Arnold, Jim Angell, and Larry Wright of Simpson College; impersonations by Bob Forsythe of St. Olaf; and a piano solo by Bob Shaw of Carroll College.

The "Sunny South" in its endeavor to make the visitors feel at home staged an Easter snow storm that was equal to anything the Dakotas, Minnesota or Colorado might have produced at that time of year.

Several delegations found it necessary to abandon their cars and take the train. President Forrest H. Rose's car with the Cape Girardeau delegation, driven by Mrs. Rose, had to be deserted at Cookeville. This group was just one of the many snowbound delegations. One car was pulled out of the barrow pit five times crossing the Cumberland Pass. The three boys from Oklahoma City University had the misfortune to skid and over turn. No one was seriously injured and the car was driven on into Knoxville. One boy suffered from shock, however, and returned home on Tuesday.

EDITOR'S PERSONAL PAGE

Where inconsistencies cease from troubling and logic is at rest

“Good morning, have you had your grits?”

A glance at the geographical distribution of the opponents any one institution met in the debate tournament gives a good idea of the cosmopolitan nature of a Pi Kappa Delta national convention. For example, at nine thirty Tuesday morning the women's team of Colorado State College of Education was debating the Gilstrap Twins from the College of Puget Sound in Washington. At the same hour the men's team from Colorado was debating John B. Stetson University from Florida.

A CHALLENGE TO THE UNWASHED

We hesitate to stir up religious intolerance, but something must be done about these Baptists. Twelve awards were made for first and second places in the tournaments at Knoxville. Seven of them went to Baptist institutions, two each to Baylor, Redlands, and Linfield, and another to Wake Forest. The rest of us, the Methodists, Lutherans, Presbyterians, and the ungodly could garner only five. At the next tournament we should select our judges from among the unwashed.

The convention was not without its value. One undergraduate who returned from Knoxville reported that she had met a very handsome junior from the University of Tennessee who could scratch gopher matches on his shoes.

A hint from the editor of the FORENSIC to ambitious members of Pi Kappa Delta: Excerpt from a letter received from Tucker Irvin, newly elected student representative on the National Council: “I should like to thank you for publishing my two articles. No doubt they had something to do with my election as student representative. I deeply appreciate your using them.” The FORENSIC caters to the student reader and is always pleased to receive contributions from students.