

# THE FORENSIC

OF PI KAPPA DELTA

GEORGE McCARTY, Editor  
G. W. FINLEY, Business Manager

Issued four times a year, in October, January, March and May. Subscription price per year, 50c. Subscription free to all active members. Entered as second-class matter, October, 1928, at the post office at Fort Collins, Colorado, under Act of August 24, 1912.

Office of Publication: Colorado Printing Company, Fort Collins, Colo. Address all copy to George McCarty, Editor Pi Kappa Delta Forensic, State College Station, Brookings, South Dakota.

SERIES 15

JANUARY, 1930

NUMBER 3

## RULES FOR CONVENTION CONTESTS

By National President W. H. VEATCH

### ORATORY

These rules shall govern both the Men's Oratorical Contest and the Women's Oratorical Contest.

1. **CONTESTANTS.** Each Pi Kappa Delta Chapter may enter an orator in each contest, who shall be a bona fide undergraduate student of the college which he or she represents.

2. **ENTRANCE FEE.** Each chapter shall pay an entrance fee of one dollar for each orator entered.

3. **ORATIONS.** Orations shall not exceed 1500 words in length, and shall not contain more than 150 words of quotation. All quotations shall be indicated by the proper marks. Each contestant shall send a typewritten copy of his oration to the National Secretary together with the entrance fee of one dollar, not later than March 12, 1930. The National Secretary shall examine each oration to determine its eligibility under this rule.

4. **PRELIMINARY CONTESTS.** Preliminary contests shall be held simultaneously, the number of such contests being determined by the number of contestants entered, it being provided that not more than nine speak-

ers shall appear on one program. The National Council shall determine the arrangement of schools in the preliminary contests.

5. **FINAL CONTESTS.** The number of speakers appearing in the final contests shall be determined by the National Council in accordance with the number of preliminary contests held.

6. **TIME OF CONTESTS.** The time for holding each contest shall be determined by the National Council and shall be announced in the printed program of the convention.

7. **JUDGES.** Each contest shall be decided by three or more disinterested judges to be chosen by the National Council.

8. **METHOD OF JUDGING.** Judges shall mark on general excellency, including thought, composition and delivery, giving each orator a grade between the percents of 75 and 100. No judge shall give any two orators the same grade. Members of the National Council shall tabulate the ballots and determine the results. The markings of each judge shall be ranked 1, 2, 3, etc. Any orator ranked first by a majority of the judges shall be awarded first place. If no orator is thus ranked first, all the rankings of each orator shall be totaled and the orator having the lowest sum of ranks shall be awarded first and the orator having the next lowest sum of ranks shall be awarded second and the orator having the next lowest sum of ranks shall be awarded third, etc. In case of a tie, the rankings shall be made again with the contestants not concerned in the tie omitted, and thus the tie broken.

9. **PRIZES.** Medals shall be awarded to the winners of first, second and third places in the final contest. The college represented by the winner of first place shall be awarded a silver trophy cup.

All arrangements for the contests not covered by the above rules shall be in the hands of the National Council.

### EXTEMPORANEOUS SPEAKING

These rules shall govern both the Men's Extempore Speaking Contest and the Women's Extempore Speaking Contest.

1. **CONTESTANTS.** Each Pi Kappa Delta chapter may enter a contestant in each contest, who shall be a bona fide undergraduate student of the college he or she represents.

2. **ENTRANCE FEE.** Each chapter shall pay an entrance fee of one dollar for each contestant entered. Notice of intention to enter the contests, together with the fees, shall be sent to the National Secretary not later than March 12, 1930.

3. **SUBJECTS.** At least two months before the Convention the National Council shall announce a general subject for each contest.

4. **SUB-TOPICS.** A disinterested party chosen by the National Council shall divide each general subject into ten sub-topics. These sub-topics shall be kept sealed until the time for the contests. One hour before the beginning of each contest the contestants shall by lot select sub-topics. Each speaker shall confine his discussion to the sub-topic chosen.

5. **PRELIMINARY CONTESTS.** Preliminary contests shall be held simultaneously, the number of such contests being determined by the number of contestants entered, it being provided that not more than eight speakers shall appear on one program. The National Council shall determine the arrangement of the schools in the preliminary contests. No contestant shall be permitted to hear the other speakers in any preliminary contest.

6. **FINAL CONTESTS.** The number of speakers in the final contests shall be determined by the National Council in accordance with the number of preliminary contests held. No contestant shall be permitted to speak in the final contest upon the same topics upon which he spoke in a preliminary contest.

7. **TIME OF CONTESTS.** The time for holding each contest shall be determined by the National Council and shall be announced in the printed program of the convention.

8. **LENGTH OF SPEECHES.** Speeches shall not be less than eight minutes in length nor more than ten minutes in length. Each speaker shall be given a warning by the time-keeper at the expiration of eight minutes.

9. **NOTES AND QUOTED MATTER.** No speaker shall be permitted to take upon the platform more than one hundred words of notes. No speaker shall use more than two hundred words of quoted matter. Quotations may be either read or memorized.

10. **JUDGES.** Each contest shall be decided by three or more disinterested judges chosen by the National Council and in accordance with the rules for judging prescribed for the oratorical contests.

11. **PRIZES.** Prizes similar to the ones given in the oratorical contests shall be awarded to the winners of the first three places in each extempore contest and to the schools from which the winners of first place come.

As a part of the final extempore speaking contest, each speaker, as the contest proceeds, shall prepare a question to ask of each opponent speaker on the topic discussed by that opponent speaker. In turn, each speaker shall answer a question on his or her topic asked by some opponent. Each speaker shall ask and answer but one question. A member of the National Council shall, before the time of the contest, determine the order of asking questions and giving answers. This order is to be kept secret from the contestants. Each speaker shall be limited to three minutes in which to answer the question.

All arrangements for the contests not covered by the above rules shall be in the hands of the National Council.

## DEBATE

These rules shall govern both the Men's Debating Tournament and the Women's Debating Tournament.

1. **CONTESTANTS.** Each Pi Kappa Delta Chapter may enter one team in each contest. The members of these teams shall be bona fide undergraduate students of the colleges they represent.

2. **ENTRANCE FEE.** Each chapter shall pay an entrance fee of one dollar for each team entered. Notice of intention to enter the contest, together with the fee, shall be sent to the National Secretary not later than March 12, 1930.

3. **QUESTION.** The official Pi Kappa Delta question shall be used in all the debates.

4. **SPEECHES.** Each debater shall have two speeches, one of ten minutes and one of five minutes. The affirmative shall speak first in the first speeches and the negative first in the second speeches.

5. **ELIMINATION.** All teams will take part in the first five rounds of debate. After the fifth round all teams having two or more defeats will be eliminated. No results will be announced until time for the sixth round. The arrangement of the debates in all of the contests shall be in charge of the National Council.

6. **SIDES.** Each team must debate on both sides of the question. After the first series the National Council shall attempt, as far as possible, to schedule each team in each succeeding debate for the side of the question opposite to the one it last debated.

7. **PERSONNEL.** The personnel of a team may be changed at will between rounds of the debate tournament.

8. **JUDGES.** Each debate shall be judged by a competent judge or judges selected by the National Council.

9. **SCOUTING.** The tournament will be open. Debaters are not prohibited from attending other debates during the tournament.

10. **PRIZES.** Prizes similar to the ones given in the Oratorical contest will be awarded to the members of the winning teams of the first three places in each debating tournament and to the schools represented by the winners of first place in each debating tournament.

All arrangements for the tournaments not governed by the above rules shall be in the hands of the National Council.

# WESTERN TEACHERS OF SPEECH ORGANIZE

**First Annual Convention, Held in San Francisco November 29 and 30, 1929, Draws Large Attendance—  
Association Open to University, College, Secondary- and Elementary-School Teachers**

(By W. ARTHUR CABLE, University of Arizona.)

**M**ORE than one hundred teachers and prospective teachers of speech from the Coast and Rocky Mountain states attended the First Annual Convention of Western Teachers of Speech, held at the San Francisco State Teachers College on Friday and Saturday, November 29 and 30, 1929. This is by far the most significant and far-reaching movement in the field ever attempted west of the Mississippi river. Delegates came from as far as a thousand miles to the southeast, twelve hundred miles to the north, and a thousand miles east from eastern Colorado.

Most of those in attendance were college and university teachers, as this convention concerned itself mainly with that field. High-school and elementary-school teachers were welcomed, however, and a number of them were present.

Sessions were held covering all the main divisions of the speech curriculum: dramatics, oral interpretation, original speaking, the various phases of speech science, and the teaching of speech. Administration and curriculum, the basic course in speech, oral reading and interpretation, story telling, acting, directing, and stage-craft, public speaking, argumentation and debate, the psychology of speech, voice science, para-vocal anatomy and physiology, phonetics, functional and organic speech correction, the training of teachers for the

public schools and colleges, and the history of the teaching of speech were all touched upon in this convention.

The entire convention was organized around the central theme, "Cultural and Scientific Speech Education Today." One of the incidental aims in the preparation of the program, however, was that of showing the analytical structure of the entire field of speech, from a curricular viewpoint.

*The Second Annual Convention of the Western Association is to be held sometime during the autumn of 1930 at a central point.*

The sessions were reported by Mrs. Ludwig Sporleder, Mill Valley, California, for Dr. Calcia, University of Hamburg, Dr. Gutzmann, University of Berlin, and Dr. Froschels, University of Vienna, specialists in scientific phases of speech.

In addition to the regular sessions, honorary dramatic and forensic fraternity luncheons were held on Friday noon. Special dinners for teachers of speech correction and departmental administrators were held on Friday evening, and the Convention Dinner on Saturday noon, with entertainment features following. Extensive displays of dramatics and speech laboratory equipment were arranged by committees headed by Miss Jessie D. Casebolt, San Francisco State Teachers College, and Earl W. Wells, Oregon State College, respectively.

The Max Factor Make-up Studios offered a \$25.00 make-up kit as a prize for the best make-up of the character of Mrs. Malaprop. The contest was won by Chester J. Myers, Utah State Agricultural College, and Mrs. Bertha Jackson McKay, California Christian College, the latter being the subject for the character make-up.

At the business session on Saturday morning, a constitution was adopted opening membership to elementary, high-school, college, and university teachers in any phase of speech, in all types of institutions, public and private.

Officers elected for the year 1929-1930 were: President, W. Arthur Cable, University of Arizona; vice-president, Frederick W. Orr, University of Washington; secretary-treasurer, Earl W. Wells, Oregon State College.

The annual membership fee is \$1.50. A plan of joint membership with the National Association of Teachers of Speech, and including subscription to The Quarterly Journal of Speech, had previously been effected by arrangement with the Advisory Council of the National Association. The joint membership fee is \$3.50. Either the single or joint fee should be sent to Earl W. Wells, secretary-treasurer, with a note indicating whether the Journal subscription is new or a renewal.

The Second Annual Convention of the Western Association is to be held sometime during the autumn of 1930 at a central point. A much larger number of teachers is expected at that time, and an adequate and profitable program is promised them. The needs of secondary-school and elementary-school teachers will receive as careful attention as those of college and university circles. Teachers should plan now to attend the 1930 Convention and share in its benefits.

A number of telegrams of greeting were received by the Convention from mid-western and eastern teachers of speech, among them being one from Dr. Andrew Thomas Weaver, past president of the National Association, which characterized the western convention and association as "the most significant forward step since the founding of our national organization. You have launched an enterprise which will bring in a new day throughout the great region which you represent."

Other telegrams or messages of greeting were received from Frank M. Rarig, President of the National Association of Teachers of Speech; H. L.

Ewbank, executive secretary of the National Association; Howard H. Higgins, educational editor of *The Platform World*; Rupert L. Cortright, chairman of the committee for the Advancement of Speech Training in Secondary Schools; Edwin H. Paget, director of public relations for the National Association; John A. McGee, editor of *The Indiana Journal of Speech*; and Dale W. Stump, grand secretary of Phi Delta Gamma, National Professional Forensic fraternity.

The opportunity is vast for the development of the influence of speech education, and for making it felt to a hitherto unparalleled degree, within the ranks of teachers of speech, in educational circles, and in society generally throughout the west.

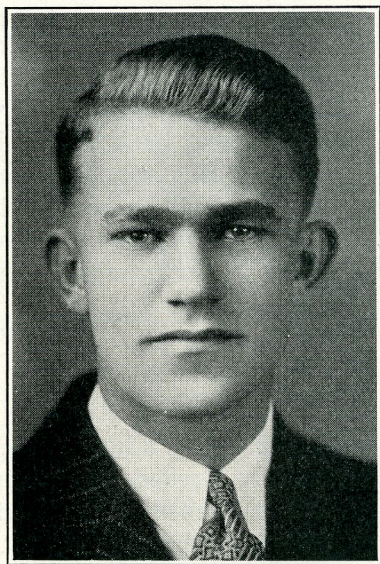
---

## KANSAS MU HAS RHODES SCHOLAR

New honors have come to Kansas Mu Chapter of Pi Kappa Delta thru the selection of Mr. Emory Lindquist as Rhodes scholar from Kansas.

Mr. Lindquist, during his career at Bethany, has not only been a leader in scholastic attainments, but holds the record of the state championship in tennis, both singles and doubles, is a member of the Bethany band, Blue Dozen, symphony orchestra, has served four years as president of his class, one year as president of the Kansas Mu Chapter, and has been a four-year representative to the student council of which he is now president.

In addition to these honors, he was a member of the debate team which last year won the State Debating League of Kansas. Mr. Lindquist is an outstanding debater, combining the best in speaking ability with a brilliant intellect. Mr. Lindquist was unable to participate in the inter-state debate tournament, but will represent Bethany in the debating league next semester and will finish his inter-collegiate debating career at the National Pi Kappa Delta convention at Wichita.



---

## EDITOR McCARTY SPEAKS FOR MINNESOTA U.

Prof. George McCarty, Editor of the Forensic and head of the Department of Speech at South Dakota State, will fill a series of speaking engagements for the Lyceum Department of the University of Minnesota during the present college year. Mr. McCarty spent one chautauqua season with Redpath as lecturer and as manager and member of his play company.

## TOPICS FOR EXTEMPORE SPEAKING CONTESTS

Pi Kappa Delta believes in and practices practical democracy. The national debate question is selected each year, not by representatives of the local chapters, but by vote of the chapters themselves. This year even the extempore speaking questions have been selected in this same way.

Early in the fall a call was sent out to all the chapters asking for possible topics. This call resulted in a long list of topics covering a wide range of subjects. This list was sent back to the chapters for another vote. The result of this vote is given below. The topics that won first place will be used in the national contests at the convention. They are live, up-to-date subjects and should insure us an interesting and worthwhile contest.

### Subjects

Points	Men	Place
16	College Athletics -----	1st
12	New alignment of political parties ----	2nd
11	Needed changes in college curricula ----	3rd
10	Freedom and modern youth -----	4th &
10	Public utilities -----	5th

### Women

21	The future of the American home ----	1st
19	Woman's place in politics -----	2nd
15	Freedom and modern youth -----	3rd
13	Women in industry -----	4th
12	Installment buying -----	5th

The topics for the National Extempore Speaking Contests, then, are, "College Athletics," for men, and "The Future of the American Home," for women.

## CAN YOU BEAT IT?

**L**AST year under the heading, "Can You Beat It?" we referred to the forensic achievement of Nebraska Wesleyan University.

The coach of forensics at Nebraska Wesleyan, Miss Enid Miller, with an enthusiasm characteristic of her student days as a successful participant in forensics at Northwestern University, wrote an article which appeared in "The Wesleyan" recently, issuing a challenge to her forensic proteges as follows:

### "Can You Beat It?"

"The Past is Past. The future may take care of itself, but Nineteen Hundred Twenty-nine-Thirty is Now.

"Wesleyan men who want to debate, there is a State Championship challenging your attention and we need new debaters—we welcome new debaters as we have seldom welcomed them before.

"Wesleyan Varsity, there is a National Championship challenging your attention and the opportunity for a National Championship comes only once in every two years.

"Wesleyan Speakers, Wesleyan men have won the State Old Line Oratorical for the past five years. Is that record to be broken? If we can win the State Championship this year it will mean that the Interstate Oratorical will be held in our University. That chance comes to us once in five years.

"Last year the editor of "The Forensic" wrote an article concerning Wesleyan orators. He issued a challenge to the 130 other colleges in Pi Kappa Delta, under the heading, 'Can You Beat It?' Now I am not interested in the answer to that challenge. I don't care so much whether or not other colleges can beat our record. My challenge is—can WE beat it?

"Can't we beat it?

The Past cannot answer that challenge.

The Future cannot answer that challenge.

"Dear Old Wesleyan." Dear?

"Aid Your Endeavor." Will You?

"Honor Forever." Honor?

Is this just a song? A challenge is out."

Now the "Forensic" editor asks Pi Kappa Delta Land again, "Can you beat it!" We write it as an exclamation, not a question. We have in mind this time the matter of publicity for forensics. Again we turn to Nebraska Wesleyan. In the issue of "The Wesleyan" in which Miss Miller's chal-

lenge appears, the front page of six columns, totaling 92 inches, more than two-thirds of the space is given to forensics. Of the fifteen headlines appearing on the front page, nine concern forensics.

Can you beat it? What of forensic publicity in your college? We suggest you get your local chapter of Pi Kappa Delta together, having collected the issues of your local paper for the fall term and check through to see how much space is devoted to forensics. Note especially how many headlines appear on the front pages.

Ye Editor has been unable to find any articles containing forensic news that is worth passing on to our membership through "The Forensic" in a few of the college papers which come to him each week. In some of these papers, nothing at all has appeared. Worse than that, in the case of some schools, we have received no papers even. Naturally, the questions occur to us: Do these schools have college papers? (The constitution of Pi Kappa Delta requires that member schools send the local paper to the editor of "The Forensic". See the constitution of Pi Kappa Delta.) If you have a college paper, does it ever carry any news concerning forensics? If not, are you holding any forensic contests this year? If not, why membership in Pi Kappa Delta? How did you get that way? We mean—How did you get membership in P. K. D.? There are a good many other schools that are trying very hard to be admitted to Pi Kappa Delta. Why not let some school have your place? Other questions occur which we will not take time to ask.

In prophesying a high degree of continued forensic achievement for Nebraska Wesleyan University, we make no pretense at being a prophet or the son of a prophet. That prophecy is our easiest guess.

In the October "Forensic" we suggested that member schools of Pi Kappa Delta get busy doing something in forensics before criticizing the college paper for failure to carry forensic news. We believe if you deserve space in your local paper, you will get it. You may not get it as soon as you deserve, but sooner or later with continued effort, thinking more of the value of achievement than of the desire for publicity because of that achievement, your efforts will be recognized.

Nebraska Wesleyan University deserves and gets publicity.

Look out for N. W. U. at the national convention at Wichita.

---

## NATIONAL COUNCIL FOR THE PREVENTION OF WAR WISHES TO SERVE PI KAPPA DELTA

The Secretary for The National Council for the Prevention of War, located at 532 17th St., N. W., Washington, D. C., writes as follows:

"We will appreciate your calling the attention of the members of your fraternity to the work of your National Council, telling them that we are a service bureau, and that we shall be glad to help them in any way we can by sending material for their debates."

# CONVENTION CHAIRMAN'S PAGE



—PLEASE TAKE TIME TO READ THIS—

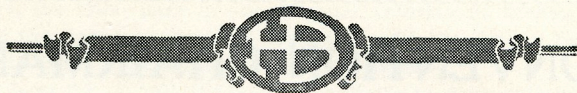
**I**N thinking about the information that may be of greatest interest to you, concerning the Pi Kappa Delta National Homecoming Convention to be held in Wichita, Kansas, March 31 to April 4, it seems that the question of cost always has to be considered first. For that reason, in making the convention plans and arrangements, I have tried to keep that uppermost in my mind and can assure you that I have held the cost down to a minimum.

I am giving you herewith an estimate of what it will cost per person per day.

Hotel .....	\$2.00
Local transportation .....	.25
Convention dinner .....	.75
Other meals will average .....	1.00
	<hr/>
	\$4.00



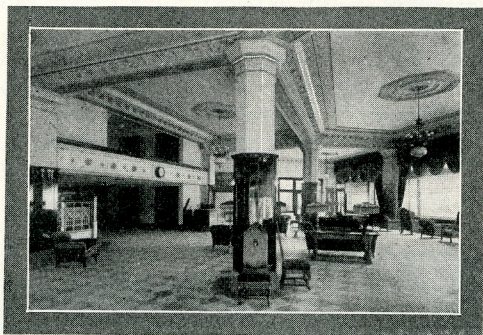
BROADVIEW HOTEL, WICHITA



Allow me to be more explicit.—After long and serious argument with the hotel management, secured a flat rate at \$2.00 per person per night, but if the person does not stay the five nights or for the period of the convention, it will cost \$2.50 per night. A word of explanation concerning this. Remember Estes Park—we were crowded, we were cold, we had to hike from one hotel to another and maybe there were other things that we didn't like, and added to that, we paid a rate a little higher than the present suggested rate. It seemed high, etc., but couldn't be helped and in spite of all the complaint we had a dandy time.

At Tiffin we had a little lower rate than at Estes, but our accommodations were not, at least for some, as satisfactory; but again we had a whale of a good time. I want to try to remove as many possibilities of complaint as possible. But cheer up, there will be plenty to "gripe" about. The Broadview Hotel has agreed to handle 500 of us. We will have beds—not cots,—a bath in every room and although conditions may be a little crowded

we will have an ideal place to live and will practically have the entire hotel to ourselves and all be in one hotel. It will be the place where everything will be going on. You may try if you like, but after a careful survey I am convinced you will not find cheaper or better lodging. The hotel has never made convention rates, they always charge \$2.50 per person per night, but because Geo. Seidhoff, the manager, is such a good scout and is very much interested in college folks



THE LOBBY  
Broadview Hotel

(he always entertains the visiting football teams), he made the special concession and promised, if necessary, to turn away his regular trade to house all of Pi Kappa Delta. To assure a complete attendance for the entire time the \$2.50 per night for part attendance is affixed. Believe me it is fair enough and is no graft.

Every evening at 6:00 the entire convention will take dinner on the roof garden of the hotel. It is a beautiful place. I am positive that you will like it. This dinner will cost us 75c apiece. I have the menus before me at the present time and they promise good things. Seventy-five cents is a very moderate price for dinners like we hope to have.

Then we must remember we will all be together. I don't know if that means much to you but it certainly does to me. — Chapter and college songs and yells and maybe a short speech. It will almost make every evening a banquet.

### Figuring Costs

May I show you how I am figuring costs for the delegation I hope to take to Wichita?

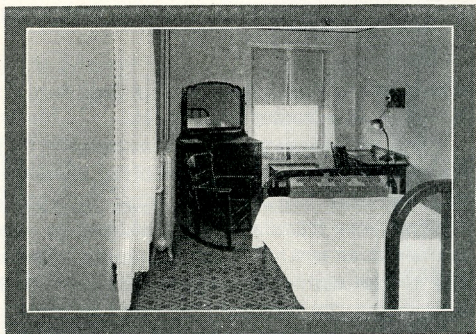
Transportation to Wichita and return (see table on page 362).

Transportation, depot to Hotel Broadview and return (Street Car)	\$ .12	
	(Taxi \$0.90)	
Hotel, six nights -----		12.00
Dinners, four nights (Monday, Tuesday, Wednesday, Thursday) -----		3.00
Banquet, Friday night -----		1.25
Transportation to Wichita University and return for five days -----		1.25
Twelve other meals -----		6.00
		<hr/>
		\$23.62

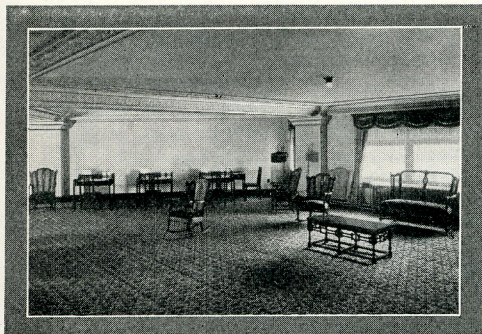
This totals \$23.62 per person for one great, grand, glorious, wonderful week of contests and convention, with fine associations, parties, sightseeing trips and other entertainment thrown in. I challenge any convention city to beat the above prices and at the same time give us quality.

In figuring your costs please remember that we are eliminating the travel expenses for preliminary contests, for instance, like we had from Fort Collins and Greeley to Estes and from Westerville and Berea to Tiffin.

This is the present plan: upon entering the hotel you will register for the convention, plunking down \$4.25 for a registration ticket which will entitle you to the four evening dinners, the banquet, convention registration, sightseeing trips, and the social evening. We will take care of the rest.



TYPICAL BEDROOM  
Broadview Hotel



MEZZANINE FLOOR  
Broadview Hotel

## YOUR FARE TO THE CONVENTION CITY

Below is a list of the chapters and the price for each of a one-way ticket to the convention. Add to this half fare for the trip home and you'll have the price of a round trip ticket.

We are guaranteed fare-and-a-half if we can produce 150 certificates. We shall have four or five hundred delegates, but a good many of the groups that are near Wichita will come by auto or bus. That means that every delegate who travels by train should be sure to get a certificate, whether he can use it or not. If he is not going home over the route he traveled on his way to the convention his certificate will be of no use to him, but he can help secure the reduced rate just the same. Be sure to get a certificate!

It is interesting to compare traveling expenses for this convention with those for the 1928 affair at Tiffin, Ohio. At that time the highest rate was for Washington Alpha, \$91.31; this year it is for the same chapter, \$71.57. In '28 eleven chapters had a fare of over \$50.00; this year there are again eleven who break the half century mark. At that time the average one-way fare was \$29.69; this year it is \$24.72. That means that this convention will cost us some \$2,000.00 less for railroad fare than we paid out in 1928.

Fare from	To Wichita, Kans.
<b>Arkansas</b>	
Alpha and Beta—Henderson Brown and Ouchita Colleges Arkadelphia .....	\$18.81
<b>California</b>	
Alpha—University of Redlands, Redlands .....	54.59
Beta and Epsilon—Occidental College and University of California, Southern Branch, Los Angeles .....	56.36
Gamma—California Institute of Technology, Pasadena.....	56.36
Delta—College of the Pacific, Stockton.....	62.66
<b>Colorado</b>	
Alpha—Colorado Agricultural College, Fort Collins.....	22.01
Beta—Colorado Teachers' College, Greeley.....	21.47
Gamma—Western State College, Gunnison.....	23.37
<b>Connecticut</b>	
Alpha—Connecticut Agricultural College, Storrs.....	61.36
<b>Idaho</b>	
Alpha—College of Idaho, Caldwell .....	52.34
<b>Illinois</b>	
Alpha and Eta—Illinois Wesleyan University, Bloomington, and Illinois State Normal University, Normal.....	20.50
Beta—Eureka College, Eureka.....	20.73
Gamma—Carthage College, Carthage.....	17.02
Delta—Bradley Polytechnic Institute, Peoria .....	20.37
Zeta—Monmouth College, Monmouth.....	19.42
Theta—M'Kendree College, Lebanon.....	18.36
Iota—Northwestern Naperville.....	23.95
Kappa—Lombard, Galesburg.....	17.81
Lambda—Shurtleff, Alton .....	17.48
<b>Indiana</b>	
Alpha—Franklin College, Franklin.....	27.08

<b>Iowa</b>	
Alpha—Iowa Wesleyan University, Mt. Pleasant.....	16.87
Beta—Central College, Pella.....	17.26
Delta—Morningside College, Sioux City.....	16.61
Epsilon—Simpson College, Indianola.....	16.36
Zeta—Parsons College, Fairfield.....	16.09
Eta—Upper Iowa University, Fayette.....	21.84
Theta—Coe College, Cedar Rapids.....	18.34
Iota—Western Union College, Le Mars.....	17.51
Kappa—Buena Vista College, Storm Lake.....	19.59
Lambda—Dubuque University, Dubuque.....	22.47
Mu—Drake, Des Moines.....	15.96
Nu—Penn, Oskaloosa .....	16.28
<b>Kansas</b>	
Alpha—Ottawa University, Ottawa.....	5.64
Beta—Washburn College, Topeka .....	5.57
Gamma—Kansas State Agricultural College, Manhattan..	7.43
Delta—Southwestern College, Winfield.....	1.38
Epsilon—Fairmount College, Wichita .....	---
Zeta and Iota—Kansas State Teachers College and College of Emporia, Emporia.....	3.60
Eta—Kansas Wesleyan University, Salina.....	5.19
Theta—Kansas State Teachers' College, Pittsburg.....	6.20
Kappa—Baker University, Baldwin City.....	6.03
Lambda—Sterling College, Sterling.....	2.83
Mu—Bethany College, Lindsborg .....	5.94
Nu—Kansas State Teachers' College, Hays.....	6.23
<b>Kentucky</b>	
Alpha—Georgetown College, Georgetown.....	30.58
Beta—Centre College, Danville .....	30.98
Gamma—Kentucky Wesleyan College, Winchester.....	31.32
Delta—Transylvania, Lexington.....	30.65
<b>Louisiana</b>	
Alpha—Louisiana College, Pineville.....	31.58
Beta—Centenary College, Shreveport.....	19.46
<b>Maine</b>	
Alpha—Colby College, Waterville.....	70.94
<b>Michigan</b>	
Alpha—Kalamazoo College, Kalamazoo.....	29.30
Beta—Olivet College, Olivet .....	31.20
Gamma—Hope College, Holland.....	29.92
Delta—Michigan Agricultural College, East Lansing.....	32.16
Epsilon—Michigan State Normal College, Ypsilanti.....	32.82
Zeta—College of the City of Detroit, Detroit.....	34.01
<b>Minnesota</b>	
Alpha, Beta, Delta, and Epsilon—Macalester, St. Olaf, Ham- line, and St. Thomas Colleges, St. Paul and North- field .....	25.34
Gamma—Gustavus Adolphus College, St. Peter.....	23.60
<b>Mississippi</b>	
Alpha—Millsaps, Jackson.....	28.18
<b>Missouri</b>	
Alpha—Westminster College, Fulton.....	14.38
Beta—Park College, Parkville.....	8.10
Gamma—Central College, Fayette.....	13.27

Delta—William Jewell College, Liberty-----	8.31
Kansas Kappa Branch—Missouri Wesleyan College, Cam- eron -----	9.70
Zeta—Culver-Stockton College, Canton-----	16.58
<b>Montana</b>	
Alpha—Montana Wesleyan College, Helena -----	49.15
Beta—Montana State College, Bozeman-----	47.29
<b>Nebraska</b>	
Alpha—Nebraska Wesleyan University, University Place--	11.45
Beta—Cotner College, Bethany (Lincoln)-----	11.45
Gamma—Doane College, Crete-----	12.17
Delta—Hastings College, Hastings-----	12.59
Epsilon—Grand Island College, Grand Island-----	13.43
Zeta—Kearney State Normal, Kearney-----	18.29
<b>North Carolina</b>	
Alpha—State College, Raleigh-----	51.31
Beta—Wake Forest College, Wake Forest-----	51.31
<b>North Dakota</b>	
Alpha—Jamestown College, Jamestown-----	37.37
<b>Ohio</b>	
Alpha—Baldwin-Wallace College, Berea-----	36.92
Gamma—Hiram College, Hiram-----	37.77
Delta—University of Akron, Akron-----	37.58
Epsilon—Otterbein College, Westerville-----	33.29
Zeta—Marietta College, Marietta-----	37.16
<b>Oklahoma</b>	
Alpha—Oklahoma Agricultural and Mechanic Arts College, Stillwater -----	5.30
Beta—University of Tulsa, Tulsa-----	5.87
Gamma—Oklahoma Baptist University, Shawnee-----	7.58
Delta—Northwest State Teachers' College, Alva-----	4.34
Epsilon—Oklahoma City College, Oklahoma City-----	6.18
Zeta—Oklahoma College for Women, Chickasha-----	6.90
<b>Oregon</b>	
Alpha—Linfield College, McMinnville-----	70.50
<b>Pennsylvania</b>	
Alpha—Grove City College, Grove City-----	42.40
<b>South Carolina</b>	
Alpha—Wofford College, Spartanburg-----	44.77
Beta—Presbyterian College of South Carolina, Clinton-----	46.53
Gamma—Newberry College, Newberry-----	47.33
<b>South Dakota</b>	
Alpha—Dakota Wesleyan College, Mitchell-----	21.55
Beta—Huron College, Huron-----	23.37
Gamma—Yankton College, Yankton-----	18.85
Delta—South Dakota State College, Brookings-----	24.67
Epsilon—Sioux Falls College, Sioux Falls-----	19.90
Zeta—Northern State Teachers' College, Aberdeen-----	26.18
Eta—Augustana College, Sioux Falls -----	19.90
<b>Tennessee</b>	
Alpha—Maryville College, Maryville -----	34.31
Beta—Tusculum College, Greenville-----	36.43

**Texas**

Alpha—Southwestern University, Georgetown-----	19.29
Beta—Trinity University, Waxahachie -----	15.55
Gamma—East Texas State Normal College, Commerce----	16.81
Delta—Howard-Payne College, Brownwood -----	18.39
Epsilon—Baylor College for Women, Belton-----	18.03
Zeta—Texas Christian University, Fort Worth-----	13.29
Eta—North Texas State Normal College, Denton-----	16.21
Theta—Simmons, Abilene-----	19.09
Iota—Baylor, Waco-----	16.50

**Virginia**

Alpha—Farmville -----	48.82
-----------------------	-------

**West Virginia**

Alpha—Buckhannon -----	41.61
------------------------	-------

**Washington**

Alpha—College of Puget Sound, Tacoma-----	71.57
---	-------

**Wisconsin**

Alpha—Ripon College, Ripon-----	30.26
Beta—Carroll College, Waukesha-----	27.73
Gamma—State Teachers' College, Oshkosh-----	30.14

Courtesy Union Pacific System

## PROFESSOR BURNS TO CONDUCT EUROPEAN TOUR

Professor and Mrs. Dana T. Burns of Baldwin-Wallace College are organizing a party for a tour to Europe which they will conduct next summer. The party will leave June 28 on the great steamer "Leviathan." Among the interesting features of the trip will be a week in London, a three-day trip through the Shakespearian country, to Oberammergau to see the passion play, Switzerland, Venice, Florence, Naples, Rome, Genoa, and the rest.

The Midwest Debate Conference chose this question for men's debates: Resolved, that the United States should adopt a policy of disarmament. It was agreed this question should mean (1) that the United States should take the lead immediately without waiting for action by international agreement, if necessary; (2) complete disarmament ultimately; (3) disarmament is not to be carried beyond the limit of an adequate police force. For the women, this question was adopted: Resolved, that the chain store is detrimental to the public welfare. The newly elected officers of the Midwest Debate Conference are : president, N. J. Weiss, Albion College, Michigan; vice-president, Miss F. E. Cobb, Wheaton College, Illinois; secretary-treasurer, H. B. Allen, Shurtleff College, Illinois.

The Midwest Debate Conference passed resolutions to the effect

1. That we urge high school and college directors of debate to discourage the substitution of "tailor-made" debate briefs and speeches for individual work on the part of the student. And especially do we condemn the commercialized activities of "Debate Bureaus" and "Public Speaking Societies" that make such substitution possible.

2. That we favor the movement for consolidation of national honorary forensic fraternities.—The Platform World.