

the start of the rebuttal speeches which team has the better organization and, depending on the analysis, determine his further actions in that debate. Characteristically, debaters do analyze debates on the "content" basis. If the judging decisions are then rendered on the same basis, the decisions will be better understood by the student. Though debaters will probably always continue to contest certain decisions, it is certainly far easier to explain to a debater why he lost a given debate by pointing at a certain argument that was left standing than to tell him that his organization was poorer than the other team's. Other phrases embody even greater ambiguity. Such improvements in judging and debating we feel cannot help but lead to a better educational experience for the student. The better qualities of debating which are to be encouraged, a consideration far more important than winning a tournament, would be reinforced by the judge's vote.

If the debater understands the decisions more clearly, he will be better motivated to work on improving himself and will thereby develop the skills desired. It might pay to point out that debate was developing the skills contained on the skills breakdown ballot plus many, many more long before such an approach to debate judging was instituted. It did so because practice in those skills was necessary to adequately, in a competitive situation, discharge the basic duties and responsibilities of a side. These duties are clear cut and understood by the student. If he is told that he lost several debates because of his inability to answer a particular argument, he will be highly motivated to go out, study the issues involved in the argument, and obtain evidence adequate to answer it. If he is told, on the other hand, that his analysis and organization were relatively weak, no clear cut pattern of action for the student is called for. We submit that one cannot work on analysis in abstraction but only on the analysis of a given item. The generalized skill will develop from extended practice of a specific sort. The one major objection to this approach which is at times raised by advocates of the skills breakdown approach is that it may pay too little attention to such factors as delivery. To this we would pose a two fold argument. First of all, delivery is still involved in the debate to what we feel to be the correct extent in that the debater will have to communi-

cate his arguments effectively to the judge so that they may be understood and properly evaluated. Certainly the criteria for evaluating delivery ought to be consistent with calling best that delivery which enhances the effectiveness of an argument. If it does enhance the argument or facilitate its comprehension it will ipso facto be involved in the decision. Secondly, we feel that placing the emphasis on the content is not a misplaced emphasis. Certainly, it is the content, thinking aspect which most differentiates debate from other speech activities which can and have been put into contest form. Original oratory and extemporaneous speaking are good activities to develop certain particular skills. Each of them requires far less preparation than does debate. However, none of them captures the excitement of the student, his interest, or his attention as much as does debating. In addition, debate involves certain analytical skills which are not involved in the other speech activities. We feel it is not accidental that these differences exist in that activity which most captures student interest and has through time received the greatest support (including that of the modern college administration).

In summary then, we feel that the drift toward judging on the basis of a display of a series of skills within an intellectual vacuum will tend to turn debate into a relatively artificial parade of those skills—that is, a sham or a small dramatized performance of the intellectual combat which originally characterized that activity and provided its strength.

STUDENT CONTRIBUTIONS WANTED

As a permanent policy, THE FORENSIC will pay \$10.00 for any student contribution which the editors deem worthy of publication. For instance, some of the articles which were runners-up to the winning article in our contest are clearly of interest to our readers and will be published in future issues as space permits.

Associate Editor Lawrence suggests that a good topic might be "What Makes the Ideal Coach." Why not try your hand?

The Coach's Letter to The Freshman Squad

DON K. WRIGHT

Dear Beginning Debater,

I have recently traversed the 3-ring circus of a high school debate institute. This was an extremely fruitful experience and was enjoyed by all. I must admit, though, that while much good technique was demonstrated, there was not a little allusion to certain stereotyped procedures which left a bitter taste in my forensic mouth.

Wearing as I am today the cloak of the pedagogue, I cannot be untrue to my calling nor my inclination by failing to "set you straight" on certain issues that are certainly more than unimportant, but perhaps a little less than essential. Nevertheless, I am the custodian of at least one clear observation—the following ten-commandments, plus five, cannot be ignored by the forensic neophyte.

In wanting to proceed in an organized, orderly fashion, I first decided to entitle these 15 theses "Musts for the Mad Mutilaters of the Forensic Art." However, on closer examination I had to concur with the architectural code, which I'm certain says that something must be built before it can be mutilated. Therefore, I decided that a fairer and far truer title would be, "How to Show Irrevocably That Your Reasoning Hasn't Reached the Boiling Point."

If you follow these 15 suggestions to the letter, then you can be assured of a modicum of success equal to that of debaters with similar intent.

MUSTS FOR THE MAD MUTILATERS OF THE FORENSIC ART

or

HOW TO SHOW IRREVOCABLY THAT YOUR REASONING HASN'T REACHED THE BOILING POINT

1. Be "sweetly" gracious in your salutatory remarks.

2. Make a big issue by defining obvious portions of the proposition.

3. Use certain cliches—a few of which are the following:

a. "Our *most worthy* opponents"

b. "Because of the irrefutable evidence we have presented" (You had four quotes—all of which were opinionated and not evidenciary)

c. "I think" or "I strongly believe" (well, good for you)

4. Have a plan to meet your needs that is untenable, childish, and not worthy of mature utterance.

5. Use analogies whose comparisons do not include adequate similarities.

6. Be so unorganized that it is a toss-up who is the most confused about your case—you, your opponents, or the judge.

7. Try to meet by adamant refutation every word, syllable, and grunt offered by the opposition.

8. Ridicule your opponents instead of meeting their issues.

9. Be sadistically sarcastic (even to the point of sneers, smirks, "knowing glances" to your colleague, and audible sighs).

10. Take one or more writing implements to the stand with you in case of mental emergencies.

11. Talk to your colleague through a shuffle of materials while your opponents are on the floor.

12. Forget logical reasoning and depend entirely on "authoritative" quotes for corroboration of contentions.

13. Talk at an extremely rapid rate in order to confuse your opponents.

14. Use "heavy" gestures that clearly identify you as a "debater-in-the-know."

15. By all means have at least two debate handbooks within easy reach in every contest in order to prove to your opposition and judges alike that you are up on the latest materials.

It is plain to me that eloquence, like swimming, is an art which all men might learn, though so few do. —Emerson

Don K. Wright is Director of Forensics at Ouachita Baptist College, Arkadelphia, Arkansas.

The Process Of Constitutional Revision

DONALD SIKKINK

The March 1960 issue of *THE FORENSIC* contains an article entitled, "In the Pursuit of Excellence—Our Constitution." Professor Alusow's comments should be required reading (or re-reading) for every student and coach that will be attending the 1961 convention. If you can't take the time, at least consider these random comments. "... there was much muttering about our Constitution . . . now is the time to follow through on these grumblings. Is there light or merely heat? Study the Constitution. Examine it carefully. Peruse the history and the traditions of Pi Kappa Delta. If weakness is found, the area should be crystallized and considered. . . ."

The purpose of the present article is to discuss the process by which the Constitution of Pi Kappa Delta can be changed. A complete copy of the Constitution is found in the January 1960 *FORENSIC*, and additional copies can be secured by writing to the national secretary. Article XI contains the Amendment Provision which reads, "This Constitution may be amended at a regular national convention by a two-thirds vote or by a three-fourths vote in the referendum initiated by the National Council and taken as provided for in Article V, Division C, Section 4 (b)."

There is nothing mysterious or difficult about the two processes and both will be employed this year. About the time you receive this issue of *THE FORENSIC* your chapter will receive from the Constitutional Revision Committee Chairman a proposed amendment to Article V, Division C, Section 2 (c) proposing a longer term of office for the secretary. Each chapter will cast its vote on this proposal. At the national convention, the Revision Committee Chairman will be proposing an amendment to Article V, Division C, Section 5 (a) which would make more specific the procedure for revok-

ing a chapter's charter. Each delegate will cast his vote on this proposal. Both of these recommended amendments will come from the Committee on Constitutional Revision about which the Constitution says, "The President shall appoint a committee of three members who shall study the Constitution in order to recommend to the National Council and Convention such changes as may be necessary to keep the Constitution abreast with developments in forensic activities." At the summer meeting of the National Council, Professor Capp of Baylor and Professor Corbin of Idaho State were appointed to serve on the committee along with the writer of this article.

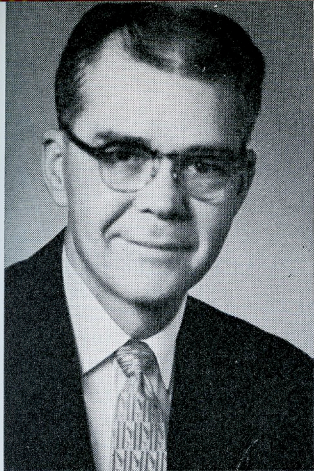
The existence of this standing committee does *not* mean that amendments may only be proposed by the committee. It simply means that we have a committee charged with the responsibility to look for necessary changes. Other recommendations may come from provinces, local chapters, or the individual delegates attending the business sessions of the National Convention.

Any delegate preparing to propose an amendment might want to consult with the committee to clarify wording and arrange a suitable time for the proposal to be presented to the convention. While such procedure is desirable, it is *not* required. Members of Pi Kappa Delta have a considerable amount of freedom in the method by which their constitution may be amended.

This explanation of the process for constitution revision was not written as an open invitation to rifle the Constitution. I personally believe that the present document is for the most part serving us effectively. Any proposal to change it should be approached seriously and thoughtfully. Yet we know that as we grow and conditions change, the document will have to change. If after serious reflection a province, chapter, or delegate has a proposal for altering the Constitution, I am sure they would find that the National Convention through dis-

(Continued on page 23)

Donald Sikkink, South Dakota State College, is a member of the National Council of Pi Kappa Delta and Chairman of the Committee on Constitutional Revision.



Harvey Cromwell

The President's Page

The beginning of a school year is always a busy time, especially for debaters, forensic speakers, and coaches. There are new questions to study, arguments and speeches to prepare, the year's program to plan; sponsors and directors face the task of new assignments. As you are preparing for your year's program, I hope you are including plans to attend the Pi Kappa Delta National Convention at Oklahoma State

University, March 26-31, 1961.

Your National Council spent three very busy days and nights during the latter part of August formulating plans and procedures for the National Convention. Oklahoma State University will provide very excellent facilities for our meeting. The final success of the 1961 Convention, however, will not depend on the mechanics but upon the members who attend and participate.

Pi Kappa Delta is a democratic organization and it is important that each chapter be represented at the business sessions held at the Convention. It is in the business sessions that you or your representative will elect national officers and adopt policies for the future growth and activity of our organization. The ultimate power of Pi Kappa Delta rests with the local chapters, and I hope you are planning to have your chapter represented.

Information regarding convention and contest rules will be printed in the January issue of *THE FORENSIC*. Other information will come to you from the National Secretary. To make sure all material reaches you without delay, please send the name of your chapter sponsor to Dr. D. J. Nabors, National Secretary of Pi Kappa Delta, East Central College, Ada, Oklahoma.

Last year was a banner year for Pi Kappa Delta. Almost 1,000 new students qualified for membership, and charters were granted to five new colleges and universities who have strong, active speech departments and forensic programs. I am confident that 1969-61 will be an even greater year.

My best wishes for a successful forensic year and I sincerely hope that 1960-61 will bring each of you many pleasant experiences and successes. Hope to see you at Stillwater.

Chapter Notes

EASTERN ILLINOIS UNIVERSITY

Officers are Barbara Atteberry, president; Bob Boyer, vice-president; Virginia Wright, secretary-historian; and Danny Miller, treasurer . . . will host 24th annual tourney on February 4 . . . Gail Shadwell won second place in state tourney for women's extemp.

ILLINOIS STATE NORMAL UNIVERSITY

Following awards given last spring: Dale Gronemeier and Dennis Gouran, Men's Honor Debate Team; Virginia Smith and Betty Haack, Women's Honor Debate Team; Dale Gronemeier, Outstanding Speaker; Keith Loeffler, Past President's Award; and Janice Blackburn, Most Valuable Squad Member . . . will sponsor 29th forensics tourney in January . . . president is Mary Ellen Covey and vice-president is Dennis Gouran.

SOUTH DAKOTA STATE COLLEGE

Won several superiors at the bi-Province . . . had their advisor, Donald Sikkink, elected Province Governor . . . held a spring outdoor initiation ceremony instead of the traditional banquet . . . ceremony followed by a picnic supper and volleyball tourney between old and new members which was won by the old timers in a last ditch stand . . . elected Carolyn White, a PKD transfer from Nebraska Wesleyan as local president . . . gave their scholarship raised by the local high school tournament to Collen Dockter of Milbank, S.D. . . .

WISCONSIN STATE COLLEGE, WHITEWATER

New officers are Richard Dunham, president; Athanas Georgalas, vice-president; Beverly Wallace, secretary-treasurer; and Sandralee DeSombre, corresponding secretary . . . initiation of seventeen new members conducted by college president, Dr. Robert Williams, a charter member of Pi Kappa Delta . . . will sponsor high school discussion clinic-tournament . . . and high school debate tourneys.

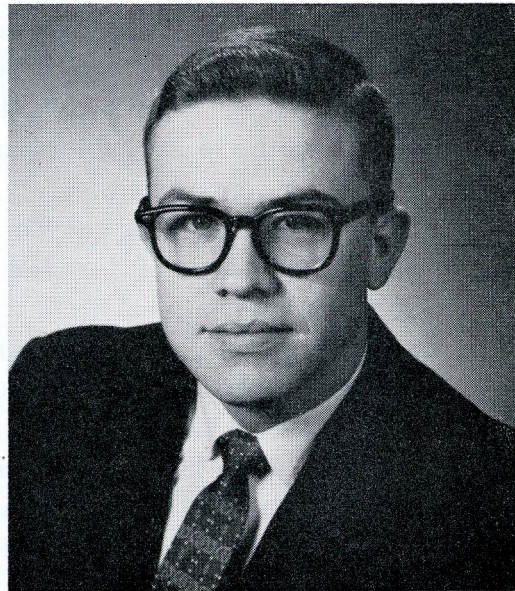
BLACK HILLS TEACHERS COLLEGE

New sponsor is Dr. Arthur Prosper . . . new officers are Wayne Wendell, president, and Lois Schroeder, secretary-treasurer . . . money raising ideas include several coffee hours . . . concessions at one home football game . . . sale of helium-filled balloons at homecoming game . . . raffle of stereo-phonograph at Christmas time.

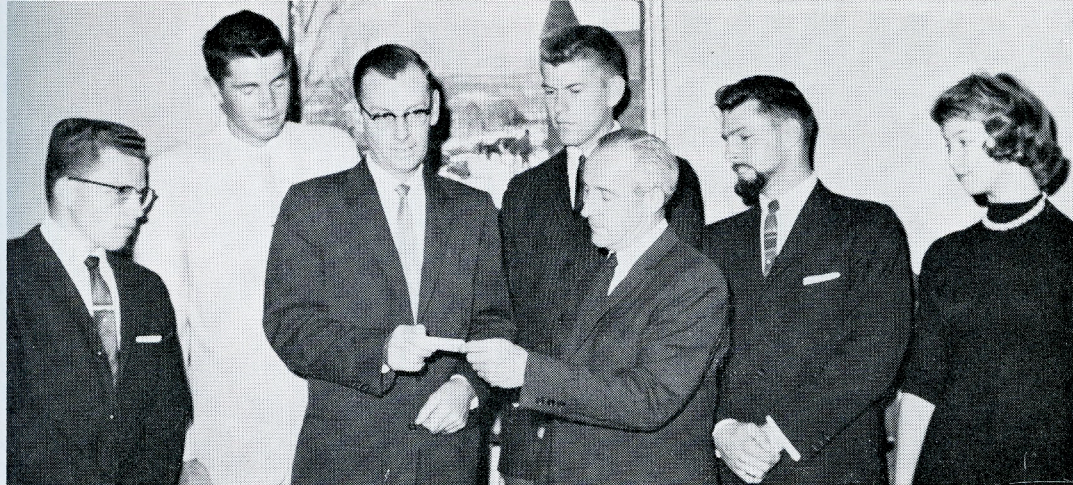
HOPE COLLEGE

Sponsor Robert L. Smith appointed a chairman for Province revamping committee to study Province of the Lakes tournament. . . National Council Member, Dr. Raymond Yaeger of Bowling Green State, spoke at annual Spring Banquet and initiation of new members . . . held ten cross-examination debates before area church groups and high schools.

SOUTHEAST MISSOURI STATE, CAPE GIRARDEAU



For the second consecutive year a speaker from Cape Teachers won the Interstate. Pictured is James W. Bowman, Jr., winner of the 86th Interstate Oratorical Contest in April, 1960. . . Coach Fred Goodwin reports a large group of beginners hard at work in an effort to emulate last year's outstanding record.



Dr. R. R. Renne, President of Montana State College, receives his honorary membership card in Pi Kappa Delta from Northwest Province Governor, L. A. Lawrence. Looking on, from left to right: Gary Crane, debate captain; Jack Dunn, vice-president; Duane Boe, commissioner of forensics; Don Micken, president; and Tina Reynolds, sec-treas.

MONTANA BETA CHAPTER

The year 1959-60 proved to be extremely satisfactory for members of Montana Beta Chapter of Montana State College. It proved to be a rather successful year in all areas of forensic activity.

The M.S.C. debate squad compiled a record of 62½ per cent wins for the year. The sophomore team of Jack Dunn and Gary Crane won the Treasure State Tournament, the University of Puget Sound Tournament, and the Montana Intercollegiate Tournament. This same team was privileged to represent the Northwest at the West Point Tournament.

In individual events, Tina Reynolds, a freshman, won 1st place in Oral Interp at the Treasure State, the Northwest T.K.A., and at the Pi Kappa Delta Province Tournament. Tina also took a Superior at the Rocky Mountain Forensic League and 2nd at the Montana Intercollegiate. In addition she took 2nd in Extemp at the Province and at the T.K.A. tournament, and she and her debate partner, Pearl Nickey, finished 3rd in debate at two tournaments.

Other important wins during the year included Don Micken, Superior in Extemp at the Rocky Mountain Forensic League; Gary Crane, 1st in Oratory; and Martin Perga, 1st in Extemp.

During the year M.S.C. debaters travelled over 12,000 miles to compete in nine tournaments!

At the spring banquet and initiation Dr. R. R. Renne, President of M.S.C., was initiated as an honorary member of Beta Chapter, and the following officers were elected for 1960-61: president, Don Micken; vice-president, Jack Dunn; secretary-treasurer, Tina Reynolds; and debate captain, Gary Crane.

WILLIAM JEWELL COLLEGE

Missouri Delta has 20 debaters reporting for work this fall . . . It sponsored a high school debate clinic October 8, will sponsor the annual Blizzard college debate tournament Saturday, January 14 . . . and will sponsor a freshman intramural speech contest in the spring . . . Alumnus Max Von Erdmannsdorff is in the finals of moot court debate at the University of Kansas City Law School . . . Alumni Tom Graves and Clarence Finley have just passed the Missouri bar exam and are practicing in Kansas City . . . Mr. Russell Keeling (M.A. Baylor University) is the new assistant director of debate.

HURON COLLEGE

Potential for a winning year indicated by the return of three superior winners at Pi Kap Convention and Tourney a year ago . . . Lois Miner, Celia Fritts, Ron Krikac . . . among other talented freshmen, Jim Miner, brother of Lois, will strengthen the squad.



Shown above, left to right, are Heidelberg debaters with the Duquesne University trophy: Joan Jensen, Jean Tanley, Coach Archie Thomas, Miriam Shoffner, and Sue Liston.

HEIDELBERG COLLEGE

Officers for this year are Gene Keil, president; Tom Wetzell, vice-president; Pat Kropf, secretary; and Sue Liston, treasurer.

WISCONSIN STATE COLLEGE, OSHKOSH

New director of forensics is Robert Carr . . . relieves Dr. William White, who will devote full time to chairmanship of department . . . sixteen returning members . . . will sponsor fourth annual debate tourney . . . and high school forensic institute with section in oratory, public speaking, extemp, interp, debate, and drama.

McKENDREE COLLEGE

Dean Norman Grandy named an honorary member of McKendree chapter . . . local president, Monic McCracken married to Reverend Boyd Carter.

SOUTHERN ILLINOIS UNIVERSITY

Officers are Kent Brandon, president; Jim Petty, vice-president; and Sharon Loveless, secretary-treasurer . . . new assistant debate coach is Roger Hufford . . . participated in a series of television debates sponsored by Northwestern University and CBS . . . shown on five major stations coast-to-coast . . . sophomores Phil Wander and Glenn Huisinga defeated Northwestern, and seniors Keith Sanders and Kent Brandon defeated Southern California.

HAMLIN UNIVERSITY

Officers are Cliff Krause, president; Carolyn Sorenson, vice-president; and Mary Tarasar, secretary-treasurer . . . will hold on campus the Templer Debate Tournament (named after former head of the speech department), a high school debate tournament, the tyro college and Minnesota college championship tourneys.

NEBRASKA STATE TEACHERS COLLEGE, KEARNEY

Returning debaters look forward to another fine year . . . last year were in the top group of every tourney entered . . . will sponsor annual college invitational and annual high school meet.

LINFIELD COLLEGE

To raise money debaters will man a food booth at the local drag races . . . also will sell folding seats at some of the football games . . . will go to national PKD convention by way of the East Coast . . . sponsor, Roy D. Mahaffey awarded a doctor's degree by Linfield on September 22.

CENTRAL COLLEGE

Missouri Gamma will sponsor a campus movie to help raise funds . . . nineteen debaters vying for varsity and thirty others interested in individual events . . . second year that campus leadership is assumed by

PKD member as Lloyd Geiger is elected student body president . . . Roberta Woodington claims second rank of Special Distinction . . . now has one in debate as well as in extemp and oratory.

NEBRASKA STATE TEACHERS COLLEGE, WAYNE

Officers are Paul McCluskey, president; Paul Pack, vice-president; and Rosalie Yates, secretary-treasurer . . . plans include five television shows, first based on debate topic . . . filming a movie in connection with the college's golden anniversary . . . series of lectures and debates in area high schools . . . forensic scholarship created this year with funds raised from a PKD sponsored ballet directed by Nina Youshkevitch, former prima-ballerina for the Met.

SOUTHERN STATE TEACHERS COLLEGE, SPRINGFIELD

New officers are Loy Gravholt, president; Tom Efta, vice-president; Delmar Vander Werff, secretary-treasurer; and Carl Neumeister, student council representative . . . chapter selling mums for Founders Day, a homecoming activity.

TENNESSEE POLYTECHNIC INSTITUTE

New officers are: Allan Kelly, president; David King, vice-president; Sue Richardson, recording secretary; Faye Halfacre, corresponding secretary; and Leonard Crawford, treasurer . . . Tennessee Delta and the Speech Activities Club will sponsor an

intramural program open to all students not in PKD or speech club . . . local sponsors offer prizes . . . will also sponsor high school speech clinic for District Five of Tennessee Speech and Drama League . . . one day affair with PKD and speech club members serving as leaders in the various fields of forensics . . . have ten to twelve tournaments scheduled for year.

MACALESTER COLLEGE

Six new members initiated at the banquet which marked the end of last year's season . . . making a chapter total of twenty-six . . . last year's teams compiled an enviable record which this year's squad hopes to equal . . . plans being made already to attend the Convention in the spring.

AUGUSTANA COLLEGE, SIOUX FALLS

As the 1960-61 season begins, chapter membership at 11, the largest fall number in several years . . . 13 new members taken in last year, to end in June with 19 actives . . . Officers for the coming year are Dave Dahl, president; John Hedland, vice-president; Nadine Thorson, secretary; Sharon Martin, recording secretary.

GEORGETOWN COLLEGE

New coach is Mrs. Suzanne Knox Lows . . . traditional debate held on the steps of Highbaugh Hall enacting the literary-society debate of 120 years ago complete with costumes, band and banners . . . probable topic: "Resolved, That the 'flunk-out rate' in college should be increased."



Pictured above are new members initiated into Pi Kappa Delta at the annual banquet of the South Dakota Eta Chapter, Augustana College, Sioux Falls, S. D., May 16, 1960. They are, left to right: front row, William Haboush, Leah Storsve, Sharon Martin, Nadine Thorson, Judy Miller, Steve Rye; back row, John Hedland, Ted May, Jim Johnson, Norman Petrik, Dick Schlicht, and Dave Dahl.



Team Picture of Univ. of Redlands, California, Alpha Chapter. Left to right: Graduate assistant John Coufal, Judy Brodie, Dick Strong, Carol Abbott, Penny King, Jim St. Clair, Sylvia Caudle, Earl Armbrust, Alan Sill, Regina Insley, Dixie Surry, Tom Kieth, Jackie Reeder, and Dr. Eugene Moulton.

CONCORDIA COLLEGE

New officers are Bruce Gronbeck, president; David Olson, vice-president; Norma Hauge, secretary-treasurer; Victoria Strandness, corresponding secretary; Ray Anderson, newsletter editor; Robert Knutson, student director of tournaments . . . Last spring all records of freshmen accepted for next fall were checked and individual letters sent which introduced the forensics program to them . . . spring banquet held initiating members (after they cleaned the speech department offices) and installing the new officers . . . our sponsor, John M. Burt, gave the major address of the evening . . . have 20 out for debate with 20 more in individual affairs . . . Speakers Bureau will list over 20 items (speakers and groups) . . . these are sent to all local civic, church, school groups in 50 mile radius . . . will sponsor group action discussion tourney, high school tourney, Red River college tourney . . . forensic scholarship for full tuition announced as gift of sponsor John M. Burt . . . will be awarded in the spring . . . newsletter being published on monthly basis . . . forensics budget doubled for this year by action of college administration.

WISCONSIN STATE COLLEGE, EAU CLAIRE

Wisconsin Zeta 216 of Wisconsin State College at Eau Claire, had a unique formal installation dinner party last year because all members of the fraternity were guests of Mr. and Mrs. W. D. McIntyre at the an-

nual dinner which was held at the Walnut Room at the Eau Claire Hotel on Sunday evening, May 15. Mr. McIntyre is the head of the Coordinating Committee for Higher Education for the state of Wisconsin and also President of the Board of Regents of Wisconsin State Colleges.

Local president, Jim Benson, who is a graduate assistant at Purdue University this fall, was the master of ceremonies at the banquet. Miss Judy James gave a report of the Joint Province Convention. Professor Grace Walsh, chapter sponsor, brought greetings to the group from Robert Forsythe of the Department of Health, Education, and Welfare. Mr. Forsythe was the installing officer when the chapter held its first installation in 1951. Forensic manager, Dale Johnson, presented an honorary membership to Miss Ruth Foster, Professor of Art, for her years of service to the Forensic Association. Forensic manager, John Figlmiller, announced the names of the two new managers who will aid him next year. They will be Nancy Clark, of Augusta, Wisconsin; and John Phelan, of Menomonie, Wisconsin. Speaker of the evening was an honorary member of Pi Kappa Delta, Professor Emeritus Laura Sutherland of the college history department, who gave a most interesting talk about the struggle to locate our college in Eau Claire. The pledges gave their traditional skit and the following were admitted to membership: Marie Fischer, Judy Gierl, Bill Green, Tom Johnson, Joan Keuber, Ron Lindeke, Julie Moldrem, Nancy Nadolski, John Phalen,

Victor Russell, Mary Jo Ryan, Eleanore Sherman, and Loretta Sobota.

The final passing of the gavel from the retiring to the new president followed the installation of these new officers: president, John Figlmiller; vice-president, Becky Peroshek; secretary, Nancy Clark; treasurer, Bill Green; historian, Julie Moldrem.

PHILLIPS UNIVERSITY

Participated in seven tournaments with superior sweepstakes in junior women's division at Ada, Oklahoma . . . third place sweepstakes at St. John's Tournament . . . individual honors at Rocky Mountain Speech Conference and at Northwestern Louisiana Tournament . . . advancements: David Wheeler and Jerry Fankhauser to Special Distinction; LaNora Gregory, Norma Noland to Honor; and Penny Paxton to Proficiency.

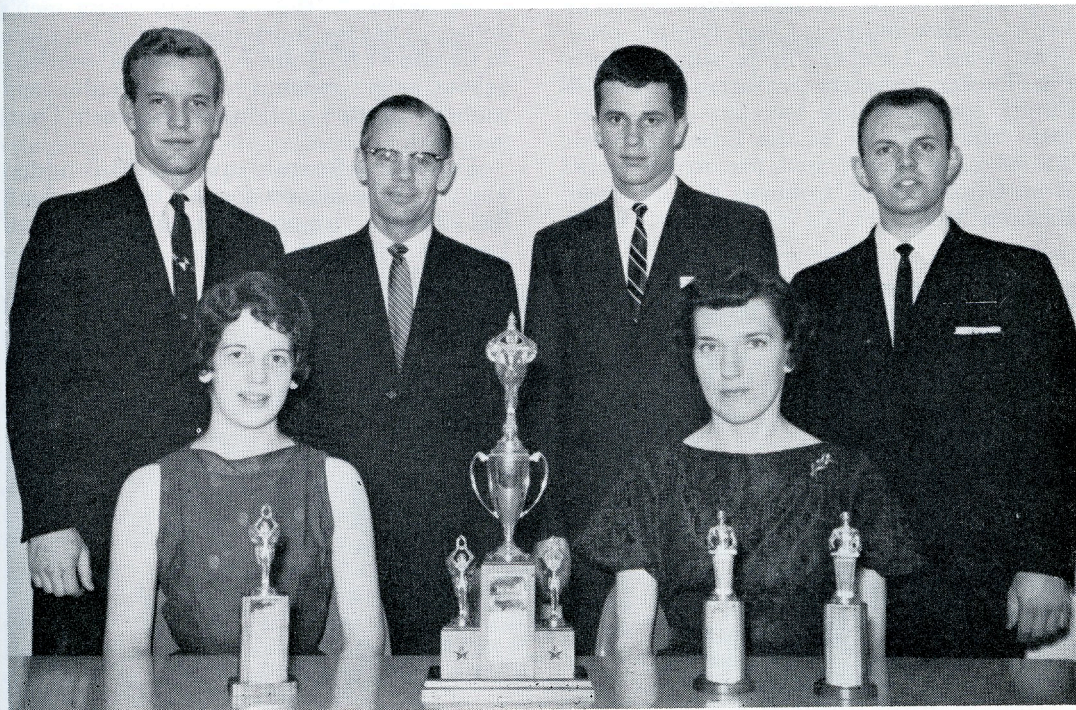
TABOR COLLEGE

Waldo Neufeldt and Mervin Dick won 75 per cent of year's debates . . . Dr. Lando Hiebert completes tenth year as head of department . . . will be succeeded by Dwight Wiebe.



WHEATON COLLEGE

The annual Pi Kappa Delta Banquet of Wheaton College was given in honor of Dr. Clarence L. Nystrom, Chapter Sponsor and Chairman of the Speech Department. It was held at Aurora, Illinois, on April 28, 1960; over 40 current members past and present attended. To celebrate Dr. Nystrom's silver jubilee as Director of Forensics he was presented a beautiful silver loving cup by President David Clum. The cup was inscribed: "To Clarence L. Nystrom for 25 Years of Outstanding Forensic Leadership from the Members of Pi Kappa Delta." In the picture (left to right) are Prof. Clarence L. Nystrom, Director of Fo-



Pictured are: Suzanne Siemens, sec-treas.; Malinda Penner, instructor; Paul Wiebe, president; Lando Hiebert, instructor; Waldo Neufeldt; Mervin Dick, vice president, all from Tabor College.

rensic and Chapter Sponsor. On this occasion eight new members were inducted into the Illinois Mu Chapter of Pi Kappa Delta.

WESTMINSTER COLLEGE

A larger group of new men and a return of last year's veterans augurs an active forensic year for Missouri Alpha . . . Early events scheduled include the University of Missouri Novice Tournament, October 15, the Grinnell College Discussion Conference, October 21, and a debate with Oxford University, October 26 . . . Brad Kent and Mike Linihan chosen to engage in a split debate on the merits of socialism with the visiting Englishmen . . . plans being made, naturally, to attend the National Convention in Stillwater . . . Tom Fernandez, instructor in speech, to take charge of all individual contest events this year.

BUENA VISTA COLLEGE

Iowa Kappa chapter climaxed the 1959-60 season with a banquet at which four new members were initiated: Lynn Phelps, Keith Gillespie, Gary Michener, Marilyn Lewis . . . Dr. George Reynolds, professor of political science, a new honorary member . . . new officers: Lynn Phelps, president; David Lampe, vice-president; Kathryn Tucker, secretary-treasurer; Keith Gillespie, corresponding secretary . . . Rosemary Shaw winner of the Edson Forensic Award . . . others cited for achievement: Ron Olson, Carol Coburn, Carol Olson, Barbara Moe.

LOS ANGELES STATE COLLEGE

Used twenty thousand research cards in attending 22 tournaments including a trip to Hawaii . . . during year won 205 awards, including 52 superiors, 98 excellents, 6 first places, 12 second places and 17 third places . . . discussion team won first place in national tournament.

SOUTHWESTERN COLLEGE

Last year's program included attendance at 21 tournaments and participation in 305 debates . . . had 49 colleges from 11 states in attendance at annual tournament . . . numerous wins including superior sweepstakes in two divisions at East Central Oklahoma tourney . . . quarter finalists at the first Air Force Academy Tournament . . . two undefeated teams in William Jewell's "Blizzard" Tournament . . . first place in women's extemp at Baylor . . . first in women's Peace Oratory in Kansas . . . an undefeated team at Kansas Intercollegiate Debate League Tournament . . . second place in senior men's debate at University of Arizona . . . superior debate team, superior debater, and superior discussor at University of Nebraska . . . third place in senior men's debate at Savage tournament . . . third place in debate at St. John's . . . first in women's debate, men's extemp, women's radio, and women's oratory at Louisiana Speech Tournament.

This year a forensic squad of 25 is underway . . . new officers for '60-'61: president, Bill Todd; vice-president, Dave Dolsen;



Annual Forensic Banquet, Buena Vista College. Left to right, sitting: David Lampe, Carol Olson, Barbara Moe, Gladys Kuehl, Carol Coburn, Rosemary Shaw, Kathryn Tucker, Ronald Olson; standing, Marilyn Lewis, Keith Gillespie, Gary Michener, Lynn Phelps.