

place, Leland Regier, Sioux Falls; second place, Paul Rogness, Augustana; third place, Sam Dicks, Dakota-Wesleyan University. Experienced, Division A — first place, Orval Van Deest, Southern State Teachers; second place, Larry Krein, Northern State Teachers; third place, Rosemary Kerr, Huron. Experienced, Division B—first place, Wayne Severson, South Dakota State; second place, Elmer Schwieder, Dakota-Wesleyan University; third place, Pat Brooks, Yankton.

PACIFIC LUTHERAN COLLEGE

On the campus of Pacific Lutheran College, one of the most active organizations is the Washington Epsilon Chapter of PKD. They sponsor such events annually as The Student Congress and The High School Debate Tournament both of which are represented by high schools throughout the state. This spring, welcome guests will once again be the International Debators from the University of London, England. The debate squad of forty members looks forward to a continued successful and promising competitive season. The year was opened by attending the W.S.A. tournament in Tucson, Arizona. Participating in numerous tournaments, they have thus far won the Sweepstakes trophy awarded at Seattle Pacific College. In the future they will journey to Linfield, St. Martins and to the University of Redlands for the National Pi Kappa Delta tournament. Professor T. Karl, coach of the squad, holds the office of Activities Coordinator for the Western Speech Association encompassing eleven states. Mr. John Ericson, assistant coach, was an instructor at Texas Lutheran College prior to returning to P.L.C., from which he is a graduate. Ericson is a member of special distinction in PKD.

MISSISSIPPI COLLEGE

Louisiana College achieved an outstanding record in the Deep South Debate tournament held at Mississippi College in December. Superior ratings were received as follows: Pat Butler, oratory; Charles Staggs, extempe; Tom Ellis, after-dinner speaking; Butler, oral interpretation; Butler and Jan Beauboerf, Junior debate; Richard Steltner and Ellis, Staggs and Dale Wright, Senior debate. Robert Bradley and Alfred Statham, Millsaps College, received ratings of superior in senior debate; Lowell Jones in oral interpretation, and Bradley in extempe. Marianne Shaw and

Gwendolyn Posey, Mississippi State College for Women, were rated superior in debate and Carolyn King in oral interpretation.

RIVER FALLS WISCONSIN STATE "B" TOURNAMENT

Wisconsin State College, Eau Claire, took first place and won the trophy in the annual "B" debate tournament, held January 15, 1955, at the Wisconsin State College, River Falls. Fifty debate teams from 14 colleges and universities were entered. Eau Claire had a four win, no loss record, and its debaters, Jocelyn Gilbertson and Charles Bush, earned 53 points.

Northwestern Schools with no losses, earned 51 points for second place. St. Olaf and River Falls tied for third with no losses and 47 points each.

After dinner finalists, speaking on the subject "People Are Funny," were Tom Holter, Eau Claire, first place; Robert Strain, River Falls, second; Don Day, Hamline University, third; and Keith Thompson, River Falls, fourth.

All tournament speakers were Jocelyn Gilbertson, Eau Claire; John Geiser, Northwestern Schools; Charles Bush, Eau Claire; Jack Thomas, St. Thomas College; and Ray Kolbe, Hamline University.

The "B" debate tournament is held in order to give students who have had little opportunity to participate in intercollegiate debates some experience, and at the same time to provide the opportunity for the more experienced debaters to act as judges. The tournament is a project of the local PKD Chapter.

KANSAS STATE TEACHERS AT PITTSBURG

Colleen Recob, Guy Sutherland, Sally Allyn, Kenneth Mosier, Charles Corn, and Homer Morris participated in the Oklahoma East Central Forensic Meet. On Tuesday, December 7, the Pittsburg squad participated in two campus debates with students from Southwestern Missouri State.

IOWA CENTRAL

Debaters Mary Buwalda, Walter Hendrichsen, Beulah Roorda and Doris Meerdink and Orator Phyllis Vandelaar participated in the Bradley University tournament. On December 3-4, the debaters attended the Kirksville Missouri Teachers tournament. On February

CHAPTER DIRECTORY

ALABAMA

Beta—Alabama College, Montevallo
Gamma—Spring Hill College, Spring Hill

ARIZONA

Beta—Arizona State College, Tempe

ARKANSAS

Beta—Ouachita College, Arkadelphia
Delta—Arkansas State College, Jonesboro

CALIFORNIA

Alpha—University of Redlands, Redlands
Gamma—California Institute of Technology, Pasadena
Delta—College of the Pacific, Stockton
Epsilon—University of California at Los Angeles
Zeta—George Pepperdine College, Los Angeles
Eta—San Diego State College, San Diego
Theta—Pasadena College, Pasadena
Iota—Chico State College

COLORADO

Alpha—Colorado A. & M. College, Fort Collins
Beta—Colorado State College of Education, Greeley
Gamma—Western State College of Colorado, Gunnison

FLORIDA

Beta—John B. Stetson University, Deland

GEORGIA

Beta—University of Georgia, Athens
Gamma—University of Georgia, Atlanta Division, Atlanta

IDAHO

Alpha—College of Idaho, Caldwell
Gamma—Idaho State College, Pocatello

ILLINOIS

Alpha—Illinois Wesleyan University, Bloomington
Beta—Eureka College, Eureka
Gamma—Carthage College, Carthage
Delta—Bradley University, Peoria
Zeta—Monmouth College, Monmouth
Eta—Illinois State Normal, Normal
Iota—North Central College, Naperville
Lambda—Shurtleff College, Alton
Mu—Wheaton College, Wheaton
Nu—Western State College, Macomb
Xi—Augustana College, Rock Island
Omicron—De Paul University, Chicago
Pi—Northern Illinois State Teachers, De Kalb
Phi—Illinois College, Jacksonville
Rho—The Principia, Elmhurst
Sigma—Eastern State College, Charleston
Tau—James Millikin University, Decatur
Upsilon—Southern Illinois University, Carbondale
Chi—Greenville College, Greenville

INDIANA

Alpha—Franklin College, Franklin

IOWA

Beta—Central College, Pella
Delta—Morningside College, Sioux City
Epsilon—Simpson College, Indianola
Eta—Upper Iowa University, Fayette
Theta—Coe College, Cedar Rapids
Iota—Westmar College, Le Mars
Kappa—Buena Vista College, Storm Lake
Lambda—Dubuque University, Dubuque
Mu—Drake University, Des Moines
Nu—William Penn College, Oskaloosa
Xi—Luther College, Decorah

KANSAS

Alpha—Ottawa University, Ottawa
Beta—Washburn Municipal University, Topeka
Delta—Southwestern College, Winfield
Zeta—Kansas State Teachers College, Emporia
Eta—Kansas Wesleyan University, Salina
Theta—Kansas State Teachers College, Pittsburg
Kappa—Baker University, Baldwin City
Lambda—Sterling College, Sterling
Mu—Bethany College, Lindsborg
Nu—Fort Hays State College, Hays

12, Central was host to a debate tournament attended by 25 teams from Iowa State Teachers, Simpson, Grinnell, Drake, Iowa State, and Parsons. Central's representatives included Buwalda, Hendrichsen, Roorda, Meerdink, Carolyn Coleman, Len DeBeer, Dare De Nelsky, Howard Sylvester, and Joan Jones.

Ridin' the Provinces

Dear PKD's:

It is certainly a pleasure to work with a group who is as cooperative and helpful as you have been. When the January issue went to the printers, the news drawer was clean. Your responses to my requests brought a deluge of news, pictures, and articles. I appreciate it very much. It is this type of enthusiasm that has made PKD the largest fraternity of its kind and is also responsible for the following statements from college and university administrators regarding PKD and forensic activities: J. C. MATHEWS, North Texas State, "We are pleased with the fact that over the years we have been able to maintain this program at a high level"; M. E. SADLER, Texas Christian University, "To me this is a fundamental work, and I sincerely hope we may continuously increase our emphasis in this direction"; WILLIAM R. ROSS, Colorado State College, "We are very proud of this fraternity and the splendid work that it fosters on this campus"; EUGENE S. BRIGGS, Phillips University, "We feel quite happy over the work that is being done. We hope to increase the effectiveness of our program as the years come and go"; DON H. MORRIS, Abilene Christian College, "At ACC we have felt that one of the most effective mediums of accomplishment of the purposes of our school has been a strong program of speech, especially in the field of debate"; VOIGHT R. CROMER, Lenoir Rhyne College, "We are glad to be associated with Pi Kappa Delta and appreciate the opportunities and privileges thus received"; W. W. PARKER, "May I say that during the more than twenty years I have been here our speech department, under the leadership of Dean Forrest H. Rose, has manifested great interest in the program of Pi Kappa Delta. We feel that participation in this type of work has high educational value;" R. FRANKLIN THOMPSON, College of Puget Sound, "We

appreciate the fine leadership given by Pi Kappa Delta and also that given by our own DR. CHARLES T. BATTIN. Everyone of us at the college appreciates his leadership;" MORGAN S. ODELL, Lewis and Clark, "We appreciate having a chapter of Pi Kappa Delta. The young people seem to work hard at keeping up an active program for the fraternity;" V. R. EDMAN, Wheaton College, "We are much interested in forensics here and in the work of Pi Kappa Delta and seek to give it all the encouragement we can;" DELYTE W. MORRIS, Southern Illinois University, "The fine progress of our forensic program at Southern is indeed gratifying to me."

I HEAR—

Washington Beta is considering establishing a Toastmaster's and a Toastmistress' club on its campus to further the development of forensic speaking. Army Pvt. ALAN K. KAMIDA, Michigan State, '54, is stationed at Schofield Barracks, Hawaii. Pvt. ROBERT E. MOORE, Otterbein, '54, is stationed at the Tokyo, Japan, quartermaster depot. WILLIAM A. COWLEY, is the new director of debate at Georgetown College. Mrs. J. H. MELZER, immediate past governor of the Province of the Southeast, has transferred to the English department of the college.

All reports reaching me indicate the Redlands National Convention will be well attended and the one to attend. It looks as if a great time will be had by all. DON'T FORGET YOUR CHAPTER IS REQUIRED TO ATTEND THE REDLANDS CONVENTION IF YOU WERE NOT REPRESENTED AT THE KALAMAZOO CONVENTION IN 1953. I'll see you at Redlands and thanks again for your wonderful response and support.

Sincerely,
Your Editor

LINES FOR A SUPERIOR DEBATER

(For Don from Alabama U.)

CATHRYN GREEN

Oklahoma Southeastern State

I like to watch swift pinions of thought
Dart from your eloquent eyes—
Then grasping each premise, you weigh and deliberate,
Reasoning logically, as you revise;
And fluently you present, with coherence,
A unified argument when you arise—
Creating a pattern of keenest perception,
A red blaze that lights intellectual skies.

CHAPTER DIRECTORY

Kansas—Continued

Xi—Bethel College, North Newton
Omicron—McPherson College, McPherson

KENTUCKY

Alpha—Georgetown College, Georgetown
Beta—Centre College, Danville
Gamma—Kentucky Wesleyan College, Owensboro

LOUISIANA

Alpha—Louisiana College, Pineville
Beta—Centenary College, Shreveport
Delta—Louisiana Polytechnic Institute, Ruston
Gamma—Southwestern Louisiana Institute, Lafayette
Epsilon—Northwestern State College, Natchitoches

MAINE

Beta—University of Maine, Orono

MICHIGAN

Alpha—Kalamazoo College, Kalamazoo
Gamma—Hope College, Holland
Delta—Michigan State College, East Lansing
Epsilon—Michigan State Normal College, Ypsilanti
Eta—University of Detroit, Detroit
Theta—Central Michigan College of Education, Mount Pleasant

MINNESOTA

Alpha—Macalester College, St. Paul
Beta—St. Olaf College, Northfield
Gamma—Gustavus Adolphus College, St. Peter
Delta—Hamline University, St. Paul
Epsilon—College of St. Thomas, St. Paul
Zeta—Concordia College, Moorhead
Eta—College of St. Catherine, St. Paul
Theta—St. Mary's College, Winona

MISSISSIPPI

Alpha—Millsaps College, Jackson
Beta—Mississippi State College, State College
Gamma—Mississippi State College for Women, Columbus
Delta—Mississippi Southern College, Hattiesburg

MISSOURI

Alpha—Westminster College, Fulton
Gamma—Central College, Fayette
Delta—William Jewell College, Liberty
Zeta—Culver-Stockton College, Canton
Eta—Central Missouri State College, Warrensburg
Theta—N. E. Missouri State Teachers College, Kirksville
Iota—Southeastern State College, Cape Girardeau
Lambda—Missouri Valley College, Marshall
Mu—Tarkio College, Tarkio
Nu—Drury College, Springfield
Xi—Rockhurst College, Kansas City
Omicron—St. Louis University, St. Louis

MONTANA

Beta—Montana State College, Bozeman

NEBRASKA

Alpha—Nebraska Wesleyan University, Lincoln
Gamma—Doane College, Crete
Delta—Hastings College, Hastings
Zeta—State Teachers College, Kearney
Theta—University of Omaha, Omaha
Iota—State Teachers College, Wayne
Kappa—Midland College, Fremont

NORTH CAROLINA

Beta—Wake Forest College, Wake Forest
Delta—Lenoir Rhyne College, Hickory
Epsilon—Appalachian State Teachers College, Boone

OHIO

Alpha—Baldwin-Wallace College, Berea
Beta—Heidelberg College, Tiffin
Gamma—Hiram College, Hiram
Delta—University of Akron, Akron
Epsilon—Otterbein College, Westerville
Zeta—Marietta College, Marietta

Personalities in PKD

ROBERT C. WILLIAMS

When Robert C. Williams helped to found the Iowa Beta chapter of Pi Kappa Delta at Central College in 1914, he little dreamed that forty-one years later as president of Wisconsin State College, Whitewater, he would receive a duplicate of his original membership card as a token of the Whitewater chapter's appreciation of his assistance to the group.

Probably no one at the Pi Kappa Delta-sponsored invitational meet, held at Whitewater last December 4, was more surprised than President Williams when J. T. von Trebra, debate coach, introduced the president by presenting him with the duplicate membership card, No. 98.

That Dr. Williams took time from his administrative duties to welcome debaters and

to speak at the meet was typical of his interest in forensics at Whitewater. For, according to Dr. von Trebra, "We have a debate program at Whitewater largely because of his quiet, personal support of the program."

Dr. Williams has been interested in debate as long as he has been eligible to participate. As a high school student he was a member of the debate team. Apparently, even then he was a better than average debater, for even though he dropped out of school for a couple of weeks in the middle of the debate season, his place on the team was waiting for him when he returned.

In college he won second place in the freshman forensic contest, a victory he attributes to his ability to carry on when an electrical failure plunged the auditorium into darkness. As a result of his victory he was named to the debate team, where he debated for three years and helped to organize the Iowa Beta chapter of Pi Kappa Delta.

As a teacher and superintendent of schools in Iowa, he served as a debate coach and regularly judged high school debates. When his administrative work, first with the Iowa State Department of Public Instruction and later as a college president, took him out of the classroom, he lost for a time his close association with forensic groups. But in 1948, as president of Whitewater State college, he again started to build a forensic program, although this time he delegated the actual work to Dr. von Trebra.

Because interest in forensics had dwindled at Whitewater during World War II the debate program was dropped and the college was without any forensic activity. In December, 1948, Dr. Williams asked Dr. von Trebra, professor of social studies, to revive the program.

Today debate is an important activity on the Whitewater campus. Each year members of the squad participate in approximately fifty intercollegiate debates. To give new debaters an opportunity to debate against

ROBERT C. WILLIAMS



teams from other colleges before they enter decision competition, the Whitewater Pi Kappa Delta chapter sponsors a non-decision invitational meet early each December for five colleges in the Whitewater area. Interest in the meet has grown each year until now members of the Whitewater group are seeking means of expanding their facilities to accommodate more colleges at the meet.

Because of Dr. Williams' belief in the educational values of a forensic program, emphasis is placed on those values rather than on winning. All students who wish to participate in debate are accepted as long as they contribute to the work of the squad, and all are given an opportunity to participate in some debates. The goal of the program is to build a number of competent debaters rather than one or two excellent teams. Despite the de-emphasis on winning, the Whitewater team has tallied more wins than losses in its decision debates.

A man of many interests, Dr. Williams is a charter member of the Governor's (Wisconsin) Commission on Human Rights, established in 1945, and served for a time as chairman of the group. He is chairman of the education committee of the Whitewater Civil Defense group and is active in many civic groups.

Dr. Williams is now completing 41 years of service to education in the roles of teacher, supervisor, research director, consultant, and administrator. From 1914 to 1930 he served as superintendent of schools at Kalona, Ia.; Lamont, Ia.; and Jesup, Ia. In 1930 he became director of research for the Iowa State Department of Public Instruction, a position he held until 1939. From 1939 to 1943 he was professor of education at Superior (Wis.) State Teachers college, and he served the college as acting president from 1943-45. In 1945 he was appointed director of the guidance bureau at Superior, but he left that position the following year to become president of Wisconsin State College, Whitewater.

President Williams is a member of the American Association of School Administrators, the National Business Teacher's Association, Phi Delta Kappa, the National Education Association, the Wisconsin Education Association, and of the committee on public relations for the WEA. He is the author of numerous articles and bulletins relating to education.

RALPH A. PHELPS, JR.

Dr. Ralph A. Phelps, Jr., 32 years of age and president of Ouachita College, was born at Dallas, Texas. The oldest of six children, he attended the public schools of Dallas and graduated as valedictorian from North Dallas High School in 1939.

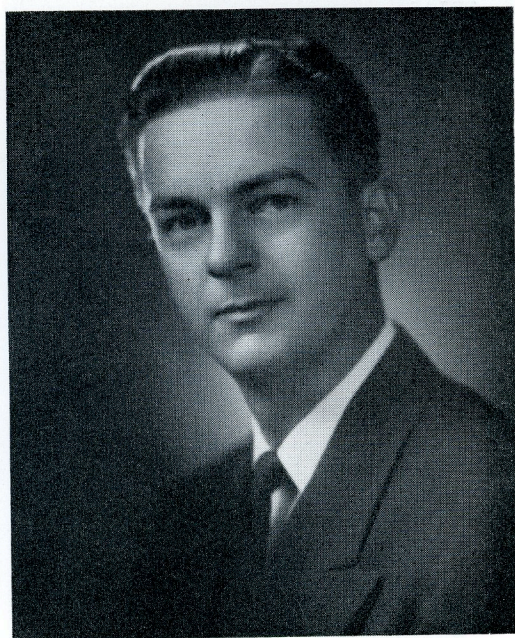
He received his Bachelor of Arts degree with honor from Baylor University in 1943 and the Master of Arts degree with honor from the same institution in 1945. In 1947 he received the Master of Theology degree and in 1949 the Doctor of Theology degree with honor from Southwestern Baptist Theological Seminary in Fort Worth, majoring in social ethics.

In 1948 he attended a summer term at the University of Wisconsin for special work in industrial relations, and in 1949 studied alcoholism at Yale University's Institute for Alcohol Studies.

His doctoral dissertation, "The Struggle for Public Higher Education for Negroes in Texas," was written under a grant of \$1,800 from the Julius Rosenwald Foundation. The dissertation dealt largely with court decisions affecting Negro education.

He is the author of *Tangled Threads* published in 1952 by the Home Mission Board of the Southern Baptist Convention. This book

DR. RALPH PHELPS, JR.



CHAPTER DIRECTORY

Ohio—Continued

- Eta—Bowling Green State University, Bowling Green
- Iota—Kent State University, Kent

OKLAHOMA

- Alpha—Oklahoma Agricultural and Mechanical College, Stillwater
- Beta—University of Tulsa, Tulsa
- Gamma—Oklahoma Baptist University, Shawnee
- Epsilon—Oklahoma City University, Oklahoma City
- Eta—East Central State College, Ada
- Theta—Southeastern State College, Durant
- Iota—Central State College, Edmond
- Kappa—Phillips University, Enid
- Lambda—Northeastern State College, Tahlequah
- Mu—Southwestern State College, Weatherford

OREGON

- Alpha—Linfield College, McMinnville
- Beta—Lewis and Clark College, Portland

PENNSYLVANIA

- Alpha—Grove City College, Grove City
- Gamma—Seton Hill College, Greensburg

SOUTH CAROLINA

- Zeta—University of South Carolina, Columbia

SOUTH DAKOTA

- Alpha—Dakota Wesleyan University, Mitchell
- Beta—Huron College, Huron
- Gamma—Yankton College, Yankton
- Delta—S. D. State College, Brookings
- Epsilon—Sioux Falls College, Sioux Falls
- Zeta—S. T. C., Northern, Aberdeen
- Eta—Augustana College, Sioux Falls

TENNESSEE

- Alpha—Maryville College, Maryville
- Gamma—State Teachers College, Johnson City
- Delta—Tennessee Polytechnic Institute, Cookeville
- Epsilon—Carson-Newman College, Jefferson City
- Zeta—Middle Tennessee State College, Murfreesboro

TEXAS

- Beta—Trinity University, San Antonio
- Delta—Howard-Payne College, Brownwood
- Epsilon—Mary Hardin-Baylor College, Belton
- Zeta—Texas Christian University, Fort Worth
- Eta—North Texas State College, Denton
- Theta—Hardin-Simmons University, Abilene
- Iota—Baylor University, Waco
- Kappa—Sam Houston S. T. C., Huntsville
- Lambda—Southwestern Texas State Teachers College, San Marcos
- Mu—Stephen F. Austin State Teachers College, Nacogdoches
- Nu—Texas A. & I., Kingsville
- Xi—Abilene Christian College, Abilene

WASHINGTON

- Alpha—College of Puget Sound, Tacoma
- Beta—Seattle Pacific College, Seattle
- Gamma—State College of Washington, Pullman
- Delta—Whitworth College, Spokane
- Epsilon—Pacific Lutheran, Parkland
- Zeta—Western Washington College of Education, Bellingham
- Eta—St. Martin's College, Olympia

WEST VIRGINIA

- Alpha—W. Va. Wesleyan College, Buckhannon
- Beta—Marshall College, Huntington

WISCONSIN

- Alpha—Ripon College, Ripon
- Beta—Carroll College, Waukesha
- Delta—State College, River Falls
- Epsilon—State College, Whitewater
- Zeta—State College, Eau Claire

is a study of social problems in the South and is in its fourth printing. *Blueprint For Tomorrow*, written for teenagers is just off the press. He is also preparing a book on Communism for the Missionary Council of the Southern Baptist Convention and a book on Ministerial ethics.

At Baylor Dr. Phelps started on a pre-law course, but entered preministerial training at the beginning of his senior year. He was a champion debater and a PKD at Baylor, where he twice was class president, editor of the *Daily Lariat*, director of publicity in 1943 and director of men in 1945.

He served on the Southwestern Baptist Theological Seminary faculty as professor of Social Ethics from 1948 until he went to Ouachita as president, October 1, 1953.

After his ordination as a Baptist minister in 1943, Dr. Phelps became associate pastor of Seventh and James Baptist Church at Waco, Texas. His later pastorates were at Lakeview Baptist Church, Waco, and First Baptist Church of Plano, Texas. He is known throughout the South for speaking in revivals and at student gatherings.

President Phelps belonged to many organizations in his University and Seminary days, being a member of Alpha Chi, Sigma Tau Delta, Alpha Kappa Delta, Pi Kappa Delta, Pi Gamma Mu, the Ministerial Alliance, and "Who's Who Among Students."

Since becoming president of Ouachita, Dr. Phelps has laid out a broad plan of improvements in the major areas of the school's program, which includes improvement and enlargement of the physical plant, a new basic plan or design of landscaping of the campus, expansion and improvement of the athletic and recreational facilities, expansion of the curriculum, increased financial assistance in the way of scholarships to students, more student activities, and an improved counseling program, and has been on a large number of speaking engagements in the state.

Dr. Phelps says he likes "people, golf, tennis, fishing, writing, speaking, and reading." He does not like "self-righteous, super-pious people, apple-polishers, incompetency, or turnips." He especially likes college students.

He married Miss Helen Kennedy of Dallas in 1942. She was an honor graduate of Baylor in the class of 1944 and has worked toward a Master's degree at Southwestern Seminary. They have two children, James Robert, three years, and a daughter, Deborah, 10 months of age.

Meet the Governors

Miss Cunera Van Emmerik

Miss Cunera Van Emmerik, governor of the Province of Missouri, is well known to PKD's. She was governor of the province, 1930-41; member of the National Council of PKD and chairman of the charter committee, 1942-47 (the first woman to serve on the National Convention); and is a member of the nominating committee for the Redlands National Convention.

She holds the A.B. degree from Central College, and the Ph.M. degree from the University of Wisconsin. She taught at Northwestern Academy, Orange City, Iowa, 1922-27, and has served as director of forensics at Central College since 1928. In addition, she served as director of alumni relations, 1944-45; and as director of publicity and alumni relations since 1945.

Miss Emmerik has been active in the Iowa Forensic Association. She has served repeatedly in one office or another, is at present vice-president of the association, and will hold the spring tournament of Iowa Forensic Association on Central's Campus, March 18-19.

MISS CUNERA VAN EMMERICK



RALPH A. MICKEN

Professor Ralph A. Micken

Professor Ralph A. Micken, Director of Forensics at Illinois State Normal University, is Governor of the Province of Illinois. Dr. Micken received his undergraduate training at Intermountain Union College, where he was active in the Pi Kappa Delta chapter. He has a Master's degree from Montana University and Ph.D. from Northwestern. He has the degree of Special Distinction in Phi Kappa Delta. Dr. Micken has specialized on research in the field of congressional debate and rhetoric, having had numerous papers published in the various journals; has been active in forums, and Radio-TV discussion panels, having directed the Butte Civic Forum in Montana, the Iowa Community Visit Forum, and the Bloomington Current Affairs Forum. He has also been active in business and professional speech training, having done personnel work for the ACM and served as sales speech counselor for the Bankers Life Insurance Company.

The Pi Kappa Delta Key

The badge of Pi Kappa Delta is the key. It is distinctive in its use of jewels to denote the degree and order earned by the wearer and because of the jewel combinations is one of the most beautiful keys designed for any organization.

The key is available in three sizes. The large or fob size is usually worn by men as a pendant from a watch-chain. Some men prefer the small or lavalier size. The women usually prefer the lavalier or the miniature size, the latter coming only with a pin attachment. A pin may be attached to either of the larger sizes but the fob does not lend itself as readily to wearing as a pin.

The keys come in bright or dull gold finish, the choice of which is a matter of preference. Special distinction members may order a key of white gold if they wish.

All keys are numbered and are engraved with the member's name or initials, and his college. The number, type, and size of key are registered in the office of the National Secretary so that at any time in the future a replacement may be ordered. The official jewelers for Pi Kappa Delta are the L. G. Bal-four Company, Attleboro, Massachusetts.

The Jewels

The jewel in the uppermost part of the key denotes the order to which the member belongs. If of the order of debate, the jewel is a pearl; of oratory, a ruby; or instruction, an emerald; any combination of two orders, a turquoise; and all three orders, a diamond. Honorary membership is indicated by a sapphire in the circle.

The jewel in the eye reveals the degree which the member has attained. The first degree, fraternity, is shown by a ruby; proficiency by an amethyst; honor by an emerald; and special distinction by a diamond. Members may wear jewels of lesser rank than that to which they are entitled and because of the greater cost of diamonds some special distinction members wear the emerald of the degree of honor.

Guard Chains and Initials

Guard chains with or without initials may be ordered for keys which are to be worn as pins. The initial is the Greek letter of the chapter to which the member belongs; e.g.,

if it is the Alpha chapter of the state the member would order the initial Alpha. There is no provision for personal initials of the member.

How to Order

All orders must be placed with the National Secretary, D. J. Nabors, East Central State College, Ada, Oklahoma. Official order blanks will be sent to each chapter for that purpose. Key prices are figured from the basic price for each of the three sizes. This basic price includes the cost of pearls and amethysts. The cost of all other jewels—rubies, sapphires, turquoises, emeralds, and diamonds—must be added to the basic price. If the order includes a pin attachment, guard chain or initial, or is of white gold, that charge must also be added. A sample figuring of a lavalier size key with pin attachment and guard chain and initial, degree of honor, order of oratory is given here:

Basic key price	\$3.50
Emerald	1.00
Ruby75
Pin Attachment	1.00
Guard chain and initial	1.50
	<hr/>
	7.75
12% tax94
	<hr/>
	8.69
Handling charge50
	<hr/>
Total cost	\$9.19

Members should be sure that the degree and order status shown on the membership card entitles them to the key requested. If not, an Advanced Standing application (Form B) should be submitted with the key order.

Handling Charge

Pi Kappa Delta levies a charge of fifty cents on each key order. This is used to pay for postage, mailing boxes and occasional loss of keys in the mail.

Rejeweling and Exchanges

Any member of Pi Kappa Delta may have the jewels changed in his key to show changes in degree or order. Full credit is allowed for the price of all jewels except pearls and amethysts when new jewels are ordered. In addi-

tion to the cost of the new jewels, there is a fifty cent rejeweling charge plus the fifty cent handling charge levied by Pi Kappa Delta.

When yellow gold keys are exchanged for white gold keys a credit allowance is made. The same allowances are made for jewels turned in on such an exchange as in rejeweling orders. If credit is expected on a yellow gold key it must be sent with the order for the white gold key.

Taxes

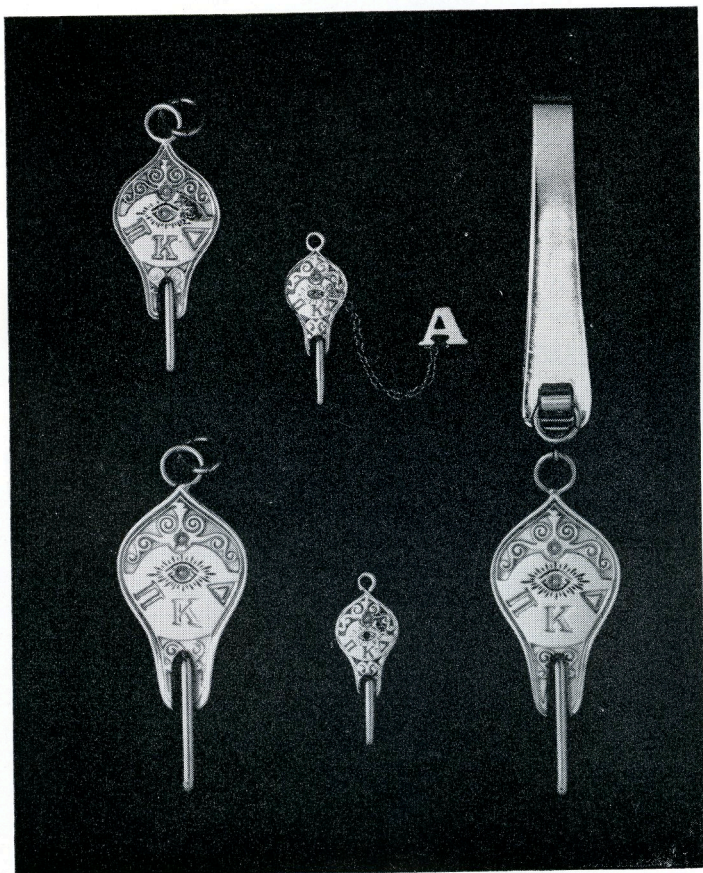
At the present time there is a Federal tax of 10% on all fraternity jewelry. Pi Kappa Delta is subject to that tax. It must be figured on all items except the handling charge and rejeweling charge. The rejeweling orders the tax must be figured on the full price of the new jewels before credits are allowed for old

jewels. The same rule applies on exchange of yellow gold keys for white gold.

Since keys are ordered from Ada, Oklahoma, a 2% Sales tax is added. If Pi Kappa Delta keys are to be paid for out of funds received through taxes by state supported institutions which are not allowed by law to pay an excise tax on such funds, a tax exemption certificate duly signed by an authorized official must accompany the order sent to the National Secretary.

Belt Loop

The Balfour Company now makes a belt loop from which a key may be suspended for men who do not wear a watch chain. This is available in sterling at \$1.12 (including tax) or in a gold finish at \$2.24 (including tax).



PRICE LIST

PI KAPPA DELTA KEYS

Large or Fob size, including pearls or amethysts.	\$ 4.25
Small or Lavalier size, with pearls or amethysts.	3.50
Miniature (key-pin), with pearls or amethysts.	3.00

Add to the above prices the following charges for other jewels and attachments

Rubies, each75
Sapphires, each50
Turquoise, each50
Emeralds, each	1.00
Diamonds, each	
large	10.00
small	8.00
for miniature key-pin	3.50

White Gold (worn by Special Distinction members only) ..	1.00
Pin Attachment with clasp for large or small keys	1.00
Guard chain for pin attachment50
Guard chain with gold initial pin (chapter Greek letter) ...	1.50

Add to all prices above

Handling charge, per key50
Charge for changing jewels in old keys50
Federal and state taxes on all items except handling charge and jewel changing charge	22%

ALLOWANCES

Gold in yellow gold keys exchanged for white gold	
Large and small size keys	1.50
Miniature	1.00

Full value on rubies, sapphires, turquoises, and emeralds
exchanged for new jewels or white gold key.

Jeweling of various degrees and orders

Degrees

Fraternity	ruby eye
Proficiency	amethyst eye
Honor	emerald eye
Special Distinction	diamond eye

Orders

Oratory	ruby circle
Debate	pearl circle
Instruction	emerald circle
Honorary membership	sapphire circle
Any two orders	turquoise circle
Three orders	diamond circle

Address all key orders to the National Secretary, D. J. Nabors,
East Central College, Ada, Oklahoma.