

VIII. SINCE THE FOURTH CONVENTION

In the weeks following the convention and before the 1922 commencements were held, no less than ten more colleges had been granted charters for local chapters, and one inactive chapter had been revived. Des Moines University, which had taken over the plant formerly owned by Highland Park College, had petitioned to have the old Iowa Gamma Chapter restored, and the charter was reissued by the National Council. This left only one inactive chapter, the Alabama Alpha, at the Alabama Polytechnic Institute. The ten new chapters established were as follows: Oklahoma Baptist University as Oklahoma Gamma; Presbyterian College, South Carolina Beta; Missouri Wesleyan, Missouri Epsilon; Saint Olaf College, Minnesota Beta; College of the Pacific, California Delta; Tusculum College, Tennessee Beta; University of Akron, Ohio Delta; Culver-Stockton College, Missouri Zeta; Oklahoma Teachers' College, Oklahoma Delta, and Centre College, as Kentucky Beta.

In the spring of 1922 the Pi Kappa Delta chapters again selected an official debate question for the following year. The proposition chosen by the vote of the chapters was as follows: "Resolved that the United States should adopt the cabinet-parliamentary form of government." In October Professor Alfred Westfall again sent a questionnaire to a large list of colleges, asking what questions they were using for this year. Of the one hundred replies received, about forty stated that they were going to use the official Pi Kappa Delta question.

One important amendment to the constitution made at the last convention changed the date upon which the new officers should assume their duties to July 1 following the convention, instead of immediately after election. On July 1, 1922, the following officers elected at the Fourth National Convention, entered upon the duties of their respective offices. National President, Charles A. Marsh, of Morningside College, now of the University of California, Southern Branch, at Los Angeles; First National Vice-president, G. W. Finley, Colorado State Teachers' College; Second Vice-president, H. C. Libby, Colby College; National Secretary-Treasurer, Alfred Westfall, Colorado Agricultural College; National Historian, Egbert Ray Nichols, University of Redlands. By an amendment to the constitution, the office of Editor of *The Forensic* was made an appointive office, whereas before the duties had been discharged by the National President. Great satisfaction was expressed when President Marsh prevailed upon former president John R. Macarthur to continue in the office of Editor, which position he had filled so eminently during the past four years. In fact, if a secret may now be told, the writer proposed the said amendment at the convention in order that it might be possible to continue Doctor Macarthur in the office of Editor, since he had announced that he would not again accept the office of National President.

January, 1922, completed the first ten years of Pi Kappa Delta, and with that date this record will be closed. At that time a number of petitions for chapters were in the hands of the Charter Committee, and the year gave promise of seeing a number of new chapters added to the roll.

Ten years! Pi Kappa Delta may justly be proud of the record which has been written. From a very small humble beginning, she has overcome the obstacles which were encountered in the early years of her history, and has already become the largest forensic honor society in the world, now having a total of seventy-five active chapters. Not only is she strong in numbers, but on account of her high ideals and purposes she is exerting an ever increasing influence over the forensic activities in the colleges of the United States. Her field for expansion is unlimited. Who can prophesy what the next ten years will bring forth!

THE FORENSIC OF PI KAPPA DELTA

Issued Four Times a Year

November, January, March, May

J. R. MACARTHUR, Editor

EGBERT RAY NICHOLS, Business Manager

Subscription Price \$1.50 a year

Subscription free to Active Members who have paid dues of\$2.00 a year

Entered as second-class matter January 26, 1916, at the postoffice at Redlands, California, under the Act of August 24, 1912.

Office of Publication, Facts Commercial Press, Redlands, California.

Address all copy to J. R. Macarthur,

Editor Pi Kappa Delta Forensic, Pasadena, California.

Series 8

MARCH, 1923

Number 4

TEN YEARS OF PI KAPPA DELTA

In the foregoing pages we have set before you some account of the beginnings of Pi Kappa Delta and of its history during the ten years of organized existence. We have been particularly fortunate in securing from Professor Nichols the detailed account of the earliest days. Every member of our Order will, we know, read it with keenest interest; every member will feel that he has a better grasp of the ideals of the organization; every member will be stimulated to greater endeavor on behalf of his local chapter and of the whole society. Ten years of Pi Kappa Delta! What volume of work, of idealism, of enthusiasm, of disappointment, of triumph, is summed up in the words. A seed germinates in the mind of one—perhaps of two—is cherished carefully and nurtured tenderly, strikes down a rootlet or two, puts out a leaflet or two, begins to grow only to be met by rude blasts, bends but does not break, the storm overpast, it rears its head proudly, ready to grow into the mighty tree. That is our Order.

EGBERT RAY NICHOLS

In reading the account of the origin of things in Pi Kappa Delta, one is more and more impressed with the fact that whereas there may have been ten National Founders, only one of them has to this day continued actively in the service of the Order. That one is Egbert Ray Nichols. For years he stuck tenaciously to his idea. In spite of disappointments, of ill health, of discouragements which would have made the average man abandon the organization, he has remained faithful to it. And the end crowns his work. In this Decennial Number of THE FORENSIC we are honoring the man to whom Pi Kappa Delta owes its existence. To have been the means of stimulating thousands of men and women to forensic endeavor, to have placed in their hands one of the greatest qualifications for leadership, to have thereby trained them for better and more effective citizenship in the

world's greatest democracy, surely this is an achievement far beyond the ordinary. And this is the contribution which has been made to his day and age by Egbert Ray Nichols.

TO THOSE PETITIONING PI KAPPA DELTA

By far the largest number of inquiries regarding Pi Kappa Delta in the history of the organization have been received by the national officers from local groups apparently intending to petition us. It takes a considerable time to act on petitions. We would suggest, therefore, that all such groups who have an expectation of securing chapters this year lose no time in presenting their petitions accompanied by the necessary credentials to Professor G. W. Finley, Greeley, Colorado, the Chairman of the Charter Committee.

A SUGGESTION

The material set before us in this issue, especially that given by Professor Nichols, is of such value that we suggest that each local chapter see that a copy of this number of THE FORENSIC is preserved either among the records of the local chapter or in the college library. It would be easy to do both.

A USEFUL BOOK

Professor W. W. Johnson of the Michigan Agricultural College has brought to our attention a volume which will be of great value to some of our debaters. It is entitled "The Kansas Court of Industrial Relations" and is written by Dr. John H. Bowers, professor in the Kansas State Normal. It is one of a most useful group of books published under the National Social Science Series by the A. C. McClurg Company of Chicago at the price of a dollar a volume.

CHAPTER LETTERS

The next issue of THE FORENSIC should contain a chapter letter from each of our seventy-five or more locals. These letters should be in the hands of the editor not later than April the first. Upon reading this notice, Mr. Local Secretary, if you have not already sent in your chapter letter, please sit down and write it forthwith. The National Secretary-Treasurer is athirst for fines and will "git yo', ef yo' don't watch out."

OUR CHAPTER ROLL

In this number we are publishing the official list of the chapters of Pi Kappa Delta with the year of installation, the location, and the total membership of each chapter since the beginning. The figures given for the membership of the individual chapters may in some cases look small. No doubt several of them are smaller than they should be owing to the fact that careless local secretaries have not always sent in to the National Treasurer the names or dues of their members. Notwithstanding this, it is a fine record. By the end of this college year, there will probably be increases in both chapters and members. This is the list that will appear in the Tenth Edition of Baird's Manual.

REMARKS FROM THE BUSINESS MANAGER OF THE FORENSIC

Having written quite enough about myself in the third person for one issue of the Forensic, I, one E. R. Nichols, rise to make a few additional remarks. As Historian it was my duty to write up the History of Pi Kappa Delta for this issue. I fell into difficulties with a multitude of jobs and a (217)

paucity of time for all of them. A better plan than the original one was then hit upon and Professor Macarthur and Professor Marsh came to my rescue and each contributed the installment to this history which he was most peculiarly fitted to write. I wish to thank them both in this public way not only for their assistance and co-operation in this instance but for the years of loyal work which they have given to Pi Kappa Delta. The strength of Pi Kappa Delta and its great success as a forensic organization are due to the many fine men and women who have rallied to the idea in the colleges where it has established chapters. However most praise and appreciation are due to men like Macarthur, Marsh, Westfall, Painter, Foth, Finley and Libby who have taken the active work of the council and carried the ideals of the founders forward. As a National Founder, and speaking in a way for them all, I wish to say that we are grateful to the men and women of Pi Kappa Delta, one and all, who have accepted our organization and made it successful, and most of all we are thankful for the fine administrations the various national councils have given to the order. Suffice it to say we as Founders are proud of Pi Kappa Delta.

The Editor of the Forensic and the National President have conspired to make this issue of the Forensic a tribute to me. I refuse to accept it without sharing honors with them. As Business Manager I have slipped this article in without the knowledge of the Editor, and have taken the liberty of putting pictures of Professor Macarthur and Professor Marsh with their sections of this history. It seems to me that this surprise on them is appropriate, and as they are both older than I am I can outrun them when they get after me.



PI KAPPA DELTA

List of chapters, year of installation, and total number of members received since installation.

No.	Year	Name of Chapter	College	Address	Membership
1	1913	Kansas Alpha	Ottawa University,	Ottawa, Kansas	86
2	1913	Iowa Alpha	Iowa Wesleyan,	Mount Pleasant, Ia.	63
3	1913	Kansas Beta	Washburn,	Topeka, Kansas	92
4	1913	Nebraska Alpha (Rechartered 1920)	Nebraska Wesleyan,	University Place	49
5	1913	Wisconsin Alpha	Ripon,	Ripon, Wisconsin	53
6	1914	Illinois Alpha	Illinois Wesleyan,	Bloomington, Ill.	50
7	1914	Kansas Gamma	State Agricultural,	Manhattan, Kans.	79
8	1914	Iowa Beta (Rechartered 1922)	Central,	Pella, Iowa	23
9	1914	California Alpha	Redlands,	Redlands, Calif.	63
10	1914	California Beta (Rechartered 1922)	Occidental,	Los Angeles, Cal.	25
11	1915	Colorado Alpha	State Agricultural,	Fort Collins, Colo.	56
12	1915	Kansas Delta	Southwestern,	Winfield, Kas.	85
13	1915	Illinois Beta	Eureka,	Eureka, Illinois	36
14	1915	South Dakota Alpha	Dakota Wesleyan,	Mitchell, So. Dakota	79
15	1915	Iowa Gamma (Rechartered 1922)	Des Moines University,	Des Moines, Ia.	32
16	1916	Alabama Alpha (Inactive)	Alabama Polytechnic,	Auburn, Ala	14
17	1916	Kansas Epsilon	Fairmount,	Wichita, Kansas	27
18	1916	Oklahoma Alpha	Agri. & Mech. Arts,	Stillwater, Okla.	16
19	1917	Kansas Zeta	State Normal,	Emporia, Kas.	52
20	1917	Iowa Delta	Morningside,	Sioux City, Ia.	75
21	1918	South Dakota Beta	Huron,	So. Dakota	45
22	1918	Colorado Beta	State Teachers,	Greeley, Colo.	43
23	1918	Michigan Alpha	Kalamazoo,	Kalamazoo, Mich.	48
24	1918	Iowa Epsilon	Simpson,	Indianola, Ia.	66
25	1919	South Dakota Gamma	Yankton,	Yankton, So. Dakota	49
26	1919	Missouri Alpha	Westminster,	Fulton, Missouri	23
27	1920	Iowa Zeta	Parsons,	Fairfield, Ia.	41
28	1920	So. Dakota Delta	So. Dakota State College,	Brookings, S. D.	31
29	1920	So. Dakota Epsilon	Sioux Falls College,	Sioux Falls, S. D.	12
30	1920	Missouri Beta	Park College,	Parkville, Mo.	26
31	1920	Oklahoma Beta	University of Tulsa,	Tulsa, Oklahoma	14
32	1920	Nebraska Beta	Cotner,	Bethany, Nebr.	19
33	1920	Nebraska Gamma	Doane,	Crete, Nebr.	14
34	1920	Nebraska Delta	Hastings,	Hastings, Nebr.	18
35	1920	Maine Alpha	Colby,	Waterville, Maine	23
36	1920	Illinois Gamma	Carthage,	Carthage, Illinois	30
37	1920	Kansas Eta	Kansas Wesleyan,	Salina, Kansas	37
38	1920	Montana Alpha	Montana Wesleyan,	Helena, Montana	18
39	1921	Ohio Alpha	Baldwin-Wallace,	Berea, Ohio	15
40	1921	Ohio Beta	Heidelberg,	Tiffin, Ohio	21
41	1921	Missouri Gamma	Central,	Fayette, Missouri	23
42	1921	Montana Beta	State Agri. College,	Bozeman, Montana	26
43	1921	Minnesota Alpha	Macalester,	Saint Paul, Minn.	31
44	1921	So. Carolina Alpha	Wofford,	Spartanburg, S. C.	31
45	1921	Michigan Beta	Olivet,	Olivet, Michigan	20
46	1921	Kansas Theta	St. Man. Train. Nor. School,	Pittsburg, Kas.	25
47	1921	Kentucky Alpha	Georgetown,	Georgetown, Ky.	17
48	1921	Illinois Delta	Bradley Polytechnic,	Peoria, Illinois	20

No.	Year	Name of Chapter	College	Address	Membership
49	1921	Michigan Gamma	Hope,	Holland, Michigan	26
50	1921	Michigan Delta	Michigan Agricultural,	East Lansing, Mich.	19
51	1921	Indiana Alpha	Franklin,	Franklin, Indiana	22
52	1921	California Gamma	Cal. Institute of Technology,	Pasadena, Cal.	28
53	1921	Texas Alpha	Southwestern,	Georgetown, Texas	15
54	1921	Illinois Epsilon	Hedding,	Abingdon, Illinois	26
55	1921	Michigan Epsilon	State Normal,	Ypsilanti, Michigan	34
56	1922	Nebraska Epsilon	Grand Island,	Grand Island, Nebr.	78
57	1922	South Dakota Zeta	Nor. Normal & Indus. Sc.,	Aberdeen, S. D.	31
58	1922	Tennessee Alpha	Maryville,	Maryville, Tennessee	17
59	1922	Missouri Delta	William Jewell,	Liberty, Missouri	19
60	1922	Washington Alpha	College of Puget Sound,	Tacoma, Wash.	21
61	1922	Ohio Gamma	Hiram,	Hiram, Ohio	8
62	1922	Illinois Zeta	Monmouth,	Monmouth Illinois	7
63	1922	Pennsylvania Alpha	Grove City,	Grove City, Pennsylvania	25
64	1922	Kansas Iota	College of Emporia,	Emporia, Kansas	24
65	1922	Iowa Eta	Upper Iowa University,	Fayette, Iowa	22
66	1922	Kansas Kappa	Baker,	Baldwin City, Kansas	10
67	1922	Oklahoma Gamma	Oklahoma Baptist,	Shawnee, Oklahoma	15
68	1922	So. Carolina Beta	Presbyterian College,	Clinton, So. Car.	13
69	1922	Missouri Epsilon	Missouri Wesleyan,	Cameron, Missouri	7
70	1922	Minnesota Beta	Saint Olaf,	Northfield, Minnesota	9
71	1922	California Delta	Col. of the Pacific,	San Jose, Calif.	14
72	1922	Tennessee Beta	Tusculum,	Greenville, Tenn.	13
73	1922	Ohio Delta	Univ. of Akron,	Akron, Ohio	7
74	1922	Missouri Zeta	Culver-Stockton,	Canton, Missouri	11
75	1922	Kentucky Beta	Centre College,	Danville, Kentucky	7
76	1922	Oklahoma Delta	Northwestern St. Teach. Col.,	Alva, Okla.	16

The following are the signatures of the Charter Members
of Pi Kappa Delta Fraternity, in ratification of the Constitution
and the substitution for Article XIII.

Egbert Ray Nichols
President, of Ripon College,
Ripon, Wis.

John A. Shields
General Secretary, of Ottawa
University, Ottawa, Kansas.

Edgar A. Vaughn
Vice President, of Kansas Agri-
cultural College, Manhattan, Kans.

J. H. Krenmyer
Historian, of Iowa Wesleyan
College, Mt. Pleasant, Iowa.

Chas. Boddy
Of Kansas Wesleyan University,
Salina, Kansas.

Frank P. Johnson
of Morningside College,
Sioux City, Iowa.

Arthur L. Crookham
of Southwestern College,
Winfield, Kans.

of Monmouth College, Monmouth,
Illinois.

H. O. Pritchard
of Cotner University, Bethany
Nebraska.

Daniel C. Lockwood
of the College of Emporia,
Emporia, Kansas.

P. H. Somerville
of Illinois Wesleyan College,
Bloomington, Ill.

of William Jewell College,
Liberty, Missouri.

A HISTORIC SCRAP OF PAPER

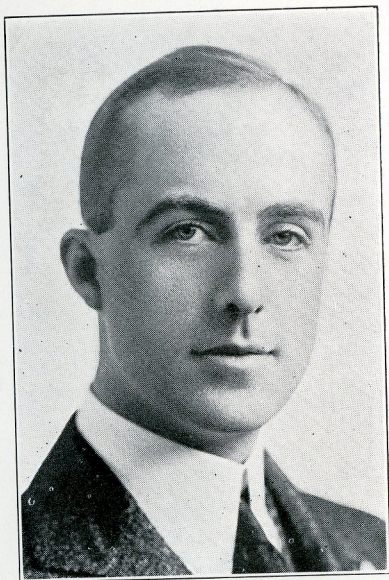
Attached to the First Constitution of Pi Kappa Delta



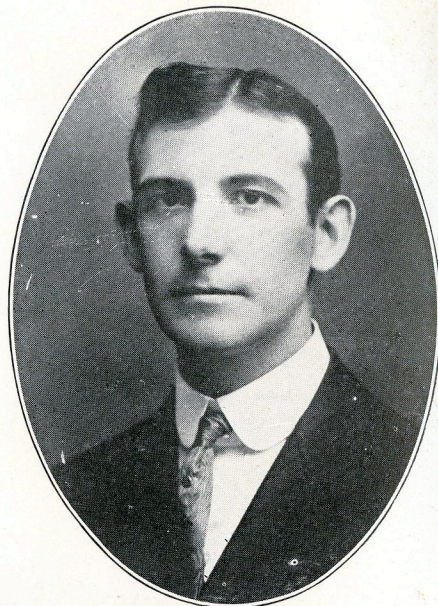
EGBERT RAY NICHOLS,
First National President and One of the Ten Founders of
Pi Kappa Delta.



JOHN R. MACARTHUR,
Second National President



ARTHUR L. CROOKHAM



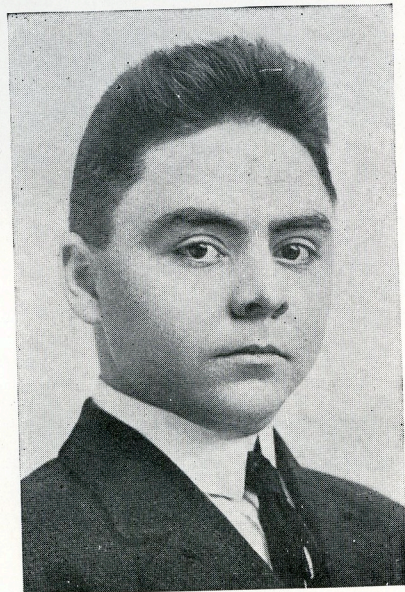
EGBERT RAY NICHOLS



H. OTIS PRITCHARD



FRANK P. JOHNSON



JOHN A. SHIELDS



EDGAR A. VAUGHAN

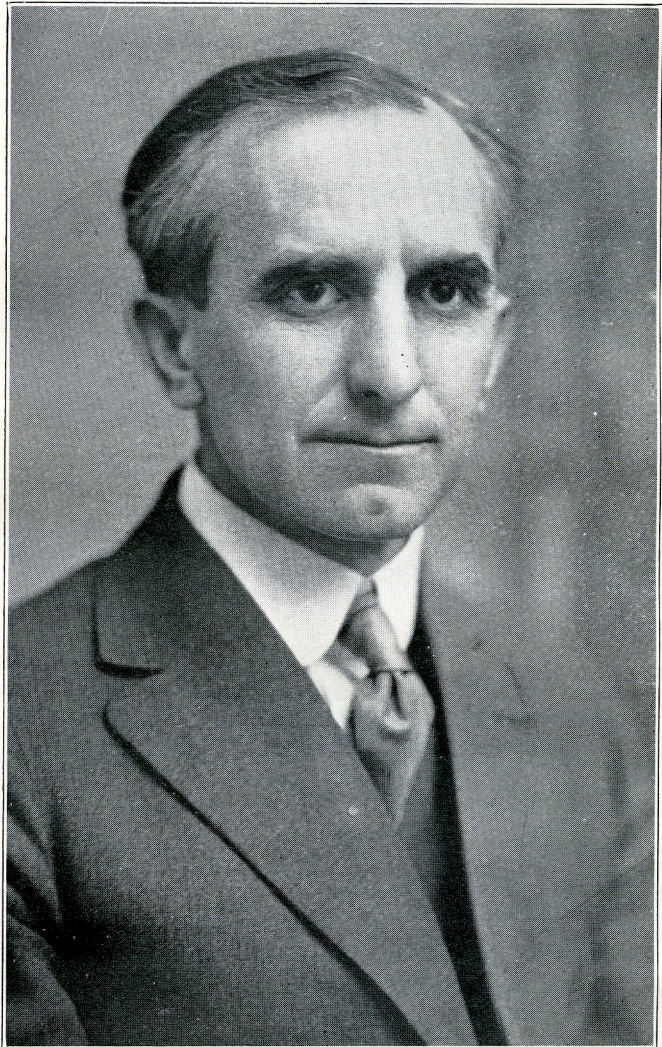


J. H. KRENMYRE

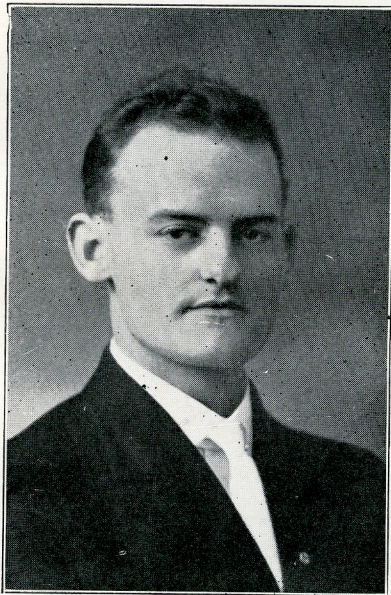


P. C. SOMERVILLE

EIGHT OF THE TEN NATIONAL LEADERS OF PI KAPPA DELTA
 (The two whose pictures are lacking are Boddy and Daniel C. Lockwood)



CHARLES A. MARSH,
Third National President



ROY PAINTER,

First National Treasurer, whose faithful work in the early days placed Pi Kappa Delta on a firm financial basis and insured the publication of The Forensic.