

Petitioning institutions which meet fully all requirements and which have been approved by the Charter and Standards Committee and by the National Council shall be granted a charter upon a majority vote of the chapters in convention or as indicated in Article V, Division C, Section 5, Paragraph (a).

When a charter has been granted by the National Organization the National Secretary shall notify the local petitioner. Upon receipt of this notification the members of the new Local Chapter shall send the charter fee and dues as provided in Article V, Division A, Section 6, to the National Secretary. The National President shall immediately appoint a member of the society to install the new chapter, and the National Secretary shall then forward the certificates of membership to the installing officer.

2. Attendance at National Convention. All institutions petitioning for a chapter of Pi Kappa Delta shall obligate themselves to send a delegate to the first National Convention following the granting of their petition.

3. Installation. The National Secretary shall furnish each new chapter with a copy of the Installation Ceremony and full instructions concerning the rules and regulations of the society and the obligations of the Local Chapter to the National Organization. The new chapter shall pay the expenses of the officer sent to conduct the installation ceremony.

4. Annual Initiation Ceremony. It shall be the practice of each chapter to require all new members to take the initiatory obligation. A ritual initiation approved by the National Organization, may be given each new member, but such initiation shall not be secret.

Amendment 90. Article IX, Section 4, line 6. Strike "may" and substitute "should."

ARTICLE X—RULES OF ORDER

1. Robert's Rules of Order shall be the authority of this society in parliamentary procedure.

ARTICLE XI—AMENDMENTS

1. This Constitution may be amended at a regular National Convention by a two-thirds vote or by a three-fourths vote in the referendum initiated by the National Council and taken as provided for in Article V, Division C, Section 4 (b).

2. Unless an amendment incorporates its own effective date, it shall be effective on August 1, following its adoption.

Amendment 91. Article XI, Section 2, line 3. Strike "August" and substitute "June."

ARTICLE XII—EMERGENCY

When, by a three-fourths vote, the National Council shall determine that an emergency exists of such gravity as to make the holding of a national convention impossible or impracticable, then and in that event, the National Council may, by a two-thirds vote take any action necessitated by such emergency, notwithstanding anything contained in this constitution; provided, however, that any ten chapters may by joining in a written request to the Council, initiate a referendum of the chapters on any action taken by the Council hereunder.

The Secretary's Page

The twenty-fifth national convention of Pi Kappa Delta promises to attract a record number of colleges and participants. Early estimates made by the one hundred chapters submitting their vote on extempore subjects indicated only one chapter definitely not planning to attend the convention. Eleven others were not certain as of November. The estimated representation from these one hundred chapters was five hundred and twenty delegates. I believe we can count on seventy-five additional chapters and a total of at least nine hundred delegates.

I would like to point up a few items of special importance as convention time draws near.

Attendance — Chapters not in attendance at Tacoma in 1965 will note Article V, Division A, Section 13 of the constitution in regard to convention attendance. Any chapter failing to have a delegate at two consecutive national conventions shall be placed on probation. Attendance is defined as answering present to roll call at not less than two business sessions of the convention and one of these must be the final session.

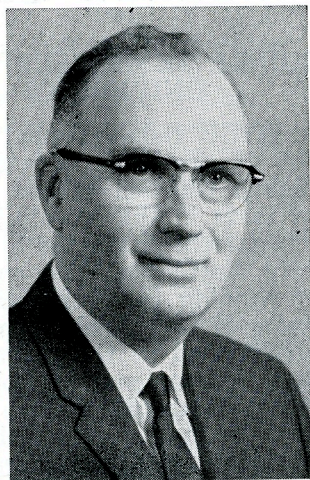
Convention and Contest Rules — Registration at Whitewater will proceed more smoothly if everyone will study the rules carefully. Note the requirements for number of judges, the entry of mixed teams in debate, the copies of orations and the convention fees. Check the eligibility of all contestants.

Entry Forms — These will be mailed from the national office on January 25th. You will be asked to return the requested forms so they are postmarked not later than February 24th. Send the entry form to the national office and send the meal and housing reservation form to Whitewater.

Registration — The registration desk will open in Whitewater at 8:30 a. m. on Monday, March 27 and it will close at 6:30 p. m. The effective work of our contest committees demands that we enforce this deadline. Make your travel arrangements in time to check in before 6:30 p. m. Most of our chapters sponsor one or more tournaments and know the problems encountered by late entry forms and late registrants. Use the phone if you cannot avoid a cancellation or a late arrival.

Voting Delegate — If you haven't already appointed your official voting delegate, now is the time. It is the responsibility of each chapter to have a well-informed delegate. Considerable attention should be given to reviewing the basic information concerning the purpose and organizational structure of Pi Kappa Delta. Only by conscientious preparation in advance can a delegate represent his chapter effectively on the floor of the assembly.

Charter Presentation — On Monday evening charters will be presented to several new chapters and to some which are being reactivated. Also, we expect to present the first charters to a few Graduate Chapters. This occasion is important not only to the new chapters but to all of us. We should make a special effort to be on time for the 7:00 p. m. assembly to welcome them into Pi Kappa Delta.



LARRY NORTON

★★★★★★★★★ CHAPTER NOTES ★★★★★★★★★★

MIDDLE TENNESSEE STATE UNIVERSITY

The MTSU Debate Squad has begun the '66-'67 season on a winning note. The squad finished as the only undefeated team in the varsity division of the tournament conducted by Mississippi State University (see enclosed picture), winning the first place trophy. The team of Gail Colebrooke and Janet Brown finished as the top affirmative team while the team of Bob Freeman and Gary Bickford finished as the top negative team. All four debaters won superior ratings as speakers. The following week, the team of Freeman and Bickford rated as the top affirmative team in the tournament conducted by Western Kentucky University, but lost in the finals to Murray State University's first place negative team — thus finishing 2nd overall in the tournament.

Other tournaments attended through the month of November included the Mid-Continent Debate Tournament at Rockhurst College in Kansas City, the Dixie Debate Tournament sponsored by Mercer University in Macon, Georgia, and an exhibition debate with the Atlanta "Feds," a debate team composed of two inmates of the Federal Penitentiary in Atlanta, Georgia.

Tournaments remaining on the schedule for this year include trips to Greenville College (Illinois), Harding College, Vanderbilt University, Murray State University, Spring Hill College (Mobile), and the national PKD tournament. MTSU is sponsoring two tournaments — the annual MTSU Junior Tournament for relatively inexperienced debaters, and the tournament of the Tennessee Intercollegiate Forensic Association.



UNIVERSITY OF MAINE

Last year was the most successful in the history of University of Maine forensics. Maine debaters participated in 210 decision debates against over 90 different schools, winning 126 while losing 84 for a winning percentage of 60%. With last year's young squad back intact, Maine, in its first tournament at B. U., came home with a second place trophy. Things certainly are looking good for this year.

This year's officers of Maine's Beta Chapter of Pi Kappa Delta are: Howard Cody, President; Larry Cole, Vice-President; Charles Spencer, Sec.-Treas.; and Bruce Fleming, Corresponding Sec. Our chapter has planned a fund-raising dance for after Christmas vacation and is now making arrangements for a "big name" concert this spring. A big portion of this money will be used to insure our sending a large delegation to White-water in March.

PACIFIC LUTHERAN UNIVERSITY

The Washington Epsilon chapter of Pi Kappa Delta started the year off with the annual High School Student Congress. Pi Kappa Delta president and Congress Director, Lynn Still headed a steering committee of three and a total force of some 40 students from the debate squad and the Pacific Lutheran student body. The congress, where students write, debate, and vote on bills in the same manner as the Federal Congress, has been nurtured by Professor Karl these past 18 years till there are now 150 participants and 150 observers yearly. The project is taken on by the chapter in an attempt to provide high schools with an insight to the legislative processes and to offer speech squads a varied bill of tournaments.

The chapter is currently investigating the possibilities of a standing committee of members to aid the forensic programs in different local secondary schools. The members would aid the

high schools in either the inspiration or the growth of speech activities.

With the deadline nearing for amendments to the national Pi Kappa Delta constitution and with Professor Karl serving as the head of the revision committee, the local chapter plans to take up the discussion of the new constitution in January. Also in January, Pi Kappa Delta will sponsor a campus-wide oratorical contest. Chairmen Bob Klavano and Mrs. Paula Cowley will direct the tournament which gives students a chance to present their views on a topic in a persuasive manner and to win a little cash to ease the long cold winter.

With the activity calendar rapidly filling, the Washington Epsilon chapter wishes all her sister chapters the best as they embark on the new year of 1967.

WISCONSIN STATE UNIVERSITY WHITEWATER

Elected to serve as president of the Wisconsin Epsilon Chapter of Pi Kappa Delta for the second semester of this school year and the first semester of next year was Stephen Dickmann, who is currently serving as one of the two student representatives to the National Council. Also elected at the December meeting were Roy Leschinsky as vice president, Beverly Kaeser, who was re-elected as recording secretary and treasurer, Dan Niemuth as corresponding secretary, and William Thompson as parliamentarian.

New members recently accepted as members of the Epsilon Chapter are William Thompson, Judethe Kaye Verhaalen, and Timothy E. Laatsch.

Highlights of the year thus far have been the Keynoter Tournament in October, and the Pre-Christmas Tournament held on December 9 and 10 which saw 34 schools represented on this campus. Carrying home first and second place honors in the varsity division were

the University of South Dakota and Purdue University respectively while top winners in the novice division were Kansas State University, Manhattan, Kansas, and Indiana University, Bloomington, Indiana.

The Robert C. Williams Top Speaker Award was presented Jane Hydahtl of the University of South Dakota. This award is presented annually to the top speaker in the varsity division.

All our attention is now being focused on making the National Convention the best ever held, and we sincerely look forward to seeing all Pi Kappa Delta members in Whitewater for the 1967 National Convention.

ADAMS STATE COLLEGE

In May of this year the Colorado Delta Chapter of Pi Kappa Delta initiated twelve new members. They are Don Moon, Ralph Turano, Cynthia Anderson, Connie Garrett, Carlos Suarez, Warren Cheery, Dennis Grenmeyer, Ronald Inouye, Judi Tuxhorn, Sue Evans, and Steve Page. Later this year John Maestas became a member.

Also in May was the Annual Pi Kappa Delta Banquet at which time Dr. Fred J. Plachy, retiring president of Adams State College, was honored guest. Steve Page, past president of Colorado Delta Chapter, presented Doctor and Mrs. Plachy with a fine gift.

This fall new officers were elected which included Ralph Turano, president; John Maestas, V. P.; Judi Tuxhorn, secretary; Sue Evans, treasurer; and Dennie Grenmeyer, corresponding secretary.

At the present time the chapter is busy preparing for the Annual Adams State College High School Forensics Festival to be held March 3 and 4, which is expected to be one of the largest tournaments in the region.

The chapter is also busily engaged in fund raising to care for the cost of attending the Pi Kappa Delta National Convention in Whitewater, Wisconsin.

The advisor for the Colorado Delta Chapter is Dr. Grant M. Herbstruth, Director of Forensics at Adams State College, Alamosa, Colorado.

CENTRAL MICHIGAN UNIVERSITY

Our roll of members carried over from last year shows twenty-six members. To this were added eleven new members at our December Christmas party; the initiation followed a delicious pork chop dinner. Our local chapter has decided to take in oral interpretation students and four readers were added to our chapter at this event. In addition three speech faculty members were initiated in the order of instruction: Dr. Melvin Donaho, Dr. Bill Skillman, and Mr. John Butts. Members were urged to participate in the annual CMU oratory contest in January.

KEARNEY STATE COLLEGE

Nebraska Zeta Chapter, at Kearney State College hosted a fine six state debate and speech tournament, on the Kearney campus, November 4 and 5, 1966. Feature of the tournament was the presentation of the Harold L. Ahrendts Traveling Trophy, which was established this year in honor of Dr. Ahrendts and his long service to Pi Kappa Delta and to the speech program at Kearney State College.

Nebraska Zeta Chapter will host Nebraska's largest high school speech and debate tournament, on the dates of January 6 and 7, 1967. Mr. Robert Kunkel, Director of Forensics and Mr. Don Tibbetts, Associate Director of Forensics, have charge of this event on the Kearney campus.

Kearney speakers and debaters are experiencing another active year with approximately twenty tournaments being attended. The Nebraska Intercollegiate Forensic Association Tournament, which is an annual contest, will be held on the Kearney campus this year in the month of March.

Alumni News

BOWLING GREEN STATE UNIVERSITY

From the office of Ray Yeager, exalted past president of PKD, comes news of former debaters who are now teaching and/or doing graduate work. In each instance the places where the individuals earned their A. B. degrees and their Pi Kappa Delta membership is indicated in parentheses:

Three of last year's seniors are coaching in high school. Chapter president Dave Brunner is debate coach at Canton McKinley, while Pat Parker and Peg Riggle are assisting at other schools . . .

Returning to high school teaching after completing the M.A. at Bowling Green are Norbert Mills (Winona State) and Roger Kinney (B.G.) . . .

Taking college teaching positions after completion of the M.A. at B.G. are: Carolyn Clark (Ill. Wesleyan) at New Platz, N. Y.; John Fisk (E. Ill.) at Winona State; Mervin Ziegler (B.G.) at William Jennings Bryan, Tenn.; and Priscilla Porter (N.W. Missouri) at Ohio Northern . . .

Kathy Leahy (B.G.) took a position with General Electric's public relations department in Detroit after completing her M.A. here . . .

Last year's seniors now working on the M.A. at B.G. are Steve Sasala, Don Splittorf and Jack Winget. Also on the M.A. are Ann Williams (Findlay), Leanne Omwake Wolff (Heidelberg), Sonny Bahs (B.G.), Dave Nassar (B.G.) and Jerry Wadian (B.G.) . . .

Stu Tubbs (B.G.) is a doctoral candidate in speech at Kansas. Doctoral fellows in Bowling Green's new Ph.D. program are Jack Barwind (Carroll, Wisc.), Bob Gratz (Lamar Tech), Ron Ruble (Otterbein), and Sue Radliffe (Hope) . . .

HOPE COLLEGE

Carol Van Lente and Sue Radliffe, both of whom were at the National at Tacoma, are doing graduate work in speech. Carol is at Central Michigan University and Sue is at Bowling Green State University.

ILLINOIS WESLEYAN UNIVERSITY

The continuing quest — an answer to the question: What do ex-debaters do for a living?

Added evidence comes from Illinois Wesleyan.

Darby Eubank Brackenhoff is now teaching speech in Enid, Oklahoma.

Mary Dell Chilicote works in the personnel department of Marshall Field & Company in Chicago.

Richard McClannahan is a commercial pilot for United Airlines.

Dave Norris is working for the Normal State Bank in Normal, Illinois.

LINFIELD COLLEGE

How far west can you go and still do graduate work in the United States? "Hap" Mahaffey has the answer:

Three of our grads, Dennis and Edwina Alexander, and Paul Butcher, are at the University of Hawaii this year. Satwant Goel is at the University of California, Santa Barbara.

Craig Singletary of the faculty has an N.D.E.A. fellowship to work on his doctorate at the University of Oregon. He is being replaced by Robert Chamberlain, formerly of Cascade College. Two former part-time instructors are back assisting in Fundamentals. Marilyn Reiher, who finished her degree at Temple University, is taking the Forensic job at the University of Puget Sound.

LOUISIANA POLYTECHNIC INSTITUTE

E. R. Minchew reports that "One of our superior debaters, Suzann Fox, a 1966 Pi Kappa Deltan, was married in August and has enrolled at Louisiana State University, where her husband, Wade Dorman, is a student."

Michael B. Minchew, Delta Chapter of La., M. A. at La. Tech in 1961, is now a graduate assistant at University of Southern Illinois, and is working toward the completion of the Ph.D. in Public Address.

NORTH TEXAS STATE UNIVERSITY

Donna Butts '65 (recently became Mrs. Bob Foard) is the new debate coach at Spring Branch High School in Houston, after a very successful year at Waco High. Her successor at Waco is another NTSU Pi Kap, Gale Gooch '66.

Ben Sheppard '65 is enrolled in the law school at the University of Texas. His ex-colleague, Bill Duff '64, was a member of the SMU moot court team that reached the national finals last year. Lee Lawrence '66 and Curtis Loveless '66 are other PKDs now at the University of Texas Law School.

Jim Weaver '63 is completing the Ph.D. at Michigan State, and is serving as assistant Director of Forensics. John Swaney '63, who was instrumental in the fine showing of Southern Cal last year, is again an assistant coach there while doing graduate work.

Paul Edwards and Ludy Goodson joined the ranks of debaters who found other mutual interests, married, and have now moved to the University of California.

ROCKY MOUNTAIN COLLEGE

The post-graduate activities of several former members of Montana Alpha are reported by Bob Lyon:

Dick McCann is working for the Bureau of Reclamation in the state of Washington, Otto Larsen is a public school teacher in South Dakota, Dave Traxler is working in Oregon, and Jenni Gebhart married and is living in Bozeman, Montana, where he husband Herb Alely is attending college.

SIoux FALLS COLLEGE

South Dakota Epsilon is energized by a hot man-wife duo. Dr. Perry W. Patterson is chairman of the Department of Speech and Drama, while Mrs. P (Mary Alice) is Director of Forensics.

It is no wonder that their graduates "are doing well for themselves, and for others we trust."

Bruce Rickerson (SFC, 1966) is Director of Forensics at the Parker High School, Parker, S. D.

Ray Novak (SFC, 1966) is teaching speech and drama at Humboldt, S. D. High School.

Phyllis Bartels Kirschenmann (SFC, 1966) is teaching speech at Freeman, S. D. High School.

Mary Alice noted that "We are also proud of Paul Sorenson, another Pi Kap member, who has been privileged to spend his Junior Year Abroad at the American University at Beirut, Lebanon. We look forward to having him back in 1967-68."

UNIVERSITY OF SOUTHERN MISSISSIPPI

Five seniors, and members of Pi Kappa Delta, entered graduate school this fall. Martha Johnson is a graduate assistant at Auburn. Jesse Delia and David Swanson are at the University of Kansas. Paula Price is a graduate assistant in debate at Florida State University as is Danny Smith at the University of Southern Mississippi. Harry Mills is Director of Forensics at William Carey College while working on a master's at Southern.

Pi Kappa Delta Directory

The directory is as accurate as the information we have permits it to be. If the chapter line is blank, the secretary had received no reply to his request for this data by the time the material was sent to the editor.

State and College and Province No.	Chapter Pres.	Sponsor	Address
ALABAMA			
BETA—Alabama College—9			Montevallo
ARIZONA			
ALPHA—Northern Arizona Univ.—4	Jeff Tierman	David A. Williams	Flagstaff
BETA—Arizona State Univ.—4	Larry Stephan	William H. Stites	Tempe
GAMMA—University of Arizona—4		Jack H. Howe	Tucson
ARKANSAS			
ALPHA—Henderson State Teachers College—6		Pearl Galloway	Arkadelphia
BETA—Ouachita College—6		Jim Campbell	Arkadelphia
ZETA—Harding College—6	Connie Taylor	Evan Ulrey	Searcy
CALIFORNIA			
ALPHA—University of Redlands—4		E. R. Moulton	Redlands
GAMMA—California Institute of Technology—4		Herbert W. Booth	Pasadena
DELTA—University of the Pacific—4		Paul H. Winters	Stockton
EPSILON—U.C.L.A.—4		Candy G. Trimble	Los Angeles
ZETA—Pepperdine College—4		Vance Carruth	Los Angeles
ETA—San Diego State College—4		Jack Mills	San Diego
THETA—Pasadena College—4		James H. Jackson	Pasadena
IOTA—Chico State College—4		Lloyd S. Jones	Chico
LAMBDA—Los Angeles State College—4		Robert Kully	Los Angeles
MU—Humbolt State College—4		Ronald R. Young	Arcata
NU—Fresno State College—4	Tony Perella	David Natharius	Fresno
XI—Loyola University—4	Eric Hansen	George A. Schell	Los Angeles
OMICRON—San Fernando Valley State College—4	Mary Shiffrin	Don Cameron	Northridge
PI—California State College—4		Lee E. Granell	Fullerton
RHO—California State Polytechnic College—4		David A. Church	Pamona
SIGMA—California Western Univ.—4		J. W. Richen	San Diego
TAU—California State College—4		Harold Barrett	Hayward
COLORADO			
ALPHA—Colorado State Univ.—1	Douglas Phelps	James R. Irvine	Fort Collins
BETA—Colorado State College—1	Jeff Blain	Richard Crawford	Greeley
GAMMA—Western State College—1		Ted Johnson	Gunnison
DELTA—Adams State College—1	Donald Moon	Grant Herbstruth	Alamosa
EPSILON—Southern Colorado State College—1	James Campbell	Michael S. Hanna	Pueblo
CONNECTICUT			
BETA—Southern Connecticut State College—11		Mary Jo Clark	New Haven
FLORIDA			
BETA—Stetson University—9	Jay Mechling	Martha Womack	DeLand
IDAHO			
ALPHA—College of Idaho—10		Lester McCrery	Caldwell
GAMMA—Idaho State University—10	Judith Kirkland	W. N. Corbin	Pocatello
DELTA—Northwest Nazarene College—10		Earl R. Owens	Nampa
ILLINOIS			
ALPHA—Illinois Wesleyan			

State and College and Province No.	Chapter Pres.	Sponsor	Address
Univ.—3	Beverly Meyer	Marie J. Robinson	Bloomington
BETA—Eureka College—3	Tom Menger	Donald Littlejohn	Eureka
DELTA—Bradley University—3	Jeff Hawkins	George Armstrong	Peoria
ZETA—Monmouth College—3		T. L. Fernandez	Monmouth
ETA—Illinois State University—3	Gail Snyder	John K. Boaz	Normal
THETA—McKendree College—3		Annette Mulvaney	Lebanon
IOTA—North Central College—3		Glenn Reddick	Naperville
MU—Wheaton College—3	Marlys Prigge	Edwin A. Hollatz	Wheaton
NU—Western Illinois Univ.—3	Jacob Graves	Robert Holton	Macomb
XI—Augustana College—3	John Holcomb	Martin J. Holcomb	Rock Island
PI—Northern Illinois Univ.—3		Dorothy Bishop	DeKalb
RHO—Principia College—3		Clayton D. Ford	Elsah
SIGMA—Eastern Illinois Univ.—3		Elwood Tame	Charleston
TAU—Millikin University—3		Paul Wenger	Decatur
UPSILON—Southern Illinois Univ.—3		Marvin Kleinau	Carbondale
PHI—Illinois College—3		Raymond Ford	Jacksonville
CHI—Greenville College—3		David R. Sprague	Greenville
PSI—University of Illinois, Chicago Circle—3		Carol Berthold	Chicago
OMEGA—Olivet Nazarene College—3		Mac McCombs	Kankakee
ALPHA ALPHA—Elmhurst College—3		John E. Gow	Elmhurst
ALPHA BETA—MacMurray College—3		Frank T. Alusow	Jacksonville
INDIANA			
ALPHA—Franklin College—7		J. Daniel Kocher	Franklin
IOWA			
BETA—Central College—2	Jack Farrell	Cunera Van Emmerik	Pella
DELTA—Morningside College—5	John Lane	Hazel Heiman	Sioux City
EPSILON—Simpson College—2	Neil Groeppinger	R. J. deLaubenfels	Indianola
ETA—Upper Iowa University—8		Barry Alexander	Fayette
THETA—Coe College—2	George Harper	Tom Jenness	Cedar Rapids
IOTA—Westmar College—5		James R. Fletcher	LeMars
KAPPA—Buena Vista College—5	Rick Lampe	Jack Ragsdale	Storm Lake
LAMBDA—University of Dubuque—8	Edward Simmers	Michael Greenspon	Dubuque
MU—Drake University—2	Dan McCrary	John A. Johnson	Des Moines
XI—Luther College—8	William Smith	Harold C. Svanoe	Decorah
OMICRON—Wartburg College—8	Sue Stieber	Beverly Ferguson	Waverly
KANSAS			
ALPHA—Ottawa University—1	Harold Matney	Michael S. Twedt	Ottawa
BETA—Washburn University—1		Gordon Zimmerman	Topeka
DELTA—Southwestern College—1		Donald K. Enhelm	Winfield
ZETA—Kansas State Teachers College—1			Emporia
THETA—Kansas State College—1	Arthur Malle	H. Francis Short	Pittsburg
IOTA—College of Emporia—1		Anthony J. Clark	Emporia
KAPPA—Baker University—1		Duane V. Smith	Baldwin
LAMBDA—Sterling College—1	Marcy Tonish	Clayton C. Campbell	Sterling
MU—Bethany College—1			Lindsborg
NU—Fort Hays State College—1	Sharla Barber	D. L. Miller	Hays
XI—Bethel College—1		William E. Juhnke	North Newton
OMICRON—McPherson College—1		Mrs. Alma Moore	McPherson
PI—Tabor College—1			Hillsboro
KENTUCKY			
ALPHA—Georgetown College—9		John M. Cornett	Georgetown
BETA—Centre College—9		West T. Hill	Danville
LOUISIANA			
ALPHA—Louisiana College—6		Ernest E. Hall	Pineville
BETA—Centenary College—6	Alton McKnight	Ruth Alexander	Shreveport
GAMMA—University of Southwestern Louisiana—6	James Hayes	Roy D. Murphy	Lafayette
DELTA—Louisiana Polytechnic Institute—6	Patrick Briney	E. R. Minchew	Ruston

State and College and Province No.	Chapter Pres.	Sponsor	Address
EPSILON—Northwestern State College—6		Mrs. D. L. Graham	Natchitoches
ZETA—Southeastern Louisiana College—6			Hammond
ETA—McNeese State College—6		W. J. Casey	Lake Charles
MAINE			
BETA—University of Maine—11		Wofford G. Gardner	Orono
MARYLAND			
ALPHA—Towson State College—11		Phyllis Bosley	Baltimore
MICHIGAN			
ALPHA—Kalamazoo College—7		Richard S. Jackson	Kalamazoo
GAMMA—Hope College—7		M. Harold Mickle	Holland
EPSILON—Eastern Michigan Univ.—7		Thomas Murray	Ypsilanti
ETA—University of Detroit—7	Carl Marlinga	Thomas H. Usher	Detroit
THETA—Central Michigan Univ.—7	David Joslyn	Gilbert Rau	Mount Pleasant
IOTA—Ferris State College—7		Richard K. Cronk	Big Rapids
KAPPA—Northern Michigan Univ.—7			Marquette
LAMBDA—Detroit Institute of Technology—7	John Lafer	Marsha Last	Detroit
MINNESOTA			
ALPHA—Macalester College—8		Roger K. Mosvick	St. Paul
BETA—St. Olaf College—8		Kenneth G. Wilkens	Northfield
GAMMA—Gustavus Adolphus College—8		William Robertz	St. Peter
DELTA—Hamline University—8		John L. Meyer	St. Paul
EPSILON—College of St. Thomas—8		James C. McCarthy	St. Paul
ZETA—Concordia College—8		Allwin D. Monson	Moorhead
THETA—St. Mary's College—8	Doug Eichten	Mona McMahon	Winona
IOTA—Univ. of Minnesota—Duluth—8		Jackson R. Huntley	Duluth
KAPPA—Moorhead State College—8	Tom Hanson	Mrs. D. A. Scott	Moorhead
MISSISSIPPI			
ALPHA—Millsaps College—9	Rick Fortenberry	Orvel E. Hooker	Jackson
BETA—Mississippi State Univ.—9	Bill Alsop	Thomas Brad Bishop	State College
GAMMA—Mississippi State College For Women—9	Agnes Willoughby	Harvey Cromwell	Columbus
DELTA—University of Southern Mississippi—9		Ben A. Chappell	Hattiesburg
EPSILON—Mississippi College—9		H. B. Todd	Clinton
ZETA—Delta State College—9		John Faulkner	Cleveland
MISSOURI			
ALPHA—Westminster College—2		Calvin H. Stoney	Fulton
GAMMA—Central Methodist College—2		Fred Rhoads	Fayette
DELTA—William Jewell College—2	Chris Herring	Georgia Bowman	Liberty
ZETA—Culver-Stockton College—2		Gwen Anderson	Canton
ETA—Central Missouri State College—2	Charlotte Bemboom	Harold P. Sampson	Warrensburg
THETA—Northeast Missouri State College—2	James Wolf	Sherod J. Collins	Kirksville
IOTA—Southeast Missouri State College—2	Ron Patterson	Fred B. Goodwin	Cape Girardeau
KAPPA—Northwest Missouri State College—2	Ronald Wineinger	George Hinshaw	
LAMBDA—Missouri Valley College—2		Jerry Winsor	Maryville
MU—Tarkio College—2		Rita Ludwig	Marshall
NU—Drury College—2		Robert L. Wilhoit	Tarkio
XI—Rockhurst College—2		John Cragan	Springfield
PI—University of Missouri at Kansas City—2	Russell Usnick	Harold W. Cook	Kansas City
RHO—Evangel College—2	Charlotte Crabtree	Nonna Childress Dalan	Springfield
MONTANA			
ALPHA—Rocky Mountain College—10	Rodney Davis	Robert H. Lyon	Billings

State and College and Province No.	Chapter Pres.	Sponsor	Address
BETA—Montana State University—10	Dick Gibson	L. A. Lawrence	Bozeman
GAMMA—Eastern Montana College—10		Tom O'Brien	Billings
DELTA—Carroll College—10		C. W. Huber	Helena
NEBRASKA			
ALPHA—Nebraska Wesleyan University—1	Gordon Simmons	Jessie Rousselow	Lincoln
GAMMA—Doane College—1		Clinton E. Nelson	Crete
DELTA—Hastings College—1		Robert Kunkell	Hastings
ZETA—Kearney State College—1		Roy J. Betzer	Kearney
ETA—Chadron State College—1		Duane L. Aschenbrenner	Chadron
THETA—University of Omaha—1		Brice J. Wilkinson	Omaha
IOTA—Wayne State College—1			Wayne
KAPPA—Midland Lutheran College—1		Glenn D. Smith	Fremont
NEW MEXICO			
ALPHA—New Mexico State Univ.—4		Phil McFarland	Las Cruces
BETA—Eastern New Mexico Univ.—6		Eldon Walker	Portales
NEW YORK			
ALPHA—Ithaca College—11		Christine Berlin	Ithaca
BETA—State University College—11		John Kirm	Geneseo
NORTH CAROLINA			
DELTA—Lenoir Rhyne College—9		Russell Brown	Hickory Hill
EPSILON—Appalachian State Teachers College—9	Cristine Curtis	Bradford L. Kinney	Boone
NORTH DAKOTA			
BETA—Minot State College—10		Dennis E. Winters	Minot
GAMMA—Dickinson State College—5	Beverly Agnew	Winifred Stump	Dickinson
OHIO			
ALPHA—Baldwin-Wallace College—7	Tom Ross	James A. Ross	Berea
BETA—Heidelberg College—7	Robert Heydorn	John T. Auston	Tiffin
DELTA—University of Akron—7		James Grissinger	Akron
EPSILON—Otterbein College—7		K. Wayne Wall	Westerville
ZETA—Marietta College—7			Marietta
ETA—Bowling Green State University—7	Greg Gardner	Raymond Yeager	Bowling Green
IOTA—Kent State University—7	John Nemeth	Linda Irwin	Kent
KAPPA—Findlay College—7		Jack Borkhardt	Findlay
LAMBDA—University of Dayton—7		Jean Johnning	Dayton
MU—Mount Union College—7	Ed March	Robert W. Tripp	Alliance
NU—Youngstown University—7		Maryann Hartman	Youngstown
OKLAHOMA			
ALPHA—Oklahoma State Univ.—6		Fred Tewell	Stillwater
GAMMA—Oklahoma Baptist Univ.—6			Shawnee
EPSILON—Oklahoma City Univ.—6		J. D. Hoover	Oklahoma City
ETA—East Central State College—6		D. J. Nabors	Ada
THETA—Southeastern State College—6		Douglas Duke	Durant
IOTA—Central State College—6	Debbie McWhirter	Barbara Norman	Edmond
KAPPA—Phillips University—6	Roger Klingman	John E. Baird	Enid
MU—Southwestern State College—6		James D. Sill	Weatherford
NU—Panhandle A&M College—6		James H. Roach	Goodwell
XI—Bethany Nazarene College—6		Charles R. Harrison	Bethany
OREGON			
ALPHA—Linfield College—10	Carmel Toolson	R. D. Mahaffey	McMinnville
BETA—Lewis and Clark College—10		Neil Sabin	Portland
GAMMA—Portland State College—10	Marlene A. Young	Ben Padrow	Portland
DELTA—University of Portland—10		Paul S. Melhuish	Portland

State and College and Province No.	Chapter Pres.	Sponsor	Address
PENNSYLVANIA			
ALPHA—Grove City College—11		William Teufel	Grove City
DELTA—Bloomsburg State College—11		Melville Hopkins	Bloomsburg
EPSILON—Geneva College—11		Ross Andrusko	Beaver Falls
ZETA—California State College—11		R. Cowles-	California
ETA—Clarion State College—11		E. Coursey	Clarion
		Roger Hufford	
SOUTH DAKOTA			
ALPHA—Dakota Wesleyan University—5	John R. Bittner	Matthias C. Campbell	Mitchell
BETA—Huron College—5		Richard C. Gossweiler	Huron
GAMMA—Yankton College—5		A. P. Schenk	Yankton
DELTA—South Dakota State University—5	Pam Nordstrom	Joseph R. Farnham	Brookings
EPSILON—Sioux Falls College—5		Mrs. P. W. Patterson	Sioux Falls
ZETA—Northern State College—5	James Walter	Harold Widvey	Aberdeen
ETA—Augustana College—5		Clara Chilson Lee	Sioux Falls
IOTA—Black Hills State College—5		Arthur F. Prosper	Spearfish
KAPPA—Southern State College—5	Eugene Plihal	Charles L. Roegiers	Springfield
LAMBDA—South Dakota School of Mines—5		H. H. Wells	Rapid City
TENNESSEE			
ALPHA—Maryville College—9		Arda Walker	Maryville
GAMMA—East Tennessee State University—9		Richard A. Hardin	Johnson City
DELTA—Tennessee Technological University—9	Jim White	William K. Floyd	Cookeville
EPSILON—Carson-Newman College—9		R. F. Conklin	Jefferson City
ZETA—Middle Tennessee State University—9	Gary Bickford	David Walker	Murfreesboro
THETA—David Lipscomb College—9		Carroll B. Ellis	Nashville
IOTA—Tennessee Wesleyan College—9		John S. Eckman	Athens
TEXAS			
GAMMA—East Texas State University—6	Suzanne Cochran	C. L. Farr	Commerce
DELTA—Howard Payne College—6		Cordell Parker	Brownwood
EPSILON—Mary Hardin-Baylor College—6		Ruth Williams	Belton
ZETA—Texas Christian University—6	Mike Hadley	Dave Matheny	Fort Worth
ETA—North Texas State University—6	Elaine Yarbrough	William DeMougeot	Denton
THETA—Hardin Simmons University—6	Charles Dunn	Raymond Bailey	Abilene
IOTA—Baylor University—6	Kenneth King	Glenn R. Capp	Waco
MU—Stephen F. Austin College—6		Robert Capel	Nacogdoches
NU—Texas A&I College—6	Barbara Graham	Donna R. Tobias	Kingsville
XI—Abilene Christian College—6		Edward M. Brown	Abilene
OMICRON—University of Houston—6	Rusty McMains	William B. English	Houston
PHI—Lamar State College—6	Don Hood	Arnold C. Anderson	Beaumont
CHI—Midwestern University—6		Carroll Hickey	Wichita Falls
PSI—Texas Western College—4			El Paso
OMEGA—West Texas State University—6	Laura Edler	Robert Boyd	Canyon
ALPHA ALPHA—Texas A&M University—6	David Gay	Carl Kell	College Station
ALPHA BETA—Texas Lutheran College—6	Donald Kraemer	C. L. Trainor, Jr.	Seguin
ALPHA GAMMA—McMurry College—6		Muriel Burress	Abilene

State and College and Province No.	Chapter Pres.	Sponsor	Address
VERMONT			
ALPHA—Norwich University—11	Peter Reid	Seth C. Hawkins	Northfield
VIRGINIA			
BETA—Old Dominion College—9	Steve White	Paul Dicklin	Norfolk
WASHINGTON			
ALPHA—University of Puget Sound—10	Owen B. Robinson	Marilyn Reiher	Tacoma
BETA—Seattle Pacific College—10		William Hansen	Seattle
DELTA—Whitworth College—10	Joan Quall	Mark W. Lee	Spokane
EPSILON—Pacific Lutheran University—10	Lynn Still	Theodore O. H. Karl	Tacoma
ZETA—Western Washington State College—10	Linda Jacobson	Lynn Engdahl	Bellingham
ETA—St. Martin's College—10			Olympia
THETA—Whitman College—10	Malcolm Higgins	Dean F. McSloy	Walla Walla
IOTA—Gonzaga University—10		Robert Tanksley, S. J.	Spokane
WEST VIRGINIA			
BETA—Marshall University—7	Mike Engle	B. W. Hope	Huntington
GAMMA—Morris Harvey College—7	Greta Y. Hereford	Roselyn L. Freeman	Charleston
WISCONSIN			
ALPHA—Ripon College—3		Wayne C. Mannebach	Ripon
BETA—Carroll College—3		Harold C. Larson	Waukesha
GAMMA—Wisconsin State Univ.—8		Joseph Mazza	Oshkosh
DELTA—Wisconsin State Univ.—8	Grant Steves	John A. Oostendorp	River Falls
EPSILON—Wisconsin State University—3	John Schedel	Edna Sorber	Whitewater
ZETA—Wisconsin State University—8	Marguerite Knight	Grace Walsh	Eau Claire
ETA—Wisconsin State Univ.—8	Dale A. Young	T. N. Smith	Platteville
THETA—Carthage College—3	Andrea Marsh	Robert Wm. Evans	Kenosha
IOTA—Wisconsin State Univ.—8	Wayne Pietz	Howard S. Heise	Superior
KAPPA—Stout State Univ.—8	Susan Emeott	John W. Fisk	Menomonie

New Members of Pi Kappa Delta

CALIFORNIA STATE POLYTECHNIC

39920 Gloria Jean Henne

COLLEGE OF EMPORIA

39921 Craig Steven Crago

39922 J. Anne Lee

39923 Laurence M. Straus

SAN DIEGO STATE COLLEGE

39924 Stanley Klein

39925 James G. McKinney

UNIVERSITY OF MISSOURI—

KANSAS CITY

39926 James Hicks

39927 J. Roger Mortimer

FORT HAYS KANSAS STATE COLLEGE

39928 Sharla Barber

BLOOMSBURG STATE COLLEGE

39929 Barbara Loewe

HEIDELBERG COLLEGE

39930 Mark Riddle

HOPE COLLEGE

39931 Raymond Alan Fylstra

39932 Darlene Hansen

FORT HAYS KANSAS STATE COLLEGE

39933 Henry G. Wolf

WISCONSIN STATE—EAU CLAIRE

39934 JoAnn Peterson

SOUTHERN COLORADO STATE COLLEGE

39935 Budge Threlkeld, Sr.

HEIDELBERG COLLEGE

39936 C. Linda Williams

NORTHWEST NAZARENE COLLEGE

39937 Stephen P. Thomas

CENTRAL MICHIGAN UNIVERSITY

39938 Saba Kla Williams

UNIVERSITY OF DUBUQUE

39939 David H. Adams

39940 H. Edwin Simmers

39941 Joanne Tillotson

MARSHALL UNIVERSITY

39942 Michael J. Farrell

NORTHERN STATE COLLEGE

39943 James M. Walter

MOORHEAD STATE COLLEGE

39944 Hazel Scott

ADAMS STATE COLLEGE

39945 John Maestas

BRADLEY UNIVERSITY

39946 Allen Weitzel

PRINCIPIA COLLEGE

39947 James Williams Chamberlain

39948 James L. Evertts

39949 David Bruce Fanger

39950 Robert Harry Keasey

39951 William L. Manchee

39952 John Russell Meldorf

39953 Jeffrey Darrell Vincent

FORT HAYS KANSAS STATE COLLEGE

39954 Beverly A. Claassen

39955 William Kenton Gilbert

39956 Kirk P. Musselman

39957 Dixie L. Westervelt

ARIZONA STATE UNIVERSITY

39958 Mike Haase

39959 Linda Hicks

39960 Wallace Larson

39961 Nicholette Mandigo

39962 Bruce Meyerson

39963 John Pacilio, Jr.

39964 David Stamat

WISCONSIN STATE—PLATTEVILLE

39965 Carol K. Zelle

EVANGEL COLLEGE

39966 Allan Caldwell

39967 Dwight Colbaugh

39968 Charlotte Crabtree

39969 Wedge Crough

39970 Nonna Childress Dalan

39971 Lynette Gamble

39972 Karen Goerky

39973 Gloria Karmarkovic

39974 LaRue Riecks

39975 Carl Sgro

39976 Paul Wray

UNIVERSITY OF REDLANDS

39977 Don Paul Abbott

39978 Nelson Charles Dometrius

39979 John Michael Hutchinson

39980 Stuart Maurice Wahrenbrock

WISCONSIN STATE—EAU CLAIRE

39981 Robert Craig Bahr

39982 David G. Cyr

39983 Ronald Guerink

39984 Bruce Frederick Hanneman

39985 Dennis Lee Loney

39986 Robin Dundgren

39987 Daniel Martin

39988 Sandra E. Rowley

39989 Sandra Siebert

39990 Clifton M. Sorenson

39991 Joseph Weaver

39992 Paul Zavada

CARTHAGE COLLEGE

39993 Dudley V. Riggie

39994 Harold H. Lentz

LEWIS AND CLARK COLLEGE

39995 Diana Crane

39996 Jim Foster

39997 Mary Krehbiel

39998 L. Ralph Longden

39999 Brian Mount

40000 Anne Spencer

SOUTHWESTERN COLLEGE

40001 John Norman Esche

40002 Cheri Jeanne Moberly

NORTHWEST NAZARENE COLLEGE

40003 William Kenneth Harmaning

WISCONSIN STATE—WHITEWATER

40004 William Charles Thompson

McMURRY COLLEGE

40005 Bartie Sue Alexander

40006 Barbara East

40007 Eldon Eugene Mathis

40008 Danny Duane Pitzer

40009 William Mack Waldrip

ARIZONA STATE UNIVERSITY

40010 Steve Sabo

GEORGETOWN COLLEGE

40011 Brenda Mae Bailey

40012 Mary Katherine Cornett

40013 William I. Dorsey

40014 Randall W. Fields

40016 Larry Dayne Insko

40015 Paul D. Higgins

40017 Karen Sue White

MOUNT UNION COLLEGE

40018 Bette Frances Jones

UNIVERSITY OF HOUSTON

40019 Charlotte Beller

40020 Martha Anne L. Bonner

40021 John Barry Brewer

40022 Selina Mary Margaret Cobb

40023 Paul Anthony Colby

40024 Dvosha Gayle Cullick

40025 James Earl Davies

40026 Robert Lee Denman

40027 Blake Frank

40028 Delwin D. Fullen

40029 Harold Lonnie Howard Harper

40030 Elliott Hebert

40031 Eddie Lasko

40032 Daniel W. Martin

40033 Eddie Massey

40034 Russell Hugh McMains

40035 Mike Miller

40036 Deborah Mildred Nuckols

40037 Jeannene Ann Patterson

40038 David Paul Seikel

40039 Alan Gale Selik

40040 Vickie Tribble

40041 Gail Wileen Wallace

40042 Junior Lee Ware

STATE UNIVERSITY COLLEGE—GENESEO

40043 Nanci Celli

40044 Lewis J. DiCaterino

40045 Marcia Ann Fisk

40046 Harvey Allen Friedland

40047 Norma H. Jordan

40048 John F. Kirn



THE ART OF PERSUASION —BEAUTIFUL AND JUST

Second Class
POSTAGE PAID
Bozeman, Montana

Michael S. Twedt
Ottawa University
Ottawa, Kansas 66067

10