

rison, Augustana, Illinois; 5, Robert Boyd, Linfield; 6, Kenneth Ross, Akron.

Group B. 1, C. J. Humphrey, Baylor; 2, Louis Sandine, Pacific; 3, Robert Lado, Rollins; 4, John Liner, Gustavus Adolphus; 5, Henry H. Kubik, Jr., Monmouth; 6, W. M. Garrouette, East Texas Teachers.

Group C. 1, Otis Aggerk, Jr., Macomb; 2, Herschell Abbott, Simpson; 3, Edward Nervig, Augustana, South Dakota; 4, Russell Van Dyke, Hastings; 5, Albert Gilbertson, Dubuque; 6, Lawrence Hall, Michigan State.

FINALS

1. Delmar Nuetzman, Nebraska Wesleyan, "Steel Spike."
2. Otis Aggerk, Jr., Macomb, "Shadows."
3. Herbert Shuman, Colby, "A Plea for Reason."
4. Robert Lado, Rollins, "The Tragedy of Spain."
5. Herschell Abbott, Simpson, "It Might Happen To You."
6. C. J. Humphrey, Baylor, "Believe It or Not."

MEN'S ORATORY

JUDGES' RANKINGS

Rank	College	Preliminary	Totals	Semi-Finals	Totals	Finals	Totals
1.	Macomb	1 2 1 2 3 3 4 2 3	21	2 1 1 3 2	30	1 1 1 2 4 6 1	46
1.	Nebraska Wesleyan	1 7 1 2 1 7 1 1 1	22	4 1 1 1 4	33	2 2 2 1 2 2 2	46
3.	Simpson	1 1 1 1 2 1 1 3 1	12	1 2 4 2 5	26	6 6 6 3 3 3 4	57
4.	Rollins	2 4 3 1 1 1 1 2 3	18	4 4 2 3 2	33	4 3 5 4 1 5 5	60
4.	Colby	3 3 1 1 2 4 4 1 2	21	3 3 2 4 2	35	3 4 4 5 5 1 3	60
6.	Baylor	2 1 3 2 2 2 4 4 4	24	1 2 5 1 1	34	5 5 3 6 6 4 6	69
7.	Pacific	1 1 3 2 2 2 5 1 5	22	3 1 6 2 3	37		
7.	Augustana, S. D.	6 6 5 1 1 2 2 3 1	27	6 4 2 1 1	41		
9.	Gustavus Adolphus	4 5 1 1 4 5 2 3 2	27	2 3 1 5 5	43		
9.	Hastings	2 2 6 1 1 3 3 4 1	23	3 3 5 5 4	43		
11.	William Jewell	2 1 2 1 1 5 3 5 6	26	1 5 5 6 1	44		
12.	Akron	6 1 1 1 5 1 3 1 6	25	2 6 3 5 6	47		
12.	Augustana, Illinois	4 1 4 3 3 6 2 1 4	28	6 4 4 2 3	47		
14.	Linfield	5 3 2 2 3 4 3 4 3	29	5 2 6 3 5	50		
15.	Dubuque	5 4 4 4 4 1 1 3 1	27	5 6 3 4 6	51		
17.	East Texas	1 5 1 1 3 5 1 7 3	27	5 6 4 6 4	52		
15.	Michigan State	3 2 2 5 7 3 2 1 4	29	4 5 6 6 3	51		
18.	Monmouth	6 1 1 5 3 1 5 4 3	29	6 5 3 4 6	53		
19.	Jamestown	3 1 7 4 1 1 4 3 6	30				
19.	Sioux Falls	4 2 2 2 4 7 1 5 3	30				
21.	Drake	1 4 2 4 4 3 6 2 5	31				
21.	Millsaps	4 2 3 3 6 5 3 3 2	31				
21.	Western Union	8 3 3 4 4 3 2 2 2	31				
24.	Redlands	3 8 2 4 4 4 2 3 2	32				
25.	Franklin	4 3 4 3 6 1 3 6 3	33				

Rank	College	Preliminary	Totals
25.	Yankton	4 2 2 6 3 2 1 8 5	33
27.	Hardin-Simmons	2 5 4 4 1 5 2 6 5	34
27.	Heidelberg	6 3 5 3 1 5 1 6 4	34
29.	North Carolina State	3 6 7 3 3 1 4 3 6	35
30.	Eureka	8 1 8 5 5 4 2 2 1	36
30.	Hope	2 4 4 2 5 7 5 5 2	36
30.	Kent	8 4 3 4 2 4 4 2 5	36
33.	Aberdeen	6 7 5 4 2 2 6 2 3	37
33.	Pittsburg	3 2 3 8 3 6 7 2 3	37
33.	St. Thomas	2 4 2 5 4 4 7 5 4	37
33.	Wheaton	5 8 8 3 2 4 3 3 1	37
37.	Cape Girardeau	3 5 5 2 2 2 6 6 7	38
37.	Colorado State	7 7 6 6 4 3 2 1 2	38
39.	Park	4 7 3 3 7 1 7 6 1	39
40.	Kirksville	7 6 4 4 2 3 6 4 4	40
40.	Otterbein	3 7 6 5 1 6 6 1 5	40
42.	River Falls	8 3 4 5 5 6 4 1 5	41
43.	Concordia	1 5 2 7 8 3 6 4 7	43
44.	Illinois State Normal Univ.	2 3 7 5 7 4 7 5 4	44
44.	Wake Forest	8 3 3 3 6 8 5 6 2	44
46.	San Marcos	1 7 5 5 7 5 3 4 8	45
46.	South Dakota State	3 2 7 2 7 6 6 7 5	45
46.	South Dakota Wesleyan	2 4 6 3 5 6 6 7 6	45
49.	Central, Iowa	5 5 5 6 6 8 3 7 2	47
49.	Quachita	5 5 7 7 6 7 1 8 1	47
51.	DeKalb	5 3 4 7 5 6 7 5 6	48
52.	Hays	4 6 5 6 6 6 5 5 6	49
52.	Luther	6 6 6 6 4 7 5 5 4	49
52.	Puget Sound	6 4 5 7 8 2 4 8 5	49
52.	Westminster	7 6 7 5 5 2 7 3 7	49
56.	Bethany	7 7 7 7 3 5 7 6 7	50
56.	Georgetown	7 4 5 6 5 4 5 7 7	50
58.	North Central	8 5 6 6 7 3 4 4 8	51
59.	Transylvania	1 8 8 6 7 2 8 6 6	52
60.	Montana State	6 5 4 8 6 8 7 5 7	56
61.	Kalamazoo	4 6 6 8 8 7 8 8 4	59
61.	Madison	5 8 8 7 5 6 7 7 6	59
61.	Southwestern	5 6 6 7 7 5 8 7 8	59
64.	Idaho	7 8 8 7 6 7 6 4 7	60
64.	Maryville	7 7 7 6 7 7 5 7 7	60
66.	Kansas Wesleyan	7 8 8 7 6 7 5 6 7	61
67.	Ottawa	6 6 6 8 8 8 8 7 8	65

Men's Extemporaneous Speaking

ROUND ONE

The numbers indicate the order in which the contestants placed, not that in which they spoke.

Group A. 1, Arthur Langland, Dakota Wesleyan; 2, W. Swensen, Ottawa; 3, James Logan, Redlands; 4, Sidney Rand, Concordia; 5, John E. Cribbett, Illinois Wesleyan; 6, Harvey Marsh, Ouachita College.

Group B. 1, Jack Mathews, Heidelberg; 2, James Bliss, Nebraska Wesleyan; 3, James Borr, Jamestown; 4, George Greenfield, Idaho; 5, Wendell Niles, Hope; 6, Phil Rensvold, Madison; 7, Stanley Wilson, Washburn; 8, Tom Ely, Colorado State.

Group C. 1, Livingston Witten, Missouri Central; 2, Kenneth Greer, Michigan State; 3, Jack de Sousa, Franklin; 4, John Gadbold, Millsaps; 5, Kenneth Bickford, Colby; 6, Howard Lyman, Rollins; 7, Douglas Dunham, Yankton; 8, Homer Steiner, Akron.

Group D. 1, C. J. Humphrey, Baylor; 2, Lee Davis, Eureka; 3, Frank Smits, Central, Iowa; 4, Oscar Clarke, Doane; 5, Homer Brooks, Ozarks; 6, Clarke Owens, Southwestern; 7, Erwin Farley, Pacific.

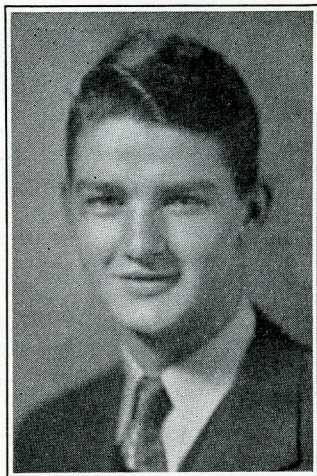
Group E. 1, Kenneth Taylor, Wheaton; 2, Howard Smith, Simpson; 3, Arnold Kramer, Maryville; 4, Alphus Christensen, South Dakota State; 5, Dugold W. Hudson, Presbyterian; 6, Keith Boling, Pittsburg; 7, Elmer Bennet, Greeley State.

Group F. 1, Donald Holley, Illinois State Normal University; 2, George Schroder, Park; 3, Alvin Gilbertson, Dubuque; 4, William Ault, Kent; 5, Elwyn Claude, Oklahoma A. & M.; 6, North E. West, Battle Creek; 7, Melvin Ostlin, Bethany; 8, Hensley McCown, East Texas.

Group G. 1, Carl Lundquist, Sioux Falls; 2, Jack Hays, Tulsa; 3, Arthur Auble, Hastings; 4, Nathaniel Singer, Western Union; 5, Gordon Torgerson, Macalester; 6, Robert Deane, Hays; 7, John Opitz, McKendree; 8, J. C. McLendon, Transylvania.

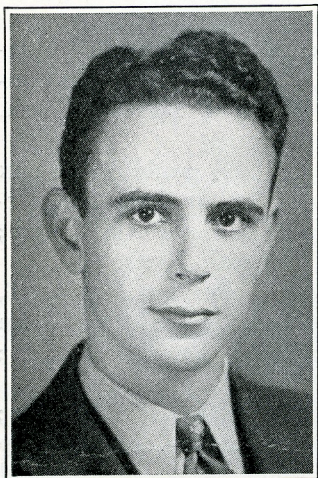
Group H. 1, Avery Lee, Hardin-Simmons; 2, Howard Harpham, Alva; 3, John Simmons, Drake; 4, Gordon Mondt, St. Olaf; 5, Price Philbrick, William Jewell; 6, H. P. McSwain, North Carolina State; 7, Paul Urone, Western State.

Group I. Newell Brinks, Upper Iowa; 2, Eugene Worrell, Wake



NEIL SABIN
Winner of the Amateur Hour
Contest
State Teachers College,
Tennessee Gamma

Special distinction in debate. After dinner speaker. President of the student body. Played football. "I didn't do so well in debate at Topeka. But after I met this Mr. J. D. Coon of South Dakota, I felt that my time in coming to the convention had not been altogether wasted. I could go back to Tennessee and tell "mammy" and "pappy" I had seen a Republican."



ALFRED W. MINISH
Senator. Republican
Georgetown College,
Kentucky Alpha

At the Legislative Assembly Mr. Minish served as chairman of the Committee on Commerce, Manufacturing, and Labor. He introduced the Senate Bill No. 1, "an enabling act for a Department of the Consumer." This was the first bill to pass both houses. Mr. Minish is president of his chapter. He plans to study law.

Forest; 3, Philip Banks, Aberdeen; 4, Francis Camelin, Gustavus Adolphus; 5, Kenneth Phifer, Centre; 6, Hudnall Harvey, Missouri Valley (tie); 6, Arthur Shanley, Bowling Green (tie); 8, Phillip Schug, North Central.

Group J. 1, Bob Capshaw, Edmond; 2, Wilson Nolle, San Marcos; 3, Fred Harber, Oklahoma Baptist; 4, Arthur Gumbrell, DeKalb; 5, Don Schroder, Huron College; 6, Paul Priebe, Kearney State Teachers; 7, Francis Hand, Hamline.

Group K. 1, Wyman Wunkes, Augustana, South Dakota; 2, Robert Short, St. Thomas (tie); 2, Frank Grover, Linfield (tie); 4, John Reinemund, Augustana, Illinois; 5, Donald Simpson, Kalamazoo; 6, Webb Smith, S. W. Louisiana Institute; 7, Robert Byrd, Puget Sound; 8, Roy Huffman, Montana State.

ROUND TWO

Group A. 1, Robert Short, St. Thomas; 2, Arthur Auble, Hastings; 3, Fred Harber, Oklahoma Baptist; 4, Philip Schug, North Central; 5, H. R. McSwain, North Carolina State; 6, Harvey Marsh, Ouachita.

Group B. 1, James Logan, Redlands; 2, Carl Ludquist, Sioux Falls; 3, Eugene Worrell, Wake Forrest; 4, Arthur Gumbrell, DeKalb; 5, Price Philbrick, William Jewell; 6, William Ault, Kent; 7, Robert Byrd, Puget Sound; 8, Tom Ey, Colorado State.

Group C. 1, Jack Hays, Tulsa; 2, Wilson Nolle, San Marcos; 3, Wendell Niles, Hope; 4, Hudnall Harvey, Missouri Valley; 5, John Reinemund, Augustana, Illinois; 6, Avery Lee, Hardin-Simmons; 7, Kenneth Bickford, Colby.

Group D. 1, Howard Harpham, Alva; 2, George Greenfield, Idaho; 3, Homer Brooks, Ozarks; 4, Donald Simpson, Kalamazoo; 5, Philip Banks, Aberdeen; 6, John E. Cribbett, Illinois Wesleyan; 7, Paul Priebe, Kearney; 8, Kenneth Greer, Michigan State.

Group E. 1, Erwin Farley, Pacific; 2, Don Schroeder, Huron; 3, W. Swenson, Ottawa; 4, Elmer Bennet, Greeley State; 5, James Borr, Jamestown; 6, Roy Huffman, Montana State; 7, Arthur Shanley, Bowling Green.

Group F. 1, Stanley Wilson, Washburn; 2, Elwyn Claude, Oklahoma A. & M.; 3, Jack De Sousa, Franklin; 4, Dugold W. Hudson, Presbyterian; 5, Wyman Wunkes, Augustana, South Dakota; 6, Frank Smits, Central, Iowa; 7, Bob Capshaw, Edmond.

Group G. 1, Frank Grover, Linfield; 2, James Bliss, Nebraska Wesleyan; 3, Arthur Lanland, Dakota Wesleyan; 4, Lee Davis, Eureka; 5, North West, Battle Creek; 6, J. C. McLendon, Transylvania; 7, Howard Lyman, Rollins; 8, Howard Smith, Simpson.

Group H. 1, Gordon Torgeson, Macalester; 2, Kenneth Taylor, Wheaton; 3, Livingston Witten, Central, Missouri; 4, Phil Rensvold, Madison; 5, Clark Owens, Southwestern; 6, Sidney Rand, Concordia; 7, Alvin Gilbertson, Dubuque; 8, Paul Urone, Western State.

Group I. 1, Donald Holley, Illinois State Normal; 2, Nathaniel Singer, Western Union; 3, Gordon Mondt, St. Olaf; 4, Keith Bolince, Pittsburg; 5, Oscar Clarke, Doane; 6, Kenneth Taylor, Centre; 7, Douglas Dunham, Yankton.

Group J. 1, Francis Gamelin, Gustavus Adolphus; 2, Arnold Kramer, Maryville; C. J. Humphrey, Baylor; 4, John Oppitz, McKendree; 5, John Simmons, Drake; 6, Homer Steiner, Akron; 7, Melvin Ostlin, Bethany.

Group K. 1, Newell Brink, Upper Iowa; 2, Robert Deane, Hays; 3, Jack Mathews, Heidelberg; 4, Alphas Christenson, South Dakota State; 5, George Schrader, Park (tie); 5, Francis Hand, Hamline (tie); 7, Webb Smith, Southwest Louisiana Institute.

ROUND THREE

Group A. 1, Carl Lundquist, Sioux Falls; 2, Howard Harpham, Alva; 3, Keith Bolince, Pittsburg; 4, Harvey Marsh, Ouachita; 5, George Schrader, Park; 6, Wendell Niles, Hope; 7, Lee Davis, Eureka.

Group B. 1, Kenneth Taylor, Wheaton; 2, Avery Lee, Hardin-Simmons; 3, Melvin Ostlin, Bethany; 4, Frank Smits, Central, Iowa; 5, Arthur Auble, Hastings; 6, Kenneth Green, Michigan State; 7, Arthur Shanley, Bowling Green; 8, Tom Ely, Colorado State.

Group C. 1, Donald Holley, Illinois State Normal University; 2, Howard Smith, Simpson, 3, Erwin Farley, Pacific; 4, Kenneth Bickford, Colby; 5, Robert Deane, Hays; 6, Bob Capshaw, Edmond; 7, Philip Banks, Aberdeen; 8, Price Philbrick, William Jewell.

Group D. 1, John Oppitz, McKendree; 2, Dugold Hudson, Presbyterian; 3, Frank Grover, Linfield; 4, Don Schrader, Huron; 5, Hudsonall Harvey, Missouri Valley; 6, Alvin Gilbertson, Dubuque; 7, Homer Brooks, Ozarks; 8, H. R. McSwain, North Carolina State.

Group E. 1, Eugene Worrell, Wake Forest; 2, North West, Battle Creek; 3, Wyman Wumkes, Augustana, South Dakota; 4, Sidney Rand, Concordia; 5, Nathaniel Singer, Western Union; 6, Elmer Bennett, Greeley State; 7, Paul Priebe, Kearney.

Group F. 1, Elwyn Claude, Oklahoma A. & M.; 2, Wilson Nolle, San Marcos; 3, Jack Mathews, Heidelberg; 4, John Simmons, Drake; 5, Arthur Langland, Dakota Wesleyan; 6, Gordon Torgeson, Macalester; 7, Roy Huffman, Montana State; 8, Philip Schug, North Central.

Group G. 1, Newell Brink, Upper Iowa; 2, Gordon Mondt, St.

Olaf; 3, Arthur Gumbrell, DeKalb; 4, Homer Steiner, Akron; 5, Phil Rensvold, Madison; 6, J. C. McClendon, Transylvania.

Group H. 1, W. Swenson, Ottawa; 2, Francis Gamelin, Gustavus Adolphus; 3, John Reinemund, Augustana, Illinois; 4, Fred Harber, Oklahoma Baptist; 5, James Bliss, Nebraska Wesleyan; 6, Douglas Dunham, Yankton; 7, Paul Urone, Western State.

Group I. 1, C. J. Humphrey, Baylor; 2, Stanley Wilson, Washburn; 3, John E. Cribbet, Illinois Wesleyan; 4, Livingston Witten, Missouri Central; 5, Robert Byrd, Puget Sound; 6, Francis Hand, Hamline; 7, Kenneth Phifer, Centre.

Group J. 1, James Logan, Redlands; 2, James Borr, Jamestown; 3, Robert Short, St. Thomas; 4, Alphus Christenson, South Dakota State; 5, Howard Lyman, Rollins; 6, William Ault, Kent; 7, Oscar Clarke, Doane.

Group K. 1, Jack Hays, Tulsa; 2, Clark Owens, Southwestern; 3, George Greenfield, Idaho; 4, Jack De Sousa, Franklin; 5, Arnold Kramer, Maryville; 6, Webb Smith, Southwest Louisiana Institute.

SEMI-FINALS

Group A. 1, Jack Mathews, Heidelberg; 2, Arnold Kramer, Maryville; 3, Eugene Worrell, Wake Forest; 4, Avery Lee, Hardin-Simmons; 5, Howard Harpham, Alva; 6, Donald Holley, Illinois State Normal University; 7, Frank Grover, Linfield.

Group B. 1, Carl Lundquist, Sioux Falls; 2, Newell Brink, Upper Iowa; 3, Kenneth Taylor, Wheaton; 4, Wilson Nolle, San Marcos; 5, W. Swenson, Ottawa; 6, Gordon Mondt, St. Olaf; 7, Livingston Witten, Central, Missouri.

Group C. 1, Jack Hays, Tulsa; 2, Francis Gamelin, Gustavus Adolphus; 3, C. J. Humphrey, Baylor; 4, George Greenfield, Idaho; 5, James Logan, Redlands; 6, Robert Short, St. Thomas.

FINALS

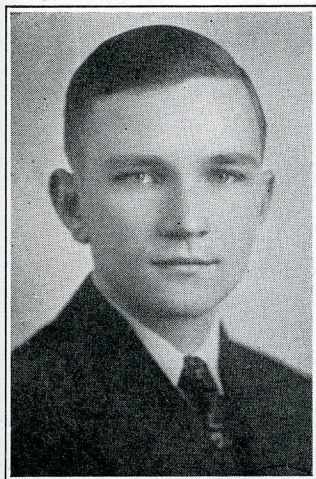
1. Carl Lundquist, Sioux Falls, "Democracy versus Fascism."
1. C. J. Humphrey, Baylor, "The Future of Democracy in Central Europe."
3. Jack Hays, Tulsa, "Democracy versus Nazism."
4. Eugene Worrell, Wake Forest, "The Effect of Hitler on Democracy."
5. Donald Holley, Illinois State Normal University, "Democracy versus Socialism."
6. Newell Birk, Upper Iowa, "Can Preparedness Help Preserve Democracy?"

MEN'S EXTEMPORANEOUS SPEAKING

JUDGES' RANKINGS

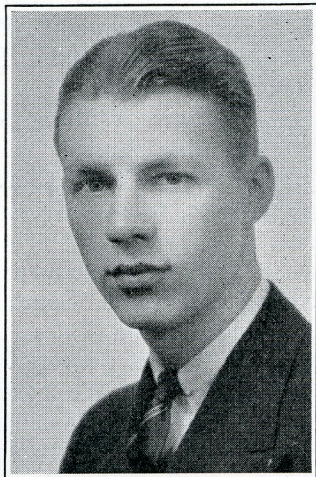
Rank	College	Preliminary	Totals	Semi-Finals	Totals	Finals	Totals
1.	Sioux Falls	1 3 1 2 3 1 1 3 2	17	2 1 3 2 1	26	4 2 4 3 2 2 1	44
1.	Baylor	1 1 1 7 1 2 1 1 1	16	6 1 4 1 5	33	1 1 1 1 1 3 3	44
3.	Tulsa	3 1 3 2 2 4 1 1 4	21	1 4 1 5 1	33	6 4 2 4 3 1 6	59
4.	Wake Forest	2 4 1 3 2 2 1 2 1	18	3 4 5 3 2	35	2 3 5 5 5 4 5	64
5.	Illinois State Normal Univ.	1 1 1 1 3 2 1 1 4	15	7 5 2 4 4	37	5 5 3 2 6 5 2	65
6.	Upper Iowa	1 3 1 5 2 1 2 1	17	1 4 6 1 4	33	3 6 6 6 4 6 4	68
7.	Alva	4 2 2 1 1 2 4 2 1	19	2 5 6 1 5	38		
7.	Gustavus Adolphus	3 2 7 3 2 1 1 3 3	25	2 3 2 3 3	38		
9.	Redlands	6 1 3 1 1 3 1 1 1	18	6 4 5 4 2	39		
9.	Wheaton	1 1 4 2 6 2 2 1 2	21	6 3 2 5 2	39		
11.	Heidelberg	1 1 4 2 2 6 4 4 2	26	1 1 1 6 6	41		
12.	Hardin-Simmons	1 1 1 7 6 1 1 2 6	26	5 3 4 5 1	44		
12.	Idaho	2 2 8 2 2 1 5 2 2	26	3 2 3 6 4	44		
14.	Maryville	3 6 1 1 3 3 3 4 5	29	6 2 3 2 3	45		
15.	Ottawa	5 2 1 2 5 3 2 2 1	23	5 7 1 3 7	46		
16.	San Marcos	3 3 3 3 1 5 2 6 1	27	3 2 4 6 6	48		
17.	St. Thomas	3 3 4 1 1 5 4 3 3	27	5 5 6 2 6	51		
18.	Central, Missouri	1 1 1 5 2 4 2 3 7	26	4 5 7 7 5	54		
19.	St. Olaf	3 4 6 3 2 5 3 1 2	29	7 6 5 4 3	54		
19.	Linfield	5 2 3 1 1 5 4 5 3	29	4 7 7 7 7	61		
21.	Augustana, South Dakota	1 1 2 2 7 6 5 1 5	30				
21.	Drake	2 3 3 4 4 4 6 1 3	30				
23.	Dakota Wesleyan	2 4 2 3 2 4 5 2 7	31				
23.	Washburn	7 4 7 3 1 2 3 2 2	31				
23.	Hastings	2 7 2 2 4 1 4 5 4	31				
26.	Oklahoma Baptist	4 1 5 4 3 3 6 4 2	32				
26.	Pacific	5 7 5 1 1 2 6 4 1	32				
26.	McKendree	6 6 5 2 5 5 1 1 1	32				
26.	DeKalb	1 5 4 5 4 4 2 3 4	32				
26.	Franklin	2 3 6 1 5 4 4 6 1	32				
26.	Pittsburg	5 3 6 2 5 3 2 1 5	32				
32.	Nebraska Wesleyan	3 3 3 2 4 3 3 7 5	33				
32.	Macalester	4 4 7 1 1 1 3 7 5	33				
32.	Oklahoma A. & M.	3 7 6 4 2 3 1 3 4	33				
35.	Jamestown	4 5 1 7 3 4 3 2 5	34				
35.	Augustana, Illinois	4 5 1 1 5 6 4 1 7	34				
37.	Simpson	2 2 2 5 8 8 2 5 2	36				
37.	Park	2 2 3 7 6 1 3 6 6	36				
37.	Edmond	2 2 1 5 4 7 5 3 7	36				
37.	Huron	5 7 2 4 2 1 6 4 5	36				
37.	Western Union	5 2 6 7 1 1 7 3 4	36				
42.	Presbyterian	4 5 5 6 6 1 5 3 2	37				
42.	Central, Iowa	6 2 4 7 3 5 6 3 1	37				
42.	South Dakota State	6 4 3 4 3 5 6 4 2	37				
45.	Southwestern	7 6 3 4 7 3 2 3 3	38				
46.	Eureka	3 4 2 4 6 1 5 7 7	39				
46.	Hays	7 5 4 5 1 3 4 7 3	39				
48.	Battle Creek	7 6 4 7 5 2 3 4 2	40				
49.	Hope	5 6 5 4 4 2 7 5 3	41				
49.	Concordia	3 3 5 7 4 5 6 5 3	41				
51.	Ouachita	1 6 6 5 6 4 6 4 4	42				

Rank	College	Preliminary	Totals
51.	Ozarks	4 5 6 3 3 5 2 6 8	42
53.	Illinois Wesleyan	4 5 4 7 6 7 4 4 3	44
53.	Dubuque	5 5 2 6 5 6 7 2 6	44
53.	Colby	4 6 3 6 7 7 3 2 6	44
53.	Missouri Valley	6 8 4 5 3 3 3 8 4	44
53.	Madison	8 7 2 3 3 7 5 6 3	44
58.	Aberdeen	5 5 2 4 5 4 7 8 5	45
59.	Doane	2 3 7 4 7 4 7 7 6	47
59.	Michigan State	5 2 2 8 8 6 5 6 5	47
61.	Kent	4 3 5 6 8 6 5 6 4	47
62.	Bethany	8 4 7 5 7 7 3 4 3	48
63.	Greeley State	7 7 7 3 4 6 2 7 6	49
64.	Centre	4 3 8 5 6 6 6 7 5	50
64.	Southwest Louisiana	6 4 6 6 7 4 6 5 6	50
64.	Hamline	7 4 7 3 4 7 7 5 6	50
66.	Rollins	6 5 5 8 7 6 2 5 7	51
68.	North Carolina State	6 6 5 6 2 6 8 7 7	53
68.	North Central	8 7 6 3 5 2 8 8 6	53
70.	William Jewell	7 5 4 4 7 5 8 6 8	54
70.	Akron	7 8 8 6 6 6 4 4 5	54
70.	Yankton	8 7 7 6 4 7 5 6 4	54
73.	Kearney	6 6 6 6 7 8 4 6 7	56
73.	Puget Sound	8 6 7 7 5 8 5 6 4	56
75.	Pennsylvania	8 8 8 6 3 7 6 5 6	57
76.	Bowling Green	7 6 5 6 6 7 7 7 7	58
77.	Montana State	7 7 8 5 7 5 7 5 8	59
78.	Western State	5 7 7 8 8 8 7 5 6	61
79.	Colorado State	6 8 6 8 6 7 8 8 8	65
80.	Kalamazoo	2 8 5 5 4 3	
81.	Millsaps	3 4 4	
82.	East Texas	6 8 8	



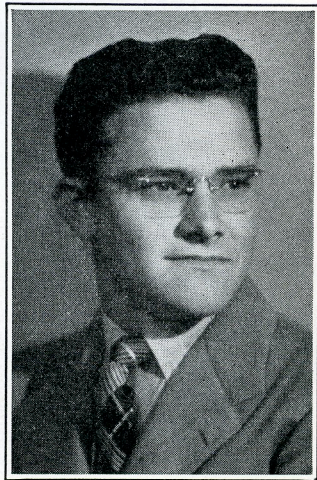
JACK HAYS
Third in Extempore
University of Tulsa,
Oklahoma Beta

Senior. Expects to study law. Won fifth in extempore at Houston in 1936. Placed first in the Savage extempore contest at Oklahoma Theta and second in the contest at Oklahoma Zeta. Four years debate experience.



CARL LUNDQUIST
Tied for first in Extempore
Sioux Falls College,
South Dakota Epsilon

Junior. In 1935 he was a member of the high school team which won the national debate tournament. He also spoke in the national extempore contest against C. J. Humphrey, of Baylor, who tied with him for first at Topeka. He won the South Dakota state extempore contest. With Charles Dougherty he also won a superior rating in debate.



C. J. HUMPHREY
Tied for first in Extempore
Speaking
Baylor University, Texas Iota

Twenty year old junior who plans to study law. He was national high school champion three years ago. He has won first in seven debate tournaments and firsts in several extemporaneous speaking, oratory, after dinner speaking, and poetry reading contests.

Women's Extemporaneous Speaking



ROUND ONE

The numbers indicate the order in which the contestants placed, not that in which they spoke.

Group A. 1, Dorothy Banks, Dubuque; 2, Wanda Jones, Park; 3, Jeanne Seguin, Sioux Falls; 4, Alma Nyland, Hope; 5, Lois Miner, Kent; 6, Lois Hurt, Eureka.

Group B. 1, Constance Burkhard, William Jewell; 2, Penn Lyle Compre, Ouachita; 3, Maxine Ann Smith, Oklahoma A. & M.; 4, Maryan Askley, Michigan State; 5, Ruth Clara Hoffman, Illinois State Normal University (tie); 5, Lucille Gross, Aberdeen (tie); 7, Blanche English, Ottawa.

Group C. 1, Betty Jane Warren, Washburn; 2, Delle McKenzie, Wheaton; 3, Clara Chilson, Augustana, South Dakota; 4, Norma Barks, Cape Girardeau; 5, Lida Hausam, Tulsa (tie); 5, Helen Rader, Ozarks (tie); 7, Pearl McLean, Detroit University.

Group D. 1, Betty Walker, Nebraska Wesleyan; 2, Barbara White, Redlands; 3, Synia Wynne, Oklahoma Women's College; 4, Sylvia Strum, Augustana, Illinois; 5, Mary Ellen Brownlee, Southwestern; 6, Caroline Brown, Battle Creek; 7, Evelyn Larson, Madison.

Group E. 1, Louise Proffitt, Maryville, Tennessee (tie); 1, Doris Hancock, Pacific (tie); 3, Bruce Johnston, Ada; 4, Katherine McConnon, Puget Sound; 5, Barbara Lee Dirkey, Macalester; 6, Marge Rowe, DeKalb.

Group F. 1, Jeanette Frasier, Hastings; 2, Janet Brown, Franklin; 3, Fern Reed, Edmond; 4, Frances Graber, Pittsburg Teachers; 5, Frances McDaniels, East Texas Teachers; 6, Mardella Dahl, St. Olaf; 7, Eleanor McGowan, Colorado State.

Group G. 1, Elizabeth Moore, Mary Hardin-Baylor; 2, Margaret Plowman, Gustavus Adolphus; 3, Barbara Lacquement, Bethany; 4, Ada Jane Ludden, Kearney; 5, Phyllis Hein, South Dakota Wesleyan; 6, Edith Enbom, Western State; 7, Naomi Achterman, Central, Iowa.

Group H. 1, Pauline Shepard, Simpson; 2, Mary Helen Neelley, Baylor; 3, Martha Ward, Heidelberg; 4, Barbara Hall, Hamline; 5, Marjory Chindahl, Rollins; 6, Elaine Nelson, Yankton; 7, Amy Hildebrand, Hays.

Group I. 1, Maida Rettberg, Illinois Wesleyan; 2, Mary Helen



DORIS HANCOCK
Second in Extempore
College of the Pacific,
California Delta

Junior, Speech major. Plans to teach speech. Miss Hancock is no amateur. Competed in the national high school tournament and in the national junior college tournament, where she was on the winning debate team. She has won numerous other honors in debate and extemporaneous speaking, including second in the Linfield tournament and first in the Far West.



BETTY WALKER
Semi-finalist in extempore
Wesleyan, Nebraska Alpha

She enjoyed the hustle of the convention. When she wasn't competing, she copied records and helped the committees running the contests.

Parker, Louisiana; 3, Hatty Mittendorf, San Marcos; 4, Beatrice Offineer, Akron; 5, Velma Ebinger, Western Union; 6, Dorothy Holm, Concordia; 7, Margaret Mensch, South Dakota State.

ROUND TWO

Group A. 1, Jeanette Frasier, Hastings; 2, Margaret Plowman, Gustavus Adolphus; 3, Amy Hildebrand, Hays; 4, Velma Ebinger, Western Union; 5, Bruce Johnston, Ada; 6, Evelyn Larson, Madison Teachers.

Group B. 1, Fern Reed, Edmond; 2, Barbara Hall, Hamline; 3, Mary Helen Parker, Louisiana; 4, Louise Proffitt, Maryville, Tennessee; 5, Lois Hurt, Eureka; 6, Pen Lile Compre, Ouachita; 7, Ada Jane Ludden, Kearney.

Group C. 1, Martha Ward, Heidelberg; 2, Phyllis Hein, South Dakota Wesleyan; 3, Dorothy Holm, Concordia; 4, Ruth Hoffman, Illinois State Normal University; 5, Dorothy Banks, Dubuque; 6, Helen Rader, Ozarks; 7, Frances McDaniels, East Texas Teachers.

Group D. 1, Elaine Nelson, Yankton; 2, Elizabeth Moore, Mary Hardin-Baylor (tie); 2, Delle McKenzie, Wheaton (tie); 4, Barbara White, Redlands; 5, Beatrice Offineer, Akron; 6, Alma Nyland, Hope; 7, Blanche English, Ottawa.

Group E. 1, Doris Hancock, Pacific; 2, Sylvia Strum, Augustana, Illinois; 3, Mary Helen Neelley, Baylor; 4, Betty Jane Warren, Washburn; 5, Marian Ashley, Michigan State; 6, Margaret Mensch, South Dakota State; 7, Wanda Jones, Park.

Group F. 1, Constance Burkhard, William Jewell; 2, Hatty Mittendorf, San Marcos; 3, Marge Rowe, DeKalb; 4, Lois Miner, Kent; 5, Mary Ellen Brownlee, Southwestern; 6, Pearl McLean, Detroit University; 7, Eleanor McGowan, Colorado State.

Group G. 1, Janet Brown, Franklin; 2, Maxine A. Smith, Oklahoma A. & M.; 3, Jeanne Seguin, Sioux Falls; 4, Caroline Brown, Battle Creek; 5, Katherine McConnon, Puget Sound; 6, Norma Barks, Cape Girardeau; 7, Edith Enbom, Western State.

Group H. 1, Lyda Hausman, Tulsa; 2, Barbara L. Dickey, Macalester; 3, Betty Walker, Nebraska Wesleyan; 4, Frances Graber, Pittsburgh; 5, Lucille Gross, Aberdeen; 6, Marjory Chindahl, Rollins; 7, Naomi Achlerman, Central, Iowa.

Group I. 1, Caroline Chilson, Augustana, South Dakota; 2, Maida Rettberg, Illinois Wesleyan; 3, Mardella Dahl, St. Olaf (tie); 3, Synia Wynne, Oklahoma Women's College (tie); 4, Barbara Lacquement, Bethany; 5, Pauline Shepard, Simpson.

ROUND THREE

Group A. 1, Fern Reed, Edmond; 2, Elizabeth Moore, Mary Hardin-Baylor; 3, Jeanette Frasier, Hastings; 4, Betty Jane Warren, Washburn; 5, Ruth Hoffman, Illinois State Normal University; 6, Caroline Brown, Battle Creek.

Group B. 1, Mary Ellen Brownlee, Southwestern; 2, Mary Helen Neelley, Baylor; 3, Delle McKenzie, Wheaton; 4, Phyllis Hein, South Dakota Wesleyan; 5, Barbara Lee Dirkey, Macalester; 6, Pen Lile Compre, Ouachita.

Group C. 1, Hattie Mittendorf, San Marcos; 2, Mardella Dahl, St. Olaf; 3, Sylvia Strum, Augustana, Illinois; 4, Catherine McConnon, Puget Sound; 5, Elaine Nelson, Yankton; 6, Helen Rader, Ozarks (tie); 6, Ada Jane Ludden, Kearney (tie).

Group D. 1, Margaret Plowman, Gustavus Adolphus; 2, Jeanne Seguin, Sioux Falls; 3, Margaret Mensch, South Dakota State; 4, Marge Rowe, DeKalb; 5, Barbara White, Redlands; 6, Martha Ward, Heidelberg; 7, Frances Graber, Pittsburg.

Group E. 1, Doris Hancock, College of Pacific; 2, Barbara Lacquement, Bethany; 3, Beatrice Offineer, Akron; 4, Janet Brown, Franklin; 5, Barbara Hall, Hamline; 6, Lois Miner, Kent; 7, Lucille Gross, Aberdeen.

Group F. 1, Dorothy Holm, Concordia (tie); 1, Wanda Jones, Park (tie); 3, Maxine A. Smith, Oklahoma A. & M.; 4, Clara Chilson, Augustana, South Dakota; 5, Amy Hildebrand, Hays; 6, Naomi Achterman, Central, Iowa; 7, Eleanor McGowan, Colorado State.

Group G. 1, Constance Burkhardt, William Jewell; 2, Mary Helen Parker, Louisiana; 3, Pauline Shepard, Simpson; 4, Alma Nyland, Hope; 5, Lyda Hausam, Tulsa; 6, Edith Enbom, Western State; 7, Evelyn Larson, Madison.

Group H. Synia Wynne, Oklahoma Women's College; 2, Lucille Proffitt, Maryville, Tennessee; 3, Maryan Ashley, Michigan State; 4, Norma Barks, Cape Girardeau; 5, Marjory Chindahl, Rollins; 6, Velma Ebinger, Western Union; 7, Dorothy Banks, Dubuque.

Group I. 1, Pearl McLean, Detroit; 2, Betty Walker, Nebraska Wesleyan; 3, Maida Rettberg, Illinois Wesleyan; 4, Lois Hart, Eureka; 5, Bruce Johnston, Ada; 6, Frances McDaniels, East Texas Teachers; 7, Blanche English, Ottawa.

SEMI-FINALS

Group A. 1, Constance Burkhardt, William Jewell; 2, Mary Helen Parker, Louisiana; 3, Maida Rettburg, Illinois Wesleyan; 4, Mardella Dahl, St. Olaf; 5, Hattie Mittendorf, San Marcos; 6, Synia Wynne, Oklahoma Women's College.

Group B. 1, Jeanette Frasier, Hastings; 2, Delle Mackenzie, Wheaton; 3, Mary Helen Neelley, Baylor; 4, Margaret Plowman, Gustavus Adolphus; 5, Louise Proffitt, Maryville; 6, Betty Jane Warren, Washburn; 7, Fern Reed, Edmond.

Group C. 1, Clara Chilson, Augustana, South Dakota; 2, Elizabeth Moore, Mary Hardin-Baylor; 3, Doris Hancock, Pacific; 4, Jeanne Seguin, Sioux Falls; 5, Janet Brown, Franklin; 6, Betty Walker, Nebraska Wesleyan.

FINALS

1. Constance Burkhardt, William Jewell, "What Constitutes Success for the Career Woman."
2. Doris Hancock, College of the Pacific, "Women in Medicine."
3. Elizabeth Moore, Mary Hardin-Baylor, "Education for a Twentieth Century Career."
4. Jeanette Frasier, Hastings, "Marriage vs. Career."
5. Maida Rettberg, Illinois Wesleyan, "What Handicaps Does the Career Woman Face?"
6. Clara Chilson, Augustana, South Dakota, "The Effects of Careers for Women on the Next Generation."
7. Delle Mackenzie, Wheaton, "Women and Their Husbands' Careers."

WOMEN'S EXTEMPORANEOUS SPEAKING

JUDGES' RANKINGS

Rank	College	Preliminary	Totals	Semi-Finals	Totals	Finals	Totals
1.	William Jewell	1 1 3 3 1 1 1 1 1	13	3 2 4 5 1	28	1 2 1 1 2 3 3	41
2.	Pacific	1 1 5 1 4 2 2 1 2	19	1 2 4 4 4	34	6 1 3 3 1 1 3	52
3.	Mary Hardin-Baylor	1 3 1 3 1 3 5 1 2	20	2 3 5 1 2	33	4 5 2 4 6 4 2	60
3.	Hastings	1 2 1 1 1 3 2 2 6	19	2 3 1 1 4	30	2 4 5 7 2 5 5	60
5.	Augustana, South Dakota	3 1 3 3 1 2 2 6 4	25	4 1 1 3 1	35	5 3 7 1 4 6 7	68
5.	Illinois Wesleyan	2 1 1 4 3 1 3 2 4	21	2 6 1 1 6	37	3 6 4 5 5 2 6	68
7.	Wheaton	1 3 2 1 2 4 1 4 3	21	6 1 2 5 2	37	7 7 6 6 7 7 4	81
8.	Gustavus Adolphus	2 1 3 3 2 1 1 5 1	19	1 4 5 3 6	38		
9.	Louisiana	1 2 3 4 3 4 2 2 3	24	1 5 3 3 3	39		
10.	San Marcos	3 5 2 1 3 2 2 1 1	20	5 1 6 6 2	40		
11.	Franklin	2 1 4 1 1 2 4 3 4	22	5 4 3 5 3	42		
12.	Baylor	1 6 1 2 7 1 2 1 4	25	3 5 3 2 5	43		
13.	Sioux Falls	4 4 1 6 3 1 3 1 3	26	3 6 2 2 5	44		
14.	St. Olaf	6 5 2 2 2 5 1 2 2	27	6 4 2 2 4	45		
14.	Oklahoma Women's College	2 4 3 1 4 4 1 3 2	24	4 3 5 4 5	45		
16.	Maryville	2 2 3 3 6 3 2 4 1	26	7 2 4 4 3	46		
17.	Nebraska Wesleyan	1 2 1 7 2 1 2 4 1	21	6 5 6 6 6	50		
18.	Washburn	2 2 1 4 1 5 3 6 3	27	5 6 6 6 1	51		
19.	Edmond	5 3 5 1 1 1 1 4 1	22	4 7 7 7 7	54		

Rank	College	Preliminary	Totals
20.	Hamline	2 5 5 2 2 2 1 5 5	29
20.	Oklahoma A. & M.	6 2 2 4 2 4 5 1 3	29
20.	Augustana, Illinois	3 3 5 3 2 3 3 3 4	29
20.	Bethany	4 2 2 5 5 3 5 2 1	29
24.	Redlands	4 1 2 5 5 2 2 7 4	32
24.	Heidelberg	3 3 4 2 3 2 7 3 5	32
26.	Park	2 1 4 7 6 7 3 2 1	33
26.	Dakota Wesleyan	5 5 4 1 1 5 4 3 5	33
28.	Simpson	4 1 2 6 6 6 3 4 2	34
28.	Concordia	5 7 5 5 5 1 1 3 2	34
28.	Michigan State	4 3 6 6 3 4 4 1 3	34
31.	Ada	3 4 2 4 4 5 5 3 5	35
31.	Macalester	6 6 1 2 3 3 6 6 2	35
33.	Tulsa	6 4 6 1 1 2 4 7 5	36
33.	Akron	6 3 4 4 4 5 3 4 3	36
33.	DeKalb	4 5 6 2 2 4 4 2 7	36
36.	Cape Girardeau	4 5 5 2 6 6 3 2 4	37
36.	Southwestern	5 7 4 6 4 5 3 2 1	37
36.	Yankton	5 4 7 2 3 1 5 5 5	37
39.	Illinois State Normal Univ.	5 6 4 3 2 6 6 3 4	39
40.	Detroit	7 6 7 4 6 6 1 1 2	40
41.	Dubuque	1 3 2 6 6 3 6 7 7	41
41.	Hays	7 7 3 5 3 2 4 4 6	41
41.	Hope	3 2 5 6 6 7 4 3 5	41
41.	Ouachita	2 4 1 5 7 6 5 5 6	41
41.	Puget Sound	5 3 4 5 5 3 6 7 3	41
45.	Battle Creek	6 5 6 3 4 5 4 5 5	43
46.	Eureka	6 5 6 6 4 5 4 6 3	45
46.	Pittsburg	4 6 3 3 6 5 6 6 6	45
46.	South Dakota State	7 4 7 5 5 6 5 4 2	45
46.	Rollins	6 2 6 5 5 6 5 5 5	45
50.	Kent	5 6 3 5 5 3 6 6 7	46
50.	Western Union	4 6 6 2 5 4 7 6 6	46
52.	Kearney	3 4 5 7 5 7 4 6 7	48
52.	Ozarks	5 7 4 7 4 4 7 4 6	48
54.	Aberdeen	3 5 7 6 4 4 7 7 6	49
54.	East Texas Teachers	3 4 6 4 7 7 6 5 7	49
56.	Central, Iowa	7 7 7 4 7 7 7 5 5	56
57.	Madison	7 6 7 6 6 6 6 6 7	57
57.	Western State	6 6 6 7 7 7 7 5 6	57
59.	Ottawa	7 7 5 7 7 6 7 7 6	59
60.	Colorado State	7 7 7 7 7 7 6 7 7	62

THE FORENSIC OF OIL MAN FINANCES FORENSIC

LYNNE ANDERSON

Because he believes debating has more educational value than any other branch of college work, L. L. Coryell, Sr., millionaire Lincoln, Nebraska, oil dealer, has sponsored the forensic representatives of Nebraska Wesleyan on 8,000 miles of travel this year.



L. L. CORYELL, SR.

"Debating helped me more than anything else in college," says Mr. Coryell. "My personal experience has shown me that life is one continuous argument, whether it is child, business, employer, or employee; hence the power of debate is valuable because it means the ability to convince those with whom you come in contact."

L. L. Coryell & Son have adopted the Nebraska Alpha chapter. The oil men want to see the students get forensic experience. In January they sponsored a trip through Missouri, Illinois, and Iowa, where the Nebraskans met Mis-

souri Delta and Gamma at William Jewell and Central; Illinois Eta at Normal University; and Iowa Zeta and Epsilon at Parsons and Simpson. Coach C. Horton Talley, now at Texas State Women's College at Denton, accompanied debaters June Stallboris, Lynne Anderson, James Bliss, and Melvin Bowman.

Other tournament trips taken by Nebraska Alpha under Coryell sponsorship included those to the Red River Valley Tournament at Moorhead, Minnesota; Northwestern Tournament at St. Paul; Nebraska Intercollegiate at Kearney; the Pi Kappa Delta national at Topeka; and the Old Line Interstate Oratorical at Chicago. Coryell



L. L. CORYELL, JR.

and Son furnished all transportation expenses on the Pierce-Arrow in which the forensic squad travels.

At Topeka Nuetzman tied for first in oratory. Both the men's and women's debate teams won excellent ratings. Betty Walker got to the semi-finals in extemporaneous speaking. Nuetzman went on to Chicago to make history by winning the Old Line interstate oratorical.

Mr. Coryell started business with a capital of \$100 borrowed money. Today he heads a business which covers thirty per cent of the United States. It is entirely family owned, has no indebtedness, has no preferred stock, and Mr. Coryell, Sr., the founder, is still its president. He is also a member of the board of trustees of Nebraska Wesleyan.

At the Moorhead tournament the squad began to pay dividends on the investment. Melvin Bowman won first in extemporaneous speaking. At the state meet in Kearney, Delmar Nuetzman won first in the Old Line oratorical contest with the unanimous decision of the five judges. The rest of the squad assembled four second places and two thirds in oratory, debate, and extemporaneous speaking.

American Business, February, 1938, contained an article on his company. It described it as owning nearly five hundred stations throughout the Midwest and as being especially successful.

In reviewing his career Mr. Coryell says that his training in debate has been especially valuable in his business contacts. He must be a master of the art of persuasion, beautiful and just.

NEBRASKA WESLEYAN WINS THE INTERSTATE AGAIN

Nebraska Alpha, perennial winner of the Old Line Interstate Oratorical contest, won first again this year. Delmar Nuetzman, who won first in the national Pi Kappa Delta contest at Topeka, repeated at Evanston. He is the first orator to win first in both contests. John Roberts, Carleton College, Minnesota; and Alfred Brown, Lake Forest, Illinois, were second and third.

Two Pi Kappa Delta girls who had won honors at Topeka won first and second in the women's contest. Maida Rettberg, Illinois Wesleyan, was first; and Norma Cope, Hastings, second. Elizabeth S. Loeks of Calvin College, Michigan, won third.

EDITOR'S PERSONAL PAGE

Where inconsistencies cease from troubling and logic is at rest

The flowering moments of the mind drop half their petals in our speech.—*Oliver Wendell Holmes.*

Under the direction of Janet Brown and Billie Green, student members of the national council, the amateur hour, was a *colorful* event.

Language is the armory of the human mind, and at once contains the trophies of its past, and the weapons of its future conquests.—*Coleridge.*

“A controversy is normally an exploitation of a set of misunderstandings for warlike purposes.” Quoted by Stuart Chase in *The Tyranny of Words.*

It was a braw dance the Washburn people gave us Wednesday night. I wish I could remember the name of that little brunet that chewed gum with a southern accent. In one trip—this word is used advisedly—around the hall that 208 debating sylph completely ruined my ten cent shine. *C'est la guerre.*

Many of the delegates at the convention were disappointed in not seeing the Jayhawk, the state bird of Kansas. This bird is both shy and rare. Only those who got up early in the morning and went out to the lodge pole pine grove in the high hills just back of Topeka were able to see it. There was a small flock around the Potawatami Indian camp there. The birds always follow the Potawatami Indians because they are in the habit of roosting on the tepee poles to take advantage of the warmth rising from the fires within. Those who got out to the camp early could see the Jayhawks on the tepee poles just as day broke. They left immediately in search of food for their young. There is a haunting plaintiveness in their mating call. They rise in a steep spiral, their song rising with their flight until it breaks in a melancholy half note that lingers in the memory long after the bird's brilliant plumage is lost in the azure depths. Sunflower seed is the natural food of the Jayhawk. As cultivation has destroyed the original wild sunflowers of the state, the birds have to fly great distances in search of food. Unless something is done to save the rapidly disappearing sunflower, this noble bird will soon become extinct.