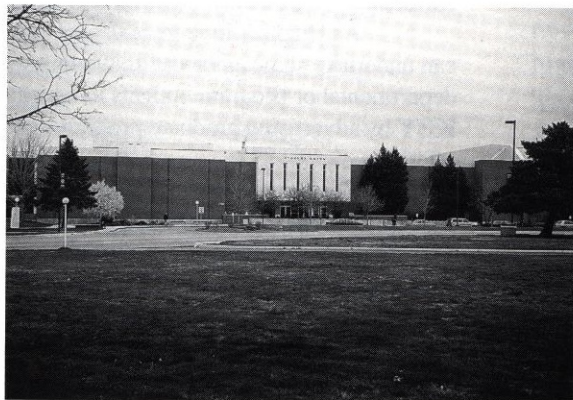


THE KEY

A Monthly Publication of Pi Kappa Delta National Honorary Fraternity
Volume 1, Number 8-9 **May-June, 1998**



PREVIEW OF COMING ATTRACTIONS: BOISE STATE UNIVERSITY IN 2001

Upper Left: View of Boise, Idaho from the airport; Lower Left: Boise Student Union -
Tournament Headquarters; Right: Vending Machine fries in 45 seconds (really)!

The KEY, Vol 1, No 8-9, May/June 1998

The KEY is a monthly publication [except July and August] of Pi Kappa Delta, 125 Watson Street, P.O. Box 38, Ripon, WI 54971. Pending Periodical Postage Paid at Ripon WI 54971.

Be sure to notify us at once of any change in your address. Please include your old mailing label and your new address. **POSTMASTER:** Please address changes to PKD, 125 Watson Street, P.O. Box 38, Ripon, WI 54971. Telephone: 920-748-7533 FAX: 920-748-9478

Non-member annual subscription fee is \$50.00. Chapters receive subscription for members as part of annual chapter fee. \$20 of every \$50 annual fee is for subscription to **THE KEY**.

Information for inclusion in **THE KEY** should be sent to: Robert Littlefield, Box 5075, Fargo, ND 58105, or emailed to: rlittlef@badlands.nodak.edu by the 15th of the month prior to requested date of publication (Oct 15 for Dec 1; March 15 for May 1; etc).

Your National Council

OFFICERS

JOEL HEFLING, President
(605) 688-4390 FAX: (605) 688-6551
heflingj@ur.sdstate.edu

SCOTT JENSEN, President Elect/Tournament Dir.
(314) 968-7439 FAX: (314) 968-7403
jensensc@websteruniv.edu

BILL HILL, Immediate Past President/Awards
(704) 547-4217 FAX: (704) 510-6900
bjhill@email.uncc.edu

ROBERT LITTLEFIELD, Secretary-Treasurer
(701) 231-7783 FAX: (701) 231-7784
rlittlef@badlands.nodak.edu

MICHAEL BARTANEN, Editor of *The Forensic*
(253) 535-7764 FAX: (253) 536-5063
BARTANMD@PLU.EDU

R. DAVID RAY, Historian
(870) 460-1078 FAX: (870) 460-1961
RAY@UAMONT.EDU

COUNCIL MEMBERS:

BOB DERRYBERRY (417-326-1697)
FAX: (417) 326-1658
bderrybe@sbuniv.edu

GLENDA TREADAWAY (704) 262-2222
FAX: (704) 262-2543
treadwaygj@appstate.edu

SUSAN MILLSAP (614) 823-1753
FAX: (614) 823-3367
smillsap@otterbein.edu

TAMMY FRISBY (218) 299-5638
FAX: (218) 299-4256
tmfrisby@gloria.cord.edu

TERRY HINNENKAMP (701) 235-9657
FAX: (701) 231-7784
thinnek@plains.nodak.edu



Flag Day

THE KEY forced to go bi-monthly due to absence of advertising support!

While attempting to improve communication between the National Council and the Local Chapters, the financial stability of **The KEY** has been compromised by the lack of sponsors from within and outside of Pi Kappa Delta. In order to complete the current year, a bi-monthly format will be followed.

As chapters look to next year, perhaps they can undertake some advanced budgeting within departmental or program budgets to help support **The KEY** by advertising graduate programs or other offerings.

The Council will accept advertising from any vendor, with the priority as follows:

- 1) Institutions with graduate programs;
- 2) Scholarly conferences;
- 3) Textbook/publishing houses; and
- 4) Other organizations, businesses, and/or groups with a focus on forensic education.

Advertising should be camera-ready. However, PKD can typeset the ad for a minimal cost. Photographs, logos, and designs may be used in the ads.

Materials for inclusion must be received by the 15th of the month prior to the month of publication (Example: October 15 for December 1 distribution). Sponsors interested in securing advertising space should contact Robert Littlefield, Box 5075, Fargo, ND 58105 to obtain a ratecard and a space reservation/insertion form.

THE KEY

A Monthly Publication of Pi Kappa Delta National Honorary Fraternity

Volume 1, Number 8-9

May-June, 1998

NCA PROGRAMS ANNOUNCED

by **Bill Hill, Immediate Past President**

Pi Kappa Delta will sponsor eight panels at the 1998 NCA convention in New York. Pi Kappa Delta has long sought to promote significant scholarly activity within the forensic community. The panels assembled for the 1998 convention focus on a diverse range of timely and important issues, and they should certainly be of interest to all forensic educators.

1998 NCA Panels Sponsored by PKD

- ◆ "Forensics as a Cult: Lessons to be Learned"
- ◆ "The Forensic Community: Assessing our Past, Envisioning Our Future"
- ◆ "Issues of Age in Academia: New Visions"
- ◆ "Lessons Learned, New Visions: The Forensics Program as a Communication Laboratory"
- ◆ "The Primacy of the Text: Reality or Illusion?"
- ◆ "Parliamentary Debate Has Impacts? An Examination of Lessons Learned by Teachers and Coaches"
- ◆ "The Dawning of a New Century: Trends in Ballot Writing Across the Forensic Spectrum"
- ◆ "Forensics: The Hyper-Hybrid Course--Lessons Learned from Participation, Visions for the Future"

Please support your colleagues, forensics, and PKD by attending as many of the panels as possible. The dates and times of the panels, as well as the PKD business meetings will be listed in the NCA convention program.

PROPOSED CONSTITUTIONAL AMENDMENT

by **Glenda Treadaway, Council Member**

The Ad Hoc National Tournament Evaluation Committee recommends the following amendment.

Amend Article III, Section 363.4 which currently reads as follows:

"Committee on Convention Tournaments: The chairman, with the approval of the National President, shall appoint such additional members of the committee as are necessary to handle the tournaments of the National Convention. This committee shall have complete charge of all matters pertaining to the National Convention forensic events, subject to general supervision of the National Council.

Changes are noted by italics:

"Committee on Convention Tournaments: The *national tournament director*, with the approval of the National President, shall appoint such additional members of the committee as are necessary to handle the tournaments of the National Convention. This committee shall *follow the bylaws of Pi Kappa Delta concerning tournament procedures.*"

MUSINGS from Joel . . .

By Joel Hefling, President

As children, many of us were admonished by parents or grandparents, especially at family gatherings, to "clean up your plate." Frequently the rule was that one could not leave the table until the plate was empty. "Waste not, want not" and "Remember the starving children in (insert the name of the appropriate country)" were the usual conclusions. We were encouraged to eat everything on the plate, no matter how miserable we might become in the process.

In the late 1990s, we still talk about how much is on our plate, although currently the "plate" is filled with much different items. Chapter sponsors and coaches have a seemingly endless list of tasks to accomplish, from teaching to coaching to coordinating and supervising chapter activities and events. Then we add serving on departmental or campus committees and working on other reforms of professional development. At some point we add family activities and involvement in community organizations, and somewhere along the way we may be encouraged to add personal growth activities.

For students, the scenario may not be much better. Begin with a full complement of classes and the attendant homework, then add the related events that are intended to supplement the course work. Now add involvement in Pi Kappa Delta, along with a variety of other activities which are designed to develop the whole person. Work at one or more jobs has to be included as an important ingredient, along with the requisite social life. Along the way, one is almost obligated to include family activities.

At some point, we discover that our "cup runneth over," the overly full plate is getting really messy and hard to manage, and some of those items are less nourishing or satisfying than we had anticipated. When someone approaches us with just one more little project, we're ready to throw up our hands, along with the plate and everything on it! The solution to this trying situation, we are told, is to clean up the plate, get rid of some of those obligations and commitments. That way, we'll have more time/space/energy, whatever it is we're lacking on that overflowing plate.

We now know, that according to recent research, the "clean plate" philosophy can lead to a variety of problems. Overeating as a method of cleaning up the plate has caused numerous physical and psychological health problems for many people. Some of the implications associated with cleaning up our plate today may be nearly as harmful as they were for a previous generation. Trying to get rid of what is on the plate just for the sake of getting rid of it probably is not a sound approach to good health. Careful management and long range planning will help, along with a commitment to the use of a polite but firm refusal to offers of "just one more," no matter how good it may look.

The end of the semester approaches. Tests must be written, term projects are due, a new movie just opened, housing and financial aid applications are due, the entertainment committee needs just one more member, the PKD banquet needs to be planned, the work schedule just changed again, the family wants you to come for dinner on Sunday. The plate is getting really full again! Yes, absolutely, no, yes, thanks but no, yes of course, adjust again, yes! Thanks for being part of this great organization!

NEW MEMBERS WELCOMED IN PKD

Boise State University

62356 Sandy Skinner
 62357 Autumn Haynes
 62365 Marla Archibald
 62366 Kelly Bear
 62367 Brooke Baldwin
 62368 Susan Bordwell
 62369 A. Nicole Huckstep
 62370 Herby Kojima
 62371 Evyann Neff
 62372 Melinda Schulz
 62373 Jennifer Shearman
 62374 Tobin Steiskal
 62375 Brook Smith
 62376 Rachel Wheatley
 62378 Misti Rutledge

Northeast Louisiana University

62377 Elizabeth M. Ward

Hillsdale College

62379 John Templeton
 62380 Emily M. Crookston
 62381 Melinda M. Wilcox
 62382 Jill Misinec
 62383 Eric S. Shierman
 62384 Sarah M. Parker
 62385 Robert P. Busby
 62386 Abel Winn
 62387 P. Jesse Rine
 62388 Devin C. Foley
 62389 Mary C. Moorman

Cameron University

62390 Melvin W. Smith
 62391 Eric T. Colon
 62392 Jason Wilson
 62393 Elizabeth C. Hayth
 62394 Seanlai Pomales
 62395 Jason D. Van Hoozer
 62396 Chris Wilson

Marietta College

62397 Marisa Relorenzo
 62398 Richard D. Ingraham

Louisiana State University

62358 Jennifer Edwards

University of AR-Monticello

62359 Misty Entrikin
 62360 James Knox, III
 62361 Desha Wood
 62362 Robert Jones, Jr.

62363 Chad McGraff
 62364 Roxane Patterson
 62446 Shannon Fleming
 62447 Jimmy Carter

Black Hills State

62399 Aaron McNulty Dimock
 62400 Ellery Grey
 62401 Carla Blomberg
 62402 Benjamin C. Aaker
 62403 Corey A. Christians
 62404 Mark J. Hines
 62408 Norma T. Walks
 62418 Barbara Russell

Concordia College (MN)

62405 Diane Odash
 62406 Jakob D. Jensen
 62407 Robin Moore
 62409 Ryan Hurley
 62410 Christopher Miller

St. Olaf College (MN)

62411 Arienne Dugas
 62412 Jenny Klein
 62413 Dan Kirkham

Moorhead State University (MN)

62414 Joseph J. Edmister

Gustavus Adolphus (MN)

62415 Bapasha Barua
 62417 Maria Mansmith

University of Mary (ND)

62416 Kandi Stone

Central MO State University

62419 Benjamin Stevens
 62420 Victoria Brockmeier
 62421 Nancy Reimal
 62422 Chad Chitwood
 62423 Kathy Argotsinger
 62424 Cynthia-Louise Miller
 62425 Leslie Hahner
 62426 Chad Saenz

Texas A & M University

62427 Jenine Whitehawk
 62428 Dionicio Charls, III
 62429 Timothy Day
 62430 Sean P. Cooper
 62431 Monica Herrera
 62432 Ruben Barrera

(Continued on page 4)

Holy Names College (CA)

62433 Steve Helliwell
 62434 Carmen Jimenez
 62435 Ann T. Olson
 62436 Robin C. Guzman
 62437 Angelina Sias
 62438 Yvonne M. Goodson
 62439 Ginette Aliotti
 62440 Kyle Schellin
 62441 Deborah Price
 62442 Katherine J. Hill
 62443 Laura A. Vaughn
 62444 Janine Meneses
 62445 Brissa Sotelo

Malone College (OH)

62448 Megan Hutchinson
 62449 Stephanie Hanobik
 62450 Heidi Warren
 62451 Kristin Reeg
 62452 Stephanie Sonnanstine
 62453 Wendy Braun

NW Nazarene College (ID)

62454 Dallas A. McKellips III
 62455 Nicole N. Corbin

East Central University (OK)

62456 Donna Callison
 62457 Jaime Penrod
 62458 Carmen L. Bagwell
 62459 Rebecca Pasey
 62460 Gloria G. McGee
 62461 Mechell C. Harris
 62462 Shawna K. Harrison

Bowling Green St. Univ. (OH)

62463 Emily R. Finch
 62464 Jennifer H. Hayden
 62465 Derrick A. Jones
 62466 Sean P. Tominey
 62467 Scott R. Ireland
 62468 Jessica Kemock
 62469 Kate M. Lair

Southwestern College (KS)

62470 Nadia Vandorn
 62471 Robert Fry

University of SW Louisiana

62472 Erin Delahoussaaye
 62473 Christine Mire
 62474 Mandy Sonniak
 62475 Michael Arton
 62476 Tasha Jolivette
 62477 Kyle Broussard

Hastings College Leads in "Read Across America"

by Sara Wade

Forensic competitors don't often get a chance to read *Dr. Suess*, but March 3rd was "Read Across America Day" in celebration of the author's birthday and the Hastings Chapter of PKD took time out to join in the fun.

The Student Education Association at HC organized an event at the local mall and invited all the school children to participate. The forensic team was there, as well!

"It was great to share some of my favorite stories with the kids," freshman Sarie Fischer said. Fischer brought several of her own books from home to the event.

The members sat in small groups and took turns talking with and reading to the children. Each youngster not only got to read some great stories, they also received a certificate at the end of the night saying they had participated in the program.

"I had some really intelligent conversations with them," sophomore Charles Parrott said, "They really know their stuff!"



Above: Charlie Parrott and Sarie Fischer read *Cloudy with a Chance of Meatballs* to two of the children in attendance. Photo courtesy Doug Binsfeld.

LOWER MISSISSIPPI & MISSOURI BI-PROVINCE TOURNAMENT

IE Sweepstakes

Superior: Southwest Baptist

Excellent: McNeese State University; Central College



Above: Host Robert Markstrom (McNeese), Lower MS Governor Kevin Doss (Lamar U-Orange), and President Elect Scott Jensen (Webster U)

Prose Interp

Superior: Derouen, McNeese; Scheer, Southwest Baptist; Barrera, Texas A&M-Kingsville

Excellent: Myer, Central College; Hefley, Central College; Moten, Prairie View A&M; Wilson, Louisiana Tech; Class, Southwest Baptist

Impromptu

Superior: Houston, Central College; Bailey, Southwest Baptist; Arokoyo, UMSL; Hinkle, Southwest Baptist

Excellent: Vassel, UAR-Monticello; Wright, Umary Hardin-Baylor; K. Wilson, Cameron; Stoecklin, Webster; Scheer, Southwest Baptist; Williams, Southwest Baptist; James, McNeese; Dula, McNeese

Informative

Superior: Debeer, Central College

Excellent: Bailey, Southwest Baptist; Whitehead, Southwest Baptist; Houston, Central College

Persuasive

Superior: Bartle, Southwest Baptist

Excellent: Bailey, Southwest Baptist; Pomales, Cameron

Extemp Speaking

Superior: Dula, McNeese; K. Wilson, Cameron

Excellent: Woods, Southwest Baptist; Mauch, McNeese; Bailey, Southwest Baptist

Programmed Oral Interpretation

Superior: Moore, Southwest Baptist

Excellent: Derouen, McNeese; Myer, Central College; Jones, Webster

DUO

Superior: Scheer/Robbins, Southwest Baptist;

Barrera/Cooper, Texas A&M-Kingsville

Excellent: Bartle/Kretzer, Southwest Baptist;

Debeer/Everard, Central College; Derouen/ Turner,

McNeese; Fosdick/Kacmarynski, Central College

Dramatic Interp

Superior: Barrera, Texas A & M-Kingsville

Baker, Prairie View A&M

Excellent: Williams, Prairie View A & M; Stoecklin,

Webster; Myer, Central College; Dorouen, McNeese

Communication Analysis

Superior: Moore, Southwest Baptist

Excellent: Williams, Southwest Baptist; Bailey, Southwest Baptist

Poetry

Superior: Derouen, McNeese; Moore, Southwest Baptist

Excellent: Payne, Central College; Scheer, Southwest

Baptist; Moore, Prairie View A&M; Kretzer,

Southwest Baptist

After Dinner Speaking

Superior: Scheer, Southwest Baptist

Excellent: Jones, UAR-Monticello; Hinkle, Southwest Baptist

Novice Parliamentary Debate

Superior: Kretzer/Bartle, Southwest Baptist

Excellent: Mason/Class, Southwest Baptist;

Whitehead/Robbins, Southwest Baptist;

Semifinals: Southwest Baptist KB over Northeast

Louisiana WR (3-0); Southwest Baptist WR and

Southwest Baptist MC closeout

Finals: Southwest Baptist (closeout)

Open Parliamentary Debate

Superior: Scheer/Woods, Southwest Baptist

Excellent: Stoecklin & Arokoyo, Webster/UMSL;

Turner/DeRouen, Southwest Baptist

Semifinals: Southwest Baptist SW over Webster RP (2-

1); McNeese State TD over Webster/UMSL SA (3-0)

Finals: McNeese State over Southwest Baptist (2-1)

Novice CEDA Debate

Superior: Colon/Wilson, Cameron

Excellent: King/Wilson, Cameron

Open CEDA Debate

Superior: Parsons/Wernecke, McNeese State

Excellent: Hudson/Milsted, Abilene Christian

Semifinals: Abilene Christian HM over Cameron PW

(2-1); McNeese State PW advancing over McNeese State JD

Finals: Abilene Christian over McNeese State (3-0)



Above: Seniors from the Provinces of the Lower Mississippi and the Missouri.

PROVINCE OF THE PLAINS

Sweepstakes

Superior: Hastings College

Excellent: Midland Lutheran, Chadron State

Informative

Superior: Muegge, Midland Lutheran

Excellent: Schmidt, Midland Lutheran; McDaniel, Chadron State

Programmed Oral Interp

Superior: Tiff, Midland Lutheran

Excellent: Howard, Hastings; McDaniel, Chadron

Prose Interp

Superior: Tiff, Midland Lutheran

Excellent: Parrott, Hastings; Flatowicz, Hastings

Persuasive

Superior: Schoeder, Hastings

Excellent: Young, Hastings; Koch, Midland Lutheran

Dramatic Interp

Superior: Flatowicz, Hastings

Excellent: Fisher, Hastings; Higgins, Hastings

After Dinner Speaking

Superior: Fisher, Hastings

Excellent: Pead, Midland Lutheran; Parrott, Hastings

Poetry Interp

Superior: Christopherson, UN-Lincoln

Excellent: Koch, UNL; Flatowicz, Hastings

Dramatic Duo

Superior: Erickson/Fischer, Hastings; Excellent:

Brewer/ Stednitz, Nebraska Wesleyan

Mussrave; McDaniel, Chadron

Impromptu

Superior: Horobik, Midland Lutheran

Excellent: Tiff, Midland Lutheran; Erickson, Hastings.

NORTHERN LIGHTS RESULTS

by Steve Collie, Governor

St. Cloud St. University (MN Omicron) and Director Dave Warne were outstanding hosts for this year's Northern Lights Provincial Tournament. Excellent competition was found in all 11 Individual Events and Parliamentary Debate. The Province is particularly happy to note the presence of Black Hills State University (SD Iota). Director Charles Follette and his 8 debaters made the long trek from Spearfish, South Dakota, to help make this a solid Provincial Tournament.

The leadership of the province is unchanged, with elections as follows: Governor: Steve Collie, Winona State; Lt. Governor: Mark A. Fokken, SW State University; Sec/Treasurer: Jaime Meyer, U of Mary; Student Lt. Governor: Ryan Laber, St. Olaf. The rest of the student committee includes: Kris Kracht, U of Mary; Heather Myers, Winona State U; Joe Edmister, Moorhead State U; Kevin Sackreiter, SDSU. The student adviser is Mark Fokken. Larry Schnoor was recognized for his recent induction into the Minnesota High School Speech and Debate Hall of Fame, the only college coach to be elected.

Sweepstakes

Superior: Winona State

Excellent: Concordia College, Moorhead State University

Parliamentary Debate

Superior: Erickson/Barua, Concordia

Excellent: Sackreiter/Heidelberger, SDSU;

Peltier/Mansmith, Gustavus

Communication Analysis

Superior: Laber, St. Olaf

Excellent: Ross, Winona

Poetry Interp

Superior: Hauser, Winona

Excellent: Drew, SDSU; Swenson, Concordia

Dramatic Interp

Superior: Hauser, Winona; Peterson, Concordia

Excellent: Myers, Winona; Hurley, Concordia;

Hinnenkamp, NDSU

After Dinner Speaking

Superior: Jensen, Concordia

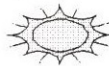
Excellent: Hatton, Moorhead State; Fischer, Winona

Prose Interp

Superior: Swenson, Concordia; Jensen, Concordia

Excellent: Hatton, Moorhead State; Fischer, Winona;

Hurley, Concordia; Hinnenkamp, NDSU



Informative Speaking

Superior: Odash, Concordia

Excellent: Herman, Gustavus; Ross, Winona

Impromptu Speaking

Superior: Laber, St. Olaf; Ripley, SCSU

Excellent: Hatton, Moorhead State University;

Edmister, Moorhead State; Jensen, Concordia

Programmed Oral Interp

Superior: Jensen, Concordia

Excellent: Heidelberger, SDSU; Ross, Winona

Extemp Speaking

Superior: Ripley, SCSU; Murphy, NDSU

Excellent: Sackreiter, SDSU; Hatton, Moorhead State;

Laber, St. Olaf

Persuasion

Superior: Herman, U of Mary

Excellent: Odash, Concordia; Laber, St. Olaf

Dramatic Duo

Superior: Fisher/Hauser, Winona; Jensen/Hurley,

Concordia

Excellent: Kosiak/Kracht, U of Mary; Myers/Fischer,

Winona

SOUTHEAST PROVINCE RESULTS

by Tom Huebner

Overall Sweepstakes

Superior: William Carey College

Excellent: Georgetown; West Florida

Debate Sweepstakes

Superior: William Carey College

Excellent: UNC-Charlotte; West Florida

Individual Events Sweepstakes

Superior: William Carey College

Excellent: West Florida; Georgetown

Extemp Speaking

Superior: Wellman, West Florida; Caloria, WCC

Excellent: White, Georgetown; Smith, WCC; Kuss,

West Florida

Prose Interp

Superior: Wellman, West Florida; Shackjeford,

Northern Kentucky; Whitehead, WCC

Excellent: Mrame, UNC-Charlotte; Waters, West

Florida; Hewitt, WCC; Buckley, WCC; Houser, WCC

Informative Speaking

Superior: Celoria, WCC

Excellent: Galipeau, West Florida; Panter, WCC

Duo Interp

Superior: Smith/Houser, WCC; Celoria/Sanders, WCC

Excellent: Wellman/Galipeau, West Florida;

Whitehead/Lindsey, WCC; McBreyer/Kennedy,

College of Charleston; Kuss/Wellman, West Florida

Impromptu Speaking

Superior: Lou, WCC; Kuss, West Florida; Celoria,

WCC

Excellent: Kennedy, College of Charleston; Krokowski,

Georgetown; Wellman, West Florida; Lucas, WCC;

Wetterson, Georgetown

Programmed Oral Interp

Superior: Yates, Georgetown; Sanders, WCC

Excellent: Nelson, Northern Kentucky; Houser, WCC;

Lindsey, WCC

Persuasive Speaking

Superior: Lott, WCC; Kuss, West Florida

Excellent: Celoria, WCC; Smith, WCC; Grimes, WCC

Communication Analysis

Superior: Celoria, WCC

Excellent: Ruiz, WCC; Kuss, West Florida

Dramatic Interpretation

Superior: Houser, WCC

Excellent: White, Georgetown; Whitehead, WCC

Poetry Interp

Superior: Houser, WCC; Stahl, Georgetown

Excellent: Wellman, West Florida; Turner, UNC-

Charlotte; Buckley, WCC

After Dinner Speaking

Superior: Smith, WCC

Excellent: Lott, WCC; Kuss, West Florida

Discussion

Superior: Watterson, Georgetown

Excellent: Huntington, Georgetown; Yates,

Georgetown

Debate Speaker Awards

1. Lott, WCC; 2. Kuss, West Florida; 3. Lucas, WCC;

4. Celoria, WCC; 5. Stahl, Georgetown; 6. Mathieus,

UNC-Charlotte

Novice Parli

Superior: Hewitt/Clark, WCC

Excellent: Krokowski/White, Georgetown;

Martin/Stahl, Georgetown

Open Parli

Superior: Hewitt/Clerk, WCC; Lott/Lucas, WCC

Excellent: Kuss/Wellman, West Florida;

Celoria/Grimes, WCC

Semis: WCC over WCC; West Florida over WCC

Finals: WCC Hewitt/Clark over West Florida

Kuss/Wellman



**PROVINCE OF THE COLONIES
RESULTS**
by Susan Miskelly, Bridgewater State

Extemporaneous Speaking

Superior: Gephart, Bloomsburg
Excellent: Jackson, Longwood; Boniello, Hofstra;
Entin, York

Persuasive Speaking:

Superior: Jackson, Longwood
Excellent: Vitacco, Bloomsburg; Gephart, Bloomsburg

Prose Interp

Superior: Jackson, Longwood; Bazil, West Chester;
McClanahan, Bloomsburg
Excellent: Little, Longwood; Murray, Excellent; Tiller,
Longwood; Sterling, West Chester; Vitacco,
Bloomsburg; Bordner, Bloomsburg

Dramatic Duo

Superior: Patrick/Asphall, Morgan State; Sterling/
Bazil, West Chester; Excellent: Hill/Lockamy,
Longwood; McLaughlin/Lockamy, Longwood;
Boniello/ Calhoun, Hofstra

Programmed Oral Interp

Superior: McClanahan, Bloomsburg
Excellent: Patrick, Morgan State; Griffin, Bloomsburg

Communication Analysis

Superior: Bazil, West Chester
Excellent: Jackson, Longwood

After Dinner Speaking

Superior: McLaughlin, Longwood
Excellent: McClanahan, Bloomsburg

Impromptu Speaking

Superior: Henley, York; Vitacco, Bloomsburg
Excellent: Jackson, Longwood; Tiller, Longwood;
Boniello, Hofstra; Entin, York; Jay, Bridgewater

Dramatic Interp

Superior: Bazil, West Chester
Excellent: Vitacco, Bloomsburg; McClanahan,
Bloomsburg; Bordner, Bloomsburg

Poetry Interp

Superior: Jackson, Longwood; Bazil, West Chester
Excellent: Patrick, Morgan State; Sterling, West
Chester; Jaye, Bridgewater; McClanahan, Bloomsburg;
Stratton, Bloomsburg

Informative Speaking

Superior: Asphall, Morgan State; Bazil, West Chester
Excellent: Boniello, Hofstra; March, York; Rickli,
York; Sterling, West Chester

Lincoln Douglas

Superior: Watts, U of Rhode Island
Excellent: Centzone, U of Rhode Island



**The Department of Communication Arts
of Southwest Baptist University**

with quality undergraduate programs in

Communication

Public Relations

Speech-Theatre

Speech-Theatre Education

salutes the record of excellence and service of the

SBU FORENSICS TEAM

AND ITS MISSOURI SIGMA CHAPTER OF PI KAPPA DELTA.

For information regarding SBU undergraduate majors in 46 fields or
graduate programs in teacher education, physical therapy or business,

contact: *Office of Admissions*
Southwest Baptist University
1600 University Avenue
Bolivar, Missouri 65613
1-800-526-5859

C OMMUNICATION

Graduate study at North Dakota State University

Graduate Faculty

Jeff Brand, Ph.D.
Indiana University, 1995

Ann Burnett, Ph.D.
University of Utah, 1986

Ross Collins, Ph.D.
University of Cambridge, 1992

Douglas Blanks Hindman, Ph.D.
University of Minnesota, 1994

Elizabeth Blanks Hindman,
Ph.D.
University of Minnesota, 1994

Robert S. Littlefield, Ph.D.
University of Minnesota, 1983

Mark Meister, Ph.D.
University of Nebraska, 1997

Charles Okigbo, Ph.D.
Southern Illinois University,
1982

Susanne Williams, Ph.D.
Wayne State University, 1996

Deanna Sellnow, Ph.D.
University of North Dakota, 1991

Timothy L. Sellnow, Ph.D.
Wayne State University, 1987

THE GRADUATE FACULTY of North Dakota State University's Department of Communication offer one of the largest master's degree programs on campus. More than four dozen majors come to Fargo to study here, more than one fourth of them relying on teaching assistantships covering tuition and including a stipend.

The program of study in speech communication or mass communication offers students a flexible choice designed to match professional and personal goals. All teaching faculty hold Ph.D.s from major universities here and abroad, and all maintain active research agendas.

For more information on NDSU's M.A. and M.S. programs in communication, write or call:

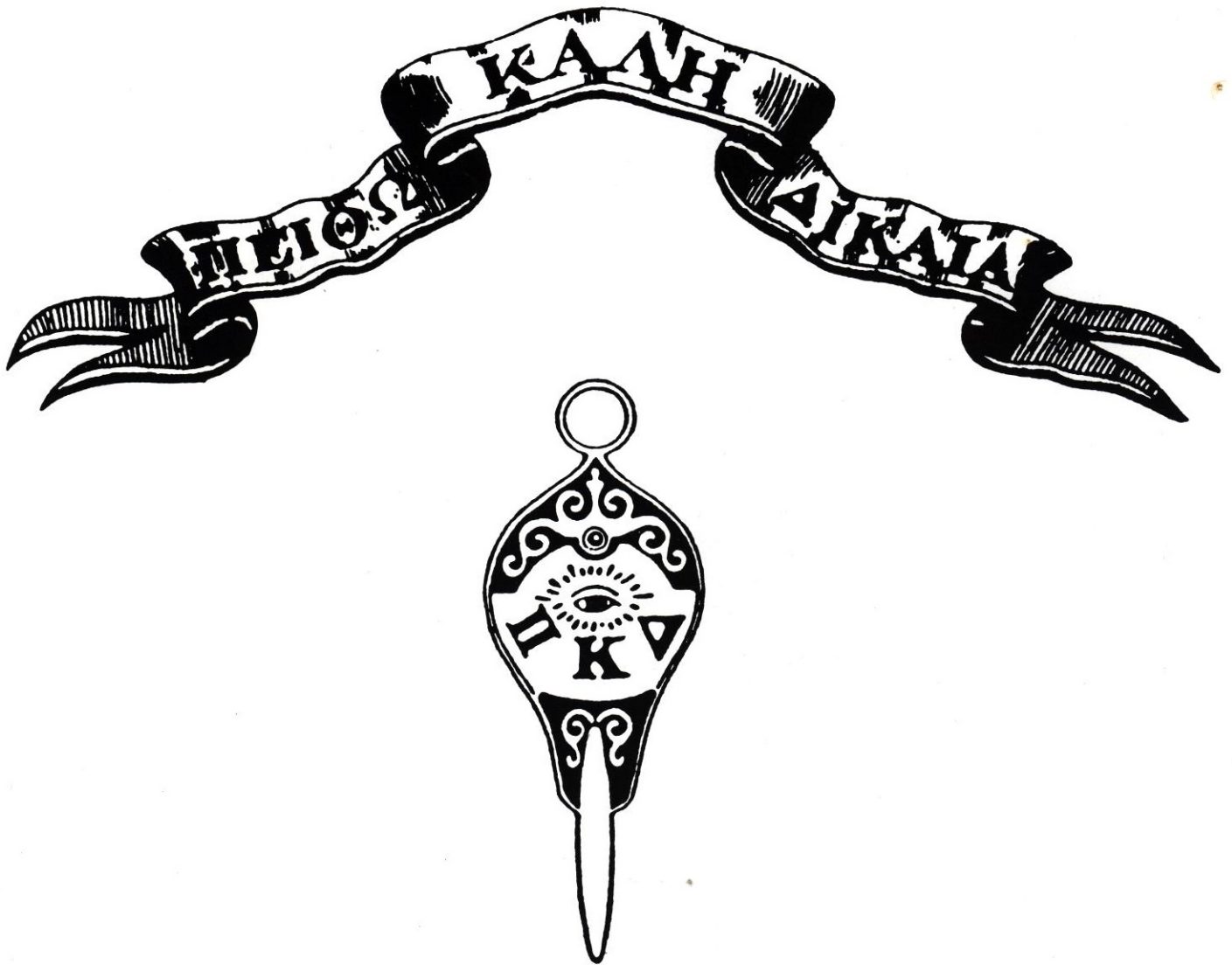
Ross Collins, Ph.D.,
Director of Graduate Studies
Department of Communication
North Dakota State University
Box 5075
Fargo, ND 58105-5075
(701) 231-7295
E-mail: rcollins@badlands.nodak.edu

Master's Degree in Speech or Mass Communication

Core requirements:

- Research methods in communication
- Mass communication theory
- Intercultural communication

Other requirements vary by degree chosen, but include six credits of research tools, an elective specialization, and final paper or thesis.



PI KAPPA DELTA NATIONAL HONORARY FRATERNITY
"The Art of Persuasion Beautiful and Just"